

SonicCell Expandable Synthesizer Module and Audio Interface



Using SonicCell with Logic Pro™

© 2008 Roland Corporation U.S.
All rights reserved. No part of this publication may be reproduced in any form without the written permission of Roland Corporation U.S.
Apple™ and Logic Pro™ are trademarks of Apple Inc.
Apple Inc. is not associated or affiliated with Roland in any manner.

SCWS05

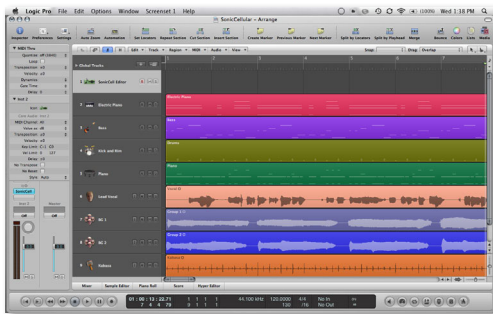
About the Workshop Booklets

Roland's SonicCell is designed for modern musicians. Using USB, It adds a huge set of sounds to your digital audio workstation (or "DAW") without adding to your computer's workload. It's also an audio interface that can get signals from mics, instruments, or other devices to DAW tracks for recording. SonicCell's Editor software allows you to program SonicCell from within your DAW. Onstage, its compact size also makes SonicCell the ideal companion for a laptop DAW, letting you perform and sing along with recorded tracks. Or use it to play back sequences and audio files from a USB memory stick.

Each SonicCell Workshop booklet focuses on one SonicCell topic, and is intended as a companion to the *SonicCell Owner's Manual*. This booklet requires SonicCell O.S. Version 1.11 or higher. You can download the latest SonicCell O.S. for free from www.RolandUS.com.

About This Booklet

This booklet contains instructions for using SonicCell with Apple's Logic Pro 8. (Much of what we cover also applies to Logic Pro 7.) First we'll discuss recording MIDI tracks in Logic Pro using SonicCell's synth sounds. Next, we'll talk about SonicCell as an audio interface, telling you how to record both live audio and SonicCell's synth sounds as audio tracks in Logic Pro.



We'll assume you've installed and know how to operate Logic Pro—otherwise, consult Logic Pro's built-in documentation in its Help menu. We'll also assume you've read the *Using SonicCell with a DAW* and *Using SonicCell as an Audio Interface* Workshop booklets, that SonicCell and your computer are hooked up and turned on, and that you're listening through SonicCell.

Understanding the Symbols in This Booklet

Throughout this booklet, you'll come across information that deserves special attention—that's the reason it's labeled with one of the following symbols.



A note is something that adds information about the topic at hand.



A tip offers suggestions for using the feature being discussed.



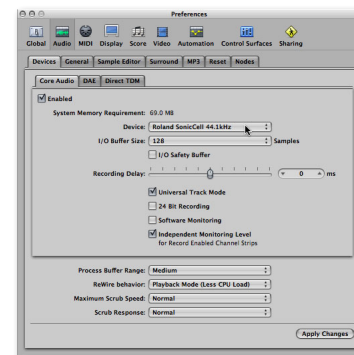
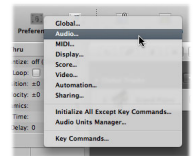
Warnings contain important information that can help you avoid possible damage to your equipment, your data, or yourself.

Configuring Logic Pro to Work With SonicCell

Setting Up Logic Pro for SonicCell Audio

To configure Logic Pro so it's using SonicCell for its inputs and outputs:

- 1 Click and hold down the Preferences button in the Arrange window tool bar, and select **Audio...** to open the Core Audio tab of the Preferences window. (If you prefer, you can do the same thing from the Logic Pro menu.)



If this isn't the pane you see, click the Core Audio tab.

- 2 If the Device popup menu doesn't already show "Roland SonicCell [SonicCell's current sample rate], select [Roland SonicCell \[SonicCell's current sample rate\]](#) from the menu.
- 3 Click Apply Changes—Logic Pro configures itself to use SonicCell as its audio interface.

Turn Off Software Monitoring

- 4 Make sure [Software Monitoring](#) is unchecked.
- 5 Close the Preferences window.



As we said in the *Using SonicCell with a DAW* and the *Using SonicCell as an Audio Interface* Workshop booklets, you can listen through Logic Pro if you want to hear its effects as you record. Since you may encounter latency, though, we recommend listening directly through SonicCell.

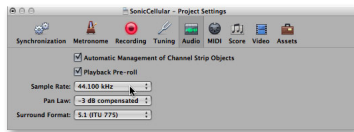
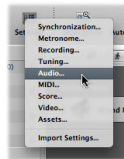


If you *do* decide to listen through Logic Pro, once you've check-marked [Software Monitoring](#), you can hear your live input even before arming a track for recording by lighting the track's Input (I) button.

Setting the Sample Rate

Your Logic Pro project must be operating at the same sampling rate as SonicCell to capture its audio. To change a project sample's rate:

- 1 Click and hold down the Settings button in the Arrange window tool bar, and select [Audio...](#) to open the Project Settings window. (If you prefer, you can do the same thing from the File menu's Project Settings sub-menu.)



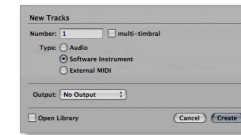
- 2 Set the Sample Rate popup menu's value to match SonicCell's sample rate.



To learn how to check and/or change SonicCell's sample rate, see the *Using SonicCell with a DAW Workshop* booklet.

Creating a SonicCell Editor Track

- 1 Open the project you want to work on, or create a new one.
- 2 Click the + button above the track list to open the New Tracks sheet.
- 3 Set the window's parameters to create one new software instrument, set Output to [No Output](#), and uncheck [Open Library](#). When you're done, the New Tracks sheet should look like this:



- 4 Click Create—the new software instrument track appears in the Arrange window, selected by Logic Pro.
- 5 In the Inspector pane to the left, click and hold on the first I/O slot and select the stereo SonicCell Editor AU plug-in from the AU Instruments > Roland submenu.



The SonicCell Editor opens and retrieves SonicCell's current settings.



Changes you make to SonicCell using the Editor affect SonicCell's current performance, or—if you're in Patch mode—its current patch.

- To close the Editor window at any time, click its Close button in the upper left-hand corner. To re-open it, double-click the I/O slot—which now says “SonicCell”—in the Inspector pane.

Naming a Track

To make it easier to get to the Editor, we recommend naming the track something like “SonicCell Editor.” To display and change a track name:

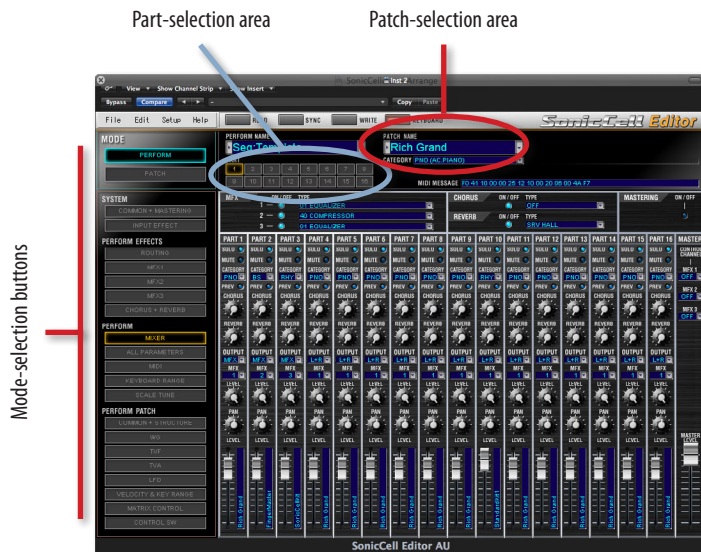
- Control-click on the track’s currently displayed name and select **Configure Track Header...**
- Set the Names popup to **Track Name**, and click Done.



This sheet provides lots of interesting track-header options, which are explained in the Logic Pro documentation.

- Command-double-click a track’s current name, type in the desired name, and press return on your keyboard.

Using the SonicCell Editor



You’ll find detailed instructions for using the SonicCell Editor in its manual, which you can display by clicking the Help button in the SonicCell Editor window. What follows here are some quick instructions to get you started.



Everything you set up in the SonicCell Editor is automatically saved in your Logic Pro project. When you reload the project, the Editor automatically sets up the current performance in SonicCell to match.

Selecting a Patch for a Part

You choose each patch you want to use in Logic Pro by selecting it for the part that a Logic Pro MIDI track is configured to play. Here’s how:

- Click the part’s number in the PARTS area of the Editor window.
- Select a patch for the part using the controls in the patch-selection area, circled in red to the left on this page. To select a patch by:
 - memory location*—click the PATCH NAME parameter’s popup arrow to reveal SonicCell’s patches organized by their memory locations.
 - category*—click the CATEGORY parameter’s popup arrow to reveal SonicCell’s patches divided into categories.



You can select performances stored in SonicCell using the PERFORM NAME popup located above the part-selection area.

Digging Deeper

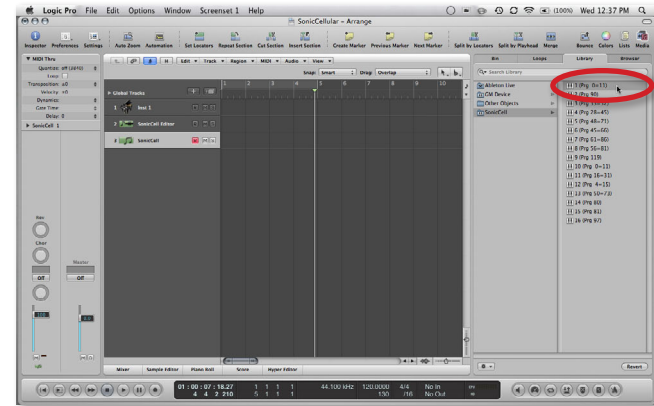
The SonicCell Editor lets you change the current performance’s sounds in a range of ways. The mode-selection buttons to the left of the Editor window determine the parameters you see and can edit at any given time. They’re divided into the following sections:

- SYSTEM**—The buttons in this area allow you to set SonicCell’s global behavior, and also get quick access to its input effect, a handy thing when you’re recording live audio through SonicCell.
- PERFORM EFFECTS**—These buttons edit the performance’s effect setup.

- **PERFORM**—These parameters allow you to control the way each part plays its patch, and lets you add effects to the patch.
- **PERFORM PATCH**—These parameters allow you to dig right inside a part's patch in order to edit it down to its most basic characteristics.



Before using the PERFORM PATCH buttons, be sure to select the part that plays the patch you want to edit. You do this by clicking the part's number in the part-selection area at the top of the window.



Here we've set our tracks to show their track names, so we see MIDI Program Change numbers displayed next to the MIDI channels in the Library. What you see here depends on how you've configured your track headers.



This is a case where Logic Pro 8 differs from Logic Pro 7. In Logic Pro 7, go to the Environment and create a new multi-instrument. To assign a track to a SonicCell part, select it from the track-header popup.



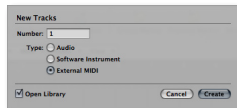
If you haven't yet selected a patch on SonicCell to play from this track, use the SonicCell Editor's track to assign the desired patch to the part you want to use. Once you've done that, return to the MIDI track you've been setting up.

Sequencing with SonicCell Patches

In this section, we'll assume

- you're using SonicCell in Performance mode—using SonicCell's PRST 01 Seq: Template performance to start with.
- you've connected a MIDI controller to SonicCell's MIDI IN jack—and turned on SonicCell's USB-MIDI THRU System parameter.

- 1 Open the project you want to work on, or create a new one.
- 2 Click the + button above the track list to open the New Tracks sheet.
- 3 Set the window's parameters to create a new External MIDI instrument, and check **Open Library**—the New Tracks sheet should look like this:



- 4 When you're done, click Create.
The new track is created and selected, and the Library pane opens on the right side of the Arrange window.
- 5 In the Library pane, click SonicCell in the left-hand column—SonicCell's MIDI channels appear in the right-hand column.
- 6 Click the MIDI channel for the SonicCell part whose patch you want to sequence.

In the following screenshot, we've selected MIDI Channel 1 because we want to sequence with a patch being played by Part 1 in the current SonicCell performance.

- 7 When you play your controller now, you should hear the desired patch play in SonicCell.
- 8 Record your SonicCell track as you would any other Logic Pro track—when you play it back, you'll hear its SonicCell patch play.
- 9 Repeat Steps 2-8 for other SonicCell tracks you want to sequence.



At this point, your track is sequenced, and you'll hear it each time you play your project, including when you edit the track. However, the sound is still coming from SonicCell itself—it hasn't yet been recorded as an audio track in Logic Pro. We'll get to that in the next section.

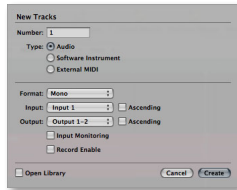
Recording Audio from SonicCell in Logic Pro



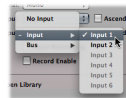
If you haven't yet read the *Using SonicCell as an Audio Interface* Workshop booklet, read it now before proceeding. SonicCell offers lots of audio-interface options you'll want to know about.

Selecting Audio to Record

- 1 Open the project you want to work on, or create a new one.
- 2 Click the + button above the track list to open the New Tracks window.



- 3 Set the window's parameters to create a new audio track, and choose the desired mono or stereo format for your track.
- 4 Select the desired SonicCell input from the Input menu. To record
 - a mic or instrument connected to SonicCell's Neutrik input jack—select **Left Roland SonicCell IN L**.
 - a stereo device connected to SonicCell's Neutrik and (LINE) R input jacks—select **Stereo Roland SonicCell IN L**.
 - a SonicCell synth patch in stereo—select **Stereo Roland SonicCell IN L**.
- 5 Click Create.



If you already have a track you want to use, set its format and select the desired SonicCell input in the Arrange window's Inspector.

Before Recording: SonicCell Audio-Recording Strategy

Since SonicCell can simultaneously be the source of synth sounds and your live audio, a little thought needs to be given to making sure you're only recording exactly what you intend to record on any given track.

When you want, for example, to record a single SonicCell synth sound on its own track, you don't want another synth sound or live audio to find its way onto the track. Likewise, if you're recording a vocal or other live audio, you don't want your synths recorded on that same track. Here's what to do.

- *When you want to record a single synth track as a Logic Pro audio track*
 - mute any other SonicCell synth tracks you have in the song by clicking their Mute (M) buttons to light them, or mute their parts in the SonicCell Editor.
 - If you've connected a mic, instrument, or other device to one of SonicCell's inputs, disconnect it until you're ready to record its audio onto a Logic Pro track.
- *When you want to record live audio as a Logic Pro audio track, you can use either of two methods:*
 - *If you need to hear your SonicCell synth tracks as you record*—send your live audio through SonicCell's input effect, and then set the TO COM parameter on the In/Out Routing screen to **Input FX**.
 - *If you don't need to hear SonicCell synth tracks as you record*—mute them in Logic Pro by clicking their Mute buttons to light them, or mute their parts in the SonicCell Editor.

Once you've got your audio coming from SonicCell the way you want, record your audio track as you would any other Logic Pro track.

Troubleshooting

If you experience problems recording or playing back audio, Logic Pro's built-in owner's manual provides insights that can help you solve your problem. Check out the "Configuring Your Audio Hardware" section of the "Setting Up Your System" chapter. In addition to following these steps, raising the Audio Buffer size in SonicCell's control panel may also help, though it may also increase latency if you're working with soft synths in Logic Pro.

The End

We hope you've found this workshop helpful. Keep an eye out for other SonicCell Workshop booklets available for downloading at www.RolandUS.com.

Free Manuals Download Website

<http://myh66.com>

<http://usermanuals.us>

<http://www.somanuals.com>

<http://www.4manuals.cc>

<http://www.manual-lib.com>

<http://www.404manual.com>

<http://www.luxmanual.com>

<http://aubethermostatmanual.com>

Golf course search by state

<http://golfingnear.com>

Email search by domain

<http://emailbydomain.com>

Auto manuals search

<http://auto.somanuals.com>

TV manuals search

<http://tv.somanuals.com>