

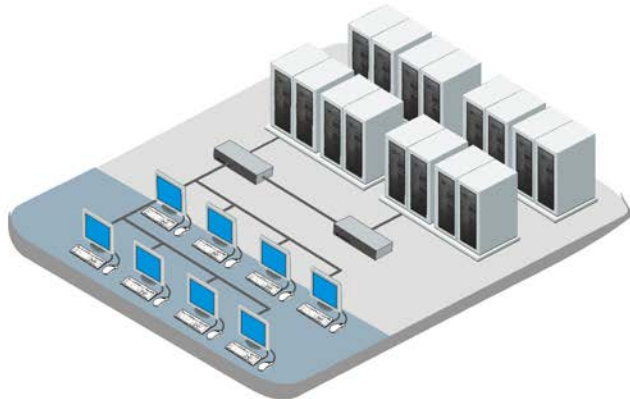
ROSE.COM

UltraMatrix™

Keyboard-video-mouse matrix switch with on-screen display

Quick Start Guide

X-Series



10707 Stancliff Road
Houston, Texas 77099

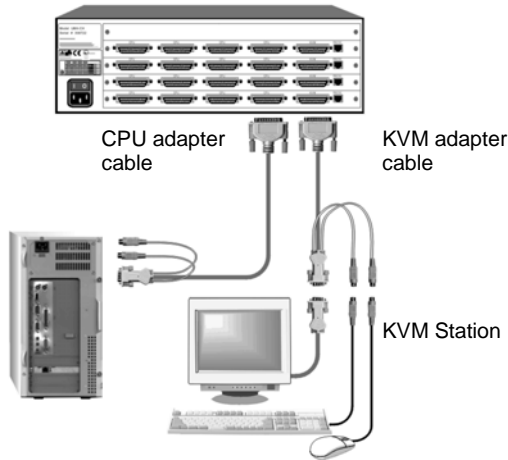
Phone (713) 933-7673
www.rose.com

UltraMatrix Single unit Installation

The following installation procedure features the 4XE model. Installation for other models (2, 4, or 8 computers) follow the same basic procedure.

It is recommended that power to all monitors, computers, and UltraMatrix be off until all connections have been made.

The below illustration shows the basic cable connections for UltraMatrix and the installation steps to properly connect the cables, computers, and KVM stations to UltraMatrix.



1. Connect a KVM station to the KVM 1 DB25F connector using the appropriate KVM adapter cable. Depending on the model, connect other KVM stations to the KVM x DB25F connector.
2. Connect the computers to UltraMatrix using the appropriate CPU adapter cable. Connect the keyboard, monitor, and mouse computer ports to the corresponding connectors on the CPU adapter cable. Connect the DB25M connector to the CPU DB25F connector on UltraMatrix.
3. Connect other computers (4, 8, 12, or 16 depending on model)
4. With all cabling in place, power on all monitors, the UltraMatrix switch, and boot the computers last.

Please refer to the Installation and Operations manual for the installation procedure for an expanded system.

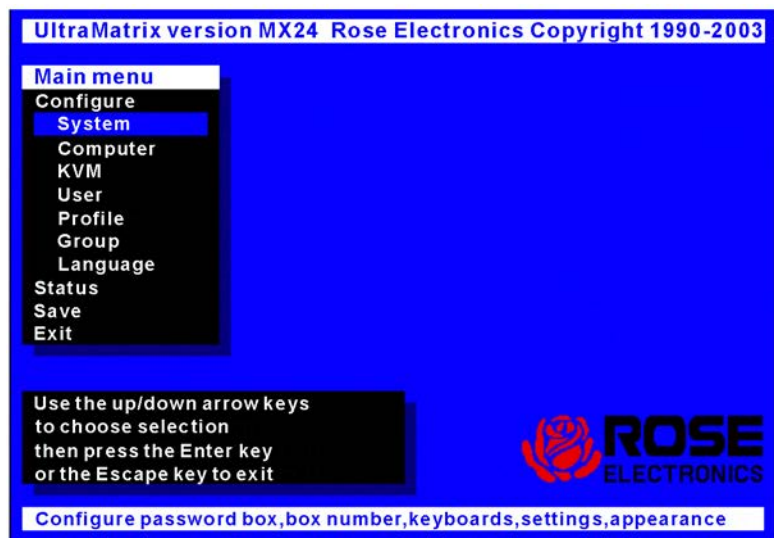
Operating Instructions

With all cabling in place and power applied to all equipment, the video monitor connected to KVM port #1 should display the video from computer #1 (default). Switching to other computers is accomplished by:

1. Keyboard commands (press and release left Ctrl key + CPU #)
(LCtrl + 3 switches to port #3)
2. On-Screen-Display list of computers (Left Ctrl + Esc key)
3. Remotely using the RS232 port and sending switching commands from a remotely connected computer using a communication program like HyperTerminal. (Sending K2C8S, enter, switches KVM #2 to CPU port #8)

Additional keyboard commands are available for other switching methods, invoking the scan mode, and others. See Table 1 for a list of keyboard commands and their functions.

The OSD provides a visual interface to the features, set-up and additional functions. The OSD is invoked by pressing and releasing the left Ctrl key, then the F12 key. The below menu will display for configuring the System, Computers, KVM, User, Profile, Group, and Language. Refer to the Installation and Operations manual for a detailed description of each menu's features and options.



To navigate through the menu system, use the arrow keys to select the configuration menu needed and press [Enter]. When you press [Enter] that menu will display, an input box will display for a new value, or a list of supported choices will display. Enter or select the information needed and press [Enter]. To return to the previous page or abort an input, press the [Esc] key.

Keyboard commands

The following table describes the available keyboard commands. The [Ctrl] key sequence is a press and release of the left control key. Commands following [Ctrl] must be entered within 2 seconds.

Command	Key sequence	Description
Main Menu	[Ctrl] [F12]	Displays main menu
CPU List	[Ctrl] [Esc]	Displays CPU selection list
Direct CPU connect	[Ctrl] n [Enter]	Connects directly to the specific CPU number "n".
Connect Back	[Ctrl] [Backspace]	Connects to the previous CPU
Connect Down	[Ctrl] [Minus sign]	Connects to the previous CPU in a Group.
Connect Up	[Ctrl] [Plus sign]	Connects to the next sequential CPU in a group
KVM Status	[Ctrl] D	Displays / Removes status box.
Logout	[Ctrl] L	Logs user out if the KVM station is configured for user logins.
Disconnect	[Ctrl] Q	Disconnects the current CPU
Reset Keyboard/ mouse	[Ctrl] R	Resets / enables keyboard and mouse; enables PS/2 mouse on connected CPU
Send Null Byte	[Ctrl] N	Sends a null byte to the CPU's PS/2 mouse port. Use this command if the PS/2 mouse gets "out of sync".
Reset Mouse (NT or Unix systems only)	[Ctrl] O (not zero)	Resets the currently selected NT or Unix computers PS/2 mouse. Also switches the NT mouse driver to "wheel" mode.
Start Scan	[Ctrl] S	Sequentially steps through all connected CPUs in a group.
Stop Scan	[Ctrl] X	Turns scan "Off"

Table 1 - Keyboard Commands

Copyright Rose Electronics 2007. All rights reserved.

No part of this publication may be reproduced, stored in a retrieval system, or transcribed in any form or any means, electronic or mechanical, including photocopying and recording, without the prior written permission of Rose Electronics.

Free Manuals Download Website

<http://myh66.com>

<http://usermanuals.us>

<http://www.somanuals.com>

<http://www.4manuals.cc>

<http://www.manual-lib.com>

<http://www.404manual.com>

<http://www.luxmanual.com>

<http://aubethermostatmanual.com>

Golf course search by state

<http://golfingnear.com>

Email search by domain

<http://emailbydomain.com>

Auto manuals search

<http://auto.somanuals.com>

TV manuals search

<http://tv.somanuals.com>