

*Rosewill*<sup>®</sup>

**Keyboard**

RK-7300

**USER'S Manual**



## ***System Requirements***

- IBM or compatible PC
- Windows operating system
- Pentium or equivalent processor and above
- One available USB port

## ***OS Support***

- Windows ME
- Windows 2000/NT
- Windows XP
- Windows Vista

## ***Description of hot key***

Home page : Start the Internet browser.

E-mail : Start the e-mail application.

Search : Enable to search for a file, a property,  
or text contained within a file.

Volume down : Decrease the Volume level.

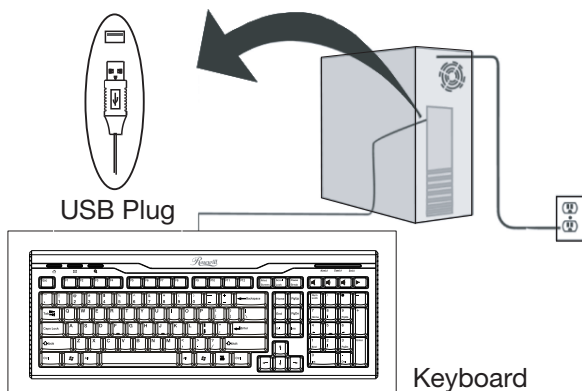
Volume up : Increase the volume level.

Mute : Press once to switch the sound ON/OFF.

Play/Pause : Press once to start playing the CD, and  
press once again to stop playing the CD  
temporary, and press once again to  
resume playing.

## Installation

This is a PnP (Plug-n-Play) device and compatible with Windows ME, Windows 2000, Windows XP and Windows Vista.



## ***Warning***

Some experts believe that prolonged-usage of keyboard or mouse may cause serious injury to hands, wrists, arms, neck or back. If you feel pain, fatigue, numbness and/or weakness in these areas, please see a qualified health professional for assistance.

To reduce the risks of such injuries, we recommend that you:

- Take frequent short-break from operating a computer or related tasks.
- Avoid operating a computer for extended period of time, defined by each sitting of an hour or more.
- Please consult with your family physician for the guideline on proper typing postures.

Do not use this product in ashy, wet or oily environments. Failure to do so may shorten the life of this product and may cause injury to its user(s).

## **Caution**

- \*\*Please keep this product as far away from radio frequency interruption area as possible.*
- \*\*This is not an outdoors product.*
- \*\*Exposing this product to the elements may cause damages to the product and may cause bodily harm to its users.*
- \*\*Please do not use alcohol, petroleum, benzene or thinner-based solution to clean this product.*
- \*\*We recommend wiping this product with a damp cloth.*

## **Warranty Information**

This product is warranted to be free from defects in material and workmanship for a warranty period of 1-YEAR.

The warranty does not cover:

1. Any product with defaced, modified or removed serial number.

2. Damage, deterioration or malfunction resulting from :
- \*\*Accident, misuse, negligence and natural hazards including : fire, water, lightning and/or other acts of nature.
  - \*\*Any unauthorized modifications not complying with the standard product or failure to follow instructions supplied with the product.
  - \*\*Repair or attempted repair by unauthorized personnel.
  - \*\*Shipping damage; consult with your retailer if the product is suspected of being damaged during shipping.
  - \*\*Removal or installation of the product.
  - \*\*External to the product, such as absence of electrical grounding, power fluctuation, failure and/or power spikes.
  - \*\*Any other cause not related to a product defect.

## ***FCC Statement on CLASS B***

This equipment has been tested and found to comply with the limits for a Class B digital device, pursuant to Part 15 of the FCC Rules. These limits are designed to provide reasonable protection against harmful interference in a residential installation.

This equipment generates, uses, and can radiate radio frequency energy and, if not installed or used in accordance with the instructions, may cause harmful interference to radio communications. However, there is no guarantee that -interference will not occur in a particular installation.

If this equipment does cause harmful interference to radio or television -reception, which can be determined by turning the equipment off and on, the user is -encouraged to try to correct the interference by one or more of the -following -measures :

- 1) Reorient or relocate the receiving antenna;
- 2) Increase the -separation between the equipment and the receiver;
- 3) Connect the equipment to an outlet on a circuit different from that to which the receiver is connected;
- 4) Consult the dealer or an experienced radio/TV technician for additional suggestions.

Any changes or modifications not expressly approved by the party responsible for compliance could void the user's authority to operate the equipment. Where shielded interface cables have been provided with the product or specified additional components or accessories elsewhere define to be used with the installation of the product, they must be used in order to ensure compliance with FCC regulation.

*Rosewill*<sup>®</sup>

Thank you for purchasing a quality Rosewill Product.  
Please register your product at : [www.rosewill.com](http://www.rosewill.com) for complete warranty  
information and future support for your product.



## Free Manuals Download Website

<http://myh66.com>

<http://usermanuals.us>

<http://www.somanuals.com>

<http://www.4manuals.cc>

<http://www.manual-lib.com>

<http://www.404manual.com>

<http://www.luxmanual.com>

<http://aubethermostatmanual.com>

Golf course search by state

<http://golfingnear.com>

Email search by domain

<http://emailbydomain.com>

Auto manuals search

<http://auto.somanuals.com>

TV manuals search

<http://tv.somanuals.com>