



Wireless N Dual Band Adapter N600PCE

Quick Installation Guide



Overview

Thank you for purchasing Rosewill's N600PCE wireless dual band PCI-Express card! This network card can operate in 2.4GHz or 5GHz wireless network. Excepting common wireless standards 802.11a/b/g, this wireless network card is also able to access 802.11n wireless networks - data transfer rate is 300Mbps, and that's six times faster than 802.11g wireless network!

1.1 Package Content

Before getting started, please verify that your package includes the following items:

1. Rosewill N600PCE Wireless Dual Band PCI-E Adapter x 1
2. Quick Installation Guide x 1
3. 3dBi dual-band antenna x 2
4. Low Profile Bracket x 1
5. Resource CD x 1, including:
 - Wireless Utility and Driver
 - User Manual
 - Quick installation guide x 1

Note:

Make sure that the package contains the above items. If any of the listed items are damaged or missing, please contact with your distributor.

1.5 System Requirement

You must have at least the following

- A desktop PC with an available PCI-Express slot
- At least a 300MHz processor and 32MB of memory
- Windows OS for WinXP, Vista, and 7
- A CD-ROM Drive
- A 802.11n · 802.11g or 802.11a/b Wireless (and Dual Band) Access Point/Router (for infrastructure Mode) or another 802.11n · 802.11g or 802.11b wireless (and Dual Band) adapter (for Ad-Hoc; Peer-to-Peer networking mode).

1.6 LED Status

This PCIE Adapter contains one LED. Please refer to the following description for LED definition.

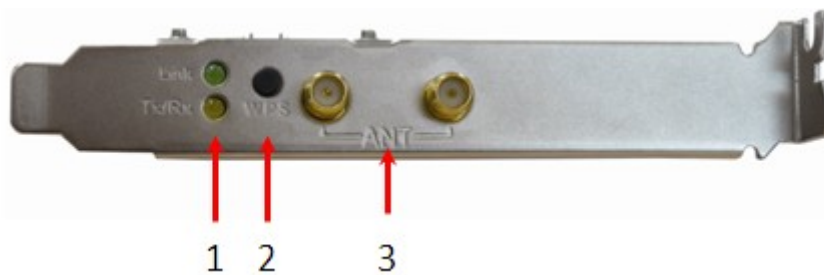
LED Name	Light Status	Description
Link	On	Link to a wireless access point

	Off	Not linked to any wireless access point
Tx/Rx	On	Wireless WPS function is activated. The network card will wait for 2 minutes to establish WPS connection.
	Blinking	Wireless network card is normally installed /Linked to a wireless access point / Transferring or receiving data.
	Off	No wireless activity

Installation Guide

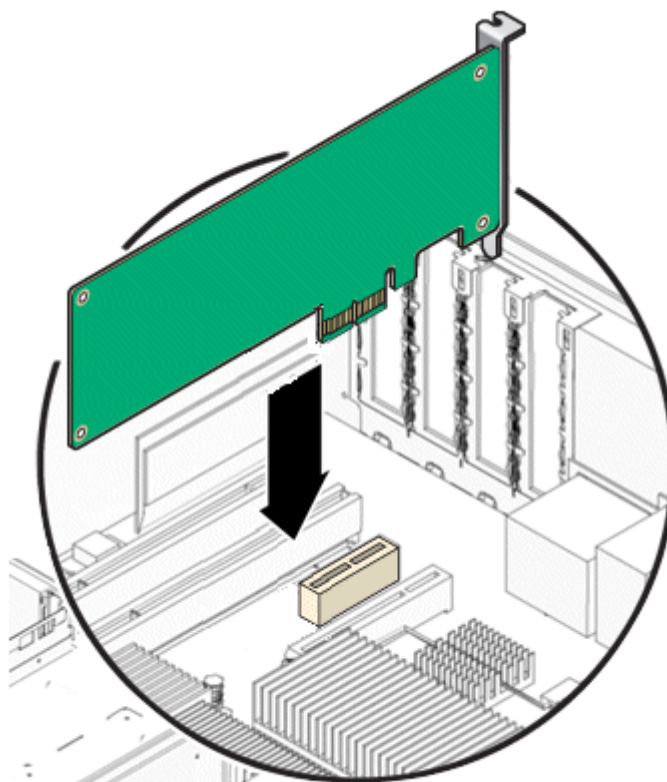
2.1 Hardware Diagram

1. Link and Tx/Rx LED
2. WPS Button
3. Antenna



2.2 PCI-Express Card Installation

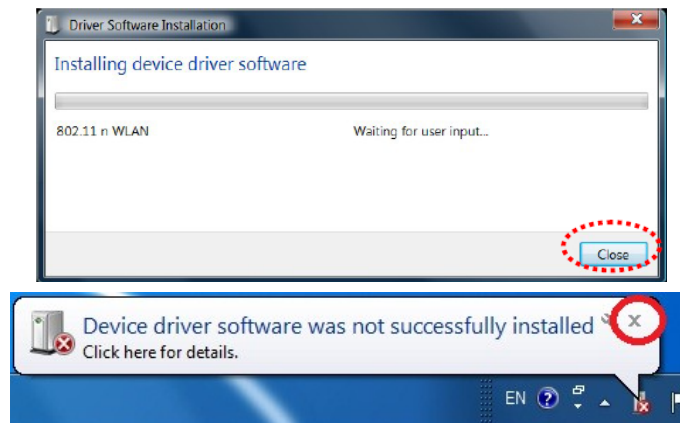
1. Turn off your computer and unplug the power cord from the computer.
2. Open the case and locate an available PCI-E slot. Remove the metal slot cover on the back of the PC. Keep the screws. Turn to your computer manufacturer for instructions if needed.
3. Insert the PCI-E adapter into the PCI-E slot. Make sure that all of its pins have touched the slot's contacts. Once the adapter has been firmly inserted, screw its fastening tab. Then, close your PC case.



4. Insert the power cable back into the computer and turn on your computer.
5. If the following window popup after you turn on the computer, please click **Cancel** or **Close**:
 - Under Win XP



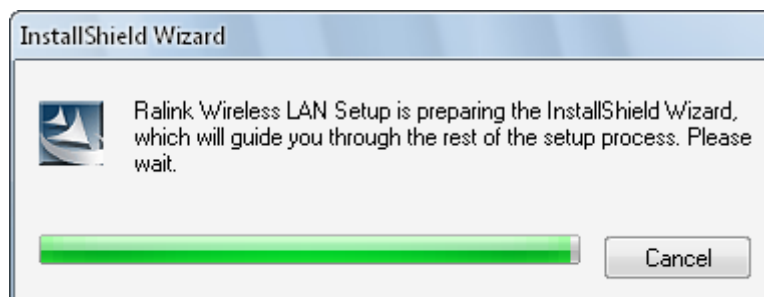
- Under Windows Vista/Win7



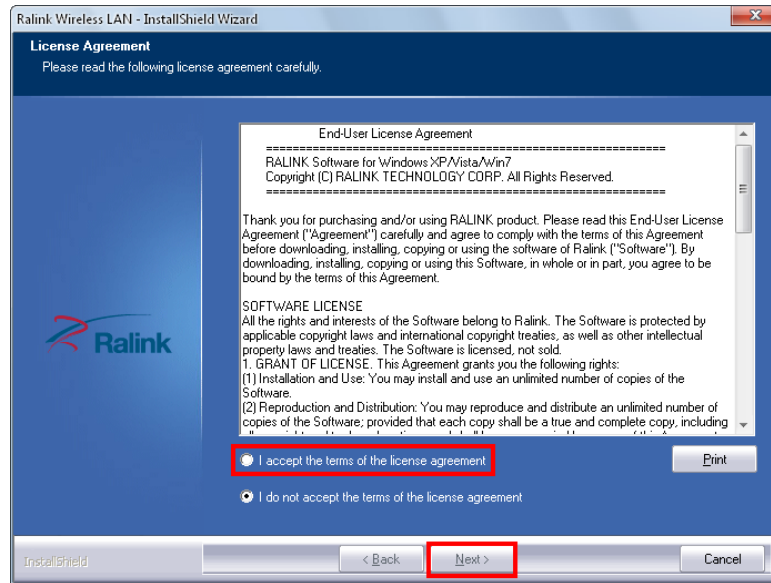
2.3 Installing Drivers and/or Utility

The Installation procedures in different OS are quite similar; please see below for procedures:

1. Insert the Resource CD into your CD-ROM drive. To continue, double-click **My Computer**, and then double-click the **CD/DVD** drive where the installation CD was placed. Double-click **Setup.exe**. Then you will see below windows show up.

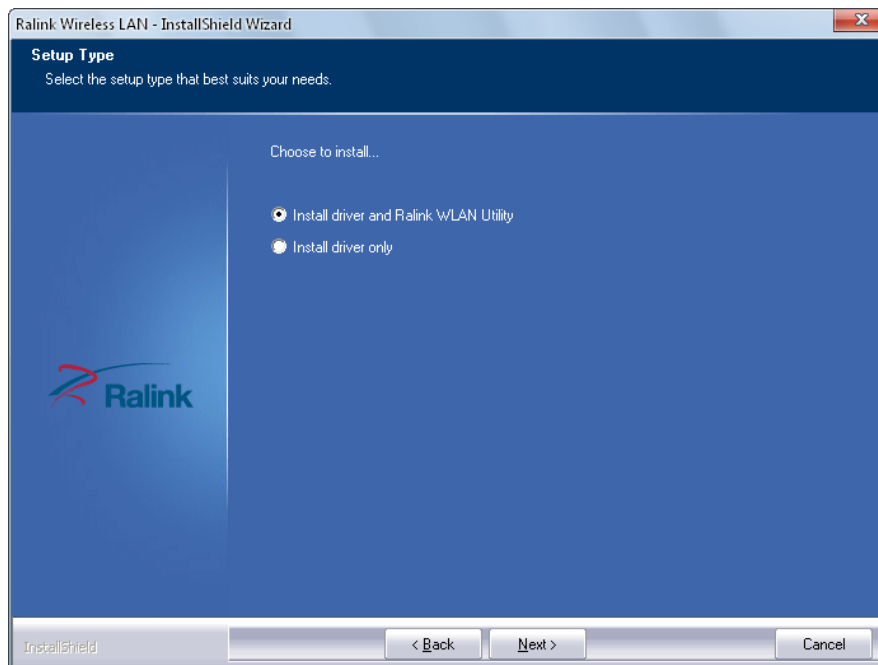


2. The following next window will display. After review, click "**I accept the terms of the license agreement**", then "**Next**" to continue.

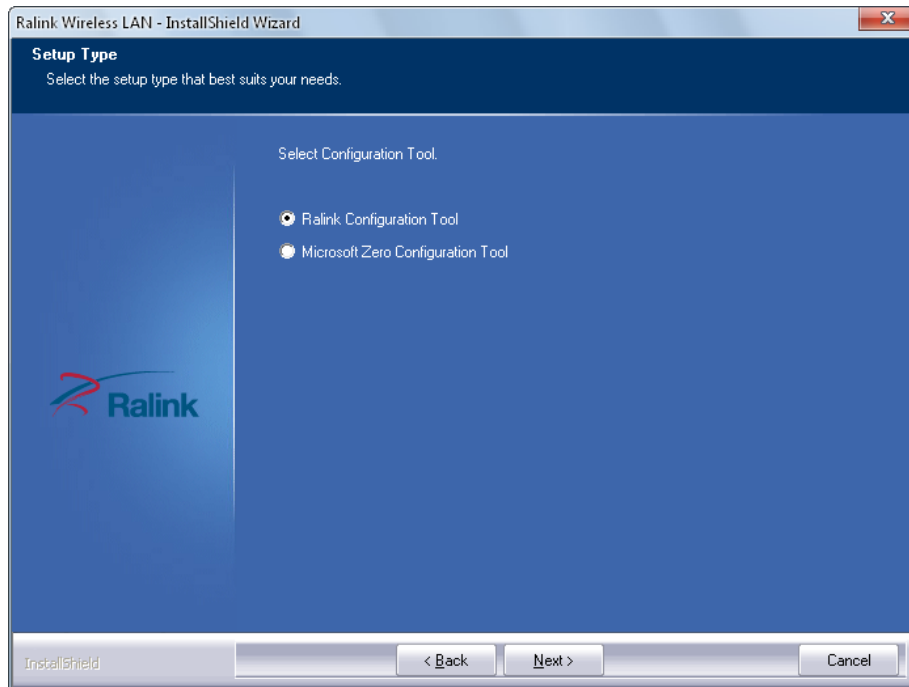


3. You will see next window for you to choose a Setup type. It is recommended that you select:

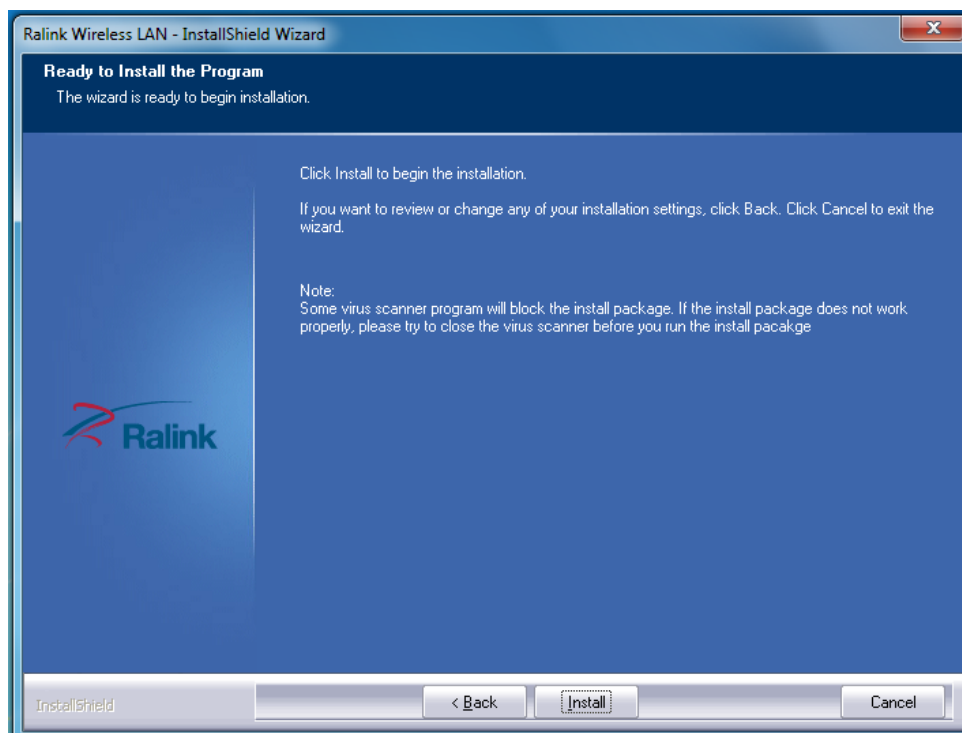
- **Install Driver and Ralink WLAN Utility** for Windows XP.
- Select **Install Driver Only** to install driver only for Windows Vista and Win7.
- Click **Next** to continue.



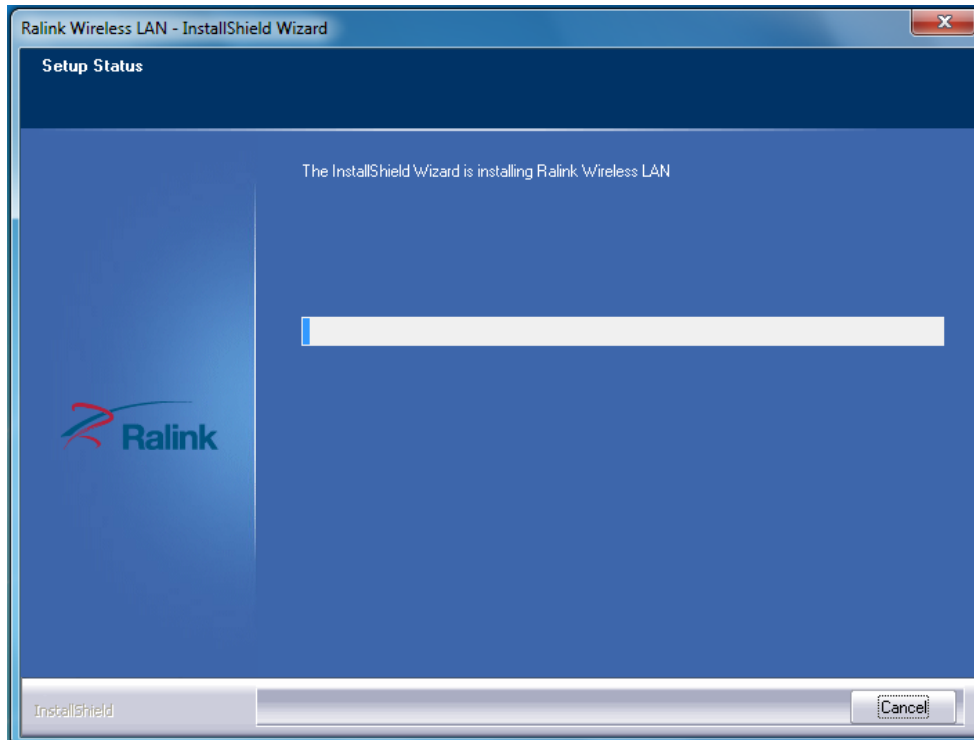
4. For Windows XP, you may see this window pop up; you can choose based **Ralink Configuration Tool** or **Microsoft Zero Configuration tool** as you desire. Click **Next** to Continue.



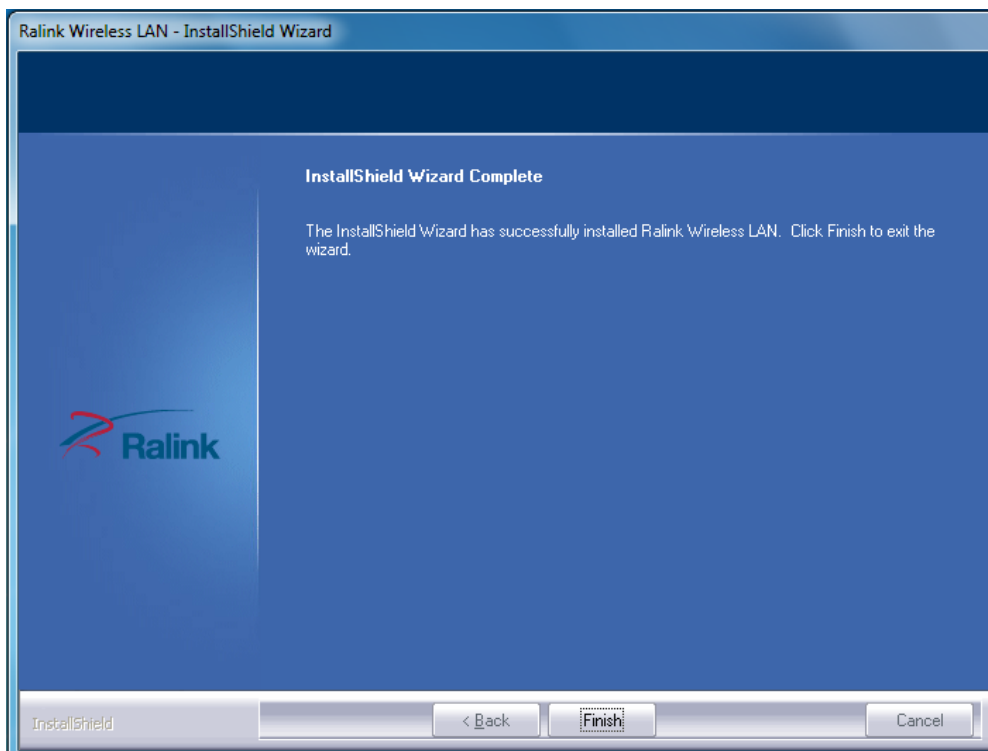
5. Upon Selecting Next, you should see this next window pop up to start installation phrase. You can click **Install** on start the installation phrase.



6. You will see that the installation process under this window.



7. Once the installation process completes, you will see the following window



Note:

For Windows XP, Setup Wizard may notify you of how to proceed with the installation during these steps. Our drivers have been tested thoroughly, and are able to work with the operating system. Click **Continue Anyway** to continue the Installation.



Wireless Connection Guide


This chapter describes how to configure your Adapter for wireless connectivity on your Wireless Local Area Network (WLAN) and use the data security encryption features.

After Installing the Adapter, the Adapter's tray icon will appear in your system tray. It appears at the bottom of the screen, and shows the signal strength using color and the received signal strength indication (RSSI).

In the following instruction for making a network connection, we use the provided Utility to configure your wireless network settings.

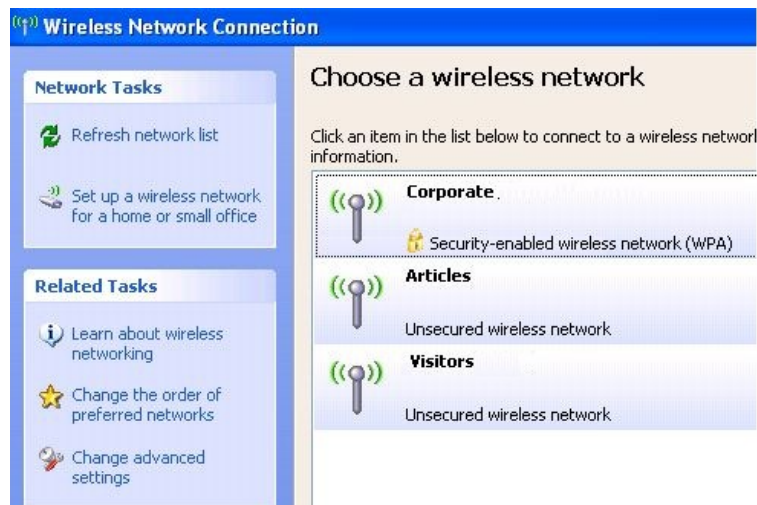
Note: You could use either the software we provide or Microsoft Zero Configuration tool to configure this adapter.

3.1 Connecting with Microsoft Zero Configuration tool (Win XP)

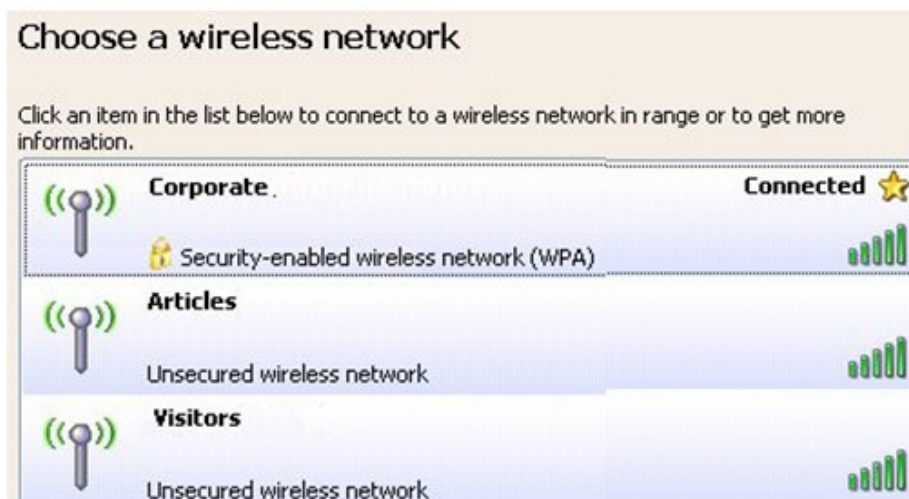
- After specifying the Microsoft Zero Configuration tool to configure your wireless network, right click on the  icon on system tray. Select "**View Available Wireless Networks**" to specify your wireless network.



- The tool shows the available wireless networks. Select your demanding network to connect with.



- If prompted, enter the password/network key for your wireless network and click the Connect button.



3.2 Connecting with Window Vista and Windows 7

You can easily access to wireless with Win Vista and Win7 . First, move your mouse to lower right hand corner as below and click on the icon where arrow pointing to.



Click **Refresh** to get an update of your Wireless Network Connection. This should help you search the SSID of the network you want to connect to.



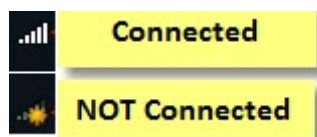
Select your desired SSID, then Click “Connect”.



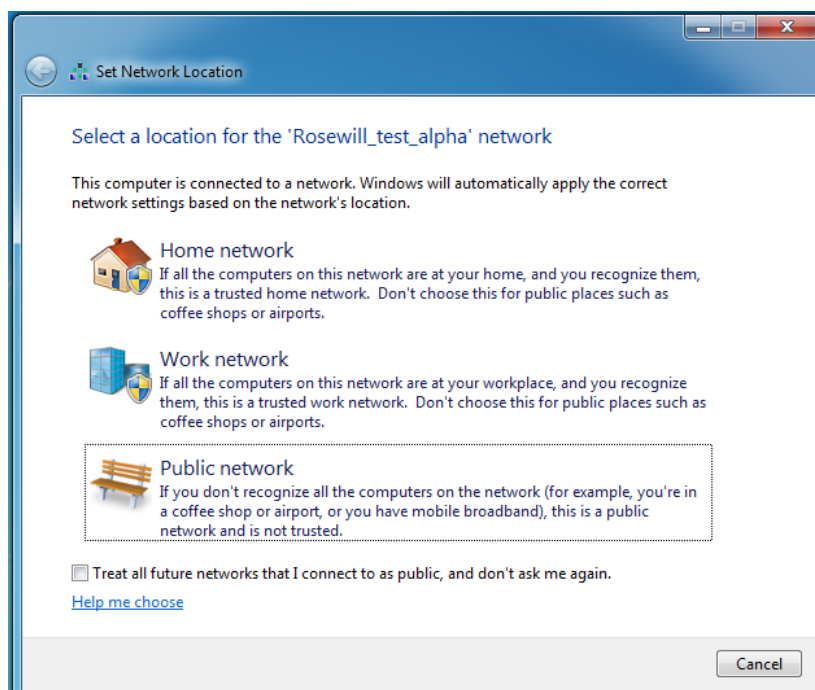
You will be prompt to ask you entering the network security key. Once entered, please click OK to complete.




You should see below in a very short period and find out whether you are connected or now.

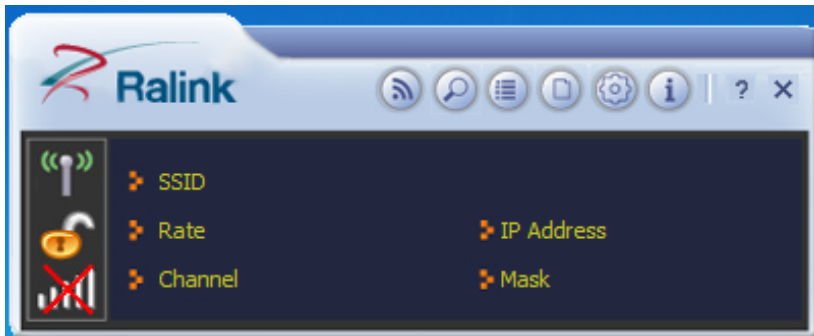
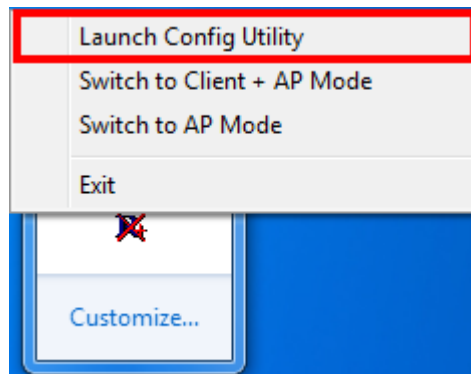


If this is your first time connect, you will see a window show up and ask you for setting up Network Location. Please select the location based on your internet usage.




3.3 Connecting with Ralink Wireless Utility


We also provide a Ralink Wireless Utility for users to connect to a wireless network easily. It provides more information and configuration for this adapter. As default, the Utility will start automatically if you select “**Install driver and Ralink WLAN Utility**” when installing drivers. You can find this icon  and double click to start it on the lower right hand corner of your computer desktop. Or you can **right click** the tray icon and select **Launch Config Utility**.





This is the startup window of the Ralink Wireless Utility


Here is each button's function:

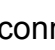
-  **Wi-Fi Direct**
(will appear only if your computer can support this function)

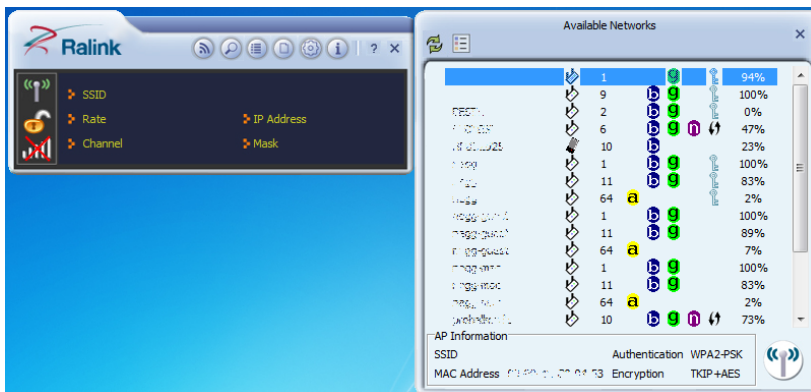
-  **Site Survey**


-  **Link Information**


-  **Profile**

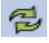
-  **Advanced**

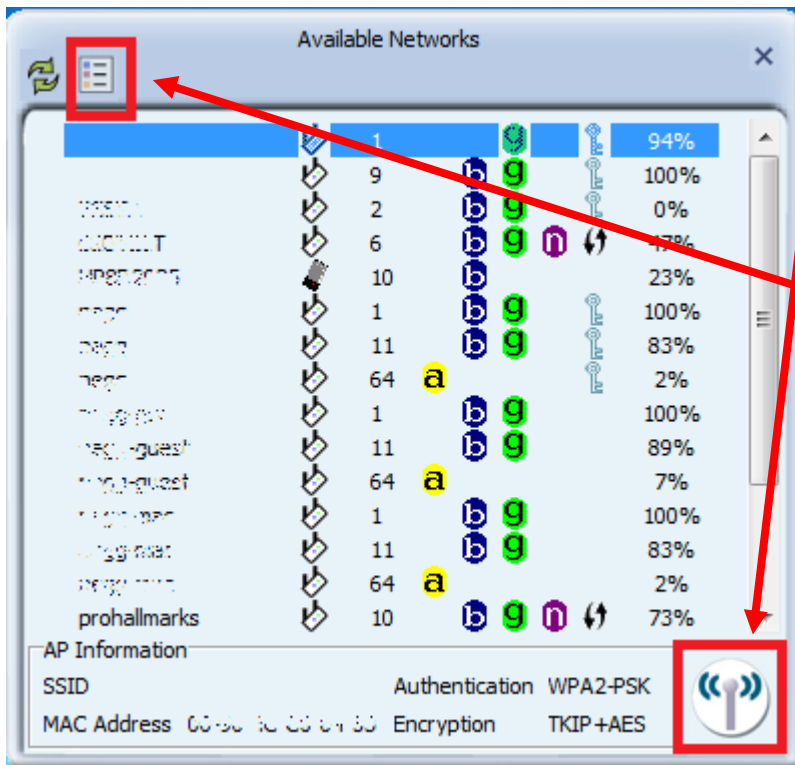
-  **About**




Please first start by selecting  to search nearby wireless signal for connection.


When click on , a window will popup and presents to you the nearby Wi-Fi Signals.

If you did not see the signal you want to connect, please click  to rescan.

**One time connection:**

Please first highlight your desired SSID, and click . Then follow the popup window's direction to connect.

Setup the Profile for all future connection:

Please click  to add the SSID to profile for all future use. For detail.

Now you have completed the setup of your wireless network. You should be ready to surf!

Thank you for purchasing a quality Rosewill Product.

Please register your product at: www.rosewill.com for complete warranty information and future support for your product.

Let us know!

Rosewill Support: techsupport@rosewill.com

Call Center: (800) 575-9885

Web: <http://www.rosewill.com>

Free Manuals Download Website

<http://myh66.com>

<http://usermanuals.us>

<http://www.somanuals.com>

<http://www.4manuals.cc>

<http://www.manual-lib.com>

<http://www.404manual.com>

<http://www.luxmanual.com>

<http://aubethermostatmanual.com>

Golf course search by state

<http://golfingnear.com>

Email search by domain

<http://emailbydomain.com>

Auto manuals search

<http://auto.somanuals.com>

TV manuals search

<http://tv.somanuals.com>