



# USB 2.0 5-Port PCI Adapter RC101

## User Manual



## Overview

USB 2.0 is the fastest USB standard ever. It supports data transfer rate up to 480Mbps, 40 times faster than USB 1.1, even faster than IEEE1394. It makes USB 2.0 ideal for external storage devices, scanners, CD-RWs and much more. Moreover, it is fully backward compatible with current USB 1.1 devices. You can instantly take advantage from the thousands of USB 1.1 products. USB 2.0 is the trend of today's peripherals. Come and join it now!

## Features

- Chipset: NEC 720101
  - Data Transfer Rate: USB 1.1 OHCI 1.5Mbps, 12Mbps  
USB 2.0 EHCI 480Mbps
  - Bus: PCI 2.2 32-bit, 33MHz,5V
  - Connector: NEC USB2.0 4+1PORT 4 external Type A USB ports and 1 internal Type A USB port
- 
- Supports up to 127 devices
  - Supports devices hot swap and wake-up
  - Output current per port = 500mA (max)
  - Supports Windows 98, Windows 98SE, Windows ME, Windows 2000 & Windows XP

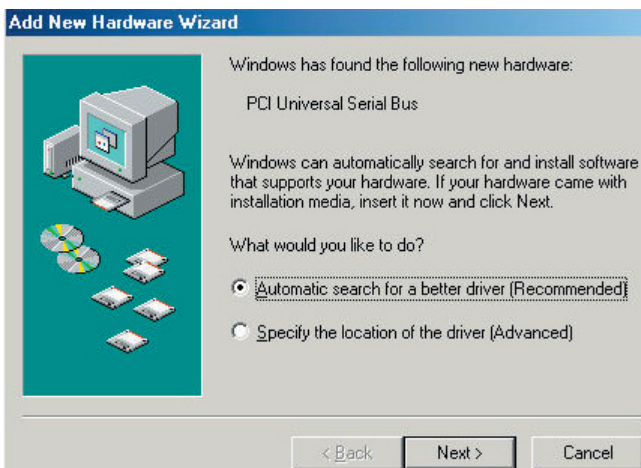
## Driver Installation

Windows /98/98SE/ME

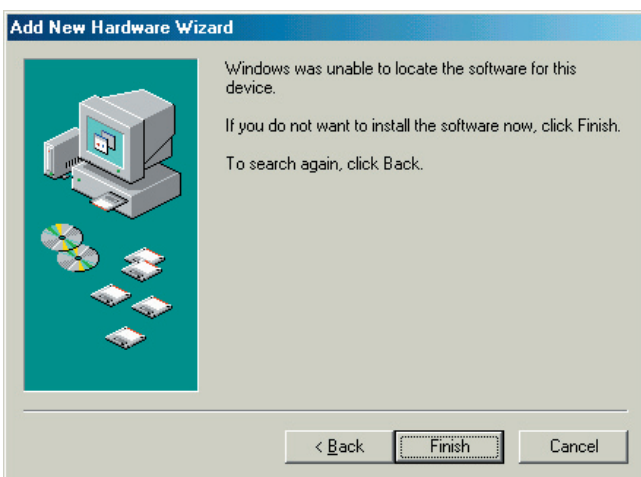
Once the USB 2.0 Host Adaptor is installed and the computer is restarted, Windows will detect the board and attempt to install driver for it.

1. Windows has found the new hardware "NEC USB Open Host Controller(E13+)" two times and automatically installs the driver.
2. Windows has found new hardware "USB Root Hub" two times and automatically installs the driver.
3. Windows has found the new hardware "PCI Universal Serial Bus". Select "Automatic

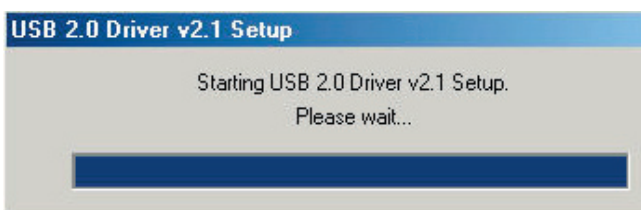
search for a better driver (Recommended)”. Click Next to continue.



4. If no USB 2.0 driver has been installed previously, then Windows will not be able to locate the software for this device. Click Finish to exit “Add New Hardware Wizard”.

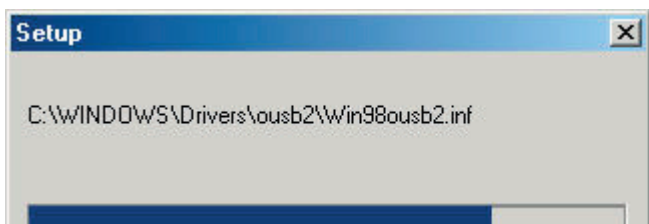


5. Insert the driver CD into CD-ROM drive and select “F:\PCI\_IO\U20\NEC”. Then run the application U2v2\_1.exe”.

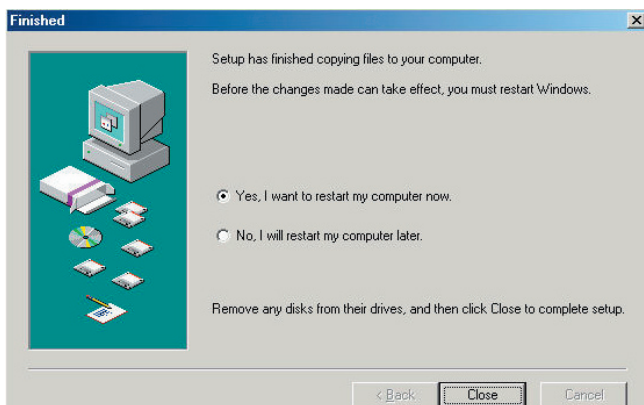


6. After run the application U2v2\_1.exe, the USB 2.0 Driver Setup program will start and copy

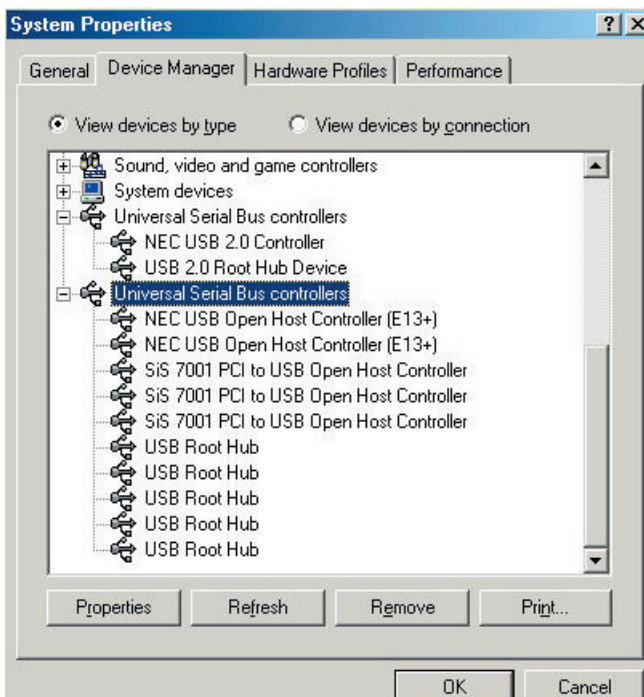
files.



7. Click Close to exit the Setup program and restart your computer.

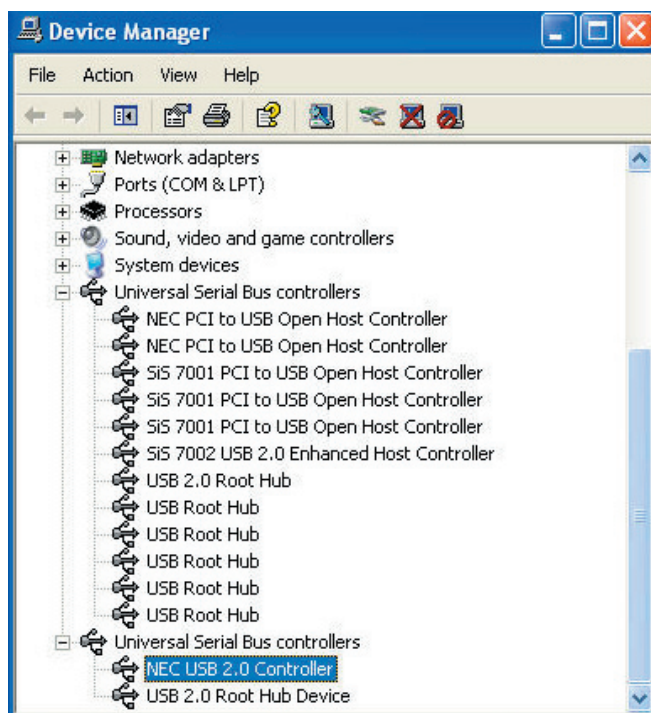


8. If the drivers are installed successfully, you will see the following new devices in Device Manager.



9. If the drivers are installed successfully in Windows2000/XP, you will see the following new

devices in Device Manager.



## Windows 2000 & Windows XP

For USB 2.0 driver, please run D:\U2v2\_1.EXE where D is CD-ROM drive in driver CD. Then follow similar procedures as above to complete the driver installation.

**Thank you for purchasing Rosewill Product.**

Please register your product at [www.rosewill.com](http://www.rosewill.com) for complete warranty information and future support for your product.

## Free Manuals Download Website

<http://myh66.com>

<http://usermanuals.us>

<http://www.somanuals.com>

<http://www.4manuals.cc>

<http://www.manual-lib.com>

<http://www.404manual.com>

<http://www.luxmanual.com>

<http://aubethermostatmanual.com>

Golf course search by state

<http://golfingnear.com>

Email search by domain

<http://emailbydomain.com>

Auto manuals search

<http://auto.somanuals.com>

TV manuals search

<http://tv.somanuals.com>