



1 ports Parallel PCI Adapter RC302

User Manual



Overview

This PCI card is a single 1284 parallel port controller with PCI bus interface and supports the existing centronics printer interface as well as PS2, EPP & ECP modes and uses an all-in-one solution from NetMos Technology, which provides superior performance and unmatched data transfer rates. The most advanced feature is it uses of a single interrupt, which is set automatically by the host system and share among all on-board I/O ports.

Features

- Chipset: NetMos Nm 9715
- Data Transfer Rate: 1.5Mbytes/s(parallel port)
- Bus: PCI 32bit, 33MHz.
- Low power: Single 5V operation
- High speed transfer, single parallel port
- Multi-mode compatible controller (SPP, PS2, EPP &ECP)
- 16Byte FIFO (parallel)
- Software programmable mode selects
- Supports Window98, Window95, Window2000 & Window NT 4.0

Installing the PCI I/O controller card into your computer

Turn off your computer and all external devices connect it.

Disconnect your computer from the power sources.

Open the computer case. Refer to your computer user manual for more details.

Find an available PCI slot and remove the slot bracket. Save the bracket screw for later use.

Align the PCI I/O controller horizontally with respect to the PCI slot and insert it into the slot firmly and evenly. Take care not to force it into the slot. Once you have properly positioned the PCI I/O controller card into the slot, fasten it to the computer case with the bracket screw you have saved.

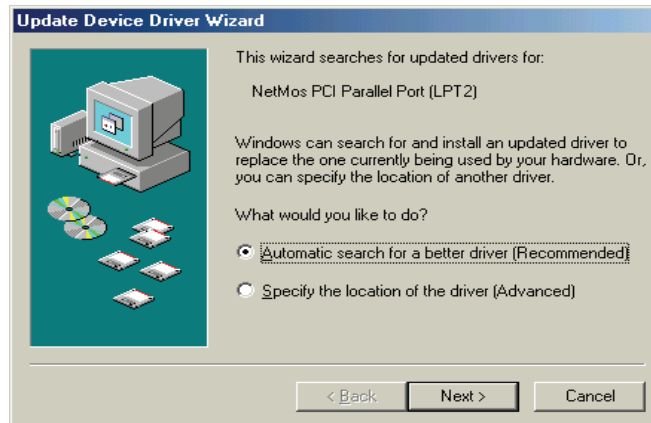
Close the computer case. Make sure to reconnect all the external devices power cords to your computer.

Driver Installation

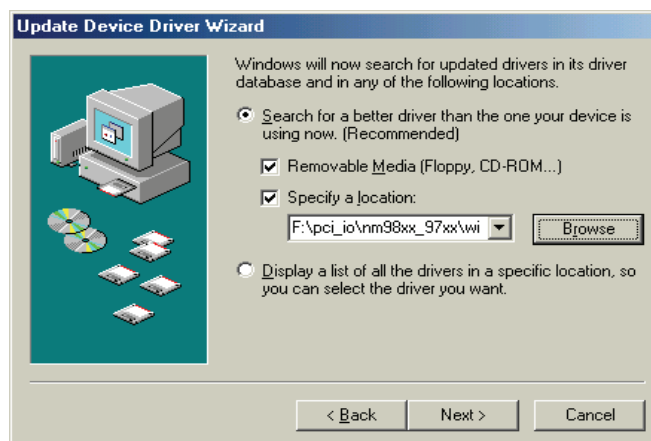
Windows 95/98/2000

Once the PCI I/O card is installed and the computer is restarted, Windows will detect the board and attempt to install driver for it.

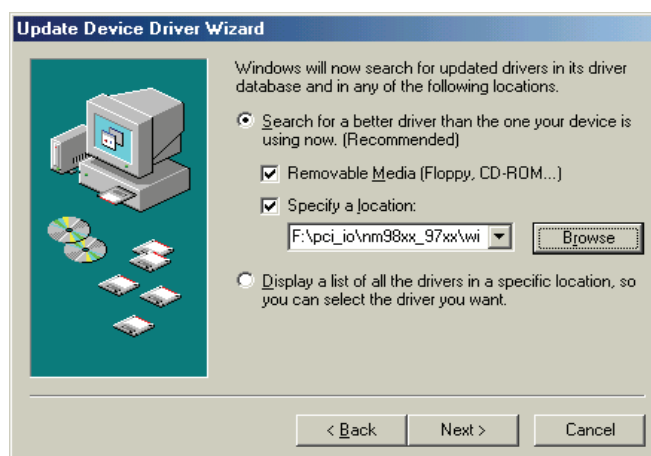
1. Start Windows 95/98/2000/XP
2. The "Update Device driver Wizard" will appear, informing you that it has found a "PCI I/O Card". Click the "**Next**" button.



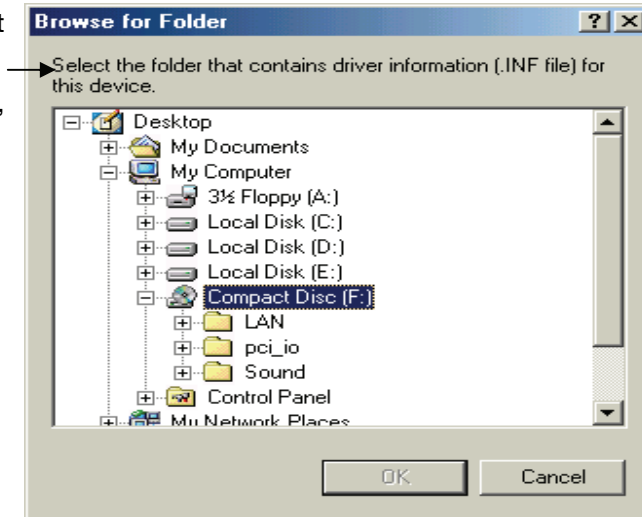
3. Click "**Other Location**" for Windows 95 or "**Specify a location**" for Windows 98 to install the driver.



4. Insert the driver CD in CD-ROM drive(D) and click on the "**Browse**" button.



5. at the “Browse” option, select
 → “CD-ROM(D)
 FOLDER “PCI_I/O\NM97X5\WIN9X”
 “OK” button



6. The “Update Device Driver Wizard” will appear, informing you that it has found the “NetMos PCI I/O Card” driver. Click the “**Next**” button.
- .
7. Follow the instructions to finish up the drive installation.
- .
8. Once Windows 9x has restarted, you can now connect your external devices to the PCI I/O card install the driver for the external devices, please refer to the external device user manual.
- .

Windows NT 4.0

Using the existing hard disk controller in your system, you need to install the ATA/100 driver into Windows NT first. Without ATA/100 driver support, hard drive attached to the ATA/100 IDE controller card can not boot up Windows NT.

Installing drivers with existing Windows NT 4.0:

Make sure Windows NT 4.0 is properly installed into your system first.

Step 1: Start Windows NT 4.0.

Step 2: Insert Driver CD into the CD-ROM drive.

Step 3: Select “**Run**” option in Windows NT.

Step 4: At the “Run” option, click on the “Browse” button.

Step 5: At the Browse for Folder window:

1. Select “**CD-ROM Drive (D)**”
2. Select **NetMosMultiIODrivers.exe**

3. Click on the Open button

Step 6: Finally, click the “OK” button

Step 7: Follow the instruction to finish the driver installation. Your system will automatically restart in order to complete the driver installation.

Installing DOS Driver

Copy “**D:\PCI_IO\NM97X5\DOS\NMDOSIN.EXE** ” to your hard disk and run it.

Thank you for purchasing a quality Rosewill Product.

Please register your product at : www.rosewill.com/ for complete warranty information and future support for your product.

Free Manuals Download Website

<http://myh66.com>

<http://usermanuals.us>

<http://www.somanuals.com>

<http://www.4manuals.cc>

<http://www.manual-lib.com>

<http://www.404manual.com>

<http://www.luxmanual.com>

<http://aubethermostatmanual.com>

Golf course search by state

<http://golfingnear.com>

Email search by domain

<http://emailbydomain.com>

Auto manuals search

<http://auto.somanuals.com>

TV manuals search

<http://tv.somanuals.com>