



1394a 3+1 Ports NEC PCI Card RC502
User Manual



Overview

The IEEE1394 multimedia connection (also known as Fire Wire by Apple Computer, and iLink by Sony) features hot swapping, high-speed performance, peer to peer communication and daisy chained which can accept up to 63 devices connected simultaneously.

The idea of IEEE1394 standard is all other devices and peripherals that connected outside of PC can simply plug into 1394 port instead of opening case and adding a circuit board. IEEE1394 standard is an important enabling technology for the emerging multimedia market.

Features

- Chipset: NEC single-chip IEEE 1394 controller uPD72873 or NEC single-chip IEEE 1394 controller uPD72874
- Data Transfer Rate: 1394a 100/200/400Mbps, OHCI 1.1
- Bus: PCI 2.2 32 bit, 33MHz, 3.3V
- Connector: 2 external 1394 6-pin rear connectors and 1 internal 1394 6-pin connector (for uPD72873)
- 3 external 1394 6-pin rear connectors and 1 internal 1394 6-pin connector (for uPD72874)
- Supports up to 63 devices.
- Supports devices hot swap.
- Supports Power class 0012(1)
- Auxiliary power connector J5 to increase the power available to 1394a bus to up to 15W.
- MS Windows compatible including DV and SBP-2 drivers, supports all common camcorders, disk drives, printers and scanners with 1394 interfaces.
- Supports Windows 98, Windows 98SE, Windows ME, Windows 2000 & Windows XP

Notes

The external 1394 connector J1 (top-most) shares with the internal connector J4. If both connectors are connected to devices, only the device connected to J1 will work.

Troubleshooting

If your system doesn't work properly after connecting to a 1394 device, please turn off your computer. Connect the auxiliary power connector (J5) to power supply and then restart again. If it still doesn't solve the problem, please refer to the specifications of your 1394 device. Check the power consumption and make sure it doesn't exceed 15W.

Driver Installation

Windows 98/98SE/ME

Once the IEEE 1394 Adaptor is installed and the computer is restarted, Windows will detect the board and attempt to install driver for it.

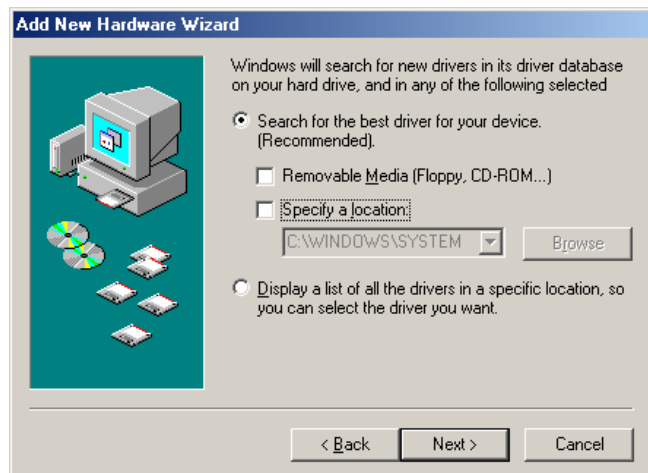
1. New hardware “NEC Firewarden OHCI Computer IEEE 1394 Host Controller” found, then click “Next” to continue.



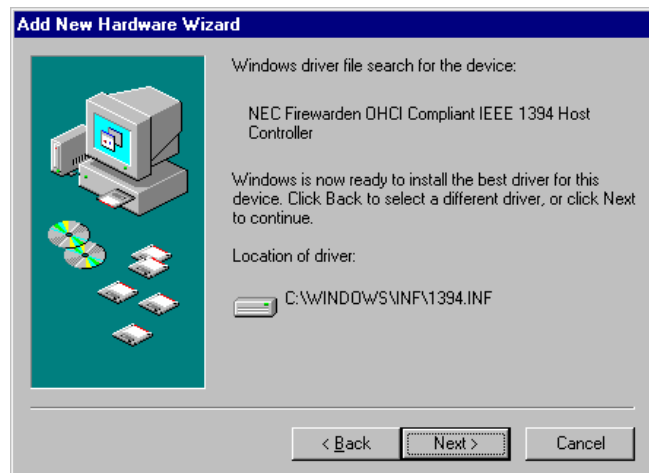
2. After Windows has found the new hardware, Select “Search for the best driver for your device (Recommended)” and click “Next” to continue.



3. Select “Search for the best driver for your device”. Uncheck all boxes and then click “Next”.



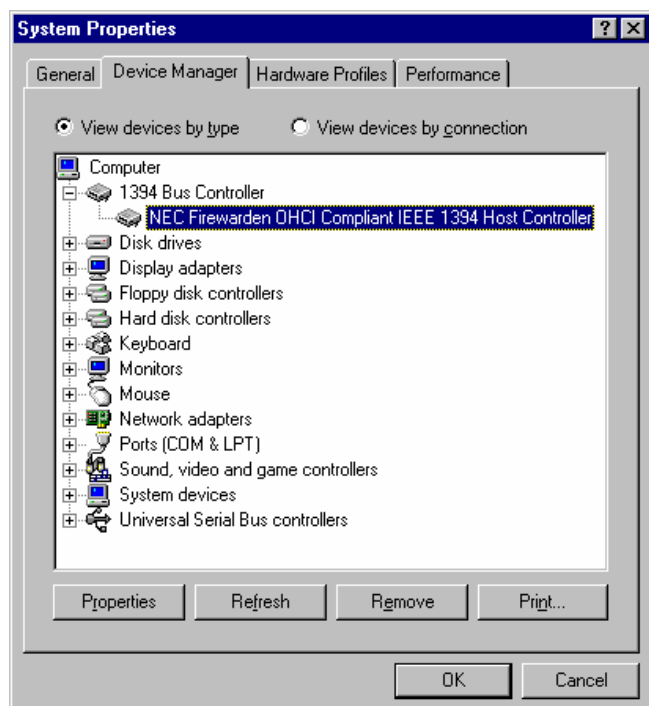
4. Windows is ready to install the driver for the device, and click “Next” to continue installation.



5. Windows has finished the driver installation and click “Finish”, then restart your computer



6. If the drivers are installed successfully, you will see the following new devices in Device Manager.



Windows 2000 & Windows XP

After installing the IEEE 1394 Adaptor into an available PCI slot, Windows 2000 & Windows XP will find the new device. It will then install the driver for it seamlessly. Finally, an “NEC Firewarden OHCI Compliant IEEE 1394 Host Controller” will be added to your system.

Thank you for purchasing a quality Rosewill Product.

Please register your product at : www.rosewill.com/ for complete warranty information and future support for your product.

Free Manuals Download Website

<http://myh66.com>

<http://usermanuals.us>

<http://www.somanuals.com>

<http://www.4manuals.cc>

<http://www.manual-lib.com>

<http://www.404manual.com>

<http://www.luxmanual.com>

<http://aubethermostatmanual.com>

Golf course search by state

<http://golfingnear.com>

Email search by domain

<http://emailbydomain.com>

Auto manuals search

<http://auto.somanuals.com>

TV manuals search

<http://tv.somanuals.com>