



2 ports Parallel PCIe Card RC304-E

User Manual



Features and Benefits

- Compliant with PCI Express Base Specification 1.0a
- Supports Standard Parallel Port(SPP), Enhanced Parallel Port(EPP) & Enhanced Capability Port(ECP)
- Data transfer rate up to 1.5MB/Sec
- PCI-Express X1
- 2 x 25 pins parallel connectors

Package Contents

- PCIe Parallel Card 2 Ports
- Driver CD
- User Manual

System Requirements

- Windows® 2000/XP/Server 2003
- PCI Express-enabled system with an available PCI Express slot

Hardware Installation

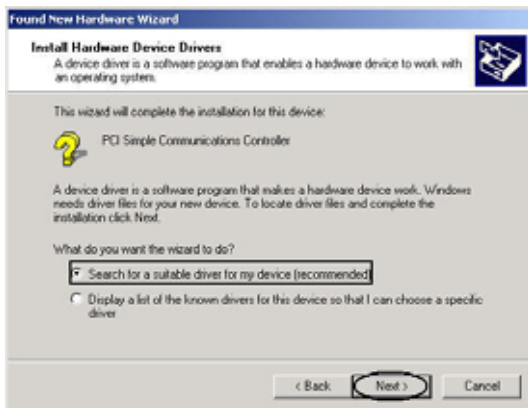
1. Turn Off the power to your computer.
 2. Unplug the power cord and remove your computer's cover.
 3. Remove the slot bracket from an available PCIe slot.
 4. To install the card, carefully align the card's bus connector with the selected PCIe slot on the motherboard. Push the board down firmly.
 5. Connect the system power source to the board's power connector.
 6. Replace the slot bracket's holding screw to secure the card.
- Replace the computer cover and reconnect the power cord.

Driver Installation

Please make sure the board is installed before proceeding with driver installation.

For Windows® 2000

1. At the **Found New Hardware Wizard**, click **Next**.
2. Select **Search for a suitable driver for my device(recommended)**, and click **Next**.



3. Check **Specify a location**, uncheck the other boxes, then click **Next**.

4. Insert the Driver CD, type in **D:\PCIe\2P\2000**, then click **OK**. (Change **D:** to match your CD-ROM driver letter)

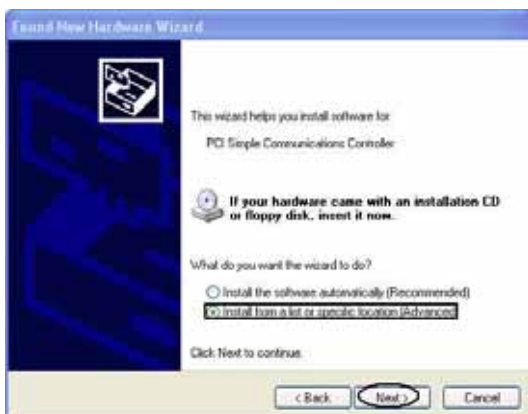


5. Click **Next** and **Finish**.

6. Restart Windows to complete the installation.

For Windows® XP

1. At the **Found New Hardware Wizard**, select **Install from a list or specific location(Advanced)**, then click **Next**.



2. Insert the Driver CD, check **Include this location in the search**, uncheck the other box, type in **D:\PCIe\2P\XP**, then click **OK**. (Change **D:** to match your CD-ROM drive letter)



3. If the **Hardware Installation** window pops up, click **Continue Anyway**, then **Finish**. Our driver has been thoroughly tested for stability and compatibility.

4. Repeat steps 1-3 two more times.

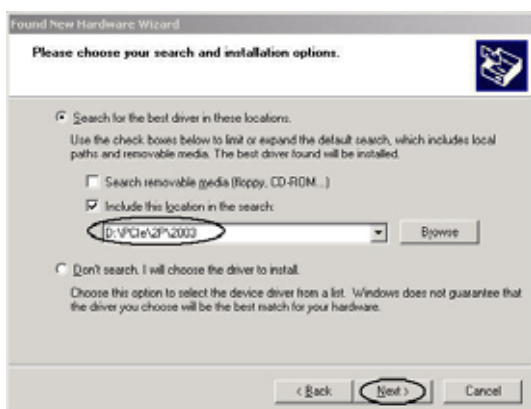
5. Restart Windows to complete the installation.

For Windows® Server 2003

1. At the **Found New Hardware Wizard**, select **Install from a list or specific location(Advanced)**, then click **Next**.



2. Insert the Driver CD, check **Include this location in the search**, uncheck the other box, type in **D:\PCIe\2P\2003**, then click **OK**. (Change **D:** to match your CD-ROM drive letter)



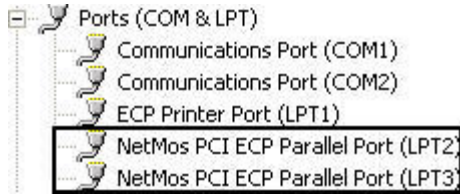
3. If the **Hardware Installation** window pops up, click **Continue Anyway**, then **Finish**. Our driver has been thoroughly tested for stability and compatibility.

4. Repeat steps 1-3 two more times.

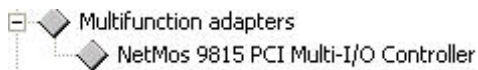
Restart Windows to complete the installation.

To Verify Windows® 2000/XP/Server 2003 Installation

1. Right click **My Computer**, then click **Manage**. Click **Device Manager**.
2. Click on the +(plus sign) in front of **Ports(COM & LPT)**, two **NetMos PCI ECP Parallel Port ...** should be displayed.



3. Double click **Multifunction adapters**, **NetMos 9815 PCI Multi-I/O Controller** should be displayed.



Change Parallel Port Address

Some parallel devices need a specific parallel port in order to work. If your parallel devices works properly, do not change this settings.

For Windows® 2000/XP/Server 2003 Installation

1. From the **Device Manager** window double click **Ports(COM & LPT)**, then double click the **NetMos PCI ECP Parallel Port ...**
 2. Click **Port Settings** tab.
 3. At the **LPT Port Number** box, click the down arrow and select an LPT port that is not in use.
- Click **OK**, then close **Device Manager** to save the changes.

Thank you for purchasing a quality Rosewill Product.

Please register your product at : www.rosewill.com for complete warranty information and future support for your product.

Free Manuals Download Website

<http://myh66.com>

<http://usermanuals.us>

<http://www.somanuals.com>

<http://www.4manuals.cc>

<http://www.manual-lib.com>

<http://www.404manual.com>

<http://www.luxmanual.com>

<http://aubethermostatmanual.com>

Golf course search by state

<http://golfingnear.com>

Email search by domain

<http://emailbydomain.com>

Auto manuals search

<http://auto.somanuals.com>

TV manuals search

<http://tv.somanuals.com>