



WIRELESS ADAPTER RNX-G1LX

QUICK INSTALLATION GUIDE

For advanced configuration, refer to the User's Manual in the CD-ROM provided.

Installation

Warning! Do not cover or block the airflow to the adapter. The adapter will reach a high temperature during use.

Before you proceed with the installation, please notice the following descriptions.

Note1: The following installation was operated under Windows XP. (Procedures are similar for Windows 98SE/Me/2000/Vista.)

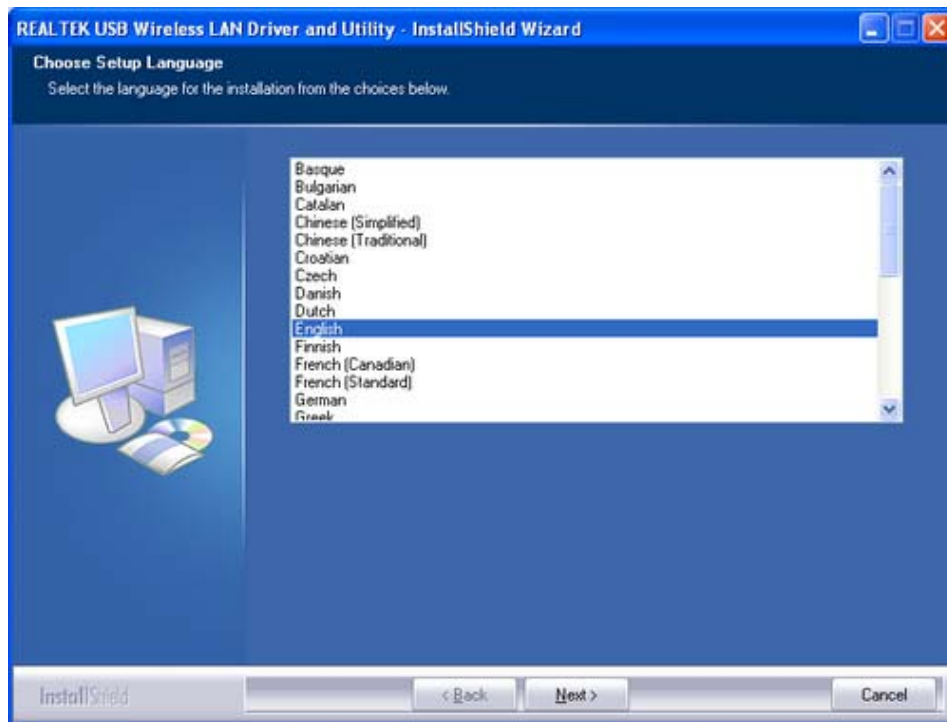
Note2: If you have installed any other WLAN USB driver & utility before, please uninstall the old version first.

Note3: Do not plug the wireless LAN USB adapter into your computer USB port before installing the software program

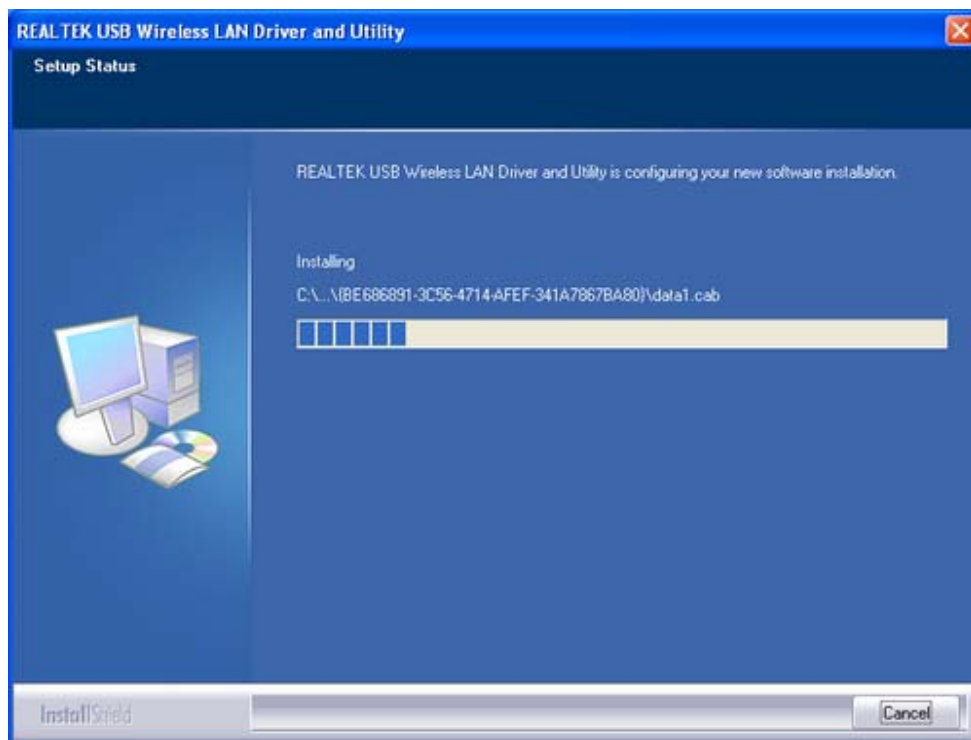
1. Insert the software program CD , then auto installation window pops up on following:
2. Click **Driver Installation**



3. Choose a set up language. Click **Next** to process the installation.



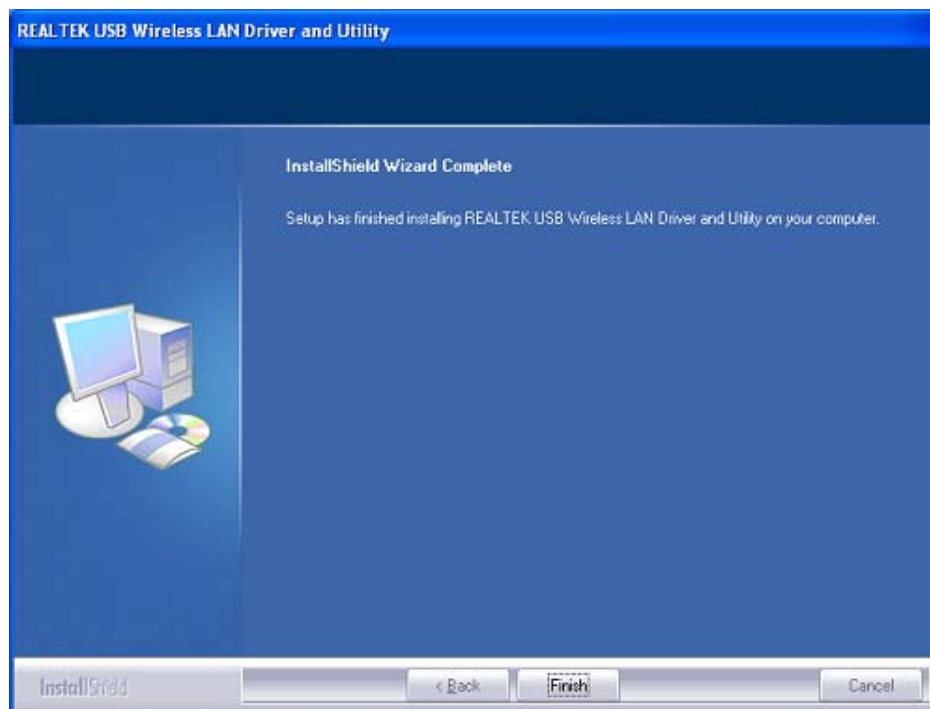
4. The system starts software installation of the WLAN USB adapter.



- On Windows Logo Software Installation screen, click **Continue Anyway** to continue.
Note: Not all the drivers will have this message box.



- Click **Finish** to complete the installation.



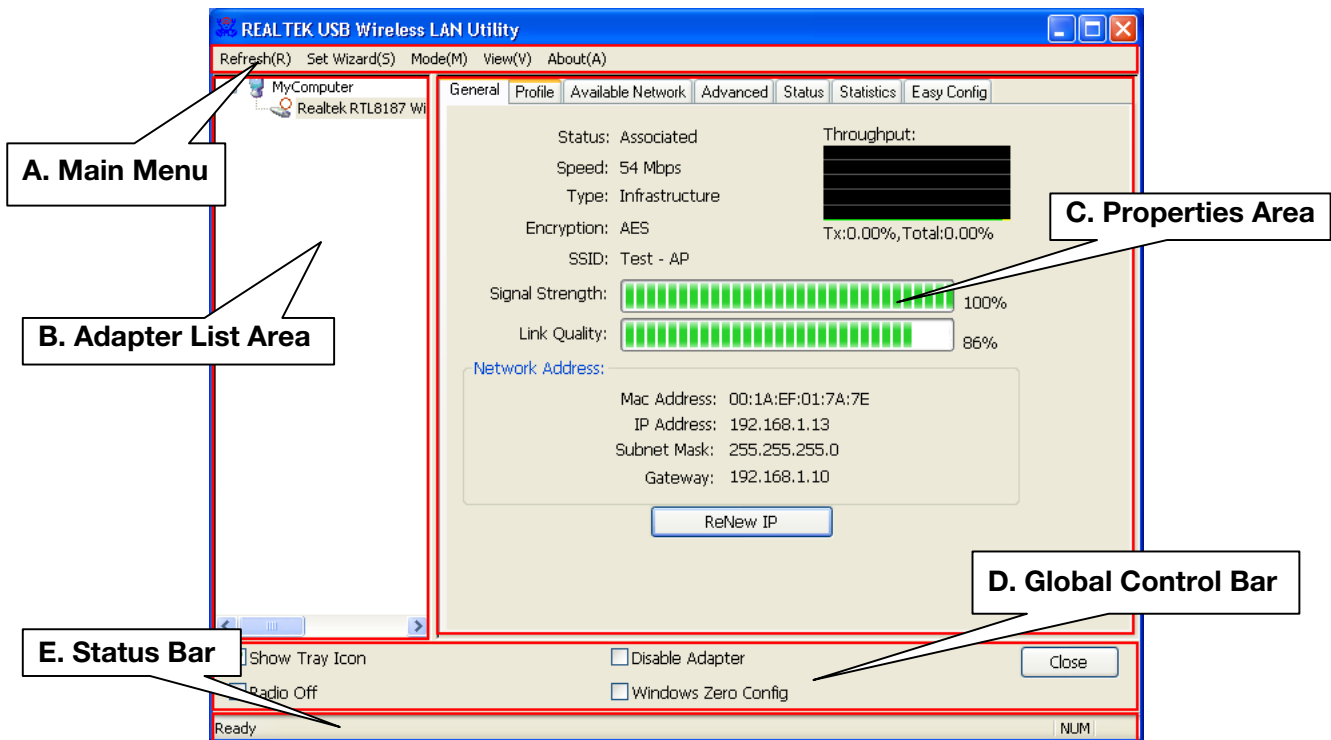
7. After click **Finish** to complete the installation , under Windows XP <ALL Programs> menu , REALTEK USB wireless LAN Utility program installed. Please reboot the system after all installation complete.



8. Insert the wireless LAN USB adapter into your computer USB port , the computer detected and active the wireless LAN USB adapter automatically.

Rt WLAN: Wireless LAN Management GUI

Introduction of Main Window



A. Main Menu

The main menu includes five submenus.

1. Refresh(R)

When clicking the refresh menu, you can update and re-enumerate the contents of adapter list area.

2. Set Wizard(S)

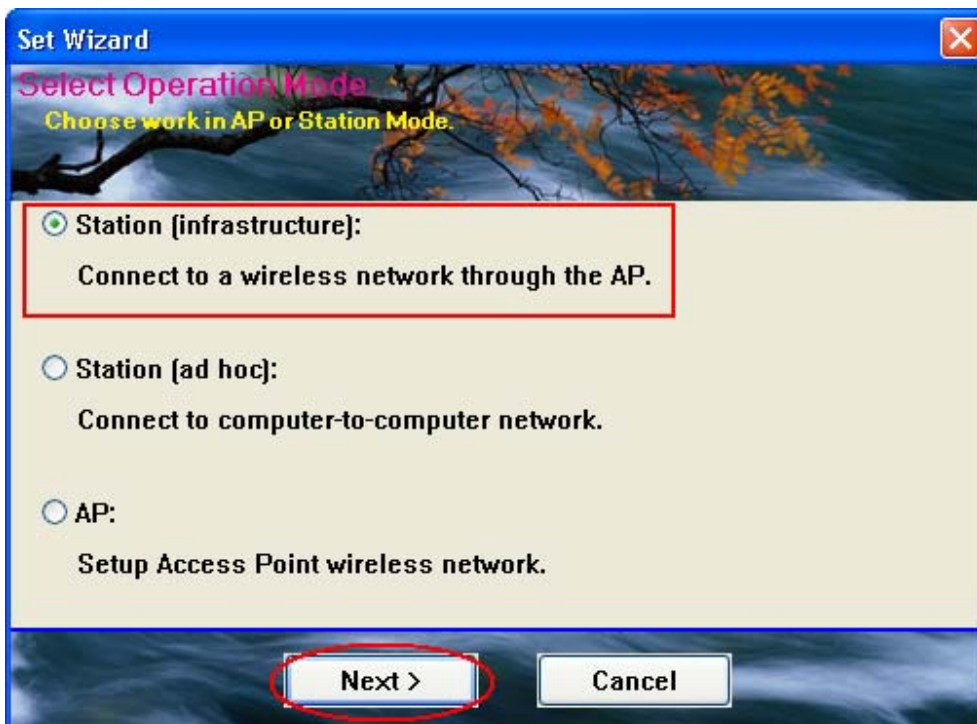
There are 2 modes for RNX-G1LX.

If you want to connect your computer directly to a wireless router,
please select station mode (2.1).

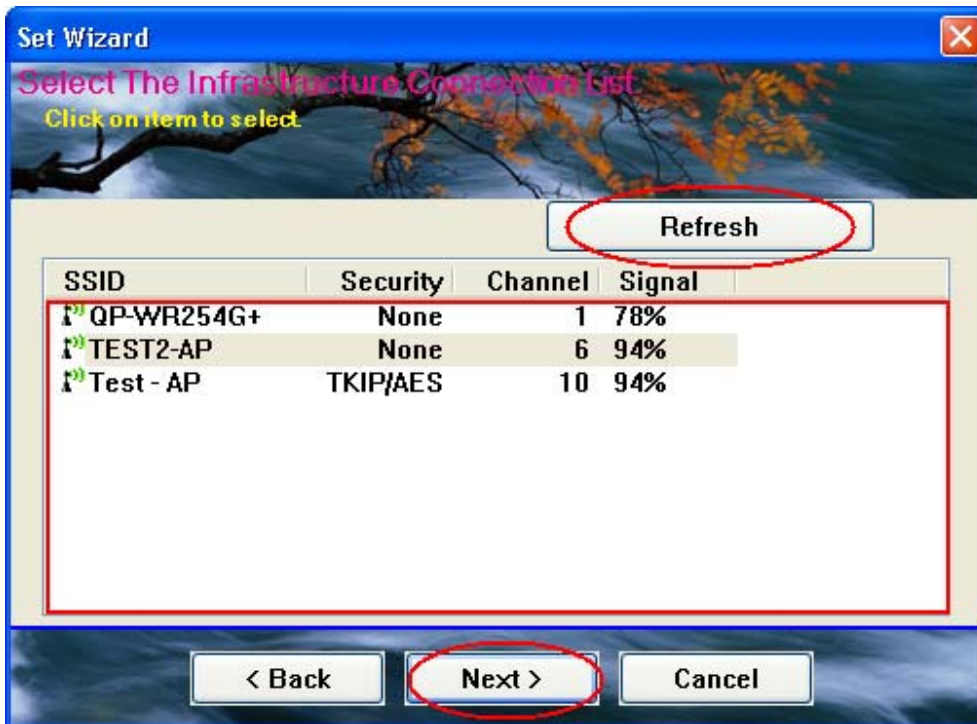
If you want to set up RNX-G1LX as an AP, please select AP mode (2.2)

2.1 Wizard-1 (station mode)

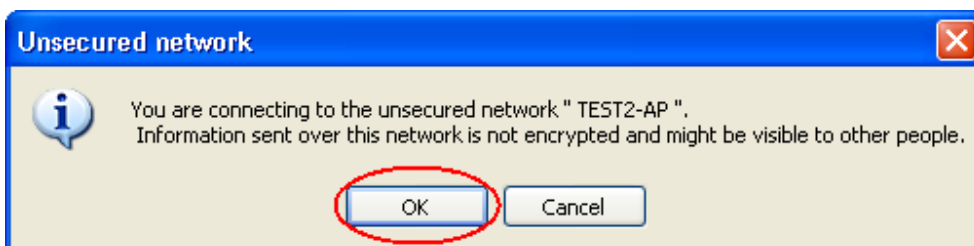
1. Select **Set Wizard(S)** then select **Station (infrastructure)** then click **Next**.



- From red box you can access the AP you search or click **Refresh** button to search available AP. Select one and click **Next**.



- Click **OK**



4. Click **OK** to connect

If password is needed, you need to fill in password at green box. Click **OK** to connect.

Wireless Network Properties:

Profile Name: TEST2-AP

Network Name (SSID): TEST2-AP

This is a computer-to-computer (ad hoc) network; wireless access points are not used.

Channel: 6 (2437MHz)

Wireless network security

This network requires a key for the following:

Network Authentication: Open System

Data encryption: Disabled

ASCII PASSPHRASE

Key index (advanced): 1

Network key:

Confirm network key:

802.1x configure

EAP TYPE : GTC

Tunnel :

Username :

Identity :

Password :

Certificate :

OK Cancel

5. Click Finish and now you can access to internet.

Set Wizard

Setup TCP/IP
Chooses automatic or manual obtains IP.

TCP/IP

Obtain an IP address automatically

Use the following IP address:

IP Address:

Subnet Mask:

Default gateway:

DNS

Obtain DNS server address automatically

Use the following DNS server addresses:

Preferred DNS server:

Alternate DNS server:

< Back Finish

Thank you for purchasing a quality Rosewill Product.

Please register your product at : www.rosewill.com for complete warranty information and future support for your product.

Free Manuals Download Website

<http://myh66.com>

<http://usermanuals.us>

<http://www.somanuals.com>

<http://www.4manuals.cc>

<http://www.manual-lib.com>

<http://www.404manual.com>

<http://www.luxmanual.com>

<http://aubethermostatmanual.com>

Golf course search by state

<http://golfingnear.com>

Email search by domain

<http://emailbydomain.com>

Auto manuals search

<http://auto.somanuals.com>

TV manuals search

<http://tv.somanuals.com>