



Wireless N Adapter RNX-N250UBE

*User Manual*

## FCC STATEMENT

This equipment has been tested and found to comply with the limits for a Class B digital device, pursuant to part 15 of the FCC Rules. These limits are designed to provide reasonable protection against harmful interference in a residential installation. This equipment generates, uses and can radiate radio frequency energy and, if not installed and used in accordance with the instructions, may cause harmful interference to radio communications. However, there is no guarantee that interference will not occur in a particular installation. If this equipment does cause harmful interference to radio or television reception, which can be determined by turning the equipment off and on, the user is encouraged to try to correct the interference by one or more of the following measures:

- Reorient or relocate the receiving antenna.
- Increase the separation between the equipment and receiver.
- Connect the equipment into an outlet on a circuit different from that to which the receiver is connected.
- Consult the dealer or an experienced radio/ TV technician for help.

This device complies with part 15 of the FCC Rules. Operation is subject to the following two conditions:

- 1) This device may not cause harmful interference.
- 2) This device must accept any interference received, including interference that may cause undesired operation.

Any changes or modifications not expressly approved by the party responsible for compliance could void the user's authority to operate the equipment.

## FCC RF Radiation Exposure Statement

This equipment complies with FCC RF radiation exposure limits set forth for an uncontrolled environment. This device and its antenna must not be co-located or operating in conjunction with any other antenna or transmitter.

"To comply with FCC RF exposure compliance requirements, this grant is applicable to only Mobile Configurations.

The antennas used for this transmitter must be installed to provide a separation distance of at least 20 cm from all persons and must not be co-located or operating in conjunction with any other antenna or transmitter."

## CE Mark Warning

This is a class B product. In a domestic environment, this product may cause radio interference, in which case the user may be required to take adequate measures.

## National Restrictions

### 2400.0-2483.5 MHz

Country	Restriction	Reason/remark
Bulgaria		General authorization required for outdoor use and public service
France	Outdoor use limited to 10 mW e.i.r.p. within the band 2454-2483.5 MHz	Military Radiolocation use. Refarming of the 2.4 GHz band has been ongoing in recent years to allow current relaxed regulation. Full implementation planned 2012
Italy		If used outside of own premises, general authorization is

		required
Luxembourg		General authorization required for network and service supply(not for spectrum)
Norway	Implemented	This subsection does not apply for the geographical area within a radius of 20 km from the centre of Ny-Ålesund
Russian Federation		Only for indoor applications

**Note:** Please don't use the product outdoors in France.

# Table of Content

Chapter 1 Overview .....	5
Package Content .....	5
1.1 Overview of the Product.....	5
1.2 Features.....	6
1.3 System Requirement.....	6
1.4 Specification.....	7
Chapter 2 Installation Guide.....	8
2.1 Software Installation.....	8
Chapter 3 Wireless Connection Guide.....	11
3.1. Connecting with Microsoft Zero Configuration tool (Win XP) .....	11
3.2. Connecting with Window 7.....	12
3.3. Connecting with Wireless LAN Utility .....	13
Chapter 4 Utility Configuration – Win XP’s Station Mode.....	16
4.1. General .....	16
4.2. Profile.....	17
4.2.1 Add .....	17
4.2.2 Remove .....	19
4.2.3 Edit .....	19
4.2.4 Duplicate.....	20
4.2.5 Set default .....	21
4.3. Available Network .....	22
4.4. Status.....	23
4.5. Statistics.....	24
4.6. Wi-Fi Protect Setup.....	25
4.6.1 Method 1 PIN Input Config (PIN) .....	25
4.6.2 Method 2 Push Button .....	27
FAQ.....	29

# Chapter 1 Overview

Thank you for choosing Rosewill's 802.11n 2T2R Wireless USB adapter – RNX-N250UBE. RNX-N250UBE is a powerful 300Mbps USB 2.0 Adapter into PCs or NB without any hassle. The Adapter can be used in Ad-Hoc mode to connect directly with other cards for peer-to-peer file sharing or in Infrastructure mode to connect with a wireless access point or router for access to the Internet in your office or home network. This chapter is to introduce you more about this Wireless Adapter.

## Package Content

Before getting started, please verify that your package includes the following items:

1. Rosewill RNX-N250UBE Wireless USB Adapter x 1
2. 5 dBi Antenna x2
3. Quick Installation Guide x 1
4. Resource CD x 1, including:
  - Rosewill Wireless N Client Utility and Driver
  - User Manual
5. USB Cradle with 45" (114 cm) USB cable x1

### Note:

Make sure that the package contains the above items. If any of the listed items are damaged or missing, please contact with your distributor.

## 1.1 Overview of the Product

The adapter is an 802.11n client device; it is designed to provide a high-speed and unrivaled wireless performance for your computer or notebook. With a faster wireless connection, you can get a better Internet experience, such as downloading, gaming, video streaming and so on.



With the 802.11n technology, higher throughput improvements using MIMO (multiple input, multiple output antennas), the RNX-N250UBE's transfer rate up to 300Mbps for maximum throughput. It can also interoperate with other wireless (802.11b, 802.11g) products. The adapter supports 64/128-bit WEP, WPA and WPA2 encryption to prevent outside intrusion and protect your personal information from being exposed.

The adapter is easy to install and manage. The Quick Setup Wizard guides you step-by-step through the installation process; the Rosewill Wireless N Client Utility helps you create a wireless connection immediately.

With unmatched wireless performance, reception, and security protection, the RNX-N250UBE is the best choice for easily adding or upgrading wireless connectivity to your notebook and computer.

## 1.2 Features

- Comply with IEEE 802.11b, 802.11g and 802.11n standard for 2.4GHz Wireless LAN
- Support advanced 2 x 2 MIMO Technology with up to 300Mbps data transfer rate
- Support 64/128-bit WEP, WPA and WPA2 wireless security modes
- Windows 7-32/64 bit, Vista 32/64 bit, XP, 2000, MAC OSX, Linux support
- Supports Sony PSP X-link for online gaming
- Supports roaming between access points when configured in Infrastructure mode
- Easily connect and secure your wireless network with WPS button (Wi-Fi Protected Setup)
- 2x 5 dBi External Antenna with Extended USB Base for best signal receive and further coverage, and less dead spot.

## 1.3 System Requirement

You must have at least the following

- A laptop computer/desktop PC with an available USB port
- At least a 300MHz processor and 32MB of memory
- Windows OS for Win98SE, ME, 2000, XP, Vista
- A CD-ROM Drive
- USB controller properly installed and working in the computer
- A 802.11n 、 802.11g or 802.11b Wireless Access Point/Router (for infrastructure Mode) or another 802.11n 、 802.11g or 802.11b wireless adapter (for Ad-Hoc; Peer-to-Peer networking mode).

## 1.4 Specification

Specifications	
Standard	IEEE 802.11n, IEEE 802.11g, IEEE 802.11b
Interface	USB 2.0
Frequency Range	2.4-2.4835GHz
Wireless Transmit Power	18dBm (max. EIRP)
Modulation Technology	OFDM/CCK/16-QAM/64-QAM
Security	Support 64/128 bit WEP, WPA-PSK/WPA2-PSK
Antenna	2x external detachable 5dBi Antenna
System Support	Windows 2000/ XP/ Vista/ 7 (32/64bit), Linux Kernel 2.6.x, and MAC OSX 10.4, 10.5, 10.6, 10.7
Temperature	Operating: 0°C~40°C (32°F~104°F)
	Storage: -40°C~70°C (-40°F~158°F)
Humidity	Operating: 10% - 90%, Non-Condensing
	Storage: 5%~90% Non-Condensing
Dimensions	3.3" x 0.98" x 0.5" (84 x 25 x 13 mm, excluded Antenna and cradle)
Weight	0.02 lbs. (10g, excluded Antenna and cradle)

## Chapter 2 Installation Guide

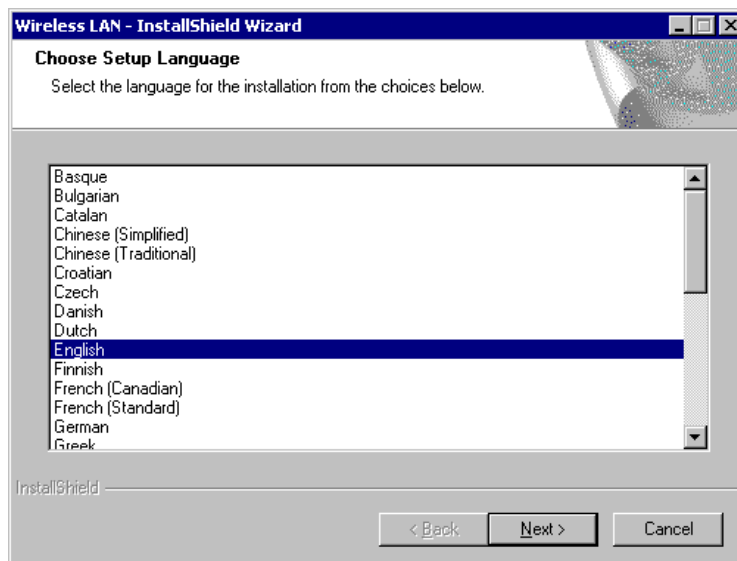
### 2.1 Software Installation

- Insert the Driver and Utility CD-ROM into the CD-ROM driver.
- The Wizard should run automatically, and below window should appear. If not, click the **Start** button and choose **Run**. In the field that appears, enter D:\autorun.exe (if "D" is the letter of your CD-ROM drive).



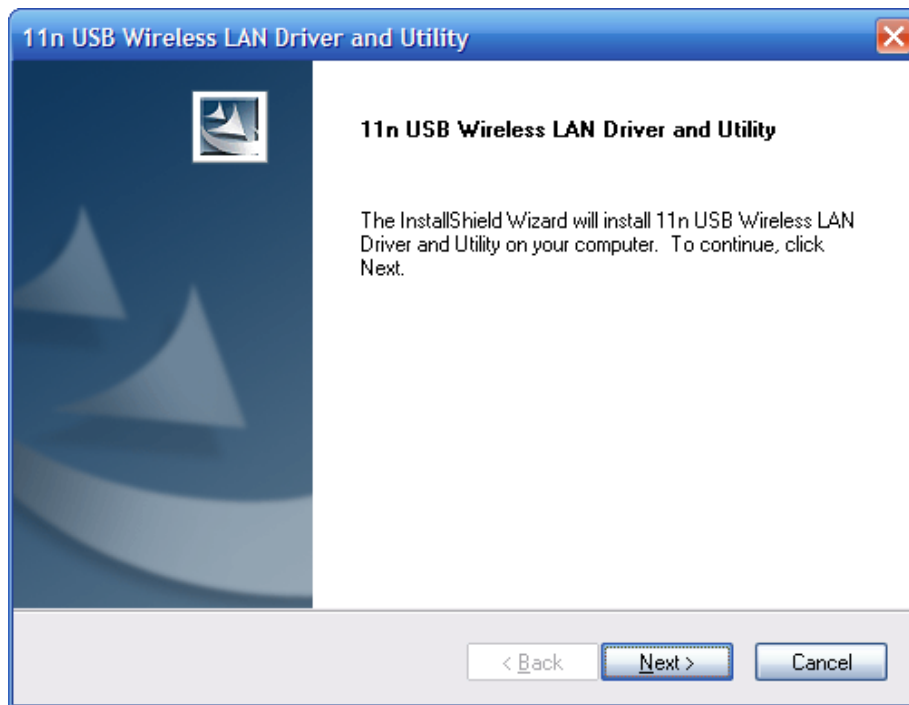
Next we use the USB wireless adapter installation steps as example. According to the PCI wireless adapter installation steps, you can complete PCI wireless adapter installing easily.

- Click **Install Driver & Utility for USB Wireless Adapter** on the Wireless Client Configuration Utility dialogue box, and then select the installing language from the next screen and click **Next** button.

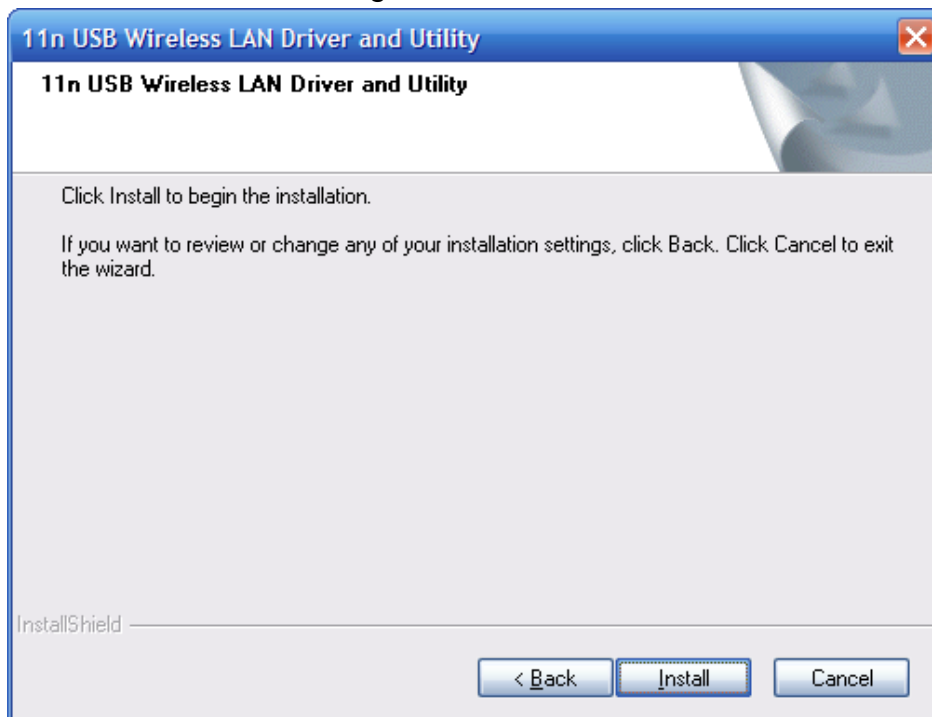




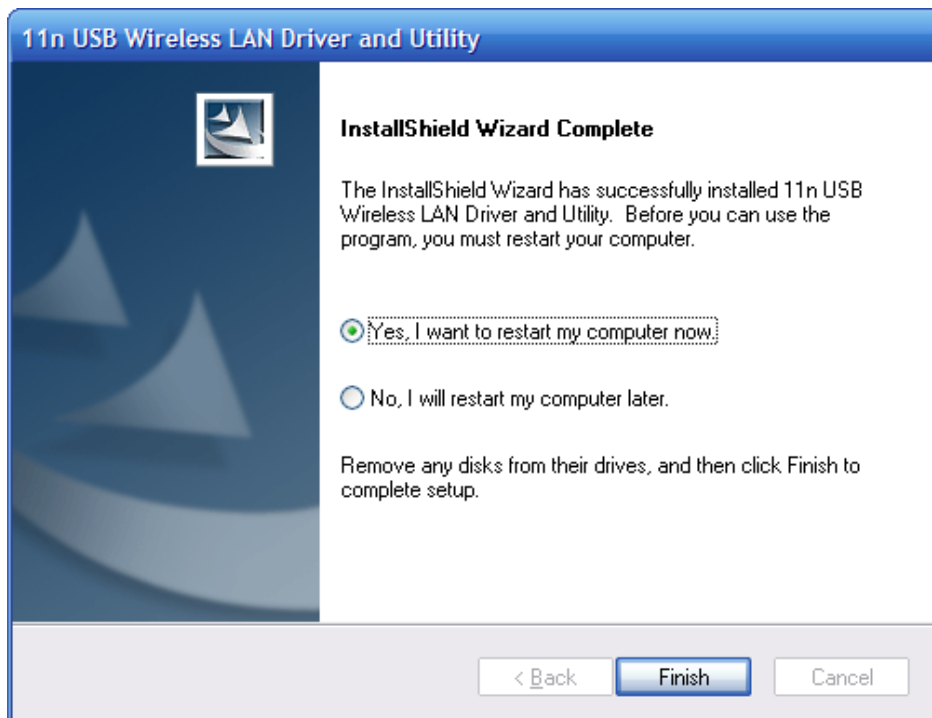
- Click **Next**



- Click **Install** to start installing



- Follow the InstallShield Wizard steps, and click **Finish** when done.



- Now your PC or notebook will restart automatically.

## Chapter 3 Wireless Connection Guide

This chapter describes how to configure your Adapter for wireless connectivity on your Wireless Local Area Network (WLAN) and use the data security encryption features.

After Installing the Adapter, the Adapter's tray icon will appear in your system tray. It appears at the bottom of the screen, and shows the signal strength using color and the received signal strength indication (RSSI).



- If the icon is purple, there is no connection.



- If the icon is white, the network is dropping off.



- If the icon is green, there is good signal strength.




- If the icon is green, there is excellent signal strength.

In the following instruction for making a network connection, we use the provided Utility to configure your wireless network settings.

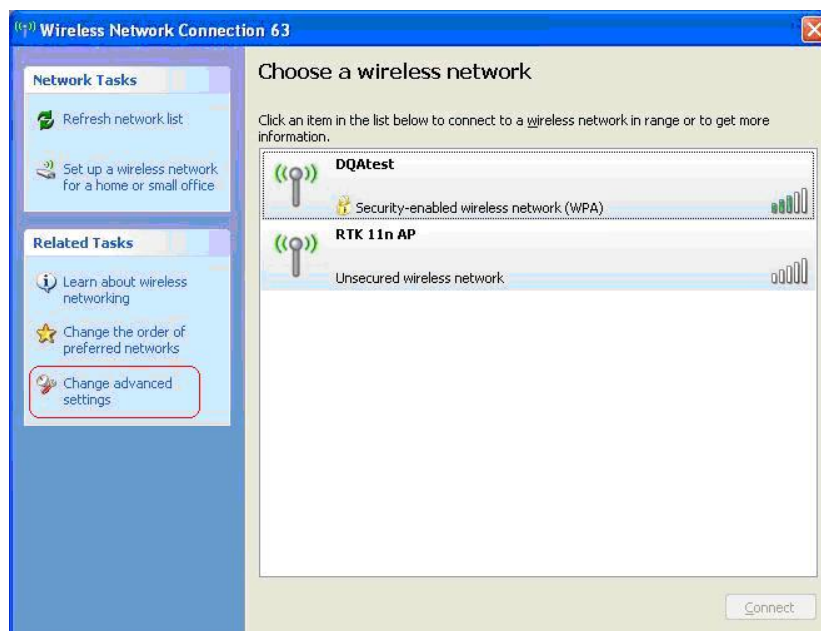
**Note:** You could use either the software we provide or Microsoft Zero Configuration tool to configure this adapter.

### 3.1. Connecting with Microsoft Zero Configuration tool (Win XP)

After specifying the Microsoft Zero Configuration tool to configure your wireless network, right click on the  icon on system tray. Select "View Available Wireless Networks" to specify your wireless network.



The tool shows the available wireless networks. Select your demanding network to connect with. To connect to a wireless network, please click **Change advanced settings** to be compatible with your wireless network settings.



### 3.2. Connecting with Window 7

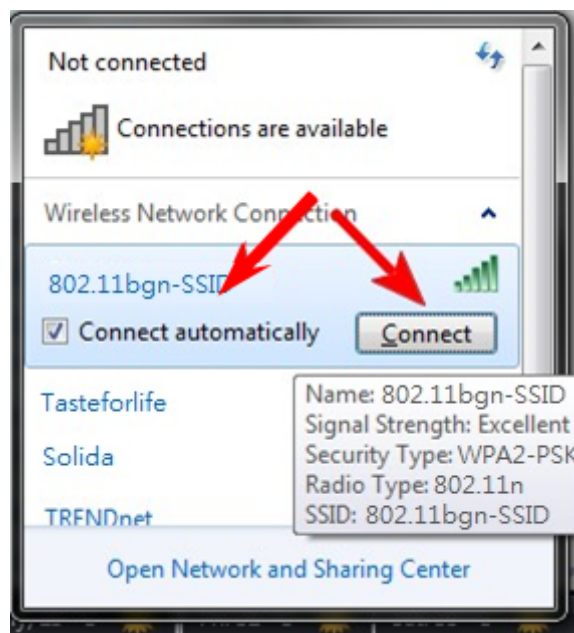
You can easily access to wireless with Win7. First, move your mouse to lower right hand corner as below and click on the icon where arrow pointing to.



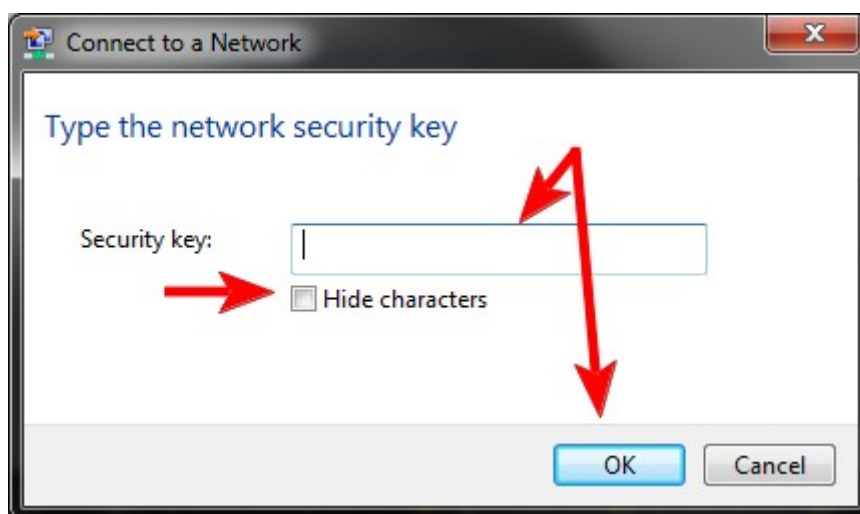
Click Refresh to get an update of your Wireless Network Connection. This should help you search the SSID of the network you want to connect to.



Select your desired SSID, then Click "Connect".



You will be prompted to ask you entering the network security key. Once entered, please click OK to complete.



You should see below in a very short period and find out whether you are connected or now.



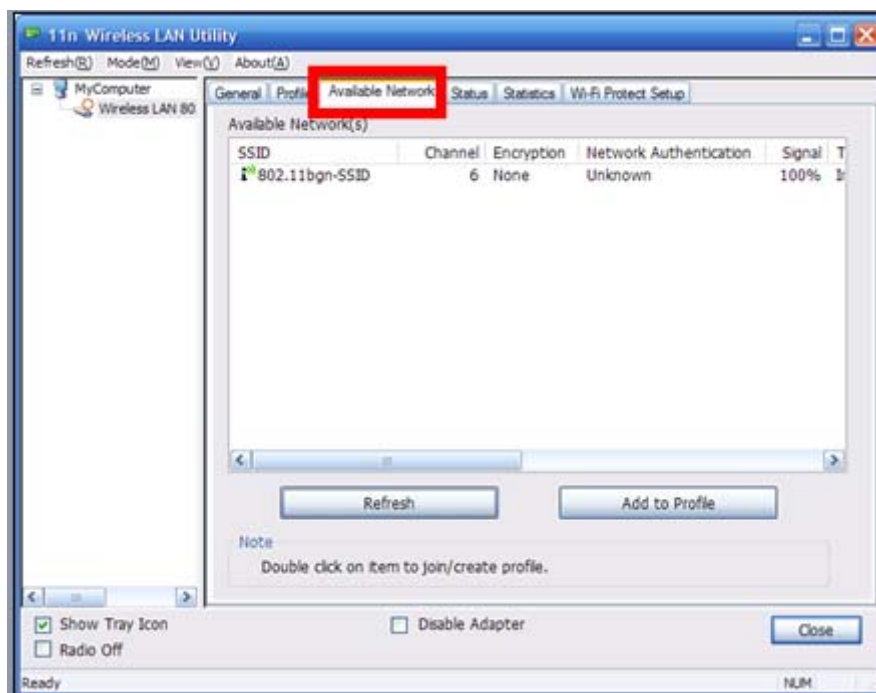
### 3.3. Connecting with Wireless LAN Utility

We provide this Utility for users to connect to a wireless network easily. It provides more information and configuration for this adapter. As default, the Utility is started

automatically upon starting your computer and connects to a connectable wireless network with best signal strength and with no security setting.

### 3.3.1 Step 1: Search Available Network

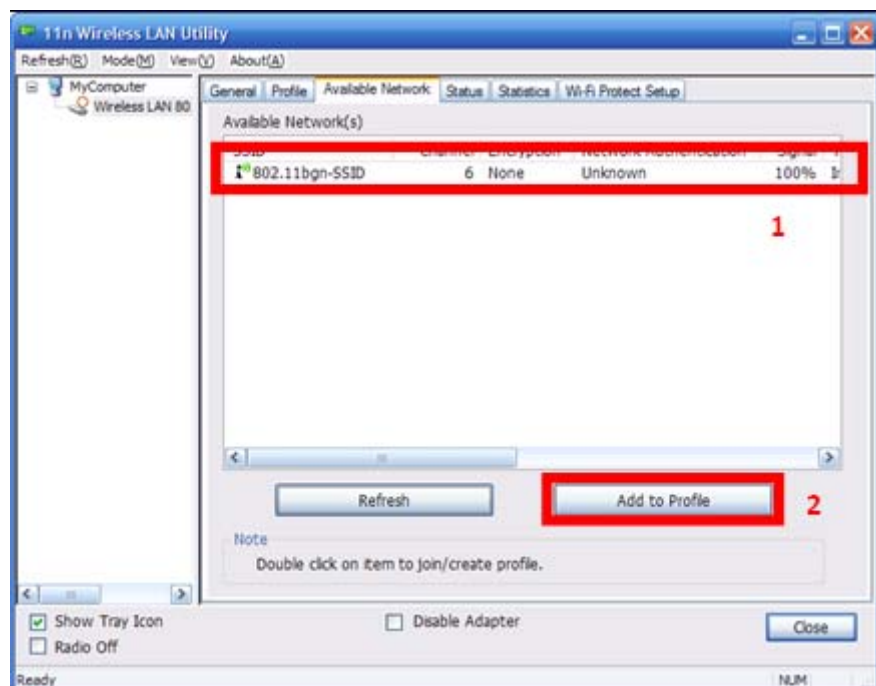
First Select the Available Network option:



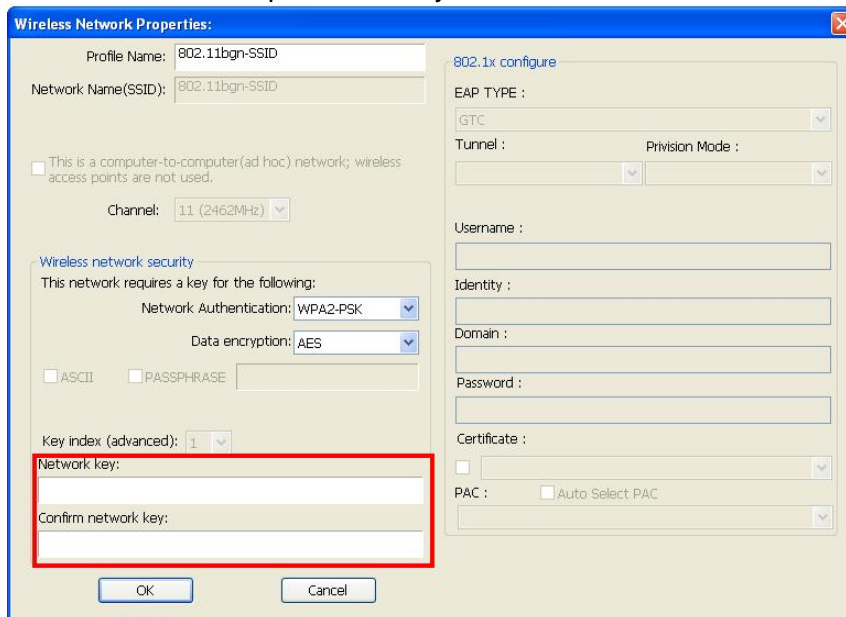
You will see a list of the SSID that your wireless adapter has scanned in your surrounding area. You can also "Refresh" to see the most updated list.

### 3.3.2 Step 2: Select and Add to Profile

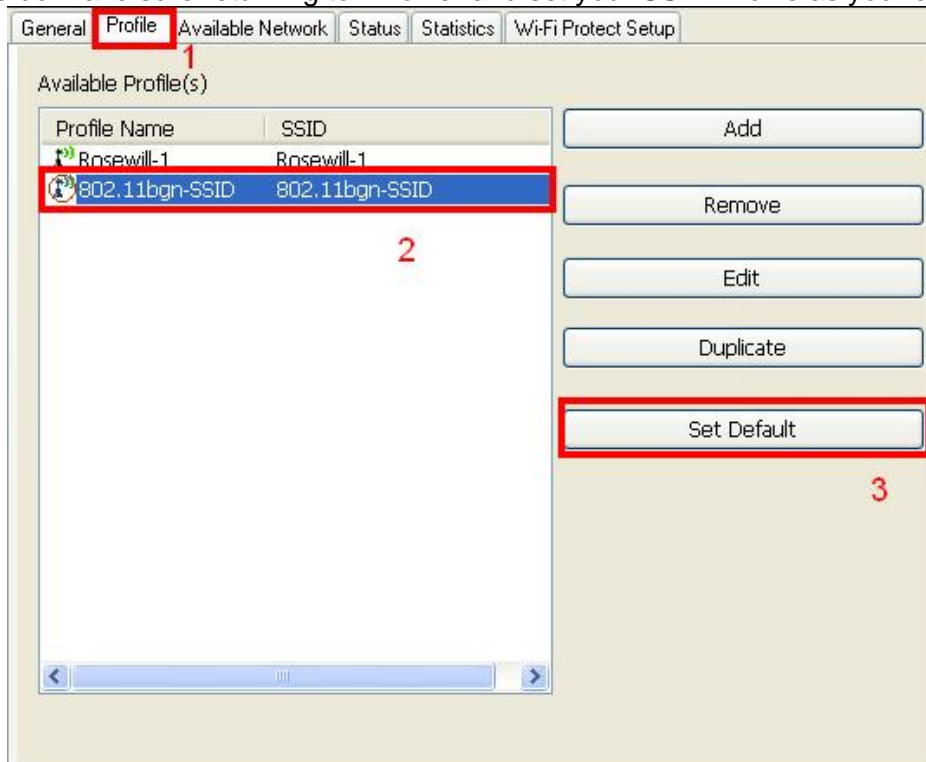
Select your desired SSID (the one you want to link with), then click Add to Profile.



After click “Add to Profile”, you will see the next window “Wireless Network Properties” popup with your current wireless signal’s setting. (RNX-N180PCe will detect the current setting of your SSID). So after the “Wireless Network Properties” popup, all you need to do is to enter the password of your SSID and click OK to continue.



When done, your wireless adapter will automatically connect to this SSID. However, Please do make sure returning to “Profile” and set your SSID Profile as your default.



So your utility will remember for the future to link to this SSID when computer is Power-On.

Now you have completed the setup of your wireless network. You should be ready to surf!

## Chapter 4 Utility Configuration – Win XP's Station Mode

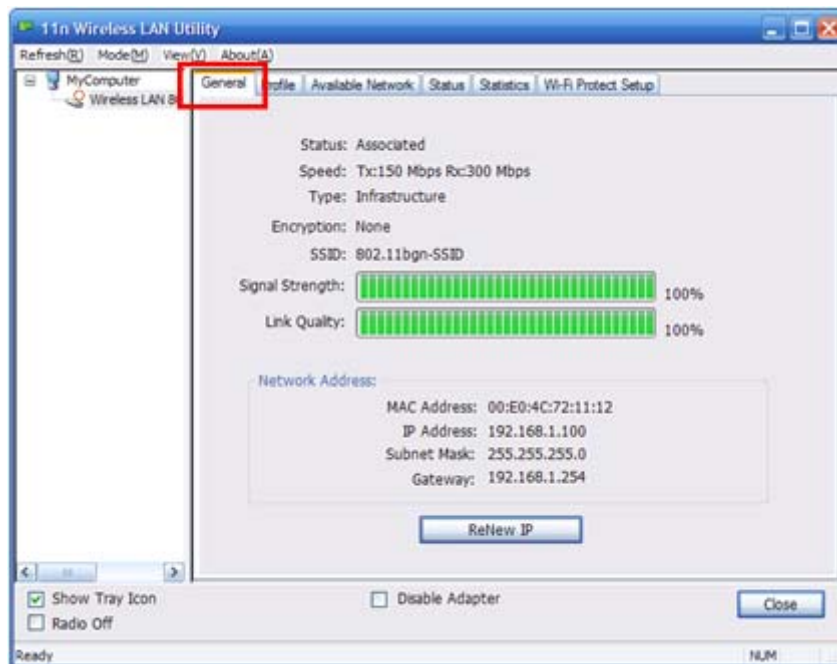
The Wireless Adapter provides two modes: **Station mode** and **Access Point mode**, the default is **Station mode** under Window XP.

You can select connect wirelessly to your Wireless router/AP to connect to Internet in station mode. But in the **Access Point mode**, the wireless adapter act as a wireless access point which can share Internet connection with others. (Access Point Mode requires Wired Connection)



### 4.1. General

The General tab displays current basic wireless connection information.



#### General Information

- Status: Wireless network Associated, Ad-hoc Mode or Not Associated.
- Speed: The data Tx rate and Rx rate of the current connection.
- Type: The type of the current wireless connection , Infrastructures or ad hoc
- Encryption: Current encryption.
- SSID: The unique name of the wireless network to which the wireless adapter is connecting.
- Signal Strength: The signal quality of the current connection.
- Link Quality: The link quality of the current wireless connection.



## Network Address

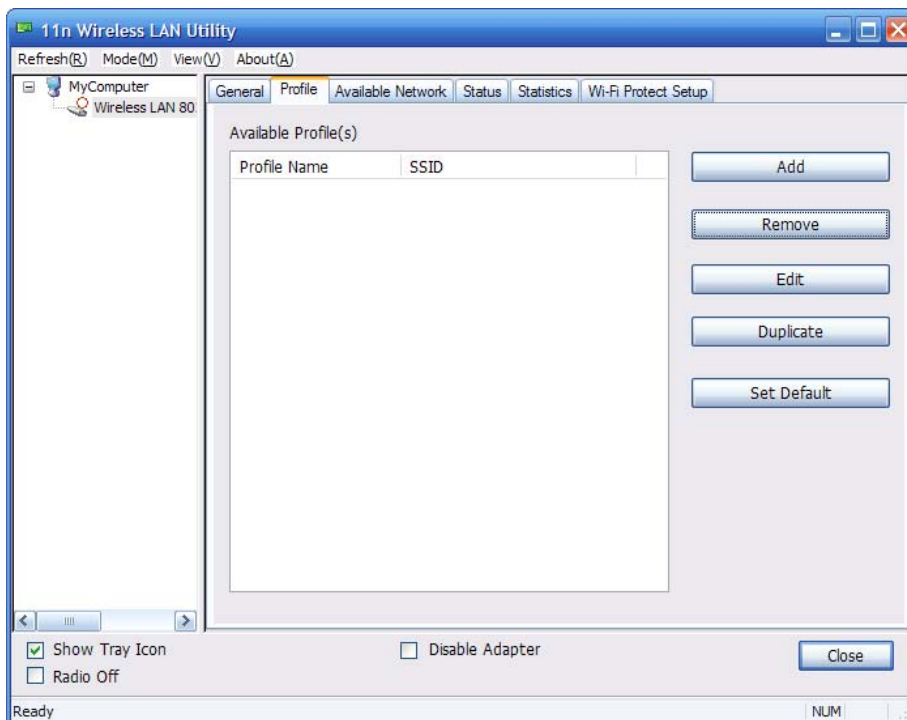
- MAC Address: The MAC Address of the Adapter.
- IP Address: The IP Address of the Adapter.
- Subnet Mask: The Subnet Mask of the Adapter.
- Default Gateway: The Default Gateway address of the Adapter.

## Others

- Show Tray Icon: Show USB Wireless LAN Utility icon in the windows taskbar notification area.
- Disable Adapter: Disable the wireless adapter.
- Radio off: Turn off the radio of the wireless adapter.

## 4.2. Profile

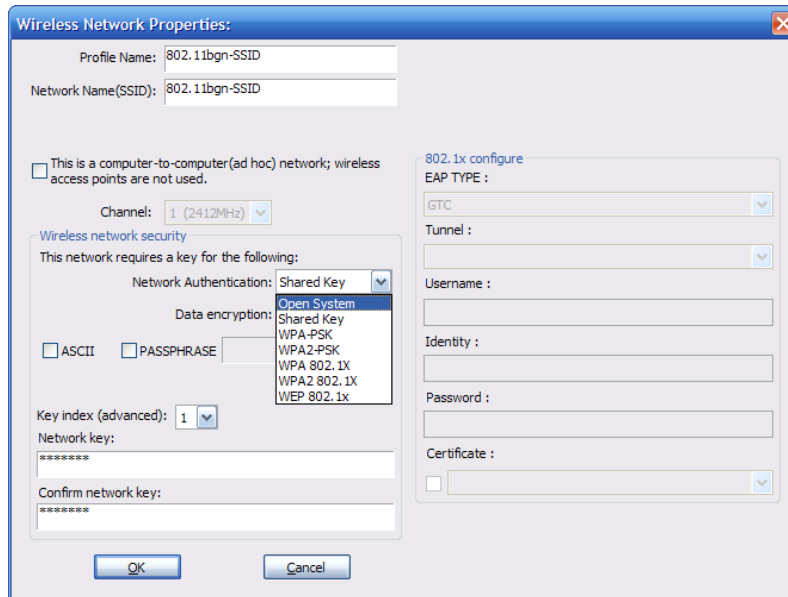
Using the Profile tab, you can add, remove, edit, duplicate, and set default a profile.



### 4.2.1 Add

- **Create a new Infrastructure mode profile**

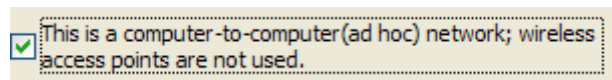
If you want your wireless computers to communicate with other computers on your wired network via a wireless access point. Click the **Add** button to create a new infrastructure profile.



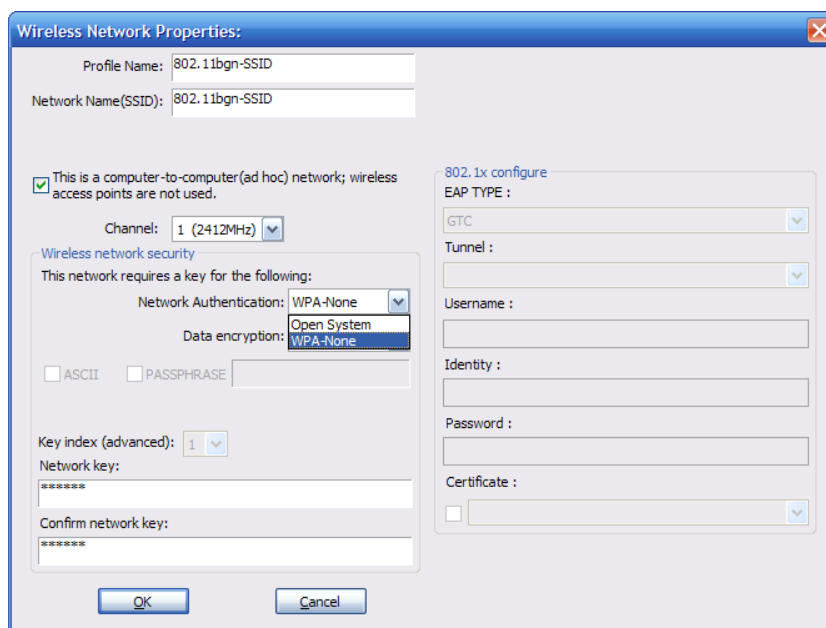
When the Network Info dialog box appears, enter a name for the new profile. Enter the Network SSID. Choose the Network Authentication Mode and Data encryption from the drop-down menu and import the network key. Then click OK button.

- **Create a new ad-hoc mode profile**

If you want your wireless computers communicate with each other directly, click the **Add** button to create a new ad-hoc profile. Then, check on below option:



then select the correct operating channel for your network from the Channel drop-down menu.

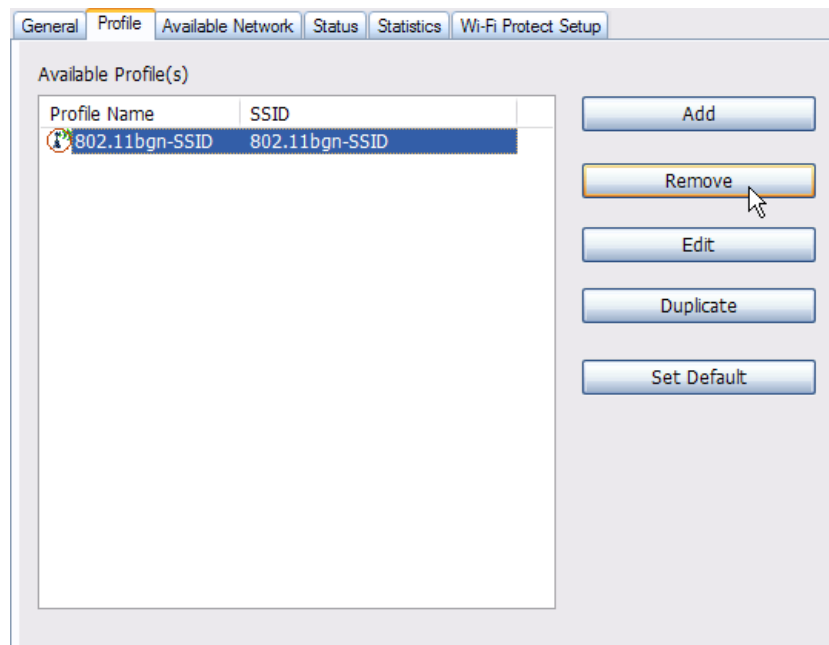


Choose the Network Authentication Mode and Data encryption from the drop-down

menu. And import the network key. Then click OK button. **You have successfully created a profile.**

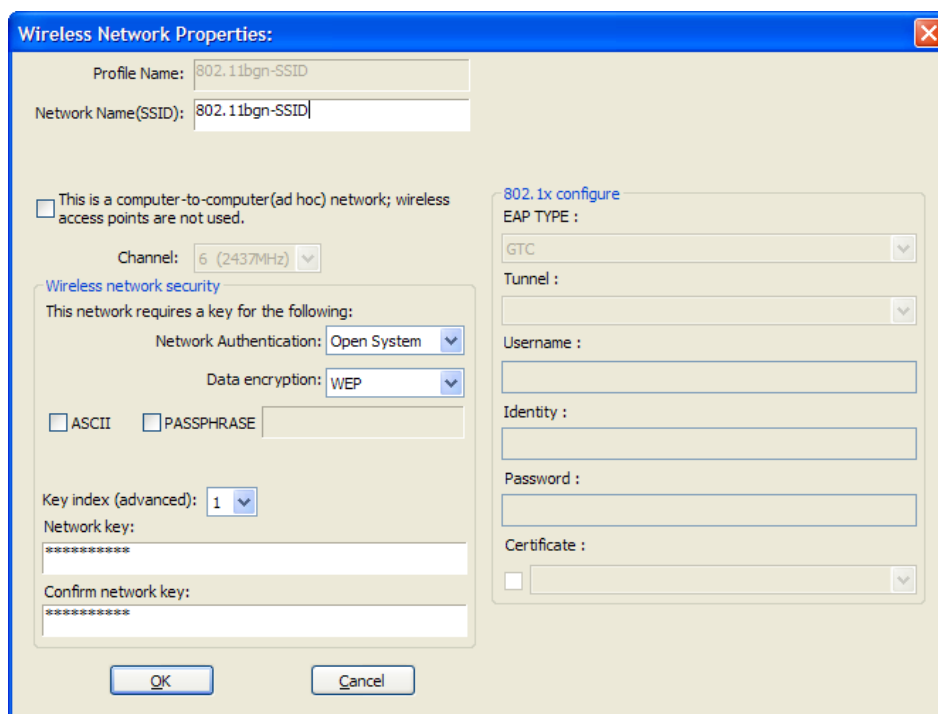
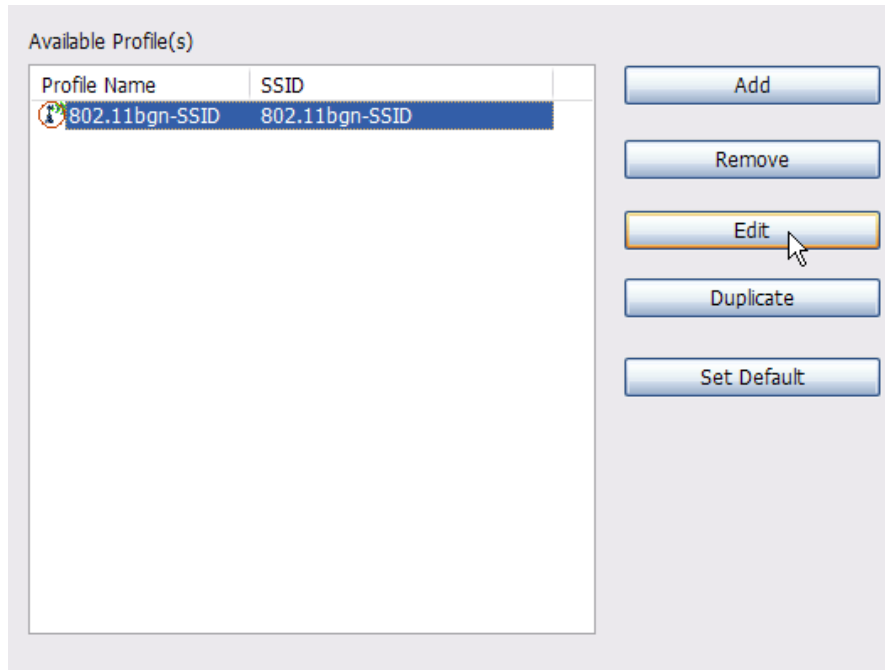
#### 4.2.2 Remove

Select a profile and click **Remove** button to delete this profile.



#### 4.2.3 Edit

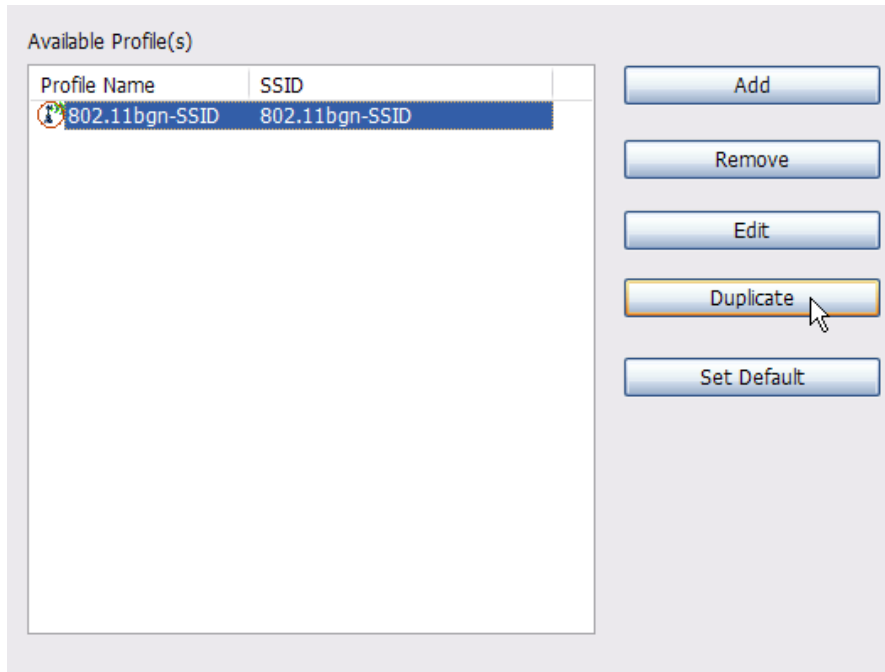
Select a profile and click **Edit** button to edit this profile.



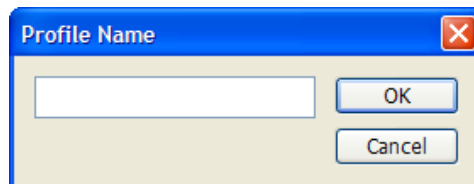
Modify the profile information according to your demand.

#### 4.2.4 Duplicate

Select a profile which you want to copy and then click **Duplicate**

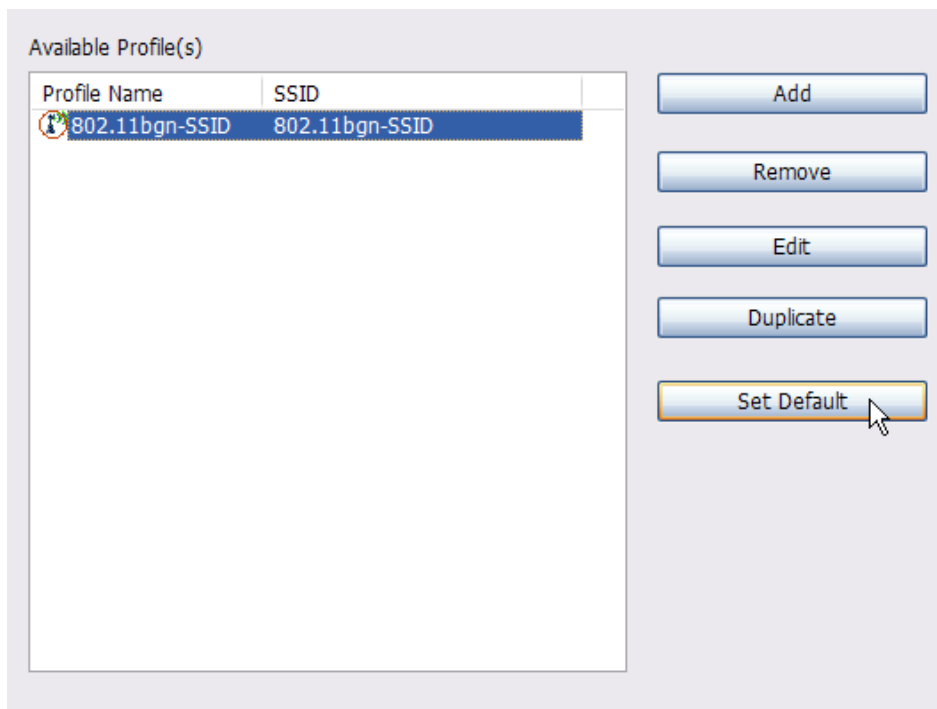


Import the new profile name in the popup window blank



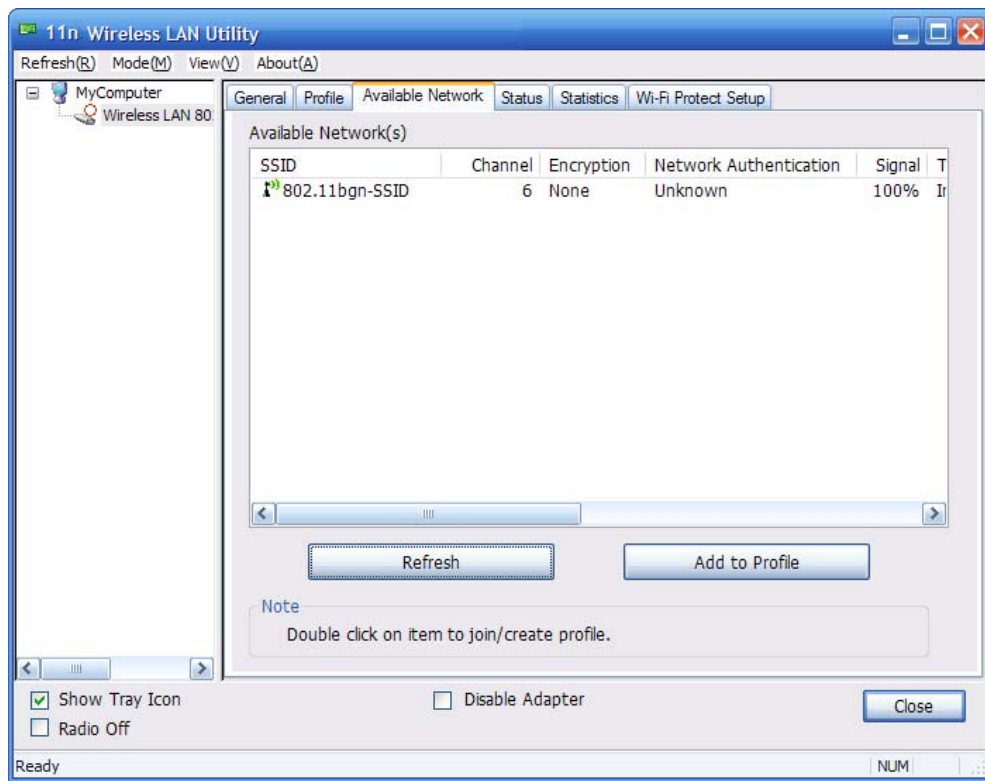
#### 4.2.5 Set default

When you want to make one profile as a default wireless connection, you should select the profile and click **Set default** button. The wireless adapter will use this profile to connect to wireless network automatically when the utility running next time.

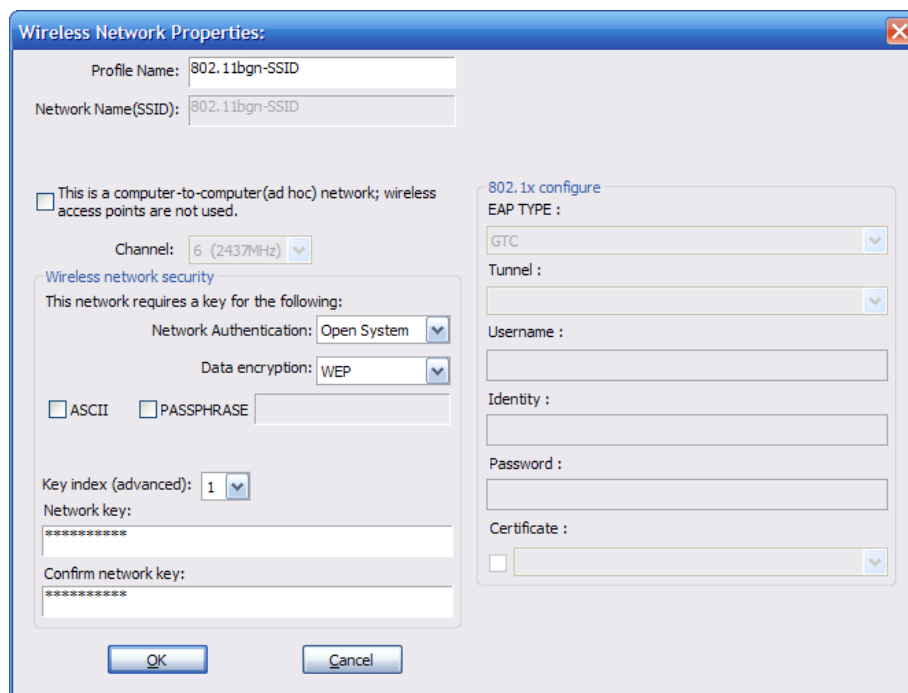


### 4.3. Available Network

The Available Network tab displays a list of infrastructure and ad-hoc networks for available wireless connection



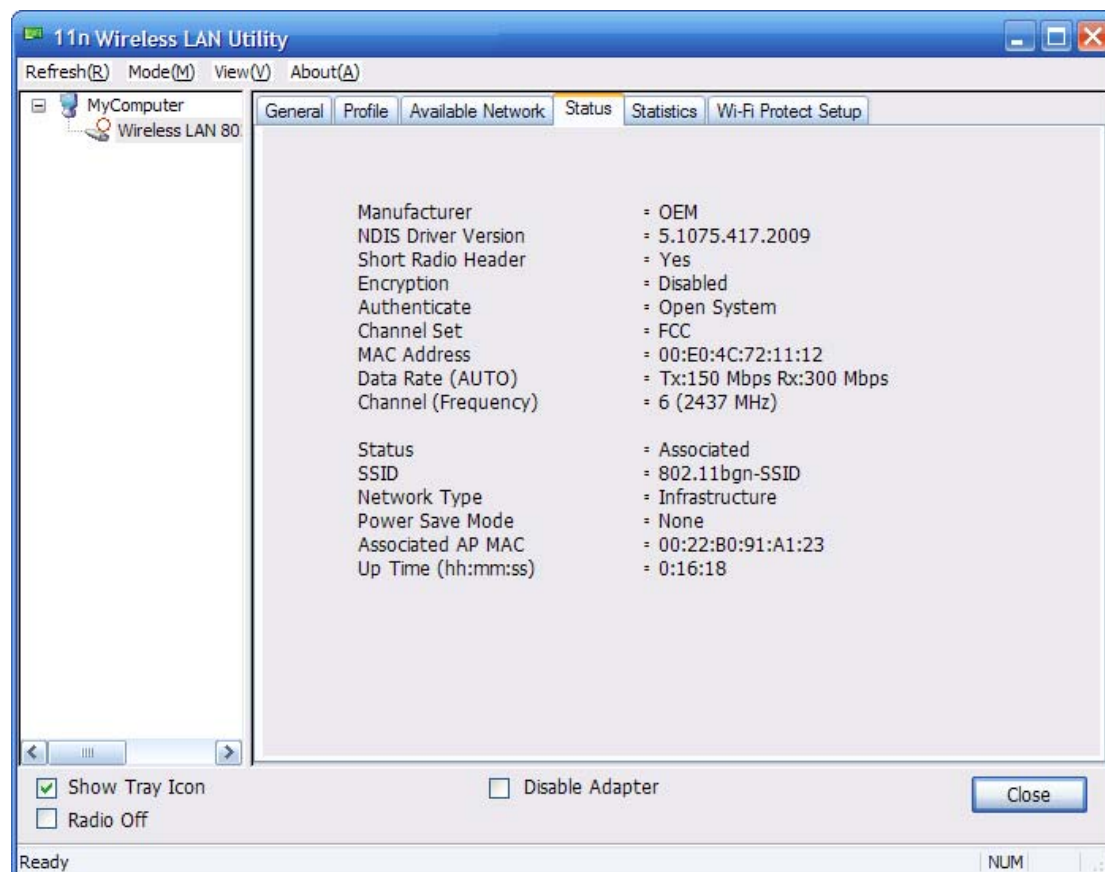
Double-click the network to which you wish to connect.



Choose the Authorization modes and Encryption modes in the drop-down box. If the wireless network uses a Passphrase, enter the Passphrase in the Passphrase field. If the wireless network uses a WEP key, enter the WEP key in the Key field. Click the **OK** button to complete the network connection.

## 4.4. Status

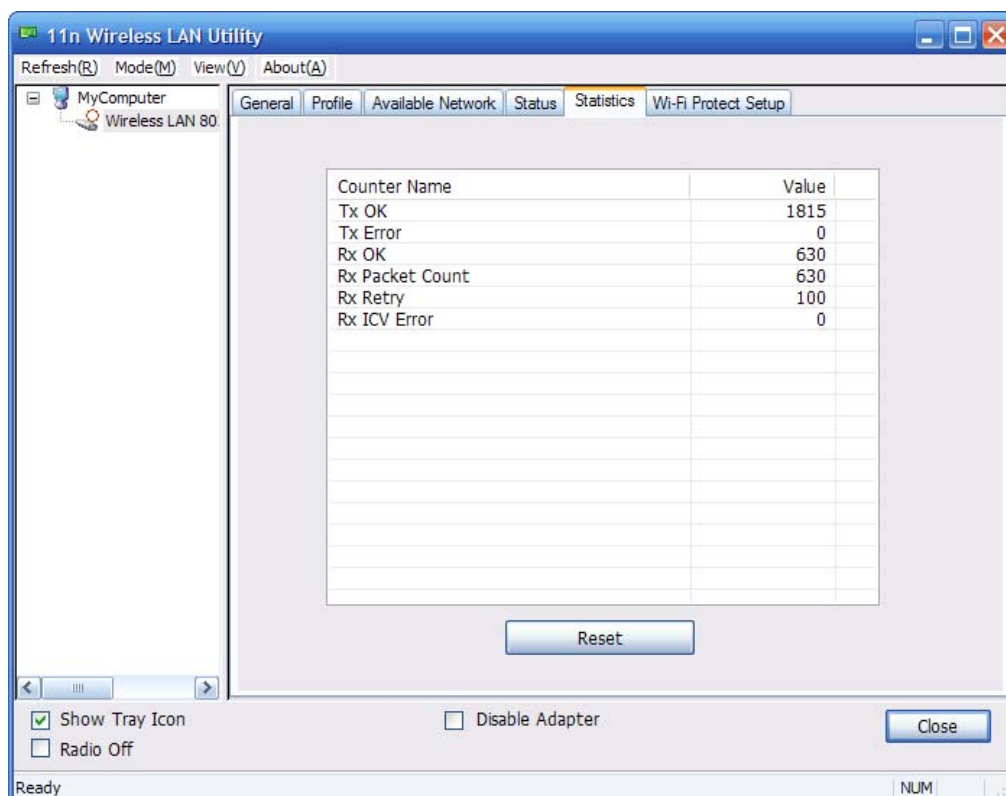
The Status tab displays the detailed information of current device and wireless connection.



## 4.5. Statistics

The Statistics tab display the stat. value of current wireless connection Tx and Rx, you can click **Reset** button to reset value and restart to count.





## 4.6. Wi-Fi Protect Setup



### 4.6.1 Method 1 PIN Input Config (PIN)

1. Input the wireless NIC's PIN Code into AP and click **Start PIN** on the AP-Router

WPS config page

## Wi-Fi Protected Setup

This page allows you to change the setting for WPS (Wi-Fi Protected Setup). Using this feature could let your wireless client automatically synchronize its setting and connect to the Access Point in a minute without any hassle.

**Disable WPS**

**WPS Status:**  Configured  UnConfigured

Reset to UnConfigured

**Self-PIN Number:** 68906818

**Push Button  
Configuration:**

Start PBC

Apply Changes

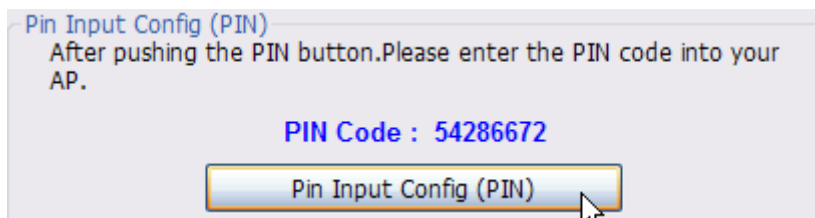
Reset

**Client PIN Number:**

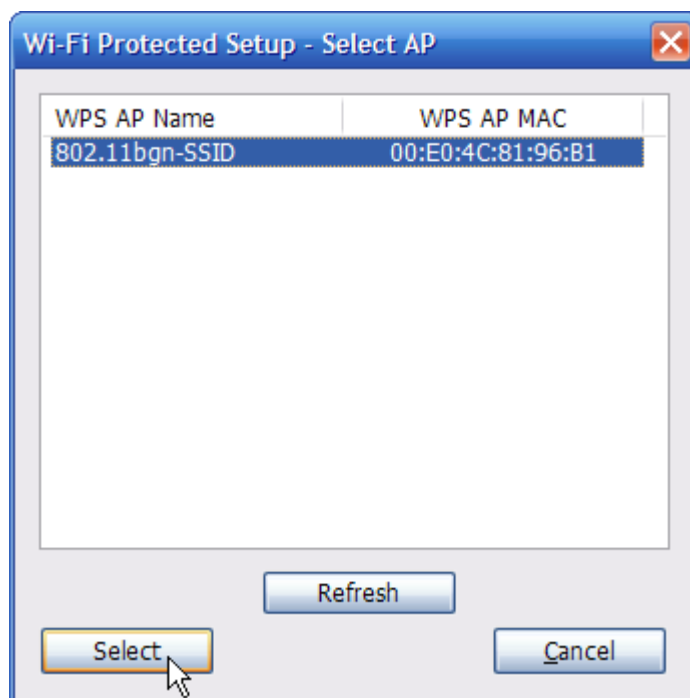
54286672

Start PIN

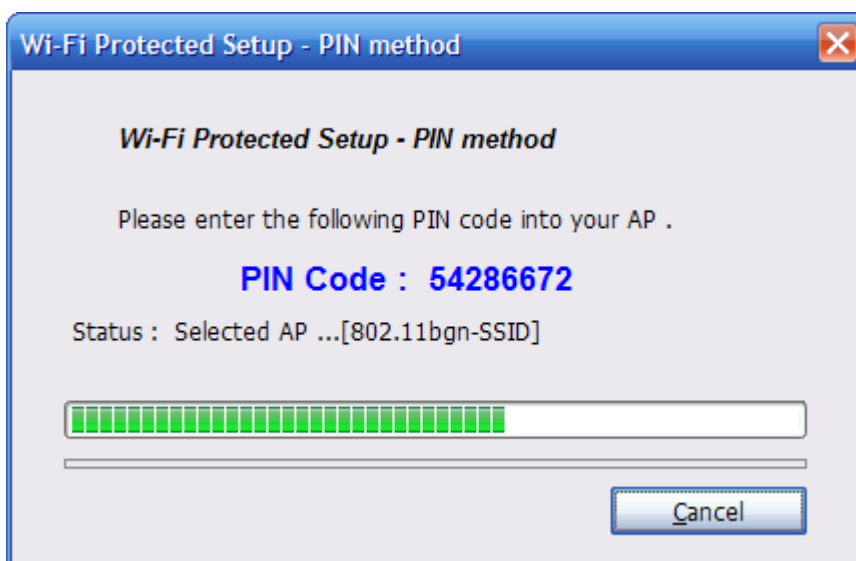
2. Click **Pin Input Config(PIN)**



3. Select one WPS AP which you want connect to and click **Select** button

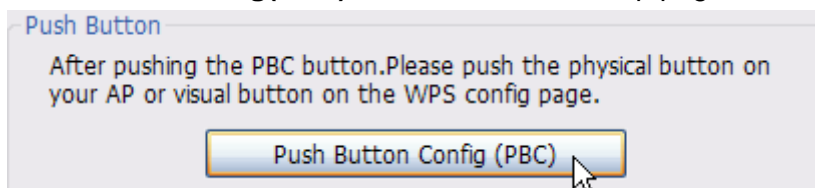


4. Please wait when the PIN Method Window pop-up appear, the secure connection between AP and wireless NIC will be founded automatically.



#### 4.6.2 Method 2 Push Button

1. Click **Push Button Config(PBC)** on Wi-Fi Protect Setup page



2. Click **Start PBC** on the AP-Router WPS config page

## Wi-Fi Protected Setup

This page allows you to change the setting for WPS (Wi-Fi Protected Setup). Using this feature could let your wireless client automatically synchronize its setting and connect to the Access Point in a minute without any hassle.

**Disable WPS**

**WPS Status:**  Configured  UnConfigured

Reset to UnConfigured

**Self-PIN Number:** 68906818

**Push Button Configuration:**

Start PBC

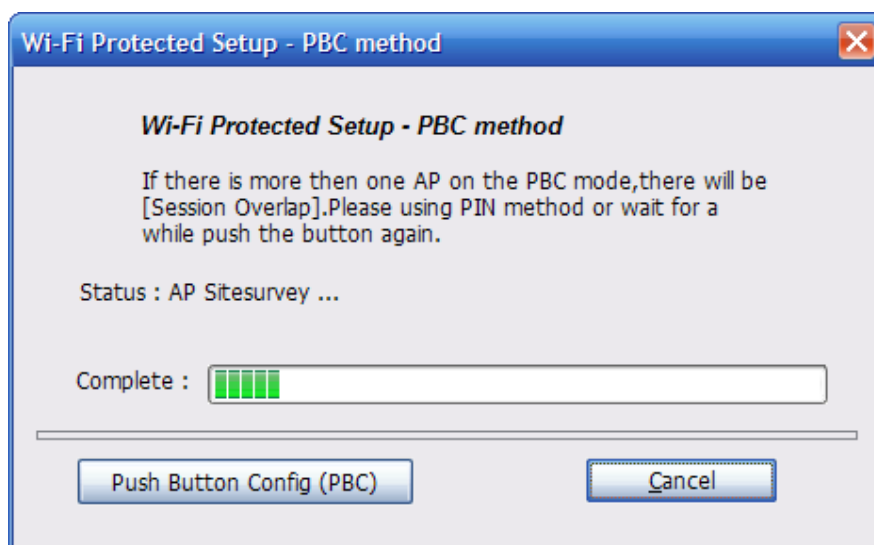
Apply Changes

Reset

**Client PIN Number:**

Start PIN

- Please wait when the PBC method window pop-up appear, the secure connection between AP and wireless NIC will be founded automatically.



### Remark

If there is more than one AP on the PBC mode, there will be session overlap. Please using method 1 PIN Input Config(PIN) or wait for a while push the button again.

# FAQ

This chapter provides solutions to problems that may occur during the installation and operation of the Wireless USB Adapter. Read the descriptions below to solve your problems.

## 1. The Wireless USB Adapter does not work properly.

Reinsert the Wireless USB Adapter into your PC's USB slot. Right click My Computer and select Properties. Select the device manager and click on the Network Adapter. You will find the Adapter if it is installed successfully. If you see the yellow exclamation mark, the resources are conflicting. You will see the status of the Adapter. If there is a yellow question mark, please check the following:

Make sure that you have inserted the right adapter and installed the proper driver. If the Adapter does not function after attempting the above steps, remove the adapter and do the following:

Uninstall the driver software from your PC through Control Panel's **"Add or Remove Programs"**.

Restart your PC and repeat the hardware and software installation as specified in this User Guide.

## 2. I cannot communicate with the other computers linked via Ethernet in the Infrastructure configuration.

Make sure that the PC to which the Adapter is associated is powered on.

Make sure that your Adapter is configured on the same channel and with the same security options as with the other computers in the Infrastructure configuration.

## 3. What should I do when the computer with the Adapter installed is unable to connect to the wireless network and/or the Internet?

Check that the LED indicators for the broadband modem are indicating normal activity. If not, there may be a problem with the broadband connection.

Check that the LED indicators on the wireless router are functioning properly. If not, check that the AC power and Ethernet cables are firmly connected.

Check that the IP address, subnet mask, gateway, and DNS settings are correctly entered for the network.

In Infrastructure mode, make sure the same Service Set Identifier (SSID) is specified on the settings for the wireless clients and access points.

In Ad-Hoc mode, both wireless clients will need to have the same SSID. Please note that it might be necessary to set up one client to establish a BSS (Basic Service Set) and wait briefly before setting up other clients. This prevents several

clients from trying to establish a BSS at the same time, which can result in multiple singular BSSs being established, rather than a single BSS with multiple clients associated to it.

Check that the Network Connection for the wireless client is configured properly. If Security is enabled, make sure that the correct encryption keys are entered on both the Adapter and the access point.

Thank you for purchasing a quality Rosewill Product.

Please register your product at : [www.rosewill.com](http://www.rosewill.com) for complete warranty information and future support for your product.

## Free Manuals Download Website

<http://myh66.com>

<http://usermanuals.us>

<http://www.somanuals.com>

<http://www.4manuals.cc>

<http://www.manual-lib.com>

<http://www.404manual.com>

<http://www.luxmanual.com>

<http://aubethermostatmanual.com>

Golf course search by state

<http://golfingnear.com>

Email search by domain

<http://emailbydomain.com>

Auto manuals search

<http://auto.somanuals.com>

TV manuals search

<http://tv.somanuals.com>