



Wireless N Adapter
 RNWD-N1501UB/RNWD-N1502UBE
Quick Installation Guide

1. Overview

Thank you for choosing Rosewill's 802.11n Wireless USB adapter – RNWD-N1501UB / RNWD-N1502UBE. This chapter is to introduce you more about this Wireless Adapter.

1.1 Package Content

Before getting started, please verify that your package includes the following items:

- Rosewill RNWD-N1501UB / RNWD-N1502UBE 802.11n Wireless USB Adapter x 1
- Resource CD x 1, including:
 - Wireless Utility and Driver
 - User Manual
 - Quick Installation Guide

Note:

Make sure that the package contains the above items. If any of the listed items are damaged or missing, please contact with your distributor.

1.2 Product Specification

Chipset	Ralink RT5370
Standard	IEEE 802.11b/g/n
Bus Type	USB 2.0/1.1 Interface
Frequency Band	2.4GHz ISM (Industrial Scientific Medical Band)
Data Rate	11b: 1/2/5.5/11Mbps; 11g: 6/9/12/24/36/48/54Mbps 11n: up to 150Mbps
Output Power	11n: 14dBm+/-1.5dBm 11g: 14dBm+/-1.5dBm 11b: 16dBm+/-1.5dBm
Security	WEP 64/128, WPA, WPA-PSK, WPA2, WPA2-PSK, TKIP/AES
OS support	Windows 2K/XP/Vista/7 (32/64bit); Linux Kernel 2.4 and 2.6 series; Mac OS 10.5/10.6/10.7
Temperature	Operating: 32 ~ 104°F (0~40°C); Storage: -4 ~ 167°F (-20~75°C)
Humidity	Operating: 10% ~ 90% (Non-Condensing); Storage: 5% ~ 95% (Non-Condensing)

1.3 System Requirement

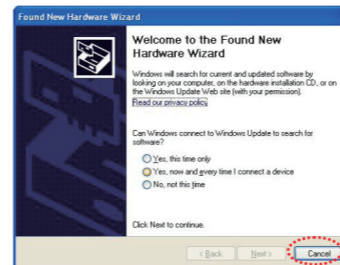
You must have at least the following

- A laptop computer/desktop PC with an available USB port
- At least a 300MHz processor and 32MB of memory
- Windows OS for Win2000, XP, Vista, 7; Mac OS X 10.5~10.6; or Linux OS under Kernel 2.4 and 2.6 series
- A CD-ROM Drive
- USB controller properly installed and working in the computer
- A 802.11n - 802.11g or 802.11b Wireless (and) Access Point/Router (for infrastructure Mode) or another 802.11n - 802.11g or 802.11b wireless (and) adapter (for Ad-Hoc; Peer-to-Peer networking mode).

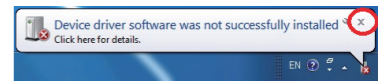
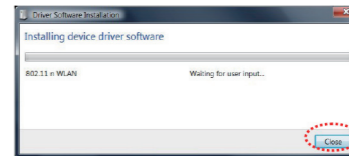
2. Installation Guide

2.1 Hardware Installation

- Please first connect the RNWD-N1501UB / RNWD-N1502UBE with the USB cable, then insert into the USB slot of your PC or NB.
- If the following window popup, please click Cancel or Close:
 - Under Win XP

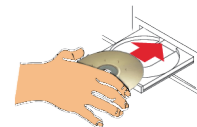


- Under Windows Vista/Win7

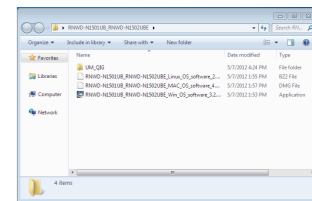


2.2 Installing Drivers and/or Utility

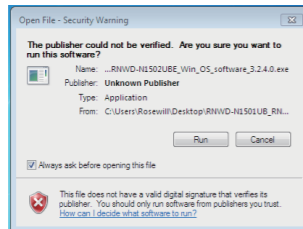
- Please insert the CD into your CD-rom drive



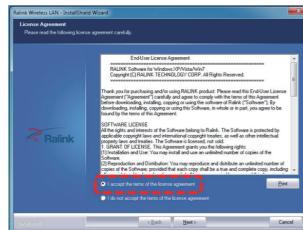
- Click on the Driver for Windows OS in the CD to install driver and utility for Windows



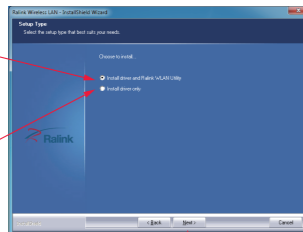
- ▶ Click **Run** if the following window popup



- ▶ Upon Clicking **Yes**, you should see a "**License Agreement**" window popup. Please select "**I accept the terms of the license agreement**" then click "**Next>**"



- ▶ On the next window, you will have the option of "**Install driver and Ralink WLAN Utility**" or "**Install Driver only**"

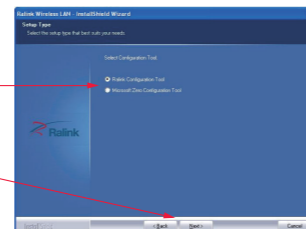


1. Win7 users are recommended to select "**Install Driver only**"
2. For other Windows OS customer, please feel free to select "**Install driver and Ralink WLAN Utility**"

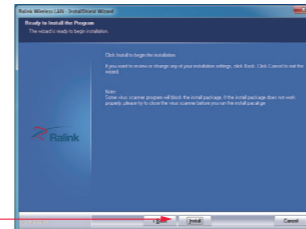
Please select "**Next >**" after your selection to continue the installation process.

- ▶ When Install under **Window XP**, you may see this selection window, you can select among "**Ralink Configuration Tool**" or "**Microsoft Zero Configuration Tool**"

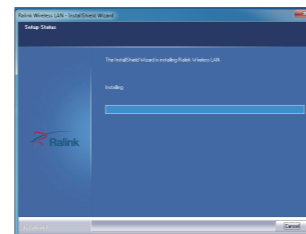
Once select, please click "**Next >**" to continue.



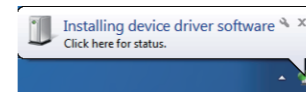
- ▶ Please select "**Install**" to continue.



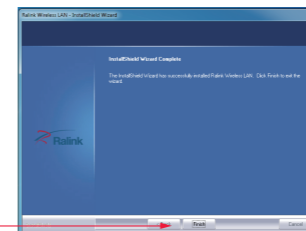
- ▶ Setup wizard will process.



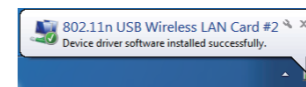
- ▶ During the Installation process, you may see this popup on your lower right hand corner showing you the installation status.



- ▶ Click "**Finish**" to complete the installation process

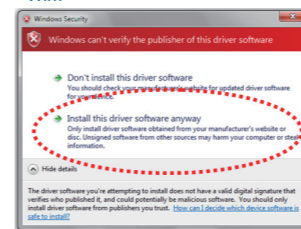


- ▶ When complete, this window at the lower right hand corner will pop up, thus complete the driver installation.

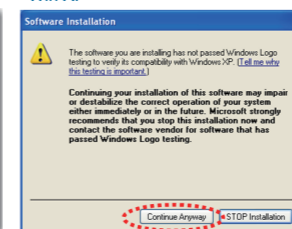


If you see below window popup, please select install this driver software anyway.

Win7



Win XP



Thank you for purchasing a quality Rosewill Product.
Please register your product at: www.rosewill.com for complete warranty information and future support for your product.

Free Manuals Download Website

<http://myh66.com>

<http://usermanuals.us>

<http://www.somanuals.com>

<http://www.4manuals.cc>

<http://www.manual-lib.com>

<http://www.404manual.com>

<http://www.luxmanual.com>

<http://aubethermostatmanual.com>

Golf course search by state

<http://golfingnear.com>

Email search by domain

<http://emailbydomain.com>

Auto manuals search

<http://auto.somanuals.com>

TV manuals search

<http://tv.somanuals.com>