

Installation

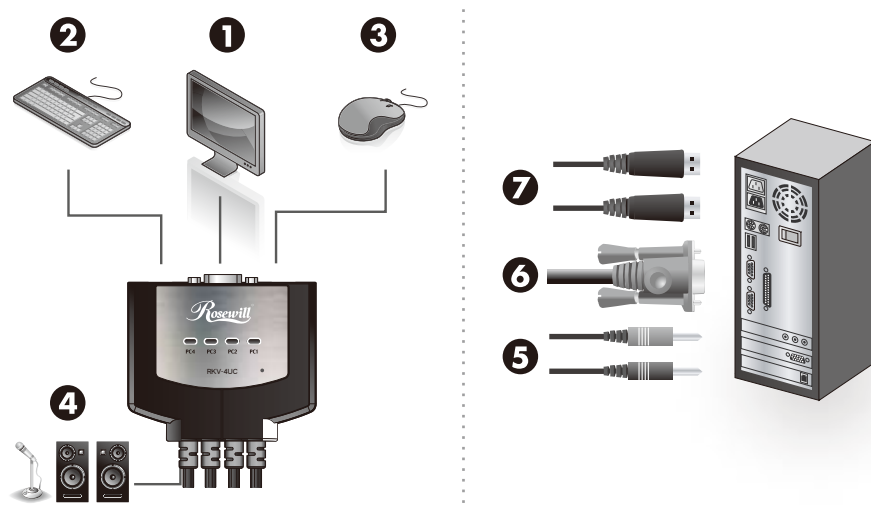
Before beginning, please turn off the computers you are connecting to the KVM

NOTE:

To prevent damage to your equipment due to static electric discharge, please make sure that all devices on the installation are properly grounded.

Refer to the illustrations below while completing the following steps

1. Connect your monitor to the VGA port on the RKV-4UC
2. Connect your USB keyboard to the keyboard port on the RKV-4UC
3. Connect your USB mouse to the mouse port on the RKV-4UC
4. Connect your Speaker & Microphone to RKV-4UC
5. Connect KVM's Audio cable into the audio port on one of your computers
6. Connect the KVM's VGA cable to the VGA port on the same computer
7. Connect 2 USB connectors on the same cable to the same computer
8. Repeat step 5-7 on the other computer
9. Boot all computers
10. Tap the button to switch between computers



Thank you for purchasing a High-Quality Rosewill Product.

Please register your product at : www.rosewill.com for complete warranty information and future support for your product.

If you have any question while using our products, please visit our website : www.rosewill.com

Download from www.Somanuals.com. All Manuals Search And Download.

Free Manuals Download Website

<http://myh66.com>

<http://usermanuals.us>

<http://www.somanuals.com>

<http://www.4manuals.cc>

<http://www.manual-lib.com>

<http://www.404manual.com>

<http://www.luxmanual.com>

<http://aubethermostatmanual.com>

Golf course search by state

<http://golfingnear.com>

Email search by domain

<http://emailbydomain.com>

Auto manuals search

<http://auto.somanuals.com>

TV manuals search

<http://tv.somanuals.com>