

Quick Guide To Using SVR-3200/1680C/1660C/1645

PRIOR TO USING THE PRODUCT

This is a quick guide covering some of the more frequently used features only. For more accurate and detailed information about the product, please refer to the User's Manual.

BUTTONS

- | | | | | |
|-------------------|-----------------|------------------|-----------------|----------------|
| ① DVD | ② Jog/Shuttle | ③ Select Channel | ④ Auto Sequence | ⑤ Multi Screen |
| ⑥ Menu | ⑦ Search | ⑧ Save | | |
| ⑨ UP/PAUSE | ⑩ Power | ⑪ USB | | |
| ⑫ PTZ | ⑬ Monitor(SPOT) | | | |
| ⑭ Select Function | ⑮ COPY | ⑯ ESC | | |
| ⑰ LEFT/REW | ⑱ DOWN/STOP | ⑲ RIGHT/FWD | | |
| ⑳ ENTER/PLAY | | | | |



USING JOG/SHUTTLE

- Shuttle**
Use it to control playback direction (forward/reverse) or speed (X2, X4, X8, X16, X32, X64).
- Jog Dial**
Use it for frame-by-frame search of video recordings.
※ SVR-3200/1680/1660/1645

PRODUCT FEATURES

1. Live Monitoring



Multi Screen
With each pressing of the Multi Screen button, the screen splits into 4, 9, 10 or 16 screens respectively.



Single Screen
Press a channel button to see the respective channel only on the screen.

2. Recording



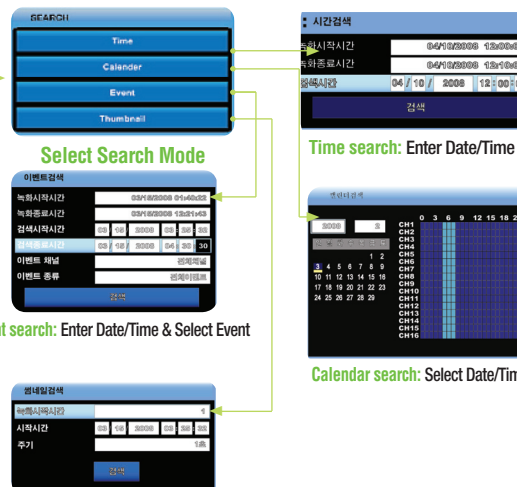
Press the REC button to start or stop recording. REC lamp located on the top of the REC button will display recording status.

(Caution: the REC button function interacts with the Scheduled Recording settings.)

3. Search/Playback Recordings



Search button



1. Press the Search button
2. Select either the Time, calendar, Event or thumbnail search
3. Enter Date/Time or select an calendar/date/time
4. Select the Search Button

4. Playback Buttons

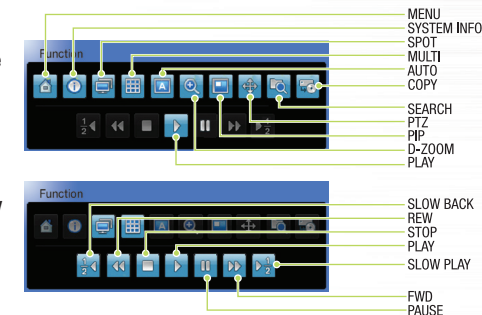


- PAUSE: Pause playback
- REW: Rewind playback & Rewind speed (X1/2, X1, X2, X4, X8, X16, X32, X64)
- PLAY: Start playback
- FWD: Forward playback & Forward speed (X1/2, X1, X2, X4, X8, X16, X32, X64)
- STOP: Stop playback

5. Hot Function(Hot Key) Menu

Press the Function button (FUNC) or right-click the mouse to use Hot Function icons.

- Function Key on Live Mode
- Function Key on Play Mode



Quick Guide To Using SVR-3200/1680C/1660C/1645

RECORDING FUNCTION

SAMSUNG DVR provides several different recording methods. You can easily select and set any recording method that is most suitable for your environment or needs.

[Program Setup]



⚠ Complete program setup before recording setup.

Key Button

Select **MENU** ▶ Record Setup ▶ Program

- You can specify resolution (R), frame rate (F), and quality (Q) for each channel for normal operation and when events occur.

1. Manual Recording Setup

You can set record to start when a user presses the [REC] button on the front.



Key Button

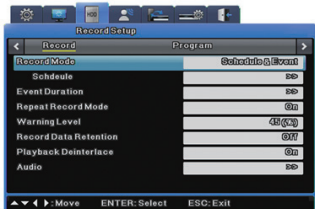
Select **MENU** ▶ Record Setup ▶ Record

- Record Mode : Set manual & event recording.
- Program : Set a Program.

2. Schedule Recording Setup

Scheduled recording lets you choose the date and time to record.

STEP 1 : Record mode settings

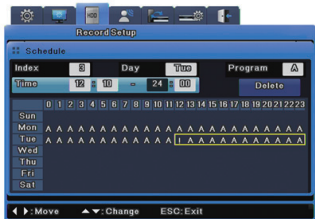


Key Button

Select **MENU** ▶ Record Setup ▶ Record

- Record Mode : Set the Schedule & Event.
- Schedule >>

STEP 2: Schedule settings



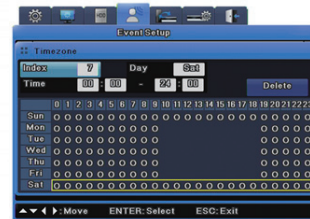
Key Button

Select **MENU** ▶ Record Setup ▶ Record

- Index : Up to 50 different programs can be set.
- Day : Set a recording date.
- Program : Select a recording program (A~T).
- Time : Set a recording time.
- Delete : Delete an Index.

3. Event Recording Setup

STEP 1 : Event check settings



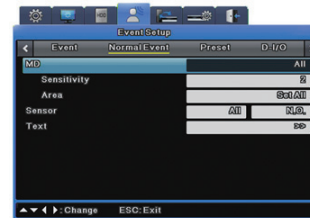
Key Button

Select **MENU** ▶ Event Setup ▶ Event

- Time for event recording
 - Always
 - Timezone : For specified time only.
 - Off : Not using event record.

STEP 2 : Event settings

* Set the general event (MD/Sensor/Text/Audio) for event recording. For more information, please refer to the user manual.



Key Button

Select **MENU** ▶ Event Setup ▶ Normal Event

- MD : Set the event recording channel.
- Sensitivity : Set sensitivity levels from Lowest/1~10/Highest.
- Area : Set user defined parameters.

*Event recording, manual recording and scheduled recording can be used at the same time. Only Event Record is needed : Program > General > Channel > Frame Rate > Ofps.

4. Copy (Back-up)

HDD content can be stored in other storage medium including DVD-R, CD-R and USB memory stick.



Key Button

- Press COPY button after inserting a storage device
- Select Type (CD/DVD, RE4, AVI)
- Select Channel
- Enter From/To Time
- Select Start Button



CD/DVD COPY

Recommended media

- DVD-R : Mitsubishi, TDK, imation, Sony (16X recommended)
- CD-R : Mitsubishi, TDK, imation, Sony (16X recommended)
- USB memory stick : SanDisk (1GB, 2GB, 4GB, 8GB recommended)

* **Caution** : Using authentic and new media products is recommended. If DVD-R or CD-R is over a long period of time, errors may occur.

Free Manuals Download Website

<http://myh66.com>

<http://usermanuals.us>

<http://www.somanuals.com>

<http://www.4manuals.cc>

<http://www.manual-lib.com>

<http://www.404manual.com>

<http://www.luxmanual.com>

<http://aubethermostatmanual.com>

Golf course search by state

<http://golfingnear.com>

Email search by domain

<http://emailbydomain.com>

Auto manuals search

<http://auto.somanuals.com>

TV manuals search

<http://tv.somanuals.com>