

Samsung Visual Display





imagine Samsung Electronics

Samsung Electronics is a global leader in semiconductor, telecommunication, digital media and digital convergence technologies with 2004 parent company sales of US\$55.2 billion and net income of US\$10.3 billion. The company employs approximately 123,000 people in 93 offices in 48 countries.

Recognised as one of the fastest growing brands, Samsung Electronics is the world's largest producer of monitors, TVs, memory chips and TFT-LCDs. By combining the latest technology with a deep rooted understanding of people's aspirations Samsung Electronics has become a true innovator in visual display technology - and the world's leading manufacturer of mobile computers, computer memory, wireless handsets, video recorders and microwaves.

Samsung also manufactures components and products, including PCs, for some of the best known brands in the world - companies that depend on the high quality of our production to develop and grow their businesses. Through its diverse range of products, Samsung can provide a complete IT solution.

For our customers this adds up to one thing - high quality, high performance products that are easy to use and don't cost the earth. And all backed up by the peace of mind that comes from buying from one of the largest companies in the world.



Contents

Samsung Electronics	3
Samsung Visual Displays	4
Technology - LCD	6
Design Awards	8
Magic Series	10
Entry Level	12
Narrow Bezel	14
Digital	15
Multimedia	16
Designer	18
Gaming	20
LCD TV	22
Wide Format for Desktop	24
Large Format for Desktop	26
Digital Signage	28
Networked Digital Signage	30
Plasma	32
Specifications	34





Samsung Visual Displays

Clearly the right choice

Samsung's comprehensive SyncMaster range of monitors combine the very latest visual display technology with stylish and award winning design.

Utilising the latest TFT and Plasma technology the range includes a multitude of screen sizes and features - to ensure a perfectly specified monitor whatever the application.

Delivering stunning image quality and reliability the SyncMaster range make an ideal addition to any reception, shop floor, workplace or home.

As individual as you

Central to the SyncMaster's appeal is a series of advanced Magic features that are designed to maximise ease of use and enhance the performance of each product to suit your needs.





Technology - LCD TFT Features



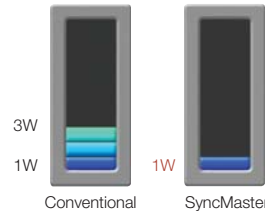
Dynamic Contrast

Dynamic Contrast analyses input signals and then adjusts brightness for optimised contrast. The result: brighter brights and deeper darks.



Innovative Power Saving System (DPMS)

SyncMaster monitors are automatically powered by the main computer for greater convenience and power saving. Display Power Management Signaling (DPMS) ensures minimal power consumption (under 1W).



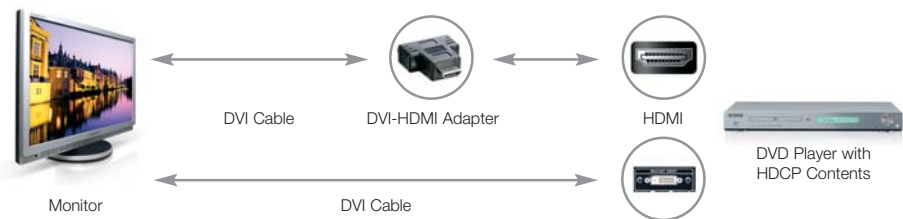
Wall and Arm Mountable

The VESA 75mm or 100mm wall mount compatible design provides maximum function and flexibility to fit into any working environment.



High-Bandwidth Digital Contents Protection (HDCP)

HDCP protects the integrity of the content that is transmitted to your TV and delivers quality, high-resolution images. All Samsung models support HDCP.



RoHS

As of July 2006, all Samsung monitors comply with the EU directive on restricting the use of hazardous substances (RoHS) in electrical and electronic equipment. Samsung was also first in the world to receive the Nemko RoHS Compliance Mark.

Technology - LCD TV Monitors



Supports Various External A/V Devices

SyncMaster monitors seam effortlessly with a wide range of multimedia devices. They support DVI, D-sub, BNC connectors, s-Video and other external A/V devices.



HDTV Ready

HDTV-ready with an integrated TV tuner, Samsung monitors also act as a high-contrast, fully geared stand-alone TV. Users can enjoy high resolution, fine image TV viewing from one multi-use unit.



FM Radio

SyncMaster monitors offer various interfaces for the multimedia generation. Equipped with FM radio function, users can tune into radio stations by simply pressing the 'FM radio' button on the remote control or monitor bezel.



Monitor as a TV (Built-in TV Tuner)

With Built-in TV Tuner, you can even watch TV without a PC.



Multi-tasking AV and PC with PIP/PBP/POP

The SyncMaster allows you to work on your computer while enjoying a pop-up screen showing TV, DVD, Video or DTV simultaneously with SyncMaster's PIP (Picture-in-Picture), PBP (Picture-by-Picture) and POP (Picture out of Picture)



Excellent Sound Quality

Built-in speakers deliver impressive sound quality for TV watching, online training, music listening, gaming and DVD playback.



All-in-one Remote Control

Our multifunctional monitor series also come equipped with all-in-one remote controls, enabling users to conveniently access all features including TV, DVD and PIP/PBP.



Design Awards

SyncMaster Monitor Achieves Grand Slam in Design Awards!

Ultra-slim and ultra-sleek

Design Award Grand Slam



iF Design
Germany

Six consecutive iF Design Awards (2000, 2001, 2002, 2003, 2004 and 2006)

Recognised throughout the world as one of the most prestigious distinctions for manufacturers, the iF Design Award recognises the best product designs. The vast judging criteria include quality of design, workmanship, material and user-friendliness. A winner for six consecutive years, SyncMaster 770P and 960BF won the iF Design Award in 2006.



Good Design
Japan

2005 Good Design Award

SyncMaster 770P also won the Good Design Award in the category of Product Design for PCs and Related Products. Sponsored by Japan industrial Design Promotion Organisation (JIDPO), the award honours products whose designs help to enrich users' lives.



reddot design award
winner 2006

Reddot Design
Germany

Three years in a row - Red Dot Design Award in 2004, 2005 and 2006

Long recognised as the international seal of quality for outstanding design, the Red Dot Design Award is one of the most coveted industrial design awards. Attracting over 4,000 entries from 40 countries, it ranks among the largest design competitions in the world. Winners receive instant attention not only in Germany and Europe, but also in the global market. Samsung won the Red Dot Design Award for three consecutive years: for 173P in 2004, 720T in 2005 and 770P in 2006.

Hot Spot of World Media A New Standard for Digital Display

Two Thumbs Up Award

"If you want an LCD monitor that makes a statement, check out the SyncMaster 970P from Samsung. This 19-inch gem is both beautiful and functional..."

VAR Business, U.S.A (2006 January)

"The time I set this monitor on my table I almost forgot that I was looking at the monitor. It was like bright and vivid picture hanging in the air. SyncMaster 970P means a classic simplicity of shape..."

PL Computers, Russia (2005 October)

"SAMSUNG SyncMaster 770P is the good combination monitor between stylish design, high display performance and reasonable price..."

HWH, Thailand (2005 September)



770P/970P



Magic Series

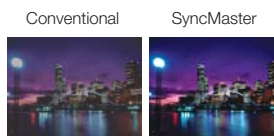
LCD Magic Series

With Samsung's Magic series of monitor technologies, it's easy to enjoy the most up-to-date innovations. Experience pioneering features in eye-popping, user friendly designs.



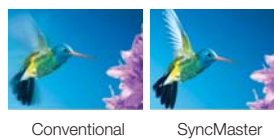
MagicContrast

Samsung's LCD monitors offer a rich palette of vibrant colours with high contrast ratios of up to 1500:1. It's the perfect choice for watching movies or motion video in detailed imagery.



MagicSpeed

Super-fast 8ms, 6ms, 5ms, 4ms and 2ms response times ensure an optimised viewing experience of DVDs and streaming video.



MagicColor

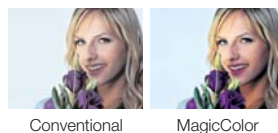
Extra colour, extra vividness and extras image quality. MagicColor automatically enhances colour in areas that need colour correction. The cutting-edge technology intelligently calculates the saturation of red, green and blue in the input signal to reproduce the most natural colour shades.

Intelligent Mode (Skin Tone Protection)



Hues and saturation of colours can be optimised to provide vivid pictures. In intelligent mode, colour quality is enhanced except specific colours such as skin tone, whose changes are easily recognised.

Full Mode (Full Colour Enhancement)



The hue and saturation of the entire screen can be enhanced to produce clear and lively colours.



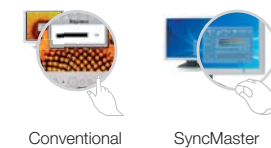
MagicBright2

MagicBright has five modes to best serve your application needs: Text, Internet, Game, Sports, Movie and Custom Adjustment. Brightness and contrast are adjusted according to preconfigured settings to allow users to get the most of their viewing experience.

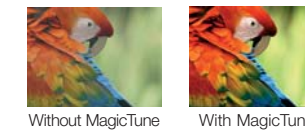


MagicTune™

MagicTune software enables users to change various display settings such as brightness, contrast and colour levels with just a click of the mouse.



Mouse-operated OSD control software
All display functions are easily and conveniently controlled with a mouse.



Colour calibration for accurate colour images
With MagicTune™ colour calibration, all images look just like the original.



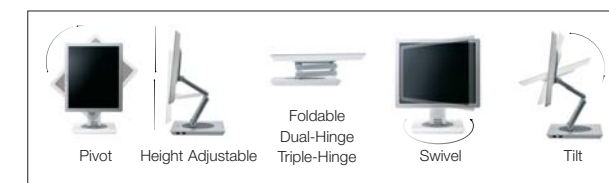
MagicClear

SyncMaster monitors with MagicClear provide the perfect environment for games and multimedia by producing dramatic colour and sharp, fluid images.



MagicStand

MagicStand offers the most flexible pivoting control with a four-way, triple hinge adjustable stand with swivel and tilt capabilities for maximum versatility.



MagicRotation (with Auto Pivot)

The automatic pivot feature instantly tracks movement of the screen image, providing ease and comfort, especially when working with multipage documents.





SM720N and SM920N

Vibrant, detailed images in a sleek and stylish design

Providing exceptional performance at a budget price, Samsung's entry level TFT monitors make an attractive space saving addition to any work or home environment. They are the perfect upgrade from a traditional bulky CRT display.

- Ultra narrow, slim and lightweight design
- Razor-sharp images
- Easy to set up and configure with plug and play functionality
- Choice of screen sizes (17" or 19") to suit your needs
- Hassle-free operation with a comprehensive 3 year warranty





Narrow Bezel

SM540N, SM740N and SM940N

Ultra-slim and sleek for the style and space conscious

Sleek and minimalist, the dynamic lines and slim frame of Samsung's monitors bring you adaptable and versatile working, while fast response times and high contrast ratios deliver staggering image quality.

- Space saving ultra-thin bezel and wall-mount capability
- Choice of screen sizes (15", 17" or 19") to suit your needs
- Fast response time (8ms)
- Fully height adjustable stand with tilt for easy viewing (SM740N/SM940N)
- Flexibility to display information in portrait or landscape (SM740N/SM940N)



Digital

SM740B, SM940B, SM740T, and SM940T

Uniting unbelievable colour and clarity with perfect digital quality

Within their design, the Samsung digital TFT monitors combine a completely flat screen with digital input, so images are crisp and completely distortion free. Dual inputs allow two sources to be viewed through one screen, while a super narrow bezel saves valuable desk space.

- Choice of analogue and digital inputs
- Superb image quality - sharp and bright
- Space saving ultra-thin bezel and wall-mount capability
- Choice of screen sizes (17" or 19") to suit your needs
- Optional panel type (TN or PVA)





SM713BM and SM913TM

With inbuilt speakers, the SM713BM and SM913TM are ideal for enjoying multimedia content at home or in the office. Featuring screen pivot and height adjustable stand these monitors can be positioned in the ideal viewing position. Combine all this with stunning image quality, a comprehensive 3 year warranty and you have the ideal display.

- Multimedia speakers
- 17"/19" screen sizes
- Analogue and digital input
- Fast response time and wide viewing angles
- Height adjustable stand and screen pivot



Designer



SM970P, SM960BF, SM960BG and SM971P

Stand out in the crowd with the ultimate in sophisticated visual displays

When you need to make a good impression, but don't want to compromise on quality, Samsung's designer displays offer the best of everything - design, image and flexibility.

- High quality, vivid and clear images
- Choice of colours to suit your needs
- Ultra flexible screen pivot and height control
- Incredible contrast ratio (1500:1)
- Unique buttonless design
- Dual Input





SM731BF and SM931BF

Boasting a blistering 2ms response time the SM731BF (17") and SM931BF (19") are perfect for gaming and watching video content. MagicSpeed reduces ghosting and jagged pixel effects on such content ensuring improved image quality and user experience. All this combined with sleek design and dual inputs make this one of the most sought after screens on the market.

- 2ms response time
- World best contrast ratio of 2000:1
- 17"/19" screen sizes
- Analogue and digital inputs
- 3 year warranty



LCD TV



SM711MP, SM910MP and SM940MW

Everything you need to stay informed - anytime, anywhere

Now you can afford to enjoy a true multimedia experience with Samsung's entry level LCD TV Monitors. This monitor and television combination is small enough to fit in anywhere, but stylish enough to make a big impact.

- Integrated TV tuner, speakers, Teletext and remote
- Extremely clear and responsive image quality
- Stylish and practical design
- Ergonomic design and easy to use, with innovative power saving system
- Can be wall or arm mounted



SM932MP and SM242MP

Enjoy a true multimedia experience wherever you chose

Liberate your home or workspace with these high performance televisions that can also be used as monitors and multimedia entertainment centres.

- State-of-the-art image quality and control
- Widescreen for easy viewing (SM940MW only)
- Built-in FM radio, as well as TV tuner, speakers and Teletext





Wide Format for Desktop

SM940BW, SM205BW, SM215TW and SM225BW

See the bigger picture

Samsung's latest widescreen monitors bring a new and exciting perspective to life. Ultra-high resolution images and crisp clean text, viewable across a much larger area, make it so much easier to work and play.

Compared to traditional 4:3 aspect monitors, choosing a wide aspect 16:10 screen allows you to:

- **Do more** - View multiple applications, documents or spreadsheets side-by-side, so you don't waste time clicking and scrolling around the screen to read or compare information.
- **Use less** - Why run multiple applications on dual monitors, when a single wide screen monitor makes multi-tasking so easy, and takes up so much less desk space.
- **See more** - View content designed in 16:9 aspect ratio, such as DVDs and games, as it's meant to be seen - without distortion! Plus you get dual inputs, support for HDCP and, in the SM215TW, Picture-in-Picture/Picture-by-Picture features.
- **Spend less** - Future proof your investment with a technology designed to handle the growing volume of business and entertainment applications available in HD wide screen format





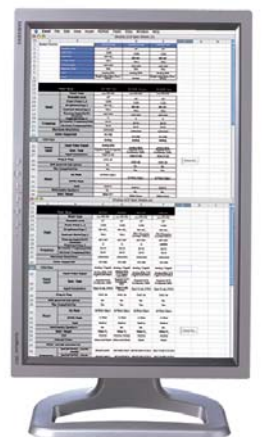
Large Format for Desktop

SM203B, SM204B, SM214T, SM244T

The professional choice for intensive users

Samsung's large format PC monitors provide an effective working environment for professionals who need that little bit more space to see the bigger picture. Offering large high resolution screens which provide multi-document viewing.

- Innovative space-saving narrow bezel design
- Choice of screen sizes (20" or 21") to suit your needs
- Pivoting display for comfortable and easy viewing
- Ideal for document or graphic intensive work eg. CAD/CAM, graphic/web designer, engineering, etc.
- Flexibility of dual inputs to accommodate either an analogue or digital signal





SM320P and SM400PX and SM460P

Make sure you're seen and heard - loud and clear

On those occasions where image size is paramount these displays are ideal. With a high resolution they are perfect for applications where picture definition is critical, such as point of sale and point of information spaces. Featuring plug and play as standard, they support both data and video signals. Optional wall mount bracket and speakers are also available, making them the most flexible and powerful large screen displays on the market.

- High contrast ratio 10000:1
- Luxurious narrow and slim design
- High resolution 32", 40" and 46" screen sizes for maximum clarity
- Economical to run with low power consumption
- Allow input from various multimedia devices
- Ultra-fast 8ms response times and crisp sharp images
- Anti-glare coating to minimise reflection

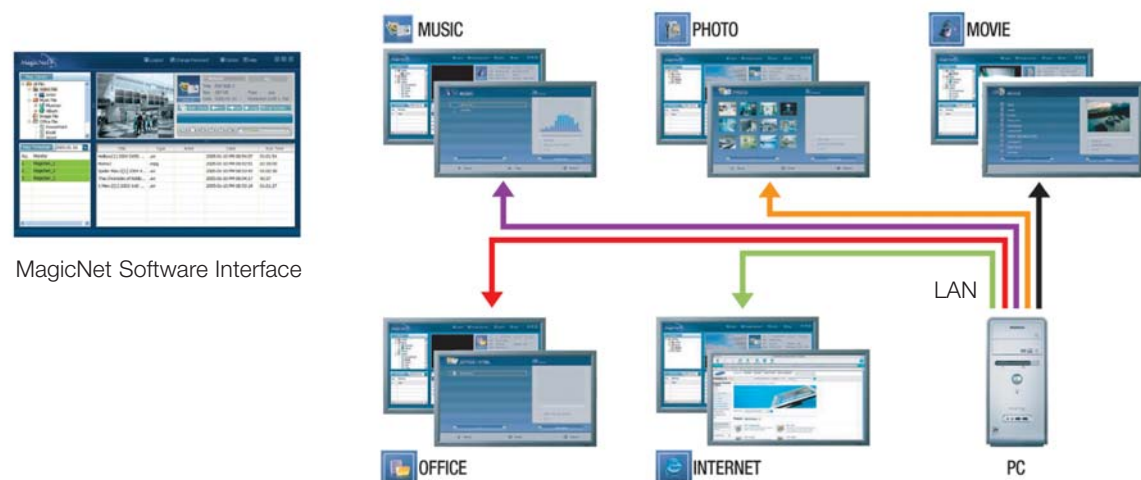




Networked Digital Signage

MagicNet allows you to distribute content across the network delivering unique content to each screen from a single PC.

As such, MagicNet is perfect for businesses that want the benefits of digital signage without the need for a dedicated PC for each display. Ideally suited to airports, hotels, shopping malls, offices, corporate lobbies, theatres, museums, exhibitions, and sports venues. MagicNet transmits media files (photo, audio and movie files) and office files (Power Point, Excel, Word, HTML and PDF files) existing on a server, to screens connected to a network using the server/client architecture. Several screens can be connected to a LAN, with content scheduled to appear at pre-defined times. This technology is unique to Samsung displays and not only delivers considerable cost savings, but also improves the delivery of information.



SM400PXn and SM460Pn

Get the right message across - to the right people at the right time

Optimise the performance of retail, travel, office, leisure, sports and entertainment locations by delivering targeted information 24/7.

- Choice of stylish and slim screen sizes (40" or 46") to suit your needs
- Crisp, clear images with industry leading image optimisation and response times
- Run multiple screens from one PC, each showing different information/offers, using 'MagicNet'
- Combine multiple screens to show one larger image





PPM42M6SSX, PPM42M6HSX, PPM50M5HSX and PPM63H3QX

Always make a big impression, whatever you want to say



Whether you are delivering a presentation, displaying customer information or teleconferencing, Samsung's plasma displays give you the quality and versatility needed to grab and sustain everyone's attention.

- Slim and stylish design means they can be placed virtually anywhere
- Choice of screen sizes (42", 50" or 63") to suit your needs
- Can be mounted either horizontally, vertically, or set up as a multi-screen video wall
- Capable of displaying a variety of inputs from any conventional broadcast source, including video, PC, etc.
- Proprietary DNIe™ technology creates lifelike images with vivid colour and optimal detail
- 10,000:1 contrast ratio for stunning image quality





	Entry Level		Narrow Bezel			Digital				Multimedia	
	SM720N	SM920N	SM540N	SM740N HAS	SM940N*	SM740B	SM740T	SM940B	SM940T	SM713BM	SM913TM
Panel Type	a-si TFT/TN	a-si TFT/TN	a-si TFT/TN	a-si TFT/TN	a-si TFT/TN	a-si TFT/TN	a-si TFT/PVA	a-si TFT/TN	a-si TFT/PVA	a-si TFT/TN	a-si TFT/PVA
Viewable Area	17"	19"	15"	17"	19"	17"	17"	19"	19"	17"	19"
Pixel Pitch	0.264	0.294	0.297	0.264	0.294	0.264	0.264	0.294	0.294	0.264	0.294
Brightness (cd/m²)	300	250	250	300	300	300	280	300	250	300	250
Contrast Ratio	600:1	700:1	450:1	600:1	700:1	600:1	1500:1	700:1	1000:1	700:1	1000:1
Viewing Angle (H/V)	160°/160°	160°/160°	140°/120°	160°/160°	160°/160°	160°/160°	178°/178°	160°/160°	178°/178°	160°/160°	178°/178°
Response Time (ms)	8	8	16	8	8	8	25	8	20	8	8
Interface	Analogue	Analogue	Analogue	Analogue	Analogue	Analogue/Digital	Analogue/Digital	Analogue/Digital	Analogue/Digital	Analogue/Digital	Analogue/Digital
Horizontal Frequency (kHz)	30-81	30-81	30-61	30-81	30-81	30-81	30-81	30-81	30-81	30-81	30-81
Vertical Frequency (Hz)	56-75	56-75	56-75	56-75	56-75	56-75	56-75	56-75	56-75	56-75	56-75
Maximum Resolution	1280 x 1024	1280 x 1024	1024 x 768	1280 x 1024	1280 x 1024	1280 x 1024	1280 x 1024	1280 x 1024	1280 x 1024	1280 x 1024	1280 x 1024
Colours Supported	16.2 Mil.	16.2 Mil.	16.2 Mil.	16.2 Mil.	16.2 Mil.	16.2 Mil.	16.7 Mil.	16.2 Mil.	16.7 Mil.	16.2 Mil.	16.2 Mil.
Input Video Signal	Analogue RGB	Analogue RGB	Analogue RGB	Analogue RGB	Analogue RGB	Analogue RGB, DVI Digital link: TMDS	Analogue RGB, DVI Digital link: TMDS	Analogue RGB, DVI Digital link: TMDS	Analogue RGB, DVI Digital link: TMDS	Analogue RGB, DVI Digital link: TMDS	Analogue RGB, DVI Digital link: TMDS
Input Connectors	15pin D-sub	15pin D-sub	15pin D-sub	15 Pin D-sub	15pin D-sub	15pin D-sub,DVI-D	15pin D-sub,DVI-D	15pin D-sub,DVI-D	15pin D-sub,DVI-D	15pin D-sub,DVI-D	15pin D-sub,DVI-D
Power Consumption	34 Watts (Max.)	38 Watts (Max.)	25 Watts (Max.)	34 Watts (Max.)	38 Watts (Max.)	34 Watts (Max.)	34 Watts (Max.)	38 Watts (Max.)	38 Watts (Max.)	38 Watts (Max.)	42 Watts (Max.)
Standby Mode	<1 Watt	<1 Watt	<1 Watt	<1 Watt	<1 Watt	<1 Watt	<1 Watt	<1 Watt	<1 Watt	<1 Watt	<1 Watt
Energy star / NUTEK	Yes	Yes	Yes	Yes	Yes	Yes	Yes	Yes	Yes	Yes	Yes
Multimedia Speakers	No	No	No	No	No	No	No	No	No	1Wx2Ch	1Wx2Ch
Wall-Mount (mm)	VESA 100	VESA 100	VESA 75	VESA 75	VESA 75	VESA 75	VESA 75	VESA 75	VESA 75	VESA 100	VESA 100
Emissions Standard	TCO'99	TCO'99	TCO'99	TCO'99	TCO'03/TCO'99	TCO'03/TCO'99	TCO'03	TCO'03/TCO'99	TCO'03	TCO'99	TCO'99
Colour	Silver/Black	Silver/Black	Silver/Black	Silver/Black	Silver/Black	Silver/Black	Silver/Black	Silver/Black	Silver/Black	Silver	Silver
Mac Compatible	Yes	Yes	Yes	Yes	Yes	Yes	Yes	Yes	Yes	Yes	Yes
Set (WxHxD) (with stand)	370 x 386.5 x 195.4	416.6 x 424.6 x 215.5	337.5 x 336.8 x 180	366 x 379.3 x 200 (Simple Stand) 366 x 391.2 x 200 (HAS)	407.6 x 421.5 x 217 (Simple Stand) 407.6 x 408 x 200 (HAS)	366 x 391.2 x 200	362.1 x 389 x 200	407.6 x 408 x 200	403.2 x 406.4 x 200	370 x 386.7 x 195.3 (Simple) 370 x 404 x 200 (HAS)	416.6 x 420.6 x 200
Set (WxHxD) (w/o stand)	370 x 316 x 60.3	416.6 x 349.4 x 60.2	337 x 264 x 60	366 x 301.4 x 60.2	407.6 x 335 x 65.4	366 x 301.4 x 60.2	362.1 x 298.2 x 60.2	407.6 x 335 x 65.4	403.2 x 331.9 x 65.4	370 x 342.3 x 64.1	416.6 x 377.5 x 64.2
Packing (WxHxD)	455 x 437 x 141	509 x 494 x 150	389 x 380 x 132	497 x 382 x 235	495 x 476 x 150 (Simple Stand) 524 x 414 x 235 (HAS)	497 x 382 x 235	497 x 375 x 235	524 x 414 x 235	522 x 412 x 235	451 x 440 x 140 (Simple) 508 x 431 x 235 (HAS)	526 x 469 x 235
Weight Net (kg)	4.4	6.0	2.75	3.4 (Simple Stand) 4.7 (HAS)	4.8 (Simple Stand) 5.5 (HAS)	4.7	4.6	5.5	5.35	5.8 (HAS) / 4.6 (Simple)	7.2
Weight Gross inc packaging (kg)	6	7.6	3.5	6.6	6.7 (Simple Stand) 7.7 (HAS)	6.6	6	7.7	6.8	8 (HAS) / 6 (Simple)	9
Warranty	3 Year	3 Year	3 Year	3 Year	3 Year	3 Year	3 Year	3 Year	3 Year	3 Year	3 Year
Stand	Simple/Tilt	Simple/Tilt	Simple	HAS: Height Adjustable & Pivot, Swivel	Available as Simple and HAS: Height Adjustable, Pivot, Swivel	HAS: Height Adjustable & Pivot, Swivel	HAS: Height Adjustable & Pivot, Swivel	HAS: Height Adjustable & Pivot, Swivel	HAS: Height Adjustable & Pivot, Swive	Simple and HAS: Height Adjustable, Swivel, Pivot	HAS: Height Adjustable, Pivot

	Designer				Gaming		LCD TV				
	SM970P	SM960BF	SM960BG	SM971P	SM731BF	SM931BF	SM711MP	SM910MP	SM940MW	SM932MP	SM242MP
Panel Type	a-si TFT/PVA	a-si TFT/TN	a-si TFT/TN	a-si TFT/PVA	a-si TFT/TN	a-si TFT/TN	a-si TFT/TN	a-si TFT/TN	a-si TFT/TN	a-si TFT/TN	a-si TFT/PVA
Viewable Area	19"	19"	19" with MagicClear™	19"	17"	19"	17"	19"	19" Wide	19" with MagicClear™	24"
Pixel Pitch	0.294	0.294	0.294	0.294	0.264	0.294	0.264	0.294	0.294	0.294	0.270
Brightness (cd/m²)	250	300	300	250	300	300	300	300	300	400	500
Contrast Ratio	1000:1	700:1	700:1	1500:1	600:1 (Dynamic Contrast 2000:1)	700:1 (Dynamic Contrast 2000:1)	700:1	700:1	600:1	550:1	1000:1
Viewing Angle (H/V)	178°/178°	160°/160°	160°/160°	178°/178°	160°/160°	160°/160°	160°/160°	160°/160°	160°/160°	160°/160°	178°/178°
Response Time (ms)	6	4	4	6	2	2	8	8	8	8	16
Interface	Analogue/Digital	Analogue/Digital	Analogue/Digital	Analogue/Digital	Analogue/Digital	Analogue/Digital	Analogue	Analogue	Analogue/Digital	Analogue/Digital	Analogue/Digital
Horizontal Frequency (kHz)	30-81	30-81	30-81	30-81	30-81	30-81	31-81	31-81	33-81	31-81	31-81
Vertical Frequency (Hz)	56-75	56-75	56-75	56-75	56-75	56-75	56-75	56-75	56-75	56-85	56-75
Maximum Resolution	1280 x 1024	1280 x 1024	1280 x 1024	1280 x 1024	1280 x 1024	1280 x 1024	1280 x 1024	1280 x 1024	1440 x 900	1280 x 1024	1920 x 1200
Colours Supported	16.7 Mil.	16.7 Mil.	16.7 Mil.	16.7 Mil.	16.2 Mil.	16.2 Mil.	16.2 Mil.	16.2 Mil.	16.7 Mil.	16.2 Mil.	16.7 Mil.
Input Video Signal	Analogue RGB, DVI Digital link: TMDS	Analogue RGB, DVI Digital link: TMDS	Analogue RGB, DVI Digital link: TMDS	Analogue RGB, DVI	Analogue RGB, DVI Digital Link:TMDS	Analogue RGB, DVI Digital Link:TMDS	Analogue RGB, Composite, S-Video TV (antenna/cable)	Analogue RGB, Composite S-Video TV (antenna/cable) SCART	Analogue RGB, DVI Digital Link, CVBS, S-Video, Component, TV (antenna/cable), SCART	Analogue RGB, DVI Digital Link: TMDS, Composite S-Video, Component TV (antenna/cable)	Analogue RGB, DVI Digital Link: TMDS, Composite, S-Video, Component,
Input Connectors	DVI-I	DVI-I	DVI-I	DVI-I	15pin D-sub, DVI-D	15pin D-sub, DVI-D	15pin D-sub, S-Video, RCA connector, RF	15pin D-sub, CVBS, S-Video, SCART, RF	15pin D-sub, DVI-D CVBS, S-Video, SCART Component, RF	15pin D-sub, DVI-D CVBS, S-Video, SCART Component, RF	15pin D-sub, DVI-D, CVBS, S-Video, SCART, Component, RF
Power Consumption	36 Watts (Max.)	38 Watts (Max.)	38 Watts (Max.)	36 Watts (Max.)	34 Watts (Max.)	38 Watts (Max.)	43 Watts (Max.)	49 Watts (Max.)	55 Watts (Max.)	58 Watts (Max.)	150 Watts (Max)
Standby Mode	<1 Watt	<1 Watt	<1 Watt	<1 Watt	<1 Watt	<1 Watt	<2 Watts	<2 Watts	<2 Watts	<2 Watts	<2 Watts
Energy star / NUTEK	Yes	Yes	Yes	Yes	Yes	Yes	Yes	Yes	Yes	Yes	Yes
Multimedia Speakers	No	No	No	No	No	No	1.5W x 2ch.	3W x 2ch.	3W x 2ch.	5W x 2ch.	5Wx 2ch. (option)
Wall-Mount (mm)	No	No	No	No	VESA 75	VESA 75	VESA 75	VESA 100	VESA 100	VESA 100	VESA 100
Emissions Standard	TCO'03	No	No	No	TCO'03	TCO'03	TCO'99	TCO'99	TCO'99	TCO'99	TCO'99
Colour	White and Black	High Gloss White	High Gloss White or Black	High Gloss White or Black	Black	Black	Silver	Silver	Silver	Silver	Dark Gray, Silver
Mac Compatible	Yes	Yes	Yes	Yes	Yes	Yes	Yes	Yes	Yes	Yes	Yes
Set (WxHxD) (with stand)	424 x 507 x 242	420.2 x 420.5 x 258.8	420.2 x 420.5 x 258.8	423 x 433 x 228	380.0 x 384.8 x 202.2	422.7 x 427.9 x 219.3	389 x 402.5 x 206	430 x 434.4 x 227.8	466 x 406 x 216	433 x 436 x 198	558.4 x 427.2 x 177
Set (WxHxD) (w/o stand)	424 x 350 x 41.2	420.2 x 348 x 35.8	420.2 x 348 x 35.8	423 x 387 x 72 (Folded Stand)	380.0 x 325.0 x 57.3	422.7 x 360.2 x 62.5	389 x 386 x 63	430 x 420 x 63	466 x 371 x 66	433 x 419.5 x 58	558.4 x 380.7 x 90
Packing (WxHxD)	521 x 186 x 447	492 x 137 x 547	492 x 137 x 547	557 x 151 x 441	445.0 x 133.0 x 440.0	510.0 x 149.0 x 485.0	482 x 542 x 148	527 x 582 x 162	532 x 553 x 165	532 x 553 x 165	648 x 508 x 270
Weight Net (kg)	7.3	5.6	5.6	6	3.75 kg	5.5	5.35	5.8	6.2	5.9	9
Weight Gross inc packaging (kg)	9.6	7.7	7.7	8	5.5 kg	7.7	6.95	7.9	8	8.9	10.5
Warranty	3 Year	3 Year	3 Year	3 Year	3 Year	3 Year	3 Year	3 Year	3 Year	3 Year	3 Year
Stand	HAS: Height Adjustable, Swivel, Pivot	HAS: Height Adjustable, Pivot, Foldable	HAS: Height Adjustable, Pivot, Foldable	HAS: Height Adjustable, Pivot, Foldable	Simple	Simple	Foldable	Simple	Foldable	Foldable	Simple

Specifications

	Wide Format for Desktop			
	SM940BW	SM205BW	SM215TW	SM225BW
Panel Type	a-si TFT/TN	a-si TFT/TN	a-si TFT/PVA	a-si TFT/TN
Viewable Area	19" Wide	20" Wide	21" Wide	22" WIDE
Pixel Pitch	0.285 x 0.285	0.258 x 0.258	0.270 x 0.270	0.282 x 0.282
Brightness (cd/m ²)	300	300	300	280
Contrast Ratio	500:1	600:1	1000:1	700:1
Viewing Angle (H/V)	160°/160°	160°/160°	178°/178°	160°/160°
Response Time (ms)	4	6	8	5
Interface	Analogue/Digital	Analogue/Digital	Analogue/Digital	Analogue/Digital
Horizontal Frequency (kHz)	30 - 81	30 - 81	30 - 81	30 - 81
Vertical Frequency (Hz)	56 - 75	56 - 75	56 - 75	56 - 75
Maximum Resolution	1440 x 900	1680 x 1050	1680 x 1050	1680 x 1050
Colours Supported	16.2 Mil.	16.7 Mil.	16.7 Mil.	16.7 Mil.
Input Video Signal	Analogue RGB, DVI Digital Link TMDS	Analogue RGB, DVI Digital Link TMDS	Analogue RGB, DVI Digital Link TMDS Composite, S-video component	Analogue RGB, DVI Digital Link
Input Connectors	15pin D-sub, DVI-D	15pin D-sub, DVI-D	15pin D-sub, DVI-D CVBS, S-VIDEO Component	15pin D-sub, DVI-D
Power Consumption	42 Watts (Max)	55 Watts (Max)	75 Watts (Max)	55 Watts (Max)
Standby Mode	<1 Watt	<2 Watts	<2 Watts	<2 Watts
Energy star / NUTEK	Yes	Yes	Yes	Yes
Multimedia Speakers	No	No	Yes	No
Wall-Mount (mm)	VESA 75	VESA 100	VESA 100	VESA 100
Emissions Standard	TCO'03	TCO'03	TCO'03	TCO'03
Colour	Silver/Black	Silver/Black	Silver/Black	Silver/Black
Mac Compatible	Yes	Yes	Yes	Yes
Set (WxHxD) (with stand)	439 x 360.7 x 200	471.4 x 351.8 x 200	490 x 377 x 219.8	504.7 x 219.8 x 408
Set (WxHxD) (w/o stand)	439 x 289 x 65.4	471.4 x 307.9 x 69.5	490 x 342.5 x 72	504.7 x 65.8 x 335.1
Packing (WxHxD)	525 x 234 x 398	564 x 234 x 424	587 x 262 x 450	608 x 256 x 484
Weight Net (kg)	5.6	6.8	7.5	6.9
Weight Gross inc packaging (kg)	6.9	8.1	9	9.4
Warranty	3 Year	3 Year	3 Year	3 Year
Stand	HAS: Height Adjustable, Swivel, Tilt	HAS: Height Adjustable, Swivel, Tilt	HAS: Height Adjustable, Swivel, Tilt	HAS: Height Adjustable, Swivel, Tilt

	Large Format for Desktop			
	SM203B	SM204B	SM214T	SM244T
Panel Type	a-si TFT/TN	a-si TFT/TN	a-si TFT/PVA	a-si TFT/PVA
Viewable Area	20" SXGA+	20.1"	21.3"	24"
Pixel Pitch	0.292 x 0.292	0.255 x 0.255	0.270 x 0.270	0.270 x 0.270
Brightness (cd/m ²)	300	300	300	500
Contrast Ratio	600:1	800:1	1000:1	1000:1
Viewing Angle (H/V)	160°/160°	160°/160°	178°/178°	178°/178°
Response Time (ms)	8	5	8	6
Interface	Analogue/Digital	Analogue/Digital	Analogue/Digital	Analogue/Digital
Horizontal Frequency (kHz)	30 - 81	30 - 81	30 - 81kHz	30 - 81kHz
Vertical Frequency (Hz)	56 - 75	56 - 75	56 - 75Hz	56 - 75Hz
Maximum Resolution	1400 x 1050	1600 x 1200	1600x1200@60Hz (Analog) 1600x1200@60Hz (Digital)	1920x1200@60Hz (Analog) 1920x1200@60Hz (Digital)
Colours Supported	16.2 Mil.	16.7 Mil.	16.7 Mil.	16.7 Mil.
Input Video Signal	Analogue RGB, DVI Digital Link:TMDS	Analogue RGB,DVI Digital	Analogue RGB, DVI Digital Link:TMDS, CVBS, S-Video	Analogue RGB, DVI Digital Link:TMDS, CVBS, S-Video, Component
Input Connectors	15pin D-sub, DVI-D	15pin D-sub, DVI-D	15pin D-sub, DVI-D CVBS, S-Video	15pin D-sub, DVI-D CVBS, S-Video,Component
Power Consumption	45 Watts (Max)	63 Watts (Max)	65 Watts (Max)	100 Watts (Max)
Standby Mode	<2 Watts	<2 Watts	2 Watts	2 Watts
Energy star / NUTEK	Yes	Yes	Yes	Yes
Multimedia Speakers	No	No	No	No
Wall-Mount (mm)	VESA 100	VESA 100	VESA 100	VESA 100
Emissions Standard	TCO'03	TCO'03 ,TCO'99(Black)	TCO'03 ,TCO'99(Black)	TCO'03 ,TCO'99(Black)
Colour	Silver/Black	Silver/Black	Silver/Black	Silver/Black
Mac Compatible	Yes	Yes	Yes	Yes
Set (WxHxD) (with stand)	HAS: 444 x 427.6 x 200	444 x 427.6 x 200	469 x 466.2 x 228.5	560.4 x 443.5 x 247.1
Set (WxHxD) (w/o stand)	444 x 344 x 65.4	444 x 344 x 74.5	469 x 363 x 79.6	560.4 x 366.0 x 92.1
Packing (WxHxD)	HAS: 417 x 551 x 234	424 x 551 x 235	456 x 583 x 288	469 x 725 x 302
Weight Net (kg)	HAS: 6.8	7.7	8.8	9.45
Weight Gross inc packaging (kg)	HAS: 8.7	9	11.2	12.2
Warranty	3 Year	3 Year	3 Year	3 Year
Stand	HAS: Height Adjustable	HAS: Height Adjustable	HAS: Height Adjustable	HAS: Height Adjustable

	Digital Signage			Networked Digital Signage	
	SM320P	SM400PX	SM460P	SM400PXn	SM460Pn
Panel Type	a-si TFT/PVA	a-si TFT/PVA	a-si TFT/PVA	a-si TFT/PVA	a-si TFT/PVA
Viewable Area	32"	40"	46"	40"	46"
Pixel Pitch	0.511	0.648(H) x 0.648(W)	0.2485	0.648(H) x 0.648(W)	0.2485
Brightness (cd/m ²)	450	500	500	500	500
Contrast Ratio	1000:1	1200:1	800:1	1200:1	800:1
Viewing Angle (H/V)	170°/170°	178°/178°	170°/170°	178°/178°	170°/170°
Response Time (ms)	8	8	8	8	8
Interface	Analogue/Digital	Analogue/Digital	Analogue/Digital	Analogue/Digital	Analogue/Digital
Horizontal Frequency (kHz)	30 - 70	30 - 70	31 - 70	30 - 70	31 - 70
Vertical Frequency (Hz)	50 - 85	50 - 85	50 - 85	50 - 85	50 - 85
Maximum Resolution	1366 x 768	1366 x 768	1366 x 768	1366 x 768	1366 x 768
Colours Supported	16.7 Mil.	16.7 Mil.	16.7 Mil.	16.7 Mil.	16.7 Mil.
Input Video Signal	Analogue RGB, BNC DVI, Composite S-Video, Component Video Separate H/V, Composite	Analog RGB, DVI-D, Composite S-Video, component Video	Analogue RGB, DVI-D, Composite S-Video, Component Video	Analogue RGB, DVI-D, Composite S-Video, component Video	Analogue RGB, DVI-D, Composite S-Video, Component Video
Input Connectors	D-sub, Audio Cable	D-sub, RS232C cable	D-sub, RS232C cable	D-sub, RS232C cable	D-sub, RS232C cable
Power Consumption	170 Watts (Max)	230 Watts (Max)	300 Watts (Max)	230 Watts (Max)	310 Watts (Max)
Standby Mode	<5 Watts	<1Watt	<5 Watts	<1Watt	<5 Watts
Energy star / NUTEK	Yes	Yes	Yes	Yes	Yes
Multimedia Speakers	10W x 2ch (Option)	10W x 2ch (Option)	10W x 2ch (Option)	10W x 2ch (Option)	10W x 2ch (Option)
Wall-Mount (mm)	Mounting kit available (option)	Mounting Kit Available (option)	Mounting kit available (option)	Mounting Kit Available (option)	Mounting kit available (option)
Emissions Standard	TCO'03	TCO'03	TCO'03	TCO'03	TCO'03
Colour	Dark Silver	Dark Silver	Dark Silver	Dark Silver	Dark Silver
Mac Compatible	Yes	Yes	Yes	Yes	Yes
Set (WxHxD) (with stand)	780 x 529 x 223	971 x 629.5 x 223	1102 x 715 x 293	971 x 629.5 x 223	1102 x 715 x 293
Set (WxHxD) (w/o stand)	780 x 482 x 107	971 x 582 x 118	1102 x 658 x 126.5	971 x 582 x 118	1102 x 658 x 126.5
Packing (WxHxD)	898 x 600 x 262	1108 x 700 x 280	1248 x 824 x 304	1108 x 700 x 280	1248 x 824 x 304
Weight Net (kg)	17	23.5	28	23.5	28
Weight Gross inc packaging (kg)	20	29.5	33	29.5	33
Warranty	3 Year	3 Year	3 Year	3 Year	3 Year
Stand	Optional stand	Optional stand	Optional stand	Optional stand	Optional stand

Plasma

PPM42M6SSX

PPM42M6HSX

PPM50M5HSX

PPM63H3QX

Display	Diagonal Size	42"	42"	50"	63"	
	Aspect Ratio	16:9	16:9	16:9	16:9	
	Resolution	852 x 480	1024 x 768	1366 x 768	1366 x 768	
	Pixel Pitch	1.095 x 1.110	0.912 x 0.693	0.81 x 0.81	1.02 x 1.02	
	Brightness	1,500cd/m ²	1,300cd/m ²	1,300cd/m ²	1,000cd/m ²	
	Contrast	10,000:1	10,000:1	10,000:1	3000:1	
	Grey Scale	12Bit	12Bit	12Bit	8Bit	
	Number of Colours	68.7Billion	68.7Billion	68.7Billion	16.7Million	
	Power	Power Supply	100 ~ 250V (50/60Hz)	100 ~ 250V (50/60Hz)	100 ~ 250V (50/60Hz)	100 ~ 250V (50/60Hz)
		Power Consumption	290 Watts	370 Watts	390 Watts	630 Watts
Dimension/Weight	Set (WxHxD)	1027 x 630.5 x 96.5 mm 40.43 x 24.82 x 3.76 inches	1027 x 630.5 x 96.5 mm 40.43 x 24.82 x 3.76 inches	1204.6 x 724.1 x 97 mm 47.43 x 28.5 x 3.82 inches	1503.4 x 893.8 x 89mm 59.19 x 35.19 x 3.5 inches	
	Weight (Set)	34.5 Kg (76.05 Lbs)	34.5 Kg (76.05 Lbs)	46.5 Kg (102.5 Lbs)	69Kg (152.1 Lbs)	
	Cabinet Colour	Grey	Grey	Grey	Grey	
	Pictures	Scan System	Progressive Scan	Progressive Scan	Progressive Scan	Progressive Scan
Colour system		Multi (PAL/SECAM/NTSC3.58/NTSC4.43)	Multi (PAL/SECAM/NTSC3.58/NTSC4.43)	Multi (PAL/SECAM/NTSC3.58/NTSC4.43)	Multi(PAL / SECAM / NTSC3.58 / NTSC4.43)	
Digital Comb Filter		3D Comb Filter	3D Comb Filter	3D Comb Filter	4H Comb filter	
Colour Tone		Normal/Cool1/Cool2/Warm1/Warm2 (Custom/Cool/Normal/Warm: RGB(PC) Mode; Cool/Normal/Warm: DVI Mode)	Normal/Cool1/Cool2/Warm1/Warm2 (Custom/Cool/Normal/Warm: RGB(PC) Mode; Cool/Normal/Warm: DVI Mode)	Normal/Cool1/Cool2/Warm1/Warm2 (Custom/Cool/Normal/Warm: RGB(PC) Mode; Cool/Normal/Warm: DVI Mode)	Normal/Cool1/Cool2/Warm1/Warm2	
Picture Mode		Dynamics, Standard, Movie, Custom (RGB (PC)/DVI: Entertain/Internet/Text/Custom)	Dynamics, Standard, Movie, Custom (RGB (PC)/DVI: Entertain/Internet/Text/Custom)	Dynamics, Standard, Movie, Custom (RGB (PC)/DVI: Entertain/Internet/Text/Custom)	Custom, Dynamics, Standard, Movie (PC: Custom,high, middle, low)	
Screen Size Mode		16:9, zoom1, zoom2,14:9, 4:3, Panorama	16:9, zoom1, zoom2,14:9, 4:3, Panorama	16:9, zoom1, zoom2,14:9, 4:3, Panorama	Wide, zoom1, zoom2,14.9, Normal	
OSD		English, French, German, Italian, Spanish, Portuguese, Chinese, Korean, Russian, Swedish	English, French, German, Italian, Spanish, Portuguese, Chinese, Korean, Russian, Swedish	English, French, German, Italian, Spanish, Portuguese, Chinese, Korean, Russian, Swedish	English, German, French, Italian, Spanish, Portuguese	
VESA Mounting Hole		VESA Standard Mounting (600mm x 400mm)	VESA Standard Mounting (600mm x 400mm)	VESA Standard Mounting (600mm x 400mm)	Optional Bracket	
Input Terminal		Composite Video	1 (RCA)	1 (RCA)	1 (RCA)	1 (RCA)
		S-Video	1 (S-Video)	1 (S-Video)	1 (S-Video)	1 (S-Video)
	Component1	1 (RCA [Y/Pb/Pr])	1 (RCA [Y/Pb/Pr])	1 (RCA [Y/Pb/Pr])	1 (RCA [Y/Pb/Pr])	
	RGB 1 (PC 1)	1 (D-sub 15pin)	1 (D-sub 15pin)	1 (D-sub 15pin)	1 (BNC [Y/Pb/Pr])	
	RGB 2 (PC 2)	1 (BNC [RGBHV])	1 (BNC [RGBHV])	1 (BNC [RGBHV])	1 (D-sub 15pin)	
	DVI	1 (29pin DVI)	1 (29pin DVI)	1 (29pin DVI)	1 (29pin DVI)	
	RS-232C	1 (D-sub 9pin)	1 (D-sub 9pin)	1 (D-sub 9pin)	1 (mini jack)	
	Audio	2 mini jack (for DVI & D-sub 15pin), 2 RCA(L/R) (for Component & Composite)	2 mini jack (for DVI & D-sub 15pin), 2 RCA(L/R) (for Component & Composite)	2 mini jack (for DVI & D-sub 15pin), 2 RCA(L/R) (for Component & Composite)	1 x mini jack, 2 x RCA	
Output Terminal	Composite Video	1 (RCA)	1 (RCA)	1 (RCA)	-	
	RGB 1 (PC 1)	1 (D-sub 15pin)	1 (D-sub 15pin)	1 (D-sub 15pin)	1 (D-sub 15pin)	
	RS-232C	1 (D-sub 9pin)	1 (D-sub 9pin)	1 (D-sub 9pin)	1 (D-sub 9pin)	
	Audio	1 RCA (L/R) (for Composite Out)	1 RCA (L/R) (for Composite Out)	1 RCA (L/R) (for Composite Out)	-	
	Speaker	External Speaker Jack (L/R), 10W x 2	External Speaker Jack (L/R), 10W x 2	External Speaker Jack (L/R), 10W x 2	External Speaker (L/R), 10W x 2	
Operation Condition	Temperature	0 ~ 40 °C	0 ~ 40 °C	0 ~ 40 °C	0 ~ 40 °C	
	Humidity	20 ~ 80 %	20 ~ 80 %	20 ~ 80 %	20 ~ 80 %	
	Altitude	700 hps (0m) ~ 1,114 hps (3,000m)	700 hps (0m) ~ 1,114 hps (3,000m)	700 hps (0m) ~ 1,114 hps (3,000m)	700 hps (0m) ~ 1,114 hps (3,000m)	
	Supplied Accessories	Tabletop Stand 2pcs, Remote control (Batteries included), Power Cord MDC S/W, PC Cable, Owner's Instruction	Tabletop Stand 2pcs, Remote control (Batteries included), Power Cord MDC S/W, PC Cable, Owner's Instruction	Tabletop Stand 2pcs, Remote control (Batteries included), Power Cord MDC S/W, PC Cable, Owner's Instruction	Remote control(Batteries included), Power Cord, Speaker wires, MDC S/W, Pivot S/W, PC Cable, MDC Cable, Owner's Instruction	
Optional Accessories	Wall Mount	Yes	Yes	Yes	Yes	
	Stand	-	-	-	-	
	Speaker	Yes	Yes	Yes	Yes	
	Warranty	2 Years	2 Years	2 Years	2 Years	



Samsung Electronics (UK) Ltd,
Samsung House, 1000 Hillswood Drive
Chertsey, Surrey KT16 0PS

Tel: 01932 455000 Fax: 01932 875030
www.samsung.com/uk

Free Manuals Download Website

<http://myh66.com>

<http://usermanuals.us>

<http://www.somanuals.com>

<http://www.4manuals.cc>

<http://www.manual-lib.com>

<http://www.404manual.com>

<http://www.luxmanual.com>

<http://aubethermostatmanual.com>

Golf course search by state

<http://golfingnear.com>

Email search by domain

<http://emailbydomain.com>

Auto manuals search

<http://auto.somanuals.com>

TV manuals search

<http://tv.somanuals.com>