

Samsung SRD Series Installation Guide

EOS Australia PTY LTD

Samsung SRD Series

EOS Australia PTY LTD

by Andrew Vo-Nguyen

This guide is designed for installers as a quick guide and a checklist of what should be configured on a DVR on installation. It goes through the most important topics to ensure all configurations meet the end user's expectations and performs at it's maximum capacity.

Table of Contents

| | |
|--|-----------|
| Part I DVR Configuration | 5 |
| 1 Naming Cameras..... | 5 |
| 2 Date & Time..... | 6 |
| 3 User Management..... | 7 |
| 4 Harddrive Management..... | 9 |
| Part II Recording Configuration | 11 |
| 1 Recording Schedule..... | 11 |
| 2 Event Record Duration..... | 13 |
| 3 Recording Quality & Resolution..... | 14 |
| 4 Motion Recording..... | 15 |
| Part III Network Configuration | 17 |
| 1 IP Settings..... | 17 |
| 2 Port Numbers..... | 18 |
| 3 Live Transfer..... | 19 |
| 4 Smart Phone Connection..... | 20 |
| Part IV Configurations | 22 |
| 1 Updating Firmware..... | 22 |
| 2 Loading/Saving Configurations..... | 23 |
| Part V Troubleshooting | 25 |

Part



1 DVR Configuration

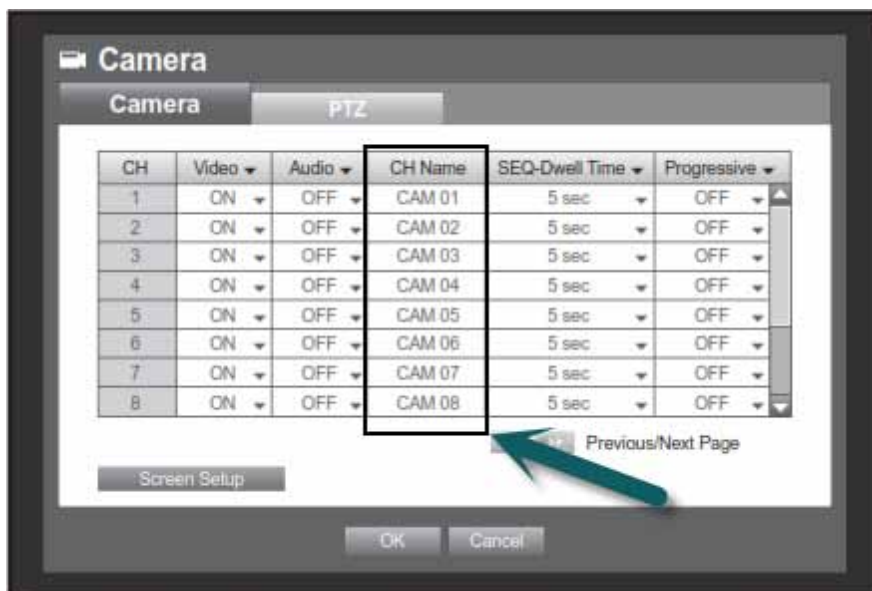
The following DVR configurations should be checked and configured on installation of any DVR onto any site. Settings may vary depending on how the customer wants the DVR configured.

1.1 Naming Cameras

Go to [Menu] > [Device] > [Cameras].

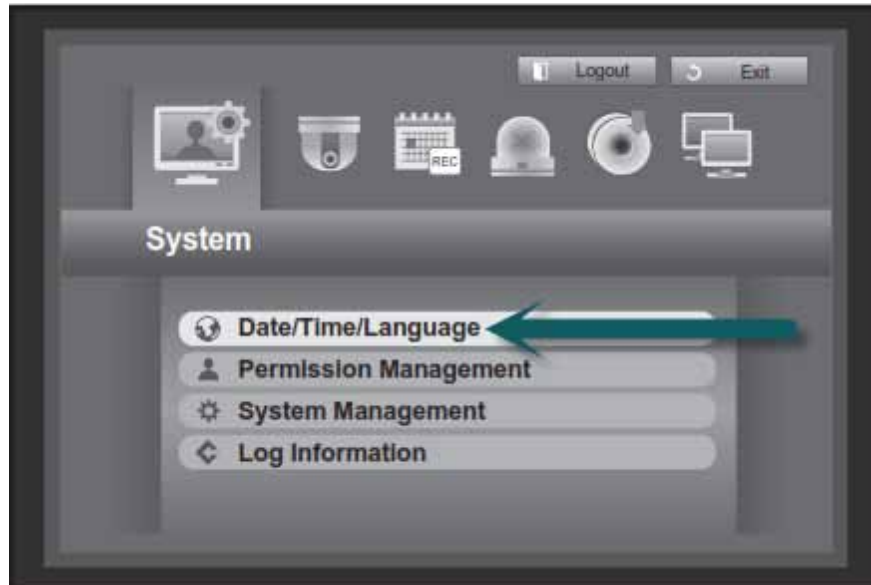


Double click each camera to change the name.

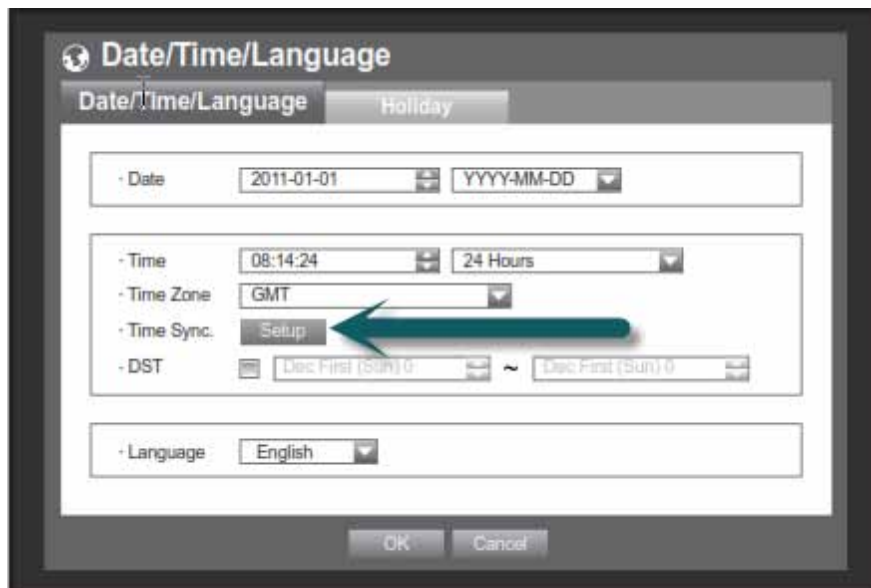


1.2 Date & Time

Go to [Menu] > [System] > [Date/Time/Language]

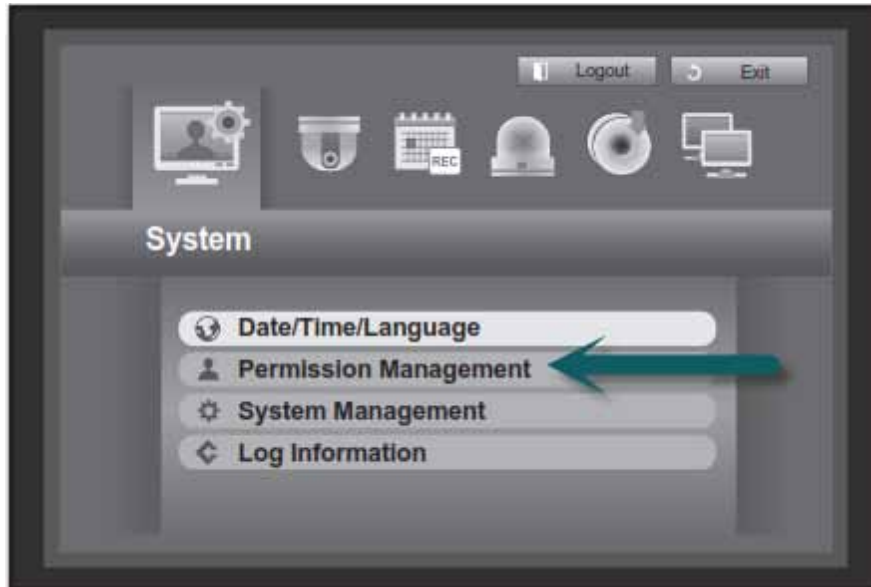


Time and Date should always be checked to ensure all recordings are synchronized with real time. If your DVR is connected to the internet you can Sync to a Time Server online.

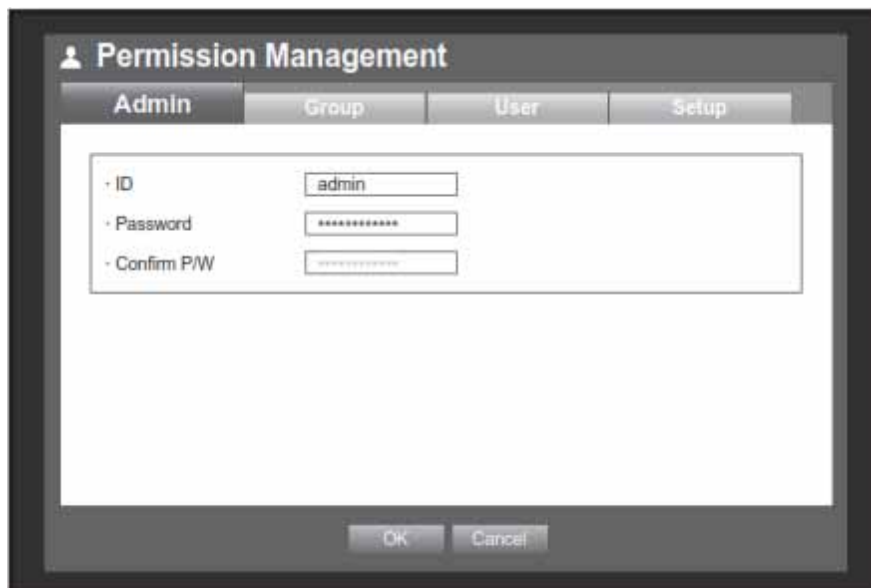


1.3 User Management

Go to [Menu] > [System] > [Permission Management]



The default 'admin' password is '4321'. This can be changed as a master password or installer password. It is a good idea to keep the 'admin' password for the installer only, and create users for the end user. Only 1 admin user can be logged in locally or remotely into the DVR at any given time. Create extra users for simultaneous logins.



You must 'Add' a group with permission policies before adding a 'User'. This is found under the [Group] tab.



Once a group has been added, go to the [User] tab to add a user.

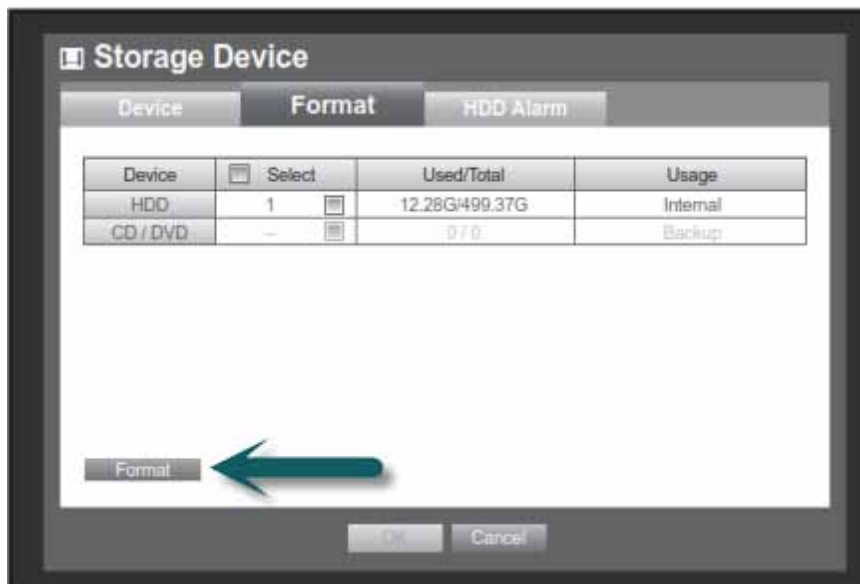


1.4 Harddrive Management

Go to [Menu] > [Device] > [Storage Device]



Go to the [Format] tab to view how much storage is used on each Harddrive. Also check the status of any CD/DVD or USB device.



Part



2 Recording Configuration

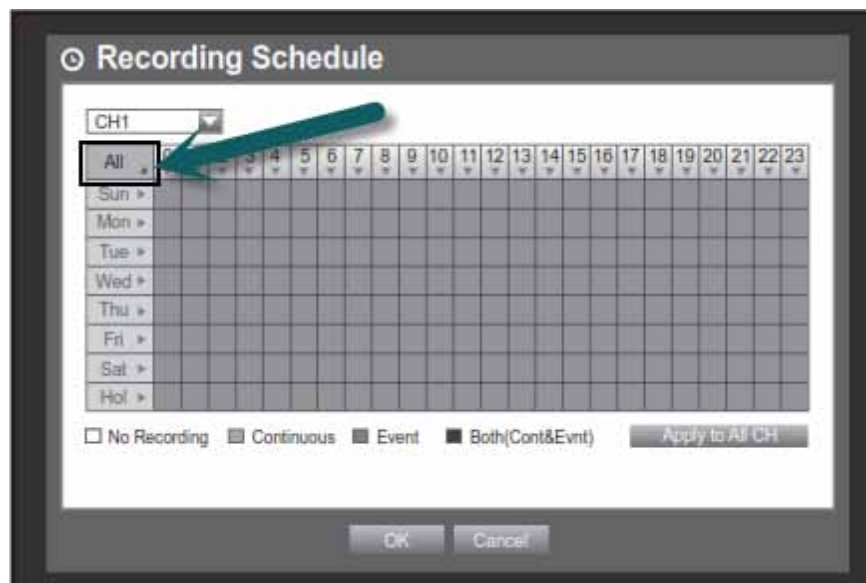
The following recording configurations should be checked and configured on installation of any DVR onto any site. Settings may vary depending on how the customer wants the DVR configured.

2.1 Recording Schedule

Go to [Menu] > [Record] > [Recording Schedule]



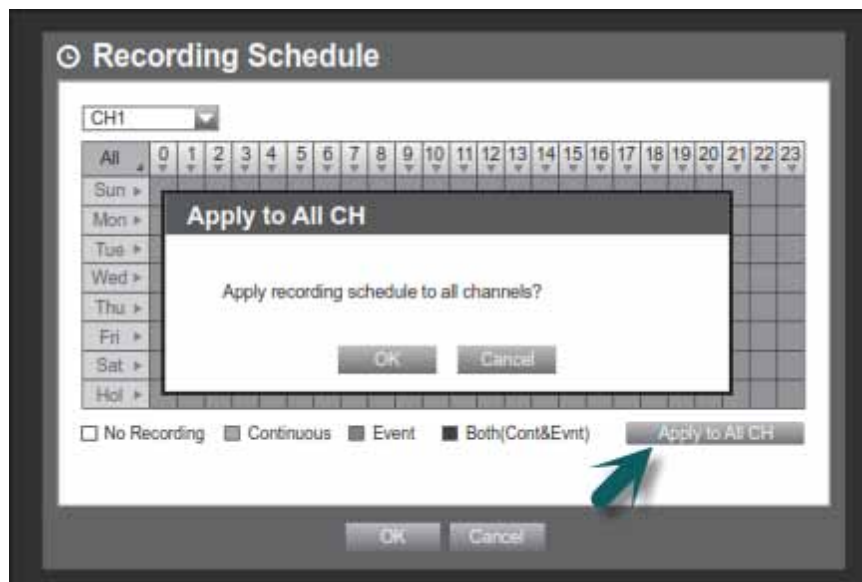
Right click anywhere on the table to select your Recording Type (No Recording / Continuous , Event, Both). Left click and drag anywhere on the table to change the schedule to your selected Recording Type. Alternatively, press the 'All' square on the top left corner of the table to change the whole schedule to your Recording Type.



Below are the Recording Type colour codes for the Recording Schedule.

| Recording Color Tags | | |
|----------------------|----------------|-----------------------------------|
| Color | Function | Description |
| White | No Recording | No schedule / event recording |
| Orange | Continuous | Scheduled recording only |
| Blue | Event | Event recording only |
| Green | Both(Cont&Evt) | Both scheduled / event recordings |

The below Recording Schedule is only for Camera 1, press 'Apply to All CH' to apply to all channels.

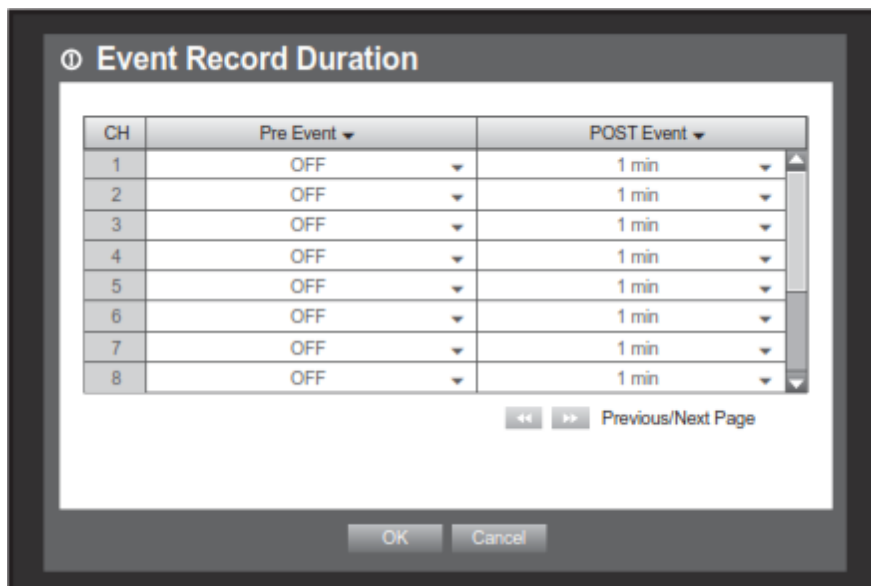


2.2 Event Record Duration

Go to [Menu] > [Record] > [Event Record Duration]



Configure the buffer time before and after a motion event occurs.



2.3 Recording Quality & Resolution

Go to [Menu] > [Record] > [REC Quality & Resolution]



There are 2 tabs at the top, [Standard] tab relates to Continuous recording and [Event] tab relates to Motion recording.

Depending on which DVR you have, the Frame rates and Resolutions may vary.



| Name | Resolution | Description |
|--------|---------------------------------|--|
| CIF(S) | NTSC: 352 X 240, PAL: 352 X 288 | Samples each half of horizontal and vertical screen. |
| 2CFM) | NTSC: 704 X 240, PAL: 704 X 288 | Samples half of the horizontal screen. |
| 4CF(L) | NTSC: 704 X 480, PAL: 704 X 576 | Samples original screen size. |

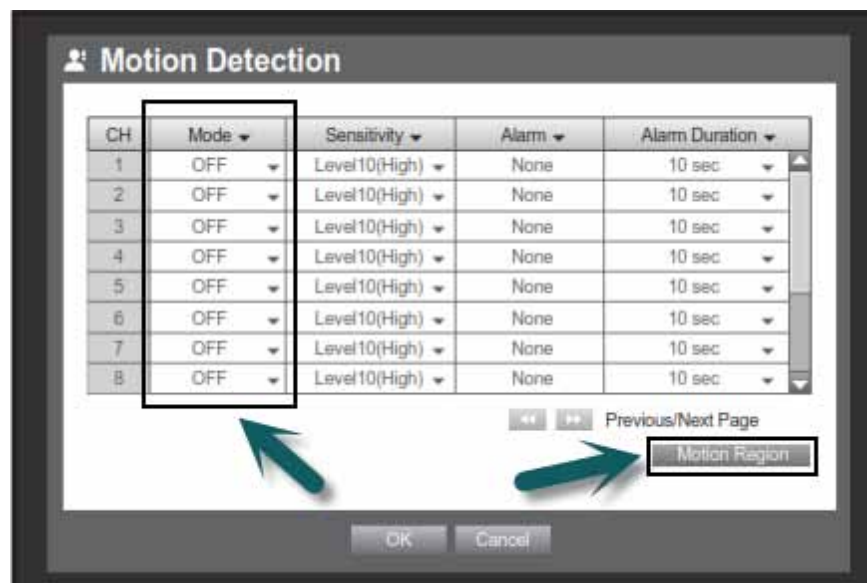
2.4 Motion Recording

Go to [Menu] > [Event] > [Motion Detection]



In order for your DVR to detect Motion as an Event, make sure 'Mode' is set to 'ON' for each channel (See below).

Also click on 'Motion Region' to mask and exclude particular areas from Motion Detection.



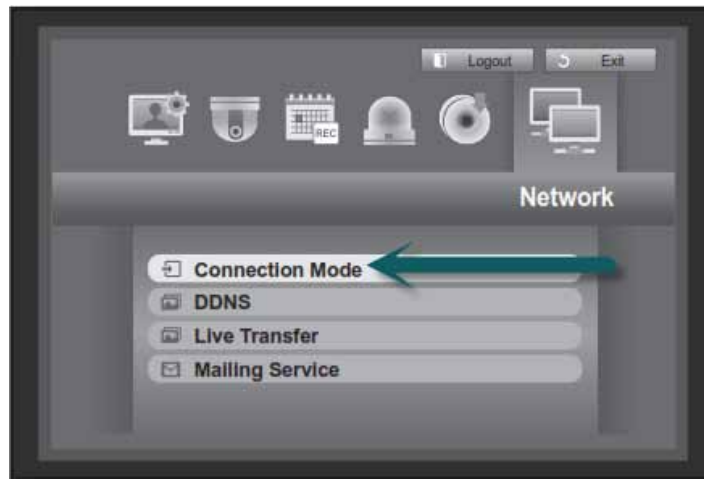
Part



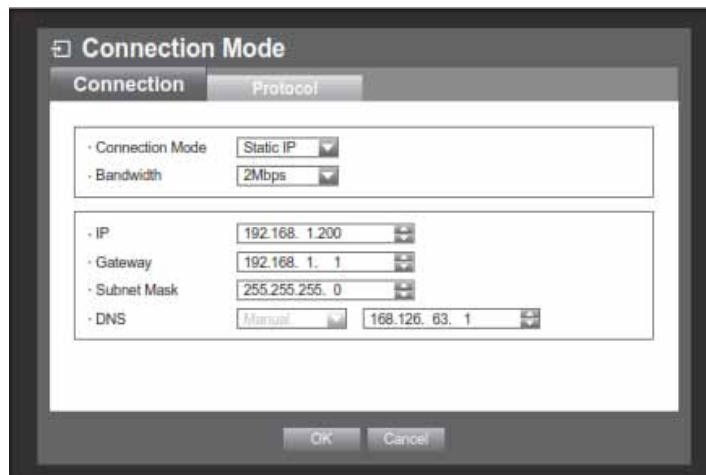
3 Network Configuration

3.1 IP Settings

Go to [Menu] > [Network] > [Connection Mode]



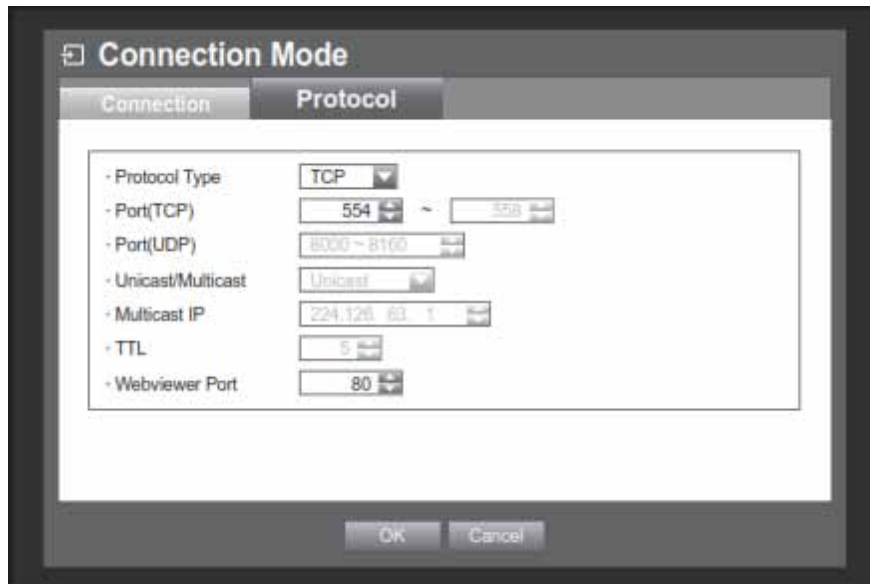
Under the [Connection] tab, fill out the network details



| | |
|------------------|--|
| Connection Mode: | Select 'Static IP' to enter the DVR's local IP Address. |
| Bandwidth: | This is the maximum bandwidth the DVR can throughput. |
| IP: | The Local IP address of the DVR. |
| Gateway: | The Router's IP Address (only used for accessing the internet). |
| Subnet Mask: | The Subnet Mask of the network. |
| DNS: | The DNS address of a DNS Server on the network (If there is no DNS Server, use the Router's IP). |

3.2 Port Numbers

Go to [Menu] > [Network] > [Connection Mode] > [Protocol] tab



The default ports for an SRD DVR are:

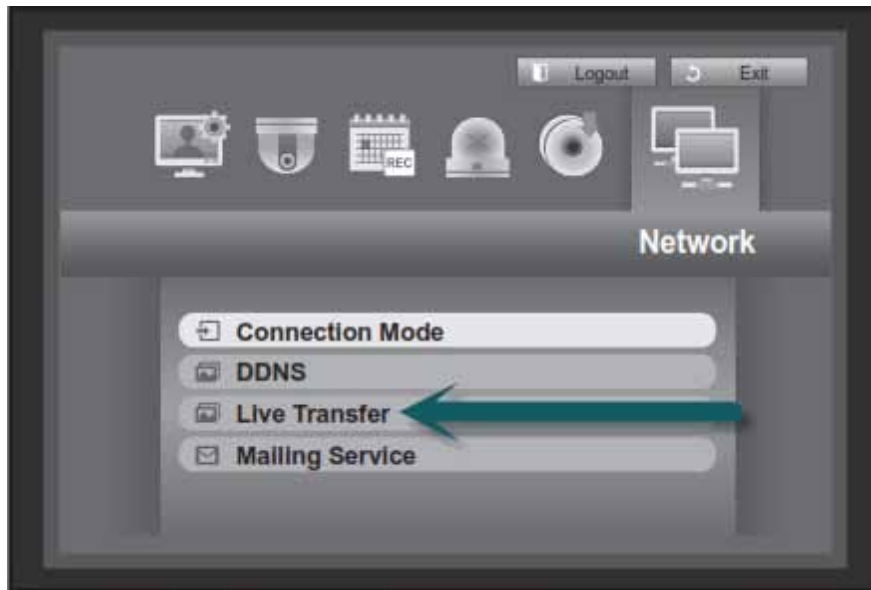
TCP: 554, 555, 556, 557

iPhone: 558 (Is always the last port number in the sequence)

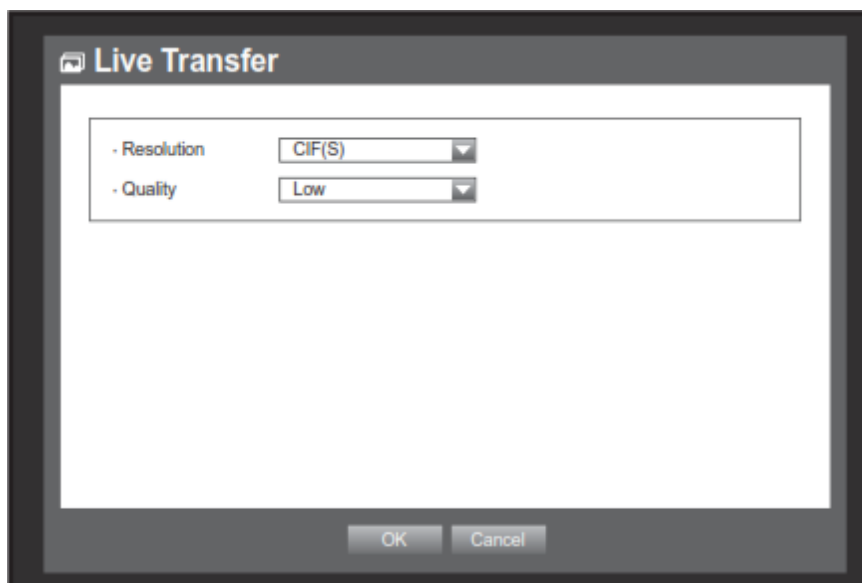
Webviewer Port: 80

3.3 Live Transfer

Go to [Menu] > [Network] > [Live Transfer]



The SRD Series DVR has the ability to stream a different Resolution and Quality over the network. This ensures that the network stream can stream quicker rather than streaming the Recording resolution.



3.4 Smart Phone Connection

The Samsung SRD Series is compatible with iPhone, iPad and all Android devices. The iPolis Mobile app gives you the ability to View your cameras live, Playback your cameras, and also Control the Pan Tilt Zoom function.

Search for keyword 'iPolis' in the App Store or Android Market, or run a QR Scan on below codes.

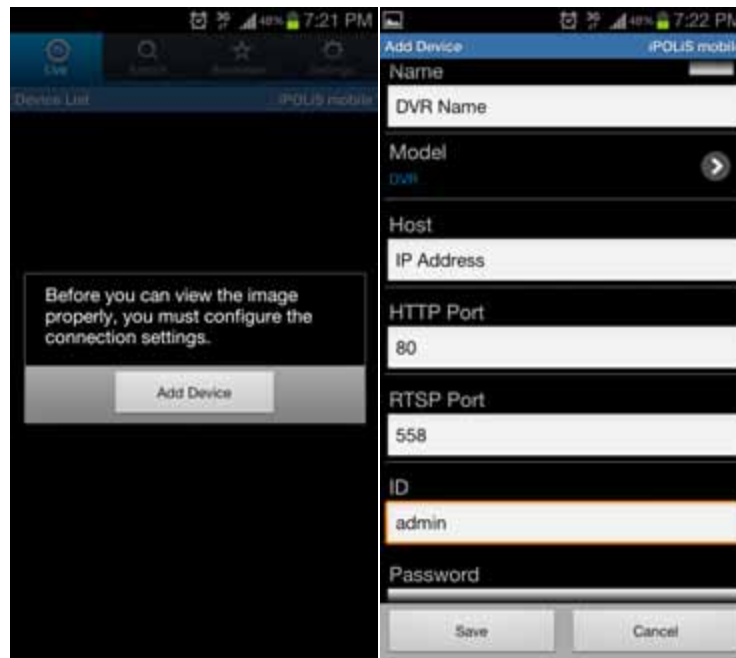
Download iPolis for iPhone



Download iPolis for Android



Once downloading the app and installing it, you will need to 'Add' your DVR as a device.



It is important that in the RTSP Port field, you enter the last Port Number of the TCP Port Sequence (default 554-558).

If you are connecting locally make sure you are connected to the WiFi of the same network as the DVR. If you are connecting externally through the internet, make sure;

- Your phone has an internet connection that is not on the same network as the DVR.
- You have Port Forwarded ports 554, 555, 556, 557, 558 and 80 on the router that is connected to your DVR.
- You have the latest Firmware on your DVR and the latest app on your Smart Phone.

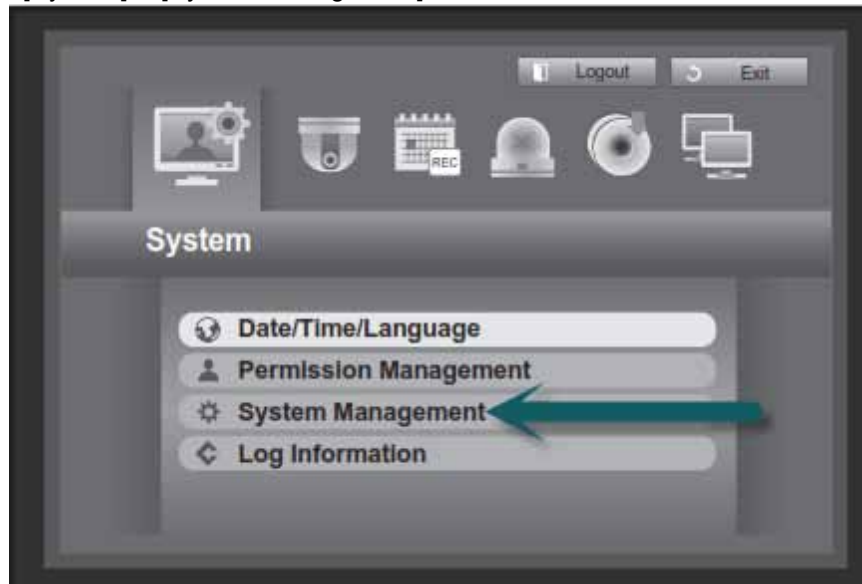
Part



4 Configurations

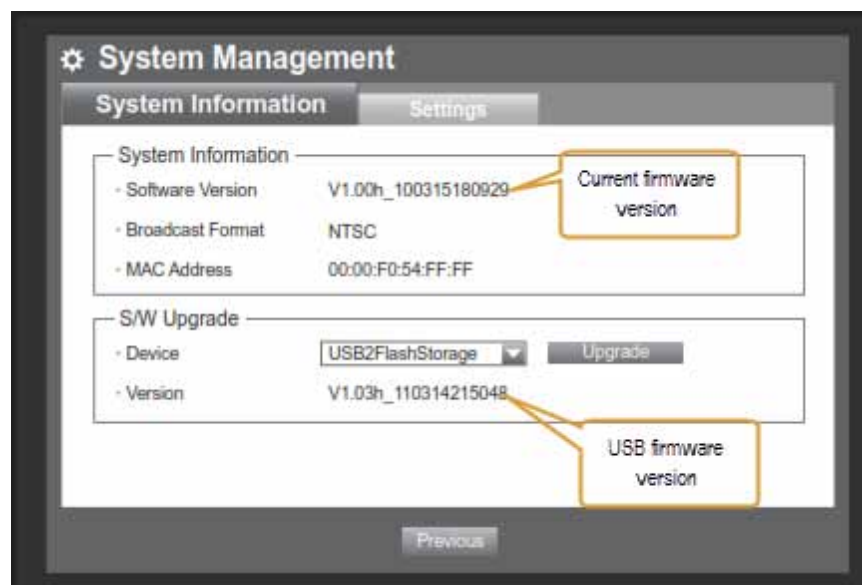
4.1 Updating Firmware

Go to [Menu] > [System] > [System Management]



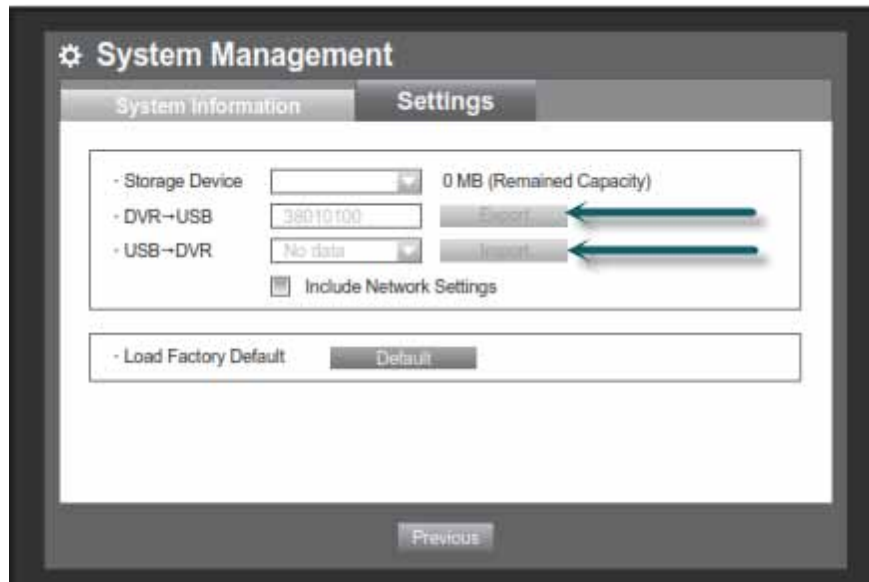
To update your DVR's firmware, you need to download the latest firmware file from <http://www.samsungcctv.com/>. Once you download the firmware file (.zip file), you need to unzip the file and place it on the root directory of your USB stick (.img file).

Press the 'Upgrade' button to load the firmware file from your USB stick.



4.2 Loading/Saving Configurations

The SRD Series DVR has the ability Load or Save Configuration files of the same model DVR to save time configuring multiple DVRs.



The settings configuration file is saved and loaded from a USB stick. When you save a setting, it is saved in a folder on the USB called 'detroit'.

Part



5 Troubleshooting

1. No cameras are showing on the screen even though they are plugged in
Check [Menu] > [Devices] > [Cameras] and see if any cameras are set to 'Covert'.
2. The cameras are showing live but no recording is present in search mode
 - a) Check [Menu] > [Recording] > [Recording Schedule] to see if the cameras are set to 'No Recording'.
 - b) Check [Menu] > [Event] > [Motion Detection] to see if 'Motion Detection' is turned on and if the motion area has been masked out.
 - c) Check [Menu] > [Devices] > [Storage Device] to see if you hard-drives have picked up.
3. The cameras are recording continuously even though the Recording Schedule is set to Motion
Manual record has been turned on by accident. Press the 'Record' button again on the machine to stop the manual record mode.
4. I can make a connection on the local LAN but not over the internet
Double check your port forwarding settings on the router, check <http://www.portforward.com/> for instruction on how to port forward on your router.
5. I keep getting kicked off when another user logs on
Ensure that you are not using the 'admin' user as only 1 admin user is permitted to be logged in at any given time. Create additional users to prevent this issue.
6. I cannot control my camera using the Coaxitron feature
Go to [Menu] > [Devices] > [Camera] > [PTZ] tab and make sure you change the Port option from RS-485 to Coaxial on your camera.
7. The DVR is in a constant rebooting loop
The hard-drive may have bad sectors, replace the hard-drive.
8. The admin password has been changed but the user has forgotten the password
Hold buttons [Mode] + [PTZ] on the front panel of the DVR for 15 seconds and it will ask you to factory default the machine. All settings will be wiped out.
9. I can see my cameras over the network but it is slow
Go to [Menu] > [Network] > [Live Transfer] to change the dual stream settings. Lower the resolution and quality for faster speeds. Also run a speed test on the network to check the upload speed. A sufficient upload speed would be 0.5Mb/s or higher.

10. The hard-drive is full but is not cycling

Go to [Menu] > [Record] > [Record Option] and check if overwrite mode is on.

11. The live screen does not show my cameras, it shows a Samsung wallpaper

Go to [Menu] > [System] > [Permission Management] > [Setup] tab to see if the Restricted Access is ticked on 'Live View'

12. The live screen keeps asking me for a password

The DVR will automatically log you out after 3 minutes, to turn 'Auto-Logout' off, go to:

Go to [Menu] > [System] > [Permission Management] > [Setup] tab and turn 'Auto-Logout' option off.

13. Where can I download latest firmware files and manuals

<http://www.samsungcctv.com/>

Free Manuals Download Website

<http://myh66.com>

<http://usermanuals.us>

<http://www.somanuals.com>

<http://www.4manuals.cc>

<http://www.manual-lib.com>

<http://www.404manual.com>

<http://www.luxmanual.com>

<http://aubethermostatmanual.com>

Golf course search by state

<http://golfingnear.com>

Email search by domain

<http://emailbydomain.com>

Auto manuals search

<http://auto.somanuals.com>

TV manuals search

<http://tv.somanuals.com>