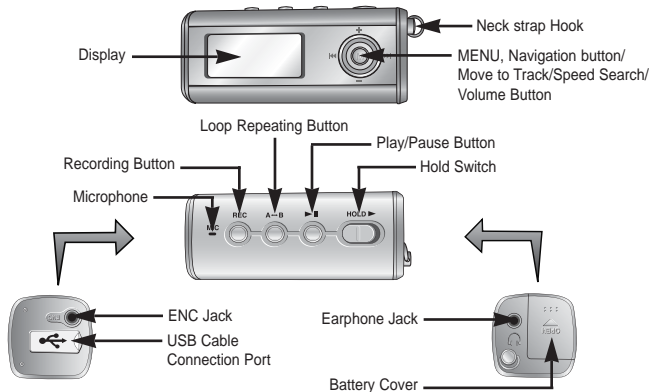


YP-T5 Quick Guide

Location of Controls



Turning Power On and Off

- Power On : Press the ►|| button to turn on the power.
- Power Off : Press and hold the ►|| button to turn off the power.

Pausing Music

Press the ►|| button to pause playback.

- If no buttons are pressed within 10 seconds(changes depending on settings), the yepp automatically powers off.
- While in Pause mode, briefly press ►|| again to resume playback.

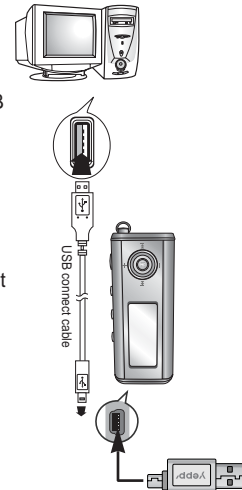
Playing Music

- Press the ►|| button.
- Playback starts.

Connecting the USB cable

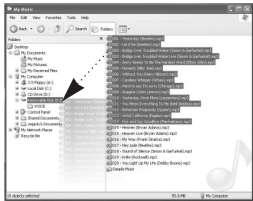
► Before connecting the yepp to PC, make sure to install USB driver.

- 1 Connect a USB cable to the USB port on the computer.
- 2 Connect the other end of a USB cable to the USB cable connection port on the bottom of the yepp, and press the ►|| button on the main unit.
 - If you disconnect the USB cable from your PC while implementing a command or initializing during USB driver installation, your PC may not function correctly.
- 3 USB driver is installed with a message saying that it is searching for a new device. You may not see the display screen during installation. Go to the device manager to check that installation has been successfully completed.
- 4 Upon installation of the USB driver "SAMSUNG YP-T5" will appear in the [Start] → [Settings] → [Control Panel] → [System Properties] → [Device Manager].



Downloading/Uploading files

- 1 Connect the yepp to your PC and turn it on.
- 2 Open Windows Explorer on PC.
- 3 Select the file to save and drag-and-drop it into the removable disk icon.
(In numerical, alphabetical order)



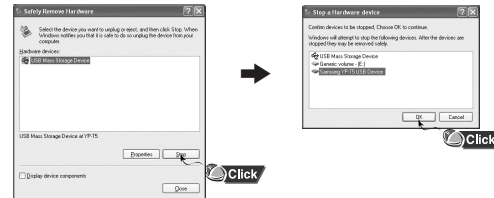
Notice :

- The "WRITING/READING" message will appear during file download or upload. Disconnecting the USB cable while "WRITING/READING" is displayed may cause malfunction of the unit.
- The order of music files displayed in Windows Explorer may differ from the play order on your device.

Disconnecting the USB cable

After completing the file transmission, you must disconnect the cable in the following way:

- 1 Double-click on the green arrow in the taskbar on the bottom right of the window.
- 2 When the [Stop a Hardware device] message appears, press the [OK] button and disconnect the USB cable.



Note :

- The green arrow is not displayed on the Task Bar in Windows 98 system. If "READY" message is shown in Display window, please disconnect the USB cable.

Free Manuals Download Website

<http://myh66.com>

<http://usermanuals.us>

<http://www.somanuals.com>

<http://www.4manuals.cc>

<http://www.manual-lib.com>

<http://www.404manual.com>

<http://www.luxmanual.com>

<http://aubethermostatmanual.com>

Golf course search by state

<http://golfingnear.com>

Email search by domain

<http://emailbydomain.com>

Auto manuals search

<http://auto.somanuals.com>

TV manuals search

<http://tv.somanuals.com>