

SAMSUNG



YP-K3J

For Your Safety

Read this manual carefully to ensure proper use of the player and to avoid any danger or physical damage.



WARNING

Failing to heed the player instructions may cause serious injury.

Product Use

Improper use can result in explosion, fire or electric shock.



Do not disassemble, repair or modify this player on your own.



Do not get the player wet or drop it in water.
If the player gets wet, do not switch it on. Contact a Service Center.



Do not place the player in damp, dusty or sooty areas, as it could result in fire or electric shock.



Do not leave the player in areas above 35°C(95°F) (such as a sauna or inside a parked car).

During hot weather, the temperature inside a car may rise up to 80°C(176°F).

To avoid your hearing damage



Avoid using your player at high volume levels, as it may result in permanent hearing damage. If you experience ringing in your ears while using the earphone, remove the earphone immediately and lower the volume.

To avoid a risk of traffic accident

Do not use the earphones while you are driving a bicycle, automobile or motorcycle. It can cause a serious accident and furthermore, is prohibited by law in some areas.

Using the earphones while walking, in particular, on a crosswalk, can lead to a serious accident.

Take care not to tangle the earphone cable around your arms or neighboring objects while driving, working out or walking, as it could result in a car accident or other injuries.



CAUTION

Failure to follow all instructions lead to physical injuries or damage to the player.

Product Use

Management of Important Data



Be sure to back up important data.

Please be aware that we claim no responsibility for damage from data loss due to breakdown, repair or other causes.

Avoid malfunction



Do not cause excessive impact on the player by dropping it. Do not place heavy objects on top of the player.



Prevent any foreign particles or dust from entering into the player.

Avoid malfunction



Always use the accessories provided by or approved by Samsung.



Do not spray water on the player. Never clean the player with chemical substances such as benzene or thinner, as it may cause fire, electric shock or deteriorate the surface.



Do not place the player near magnetic objects, as it may cause a malfunction.

Contents

For Your Safety	2
Contents	4

Chapter 1. Preparation

Basic Information	6
Components	6
Screen Display Information	9
Button Functions	10
Charging the battery	12
Basic Use	13

Chapter 2. Loading Your Desired File

Loading Your Desired File	16
Installing Samsung Media Studio	16
Connecting to your PC	17
Adding Files/Folders in Samsung Media Studio	18
Transferring Files to the Player with Samsung Media Studio	20

Chapter 3. Multimedia function

Listening to Music	22
Listening to Music	22
Creating a Playlist Using Samsung Media Studio	26
To Play a Playlist	28
Using the Music Option Menu	29
Photo Viewing	31
Photo Viewing	31
Using the Photo Option Menu	32
Listening to FM Radio	33
Listening to FM Radio	33
Setting FM Presets	36
To Delete Presets	38
Setting FM Radio	39

Chapter 4. | Setting

Settings	40
Setting Display	40
Setting Time	42
Setting Language	44
Setting the System	45

Chapter 5. | Troubleshooting

Troubleshooting	47
------------------------------	----

Chapter 6. | Appendix

Menu Tree	49
Product Specifications	50

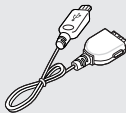
Checking the Accessories



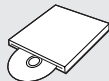
Player



Earphones



USB Cable

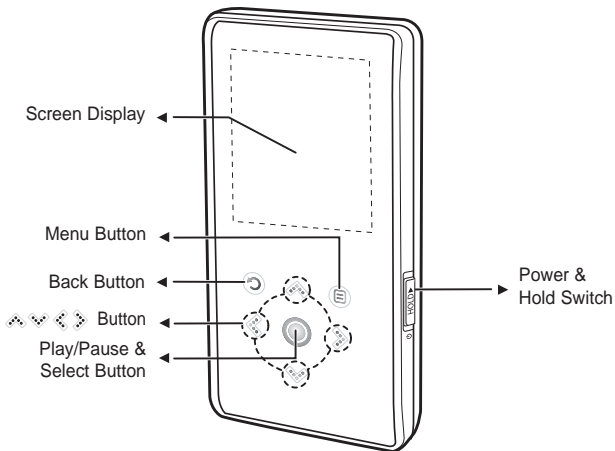


Installation CD

- Design of accessories is subject to change for the purpose of improvement, without notice.

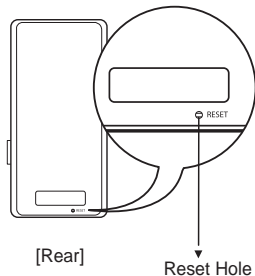
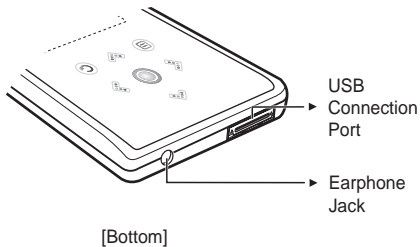
Front, Right Side

All buttons are 'Light-touch' buttons.



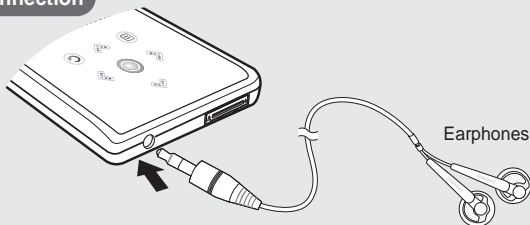
Components (Continued)

Bottom/Rear



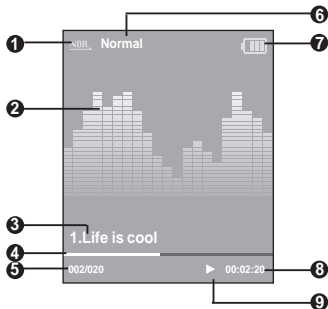
Earphone Connection

► Bottom



Screen Display Information

Music







- | | | | |
|---|---|---|------------------------|
| 1 | Play Mode Display | 6 | Sound Effect Display |
| 2 | Graphic Equalizer | 7 | Battery Status Display |
| 3 | Music Information | 8 | Play Time Display |
| 4 | Play Status Bar | 9 | Play/Pause Display |
| 5 | Current Music Number/
Total Number Display | | |



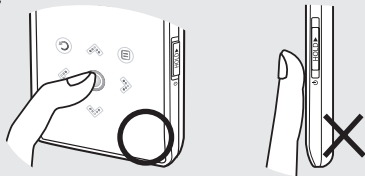
NOTE

- The screen pictures are for illustration purposes only. The actual screen may differ.

Button Functions

Buttons	Functions and Use
	<ul style="list-style-type: none"> ■ Slide and hold in the opposite direction of the arrow to turn the power on/off. ■ Slide in the arrow direction to lock the buttons.
	<ul style="list-style-type: none"> ■ Long tap to move to the main menu. ■ Short tap to move to the previous screen.
	<ul style="list-style-type: none"> ■ Moving up, down, left and right and Function Selection. <ul style="list-style-type: none"> ▲ ▼ Tap to move up or down by one selection. ◀ ▶ Tap to move left or right by one selection. ▲ ▼ Press and hold to move up or down continuously. ○ Short tap to select the play/pause and function, move to the next screen. ■ Search for a track and control volume while listening to music. <ul style="list-style-type: none"> ◀ Press and hold to scan to a point on the current track. Tap to move to the previous track or to play the current track from the start. ▶ Press and hold to scan to a point on the current track. Tap to move to the next track. ▲ ▼ Tap to reduce/increase the volume.
	<ul style="list-style-type: none"> ■ Tap to display the option menu.

*** Tap on touch screen with your fingertip.**

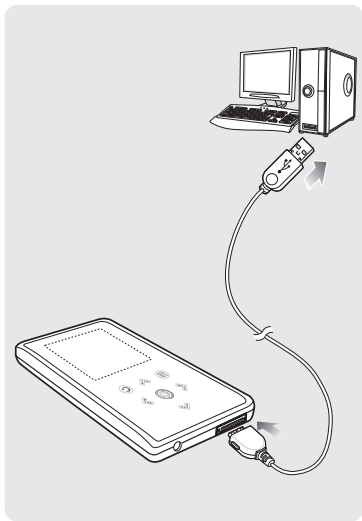



!
CAUTION

- Do not use any sharp object other than your fingers to operate the touch screen. Otherwise, touch screen may be damaged.
- Do not tap on the touch screen if your fingers are not clean.
- Do not tap on the touch screen with your gloves on. Otherwise, the button does not operate in any way.

Charging the battery

Fully charge the rechargeable battery before using the player for the first time or when it has not been used for a while.



1 Connect the USB cable to the USB port () on your PC.

2 Connect the other end of the USB cable to the USB Connection Port on the bottom of the player.

- When connected with the USB cable, it takes about 4 hours for the player to fully charge although this may vary depending on your PC environment.

Battery Use

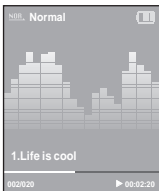
- Recharge and store within the temperature range of 5°C~35°C(40°F~95°F).
- Do not overcharge (longer than 12 hours). Excessive charging or discharging may shorten the battery's life.
- Battery life naturally shortens slowly over time.



NOTE

- If you are charging the player while it is connected to your Notebook, make sure the Notebook's battery is also fully charged.

Turning the Power On & Off



Turning the Power On

Slide and hold the [HOLD ▶] switch in the opposite direction of the arrow.

- Power is turned on.

Turning the Power Off

Slide and hold the [HOLD ▶] switch in the opposite direction of the arrow again.

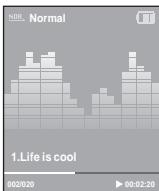
- Power is turned off.



NOTE

- Power is automatically turned off when none of the buttons have been tapped for a preset period of time (Default: 1 minute) in the pause mode. ▶ Page 42

Playing Music



1 Press and hold [⏪] to move to the main menu.

2 Tap [◀ ▶] to select <Music> and then tap [⏸].

- The Music Menu will appear.

3 Use [▲ ▼] and [⏸] to select a music file of your choice.

4 Tap [⏸].

- The music file will begin playing.



NOTE

- Tap [⏪] to move to the previous screen.
- Press and hold [⏪] to move to the main menu screen.

Basic Use (Continued)

Volume Control



Tap [🔊].

- You will see a volume control icon.
- Tap [🔊] to increase the volume or [🔇] to decrease it.

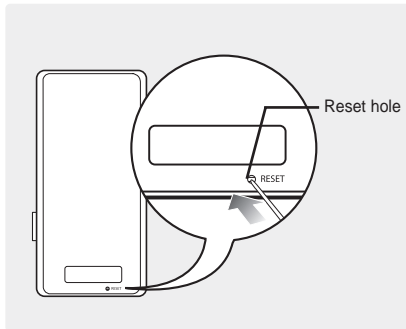
Lock Function



In Hold mode, all buttons are disabled. This function is useful when you are walking or jogging.

- 1** Slide the [HOLD ►] switch in the direction of the arrow.
- 2** Slide the [HOLD ►] switch in the opposite direction of the arrow to release the Lock function.

Reset Function



If a player malfunction occurs, you can re-initialize the system by pressing the Reset hole.

Press the Reset hole at the rear of the player with a pointed object such as a safety clip.

- The system will be initialized.
- Your settings and files will not be affected.

Installing Samsung Media Studio

Use Media Studio to transfer music files from your PC to the player.



If Media Studio is not installed automatically

CAUTION

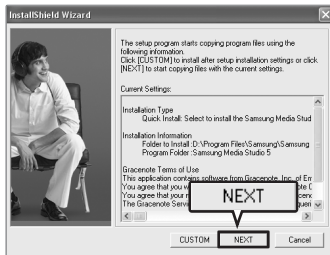
- Install the program on PCs running Windows XP after logging on with the Administrator account. Please refer to the PC user manual on how to log on with the Administrator account.

Before you start!


Insert the installation CD provided with the player into the CD-ROM drive.



1 Click <Install now>.



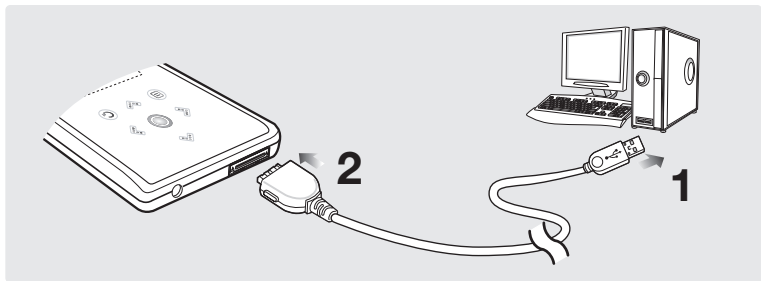
2 Click <NEXT>.


- Media Studio installation starts.
- An  icon is created on the desktop after installation is complete and Media Studio starts.

Connecting to your PC

Before you start!

Use the USB Cable provided when connecting the player to your PC.



- 1** Connect the USB cable to the USB port () on your PC.
- 2** Connect the other end of the USB cable to the USB Connection Port on the bottom of the player.

PC Requirements

The PC system must meet the following minimum specifications:

- Pentium 300MHz or higher
- DirectX 9.0 or higher
- 100MB of free hard disc space
- Windows Media Player 10.0 or higher
- Windows XP Service Pack 2 or higher
- USB Port 2.0
- CD Rom Drive (2X or higher)
- Resolution 1024 X 768 or higher

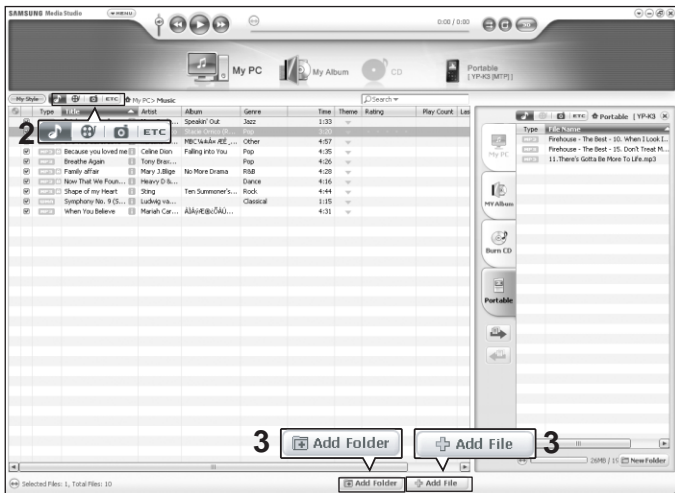


- If you connect the player through a USB hub, the connection may be unstable. Please connect the player to your PC directly.

- If you connect the player to your PC in the low battery condition, the player automatically checks

Adding Files/Folders in Samsung Media Studio

Media Studio enables you to select and organize files and folders in preparation for transfer to your player.



Please refer to Help for more information on how to use Media Studio.

- Click <MENU> → <Help> → <Help> from the menu at the top of the Media Studio program.




Before you start!

- Connect the player to your PC.
- Media Studio must be installed on your PC.

1 Media Studio will automatically start when the player is connected to your PC.

- If the program does not start automatically, double-click the Media Studio  icon on the desktop.

2 Click the desired file icon on the left side.

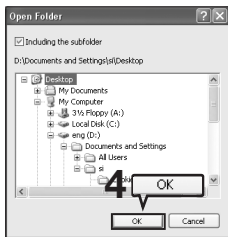
- Choose the file type you want to transfer by clicking on one of these icons.
 -  represents a music file and  represents a photo.
- Click  icon to display etc list. The ETC list includes file types (ex: TXT, XOV, etc) other than music and photo files.

To add folders**3 Click <Add Folder> on the bottom of Media Studio.**

- The Open Folder window will appear.

4 Select the folder to add and click <OK>.

- The files of the selected folder are added to the list on the left side the Media Studio Screen.

**To add files****3 Click <Add File> on the bottom of Media Studio.**

- The Open window will appear.

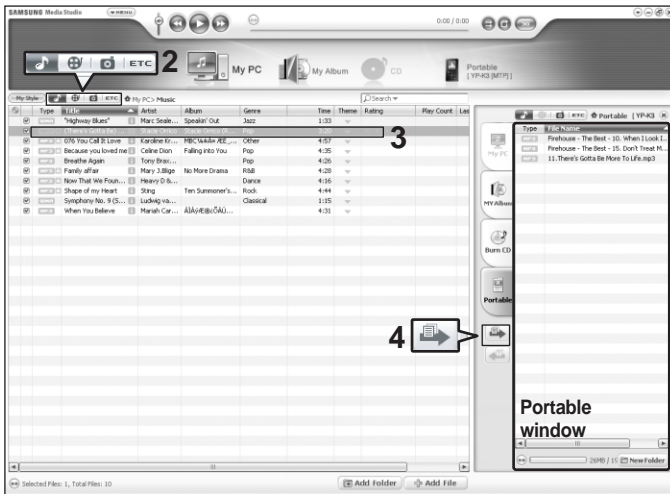
4 Select the files to add and click <Open>.

- The selected files are added to the list on the left side the Media Studio Screen.



Transferring Files to the Player with Samsung Media Studio

Perform the following steps to transfer files from your PC to the player.



NOTE

- Music recognition technology and related data are provided by Gracenote and Gracenote CDDB® Music Recognition ServiceSM.
- CDDB is a registered trademark of Gracenote. The Gracenote logo and logotype, the Gracenote CDDB logo and logotype, and the "Powered by Gracenote CDDB" logo are trademarks of Gracenote. Music Recognition Service and MRS are service marks of Gracenote.




Before you start!

- Connect the player to your PC.
 - Media Studio must be installed on your PC.
-

1 Media Studio will automatically start when the player is connected to your PC.

- If the program does not start automatically, double-click the Media Studio  icon on the desktop.

2 Click the desired file icon on the left side.

- Choose the file type you want to transfer by clicking on one of these icons.
 -  represents a music file and  represents a photo.
- Click  icon to display etc list. The ETC list includes file types (ex: TXT, XOV, etc) other than music and photo files.

3 Select the file to transfer in the left file list.

4 Click icon.

- The Selected file is transferred to the player.

**CAUTION**

- Do not disconnect the USB cable during file transfer. This may cause damage to the player or your PC.
-

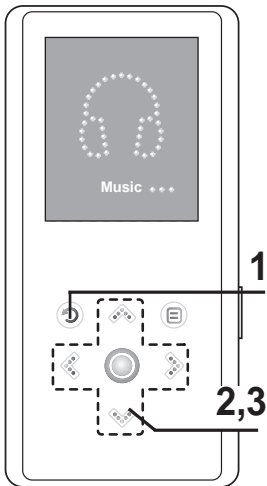
**NOTE**

- When transferring a photo file to the player using <Media Studio>, it is automatically converted into JPG format before transfer. The file size is automatically adjusted, too.
 - A photo file that is transferred to the player without using <Media Studio> can look different from the source on the screen of the player.
-

Listening to Music

Before you start!

Connect the earphones, then turn on the player, and check the battery.



E.g. Playing by Artist

1 Press and hold [] to move to the main menu.

2 Tap [ ] to select <Music> and then tap [].

- The Music Menu will appear.

Music Menu

- <Now Playing> : You can see the current song.
- <Artists> : To play by artist
- <Albums> : To play by album
- <Tracks> : To play in numeric or alphabetical order
- <Genres> : To play by genre
- <Playlists> : To play by Playlist

3 Tap [ ] to select <Artists> and then tap [].



NOTE

- The music files compatible with the player are MP3, and WMA .
- MP1 or MP2 files which only have a changed extension to MP3 may not play on the player.
- A file without an ID3 Tag is displayed as [Unknown].
- Files with an ID3 tag will automatically be organized on the player by Artists, Albums etc.
An ID3 tag is a hidden part of each music file and is used to categorize.

Download from www.Somanuals.com. All Manuals Search And Download.



4 Tap [] to select an artist, then tap [].

- The albums for the artist will appear.

5 Tap [] to select an album, then tap [].

- The music files for the selected album will appear.

6 Tap [] to select a music file to play, then tap [].

- The music will start playing.

Listening to Music (Continued)

To Pause

- 1 Tap [⏸] while the music is playing.**
 - The music playback will be paused.
- 2 Tap [⏪] again.**
 - The music will play from the point where it stopped.



NOTE ■ Power is automatically turned off when none of the buttons have been tapped for a preset period of time (Default: 1 minute) in the pause mode. ► Page 42

To search within a track

- 1 Press and hold [⏮] while the selected track is playing.**
 - It searches to the beginning or the end of the track.
- 2 Release the button at the point you want to start.**
 - It starts playing from the point you release the button.

To Play from the beginning of the current track

Tap [⏮] after 3 seconds of play.

- The current track starts playing from the beginning.

To play the previous/next track

Tap [⏮] within 3 seconds of play.

- The previous track will start playing.

Tap [⏭].

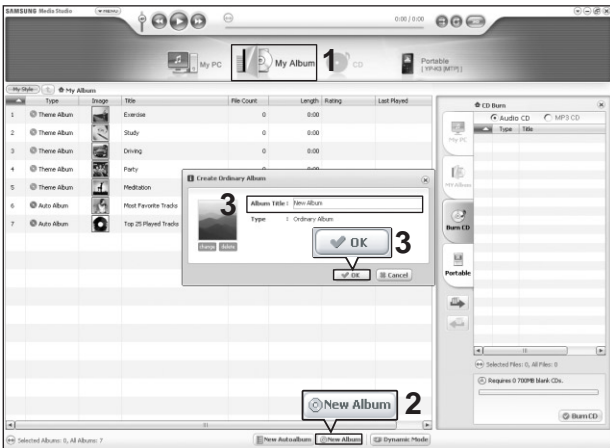
- The next track will start playing.



- When playing VBR files, the previous track may not play even if you tap [⏮] within 3 seconds of play.

Creating a Playlist Using Samsung Media Studio

A playlist is a list of your favorite songs.



1 Click <My Album> on the top of Media Studio.

- The <My Album> window appears.

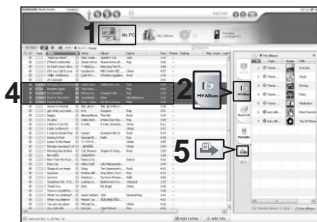
2 Click <New Album> on the bottom.


- The Creation window appears.

3 Type in the album title and click <OK>.

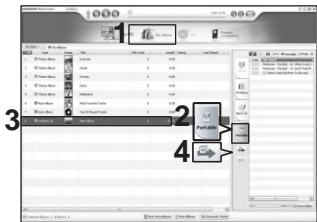
- A new album (playlist) will be created and stored in the My Album section of Media Studio. Download from [Www.Somanuals.com](http://www.Somanuals.com). All Manuals Search And Download.


Adding Music files to a Playlist



- 1** Click <My PC> on the top of Media Studio.
 - The <My PC> window appears.
- 2** Click <My Album> in the right corner of the window.
 - The Album window appears.
- 3** Double-click on a desired album in the right window.
- 4** Select files that you want to transfer in the <My PC> window.
- 5** Click  icon.
 - The selected files will be added to the album (playlist).

Exporting a Playlist to your Player Using Media Studio

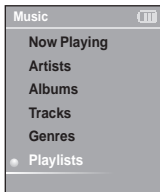











- 1** Click <My Album> on the top of Media Studio.
 - The <My Album> window appears.
- 2** Click <Portable> in the right corner of the window.
 - The <Portable> window appears.
- 3** Select a desired album in the <My Album> list.
- 4** Click  icon.
 - The selected album will be transferred to the player

To Play a Playlist

Before you start!

For more information, see pages 26–27 to see how to create and transfer playlists to your player.



- 1 Press and hold [] to move to the main menu.
- 2 Tap [] to select <Music> and then tap [].
 - The Music Menu will appear.
- 3 Tap [] to select <Playlists> and then tap [].
 - The Playlist(s) will appear.
 - If there is no playlist found, you will see a message of <No File> on the screen.
- 4 Tap [] to select the playlist of your choice, then tap [].
 - The music files saved in the selected playlist will appear.
- 5 Tap [] to select a music file to play, then tap [].
 - The music file will start playing.

Using the Music Option Menu

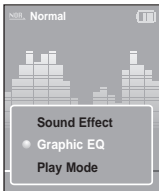
To select the sound effect

Different sound effects can be selected that enable you to enhance the music you are listening to.



- 1** Tap [] while listening to music.
 - The music option menu appears.
- 2** Tap [] to select <Sound Effect> and then tap [].
 - The sound effect menu appears.
- 3** Tap [] to select the desired sound effect and then tap [].
 - You can select either <Normal> <Vocal> <Bass Boost> <3D Sound> or <Concert Hall>.

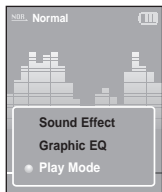
To select the graphic EQ display



- 1** Tap [] while listening to music.
 - The music option menu appears.
- 2** Tap [] to select <Graphic EQ> and then tap [].
 - The graphic equalizer menu appears.
- 3** Tap [] to select <On> or <Off> and then tap [].
 - <On>: The graphic equalizer will be displayed on the screen.
 - <Off>: The graphic equalizer will not be displayed on the screen.

Using the Music Option Menu (Continued)

To select the play mode



1 Tap [] while listening to music.

- The music option menu appears.

2 Tap [] to select <Play Mode> and then tap [].

- The play mode menu appears.

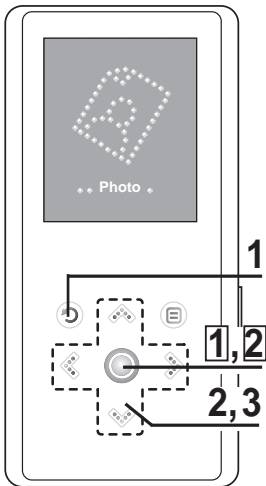
3 Tap [] to select the desired mode and then tap [].


- You can select either <Normal> <Repeat One> <Repeat> or <Shuffle>.
 - <Normal> : To play all the tracks in order one time.
 - <Repeat One> : To repeat one file.
 - <Repeat> : To repeat all files.
 - <Shuffle> : To play files at random.










Photo Viewing

Before you start!

See pages 20-21 to transfer Photo files to your player.




NOTE

- You will see thumbnail photos if the appropriate information is included in the file.
For a file with no information, you will see  instead.



- Press and hold [] to move to the main menu.
- Tap [ ] to select <Photo> and then tap [].
 - The Photo list will appear.
- Tap [   ] to select the photo file of your choice, then tap [].
 - The selected file will appear.
 - Large photos may take longer to display.

Slideshow Viewing

You can view your picture files in order as a Slideshow.

- Tap [] in Photo Viewing mode.
 - The slideshow will start.
- Tap [] to stop the slideshow.

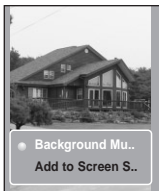
To view the previous / next photo

- Tap [ ].
- You can see the previous or next photo on the display.

Using the Photo Option Menu

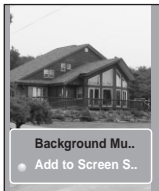
To listen to music while viewing your photo

You can listen to the song that you last played while viewing your photo.



- 1 Tap [] while viewing a photo.
 - The photo option menu appears.
- 2 Tap [] to select <Background Music On> or <Background Music Off>.
 - <Background Music On> : You can listen to the song that you last played while viewing your photo.
 - <Background Music Off> : No background music is played while viewing a photo.

To add a photo to the screen saver list



- 1 Select a photo file that you want to add to the screen saver list.
- 2 Tap [] while viewing a photo.
 - The photo option menu appears.
- 3 Tap [] to select <Add to Screen Saver> and then tap [].
 - The selected photo file is added to the screen saver list.



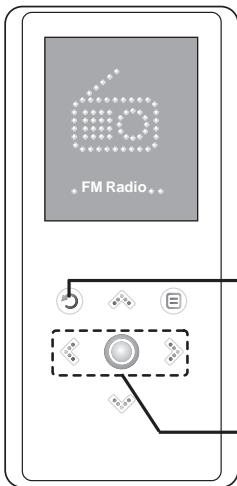
NOTE

- Select <Photo> from <Settings> → <Display> → <Screen Saver> and the selected photo is displayed on the screen as a screen saver. ► page 41
- If you set <Default Set>, the screen saver will be initialized to <Analog Clock>.

Listening to FM Radio

Before you start!

Connect the earphones, then turn on the player, and check the battery.




1 Press and hold [] to move to the main menu.

2 Tap [ ] to select <FM Radio> and then tap [].

- FM radio reception will start.

To use Mute function

Tap [] while listening to the FM radio.

- Sound is muted.
- Tap [] once again to hear sound.

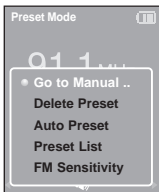


- Always connect your earphones to the player when searching or setting frequencies. The earphones are used as antennas to receive FM radio reception.

Listening to FM Radio (Continued)

To switch to Manual mode

Select this mode if you want to manually search through the FM band one frequency at a time.



1 Tap [] in <Preset Mode>.

2 Tap [] to select <Go to Manual Mode> and then tap [].

- You will see <Manual Mode> on the screen.

To switch to Preset Mode

Select this mode if you want to search through your saved FM presets one preset at a time.



1 Tap [] in <Manual Mode>.

2 Tap [] to select <Go to Preset Mode> and then tap [].

- You will see <Preset Mode> on the screen.

3 Tap [] to select the preset frequency.

- Once <Preset Mode> appears on the screen, you can select a radio frequency and listen to it.



NOTE

- If no preset frequencies are set, you will see <Preset list does not exist.> and the player will not switch to <Preset Mode>.
- If you set <Default Set>, the saved preset lists are deleted.
- If you select <Preset List> on the FM option menu, you will see the preset frequencies.

For more information on the preset lists, see pages 26-27.

Download from www.Softmanuals.com. All Manuals Search And Download.

To automatically search for frequencies



Press and hold [< >] in <Manual Mode>.

- The broadcast station frequency nearest from the point the button is released will be searched.

To manually search for frequencies



Tap [< >] in <Manual Mode>.

- Moves to next frequency whenever the button is tapped.

Setting FM Presets

You can set up to 30 presets in FM Radio mode.

To automatically set Presets



- 1 Tap [] in FM Radio mode.
- 2 Tap [] to select <Auto Preset> and then tap [].
 - You will see the Auto Preset window on the screen.
- 3 Tap [] to select <Yes> and then tap [].
 - Up to 30 presets are automatically saved.



NOTE

- Using <Auto Preset> deletes all previous presets.

To cancel during setting

Tap [] to cancel during auto scanning.

- The auto preset setting is canceled and frequencies set up to then are stored.

To manually set Presets



1 Tap [< >] to select the desired frequency in <Manual Mode>.

2 Tap [@].

3 Tap [↕] to select <Add Preset> and then tap [⦿].

- The selected frequency will be added to the preset list. A maximum of 30 preset numbers are added to the list in sequential order.

4 To set a preset for other frequencies, follow 1-3 steps above.



NOTE

- If a frequency that you try to add already exists in the list, you will see <This preset already exists.> and the selected frequency is not added to the preset list.

To search for presets in Preset mode



Tap [< >] in <Preset Mode>.

- The preset number is selected and you can listen to the stored radio frequency.

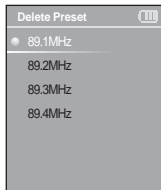










NOTE

- If you want to check the preset list in <Preset Mode>, tap [@] to select <Preset List> and Tap [⦿].

Download from [Www.Somanuals.com](http://www.Somanuals.com). All Manuals Search And Download.

To Delete Presets



- 1** Tap [] in <Preset Mode>.
- 2** Tap [] to select <Delete Preset> and then tap [].
 - The preset frequencies will appear.
- 3** Tap [] to select the preset frequency you want to delete and then tap [].
 - The confirmation window will appear.
- 4** Tap [ ] to select <Yes> and then tap [].
 - The selected preset will be deleted.
- 5** To select and delete other preset numbers, follow 1-4 steps above.

Setting FM Radio

To set FM Sensitivity



1 Tap [] in FM Radio mode.

2 Tap [] to select <FM Sensitivity> and then tap [].

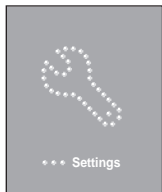
- The FM Sensitivity menu appears.

3 Tap [] to select the sensitivity and then tap [].

- You can select from <High>, <Middle> and <Low>.
- The higher FM sensitivity is, the more frequencies that can be received.

Setting Display

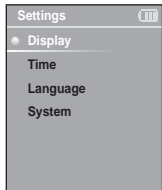
You can adjust the screen saver and the turn-off time for the screen display.



1 Press and hold [⌘] to move to the main menu.

2 Tap [⏪ ⏩] to select <Settings> and then tap [Ⓞ].

- The Settings menu appears.



3 Tap [⏴ ⏵] to select <Display> and then tap [Ⓞ].

- The Display menu appears.

4 Use the [⏴ ⏵] and [Ⓞ] to set the desired functions.



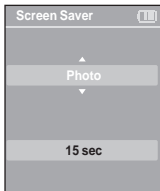
NOTE

Button Operation

- Tap [⏴ ⏵] to move up or down in the list.
- Tap [Ⓞ] to select and confirm your settings.
- Tap [⌘] to return to the previous screen.

- **<Screen Saver>**: You can set an image to use as a screen saver. Select either <Analog Clock>, <Animation1>, <Animation2> <Animation3>, and <Photo> and set the wait time. <Photo> is a photo you designated as a screen saver in <Add to Screen Saver>.
 - ▶ page 32
 - You can select from <15sec>, <30sec>, <1min>, <3min>, <5min>, and <Off>. If no button is tapped within the time set shown above, the player will display the screen saver image.
- **<Display Off>** : If no button is tapped within the time set shown below, the screen display will automatically turn off. Select either <15sec>, <30sec>, <1min>, <3min>, <5min>, and <Always On>. With the display turned off, tap any button to turn back on the screen display.

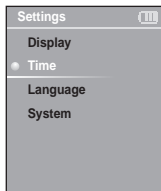
Screen Saver Setting



- 1** Tap [⏮] to select <Screen Saver> and then tap [⏹].
 - The screen saver menu appears.
- 2** Tap [⏮] to select the desired screen saver image and then tap [⏹].
- 3** Tap [⏮] to select a wait time and then tap [⏹].
 - The Confirmation window will appear.
- 4** Tap [⏪] to select <Yes> and then tap [⏹].
 - The screen saver setting is complete.

Setting Time

You can not only set the current Time set but also Sleep Timer and Auto Power Off.



1 Press and hold [⏏] to move to the main menu.

2 Tap [⏪ ⏩] to select <Settings> and then tap [⏏].

- The Settings menu appears.

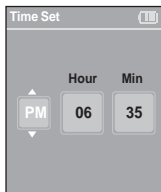
3 Tap [⏪ ⏩] to select <Time> and then tap [⏏].

- The Time menu appears.

4 Use the [⏪ ⏩] and [⏏] to set the desired functions.

- **<Sleep Timer>** : Turns off power automatically after the preset time. Select either <Off>, <15min>, <30min>, <60min>, <90min>, or <120min>.
- **<Auto Power Off>** : Automatically turns power off when there is no button operation after the preset time in the pause mode. Select either <15sec>, <30sec>, <1min>, <3min>, or <5min>.
- **<Time Set>** : You can set the current time. ▶ Page 43

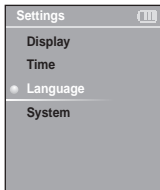
Time Set




- 1 Tap [⌵ ⌶] to select <Time set> and then tap [Ⓞ].
- 2 Tap [⏪ ⏩] to move to <AM/PM, Hour, Minute> and use the [⌵ ⌶] to set the time.
- 3 Tap [Ⓞ].
 - The confirmation window will appear.
- 4 Tap [⏪ ⏩] to select <Yes> and then tap [Ⓞ].
 - The time setting will be saved.

Setting Language

You can set the language for the menu.






1 Press and hold [] to move to the main menu.

2 Tap [ ] to select <Settings> and then tap [].

- The Settings menu appears.

3 Tap [ ] to select <Language> and then tap [].

4 Use the [ ] and [] to select the language for the menu.

- Select from <English>, <한국어 >, <Français>, <Deutsch>, <Italiano>, <日本語 >, <汉语(简体)>, <漢語(繁體)>, <Español>, <Русский >, <Magyar>, <Nederlands>, <Polski>, <Português>, and <Svenska>.

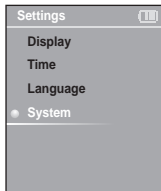


NOTE

- The supported languages can be changed or added.

Setting the System

You can set various functions of the player.



- 1 Press and hold [] to move to the main menu.
- 2 Tap [] to select <Settings> and then tap [].
 - The Settings menu appears.
- 3 Tap [] to select <System> and then tap [].
 - The System menu appears.

4 Use the [] and [] to set the desired functions

- **<Resume>**: You can set the start point where the player resumes playback after you stop playing the music. Selecting <On> will resume playback from the last stopped point while <Off> will resume playback from the beginning of the last played file.
- **<Beep>**: Enables button sounds. Select either <On> or <Off>.
- **<Volume Limit>**: You can avoid hearing damage by setting the limit of the volume when using the earphone. <On> will limit the maximum volume level up to 20. The maximum volume level when Volume Limit is set to <Off> is 30.
- **<FM Region>**: You can select your regional area for FM radio. Select from <Korea/USA>, <Japan> and <Other Countries>.



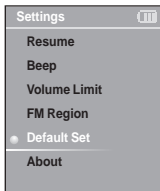
NOTE

- Frequency range by region
 - Korea/USA: Search for FM frequencies in 100 kHz increments between 87.5 MHz~108.0 MHz.
 - Japan: Search for FM frequencies in 100 kHz increments between 76.0 MHz~108.0 MHz.
 - Other Countries: Search for FM frequencies in 50 kHz increments between 87.50 MHz~108.00 MHz.
- FM region can be deleted or changed according to the target region of the player.
- If you change the FM region, the previously stored radio frequencies are deleted.

Setting the System (Continued)

- **<Default Set>** : Returns all settings to the default value.
- **<About>**: You can check the firmware version, memory capacity and file number.
 - Firmware Version : Displays the current firmware version.
 - Memory : Indicates the remaining memory capacity. <Used> indicates the usage, <Remain> indicates the remaining capacity and <Total> indicates the total memory capacity.
 - Files : <Music> indicates the number of music files, <Photo> for the number of photos, and <Total> for the number of entire files.

Default Set



1 Tap [] to select <Default Set> and then tap [].

- The Confirmation window will appear.

2 Tap [] to select <Yes> and then tap [].

- <Yes> : Initializes all settings to default.
- <No> : Cancels default settings.



NOTE

- If you set <Default Set>, all functions you set are initialized to the default settings.

■ Regarding the Built-In Memory

The actual built-in memory available is slightly less than indicated as the internal firmware uses a portion of the memory.

Troubleshooting

If a malfunction is experienced, check the following.
If the problem persists, contact a Samsung Service Center near you.

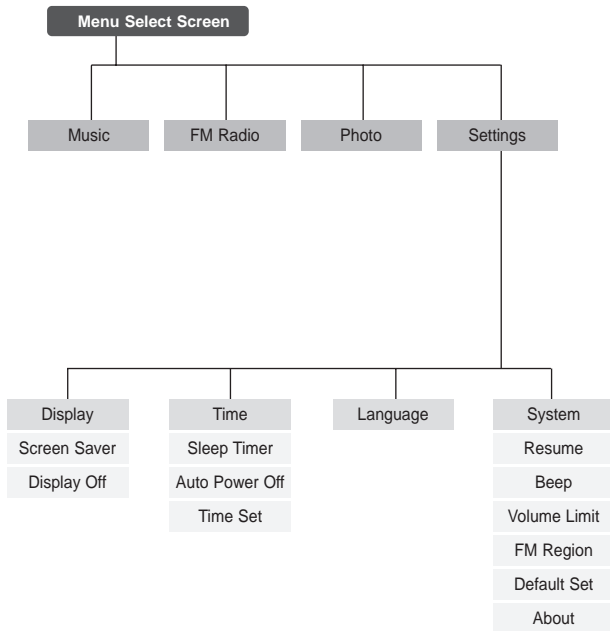
Problem	Check points & Troubleshooting
Power will not turn on.	<ul style="list-style-type: none">■ Power will not turn on if the battery is fully discharged. Recharge the battery and turn on the player again.■ Press the Reset hole.
Buttons do not work.	<ul style="list-style-type: none">■ Check if the [HOLD ►] switch is in the direction of the arrow position.■ Check if you tapped the right button, then tap again. ► Page 11■ Press the Reset hole.
The screen will not turn on.	<ul style="list-style-type: none">■ If <Display Off> is selected from <Settings> → <Display>, the screen display will be turned off. Tap any button to turn on the screen display or check the Display settings. ► Page 41■ The screen may not be visible under direct sunlight.
Power is turning off.	<ul style="list-style-type: none">■ Check the battery status.■ The power is automatically turned off when the battery is fully discharged. Recharge the battery.■ If <Auto Power Off> is selected from <Settings> → <Time>, the Power in the pause mode will be turned off. Turn on the Player.
Battery life differs from the Manual.	<ul style="list-style-type: none">■ The battery time can vary, depending on the sound mode and display setting.■ The battery life may be shortened when left for extended periods in low or high temperatures.
Program Malfunction	Please check if your PC requirements are met.
Connection to your PC is disabled.	Press <Start> on the toolbar of your PC to run Windows Update. Select Key Updates and Service Packs, then update all. Reboot your PC and reconnect.

Troubleshooting (Continued)

Problem	Check points & Troubleshooting
Playing is disabled.	<ul style="list-style-type: none">■ Check if the available file has been saved in the player.■ Check if the music file is damaged.■ Check if there is enough battery power.
File upload is disabled.	<ul style="list-style-type: none">■ Check if the USB cable is securely connected. Reconnect if necessary.■ Check if the memory is full.■ Press the Reset hole.
Files or data are missing.	Check if the USB cable has been disconnected during file or data transmission. If this is the case, it may cause serious damage not only to files/data but also to the player. You have to be extra cautious as Samsung cannot be not held responsible for data loss.
Abnormal Play Time Display during Play	Check if the file is in VBR (Variable Bit Rate) format.
The player is hot.	Heat may be generated during recharging. This has no effect on the player life or functions.

Menu Tree

You can quickly view the menu structure.



Product Specifications

Model Name		YP-K3
Power		3.7V (Li-Polymer Rechargeable)
Built-in Battery Power		500mAh
File	Compatibility	Music : MPEG1/2/2.5 Layer3(8kbps-320kbps, 22kHz-48kHz) WMA(48kbps-192kbps, 22kHz-48kHz) Image : JPEG(ISO/IEC 10918-1/Annex F-Sequential DCT-based mode of operation)
Earphone Output		20mW(16 Ω)
Output Frequency Range		20Hz-20KHz
Noise Ratio		88 dB (based on 1KHz 0 dB)
Play Time		Music 25 hrs (based on MP3 128kbps, volume level 15 and normal mode)
Temperature Range for Operation		-5-35 °C (23-95°F)
Case		Stainless, Plastic
Weight		1.76 oz (50g)
Dimension (WxHxD)		1.73 X 3.78 X 0.27 inches (44 X 96 X 6.95 mm)
FM Frequency		87.5-108.0MHz
FM Signal to Noise Ratio		50dB
FM T.H.D		1%
FM Useable Sensitiivity		38dBμ

- The contents of this Manual are subject to change without prior notice for further improvement.

License

The product player accompanying this user manual is licensed under certain intellectual property rights of certain third parties. This license is limited to private non-commercial use by end-user consumers for licensed contents. No rights are granted for commercial use.

The license does not cover any product player other than this product player and the license does not extend to any unlicensed product player or process conforming to ISO/IEC 11172-3 or ISO/IEC 13818-3 used or sold in combination with this product player. The license only covers the use of this product player to encode and/or decode audio files conforming to the ISO/IEC 11172-3 or ISO/IEC 13818-3. No rights are granted under this license for product features or functions that do not conform to the ISO/IEC 11172-3 or ISO/IEC 13818-3.

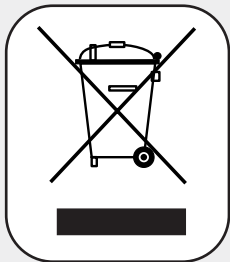
— EUROPE ONLY —

This marking shown on the product or its literature, indicates that it should not be disposed with other household wastes at the end of its working life.

To prevent possible harm to the environment or human health from uncontrolled waste disposal, please separate this from other types of wastes and recycle it responsibly to promote the sustainable reuse of material resources. Household users should contact either the retailer where they purchased this product, or their local government office, for details of where and how they can take this item for environmentally safe recycling.

Business users should contact their supplier and check the terms and conditions of the purchase contract.

This product should not be mixed with other commercial wastes for disposal.



Contact SAMSUNG WORLD WIDE

If you have any questions or comments relating to Samsung products, please contact the SAMSUNG customer care center.

Country	Customer Care Center	Web Site
CANADA	1-800-SAMSUNG (7267864)	www.samsung.ca
MEXICO	01-800-SAMSUNG (7267864)	www.samsung.com/mx
U.S.A	1-800-SAMSUNG (7267864)	www.samsung.com
ARGENTINE	0800-333-3733	www.samsung.com/ar
BRAZIL	0800-124-421	www.samsung.com/br
CHILE	800-726-7864(SAMSUNG)	www.samsung.com/cl
COSTA RICA	0-800-507-7267	www.samsung.com/latin
ECUADOR	1-800-10-7267	www.samsung.com/latin
EL SALVADOR	800-6225	www.samsung.com/latin
GUATEMALA	1-800-299-0013	www.samsung.com/latin
JAMAICA	1-800-234-7267	www.samsung.com/latin
PANAMA	800-7267	www.samsung.com/latin
PUERTO RICO	1-800-682-3180	www.samsung.com/latin
REP. DOMINICA	1-800-751-2676	www.samsung.com/latin
TRINIDAD & TOBAGO	1-800-7267-864	www.samsung.com/latin
VENEZUELA	1-800-100-5303	www.samsung.com/latin
BELGIUM	02 201 2418	www.samsung.com/be
CZECH REPUBLIC	844 000 844	www.samsung.com/cz
DENMARK	38 322 887	www.samsung.com/dk
FINLAND	09 693 79 554	www.samsung.com/fi
FRANCE	08 25 08 65 65 (€ 0,15/Min)	www.samsung.fr
GERMANY	01805 - 121213 (€ 0,12/Min)	www.samsung.de

Country	Customer Care Center	Web Site
HUNGARY	06 40 985 985	www.samsung.com/hu
ITALIA	199 153 153	www.samsung.com/it
LUXEMBURG	02 261 03 710	www.samsung.lu
NETHERLANDS	0900 20 200 88 (€ 0,10/Min)	www.samsung.com/nl
NORWAY	231 627 22	www.samsung.com/no
POLAND	0 801 801 881	www.samsung.com/pl
PORTUGAL	808 200 128	www.samsung.com/pt
SLOVAKIA	0850 123 989	www.samsung.com/sk
SPAIN	902 10 11 30	www.samsung.com/es
SWEDEN	08 585 367 87	www.samsung.com/se
U.K	0870 SAMSUNG (7267864)	www.samsung.com/uk
REP. Ireland	0818 717 100	www.samsung.com/uk
RUSSIA	8-800-200-0400	www.samsung.ru
UKRAINE	8-800-502-0000	www.samsung.com/ur
AUSTRALIA	1300 362 603	www.samsung.com/au
CHINA	800-810-5858, 010- 6475 1880	www.samsung.com.cn
HONG KONG	2862 6001	www.samsung.com/hk
INDIA	3030 82821600 1100 11	www.samsung.com/in
INDONESIA	0800-112-8888	www.samsung.com/id
JAPAN	0120-327-527	www.samsung.com/jp
MALAYSIA	1800-88-9999	www.samsung.com/my
PHILIPPINES	1800-10-SAMSUNG (7267864)	www.samsung.com/ph
SINGAPORE	1800-SAMSUNG (7267864)	www.samsung.com/sg
THAILAND	1800-29-3232 / 02-689-3232	www.samsung.com/th
TAIWAN	0800-329-999	www.samsung.com/tw
VIETNAM	1 800 588 889	www.samsung.com/vn
SOUTH AFRICA	0860 7267864 (SAMSUNG)	www.samsung.com/za
U.A.E	800SAMSUNG (7267864)	www.samsung.com/med

Free Manuals Download Website

<http://myh66.com>

<http://usermanuals.us>

<http://www.somanuals.com>

<http://www.4manuals.cc>

<http://www.manual-lib.com>

<http://www.404manual.com>

<http://www.luxmanual.com>

<http://aubethermostatmanual.com>

Golf course search by state

<http://golfingnear.com>

Email search by domain

<http://emailbydomain.com>

Auto manuals search

<http://auto.somanuals.com>

TV manuals search

<http://tv.somanuals.com>