



<http://www.samsungyepp.com>

Samsung Electronics America Inc.
105 Challenger Road, Ridgefield Park, N.J. 07660

SERVICE DIVISION
400 Valley Road, Suite 201
Mount Arlington, NJ 07856
TEL: 1-800-SAMSUNG (1-800-726-7864)

AH68-01248B (Rev 1.0)

Download from [Www.Somanuals.com](http://www.Somanuals.com). All Manuals Search And Download.

SAMSUNG

YP-N30



DIGITAL AUDIO PLAYER

yepp™

- MP3 & WMA Playback
- Removable Storage Device
- Voice Recording Function
- Upgradable
- Long Battery Life of up to 15hrs
- 8 Mode Equalizer

Contents

Preparations

Safety Instructions	4
Features	6
Components	9
Location of Controls (yopp)	10

Connection to Computer

Connecting yepp to PC	12
Manual Installation of USB Driver	16
Using the removable storage.....	22
● Downloading/Uploading files	22
● Disconnecting the USB cable	23
● Formatting	24
Installing CD Ripper	25

Basic Usage

Listening to Music with yepp	26
Setting up Volume/Hold Functions	27
Changing Modes	28
Recording Voice.....	29
Searching for Music Files	30

Additional Usage

Loop Repeating	32
Setting up MENU	33
Repeating Tracks	34
Setting up EQ	35
Managing Files	36
● Deleting	36
● Formatting	37
Customizing Options (Display)	38
● Display	39
● Back-Light	40
● Scroll Speed.....	40
● Contrast	41
● Auto OFF	41

Appendix










Description of Buttons (yepp player)	42
MENU Table	44

Customer Support

Troubleshooting	46
Security	48
Specifications.....	49
Safety Information	50
Warranty	52

Safety Instructions

Read and understand all the instructions to avoid injury to yourself and damage to the equipment.

<p>Do not expose to extreme temperatures (above 95°F or below 23°F). Do not expose to moisture.</p> 	<p>Do not apply excessive pressure to the device.</p> 	<p>Do not let any foreign matter spill into the device.</p> 
<p>Do not place heavy objects on top of the device.</p> 	<p>Do not expose to chemicals such as benzene and thinners.</p> 	<p>Remove batteries when the device is left unused for a long period of time.</p> 
<p>Do not expose to direct sunlight or heat sources.</p> 	<p>Do not store in dusty areas.</p> 	<p>Do not try to disassemble and repair the device yourself.</p> 

Earphone

Follow Traffic Safety Instructions

- Do not use the earphone while driving an automobile or riding a bicycle. It's not only dangerous, but also against the law.
- It may cause an accident if you turn up the volume of the earphone while walking down the street, especially crossing at intersections.

Protect your ears

- Do not turn up the volume too high. Doctors warn against prolonged exposure to high volume.
- Stop using the device or turn the volume down if you have ringing in your ears.

Ambient operating conditions

- Ambient temperature: 5°C ~ 35°C (41°F ~ 95°F)
- Humidity : 10 ~ 75%

Environmental Information

- Follow local guidelines for waste disposal when discarding packages, batteries, and old electronic appliances.
- Yepp packages use cardboard, polyethylene etc., and do not use unnecessary materials.

DIGITAL SOUND yepp'

Miniature Design

Convenient small and light design

Playing Time

This unit uses one AAA/LR03 alkaline battery. Operation can last up to 15 hours. Actual playing time may vary according to the type and capacity of the battery.

Upgradable

You can upgrade the built-in programs if available.

ex) Add functions, CODEC, etc.

Please refer to yepp home page (<http://www.samsungyepp.com>) when you need to upgrade your yepp.

DIGITAL SOUND yepp'

MP3 & WMA Playback

MP3 is an MPEG1 Layer3 audio format.

WMA is a Microsoft Windows Media audio format.

Removable Storage Device

You can easily copy and paste files to yepp player using Windows Explorer

Backlight

Fashionable Blue-Color Backlight

Voice Recording Function

Suitable for recording lectures, meetings.

Sound

You can adjust equalizer manually.

D.I.Y.

- Adjustable Scroll speed
- Adjustable Contrast

Components



yepp'
Player



Earphone
AH59-01014A



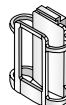
USB Cable
AH39-00474A



Installation CD
AH80-00046C



User manual
AH68-01248B



Belt Clip
AH97-00844A



One Battery
(1.5V AAA/LR03 type)
4301-000115



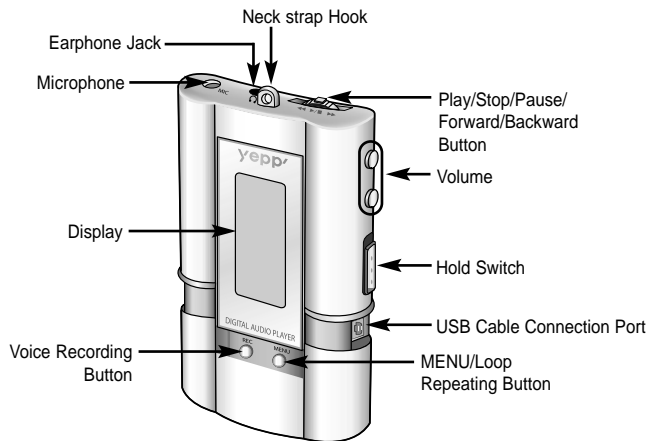
Neck Strap
AH61-00845A

Model	YP-N30 S	YP-N30 H
Built-in memory	64MB	128MB

- The capacity of the useable built-in memory is less than indicated as the internal firmware uses a part of the memory as well.
- To attach or remove the yepp from the Belt clip, use a coin to open the screw to loosen the hook on the back of clip.
- Design and appearance subject to change for improvement without notice.

Location of Controls (yepP)

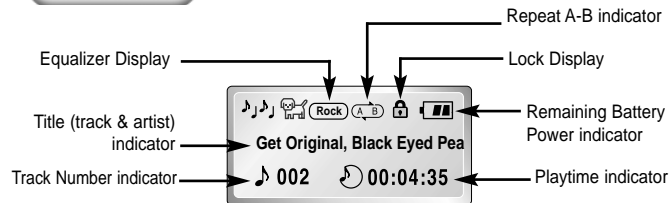
Front



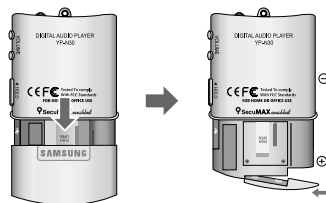
Note :

- Please be sure to peel off the protective tape from the LCD panel.

Display



Inserting a Battery



- 1 After sliding the cover in the direction of the arrow, open the cover by pressing "PUSH OPEN".
- 2 Insert a battery to the right poles +, - and push-close the cover in the direction the arrow as indicated.

Note :

- Do not place heavy objects on the cover.

Connecting yepp to PC

Before connecting yepp to PC, make sure to install USB driver. If "Add New Hardware Wizard" appears, press the [Cancel] button and install USB driver.

System Requirements.

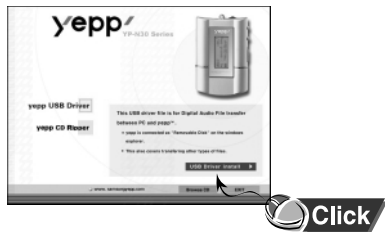
- Pentium 133MHz or greater
- Windows 98/ME/2000/XP
- 20MB of available hard disk space
- CD-ROM drive (double speed or greater)
- USB port (1.1) supported
- VGA graphic

Note :

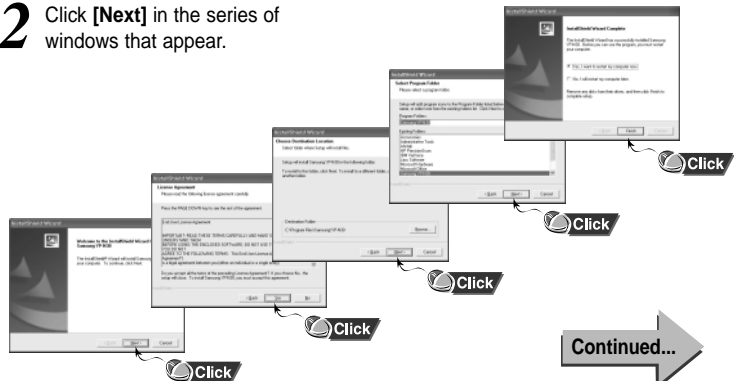
Install the operating system in Administrator Account mode for Windows 2000 or XP. Otherwise, installation will not be completed.

Installing software

- 1 Insert the Installation CD into CD-ROM drive. The picture shown below appears. Select **[USB Driver Install]**.



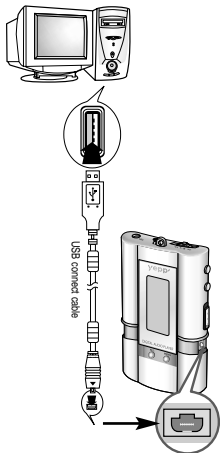
- 2 Click **[Next]** in the series of windows that appear.



When installation is completed, connect yepp to PC and use it as shown on the next page.

Connecting yepp to PC with USB cable

- 3 Plug one end of the USB cable into the USB port on the back of the PC.
- 4 Insert the battery into the yepp and turn on the power.
- 5 Slide down the bottom cover of the player. Plug the other end of the USB cable into the USB port on the right side at the bottom.
 - PC may temporarily malfunction if you unplug the USB cable from PC while yepp Explorer is initiating or executing a command.
- 6 USB driver is installed a message saying that it is searching for a new device. You may not see the display screen during installation. Go to the device manager to check that installation has been successfully completed.



- 7 When USB driver is installed, "SAMSUNG YP-N30" will appear in [System Properties] → [Device Manager] as shown in the picture to the right.

Note :

How to check USB driver

Windows 98,ME:

Control Panel → System → Device Manager → Universal Serial Bus controllers/SCSI and RAID controllers

Windows 2000:

Control Panel → System → Hardware → Device Manager

Windows XP:

Control Panel → System → Hardware → Device Manager



- 8 When USB driver is not Installed automatically, refer to next page.

Manual Installation of USB Driver

Go to "Downloading/Uploading files" on page 22 if the USB driver is in place.
Follow these steps if the USB driver is not in place :

1 Check the device manager.

Windows 98,ME:

Control Panel → **System** → **Device Manager**

Windows 2000:

Control Panel → **System** → **Hardware** →
Device Manager

Windows XP:

Control Panel → **System** → **Hardware** →
Device Manager



2 Check if there is a device listed with an exclamation point or a question mark (displayed as unknown device or USB device).

3 Double click on the device listed with an exclamation point or a question mark.

4 After selecting the driver, click on [Driver Update].



For Windows XP, refer to page 18.
For Windows 2000, refer to page 20.
For Windows 98/ME, refer to page 21.

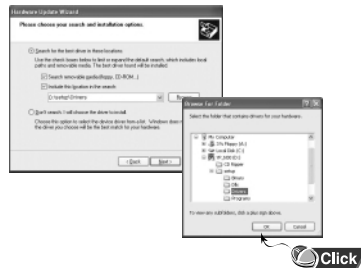
Continued...

In Windows XP

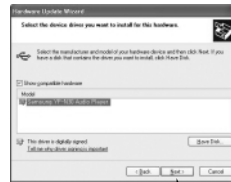
- 1** Connect yepp to PC.
The picture shown below appears.
Select **[Install from a list or specific location (Advanced)]**
and click **[Next]**.



- 2** Insert the installation CD. Select the driver for your system and click the **[Find]** button. Select the "Drivers" folder located in the "YP_N30 Installation setup" folder in "Browse Folder", click **[OK]** and go to **[Next]**.



- 3** Select YP-N30 and click **[Next]**



- 4** When Installation is completed,
click **[Finish]**.

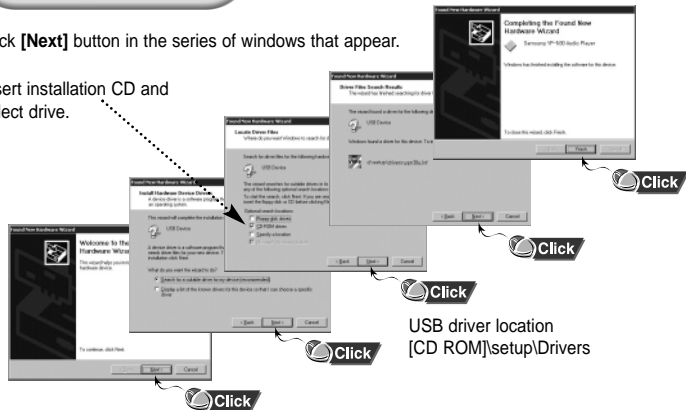


Continued...

In Windows 2000

Click **[Next]** button in the series of windows that appear.

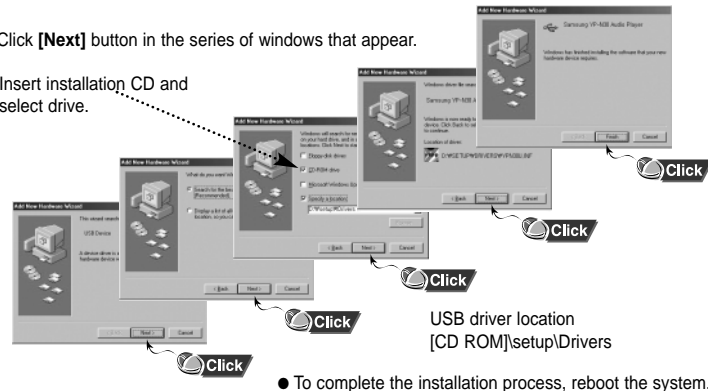
Insert installation CD and select drive.



In Windows 98

Click **[Next]** button in the series of windows that appear.

Insert installation CD and select drive.

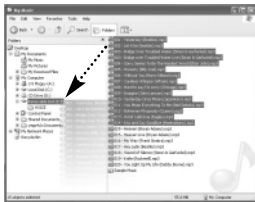


● To complete the installation process, reboot the system.

Using the removable storage

Downloading/Uploading files

- 1 Turn on the yepp and connect yepp to PC.
- 2 Open Windows Explorer on PC.
- 3 Select the file to save and drag-and-drop it into the removable disk icon. The saved files will be played in the order they were downloaded. Once they are downloaded you cannot change the sequence of play.



Note :

- Do not create new folders within the directory of the removable disk as the files saved in the newly created folders will not play.
- Music files such as MP3, WMA and SM3 can not be uploaded to PC due to copyright protection.

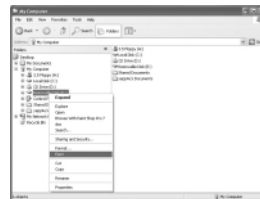
Notice :

- The "WRITING" message will appear during file download or upload. Disconnecting the USB cable while "WRITING" is displayed may cause malfunction of the unit.

Disconnecting the USB cable

After completing the file transmission you must disconnect the cable in the following way:

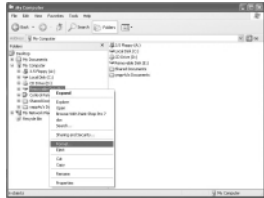
- 1 Select the removable disk icon and click the right mouse button to select [Eject].
- 2 Select [OK] and disconnect the USB cable when a picture appears as shown below.



Installing CD Ripper

Formatting

- 1** Select the removable disk icon and click the right mouse button to select **[Format]**.



- 2** Press the **[Start]** button.
- All saved files will be formatted.
 - You can change the name of removable disk by selecting **[Volume label]**.



Notice :

- By formatting, all previously preset menus will be initialized.
- Care must be taken as formatted files can not be recovered.

Note :

- You can format by executing "YP-N30 Format" located under **[Start]** → **[All Programs]**

Insert the Installation CD in the CD-ROM drive.

Click **[Next]** button in the series of windows that appear.




Use it referring to **[?]** after executing CD Ripper.

Note : When you install the CD-Ripper, Windows displays "for Windows 98/NT",but you can use it with Windows 2000 and XP as well.

Listening to Music with yepp


First, insert the battery and connect the earphone to the player.

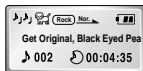
Playing Music (Power On)

When you press the  button, the yepp logo appears and a music/voice file is played.



Stopping Music (Power Off)


When you press the  button while playing, the music stops. If no buttons are pressed within 5 seconds (changes depending on settings), the yepp automatically powers off.



- Note :**
- WMA files can only be played at bit rates between 48Kbps and 192Kbps.
[supplied by Windows Media Player (Ver 8.0)] WMA files less than 48Kbps may not be played.
 - Power off time can be set in the MENU mode.

Setting up Volume/Hold Functions

Adjusting the Volume

Press the  button on the side of the yepp player to adjust the volume while playing.


Note : Volume ranges from 00 to 30.

- Press briefly to adjust step by step.
- Press and hold to adjust continuously.



HOLD Function

Under Hold mode, buttons will not work.




Slide the  switch on the player in the direction of the arrow.

- Then no buttons on the yepp player will work.
- When a button is pressed, "HOLD-ACTIVE" message will appear on the display.






Changing Modes

Changing to Voice Mode

- Stop playing music and press the  button to change to voice mode.
- Press the  /  button to play.



Changing to Music Mode



- Stop playing voice and press the  button one more time to change to music mode.
- Press the  /  button to play.

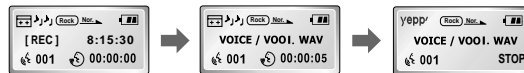


- Note :**
- The "PLEASE-WAITING" message will appear during switchover of modes. This may take a while.
 - Setup values for voice mode will not be saved when the mode is switched to music mode or when the power is switched off.


Recording Voice

To Record Voice

- 1** Press and hold the  button to begin recording voice.
- 2** Press the  button to stop recording. A new voice file is created.



Notice :

- Recording is done in the order of V001,V002....
- When memory is full, recording stops automatically. (The available time is displayed on the right from the center when recording begins.)
- When you press and hold the  button in Music mode, music mode is switched to voice mode after voice recording is stopped.
- The ability to play a recorded voice file will be disabled if the file name is changed.
- When recording voice, make sure to record it for longer than 5 seconds.

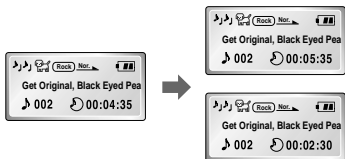
Searching for Music Files

Note :

- VBR(Variable Bit Rate) file: MP3 file whose compression rate changes when played.
- With VBR files, pressing the ◀◀ button within 5 seconds from the start of the track may not result in the previous track playing.
- With VBR files, the actual running time may differ from that of the player display.
- This player may not play back MPEG1 LAYER1 or 2 files.

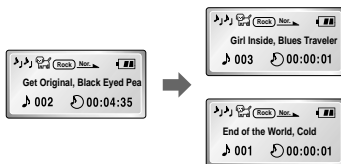
Searching for Specific Parts in PLAY Mode

Press and hold the ◀◀/▶▶ button while playing to find the part you want to listen to.
Release the ◀◀/▶▶ button to resume playing.



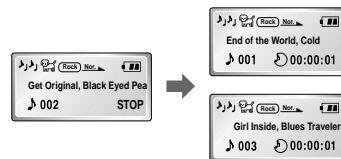
Searching for Music Files in PLAY Mode.

Press the ▶▶ button briefly to play the next track. Press the ◀◀ button briefly within 5 seconds from the start of the track to play the previous track. Press the ◀◀ button briefly after 5 seconds from the start of the track to play from the beginning of the current track.



Searching for Music Files in STOP Mode.

Press the ◀◀/▶▶ button in STOP mode to skip to the previous or next track.
Press the ▶/■ button to play.




Note :

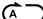
- In voice mode you can move to the first or last track by pushing the ◀◀/▶▶ button to the left or right.

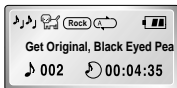
Loop Repeating

Loop Function


Starting Point

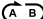
While playing music files, press the  button briefly at the beginning of the loop you want to set.

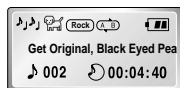
 blinks in the display.




Ending Point


Press the  button briefly again at the end of the loop.

 appears in the display.
The loop is played repeatedly.




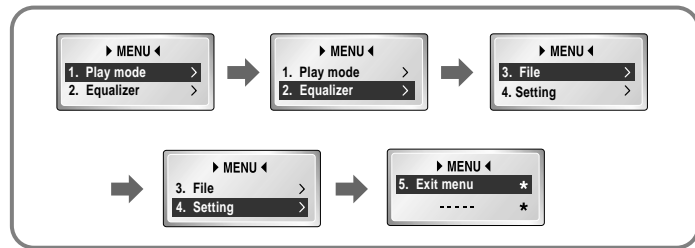
Note : Press the  button briefly to cancel the loop.

Setting up MENU

Press and hold the  button on the yepp player to switch to **MENU** mode.

Use the /  button to select and the /  button to move.

Press the  button one more time to cancel the **MENU** mode.



- **Play mode** : To select track repeating mode.
- **Equalizer** : To use equalizer function.
- **File** : To delete or format music files.
- **Setting** : To change the basic setup options of the display.
- **Exit menu** : To exit **MENU**.

Note :

- In **MENU**, **Go Up** can be used to exit the current setting.
- In **MENU** mode, no input for 10 seconds will cancel the **MENU** mode.

Repeating Tracks

Track Repeating Function

- 1** In **MENU**, select **1. PLAY MODE**. (refer to “Setting up MENU”)
- 2** In **PLAY MODE**, use the ◀▶/▶▶ button to move to the mode you want and press the ▶/■ button to select.

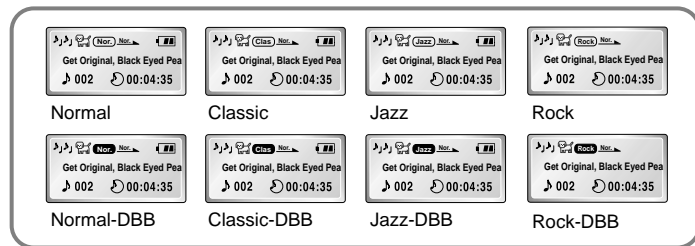


- **Normal**: To play all the tracks in order one time. Nor
- **Repeat_1**: To repeat one track. QNE
- **Repeat_All**: To repeat all tracks. AID
- **Shuffle**: To play tracks at random. S
(The shuffle function is disabled in voice mode.)
- **Intro-Song**: To play the first 10 seconds of each track. Intro
- **Go up**: To move to the upper menu.

Setting up EQ

EQ Function

- 1** In **MENU**, select **2. Equalizer**. (refer to “Setting up MENU”)
- 2** In **EQ**, use the ◀▶/▶▶ button to move to the setting you want (out of the 4 settings) and press the ▶/■ button to select.
 - Select the **DBB Mode** if you want to fine-tune the sound.



Note :

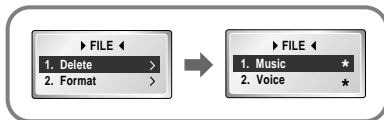
- **DBB** is for Dynamic Bass Booster, which enhances bass response.

Managing Files

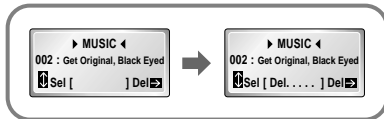
Deleting

1 In **MENU**, select **3. FILE**. (refer to “Setting up MENU”)

2 In **FILE**, select **Delete** and the mode (Music or Voice) the target file is in.



3 Move to the file to delete and press the **▶/■** button to select. The file is deleted.



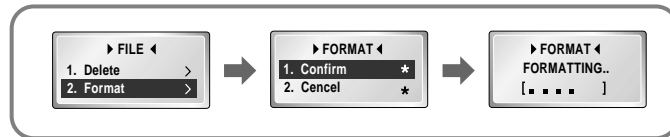
4 Select **Go Up** to exit the mode.



Formatting

1 In **MENU**, select **3. FILE**. (refer to “Setting up MENU”)

2 In **File**, select **Format** → **Confirm**.
Select **Cancel** to exit the mode.



Note :

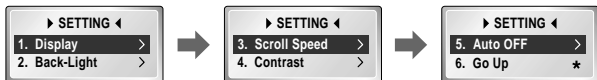
- All files will be deleted when formatting the built-in memory.
- Formatting while connected to the PC is recommended as formatting in the menu may take a long time.

Customizing Options (Display)

Setting Function

1 In **MENU**, select **4. Setting**. (refer to "Setting up MENU")

2 In **SET**, use the ◀/▶ button to move to the function you want to change and select the function by using the ▶/■ button.



Display → 1. Information

- **Play Time**: displays current play time ⏱
- **Remain Time**: displays remaining play time ⏱
- **Total Time**: displays total play time ⏱
- **Compression**: displays compression rate 128 kbps
- **Free Memory**: displays remaining memory 32 MB FREE

Display → 2. Logo

- **Default**: The puppy logo is selected.
- **yepp**: The "yepp" logo is selected.
- **None**: No logo is displayed.

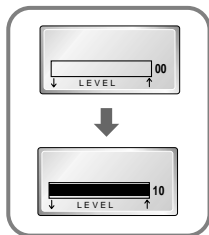
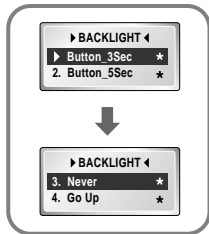


Back-Light

- **Button-3Sec:**
The backlight stays on for 3 seconds when the button is pushed.
- **Button-5Sec:**
The backlight stays on for 5 seconds when the button is pushed.
- **Never:**
The backlight does not illuminate.
* By selecting [Never] you can save battery power.
* The backlight does not illuminate when the residual battery level is insufficient.

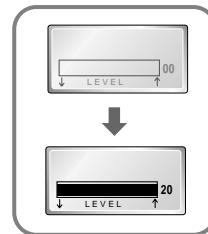
Scroll Speed

- Press the ◀◀/▶▶ button to set the Scroll Speed.
- The setting range of the scroll speed, which adjusts the speed of the track title flow, is 0 to 10.



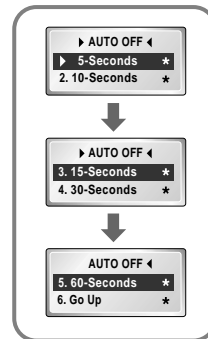
Contrast

- Press the ◀◀/▶▶ button to set the contrast.
- The setting range of the contrast, which adjusts the brightness of the screen, is 0 to 20.



Auto OFF

- **5-Seconds:**
Power is automatically turned off when no button is pressed for 5 seconds.
- **10-Seconds:**
Power is automatically turned off when no button is pressed for 10 seconds.
- **15-Seconds:**
Power is automatically turned off when no button is pressed for 15 seconds.
- **30-Seconds:**
Power is automatically turned off when no button is pressed for 30 seconds.
- **60-Seconds:**
Power is automatically turned off when no button is pressed for 60 seconds.



Description of Buttons (yebb player)

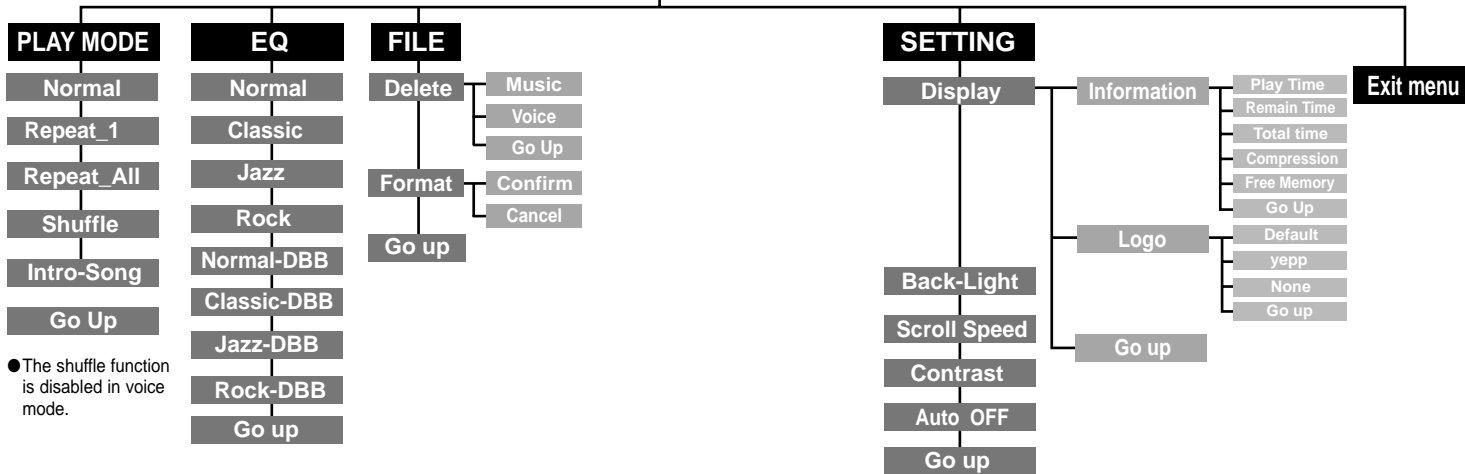
BUTTON	STATUS	PRESSING LENGTH	RESPONSE
▶ / ■	Power Off		Power On, and play
	Play		Stop(When no button is pressed for 5 seconds, yebb powers off automatically)
	MENU Mode		Selection
	Intro Play		Cancelling Intro, and play generally
▶▶	Play	Less than 1 second	Play the next track
	Play	Longer than 1 Second	Fast forward search in PLAY mode
	Stop		Skip to the next track
	MENU Mode		Move upward

◀◀	Play	Short	Within 5 seconds from the start: Play the previous track After 5 seconds from the start: Play the beginning of the current track.
	Play	Longer than 1 Second	Fast reverse search in PLAY mode
	Stop		Skip to the next track
	MENU Mode		Move downward
+	Play or Stop Mode		Volume increase
-	Play or Stop Mode		Volume decrease
MENU ●	Play	Short	Set the starting point for loop function
	During Loop Setting	Short	Loop mode
	Loop Mode	Short	Cancel loop mode
	Stop	Short	Changing modes (music ↔ voice)
	Play or Stop Mode	Longer than 2 Seconds	Enter MENU
	MENU Mode		Exiting MENU
REC ●	Play or Stop Mode	Longer than 1 Second	Voice recording
	Voice Recording		Stop voice recording

MENU Table

MENU

● Select with the ▶/■ button and move with the ◀/◂▶ button.



● The shuffle function is disabled in voice mode.

Troubleshooting

yep! does not work and the LCD displays nothing.

- Check the battery capacity
- Check to see if the battery is inserted to the right poles (+ , -)

In PLAY mode, music is not played after pressing the ►/■ button

- Check to see if MP3 or WMA files are saved in the built-in memory.
- The player skips when incompatible files (ex. MPEG1 LAYER1 files) are detected.
Start the player again after deleting the files on the PC.
- Check to see if the HOLD switch is locked.

Files cannot be downloaded.

- Check to see if the driver is installed correctly in the computer.
- Check the connection between yep! and computer.
- Check and/or replace the battery, turn on the yep!'s power.

Backlight does not work.

- Check the backlight setup.
- When the battery power is low, the backlight will go out.

The buttons do not work.

- Check setting of Hold switch.

yep! keeps being turned off.

- In Stop mode, the power is automatically turned off after ten seconds (changes depending on settings).
- Check to see if there are files saved in it.

Something's wrong with play time displayed during Play mode.

- Check if it plays a VBR (Variable Bit Rate) file.
The time display of a VBR file is inconsistent.
- The time may be incorrect for high compressed (bps) files.

LCD window is dark

- Check Contrast

Strange letters are displayed

- Only ID3 1.0 is supported.
- The file name is only partially displayed if it is too long (more than 8 English letters).

Security

You can get legal MP3 files from a growing number of Internet sites.

What is SecuMax?

With the increasing amount of digital multimedia content, the content providers became concerned with the ease in which the content could be copied and distributed in violation of their copyrights.

This matter required a system called SecuMAX for protecting copyrighted music and for using legal content conveniently.

- ◆ SecuMAX protects copyrighted music against infringement.
- ◆ SecuMAX can be adapted to various types of digital contents.
- ◆ For further details on SecuMAX, please visit www.secumax.com

Specifications

Model	YP-N30
Built-in Memory capacity	128MB(YP-N30 H)/64MB(YP-N30 S)
Voltage	1.5VX1 (AAA/LR03 size alkaline battery)
Playing time	last up to 15hours (Alkaline battery, MP3 128Kbps, Vol level 20)
Dimensions/Weight	44 X 65 X 14.5 mm/34g (without battery)
Case	Plastic/Aluminum
Noise Ratio	85dB with 20kHz LPF (1KHz 0dB)
Earphones Jack Output Power	5mW/CH (16 Ω)
Output Frequency Range	20Hz~20kHz
Operating Temperature Range	-5 ~ +35°C (23 ~ 95F)

Safety Information

FCC Part 15: This equipment has been tested and found to comply with the limits for a Class B digital device, pursuant to Part 15 of the FCC Rules. These limits are designed to provide reasonable protection against harmful interference in a residential installation.

This equipment generates, uses, and can radiate radio frequency energy and, if not installed and used in accordance with the instructions, may cause harmful interference to radio communications. However, this notice is not a guarantee that interference will not occur in a particular installation. If this equipment does cause harmful interference to radio or television reception, which can be determined by turning the equipment off and on, the user is encouraged to try one or more of the following measures:

- Reorient or relocate the receiving antenna.
- Increase the distance between the equipment and receiver.
- Connect the equipment to an outlet on a circuit different from that to which the receiver is connected.
- Consult the dealer or an experienced radio/TV technician.

Modifications

Any changes or modifications not expressly approved by the grantee of this device could void the user's authority to operate the device.

Compliance

This product conforms to the following Council Directive:

- Directive 89/336/EEC, 92/31/EEC(EMC)

Declaration of Conformity

Name: Samsung Electronics Co., Ltd
Address: 416, Maetan-3Dong, Paldal-Gu, Suwon
City, Kyungki-Do, Korea 442-742

declares under its sole responsibility that the product

Trade Name: Samsung Electronics Co., Ltd
Model Number: YP-N30

has been tested according to the FCC/CISPR22/95 requirements for Class B devices and found compliant with the following standards

EMI/EMC: AnSI C63.4 1992, FCC Part 15 Subpart B

This device complies with part 15 of the FCC Rules.

Operation is subject to the following two conditions:

1. This device may not cause harmful interference, and
2. This device must accept any interference received, including interference that may cause undesirable operation.

Party Responsible for Product Compliance

Samsung Electronics America
QA Lab.
3351 Michelson Dr. Suite #290
Irvine, CA92612

Warranty

Samsung warrants this product as free of defects in material, design and workmanship for the period of twelve(12) months from the original date of purchase.

If during the period of warranty this product proves defective under normal use and service, you should return the product to the retailer from whom it was originally purchased. The liability of Samsung and its appointed maintenance company is limited to the cost of repair and/or replacement of the unit under warranty.

Return of the product for defective reasons should be to the original purchaser, however Samsung Authorized Dealers and Authorized Service Centers will comply with the warranty on the terms issued to purchasers in the country concerned, for further information relating to the Authorized Service Centers contact.
1-800-SAMSUNG (1-800-726-7864)
www.samsungyepp.com

WARRANTY CONDITIONS:

1. The warranty is only valid when the warranty card is properly completed, and upon presentation of the proof of purchase consisting of original invoice or sales slip confirmation, indicating the date of purchase, dealers name, model, serial No. and product number. Samsung reserves the right to refuse warranty service if this information has been removed or changed after the original purchase of the product from the dealer.
2. Samsung's obligations are to the repair of the defective part, and at its discretion, replacement of the product (service exchange unit).
3. Warranty repairs must be carried out by an Authorized Samsung Dealer/Service Center. No reimbursement will be made for repairs carried out by non Samsung Centers, and warranty coverage will not be valid for any repairs or damage caused by such repairs.
4. Repair or replacement under the terms of this warranty does not give right to extension to or a new starting of the period of warranty. Repair or direct replacement under the terms of this warranty may be fulfilled with functionally equivalent service exchange units.

5. The warranty is not applicable in cases other than defects in material, design and workmanship. The warranty does not cover the following:

- ◆ Periodic checks, maintenance, repair and replacement of parts due to normal wear and tear.
- ◆ Abuse or misuse, including but not solely limited to the failure to use this product for its normal purpose or in accordance with Samsung's instructions usage and maintenance.
- ◆ The product has been used in conjunction with accessories not approved by Samsung for use with this product.
- ◆ Failure of the product arising from incorrect installation or use not consistent with technical or safety standards in current force, or failure to comply with product manual instructions.
- ◆ Accidents, Acts of God or any cause beyond the control of Samsung caused by lightning, water, fire, public disturbances and improper ventilation.

- ◆ Unauthorized modifications carried out for the product to comply with local or national technical standards in countries for which the Samsung product was not originally designed.
 - ◆ Repairs performed by non-authorized service centers such as opening of the product by a non-authorized person.
 - ◆ The model, serial No. and product number on the product has been altered, deleted, removed or made illegible.
6. This warranty does not affect the consumers statutory rights nor the consumers rights against the dealer from their purchase/sales agreement.

THERE ARE NO EXPRESS WARRANTIES OTHER THAN THOSE LISTED AND DESCRIBED ABOVE, AND NO WARRANTIES WHETHER EXPRESS OR IMPLIED, INCLUDING, BUT NOT LIMITED TO, ANY IMPLIED WARRANTIES OF MERCHANTABILITY OR FITNESS FOR A PARTICULAR PURPOSE, SHALL APPLY AFTER THE EXPRESS WARRANTY PERIODS STATED ABOVE, AND NO OTHER EXPRESS WARRANTY OR GUARANTY GIVEN BY ANY PERSON, FIRM OR CORPORATION WITH RESPECT TO THIS PRODUCT SHALL BE BINDING ON SAMSUNG, SAMSUNG SHALL NOT BE LIABLE FOR LOSS OF REVENUE OR PROFITS, FAILURE TO REALIZE SAVINGS OR OTHER BENEFITS, OR ANY OTHER SPECIAL, INCIDENTAL OR CONSEQUENTIAL DAMAGES CAUSED BY THE USE, MISUSE OR INABILITY TO USE THIS PRODUCT, REGARDLESS OF THE LEGAL THEORY ON WHICH THE CLAIM IS BASED, AND EVEN IF SAMSUNG HAS BEEN ADVISED OF THE POSSIBILITY OF SUCH DAMAGES. NOR SHALL RECOVERY OF ANY KIND AGAINST SAMSUNG BE GREATER IN AMOUNT THAN THE PURCHASE PRICE OF THE PRODUCT SOLD BY SAMSUNG AND CAUSING THE ALLEGED DAMAGE. WITHOUT LIMITING THE FOREGOING, PURCHASER

- ASSUMES ALL RISK AND LIABILITY FOR LOSS, DAMAGE OR INJURY TO PURCHASER AND PURCHASER'S PROPERTY AND TO OTHERS AND THEIR PROPERTY ARISING OUT OF THE USE, MISUSE OR INABILITY TO USE THIS PRODUCT SOLD BY SAMSUNG NOT CAUSED DIRECTLY BY THE NEGLIGENCE OF SAMSUNG. THIS LIMITED WARRANTY SHALL NOT EXTEND TO ANYONE OTHER THAN THE ORIGINAL PURCHASER OF THIS PRODUCT, IS NONTRANSFERABLE AND STATES YOUR EXCLUSIVE REMEDY.

- Some states do not allow limitations on how long an implied warranty lasts, or the exclusion or limitation of incidental or consequential damages, so the above limitations or exclusions may not apply to you. This warranty gives you specific legal rights, and you may also have other rights which vary from state to state.
- This product is for personal use only, and is only for use in compliance with the limitations of copyright and other laws.

To obtain warranty service, please contact SAMSUNG at:
Samsung Electronics America, Inc.
400 Valley Road, Suite 201 Mount Arlington, NJ 07856
Tel: (973) 601-6000, Fax: (973) 601-6001
1-800-SAMSUNG (1-800-726-7864)
www.samsungyepp.com
081299

Free Manuals Download Website

<http://myh66.com>

<http://usermanuals.us>

<http://www.somanuals.com>

<http://www.4manuals.cc>

<http://www.manual-lib.com>

<http://www.404manual.com>

<http://www.luxmanual.com>

<http://aubethermostatmanual.com>

Golf course search by state

<http://golfingnear.com>

Email search by domain

<http://emailbydomain.com>

Auto manuals search

<http://auto.somanuals.com>

TV manuals search

<http://tv.somanuals.com>