

YP-R0

MP3 Player user manual

imagine the possibilities

Thank you for purchasing this Samsung product. To receive a more complete service, please register your product at



www.samsung.com/register



Using this manual

- Some of the contents in this manual may differ from your MP3 player depending on the firmware installed. Some of the contents may be changed without prior notice.
- Your MP3 player and screens may differ from the illustrations in this manual.
- To view the special features of your MP3 player, see "Special features of your MP3 player" on page 3.
- To view troubleshooting, see "Troubleshooting" on page 48.

Icons used in this manual

Icon	Description
 Note	Notes, usage tips, or additional information
 Caution	Safety warnings and precautions
< >	Menu names or text on the screen ; for example: <Yes>
[]	Buttons; for example: [↵] (represents the Back button)

Safety information

This manual describes how to properly use your new MP3 player. Read it carefully to avoid damaging the player and injuring yourself. Pay particular attention to the following serious warnings.

PROTECT YOURSELF



CAUTION

- Do not disassemble, repair, or modify this product on your own.



CAUTION

- Do not get the product wet or drop it in water. If the product gets wet, do not switch it on because you could get an electric shock.
- Do not use the product during a thunderstorm, as it may cause malfunction or a risk of electric shock.



CAUTION

- Do not use the earphones while you are driving a bicycle, automobile or motorcycle.
It can cause a serious accident, and furthermore, is prohibited by law in some areas.
Using the earphones while walking or jogging on a road, in particular, on a crosswalk can lead to a serious accident.
- For your safety, make sure the earphone cable does not get in the way of your arm or other surrounding objects while you are taking exercise or walking.



WARNING

- Do not place the product in damp, dusty, or sooty areas because these environments could lead to fire or electric shock.



WARNING

- Do not use the product if the screen is cracked or broken. Broken glass or acrylic could cause injury to your hand or face. Bring the product to a Samsung service centre to replace the screen. Damage caused by careless handling will void the warranty.

PROTECT YOURSELF



WARNING

- Using earphones or headphones for an extended time may cause serious damage to your hearing. If you are exposed to sound louder than 85db for an extended time, you may adversely affect your hearing. The louder the sound is, the more seriously damaged your hearing may be (an ordinary conversation is between 50 to 60 db and road noise is approximately 80 db). You are strongly advised to set the volume level to medium (the medium level is usually less than 2/3 of the maximum).
- If you feel a ringing in your ear(s), lower the volume or stop using the earphones or headphones.



WARNING

- Battery shall not be exposed to excessive heat such as sunshine, fire or the like.

PROTECT YOUR MP3 PLAYER



WARNING

- Do not leave the player in temperatures above 35° C (95° F), such as a sauna or a parked car.
- Do not cause excessive impact on the player by dropping it.
- Do not place heavy objects on top of the player.
- Prevent any foreign particles or dust from entering into the product.
- Do not place the product near magnetic objects.



CAUTION

- Be sure to backup important data. Samsung is not responsible for data loss.
- Use only accessories provided by or approved by Samsung.



CAUTION

- Do not spray water on the product. Never clean the product with chemical substances such as benzene or thinner, as it may cause fire, electric shock or deteriorate the surface.



- Failure to follow these instructions may lead to physical injuries or damage to the player.



- When printing this user manual, we recommend that you print in color and check "Fit to Page" in the print option for better viewing.

Special features of your MP3 player



Listen to true three-dimensional sound with the Samsung Digital Natural Sound engine (DNSe™)



Download and play high-quality videos in various formats



Play a slideshow with your pictures and use your player as a digital frame



Use the text viewer to open and view text documents without corruption



Listen to your favourite radio stations anytime



Use memory cards to extend the capacity of your player and store more contents

YP-R0

★ Contents



6 Use basic functions

- 7 What's included
- 8 Your MP3 player
- 10 Connect to a PC and charge the battery
- 12 Turn your player on and lock the buttons
- 13 Access menus from the main menu screen
- 14 Enter text



15 Manage media files

- 16 Download media files
- 16 Supported file formats and PC requirements
- 17 Download files with EmoDio
- 18 Download files using your player as a removable disk
- 19 Disconnect your player from a PC
- 20 Manage files



21 Play video and music

- 22 VIDEOS
- 22 Play video files
- 24 Use the video options
- 25 MUSIC
- 25 Listen to music
- 28 Create your own playlists
- 29 Use the music options



30 Use additional applications

- 31 PICTURES
 - 31 View pictures
 - 32 Play a slideshow
 - 32 Set a picture as a wallpaper
- 33 TEXTS
 - 33 View text files
 - 34 Insert a bookmark
 - 34 Change the background style
- 35 FM RADIO
 - 35 Listen to the FM radio
 - 36 Save radio stations
 - 37 Use the FM radio options
- 38 DATACASTS
- 39 MICRO SD
 - 39 Insert a memory card (optional)
 - 40 Manage files in a memory card



41 Customise settings

- 42 Settings
- 43 Sound settings
- 43 Display settings
- 43 Language settings
- 44 Date and time settings
- 44 System settings



46 Appendix

- 47 Maintenance of your player
- 48 Troubleshooting
- 50 Specifications
- 52 License
- 53 Contact Samsung World Wide



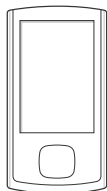
Use basic functions

Learn to perform basic operations with your player.

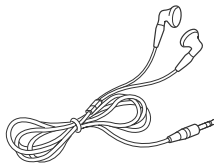
What's included	7
Your MP3 player	8
Connect to a PC and charge the battery.....	10
Turn your player on and lock the buttons	12
Access menus from the main menu screen	13
Enter text	14

What's included

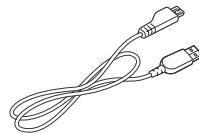
Check your product box for the following items:



MP3 player



Earphones



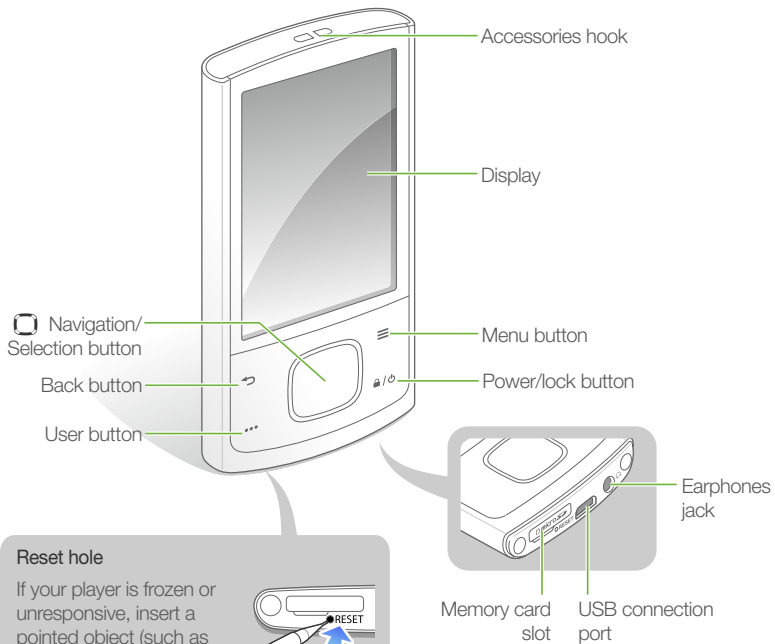
USB cable



Note

- The items supplied with your player may appear different from the illustrations in this manual.
- You can obtain additional accessories from your local Samsung dealer.

Your MP3 player



Reset hole








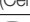




If your player is frozen or unresponsive, insert a pointed object (such as a toothpick or paper clip) into the reset hole.

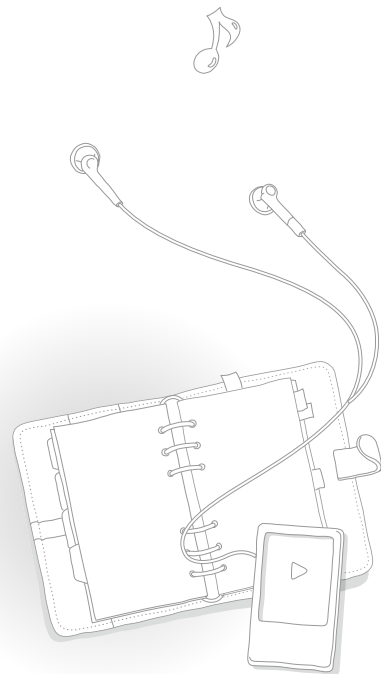
The system will be initialised.

You can also reset your player by pressing and holding [Power/lock] for more than 10 seconds.



Button functions

Button	Function
 Back	<ul style="list-style-type: none"> • Return to the previous screen • Return to the main menu screen (press and hold)
 Menu	Open a list of options available in the current menu
 User	<ul style="list-style-type: none"> • Rewind 10 seconds during video playback • Repeat a section of a track during music playback • Zoom in on the picture screen • Change the font size on the text screen
 Power/lock	<ul style="list-style-type: none"> • Turn your player on and off (press and hold) • Lock the buttons
 Navigation/ Selection	<ul style="list-style-type: none">  Scroll up, down, left, or right on the screen  Select the highlighted menu or option (Centre)  Begin or pause playback  Adjust the volume (Up/Down)  Skip to the previous/next file  Move to the previous/next page  Search backward/forward (press and hold)



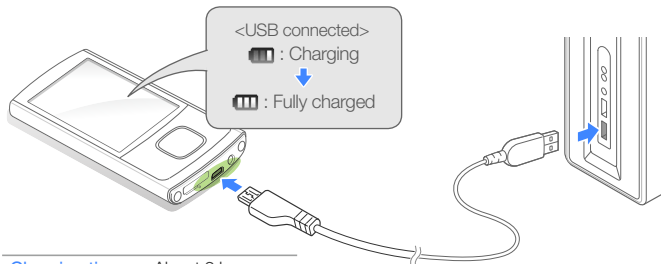
Connect to a PC and charge the battery

Connect your player to a PC and charge the battery before you use your player for the first time or when you have not used it for a long time.

Caution

The rechargeable battery incorporated in this product is not user replaceable. For information on its replacement, please contact your service provider.

- 1 Connect the smaller end of the USB cable to the USB connection port at the bottom of your player.
- 2 Connect the larger end of the USB cable to the USB port of a PC.



Charging time About 3 hours

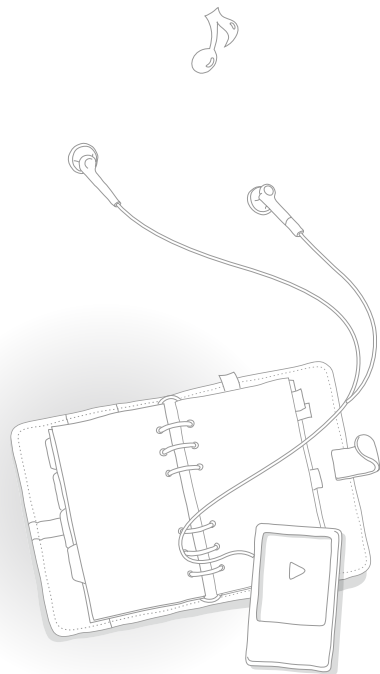
- 3 When the battery is fully charged, unplug the USB cable from your player and the PC.

About batteries

- Charge and store the battery at 5° C ~ 35° C (41° F ~ 95° F).
- Do not charge the battery for more than 12 hours or leave the battery fully discharged for a long time. Doing so may shorten the battery life.
- Depending on how you use your player, actual battery life may vary and may be shorter than specified.

Note

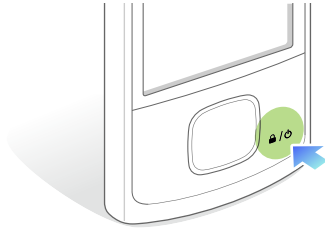
- The charging time may differ depending on your PC's capabilities.
- If you want to charge the battery on your laptop, make sure that the laptop's battery is full or the laptop is plugged into a power source.
- The player can only be charged by connecting to your PC with the USB cable. Do not use a separate USB AC Adapter as it may not charge the battery or allow proper operation of the player.



Turn your player on and lock the buttons

Turn your player on or off

Press and hold [🔒/⏻] to turn your player on or off.



Note

If you do not use your player for 5 minutes, it will automatically turn off.

Lock or unlock the buttons

Lock the buttons to prevent any unwanted operations while listening to music or playing videos. Press [🔒/⏻] to lock or unlock the buttons.

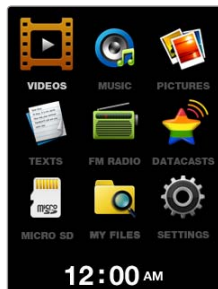
Note

When the buttons are locked, 🔒 will appear at the top of the screen.

Access menus from the main menu screen

Select menus from the main menu screen.

When you turn on your player, the main menu screen appears and you can access menus or functions from the main menu screen.




▲ Main menu screen

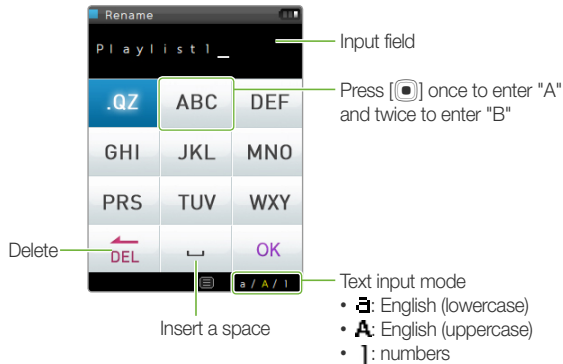
- 1 In the main menu, use [◀] to scroll to a menu you want and press [▶].
- 2 Press [◀] to scroll to an item and press [▶].
- 3 Use the menu you select.
- 4 Press [↶] to return to the previous screen.
 - Press and hold [↶] to return to the main menu screen.

Enter text

Enter text using the virtual keyboard.

To rename a playlist, for example:

- 1 Select a music playlist, and then press [≡] and select <Rename>. See page 28.
- 2 Select a button which has a character you want to enter.
 - To delete characters, select .
 - To change the text input mode, press [≡].



- 3 When you are finished, select <OK>.



Manage media files

Download media files to your player, and search for or delete files stored in your player.

Download media files	16
Manage files	20

Download media files





Download media files from a PC to your player.

Caution

To avoid damage to your player and corruption of your files, do not disconnect the USB cable while files are being transferred.

Supported file formats and PC requirements

Supported files

Menu	Supported files
 VIDEOS	Video files
 MUSIC	Music files
 PICTURES	Image and picture files
 TEXTS	Text files

Note

For supported file formats, see "Specifications" on page 50.

Recommended PC requirements

CPU	Pentium 500 MHz or higher
Operating System	Windows XP/Vista
Others	<ul style="list-style-type: none"> Resolution 1024 X 768 or higher Microsoft DirectX 9.0 or later Internet Explorer 6.0 or later

Download files with EmoDio

You can easily download various media files with EmoDio.



Note

- For information about installing EmoDio on a PC, refer to the Quick Start Guide supplied with your player.
- EmoDio will be regularly upgraded for peak performance. Some features of EmoDio may change without prior notice.

1 Connect your player to a PC using the USB cable.

- See page 10 to connect the player to your PC.
- When the player is connected to your PC, EmoDio launches automatically on your PC.

2 Click <My PC> on the main screen of EmoDio.

3 Click <Add Folder> or <Add File> at the bottom of the My PC screen.

- The list of the files stored in your PC appears.

4 Select a folder or file you want.

5 Select a file you want on the My PC screen and click .

- The selected file is copied to your player.

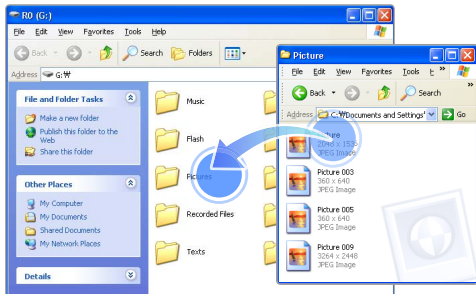


Note

- You cannot use your player when connected to a PC.
- If you connect your player to a PC when the player's battery is low, the battery will be charged for a few minutes before your player will be connected to the PC.
- If you connect your player to a PC via a USB hub, the PC may not recognise your player. Connect your player directly into the USB port of a PC.
- When you format your player on a PC, use the FAT32 system. In Windows Vista, click <Restore device defaults> and then format your player.
- Music recognition technology and related data are provided by Gracenote® and Gracenote CDDB® Music Recognition ServiceSM.
- CDDB is a registered trademark of Gracenote. The Gracenote logo and logotype, the Gracenote CDDB logo and logotype, and the "Powered by Gracenote CDDB" logo are trademarks of Gracenote. Music Recognition Service and MRS are service marks of Gracenote.

Download files using your player as a removable disk

- 1 Connect your player to a PC using the USB cable.
- 2 On your PC, open <My Computer> and then the <R0> folder.
- 3 Select a folder you want.
- 4 Copy files from the PC to your player.



Note

- The order of files on your PC will differ from the order of files in your player.
- Your player restricts playback of files protected by a DRM (Digital Rights Management) system.

What is DRM?

Digital Rights Management (DRM) is a technology and service to prevent illegal copies of the digital contents and protect the profit and rights of copyright holders or content producers.

Disconnect your player from a PC

Carefully follow the steps below when disconnecting your player from a PC to avoid data loss or damage to your player.

1 Click  on the Windows taskbar.



2 Click the pop-up message.

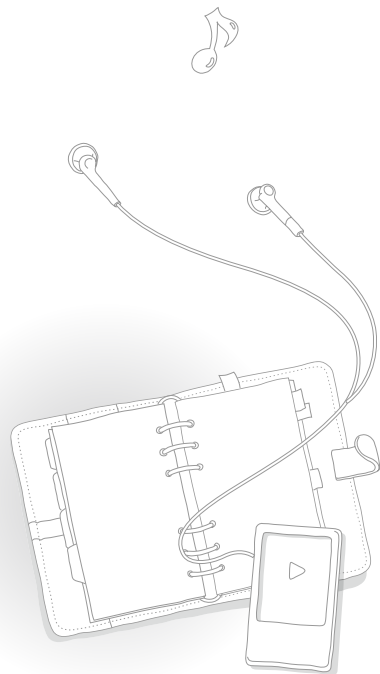


3 Unplug the USB cable from your player and the PC.



Caution

- To avoid damage to your player and corruption of your files, do not disconnect the USB cable while files are being transferred.
- Do not disconnect your player when playing files stored in your player on a PC. Make sure that you stop playback and then disconnect your player from a PC.






Manage files

Search for files in folders and delete files from your player.

Search for files

- 1 In the main menu, select .
- 2 Select a folder from the list.



- 3 Scroll through the file list.
- 4 Select a file you want.

Delete files

- 1 Select a folder from the list.
- 2 Select a file you want to delete and press [≡].
- 3 Select <Delete>.
- 4 Select <Yes> from the pop-up window.



Play video and music

Transfer music and video files to your player using the EmoDio program or a removable disk, and then play high-quality video files and listen to music in excellent 3D surround sound.

VIDEOS	22
MUSIC.....	25











VIDEOS

Play video files in your player.

To download files, see "Download media files" on page 16.

Play video files

- 1 In the main menu, select .
- 2 Select a video file from the list.
 - The screen changes to landscape mode.
- 3 Control playback using the following buttons. See "Video playback screen."

To	Do this
Skip to the previous file or the next file	Press []/  • If you press [] 3 seconds after the file plays, the playback will restart
Search backward or forward in a file	Press and hold []/ 
Rewind 10 seconds	Press []
Pause or resume playback	Press []

(While in landscape mode)



Note

- When you download unsupported files to your player with EmoDio, EmoDio will automatically convert the file formats so you can play them in your player.
- You can play subtitle files (.smi) with video files in your player. Subtitle files must be saved with video files to play in the same folder and the file name must be the same as the video file.

Video playback screen



No.	Description
1	File name
2	Playing status
3	Elapsed playing time / Total playing time
4	Playing progress bar

Play a video from a chapter

Press and hold [⏮] during video playback. Your player will split the video file into 15 chapters and capture still images from each chapter. When you select one of the still images, the video will begin playback from that point.

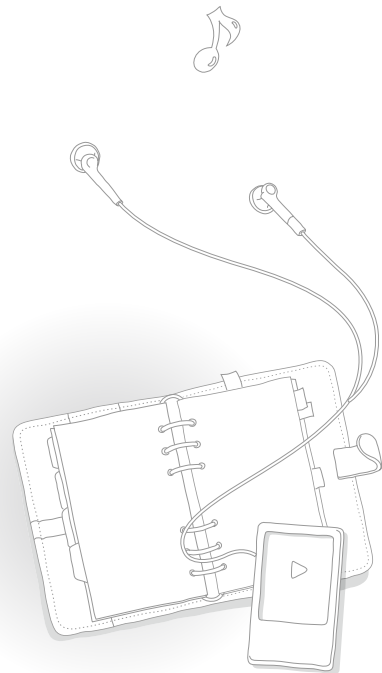


Select to return to the previous screen

Use the video options

- 1 During video playback, press [≡].
- 2 Customise the following options.

Option	Description
Brightness	Adjust the brightness of the screen.
DNSe	Select appropriate sound effects for videos.
Mosaic Search	Divide a video file into 15 chapters. You can select one of the chapters and start playback from that chapter.





MUSIC

Play music files stored in your player.

To download files, see "Download media files" on page 16.



Note

If the file library is updated, your player will clear the list of files displayed in <Recently Added> and <Most Played>.

Listen to music


Music files are categorised in folders by type. You can easily find a music file you want.







Music category	Function
Artists	Display files by artist.
Albums	Display files by album.
Songs	Display files by file name (in the order of special characters, numbers, and alphabets).
Genres	Display files by genre.
Playlists	Display playlists you created.
Recently Added	Display files you recently downloaded.
Most Played	Display files you play most often.
Music Browser	Display all files in the Music folder.
Unknown	Display files that have no track information (ID3 tag).

What is ID3 tag?

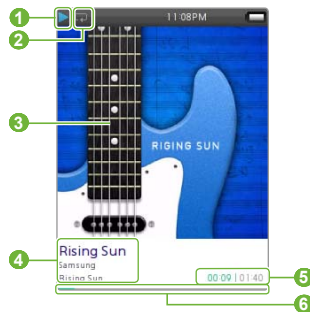
ID3 tag is a metadata container attached to MP3 files. It includes information for the music, such as the title, artist, album, or track number, which can be displayed on a music player's screen during playback.

Play music files

- 1 In the main menu, select .
- 2 Select a music category.
 - To play the file you last played, select <Now Playing>.
- 3 Select a file to play.
- 4 Control playback by using the buttons. See "Music playback screen."

To	Do this
Skip to the previous or next file	Press  /  • If you press  3 seconds after the file plays, the playback will restart
Search backward or forward	Press and hold  / 
Pause or resume playback	Press 

Music playback screen



No.	Description
1	Playing status
2	Repeat mode
3	Playback image
4	Song title, artist, album title
5	Elapsed playing time / Total playing time
6	Playing progress bar

Repeat a section of a track

You can select a section of a track to repeat.

- 1 Press [**•••**] at the beginning of the section you want to repeat.
 - <A →> displays at the top of the screen.
- 2 Press [**•••**] at the end of the section you want to repeat.
 - <A ↔ B> displays at the top of the screen. Your player repeats the marked section.
- 3 To cancel repeating, press [**•••**] again.

**Note**

You can set the end point 3 seconds after the start point.

Apply a sound effect (DNSe)

- 1 During music playback, press [**≡**].
- 2 Select <DNSe>.
- 3 Select a sound effect you want.
 - If you select <Auto>, your player will search the track information (ID3 tag) and automatically select an appropriate effect.
 - To select your own equaliser, select <myDNSe 1> or <myDNSe 2>. See "myDNSe" on page 43.

What is DNSe?

Digital Natural Sound Engine (DNSe) is a group of sound effects for MP3 players, developed by Samsung. It provides various sound settings to enhance the music you are listening to.

Create your own playlists

You can create your own playlist by adding music files you want. There are 5 default playlists.

Add music files to a playlist

- 1 From the music category list, select a file you want to add to a playlist and press [≡].
- 2 Select <Add to Playlist>.
- 3 Select a playlist to add the file.



Note

To add the currently playing file to a playlist, press [≡] and select <Add to Playlist>.

Delete music files from a playlist


- 1 From the music category list, select <Playlists>.
- 2 Select a playlist that has a file you want to delete.
- 3 Select a file you want to delete and press [≡].
- 4 Select <Delete from Playlist>.
 - To delete all files, select <Delete All from Playlist>.
 - The file will not be deleted from your player even if it is deleted from the playlist.


Rename a playlist


- 1 From the music category list, select <Playlists>.
- 2 Select a playlist you want to rename and press [≡].
- 3 Select <Rename>.
- 4 Change the name of the playlist. For entering text, see page 14.

Use the music options

- 1 During music playback, press [≡].
- 2 Customise the following options.

Option	Description
Add to Playlist	Add the currently playing music file to the playlist.
DNSe	Select appropriate sound effects for music. <ul style="list-style-type: none"> – <Play Mode>: Change the repeat mode. – <Play Speed>: Change the playback speed. – <Skip Interval>: Set the interval when you press [⏮] during music playback.
Play Option	<div style="border: 1px solid #ccc; padding: 5px; margin-top: 10px;">  Note Some files may not skip at the interval you selected. </div>

Option	Description
Music Play Screen	Change the image that displays during music playback. <div style="border: 1px solid #ccc; padding: 5px; margin-top: 10px;">  Note Your player supports less than 2 MB of cover images. </div>

	<div style="border: 1px solid #ccc; padding: 5px;">  Note You cannot select a sound effect and change the playback speed if you are playing a music file in Ogg Q10 format. </div>
--	---



Use additional applications

Learn how to work with your player's additional applications.

PICTURES.....	31
TEXTS	33
FM RADIO	35
DATACASTS	38
MICRO SD	39




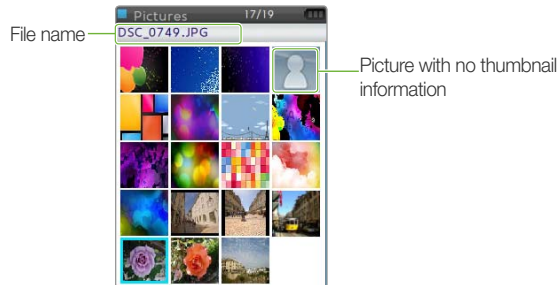
PICTURES

View pictures stored in your player.

To download files, see "Download media files" on page 16.

View pictures

- 1 In the main menu, select .
- 2 Browse pictures.



- 3 Select a picture you want. The picture displays on the full screen.

- 4 View the picture.



To	Do this
Move to the previous or next file	Press [<input type="leftbutton"/> / <input type="rightbutton"/> .
Zoom in	Press [<input type="dial"/>]. <ul style="list-style-type: none"> • Press [<input type="leftbutton"/>>] to move on the enlarged picture • Press [<input type="rightbutton"/><] to exit the zoom mode



Note

- If the picture size is large, it may take some time to display.
- If you press [] on the picture screen while a music file is playing or paused, the mini player will appear. If you were listening to the FM radio, the FM radio will start automatically when the mini player appears.

Play a slideshow

You can create and play a slideshow with your pictures.

- 1 From the file list, press [].
- 2 Select <Start Slideshow>.
- 3 View pictures in a slideshow.
- 4 To stop slideshow, press [].

Set a picture as a wallpaper

- 1 From the file list, select a picture and press [].
- 2 Select <Set as My Skin>.
- 3 Select <Yes> from the pop-up window.




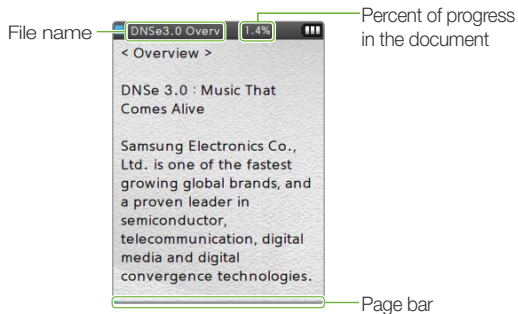
TEXTS


You can use the text viewer to view text files (.txt) stored in your player.

To download files, see "Download media files" on page 16.


View text files

- 1 In the main menu, select .
- 2 Select a text file from the list.
- 3 View the document.



To	Do this
Move to the previous or next page	Press []/ 
Change the font size	Press [

Note

If you press [] on the text screen while a music file is playing or paused, the mini player will appear. If you were listening to the FM radio, the FM radio will start automatically when the mini player appears.

Insert a bookmark

You can insert a bookmark on the page you want and go to the bookmark to view that page of a document.

- 1 Go to the page you want to bookmark and press [≡].
- 2 Select <Bookmark> and then <Add Bookmark>.
 - A bookmark is inserted to the top left of the screen.



Note

- You can insert one bookmark per text file.
- To go to a bookmark, press [≡] and select <Bookmark> and then <Go to Bookmark>.
- To delete a bookmark, press [≡] and select <Bookmark> and then <Delete Bookmark>.

Change the background style

You can change the background style of the text viewer.

- 1 On the text screen, press [≡].
- 2 Select <Viewer Theme>.
- 3 Press [⊙] to change the background style.



FM RADIO







You can listen to the FM radio as well as save radio stations.

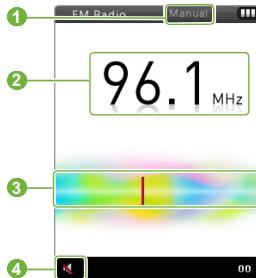



Note

You must connect the earphones to your player to listen to the FM radio. The earphones serve as a radio antenna.

Listen to the FM radio

- 1 In the main menu, select .
- 2 Press [] to scan the radio stations.
 - Press []/] to scroll through radio frequencies.
 - Press and hold []/] to scan the available stations automatically.
- 3 Listen to the FM radio.



- 1 Radio mode (Manual mode/Preset mode)
- 2 Frequency for the current station
- 3 Frequency bar
- 4 Mute indicator
– Press [] to mute or unmute the FM radio



Note

The FM radio may not tune frequencies for stations correctly depending on the signal status of your current region.

Save radio stations

You can save your favourite radio stations to easily access them.

Save the current radio station

- 1 In Manual mode, press [≡].
- 2 Select <Add to Preset>.

Save radio stations automatically

You can automatically search for available radio stations and save them as your favourites. You can save up to 30 radio stations.

- 1 In Manual mode, press [≡].
- 2 Select <Auto Preset>.
- 3 Select <Yes> from the pop-up window.
 - Automatic tuning begins. The radio stations located are saved in your favourites.

Listen to a favourite radio station

- 1 In Manual mode, press [≡].
- 2 Select <Go to Preset Mode>.



- 3 Select a radio station you want.

Use the FM radio options

You can change options for using the FM radio.

- 1 From the FM radio screen, press [≡].
- 2 Customise the following options.

Option	Description
Go to Preset Mode*	Switch to Preset mode
Go to Manual Mode**	Switch to Manual mode
Add to Preset*	Save the current radio station.
Delete from preset**	Delete a saved radio station.
Auto Preset	Search for and save available radio stations automatically (up to 30).



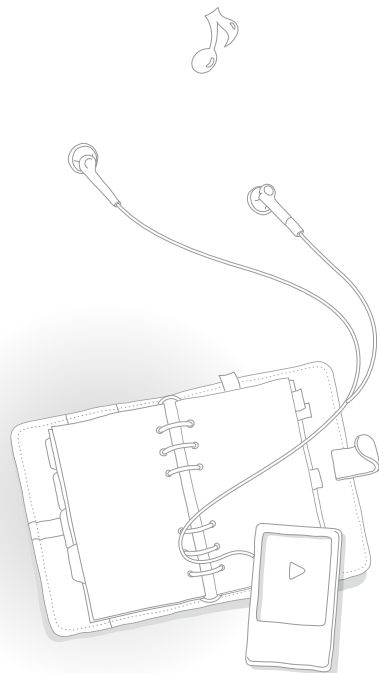
Note

- This option may not be available depending on your region.
- If you change the region, the previously saved stations will be deleted.

FM Region

* Available only in Manual mode

** Available only in Preset mode





DATACASTS

When you have registered RSS addresses of your favorite news website, UCC, or blogs on EmoDio, you can view various contents.




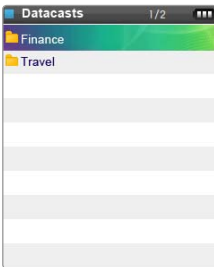
Note

For more information about Datacasts, see the Help of EmoDio.

What is RSS?

RSS is a standardised XML file format used to publish and deliver to users or readers frequently-updated works, such as news or blog entries.

- 1 In the main menu, select .
- 2 Select a channel folder you want.



- 3 Select the content you want to view.
- 4 View the content.

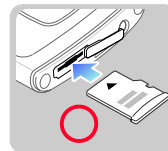
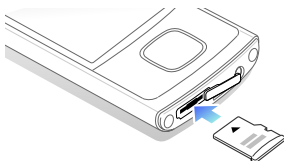



MICRO SD

To store additional files, you must insert a memory card. You can search for files in the memory card and delete files from the memory card.

Insert a memory card (optional)

- 1 Open the cover of the memory card slot and insert a memory card.
 - Insert the memory card with the label side facing up.



- 2 Push the memory card in the memory card slot until it locks in place.
 - When the memory card is correctly inserted,  will appear at the top of the main menu screen.

Caution


- Your player accepts microSD™ or microSDHC™ memory cards from 1 GB to 16 GB. (Use only memory cards compatible with your player. Depending on the manufacturer, some memory cards may not be compatible with your player.)
- Do not insert a memory card in the wrong direction.
- Do not remove a memory card from your player while in use.
- Remember to make backup copies of all important data stored on memory cards. The manufacturer's warranty does not cover loss of data that results from user actions.

Remove a memory card

To remove a memory card, push it gently until it disengages from the player, and then pull the memory card out of the memory card slot.

Manage files in a memory card

Search for files


- 1 Insert a memory card.
- 2 In the main menu, select .
 - The list of folders saved in the memory card appears.
- 3 Select a folder you want.
- 4 Scroll up or down on the file list.
- 5 Select a file you want.

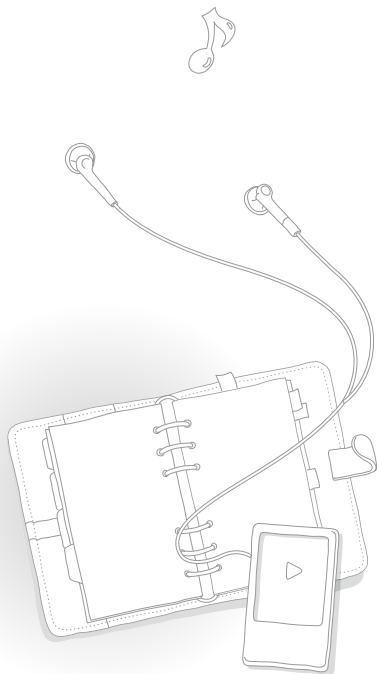


Note

You cannot open files unsupported by your player.

Delete files

- 1 Select a folder you want from the inserted memory card.
- 2 Select a file you want to delete and press .
- 3 Select <Delete>.
- 4 Select <Yes> from the pop-up window.





Customise settings


Change your player's settings to match your preferences.

Settings	42
Sound settings	43
Display settings	43
Language settings	43
Date and time settings	44
System settings	44



Settings

You can change your player's settings.

- 1 In the main menu, select .
- 2 Select a setting menu you want to customise.

Menu	Description
Sound	Set sound settings
Display	Set display settings
Language	Set language settings
Date&Time	Set the current time and date
System	Set system settings

- 3 Select an option.
- 4 Change the settings.

Sound settings

Menu	Description
Street Mode	Set to make the music sound clearer by filtering out ambient noise.
Audio Upscaler	Set to upscale low resolution audio files for improved sound quality.
myDNSe	Set up your own equaliser (DNSe) to customise sounds to your preference.
Beep Sound	Turn the beep sound on or off when you press the buttons.
Wise Volume	Set to limit the volume of the earphones to protect your hearing. <ul style="list-style-type: none"> – <Off>: You can adjust the volume as you want. If you increase the volume over level 15 and restart your player, the player will turn on at volume level 15 to protect your hearing. – <On>: Your player displays a warning message when you are exposed to a high level of volume for a long period of time. Your player automatically decreases the volume to a moderate level.
Master EQ	Optimise the sound settings for your earphones. Adjust frequencies for the equaliser.

Display settings

Menu	Description
Menu Design	Change the style of the main menu screen.
Theme Color	Select an effect for highlighting the selected item on the list.
Font	Select a font type for the display text.
Display Off Time	Set how long the screen stays on when not in use.
Brightness	Adjust the brightness of the screen.
Reset My Skin	Restore the wallpaper image.

Language settings


Menu	Description
Menu Language	Select a language for the display text.
Contents Language	Select a language to display the contents stored in your player.


Date and time settings


Set the current time and date.

Scroll to a unit and press [OK] to change the time or date. To save the time and date, press [Enter].


System settings

Menu	Description
My Info	<p>Enter personal information, such as your name and birthday.</p> <div data-bbox="234 539 706 712" style="border: 1px solid #ccc; padding: 10px; margin-top: 10px;"> <p> Note</p> <p>Your name will be displayed on the screen when your player is turned on. On your birthday, the message "Happy birthday" will be displayed.</p> </div>
Sleep	Set to automatically turn off your player after a specified period of time.

Menu	Description
Library Update	Update the file library. Use this option after changing the language to display the contents (select <Settings> → <Language> → <Contents Language>) when file names do not display correctly in your player.
Default Set	Restore all settings to the factory settings. Delete all data and files stored in your player.
Format	<div data-bbox="918 407 1391 578" style="border: 1px solid #ccc; padding: 10px; margin-top: 10px;"> <p> Note</p> <p>Remember to make backup copies of all important data stored in your player. The manufacturer's warranty does not cover loss of data that results from your use of the player.</p> </div>

Menu	Description
	<p>Check the DivX registration code for your player.</p> <div style="border: 1px solid #ccc; padding: 10px; margin-top: 10px;"> <p> Note</p> <p>ABOUT DIVX VIDEO: DivX® is a digital video format created by DivX, Inc. This is an official DivX Certified device that plays DivX video. Visit www.divx.com for more information and software tools to convert your files into DivX video.</p> <p>ABOUT DIVX VIDEO-ON-DEMAND: This DivX Certified® device must be registered in order to play DivX Video-on-Demand (VOD) content. To generate the registration code, locate the DivX VOD section in the device setup menu. Go to vod.divx.com with this code to complete the registration process and learn more about DivX VOD.</p> <p>Devices certified to play DivX video at the Mobile profile: “DivX Certified to play DivX® video up to 320x240”</p> </div>

DivX
Registration
code

Menu	Description
	<p>Check the system information of your player.</p> <ul style="list-style-type: none"> – <Firmware>: View the version of the firmware installed in your player. – <Memory>: View the total amount of memory, and the amount of memory being used and remaining.
About	<div style="border: 1px solid #ccc; padding: 10px; margin-top: 10px;"> <p> Note</p> <p>Regarding the Built-In Memory 1 GB = 1,000,000,000 bytes : actual formatted capacity may be less as the internal firmware uses a portion of the memory.</p> </div>



Appendix

View the maintenance, specifications, and troubleshooting for your player.

Maintenance of your player	47
Troubleshooting	48
Specifications	50
License	52
Contact Samsung World Wide	53

Maintenance of your player

Carefully read the following to properly clean, store, or dispose of your player.



Cleaning

- When your player is dirty, wipe your player with a soft, clean and dry cloth.
 - Do not apply cleaners to your player's surface. This may cause damage or affect the performance of the player.
 - Do not clean your player with gasoline, benzene, thinner, WD-40, or other chemicals. This may cause damage to your player's surface.
-



Storing

Store your player in a well-ventilated area.



Disposing

- Dispose of wrapping materials, batteries, and electronic devices separately.
 - The wrapping materials include paper and two kinds of plastics (PC, PE).
-

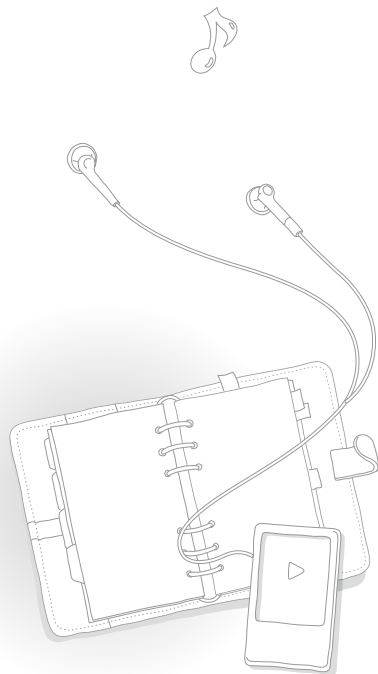
Troubleshooting

When you have a trouble using the player, try the following before contacting a service centre.

Problem	Solution
My player will not turn on.	<ul style="list-style-type: none"> Your player will not turn on if the battery is completely drained. Recharge the battery and turn the player on again. Press the reset button to reset your player.
The buttons do not work.	<ul style="list-style-type: none"> Check if the buttons are locked. Check if the buttons correspond to the functions you want to activate. Press the reset button to reset your player.
The screen does not display anything.	<ul style="list-style-type: none"> The screen may not be visible under the direct rays of the sun. The screen turns off automatically after the period of time you set in <Display Off Time> has elapsed.
My player turns off automatically.	If you do not use your player for 5 minutes after you pause the playback, it will automatically turn off.
The battery running time is different from what is written in the user manual.	<ul style="list-style-type: none"> The battery running time may differ depending on the current sound mode or display settings. The battery running time may shorten when your player was left in a high or low temperature.
EmoDio will not work on a PC.	Check if your PC meets PC requirements. See "Recommended PC requirements."

Problem	Solution
My player will not connect to a PC.	Run Windows Update on the PC. Select key updates and service packs and update all. When the update is completed, reboot the PC and reconnect.
The file transfer is too slow.	Format your player in <Settings> → <System> → <Format> and try again. End all programs you are not using. Running multiple programs simultaneously can slow down the file transfer rate.
My player will not play any files.	<ul style="list-style-type: none"> Check if any playable files are stored in your player. Check the size of the files to play. Your player will not play more than 2 GB files. Check if the files are damaged. Check the battery remaining.
I cannot download files to my player.	<ul style="list-style-type: none"> Check if the USB cable is correctly connected. Reconnect it. Check if the memory is full. Press the reset button to reset your player.
Files or data are missing.	Check if you disconnected the USB cable while transferring files or data. This can cause data loss or fatal errors in your player. Samsung is not responsible for any damages resulting from data loss.

Problem	Solution
The playing time does not display correctly during playback.	This is normal if the currently playing file is of the VBR (Variable Bit Rate) format.
The file name does not display correctly.	Change the language setting in <Settings> → <Language> → <Contents Language> and then update the file library.
My player is getting hot to the touch.	Charging the battery can heat up your player. It does not affect the player's life or capabilities.
My player does not play a video file but display an error message.	Retransfer the video file with EmoDio.

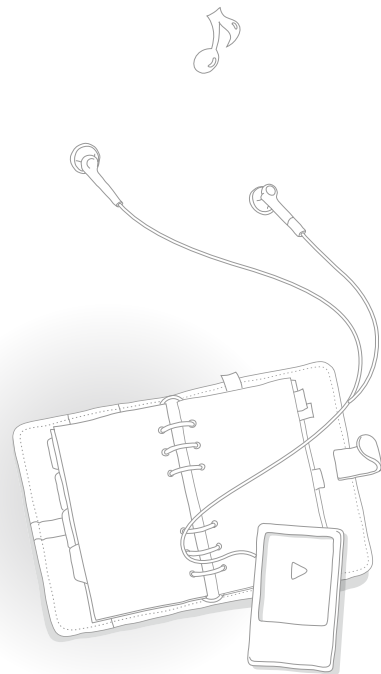


Specifications

Model Name	YP-R0		
Rating	DC 5.0V / 1A		
Audio	<ul style="list-style-type: none"> • MPEG1/2/2.5 Layer 3 (8 kbps ~ 320 kbps, 8 kHz ~ 48 kHz) • WMA (12 kbps ~ 320 kbps, 16 kHz ~ 48 kHz) • Ogg (32 kbps ~ 400 kbps, Q0 ~ Q10, 8 kHz ~ 48 kHz) • AAC-LC (8 kbps ~ 320 kbps, 8 kHz ~ 48 kHz) • AAC+ (8 kbps ~ 320 kbps, 8 kHz ~ 48 kHz) • Enhanced-AAC-Plus (8 kbps ~ 320 kbps, 8 kHz ~ 48 kHz) • FLAC (level 0 ~ 8, 16 kHz ~ 48 kHz) • WAV (wav standard, 8 kHz ~ 48 kHz) 		
File		Video	Audio
	AVI/SVI	<ul style="list-style-type: none"> • MPEG4 (Max.720 X 480) Advanced Simple Profile@Level 5 • Divx3/4/5/(Max. 720 X 480) 	MP3/AAC/AAC+
		<ul style="list-style-type: none"> • Xvid (Max. 720 X 480) • H.264/AVC (Max. 720 X 480) High Profile@Level3.0 	
	Video	WMV9 (MAX 720 X 480) Advanced Profile@level1	WMA
		<ul style="list-style-type: none"> • MPEG4 (Max.720 X 480) Advanced Simple Profile@Level 5 • H.264/AVC (Max. 720 X 480) High Profile@Level 3.0 	MP3/AAC/AAC+
		WMV/ASF WMV9 (MAX 720 X 480) Advanced Profile@level1(vc1)	WMA
	MOV	<ul style="list-style-type: none"> • MPEG4 (Max.720 X 480) Advanced Simple Profile@Level 5 • H.264/AVC (Max. 720 X 480) High Profile@Level 3.0 	AAC/AAC+
Image	JPEG (Baseline, Progressive), BMP (MAX32Bit), PNG, Gif (89a/87a)		

Earphones Output	20 mW/Ch. (based on 16 Ω)	
Output Frequency Range	20 Hz ~ 20 kHz	
Signal to Noise Ratio	90 dB with 20 kHz LPF (based on 1 kHz, 0 dB)	
Supported Number of Files/Folders	File: Max. 5000 Folder: Max. 5000 (including File)	
Playing Time	Music: 30 hours (MP3 128 kbps, Volume level 15, Normal sound mode, Display off) Video: 6 hours (Brightness 3, Volume level 15, Normal sound mode, SVI)	
Temperature Range for Operation	-5° C ~ 35° C (23° F ~ 95° F)	
Case	Aluminum, Acrylic, Plastic	
Weight	60 g	
Dimensions (WxHxD)	52 X 93 X 8.8 mm	
FM Radio	FM T.H.D	1 %
	FM Signal to Noise Ratio	50 dB
	FM Useable Sensitivity	38 dB μ

* Some of the contents in this manual are subject to change without prior notice for further improvement.



License

The product player accompanying this user manual is licensed under certain intellectual property rights of certain third parties. This license is limited to private non-commercial use by end-user consumers for licensed contents.

No rights are granted for commercial use.

The license does not cover any product player other than this product player and the license does not extend to any unlicensed product player or process conforming to ISO/IEC 11172-3 or ISO/IEC 13818-3 used or sold in combination with this product player. The license only covers the use of this product player to encode and/or decode audio files conforming to the ISO/IEC 11172-3 or ISO/IEC 13818-3. No rights are granted under this license for product features or functions that do not conform to the ISO/IEC 11172-3 or ISO/IEC 13818-3.

Contact Samsung World Wide

If you have any questions or comments relating to Samsung products, please contact the SAMSUNG Customer Care Centre.

Country	Customer Care Centre ☎	Web Site
CANADA	1-800-SAMSUNG (726-7864)	www.samsung.com/ca
MEXICO	01-800-SAMSUNG (726-7864)	www.samsung.com/mx
U.S.A	1-800-SAMSUNG (726-7864)	www.samsung.com/us
ARGENTINE	0800-333-3733	www.samsung.com/ar
BRAZIL	0800-124-421, 4004-0000	www.samsung.com/br
CHILE	800-SAMSUNG (726-7864)	www.samsung.com/cl
NICARAGUA	00-1800-5077267	www.samsung.com/latin
HONDURAS	800-7919267	www.samsung.com/latin
COSTA RICA	0-800-507-7267	www.samsung.com/latin
ECUADOR	1-800-10-7267	www.samsung.com/latin
EL SALVADOR	800-6225	www.samsung.com/latin
GUATEMALA	1-800-299-0013	www.samsung.com/latin
JAMAICA	1-800-234-7267	www.samsung.com/latin
PANAMA	800-7267	www.samsung.com/latin
PUERTO RICO	1-800-682-3180	www.samsung.com/latin
REP. DOMINICA	1-800-751-2676	www.samsung.com/latin
TRINIDAD & TOBAGO	1-800-SAMSUNG (726-7864)	www.samsung.com/latin

Country	Customer Care Centre ☎	Web Site
VENEZUELA	0-800-100-5303	www.samsung.com/latin
COLOMBIA	01-8000112112	www.samsung.com.co
	02 201 2418	www.samsung.com/be (Dutch)
BELGIUM		www.samsung.com/be_fr (French)
CZECH REPUBLIC	800-SAMSUNG (800-726786)	www.samsung.com/cz
DENMARK	8-SAMSUNG (7267864)	www.samsung.com/dk
FINLAND	30-6227 515	www.samsung.com/fi
FRANCE	01 4863 0000	www.samsung.com/fr
GERMANY	01805 - SAMSUNG (726-7864 € 0,14/Min)	www.samsung.de
HUNGARY	06-80-SAMSUNG (726-7864)	www.samsung.com/hu
ITALIA	800-SAMSUNG (726-7864)	www.samsung.com/it
LUXEMBURG	02 261 03 710	www.samsung.com/lu
NETHERLANDS	0900-SAMSUNG (0900-7267864) (€ 0,10/Min)	www.samsung.com/nl
NORWAY	3-SAMSUNG (7267864)	www.samsung.com/no
POLAND	0 801 1SAMSUNG (172678), 022-607-93-33	www.samsung.com/pl

Country	Customer Care Centre	Web Site
PORTUGAL	80820-SAMSUNG (726-7864)	www.samsung.com/pt
SLOVAKIA	0800-SAMSUNG (726-7864)	www.samsung.com/sk
SPAIN	902-1-SAMSUNG (902 172 678)	www.samsung.com/es
SWEDEN	0771 726 7864 (SAMSUNG)	www.samsung.com/se
U.K	0845 SAMSUNG (7267864)	www.samsung.com/uk
EIRE	0818 717 100	www.samsung.com/ie
AUSTRIA	0810-SAMSUNG (7267864, € 0.07/min)	www.samsung.com/at
SWITZERLAND	0848-SAMSUNG (7267864, CHF 0.08/min)	www.samsung.com/ch
RUSSIA	8-800-555-55-55	www.samsung.ru
KAZAKHSTAN	8-10-800-500-55-500	www.samsung.com/kz_ru
UZBEKISTAN	8-10-800-500-55-500	www.samsung.com/kz_ru
KYRGYZSTAN	00-800-500-55-500	
TADJIKISTAN	8-10-800-500-55-500	
UKRAINE	8-800-502-0000	www.samsung.ua www.samsung.com/ua_ru
BELARUS	810-800-500-55-500	
MOLDOVA	'00-800-500-55-500	
LITHUANIA	8-800-77777	www.samsung.com/lt
LATVIA	8000-7267	www.samsung.com/lv

Country	Customer Care Centre	Web Site
ESTONIA	800-7267	www.samsung.com/ee
AUSTRALIA	1300 362 603	www.samsung.com/au
NEW ZEALAND	0800 SAMSUNG (0800 726 786)	www.samsung.com/nz
CHINA	400-810-5858, 010-6475 1880	www.samsung.com/cn
HONG KONG	3698-4698	www.samsung.com/hk www.samsung.com/hk_en
INDIA	3030 8282, 1800 110011, 1800 3000 8282	www.samsung.com/in
INDONESIA	0800-112-8888	www.samsung.com/id
MALAYSIA	1800-88-9999	www.samsung.com/my
PHILIPPINES	1-800-10-SAMSUNG (726-7864), 1-800-3-SAMSUNG (726-7864), 1-800-8-SAMSUNG(726-7864), 02-5805777	www.samsung.com/ph
SINGAPORE	1800-SAMSUNG (726-7864)	www.samsung.com/sg
THAILAND	1800-29-3232, 02-689-3232	www.samsung.com/th
TAIWAN	0800-329-999	www.samsung.com/tw
VIETNAM	1 800 588 889	www.samsung.com/vn
TURKEY	444 77 11	www.samsung.com/tr
SOUTH AFRICA	0860-SAMSUNG (726-7864)	www.samsung.com/za
U.A.E	800-SAMSUNG (726-7864), 8000-4726	www.samsung.com/ae

Open Source Announcement

Some software components of this product incorporate source code covered under the GNU General Public License (GPL) and BSD.

To obtain the source code covered under above licenses, please visit <http://opensource.samsungmobile.com/>.

Component	License
Linux Kernel 2.6.24	GPL 2.0
MSC application	GPL 2.0
Video for Linux Two header file	BSD 2.0

Below is the original English text of the GNU GPL and BSD.

GNU GENERAL PUBLIC LICENSE

Version 2, June 1991

Copyright (C) 1989, 1991 Free Software Foundation, Inc.
51 Franklin St, Fifth Floor, Boston, MA 02110-1301 USA

Everyone is permitted to copy and distribute verbatim copies of this license document, but changing it is not allowed.

Preamble

The licenses for most software are designed to take away your freedom to share and change it. By contrast, the GNU General Public License is intended to guarantee your freedom to share and change free software--to make sure the software is free for all its users. This General Public License applies to most of the Free Software Foundation's software and to any other program whose authors commit to using it. (Some other Free Software Foundation software is covered by the GNU Library General Public License instead.) You can apply it to your programs, too.

When we speak of free software, we are referring to freedom, not price. Our General Public Licenses are designed to make sure that you have the freedom to distribute copies of free software (and charge for this service if you wish), that you receive source code or can get it if you want it, that you can change the software or use pieces of it in new free programs; and that you know you can do these things.

To protect your rights, we need to make restrictions that forbid anyone to deny you these rights or to ask you to surrender the rights. These restrictions translate to certain responsibilities for you if you distribute copies of the software, or if you modify it. For example, if you distribute copies of such a program, whether gratis or for a fee, you must give the recipients all the rights that you have. You must make sure that they, too, receive or can get the source code. And you must show them these terms so they know their rights.

We protect your rights with two steps:

(1) copyright the software, and (2) offer you this license which gives you legal permission to copy, distribute and/or modify the software. Also, for each author's protection and ours, we want to make certain that everyone understands that there is no warranty for this free software.

If the software is modified by someone else and passed on, we want its recipients to know that what they have is not the original, so that any problems introduced by others will not reflect on the original authors' reputations.

Finally, any free program is threatened constantly by software patents.

We wish to avoid the danger that redistributors of a free program will individually obtain patent licenses, in effect making the program proprietary. To prevent this, we have made it clear that any patent must be licensed for everyone's free use or not licensed at all.

The precise terms and conditions for copying, distribution and modification follow.

TERMS AND CONDITIONS FOR COPYING, DISTRIBUTION AND MODIFICATION

- 0) This License applies to any program or other work which contains a notice placed by the copyright holder saying it may be distributed under the terms of this General Public License. The "Program", below, refers to any such program or work, and a "work based on the Program" means either the Program or any derivative work under copyright law: that is to say, a work containing the Program or a portion of it, either verbatim or with modifications and/or translated into another language. (Hereinafter, translation is included without limitation in the term "modification".) Each licensee is addressed as "you".
Activities other than copying, distribution and modification are not covered by this License; they are outside its scope. The act of running the Program is not restricted, and the output from the Program is covered only if its contents constitute a work based on the Program (independent of having been made by running the Program). Whether that is true depends on what the Program does.
- 1) You may copy and distribute verbatim copies of the Program's source code as you receive it, in any medium, provided that you conspicuously and appropriately publish on each copy an appropriate copyright notice and disclaimer of warranty; keep intact all the notices that refer to this License and to the absence of any warranty; and give any other recipients of the Program a copy of this License along with the Program. You may charge a fee for the physical act of transferring a copy, and you may at your option offer warranty protection in exchange for a fee.
- 2) You may modify your copy or copies of the Program or any portion of it, thus forming a work based on the Program, and copy and distribute such modifications or work under the terms of Section 1 above, provided that

you also meet all of these conditions:

- a) You must cause the modified files to carry prominent notices stating that you changed the files and the date of any change.
- b) You must cause any work that you distribute or publish, that in whole or in part contains or is derived from the Program or any part thereof, to be licensed as a whole at no charge to all third parties under the terms of this License.
- c) If the modified program normally reads commands interactively when run, you must cause it, when started running for such interactive use in the most ordinary way, to print or display an announcement including an appropriate copyright notice and a notice that there is no warranty (or else, saying that you provide a warranty) and that users may redistribute the program under these conditions, and telling the user how to view a copy of this License. (Exception: if the Program itself is interactive but does not normally print such an announcement, your work based on the Program is not required to print an announcement.)

These requirements apply to the modified work as a whole.

If identifiable sections of that work are not derived from the Program, and can be reasonably considered independent and separate works in themselves, then this License, and its terms, do not apply to those sections when you distribute them as separate works. But when you distribute the same sections as part of a whole which is a work based on the Program, the distribution of the whole must be on the terms of this License, whose permissions for other licensees extend to the entire whole, and thus to each and every part regardless of who wrote it.

Thus, it is not the intent of this section to claim rights or contest your rights to work written entirely by you; rather, the intent is to exercise the right to control the distribution of derivative or collective works based on the Program. In addition, mere aggregation of another work not based on the Program with the Program (or with a work based on the Program) on a volume of a storage or distribution medium does not bring the other work

under the scope of this License.

- 3) You may copy and distribute the Program (or a work based on it, under Section 2) in object code or executable form under the terms of Sections 1 and 2 above provided that you also do one of the following:
 - a) Accompany it with the complete corresponding machine-readable source code, which must be distributed under the terms of Sections 1 and 2 above on a medium customarily used for software interchange; or,
 - b) Accompany it with a written offer, valid for at least three years, to give any third party, for a charge no more than your cost of physically performing source distribution, a complete machine-readable copy of the corresponding source code, to be distributed under the terms of Sections 1 and 2 above on a medium customarily used for software interchange; or,
 - c) Accompany it with the information you received as to the offer to distribute corresponding source code. (This alternative is allowed only for noncommercial distribution and only if you received the program in object code or executable form with such an offer, in accord with Subsection b above.)

The source code for a work means the preferred form of the work for making modifications to it. For an executable work, complete source code means all the source code for all modules it contains, plus any associated interface definition files, plus the scripts used to control compilation and installation of the executable. However, as a special exception, the source code distributed need not include anything that is normally distributed (in either source or binary form) with the major components (compiler, kernel, and so on) of the operating system on which the executable runs, unless that component itself accompanies the executable. If distribution of executable or object code is made by offering access to copy from a designated place, then offering equivalent access to copy the source code from the same place counts as distribution of the source code, even though third parties are not compelled to copy the source along with the object code.

- 4) You may not copy, modify, sublicense, or distribute the Program except as expressly provided under this License. Any attempt otherwise to copy, modify, sublicense or distribute the Program is void, and will automatically terminate your rights under this License. However, parties who have received copies, or rights, from you under this License will not have their licenses terminated so long as such parties remain in full compliance.
- 5) You are not required to accept this License, since you have not signed it. However, nothing else grants you permission to modify or distribute the Program or its derivative works. These actions are prohibited by law if you do not accept this License. Therefore, by modifying or distributing the Program (or any work based on the Program), you indicate your acceptance of this License to do so, and all its terms and conditions for copying, distributing or modifying the Program or works based on it.
- 6) Each time you redistribute the Program (or any work based on the Program), the recipient automatically receives a license from the original licensor to copy, distribute or modify the Program subject to these terms and conditions. You may not impose any further restrictions on the recipients' exercise of the rights granted herein. You are not responsible for enforcing compliance by third parties to this License.
- 7) If, as a consequence of a court judgment or allegation of patent infringement or for any other reason (not limited to patent issues), conditions are imposed on you (whether by court order, agreement or otherwise) that contradict the conditions of this License, they do not excuse you from the conditions of this License.

If you cannot distribute so as to satisfy simultaneously your obligations under this License and any other pertinent obligations, then as a consequence you may not distribute the Program at all. For example, if a patent license would not permit royalty-free redistribution of the Program by all those who receive copies directly or indirectly through you, then the only way you could satisfy both it and this License would be to refrain entirely from distribution of the Program.

If any portion of this section is held invalid or unenforceable under any particular circumstance, the balance of the section is intended to apply and the section as a whole is intended to apply in other circumstances.

It is not the purpose of this section to induce you to infringe any patents or other property right claims or to contest validity of any such claims; this section has the sole purpose of protecting the integrity of the free software distribution system, which is implemented by public license practices. Many people have made generous contributions to the wide range of software distributed through that system in reliance on consistent application of that system; it is up to the author/donor to decide if he or she is willing to distribute software through any other system and a licensee cannot impose that choice.

This section is intended to make thoroughly clear what is believed to be a consequence of the rest of this License.

- 8) If the distribution and/or use of the Program is restricted in certain countries either by patents or by copyrighted interfaces, the original copyright holder who places the Program under this License may add an explicit geographical distribution limitation excluding those countries, so that distribution is permitted only in or among countries not thus excluded. In such case, this License incorporates the limitation as if written in the body of this License.
- 9) The Free Software Foundation may publish revised and/or new versions of the General Public License from time to time. Such new versions will be similar in spirit to the present version, but may differ in detail to address new problems or concerns. Each version is given a distinguishing version number. If the Program specifies a version number of this License which applies to it and "any later version", you have the option of following the terms and conditions either of that version or of any later version published by the Free Software Foundation.
If the Program does not specify a version number of this License, you may choose any version ever published by the Free Software Foundation.

- 10) If you wish to incorporate parts of the Program into other free programs whose distribution conditions are different, write to the author to ask for permission. For software which is copyrighted by the Free Software Foundation, write to the Free Software Foundation; we sometimes make exceptions for this. Our decision will be guided by the two goals of preserving the free status of all derivatives of our free software and of promoting the sharing and reuse of software generally.

NO WARRANTY

- 11) BECAUSE THE PROGRAM IS LICENSED FREE OF CHARGE, THERE IS NO WARRANTY FOR THE PROGRAM, TO THE EXTENT PERMITTED BY APPLICABLE LAW. EXCEPT WHEN OTHERWISE STATED IN WRITING THE COPYRIGHT HOLDERS AND/OR OTHER PARTIES PROVIDE THE PROGRAM "AS IS" WITHOUT WARRANTY OF ANY KIND, EITHER EXPRESSED OR IMPLIED, INCLUDING, BUT NOT LIMITED TO, THE IMPLIED WARRANTIES OF MERCHANTABILITY AND FITNESS FOR A PARTICULAR PURPOSE. THE ENTIRE RISK AS TO THE QUALITY AND PERFORMANCE OF THE PROGRAM IS WITH YOU. SHOULD THE PROGRAM PROVE DEFECTIVE, YOU ASSUME THE COST OF ALL NECESSARY SERVICING, REPAIR OR CORRECTION.
- 12) IN NO EVENT UNLESS REQUIRED BY APPLICABLE LAW OR AGREED TO IN WRITING WILL ANY COPYRIGHT HOLDER, OR ANY OTHER PARTY WHO MAY MODIFY AND/OR REDISTRIBUTE THE PROGRAM AS PERMITTED ABOVE, BE LIABLE TO YOU FOR DAMAGES, INCLUDING ANY GENERAL, SPECIAL, INCIDENTAL OR CONSEQUENTIAL DAMAGES ARISING OUT OF THE USE OR INABILITY TO USE THE PROGRAM (INCLUDING BUT NOT LIMITED TO LOSS OF DATA OR DATA BEING RENDERED INACCURATE OR LOSSES SUSTAINED BY YOU OR THIRD PARTIES OR A FAILURE OF THE PROGRAM TO OPERATE WITH ANY OTHER PROGRAMS), EVEN IF SUCH HOLDER OR OTHER PARTY HAS BEEN ADVISED OF THE POSSIBILITY OF SUCH DAMAGES.

END OF TERMS AND CONDITIONS

How to Apply These Terms to Your New Programs

If you develop a new program, and you want it to be of the greatest possible use to the public, the best way to achieve this is to make it free software which everyone can redistribute and change under these terms.

To do so, attach the following notices to the program. It is safest to attach them to the start of each source file to most effectively convey the exclusion of warranty; and each file should have at least the "copyright" line and a pointer to where the full notice is found.

```
<one line to give the program's name and a brief idea of what it does.>
Copyright (C) <year> <name of author>
```

This program is free software; you can redistribute it and/or modify it under the terms of the GNU General Public License as published by the Free Software Foundation; either version 2 of the License, or(at your option) any later version.

This program is distributed in the hope that it will be useful, but WITHOUT ANY WARRANTY; without even the implied warranty of MERCHANTABILITY or FITNESS FOR A PARTICULAR PURPOSE.
See the GNU General Public License for more details.

You should have received a copy of the GNU General Public License along with this program; if not, write to the Free Software Foundation, Inc., 51 Franklin St, Fifth Floor, Boston, MA 02110-1301 USA.

Also add information on how to contact you by electronic and paper mail.

If the program is interactive, make it output a short notice like this when it starts in an interactive mode:

```
Gnomovision version 69, Copyright (C) year name of author Gnomovision
comes with ABSOLUTELY NO WARRANTY; for details type 'show w'.
This is free software, and you are welcome to redistribute it under certain
conditions; type 'show c' for details.
```

The hypothetical commands 'show w' and 'show c' should show the appropriate parts of the General Public License. Of course, the commands you use may be called something other than 'show w' and 'show c'; they could even be mouse-clicks or menu items--whatever suits your program. You should also get your employer (if you work as a programmer) or your school, if any, to sign a "copyright disclaimer" for the program, if necessary. Here is a sample; alter the names:

```
Yoyodyne, Inc., hereby disclaims all copyright interest in the program
'Gnomovision' (which makes passes at compilers) written by James Hacker.
```

```
<signature of Ty Coon>, 1 April 1989
Ty Coon, President of Vice
```

This General Public License does not permit incorporating your program into proprietary programs. If your program is a subroutine library, you may consider it more useful to permit linking proprietary applications with the library. If this is what you want to do, use the GNU Lesser General Public License instead of this License.

File-backed USB Storage Gadget, for USB development

Copyright (C) 2003-2007 Alan Stern
All rights reserved.

Redistribution and use in source and binary forms, with or without modification, are permitted provided that the following conditions are met:

1. Redistributions of source code must retain the above copyright notice, this list of conditions, and the following disclaimer, without modification.
2. Redistributions in binary form must reproduce the above copyright notice, this list of conditions and the following disclaimer in the documentation and/or other materials provided with the distribution.
3. The names of the above-listed copyright holders may not be used to endorse or promote products derived from this software without specific prior written permission.

ALTERNATIVELY, this software may be distributed under the terms of the GNU General Public License ("GPL") as published by the Free Software Foundation, either version 2 of that License or (at your option) any later version.

THIS SOFTWARE IS PROVIDED BY THE COPYRIGHT HOLDERS AND CONTRIBUTORS "AS IS" AND ANY EXPRESS OR IMPLIED WARRANTIES, INCLUDING, BUT NOT LIMITED TO, THE IMPLIED WARRANTIES OF MERCHANTABILITY AND FITNESS FOR A PARTICULAR PURPOSE ARE DISCLAIMED. IN NO EVENT SHALL THE COPYRIGHT OWNER OR CONTRIBUTORS BE LIABLE FOR ANY DIRECT, INDIRECT, INCIDENTAL, SPECIAL, EXEMPLARY, OR CONSEQUENTIAL DAMAGES (INCLUDING, BUT NOT LIMITED TO, PROCUREMENT OF SUBSTITUTE GOODS OR SERVICES; LOSS OF USE, DATA, OR PROFITS; OR BUSINESS INTERRUPTION) HOWEVER CAUSED AND ON ANY THEORY OF LIABILITY, WHETHER IN CONTRACT, STRICT LIABILITY, OR TORT (INCLUDING NEGLIGENCE OR OTHERWISE) ARISING IN ANY WAY OUT OF THE USE OF THIS SOFTWARE, EVEN IF ADVISED OF THE POSSIBILITY OF SUCH DAMAGE.

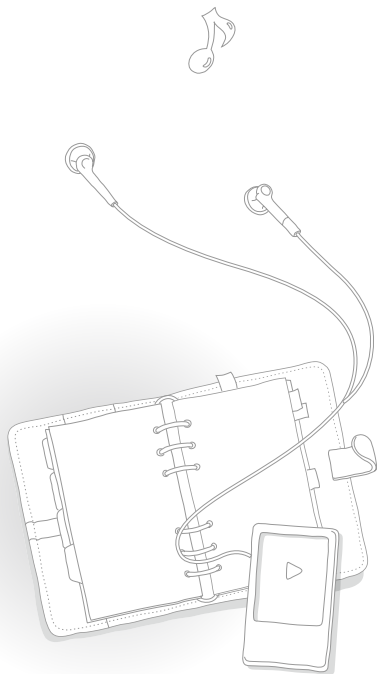
Video for Linux Two header file

Copyright (C) 1999-2007 the contributors

Redistribution and use in source and binary forms, with or without modification, are permitted provided that the following conditions are met:

1. Redistributions of source code must retain the above copyright notice, this list of conditions and the following disclaimer.
2. Redistributions in binary form must reproduce the above copyright notice, this list of conditions and the following disclaimer in the documentation and/or other materials provided with the distribution.
3. The names of its contributors may not be used to endorse or promote products derived from this software without specific prior written permission.

THIS SOFTWARE IS PROVIDED BY THE NETBSD FOUNDATION, INC. AND CONTRIBUTORS "AS IS" AND ANY EXPRESS OR IMPLIED WARRANTIES, INCLUDING, BUT NOT LIMITED TO, THE IMPLIED WARRANTIES OF MERCHANTABILITY AND FITNESS FOR A PARTICULAR PURPOSE ARE DISCLAIMED. IN NO EVENT SHALL THE FOUNDATION OR CONTRIBUTORS BE LIABLE FOR ANY DIRECT, INDIRECT, INCIDENTAL, SPECIAL, EXEMPLARY, OR CONSEQUENTIAL DAMAGES (INCLUDING, BUT NOT LIMITED TO, PROCUREMENT OF SUBSTITUTE GOODS OR SERVICES; LOSS OF USE, DATA, OR PROFITS; OR BUSINESS INTERRUPTION) HOWEVER CAUSED AND ON ANY THEORY OF LIABILITY, WHETHER IN CONTRACT, STRICT LIABILITY, OR TORT (INCLUDING NEGLIGENCE OR OTHERWISE) ARISING IN ANY WAY OUT OF THE USE OF THIS SOFTWARE, EVEN IF ADVISED OF THE POSSIBILITY OF SUCH DAMAGE.





Free Manuals Download Website

<http://myh66.com>

<http://usermanuals.us>

<http://www.somanuals.com>

<http://www.4manuals.cc>

<http://www.manual-lib.com>

<http://www.404manual.com>

<http://www.luxmanual.com>

<http://aubethermostatmanual.com>

Golf course search by state

<http://golfingnear.com>

Email search by domain

<http://emailbydomain.com>

Auto manuals search

<http://auto.somanuals.com>

TV manuals search

<http://tv.somanuals.com>