

SAMSUNG



YP-T7F

Download from [Www.Somanuals.com](http://www.Somanuals.com). All Manuals Search And Download.

MP3, WMA, Audio ASF and Ogg Playback

- Your player supports playback of MP3, WMA, Audio ASF and Ogg.

Removable Storage Device

- You can easily copy and paste files to the player using Windows Explorer.

Video Playback Function

- You can view video files after downloading using the Multimedia Studio.

Text and Image Viewer

- The player can be used as a text and image viewer to view saved e-books or pictures.

Color TFT LCD

- You can enjoy high quality image & video files.

Direct MP3 Recording

- You can convert music from CDs, cassettes, and radio into MP3 files without a PC.

Voice Recording Function

- You can make high quality voice recordings.

FM Reception

- Listening to an FM program is made easy with Auto Search and Frequency Memory functions.

DNSe Surround Sound

- The 3D surround feature adds spaciousness to the sound.

USB 2.0 High Speed Data Transfer

- Maximum data speed transfer of 120 Mbps.

Built-in Rechargeable Li-polymer Battery

- The built-in rechargeable lithium battery provides up to 10 hours of play time.
(According to company measurement)

Upgradable Firmware

- You can upgrade the built-in programs when available.
Please check the home page (www.samsung.com) for upgrades.

Contents

Chapter 1 Preparations

Features	2
Safety Instructions	6
Components	8
Location of Controls	9
Charging the Battery	11

Chapter 2 Connection to Computer

Connecting the player to your PC	12
● Installing the USB Driver	12
● Connecting the player to your PC with the USB cable	14
Manual Installation of the USB Driver	16
● If an error occurs during installation of the USB driver	16
Using the Player as a Removable Disk	18
● Downloading Files	18
● Disconnecting USB Cable	20
Installing Media Studio	21
Using Media Studio	23
● Downloading Music Files	23
● Creating a Folder on your Player	25
● Deleting Files	26
● Formatting in Media Studio	27
● Ripping Tracks from an Audio CD	28
To View Help on Media Studio	29
Installing Multimedia Studio	30
Using Multimedia Studio	32
● Editing Images	32
● Sending images	33
● Sending Videos	35
● Capturing Video	37
To View Help on Multimedia Studio	39

Chapter 3 Using Your Player

Playing Music	40
● Turning Power On and Off	40
● Playing Music	40
● Pausing Music	40
● Adjusting the Volume	40
● Hold Function	40
Searching for Music/Voice Files	41
● To search for specific parts during play	41
● To change tracks during play	41
● To change tracks when stopped/paused	41
Loop Repeating	42
● Starting Point	42
● Ending Point	42
Recording Voice	43
Recording MP3s	44
MENU Options	45
Using Navigation	46
● Setting Playlist	46
● Playing Playlist	47
Setting FM Radio	47
● Listening to FM Radio	48
● Manual Storage of a Frequency	48
● Searching Stored Frequencies	48
● Automatic Storage of a Frequency	49
● Timer FM REC	49
● Delete Preset	50
● FM Region	50
● FM Search Level	51
Recording FM	51
Viewing an Image	52
Viewing a Text	53
● Setting a Bookmark	53
● Moving to Bookmark	53

Chapter 3 Using Your Player

Viewing a Video	54
Setting the Advanced Functions	55
Selecting the Play mode	56
Setting Sound Effect	57
● DNSe	57
● 3D User Set	57
● Street Mode	58
● User EQ Set	58
Display Settings	59
● Scroll	59
● Visualizer	59
● Backlight Time	60
● Tag Info	60
● Clock Screen Saver	61
● Language	61
Record Settings	62
● Bit Rate	62
● Auto Sync	62
● VOR (Voice Operation Recording)	63
Time Settings	63
● Sleep	63
● Alarm Set	64
● Time Set	64
Play Speed Settings	65
System Settings	65
● Delete File	65
● Beep	66
● Skip Interval	66
● Search Speed	66
● Resume	67
● Auto Off Time	67
● Intro Time	67
● Default Set	68

● Format	68
● About	68

Chapter 4 Appendix

MENU Table	69
------------------	----

Chapter 5 Customer Support

Troubleshooting	70
Specifications	72

Safety Instructions

Read and understand all the instructions to avoid injury to yourself and damage to the equipment.



Do not expose to extreme temperatures (above 35°C or below -5°C). Do not expose to moisture.



Do not subject the player to severe impact.



Do not let any foreign matter spill into the device.



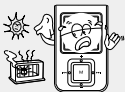
Do not place heavy objects on the player.



Do not expose to chemicals such as benzene and thinners.



Do not store in dusty areas.



Do not expose to direct sunlight or heat sources.



Be careful not to subject the player to excessive pressure when wearing it round your neck.



Do not try to disassemble and repair the device yourself.



Do not drop the player into the water. If you have dropped the player into the water or the player is wet, do not turn the player on and contact our service center.

* Please be aware that we claim no responsibility for damage from data loss due to breakdown, repair or other causes.

Earphones

Follow Traffic Safety Instructions

- Do not use the earphones while driving an automobile or riding a bicycle. It's not only dangerous, but also against the law.
- It may cause an accident if you turn up the volume of the earphones while walking, especially when crossing intersections.

Protect your ears

- Do not turn up the volume too high. Doctors warn against prolonged exposure to high volume.
- Stop using the device or turn the volume down if you have ringing in your ears.
- Take care so that the earphone cable is not caught by your arm or other objects while walking or exercise.

Ambient operating conditions

- Ambient temperature : 5°C ~ 35°C (41°F ~ 95°F)
Humidity : 10 ~ 75%

Environmental Information

- Follow local guidelines for waste disposal when discarding packages, batteries, and old electronic appliances.
- Your player is packaged with cardboard, polyethylene etc., and does not use any unnecessary materials.

Components



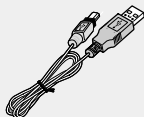
Player



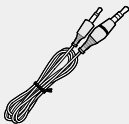
Neck Strap



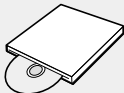
Earphones



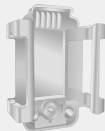
USB Cable



Line-In Cable



Installation CD

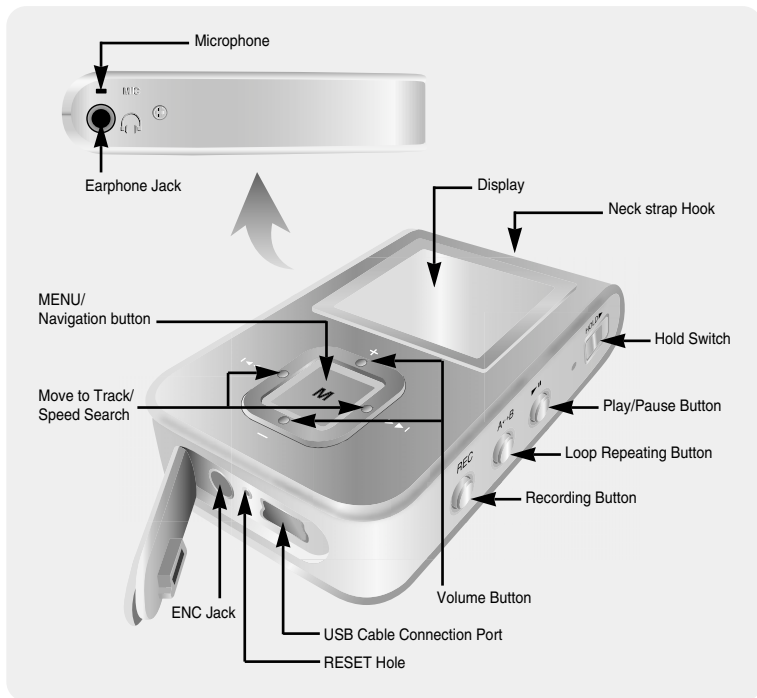


Belt Clip

Model	YP-T7F V	YP-T7F X	YP-T7F Z	YP-T7F Q
Built-in memory	256MB	512MB	1GB	2GB

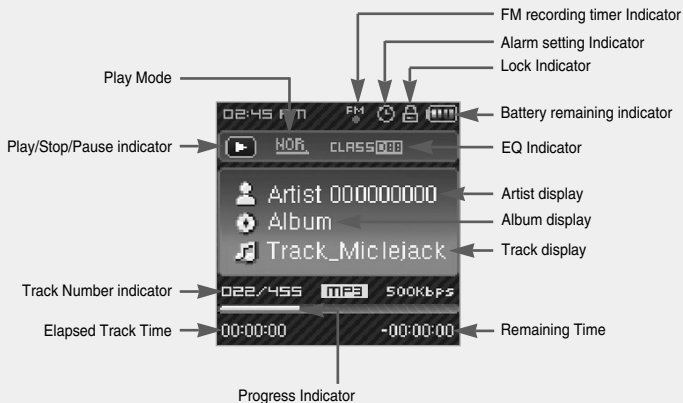
- The capacity of the useable built-in memory is less than indicated as the internal firmware uses part of the memory as well.
- The accessories' design is subject to change for the purpose of improvement, without notice.

Location of Controls



Location of Controls

Display

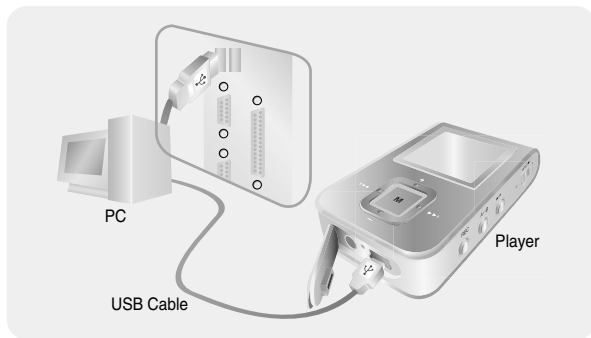


Note

- The screen pictures are for illustration purposes only. The actual screen may differ.

Charging the battery

- 1 Connect the USB cable to the USB port of the computer.
- 2 Connect the other end of the USB cable to the USB cable connection port located at the bottom of the player.
 - ▲ When recharging is complete, “Fully Charged” is shown in the display window.
 - ▲ Battery recharge time in normal operation is approximately 3 hours.



Note

- Fully charge the rechargeable battery if using for the first time or after several months of non-use.
- To avoid the risk of fire, do not charge longer than 12 hours.
- Overcharging will reduce the battery life.
- The rechargeable battery is a consumable item and its capacity will decrease gradually.
- If you connect the player through a USB hub, the connection may be unstable. Please connect the player to the computer directly.

Connecting the player to your PC

For Windows 98SE, install the USB driver prior to connecting the player to PC.

❑ System Requirements.

The PC system must meet the following specifications:

- Pentium 200MHz or greater
- Windows 98 SE/ME/2000/XP
- 100MB of available hard disk space
- CD-ROM drive(double speed or greater)
- USB port (2.0) supported
- DirectX 9.0 or above

I Installing the USB Driver

For Windows 98SE, install the USB driver before connecting the player and the PC.
For Windows ME, 2000 or XP, USB driver installation is not required. See
“Connecting the player to your PC (Page 14)”.

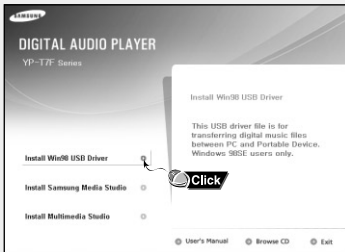
I Select your country.



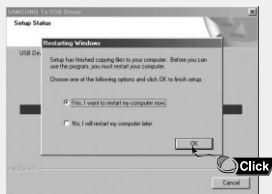
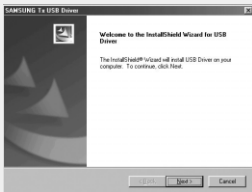
Connecting the player to your PC

2 Insert the Installation CD into CD-ROM drive.

Select **[Install Win98 USB Driver]**.



3 Follow the instructions in the window to complete the installation.

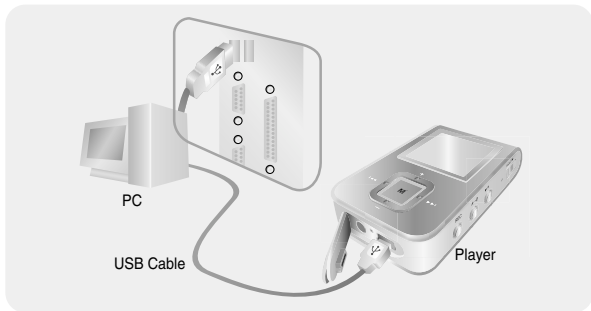


- When software installation is completed, connect the player to PC as shown in the next page.

Connecting the player to your PC

Connecting the player to your PC with the USB cable

- 1 Connect the USB cable to the USB port on your computer.
- 2 Connect the other end of the USB cable to the USB cable connection port on the bottom of the player.
 - If you disconnect the USB cable from your PC while implementing a command or initializing during USB driver installation, your PC may not function correctly.
- 3 The USB driver is installed with a message saying that it is searching for a new device. You may not see the display screen during installation. Go to the device manager to check that installation has been successfully completed.
- 4 Upon installation of the USB driver "Samsung YP-T7F USB Device" will appear in the [Device Manager].



Connecting the player to your PC

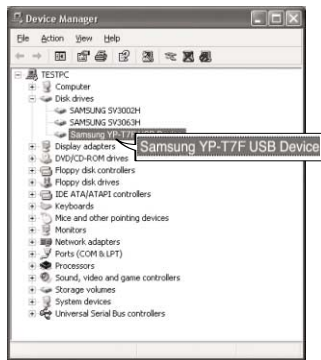
How to check if USB driver is properly installed

Windows 98SE/ME:

Control Panel → **System** → **Device Manager** →
Disk Drives → **Samsung YP-T7F**

Windows 2000/XP:

Start → **Settings** → **Control Panel** → **System** →
Hardware → **Device Manager** → **Disk Drives** →
SAMSUNG YP-T7F USB Device



Manual Installation of the USB Driver

If the driver does not install automatically, follow the instructions below to install the USB driver manually.

If an error occurs during installation of the USB driver

1 Check the device manager.

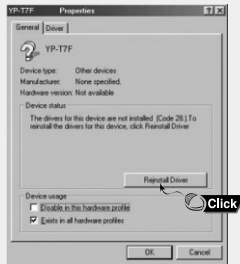
Windows 98SE:

Control Panel → **System** → **Device Manager**

2 Check to see if there is a device marked with an exclamation or question mark (displayed as unknown device or USB device).

3 Double-click a device marked with an exclamation or question mark.

4 Select the Driver tab and click [Update Driver].



Notice

- The installation method may vary depending on the type of PC or operating system. Contact your PC dealer or service center for installation information.
- If errors occur continuously when you install the USB driver, reconnect the USB cable after rebooting your system.

Manual Installation of the USB Driver

Follow the instructions below to install the USB driver manually.



Click



Click

USB driver location
[CD-ROM]Win98USB\Drivers



Click



Click



Click

Using the Player as a Removable Disk

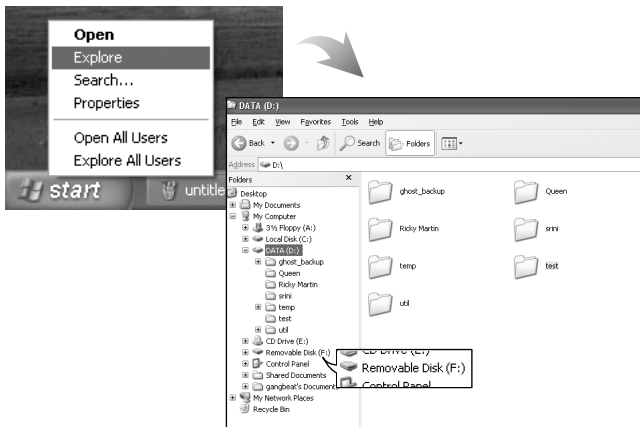
When the MP3 player is connected to your PC, the PC will see it as a removable disc. Music and other files can then be dragged and dropped into the removable disc for playback on the MP3 player.

1 Downloading Files

1 Connect the player to your PC with the supplied USB cable.

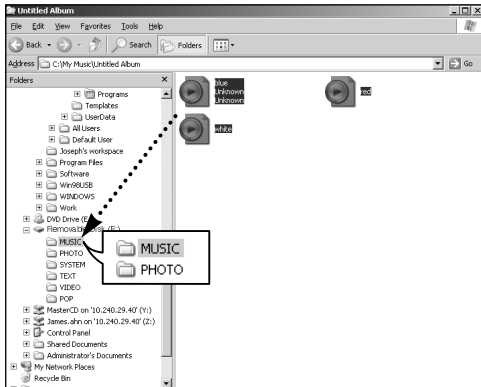
2 Right click on the Start button, then choose Explore to Open Windows Explorer on PC.

- [Removable Disk] is displayed in Windows Explorer.



Using the Player as a Removable Disk

- 3 Select the file to save and drag-and-drop it into the desired folder.
- Drag & drop music files into MUSIC folder, text files into TEXT folder, image files into PHOTO folder and svi files into VIDEO folder.
 - The player only supports video files which have a .svi extension.
To view video files on other formats, convert the files using Multimedia Studio and then transfer the converted files into the player.



Caution

- Disconnecting the USB cable during file download may cause malfunction of the player.
- The music file order displayed in Windows Explorer may differ from the play order on your player.

Using the Player as a Removable Disk

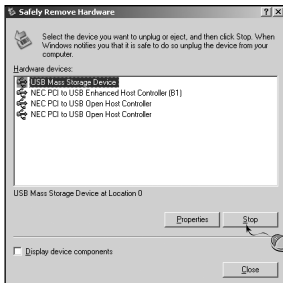
Disconnecting USB Cable

After completing file transfer, you must disconnect the cable using the following way:

1 Double click the green arrow in the taskbar located at the bottom right side of the screen.



2 Select the USB device and click the [Stop] button. When the [Stop a Hardware Device] screen appears, click the [OK] button and then disconnect the USB cable.



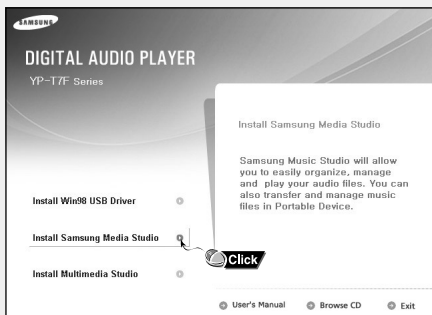
Caution

- If you disconnect the USB cable improperly, the files on the device may be damaged and will not play.

Installing Media Studio

Media Studio is the program that enables you to download music files to the player, and play back music files on your PC.

- 1 Insert the Installation CD into CD-ROM drive.
Select **[Install Samsung Media Studio]**.



Note

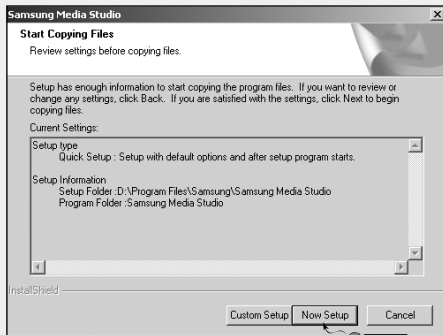
- Log into your PC as an administrator (Main User) and install the supplied software (Media / Multimedia Studio). Otherwise, the software may not install properly.

- 2 Select language.



Installing Media Studio

- 3 Follow the instruction in the window to complete the installation.
- Samsung Media Studio icon will be created on the desktop.



- Double-click the Media Studio icon on the Desktop.

I Downloading Music Files

1 Connect the player to your PC


- A device connection window will appear on the right side of the screen.
 - Select [Device] → [Show device Window] at the top of the screen if device connection window does not automatically appear.

2 Select the folder with the file(s) you want to transfer from the [Library] window.

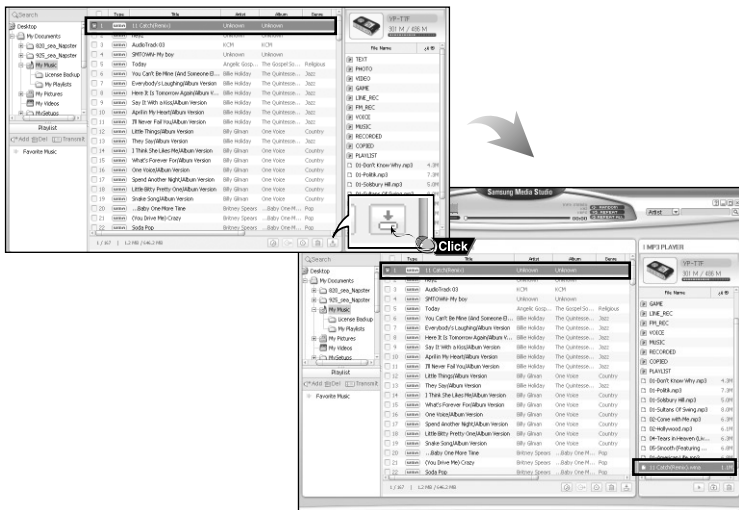
- The music files within the folder appear in the center of the screen.



Using Media Studio

3 When music files appear, select the file(s) you want to transfer, and then press the [Transfer]  button.


- The selected file(s) are transferred to the player.

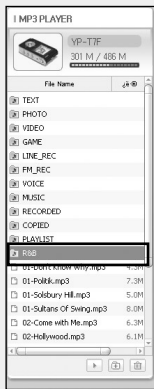


Note

- Refer to [Help] for more detailed information.

I Creating a Folder on your Player

- 1 Connect the player to your PC.
- 2 Press the **[Create Folder]**  button at the bottom of device connection window.
- 3 Enter the name of the new folder when an input screen appears.
 - A new folder is created on the player.
 - If you open a new folder and transfer a file, the file is transferred to the newly created folder.




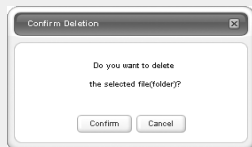
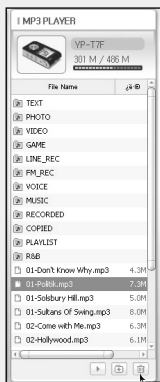
Note

- Refer to **[Help]** for more detailed information.

Using Media Studio

Deleting Files

- 1 Connect the player to your PC.
- 2 Press the **[Delete]**  button at the bottom of the connection windows after selecting required files or folders from the device connection windows.
- 3 Press the **[Confirm]** button when an Confirm Deletion screen appears.
 - A selected folder or file is deleted.



Note

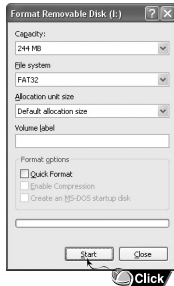
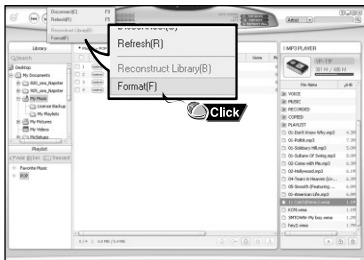
- Refer to **[Help]** for more detailed information.



- Formatting deletes all files on the MP3 player so maximum memory is available for new file storage. It saves you the trouble of deleting unwanted files one at a time.

Formatting the Player in Media Studio

- 1 Connect the player to your PC.
- 2 Press the [Device] → [Format] at the top of the screen.
- 3 Press the [Start] button when the Format screen appears.
 - The memory of the player is formatted and all the saved files will be deleted.



Note

- Refer to [Help] for more detailed information

Using Media Studio

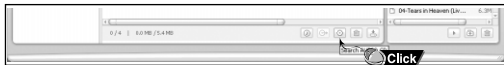
- Using the audio format conversion function, you can rip tracks from an audio CD as MP3 files.


Ripping Tracks from an Audio CD

1 Insert the Audio CD into the CD-ROM drive of your PC.

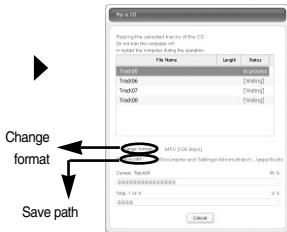
2 Press the [Search Audio CD]  button on the lower part of the screen.

- The tracks on the CD are displayed.



3 Select tracks to be ripped and press the [Rip a CD]  button.

- The selected file is converted into an MP3 file.
- Select [Tools]→[Audio Source Format Conversion Settings] on the top of the screen to change rip settings.



Note - Refer to [Help] for more detailed information.

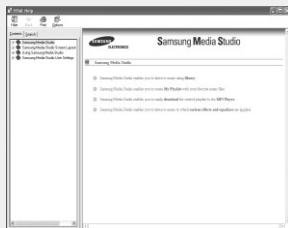
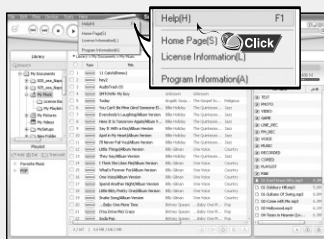
To View Help on Media Studio

Press F1 on your PC's keyboard after starting Media Studio.

- Help window will appear.

Click on [Help] at the top of Media Studio.

- Help window will appear.



Note

- Music recognition technology and related data are provided by Gracenote and Gracenote CDDB® Music Recognition ServiceSM.
- CDDB is a registered trademark of Gracenote. The Gracenote logo and logotype, the Gracenote CDDB logo and logotype, and the "Powered by Gracenote CDDB" logo are trademarks of Gracenote. Music Recognition Service and MRS are service marks of Gracenote.

Installing Multimedia Studio

Multimedia Studio is a program that supports image editing, video playback and format conversion, and multimedia album creation.

- 1** Insert the Installation CD into CD-ROM drive.
The picture shown below appears. Select [**Install Multimedia Studio**].



- 2** Select language.

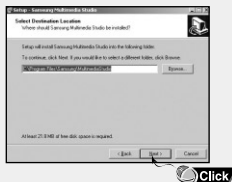
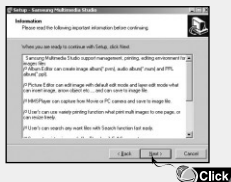


Note

- Log into your PC as an administrator (Main User) and install the supplied software (Media / Multimedia Studio). Otherwise, the software may not install properly.



3 Follow the instructions in the window to complete the installation.



Using Multimedia Studio

- Run Multimedia Studio from the Desktop.

Editing Images

1 Select the folder containing images to edit from the directory window at the upper left-hand section of Multimedia Studio.

- The saved files will be displayed in the file list window on the right.

2 Select the image to edit.

- The selected image will be displayed in the [Preview image] window.

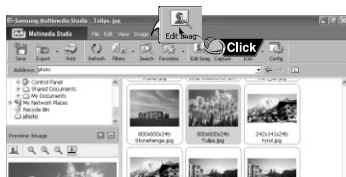
3 Press the **[Edit Img]** button.

- From the [Picture editor] window, you can perform functions like editing wallpaper images, editing layers, inserting clip art, making frames and other various editing functions.



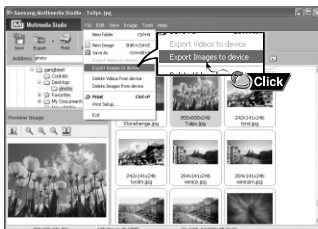
Note

- Refer to **[Help]** for more detailed information



I Sending images

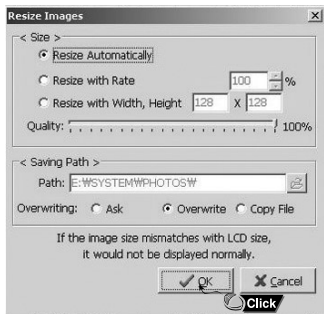
- 1 Connect the player to PC.
- 2 Select the image(s) to send to the player.
- 3 Select **[File]** → **[Export images to device]** at the top of the Multimedia Studio menu.
- 4 Select the device connected to PC from the **[Select device]** screen, and then press the **[OK]** button.



Using Multimedia Studio

5 Set the size and path of the image at the **[Resize images]** window and then click the **[OK]** button.

- The image will be sent to the selected device.
- The transferred picture can be viewed at **[Photo]**.
- The optimal image size for viewing on the unit is 128 x 128. Please adjust the image size if the image does not display correctly on the player.

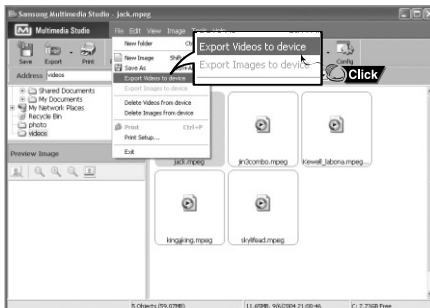


Note


- Path refers to the location or folder where the converted image(s) will be saved to on your PC.
- Image files saved in the player can be deleted by selecting **[File]** → **[Delete images from device]**.
- Refer to **[Help]** for more detailed information

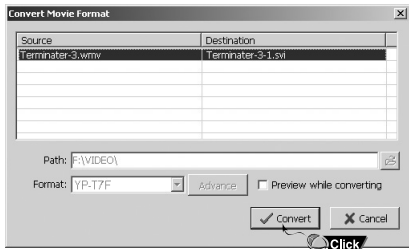
Sending Videos

- 1 Connect the player to PC.
- 2 Select the video(s) to send to the player.
- 3 Select [File] → [Export videos to device] at the top of Multimedia Studio.
- 4 Select the device connected to PC from the [Select device] screen, and then press the [OK] button.



Using Multimedia Studio

- 5 Select the folder to save from the folder selection screen, and then press the [OK] button.
- 6 Press the [Convert]  button when conversion screen appears.
- The converted file is transferred in svi format.
 - The transferred video file can be viewed from [Video].



- ▲ For converting and transferring a video file, you have to check the following:
1. Check if Direct X 9.0 or higher has been installed in the PC.
 2. Check if Windows Media Player 9.0 or higher has been installed in the PC.
 3. Check if Unified Codec Pack has been installed in the PC.

Note

- Video files saved onto the device can be deleted by selecting [File] → [Delete videos from device].
- Refer to [Help] for more detailed information

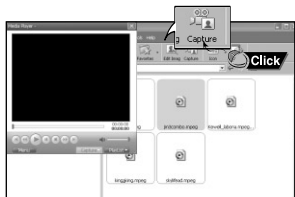
Using Multimedia Studio

- The Multimedia Studio software allows you to capture a still frame from a video file and save it as a picture, then transfer it to the YP-T7F.

Capturing Video

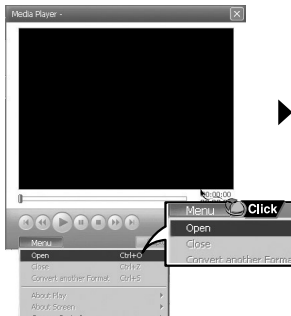
1 Press the **[Capture]** button at the top of the Multimedia Studio menu.

- The Media Player screen will be displayed.



2 Click **[Menu]** → **[Open]** on your PC and select the video to play.

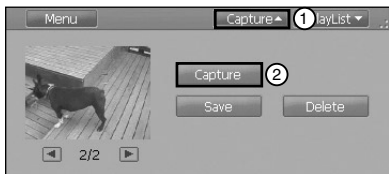
- The selected video will be played.



Using Multimedia Studio

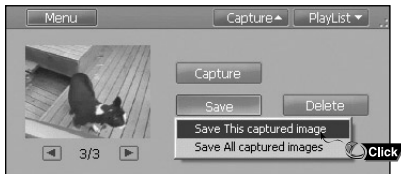
3 Press the ① **[Capture]** button and then press the ② **[Capture]** button when the image you want to capture appears.

- The selected image will be captured.



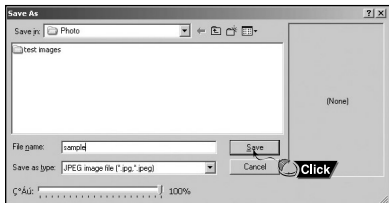
4 Press the **[Save]** button.

- Save This captured image: saves the currently selected image.
- Save All captured images: saves all captured images.



5 Select the directory to save to from the **[Save As]** window and press the **[Save]** button.

- The selected image will be saved.



Note

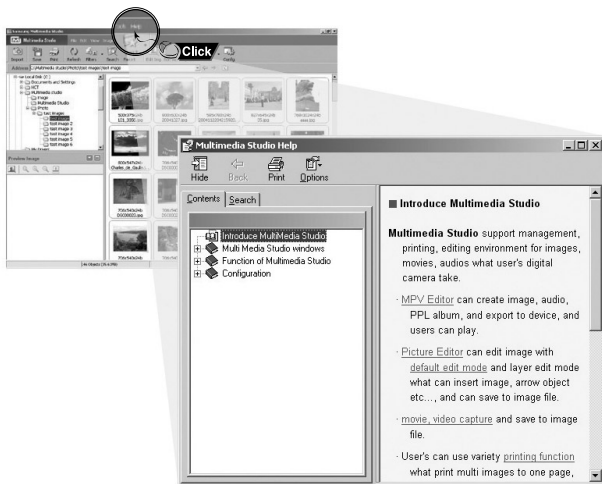
- Video playback and conversion codecs are not provided. It is recommended that you use codecs of latest versions.
- Refer to **[Help]** for more detailed information.

Download from [Www.Somanuals.com](http://www.Somanuals.com). All Manuals Search And Download.

To View Help on Multimedia Studio

Run Multimedia Studio and press the Help button at the top of the screen.

- Help will be displayed.



Playing Music

Make sure the player is fully charged and the earphones are connected.

Turning Power On and Off

Power On : Press and hold the ►|| button to turn on the power.

Power Off : Press and hold the ►|| button to turn off the power.

Playing Music

Press the ►|| button.

- Playback starts.

Pausing Music

Press the ►|| button to pause playback.


- If no buttons are pressed within 1 minute, the player automatically powers off.
- While in Pause mode, press the ►|| button again to resume playback.

Adjusting the Volume

Press **—**, **+** to adjust the volume from 00 to 40.

Hold Function

In Hold mode, all buttons are disabled. This function is useful when you are walking or jogging.

Slide the  switch in the direction of the arrow.

- When the button is pressed, the “HOLD” message will appear on the display.

Note

- If the file name is not displayed correctly, move to **[Settings]** → **[Display]** → **[Language]** and then change the language setting.
- WMA files can only be played as music files with a compression rate of 48Kbps-192Kbps.
- The power off time can be set in the menu.

To search for specific parts during play

- Press and hold the **⏮, ⏭** button during playback to search for the part you want to listen to.
- Release the button to resume play normally.

To change tracks during play

- Press the **⏭** button briefly during playback to play the next track.
- Press the **⏮** button briefly within 5 seconds after playback starts to move to and play the previous track. Press the **⏮** button briefly after 5 seconds to play the current track from the beginning.

To change tracks when stopped/paused

- Press the **⏮, ⏭** button in stop/pause mode to move to the previous/next track.

Note

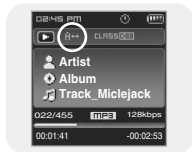
- VBR(Variable Bit Rate) file: A file that constantly changes the compression rate according to the type of sounds, such as their pitch, in the file.
- When playing a VBR file, you cannot move to and play the previous track even if you press the **⏮** within 5 seconds after playback starts.
- Files that were downloaded in MP2 or MP1 and had their file extension changed to MP3 may not play.

Loop Repeating

Starting Point

While playing music files, press the A↔B button briefly at the beginning of the loop you want to set.

- A↔ appears in the display.



Ending Point

Press the A↔B button briefly again to set the end of the loop.

- A↔B appears in the display.
- The loop is played repeatedly.

Press the A↔B button briefly to cancel the loop.



Note

- Loop Repeat is automatically released if you Speed Search with the ⏮, ⏭ button.

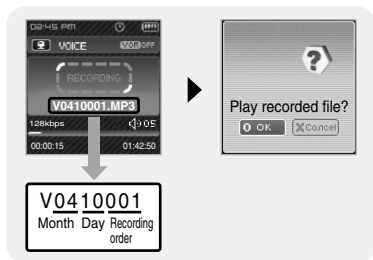
- 1 Press and hold the REC button to start voice recording.
- Press the ►|| button to pause the recording. Press the ►|| button once again to resume the recording.

- 2 Press the REC button again to stop the recording and save the voice file.
- The files are recorded in the order of V***001, V***002..., and saved as MP3 files in the [RECORDED] → [VOICE] after recording.

- 3 When the Confirm screen appears, select [OK] or [Cancel].
- When selecting [OK], the recorded file will be played.

Note

- If the Memory is full, Voice Recording will be disabled automatically.
- Voice recording does not work in FM mode or when the line in cable is connected.
- Beeps are disabled while recording.
- Recording is allowed only when there is 1MB or more of free memory.



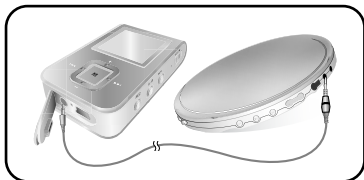
Recording MP3s

1 Connect the Audio OUT port (or Line OUT) on the external audio source to the ENC port on the device with the Line cable.

- Press the play button on the external device to play the music to record.

2 Press and hold the REC button to start MP3 recording.

- If the ►|| button is pressed, recording is paused and if the ►|| button is pressed again, the recording resumes.



3 If the REC button is pressed during recording, the recording stops and an MP3 file is created.

- The files are recorded in the order of L****001, L****002.... and saved as MP3 files in the [RECORDED] → [LINE] folder after recording.

4 When the Confirm screen appears, select [OK] or [Cancel].

- When selecting [OK], the recorded file will be played.

Note




- Bit Rates can be set within the range of 32Kbps-192Kbps.
- Beeps are disabled while recording.
- Recording is allowed only when there is 1MB or more of free memory.

Caution

- Do not disconnect the Line in cable during recording.
- If the battery is not sufficiently charged, the player will not completely record the file.
- Adjust the volume of the external audio source to a suitable level and record it.
If the volume level is too high or low, the sound quality might be poor.

MENU Options

Press and hold the  button to switch to MENU mode.

Use   to move and press the  button briefly to select the menu you want.



- Music : To check the file currently playing.
- Navigation : To move to Navigation Mode and browse files and folders you want to play.
- FM Radio : To listen to FM radio.
- Playlist : To play back only the files you want.
- Photo : To view image files.
- Text : To read text files.
- Video : To view video files.
- Settings : To set the functions.
- Exit : To exit MENU.



Note

- Menu mode will be cancelled if no buttons are pressed within a minute.

Using Navigation

- You can easily search for files or switch modes using the Navigation function.

1 Press the **[M]** button to enter Navigation mode or press and hold the **[M]** button to move to Menu and then select Navigation in Menu.

2 Select the file or folder that you want to play.

- **[Left Arrow]**: To move to a higher-level folder.
- **[Right Arrow]**: To move to a lower-level folder.
- **[Up Arrow]**: To move to a file or folder in the same directory.
- **A↔B**: When selected file, the selected file will be designated as part of the playlist.

3 Press the NAVI button.

- The selected file will be played.



Note

- In the Navigation Mode, press and hold the **[M]** button to return to the menu screen.

Setting Playlist

1 Press and hold the **[M]** button to move to Menu and then select the navigation from the menu.



2 Move to the file you want and press the **A↔B** button.

- The selected file will be marked and added to [Playlist].
- To exit the playlist setting, move to the marked file in Navigation mode and press the **A↔B** button again.





Download from [Www.Somanuals.com](http://www.Somanuals.com). All Manuals Search And Download.

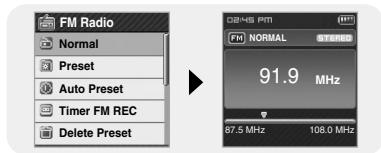
Playing Playlist

- 1 Press and hold the  button to move to Menu and then select the playlist from the menu.
 - The playlist(s) you set will be displayed.
- 2 Move to the playlist you want and press the  button.
 - The selected playlist will be played.



Setting FM Radio

- 1 Press and hold the  button to move to Menu and then select the FM Radio from the menu.
- 2 In the FM Radio menu, use **-**, **+** to move to the function you want, and then press the  button to select.



Setting FM Radio

Listening to FM Radio


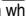
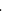
1 Select FM Radio → Normal.

2 Use ◀◀, ▶▶ to move to the frequency you want.

- **Manual Search** : Press ◀◀, ▶▶ to change the frequency up or down.
- **Automatic Search** : Press and hold ◀◀, ▶▶ to automatically search for receiving frequencies.




Note

- Press and hold the  button to return to the menu screen.
- Press the  button while listening to FM radio to mute the sound. Press the  button once again to listen to FM radio.

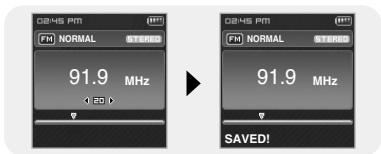
Manual Storage of a Frequency

1 Select FM Radio → Normal.

2 Use ◀◀, ▶▶ to move to the frequency to save, and then press the A↔B button.

3 Use ◀◀, ▶▶ to select the number you want to assign to save the frequency, and then press the  button.

- The selected frequency will be saved.



Searching Stored Frequencies

1 Select FM Radio → Preset.

2 Use ◀◀, ▶▶ to move to the desired frequency.



Note

- Press the  button in normal FM mode to move to the Preset screen.



Automatic Storage of a Frequency

Select FM Radio → Auto Preset.

- Frequencies within the range of 87.5MHz to 108.0MHz are automatically selected and stored.
- Frequencies are automatically stored, starting from 1.

Note

- You can store up to 30 frequencies.



Timer FM REC

1 Select FM Radio → Timer FM REC.

2 Use **-** or **+** button to select and press the **▶▶** button to move to the next stage.

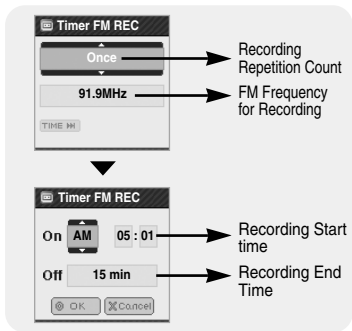
- When set to Off in the first stage, you are not moved to the next stage.

3 After setting Timer FM REC, move to [OK] and press the **M** button.

- The player will automatically turn on and record at the time you specified.

Note


- The player must be Off for a Timer Recording to occur.
- After setting Timer Rec, the timer icon will be displayed.



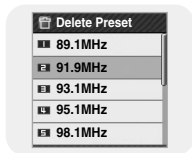
Setting FM Radio

Delete Preset

1 Select FM Radio → Delete Preset.




2 After moving to the PRESET number you want to delete, press the  button.

- The saved Preset number will be deleted.



FM Region

1 Select FM Radio → FM Region.

2 Use ,  to select FM Tuner region, and then press the  button.

- Other Country : Search FM frequencies between 87.50MHz to 108.00MHz in increments of 50 KHz.
- Korea/US : Search FM frequencies between 87.5MHz to 108.0MHz in increments of 100 KHz.
- Japan : Search FM frequencies between 76.0MHz to 108.0MHz in increments of 100 KHz.



Note

- The default FM region setting may vary depending on the target region of the player.

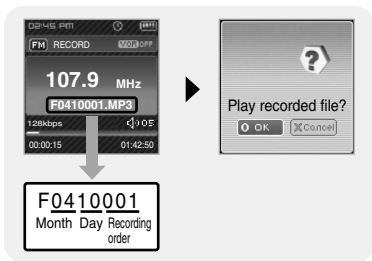
FM Search Level

- 1 Select FM Radio → FM Search Level.
- 2 Use **←**, **→** to select the desired FM Search Level, and then press the **[M]** button.
 - The higher the FM search level, the more frequencies can be received.
 - High → Middle → Low



Recording FM

- 1 Press and hold the REC button while receiving FM.
 - Recording of the current FM frequency begins.
- 2 Press the REC button again.
 - A recording file is created and the recording stops.
 - The files are recorded in the order of F****001, F****002.... and saved as MP3 files in the [RECORDED] → [FM] folder after recording.
- 3 When the Confirm screen appears, select [OK] or [Cancel].
 - When selecting [OK], the recorded file will be played.



Note

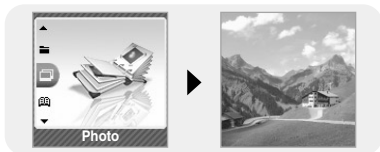
- Beeps are disabled while recording.
 - You can record FM broadcast only at 128kbps.
 - Recording is allowed only when there is 1MB or more of free space.
- Download from www.manuals.com All Manuals Search And Download.


Viewing an Image


You can select an image file to view while listening to the music.

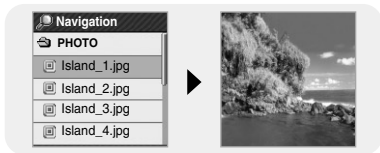
1 Press and hold the  button to move to menu and select Photo.

- The photo screen appears.



2 Press the  button briefly to move to the image selection screen. Move to the image you want and press the  button.

- The selected image file will be displayed.
- Press and hold the  button to return to the MENU screen.



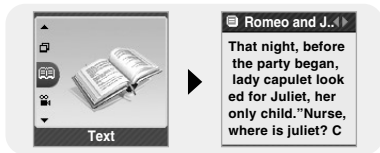
Note


- The optimal image size for the unit is 128X128. Too large images may take longer to display. If the image size is too large, use Multimedia Studio to adjust the size and resend it to the player.

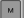
Text Viewer allows you to read text files that were created on your PC. Text files must have a .txt extension to be viewed by Text Viewer.


1 Press and hold the  button to move to menu and select Text.

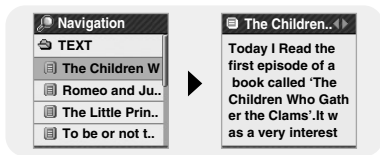
- The text screen appears.



2 Press the  button briefly to move to the text selection screen.

Move to the text you want and press the  button.

- The selected text file will be displayed.
- Press and hold the  button to return to the MENU screen.



Setting a Bookmark

Press and hold the A↔B button in the Text screen.

- The current page is bookmarked.
- You can create only 1 bookmark.

Moving to Bookmark

Press the A↔B button in the Text screen.

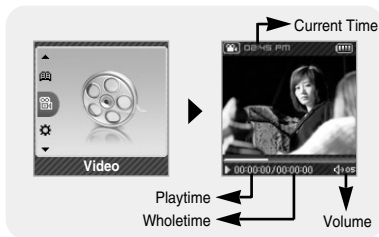
- The bookmarked page is displayed.



Viewing a Video



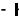

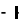


1 Press and hold the  button to move to menu and select Video.

- The video screen appears.



2 Press the  button briefly to move to the video selection screen.

Move to the video you want and press the NAVI button.

- The selected video will be played.
 - , : To adjust the volume.
 - ,  (Pressing briefly): To move to the previous/next video.
 - ,  (Pressing and holding): To browse videos fast.
 - MENU: Check the progress time, total time, and volume.
- Press and hold the  button to move to the MENU screen.



Note

- The player only supports video files which have an .svi extension. To view video files on other formats, convert the files using Multimedia Studio and then transfer the converted files into the player. To send video files to the player, refer to "Sending Videos" of "Using Multimedia Studio".

Setting the Advanced Funtions

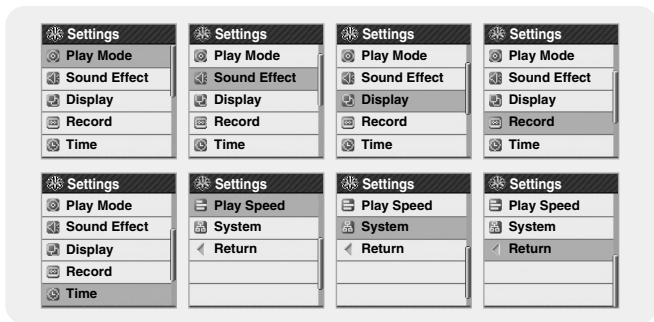
1 Select Settings in the menu. (refer to "MENU Options")




ENG




2 In Settings, use **-**, **+** to move to the function you want and press the **M** button to select.

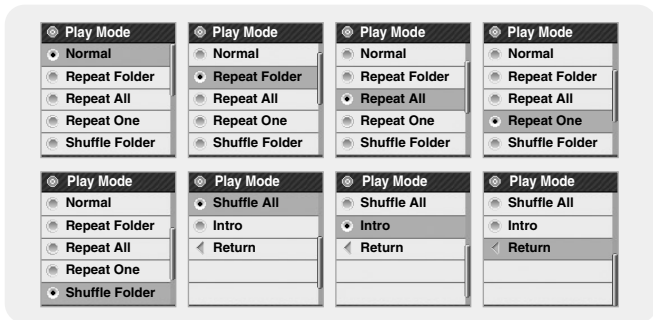
● To move to a previous menu, use **◀** or select Return.



Selecting the Play mode


1 Press and hold the  button. Select Settings → Play Mode.

2 Use  ,  to move to the play mode you want and press the  button.




- Normal : To play all the files in order one time.
- Repeat Folder : To repeat the current folder.
- Repeat All : To repeat all files.
- Repeat One : To repeat one file.
- Shuffle Folder : To play files in the folder at random.
- Shuffle All : To play files at random.
- Intro : To play the first few seconds of a music file.
- Exit : To move to a previous menu.

Setting Sound Effect

Press and hold the  button. Select Settings → Sound Effect.

DNSe

- Use **-**, **+** to move to the sound mode you want and press the  button.
- 3D-User → 3D-Studio → 3D-Stage → 3D-Club → Normal → Rock → House → Dance → Jazz → Ballad → Rhythm & Blues → Classical → User EQ
- Select User EQ to set the EQ as desired.




Note

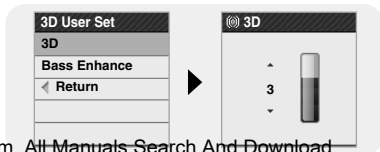
- DNSe is a sound effect function for MP3 player developed by Samsung and consists of 3D, Bass Enhance and Street modes. The 3D adds stereophonic sound effect to the music, the Bass Enhance reinforces the bass and the Street mode provides automatic volume control function that amplifies small sound in noisy environment for easier listening in noisy street.
- For some Ogg files, 3D Sound is not supported.

3D User Set

3D-User Set is applied only when 3D sound mode is selected from DNSe.

3D

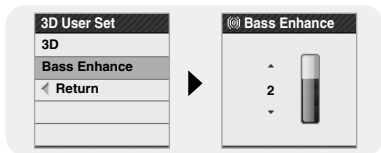
- Use **-**, **+** to move to the 3D level you want and press the  button.
- 3D level can be set within the range of 0 to 5.



Setting Sound Effect

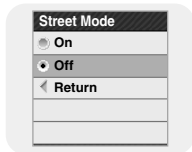
Bass Enhance

- Use **-**, **+** to move to the bass Enhance level you want and press the **M** button.
- Bass Enhance level can be set within the range of 0 to 3.



Street Mode


- Use **-**, **+** to move to Street Mode On or Off and press the **M** button.
- On: You can hear the sound with better quality when you listen to music in the street.
- Off: Tracks are played in the setting sound mode.



User EQ Set

- You can adjust the EQ to your preference in the User EQ Set.
- Press **◀**, **▶** to move left or right to select the desired EQ, and press **-**, **+** to adjust the level. After the setting is completed, move to [OK] and press the **M** button.

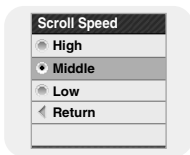


Press and hold the  button. Select Settings → Display.

Scroll

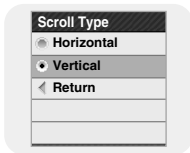
Scroll Speed

- Use **-**, **+** to set the scroll speed to adjust the speed of the track title movement.
- High → Middle → Low.




Scroll Type

- Use **-**, **+** to select one of the scroll types below.
- Horizontal : Music title moves horizontally.
- Vertical : Music title moves vertically.

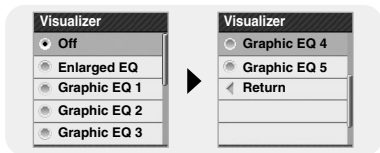


Visualizer

- Use **-**, **+** to move to the Visualizer screen you want and press the  button.
- If you select a visualizer, the background of the music mode is changed to the selected visualizer screen.

Note

- For some Ogg files, visualizer is not supported.



Display Settings

Backlight Time

- Use **-**, **+** to move to the Backlight Time you want and press the **M** button.
- You can set the Backlight Time to time between 3 seconds and 1 minutes, or Always On.
- When set to Always On, the backlight stays on continuously.
- When the backlight is turned off, the backlight is turned on even if any button is pressed. Press the corresponding button again after the backlight is turned on.



Tag Info.

- Use **-**, **+** to move to Tag Info. On or Off and press the **M** button.
- On : The title and artist contained in the file tag information are displayed during playback.
- Off : Display the name of music file.



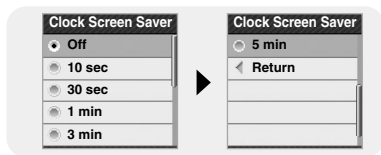
Note

- What is an ID3 tag ?

This is what is attached to an MP3 to carry information relevant to the file, such as the title, artist, album, year, genre and a comment field.

Clock Screen Saver

- Use **-**, **+** to move to the Clock Screen Saver time you want and press the **M** button.
- You can set the time to wait to Off, or time between 10 seconds and 5 minutes. If no button is pressed during playback, the clock screen appears automatically after the time you set.
- When set to Off, the normal playback screen displays.



Language


- Use **-**, **+** to select the language for displaying Tag information and menu and press the **M** button.
- Korean → English → French → German → Italian → Japanese → Simp. Chinese → Spanish → Trad. Chinese → Russian → Hungarian → Dutch → Polish → Portuguese → Swedish




Note

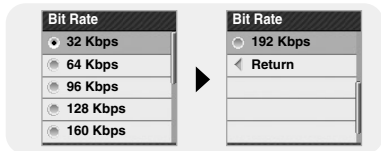
- The supported languages can be changed or added.

Record Settings


Press and hold the  button. Select Settings → Record.

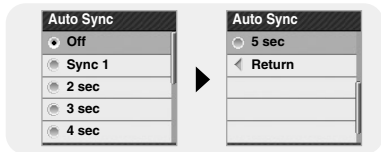
Bit Rate

- Use **-**, **+** to move to the recording bit rate you want and press the  button.
- When recording music into an MP3 file, you can select one of the following bit rates : 32kbps, 64kbps, 96kbps, 128kbps, 160kbps and 192kbps.




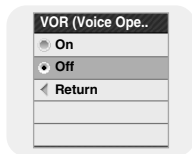
Auto Sync

- Use **-**, **+** to move to the Auto Sync you want and press the  button.
- Auto Sync Time is a function for separating and saving MP3 files when there is no sound for a set time during MP3 recording.
- Auto Sync Time can be set to Off, Sync 1, 2 seconds, 3 seconds, 4 second, or 5 seconds.
- In SYNC 1 setting, recording stops when there is no sound for over 2 seconds during recording.
- If Auto Sync Time is set to Off, recording keeps going even if there is no sound, and then it is saved as one file.



VOR (Voice Operation Recording)


- Use **-**, **+** to move to VOR On or Off and press the  button.
- On : Recording stops if there is no sound.
- Off : Recording continues regardless of voice volume.



Time Settings

Press and hold the  button. Select Settings → Time.


Sleep

- Use **-**, **+** to move to the Sleep time you want and press the  button.
- Sleep time can be set to Off, 15~120 minutes.
The player will automatically turn off after the time you set.
- When set to Off, the function is disabled.



Time Settings

Alarm Set

- 1 Use **-**, **+** to set the alarm Off, Once or Everyday and press the **▶▶** button.
- 2 Use **-**, **+** to set the time and press the **▶▶** button.
- 3 After the setting is completed, move to [OK] and press the  button.
 - When the power is off while the alarm is set, the player will automatically turn on at the time you set.




Note

- After setting Alarm, the alarm icon will be displayed.
- The player is turned on at the set alarm time and it is automatically turned off in 1 minute if no button is pressed.


Time Set


You can set the current date and time.

- 1 Use **-**, **+** to set the time and press the **▶▶** button.
- 2 Use **-**, **+** to set the date and press the **▶▶** button.
- 3 After the setting is completed, move to [OK] and press the  button.



Play Speed Settings

1 Press and hold the  button. Select Settings → Play Speed.


2 Use **-**, **+** to move to the desired Play Speed, and then press the  button.

- The higher the number, the faster the speed of play, and the lower the number, the slower the speed of play.





ENG

System Settings

Press and hold the  button. Select Settings → System.

Delete File

1 Move to the file you want to delete and press the  button.

2 Use **-**, **+** to move to [OK] and press the  button.



- The selected file is deleted.

System Settings

Beep

- Use **-**, **+** to move to Beep On or Off and press the **M** button.
- On : The unit beeps when the buttons are pressed.
- Off : The unit does not beep.



Skip Interval

- Use **-**, **+** to move to the Skip Interval you want and press the **M** button.
- You can set the Skip Interval Time to Track or time between 5 seconds and 10 minutes.
- If you set the Skip Interval to Track, then press the **⏮**, **⏭** button, the previous or next track will be selected.

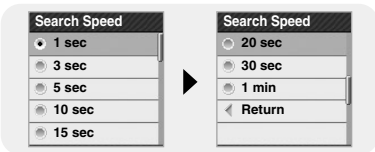


Note

- For a VBR or Ogg file, the Skip Interval may not be exact.

Search Speed

- Use **-**, **+** to move to the Search Speed you want and press the **M** button.
- You can set the Search Speed to skip 1 second to 1 minute sections within a song.
- You can determine the amount of time interval to be moved when you press and hold the **⏮**, **⏭** button in the music mode.

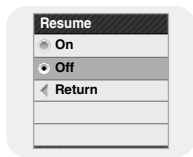


Note

- For a VBR or Ogg file, the Search Speed may not be exact.

Resume

- Use **←**, **+** to move to Resume On or Off and press the **M** button.
- On: Playback will resume from the point it was previously stopped.
- Off: Playback will resume from the beginning of the file/track that was playing when stopped.



Auto Off Time

- Use **←**, **+** to move to the Auto Off Time you want and press the **M** button.
- You can set the Auto Off Time to Off or time between 5 seconds and 3 minutes. If no button is pressed after play stops, the player will automatically turn off after the time you set.
- When set to Off, the function is disabled.



Intro Time

- Use **←**, **+** to move to the Intro Time you want and press the **M** button.
- You can set the Intro Time from 10 seconds to 1 minutes. When you select the Intro function, the beginning of all files will be played back for the seconds you set.



System Settings

Default Set

- Use **◀▶** to move to [OK] or [Cancel] and press the **[M]** button.
- **OK** : All settings selected will be returned to the original factory settings.
- **Cancel** : All settings selected will remain as they are.



Format

- Use **◀▶** to move to [OK] or [Cancel] and press the **[M]** button.
- **OK** : Memory is formatted and all saved files are deleted.
- **Cancel** : Memory is not formatted.



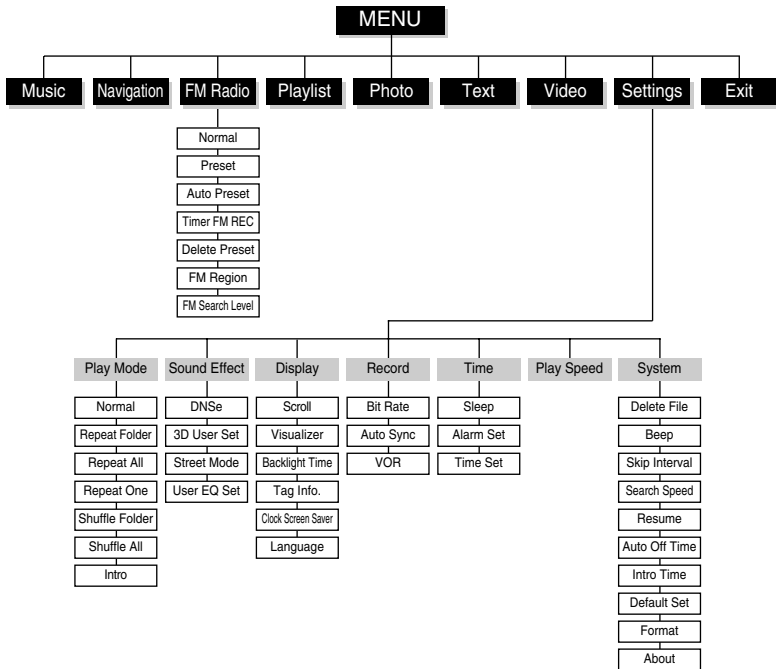
Note

- Care must be taken as formatted files can not be recovered.

About

- If you select About, you can check the firmware version, file information and memory capacity.





- Use the **←**, **→** buttons to move and use **OK** button to select.

The software doesn't function properly

- Refer to the System Requirements
-

The player does not work and the LCD displays nothing.

- Reset the player by pressing the RESET Hole using a pointed object such as a safety clip.
 - Check the battery charge status of the player.
-

In PLAY mode, music is not played after pressing the ►|| button

- Check to see if MP3 or WMA files are saved in the built-in memory.
 - Check to see if the HOLD button is locked.
-

Files cannot be downloaded.

- Check to see if the driver is installed correctly in the computer.
 - Check the connection between the player and PC.
 - Reset the player by pressing the RESET Hole using a pointed object such as a safety clip.
 - Check if the memory is full.
-

Backlight does not work.

- Check the backlight setup.
 - When the battery power is low, the backlight will go out.
-

The buttons do not work.

- Check to see if the HOLD button is locked.
- Reset the player by pressing the RESET Hole using a pointed object such as a safety clip.

The player keeps being turned off.

- In Stop mode, the power is automatically turned off (changes depending on settings).
 - Check to see if there are files saved in it.
-

Something's wrong with play time displayed during Play mode.

- Check to see if a VBR file is playing.
-

The file name is not displayed correctly.

- Move to [Settings] → [Display] → [Language] in the Menu and then change the language setting.
-

There is a file saved in the player, but "No File" appears in the screen.

- Check to see if MP3 or WMA files are saved in the built-in memory.
-

I cannot properly connect the player to the PC.

- Win98 : try to connect again after installing Driver.
- Win ME/2000/XP :Press Start in the desktop to execute Windows Update. After selecting important update and service pack, execute update all.
Try to connect it again after rebooting PC.

Specifications

Model	YP-T7F
Built-in Memory capacity	YP-T7F V(256MB) / YP-T7F X(512MB) / YP-T7F Z(1GB) / YP-T7F Q(2GB)
Built-in Rechargeable Battery Capacity	380mAh
Voltage	3.7V (Li-polymer)
Play Time	Music: 10 Hours, Video : 3 Hours (based on the measurement by the company)
Supported Number of Files	Max. 2000
Dimensions/Weight	37 X 62 X 14mm/40g
Case	Magnesium/Aluminum/Plastic
Maximum File Transfer Data Rate	120Mbps
Noise Ratio	90dB with 20kHz LPF (based on 1kHz 0dB)
Earphones Jack Output Power	20mW(16Ω)
Output Frequency Range	20Hz~20kHz
Operating Temperature Range	-5~ +35°C (23~95°F)
FM Frequency	87.5~108.0MHz
FM Signal to Noise Ratio	45dB
FM T.H.D	1%
FM Useable Sensitivity	10dB
File Support	AUDIO : MP3(MPEG1/2/2.5 Layer3), Audio ASF, WMA, Ogg(Q0 ~ Q10) IMAGE : JPEG(ISO/IEC 10918-1/Annex F-Sequential DCT-based mode of operation) VIDEO : MPEG4(QCIF 10~15 Frame)

The product unit accompanying this user manual is licensed under certain intellectual property rights of certain third parties. This license is limited to private non-commercial use by end-user consumers for licensed contents.

No rights are granted for commercial use. The license does not cover any product unit other than this product unit and the license does not extend to any unlicensed product unit or process conforming to ISO/IEC 11172-3 or ISO/IEC 13818-3 used or sold in combination with this product unit. The license only covers the use of this product unit to encode and/or decode audio files conforming to the ISO/IEC 11172-3 or ISO/IEC 13818-3. No rights are granted under this license for product features or functions that do not conform to the ISO/IEC 11172-3 or ISO/IEC 13818-3.

MEMO



Free Manuals Download Website

<http://myh66.com>

<http://usermanuals.us>

<http://www.somanuals.com>

<http://www.4manuals.cc>

<http://www.manual-lib.com>

<http://www.404manual.com>

<http://www.luxmanual.com>

<http://aubethermostatmanual.com>

Golf course search by state

<http://golfingnear.com>

Email search by domain

<http://emailbydomain.com>

Auto manuals search

<http://auto.somanuals.com>

TV manuals search

<http://tv.somanuals.com>