

SAMSUNG



For Your Safety

Read this manual carefully to ensure proper use of the product and to avoid any danger or physical damage.



WARNING

Failing to heed the product instructions may cause serious injury.

Product Use

Improper use can result in explosion, fire or electric shock.



Do not disassemble, repair or modify this product on your own.



Do not get the product wet or drop it in water.

If the product gets wet, do not switch it on. Contact a Service Center.



Do not place the product in damp, dusty or sooty areas, as it could result in fire or electric shock.



Do not leave the product in areas above 35°C(95°F) (such as a sauna or inside a parked car).

During the summer the temperature inside a car may rise up to 80°C(176°F).

Take care to avoid physical damage.



Take care not to tangle the earphone cable around your arms or neighboring objects while driving, working out or walking, as it could result in a car accident or other injuries.



Avoid using your product at high volume levels, as it may result in permanent hearing damage. If you experience ringing in your ears while using the earphone, remove the earphone immediately and lower the volume.



CAUTION

Failure to follow all instructions lead to physical injuries or damage to the product.

Product Use

Take care to avoid product malfunction and physical damage.



When wearing the product around your neck, take care not to exert excessive force on the neck string.

Management of Important Data



Be sure to backup important data.

Please be aware that we claim no responsibility for damage from data loss due to breakdown, repair or other causes.

Avoid malfunction



Do not cause excessive impact on the product by dropping it. Do not place heavy objects on top of the product.



Prevent any foreign particles or dust from entering into the product.



Always use the accessories provided by or approved by Samsung.



Do not spray water on the product. Never clean the product with chemical substances such as benzene or thinner, as it may cause fire, electric shock or deteriorate the surface.



Do not place the product near magnetic objects, as it may cause a malfunction.

Contents

Safety Precautions	2
Contents	4

Chapter 1. | Preparation

Checking the Product and Accessories	7
Checking the Accessories	7
Components	8
Screen Display Information	10
Button Functions	11
Charging the battery	13
Basic Use	14

Chapter 2. | Connecting to a PC

Connecting to a PC	18
Transferring Music to your Player	19

Chapter 3. | Listening to Music

Listening to Music	22
Transferring Playlists from WMP10	25
To Play a Playlist	27
Shuffle Play (Random Repeat)	28
Checking the Music Information	30

Chapter 4. | Picture Viewing

Picture Viewing	32
Picture Enlarging/Slideshow Viewing	33

Chapter 5. | Setup

Setup	35
Audio Setup	35
Display Setup	36
Slideshow Setup	37
Repeat Setup.....	38
Timer Setup	39
Language Setup	40
Reset	41
Checking the System Information.....	42

Chapter 6. | Troubleshooting & Appendix

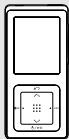
System Reset	44
To Upgrade Firmware	45
Troubleshooting	47
Menu Tree	50
Product Specifications	51
License	52
Safety Information	54
Warranty	56

Chapter 1. Preparation

Checking the Product and Accessories	7
Charging the battery	13
Basic Use	14

Checking the Accessories

The following diagrams are a guide and may differ slightly from the actual product appearance.



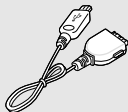
Player



Earphones

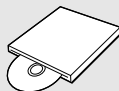
AH30-00086D(White)

AH30-00087D(Black)



USB Cable

AH39-00783B



Easy Start CD

AH80-00131A

- Design of accessories is subject to change for the purpose of improvement, without notice.

Easy Start CD Overview

What is Easy Start CD?

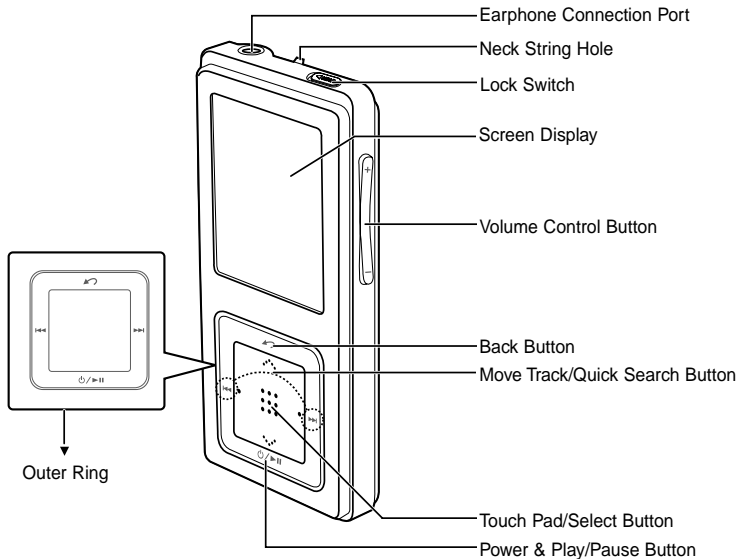
- The Easy Start CD provides a simple way for you to get started using a PlaysForSure™, portable music device by quickly and easily installing any necessary software needed including Windows Media Player 10 and support for online music stores. This CD will also show you how to rip CDs, download new music from an online store, manage your music with Windows Media Player 10 and take it with you on your new portable music device.

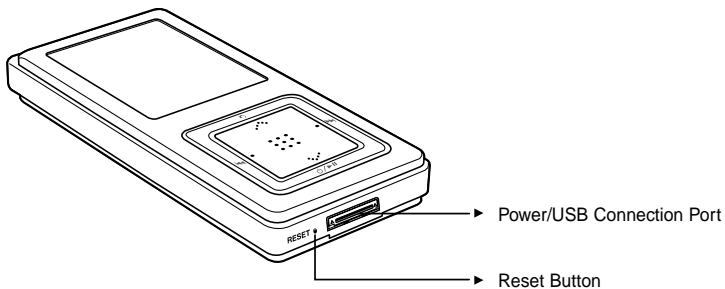
What is PlaysForSure?

- PlaysForSure is a logo and testing program that ensures content compatibility of online music stores and portable music devices. When you see the PlaysForSure logo on the product box of a music device, you know it will work with content from the widest range of online stores and services that also carry this logo.

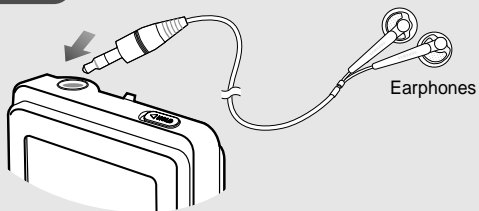
Components

Front, Right Side and Top

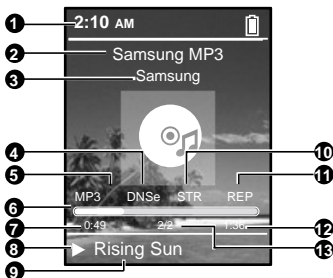


Bottom**Earphone Connection**

▶ Top



Screen Display Information










- | | |
|------------------------------------|-----------------------------------------------|
| 1 Current Time Display | 8 Play/Pause Display |
| 2 Album Title Display | 9 Music Title Display |
| 3 Album Display | 10 Street Mode Display |
| 4 3D Sound Displays | 11 Repeat Play Display |
| 5 File Type Display (MP3, WMA etc) | 12 Total Play Time Display |
| 6 Play Status Bar | 13 Current Music Number/ Total Number Display |
| 7 Play Time Display | |



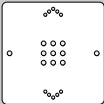
NOTE

- The screen pictures are for illustration purposes only. The actual screen may differ.

Button Functions

Buttons	Functions and Use
	<ul style="list-style-type: none"> ■ Long press for power on/off. ■ Short press for play/pause.
	<ul style="list-style-type: none"> ■ Long press to move to the Menu screen. ■ Short press to move to the previous screen.
	<ul style="list-style-type: none"> ■ Long press to scan to a point on the current track. ■ Short press to move to the previous track or to play the current track from the start.
	<ul style="list-style-type: none"> ■ Long press to scan to a point on the current track. ■ Short press to move to the next track.
	<ul style="list-style-type: none"> ■ Push in the direction of the arrow to lock the button functions.
	<ul style="list-style-type: none"> ■ Press with a pointed object to reset.
	<ul style="list-style-type: none"> ■ Press to reduce/increase the volume.

Button Functions (Continued)

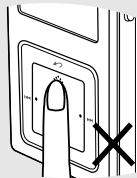
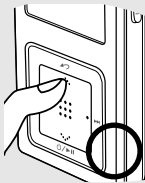
Buttons	Functions and Use
	<ul style="list-style-type: none"> ■ Moving up, down, left and right and Function Selection <ul style="list-style-type: none"> ◀ Tap on the top or bottom side to move up or down by one selection. ◀ Tap on the left or right side to move left or right by one selection (Picture mode). ◀ Tap and hold on top or bottom side to move up or down continuously. • Press the center of the Touchpad to select the function and move to the next screen.



CAUTION

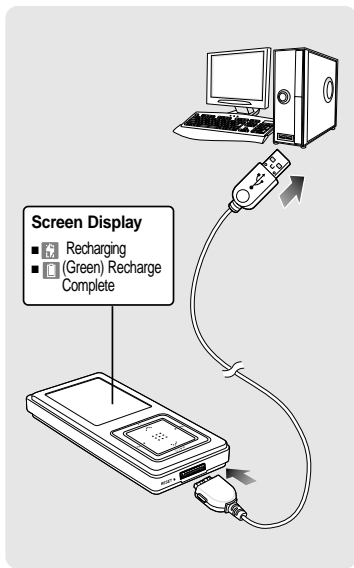
- Do not use any sharp object other than your fingers to operate the touchpad. Otherwise, touchpad may be damaged.

- * The touchpad works better when pressed lightly with a fingertip.



Charging the battery

Fully charge the battery before using the player for the first time or when the it has not been used for a while.



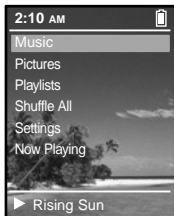
- 1** Connect the USB cable to the USB port () on your PC.
- 2** Connect the other end of the USB cable to the Power/USB Connection Port on bottom of the player.
 - <Connected> appears on the screen display of the player.
 - When connected with the USB cable, it takes about 4 hours for a full charge although this may vary depending on the PC environment.

Battery Use

- Recharge and store within the temperature range of 5°C~35°C(40°F~95°F).
- Do not overcharge (longer than 12 hours). Excessive charging or discharging may shorten the battery's life.
- Battery life naturally shortens slowly over time as it is a consumable item.

Basic Use

Turning the Power On & Off



Turning the Power On

Press and hold the [⏻/▶] button

- Power is turned on.

Turning the Power Off

Press and hold the [⏻/▶] button

- Power is turned off.
- Power is automatically turned off when none of the buttons have been pressed for a preset period of time (Default: 1 minute) in the pause mode.

Playing Music



1 Press and hold the [⏪] button to move to the Menu screen.

2 Tab on the [⋮] to select <Music>, then press the [Touch Pad].

- The Music Menu will appear.

3 Tab on the [⋮] to select a music file of your choice.

4 Press the [Touch Pad].

- The music file will begin playing.



NOTE

- Press the [⏪] button to move to the previous screen.
- Press and hold the [⏪] button to move to the Menu screen.

Download from www.Somanuals.com. All Manuals Search And Download.

Volume Control



Press the [+ , -] button on the side of the unit.

- The Volume Status Bar will appear.
- Press the + button to increase the volume or the – button to decrease it.

Lock Function

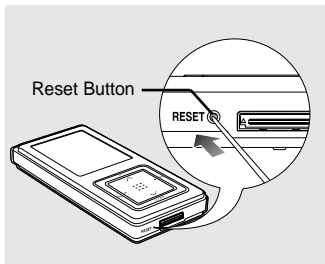


In Hold mode, all buttons are disabled. This function is useful when you are walking or jogging.

- 1 Push the [HOLD] button on the top of the unit in the direction of the arrow.
- 2 Push the [HOLD] button in the opposite direction of the arrow to release the Lock function.

Basic Use (Continued)

Reset Function



If a product malfunction occurs, you can re-initialize the system by pressing the Reset button. ►P44

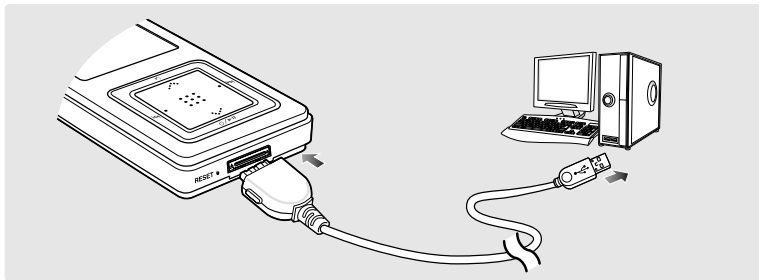
Chapter 2. Connecting to a PC

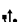
Connecting to a PC	18
Transferring Music to your Player.....	19

Connecting to a PC

Before you start!

Use the USB Cable provided when connecting the product to a PC.



- 1 Connect the USB cable to the USB port () on your PC.
- 2 Connect the other end of the USB cable to the Power/USB Connection Port on bottom of the player.
 - <Connected> appears on the screen display of the player.

PC Requirements

For use in conjunction with a PC, the following is required:

- Pentium 300MHz or higher
- Windows XP Service Pack 1 or higher
- 100MB of free hard disc space
- CD Rom Drive (2X or higher)
- USB Port 2.0 only
- DirectX 9.0 or higher
- Windows Media Player 10.0 or higher



- If you connect the player through a USB hub, the connection may be unstable. Please connect the player to the computer directly.

CAUTION

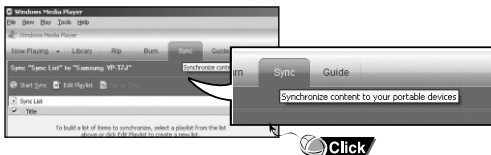
Download from www.Somanuals.com. All Manuals Search And Download.

Transferring Music to your Player

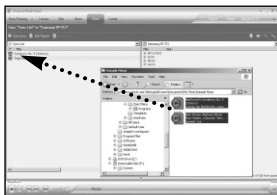
1 Run Windows Media Player10.

- Select [Start] → [Programs] → [Windows Media Player] on the Desktop.

2 Select [Sync] at the top of the screen.



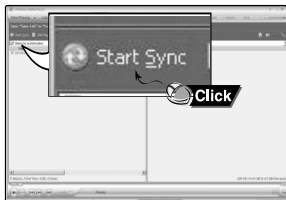
- ## 3
- When the [Sync] window appears, select the file you want to transfer to the player, drag and drop it to the left [Sync List] window.



NOTE

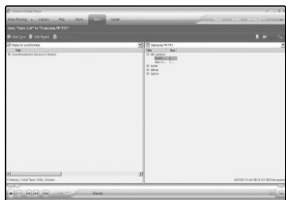
- For an in-depth tutorial on how to transfer music files, refer to the Easy Start CD that comes with the product

Transferring Music to your Player (Continued)



4 Make sure the music files you want to download are checked, and then press [Start Sync] at the top of the screen.

- [Synchronized to Device] message will appear on the left window. The downloaded files will appear in the right window under Music folder.



5 You can check the transferred file in the right window.

Chapter 3. | Listening to Music

Listening to Music	22
Transferring Playlists from WMP10	25
To Play a Playlist	27
Shuffle Play (Random Repeat)	28
Checking the Music Information	30

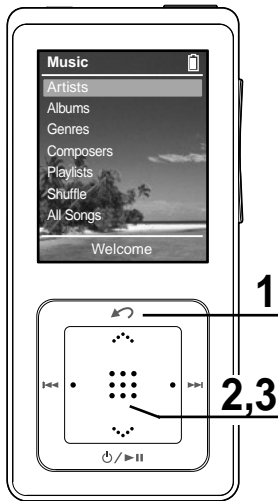
- **Before you start!**

Transfer the music file of your choice from your PC to the player.

Listening to Music

Before you start!

Connect the earphones, then switch on the player, and check the battery.



E.g. Playing by Artist

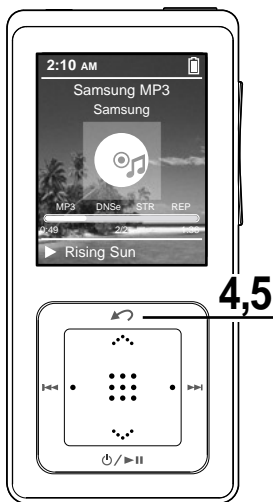
- 1** Press and hold the [] button to move to the Menu screen.
- 2** Tab on the [] to select <Music>, then press the [Touch Pad].
 - The Music Menu will appear.
- 3** Tab on the [] to select <Artists>, then press the [Touch Pad].

Music Menu

- <Artists> : To play by artist
- <Albums> : To play by album
- <Genres> : To play by genre
- <Composers> : To play by composer
- <Playlists> : To play by Playlist
- <Shuffle> : To play continuously in random order
- <All Songs> : To play in numeric or alphabetical order


NOTE

- The music files compatible with the player are MP3, WMA, Secure WMA.
- MP1 or MP2 files which only have a changed extension to MP3, may not play on the player.
- A file without an ID3 Tag (music information) is displayed as [unknown].



4 Tab on the [⋮⋮⋮] to select an artist, then press the [Touch Pad].

- The albums for the artist will appear.

5 Tab on the [⋮⋮⋮] to select an album, then press the [Touch Pad].

- The music files for the selected album will appear.

6 Tab on the [⋮⋮⋮] to select a music file to play, then press the [Touch Pad].

- The music will start playing.
- The Play Screen can be changed by pressing the [Touch Pad].

To Pause

1 Press the [⏻/▶▶] button while the music is playing.

- The music playback will be paused.

2 Press the [⏻/▶▶] button again.

- The music will play from the point where it stopped.



NOTE

- Power is automatically turned off when none of the buttons have been pressed for a preset period of time (changes depending on settings shown on page 37) in the pause mode.

Listening to Music (Continued)

To search within a track

- 1 Press and hold the [|◀◀] or [▶▶|] button while the selected track is playing.**
 - It searches to the beginning or the end of the track.
- 2 Release the button at the point you wish to start.**
 - It starts playing from the point you release the button.

To Play from the beginning of the current track

Press the [|◀◀] button after 10 seconds of play.

- The current track starts playing from the beginning.

To play the previous/next track

Press the [|◀◀] button within 10 seconds of play.

- The previous track will start playing.

Press the [▶▶|] button.

- The next track will start playing.



- When playing VBR files, the previous track may not play even if you press the [|◀◀] button within 10 seconds of the play.

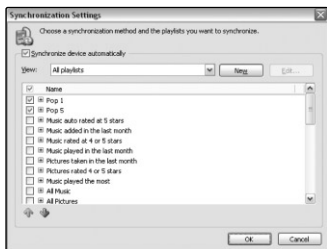


- Press the [|◀◀] button within 10 seconds of play to move to the previous track.

Transferring Playlists from WMP10



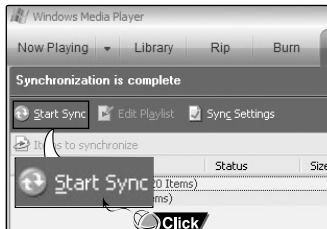
- 1 To transfer playlists from WMP10, click on “Sync Settings” in the WMP10 menu on your PC.



- 2 Select the playlists you want to sync (transfer) to your player.

Transferring Playlists from WMP10 (Continued)

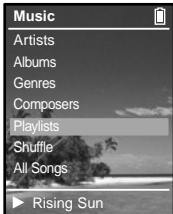
- 3** Click on Start Sync in the WMP10 menu. The Playlists will be transferred to your player and will appear in the Playlists menu.



To Play a Playlist

Make your own Playlist by genre or artist.

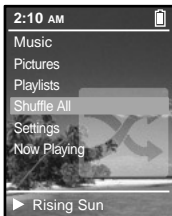
Playlists transmitted from Windows Media Player 10 are displayed in the <Playlists> menu. Please refer to WMP10 for transferring Playlists.



- 1 Press and hold the [↵] button to move to the Menu screen.
- 2 Tab on the [⋮] to select <Music>, then press the [Touch Pad].
 - The Music Menu will appear.
- 3 Tab on the [⋮] to select <Playlists>, then press the [Touch Pad].
 - The Playlist(s) will appear.
- 4 Tab on the [⋮] to select the <Playlist> of your choice, then press the [Touch Pad].
 - The music files saved in the selected Playlist will appear.
- 5 Tab on the [⋮] to select a music file to play, then press the [Touch Pad].
 - The music file will start playing.

Shuffle Play (Random Repeat)

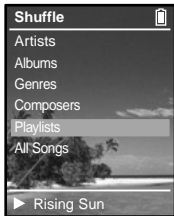
Shuffle Play All Music



- 1** Press and hold the [↶↷] button to move to the Menu screen.
- 2** Tab on the [⋮] to select <Shuffle All>, then press the [Touch Pad].
 - Music files will appear.
- 3** Tab on the [⋮] to select a music file to play, then press the [Touch Pad].
 - The file selected, then all music files contained on the player will start playing in random order.

Shuffle Play by Type

E.g. Shuffle Play by Artist



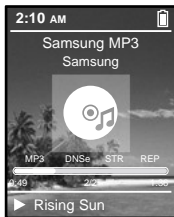
Shuffle Menu

- <Artists> : To play by artist
- <Albums> : To play by album
- <Genres> : To play by genre
- <Composers> : To play by composer
- <Playlists> : To play by Playlist
- <Shuffle> : To play continuously at random
- <All Songs> : To play in numeric or alphabetical order

- 1 Press and hold the [↶] button to move to the Menu screen.
- 2 Tab on the [⋮] to select <Music>, then press the [Touch Pad].
 - The Music Menu will appear.
- 3 Tab on the [⋮] to select <Shuffle>, then press the [Touch Pad].
 - The Shuffle Menu will appear.
- 4 Tab on the [⋮] to select <Artists>, then press the [Touch Pad].
 - Artist list will appear.
- 5 Tab on the [⋮] to select an artist, then press the [Touch Pad].
 - The music files for the selected artist will appear in random order.
- 6 Tab on the [⋮] to select a music file to play, then press the [Touch Pad].
 - The music files under that particular <Artist> will start playing continuously in random order.

Checking the Music Information

You can move to the Music Info screen to check the music currently playing.

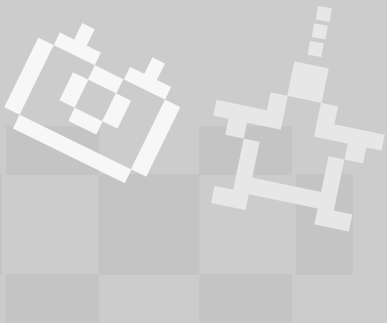


- 1** Press and hold the [↶] button to move to the Menu screen.
- 2** Tab on the [⋮] to select <Now Playing>, then press the [Touch Pad].
 - The music information screen for the track currently playing will appear.



NOTE

- Pressing [Touch Pad] will cycle through various Now Playing screens.



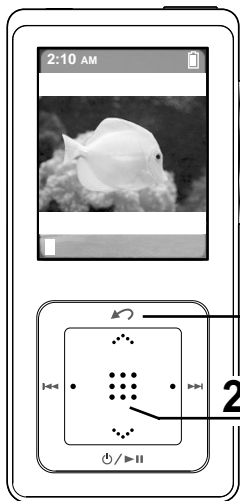
Chapter 4. | Picture Viewing

Picture Viewing.....	32
Picture Enlarging/Slideshow Viewing...	33

■ Before you start!

Transfer picture files to the player using WMP10. For further details, refer to WMP10 software's Help section.

Picture Viewing



1 Press and hold the [↶] button to move to the Menu screen.

2 Tab on the [⋮] to select <Pictures>, then press the [Touch Pad].

- The Picture Folder list will appear.
Tab on the [⋮] to select a folder, then press the [Touch Pad] to display the pictures.

3 Tab on the [⋮] to select the picture file of your choice, then press the [Touch Pad].

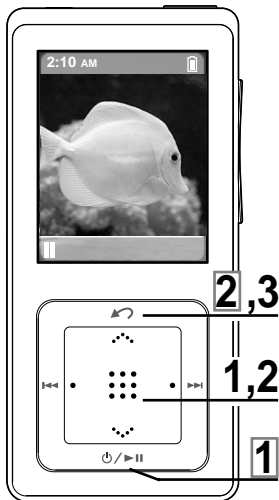
- The selected file will appear.
- Large pictures may take longer to display.



NOTE

- Press the [⏪⏩] button while viewing a picture to display the previous or next picture.
- Press and hold the [Touch Pad] button while viewing a picture to make it the background of the player.

Picture Enlarging/Slideshow Viewing



Picture Enlarging

- 1** Press the [Touch Pad] in the Picture Viewing mode.
 - The picture will be gradually enlarged (2x/3x/4x) each time the [Touch Pad] is pressed.
- 2** Touch the [Touch Pad] lightly and slide up,down,left or right to move around the enlarged picture.
 - You can move to the area of your choice.
- 3** Press the [↶] button to cancel the enlargement.
 - The picture will be gradually downsized each time the [↶] button is pressed.

Slideshow Viewing

- 1** Press the [⏻/▶||] button in Picture Viewing mode.
 - The slideshow will start.
- 2** Press the [↶] button to stop the slideshow.



NOTE

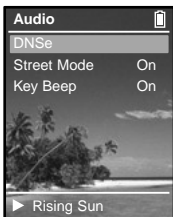
- Please refer to P37 for set the Start Time or interval of the Slideshow.



Chapter 5. | Setup

Setup	35
Audio Setup	35
Display Setup.....	36
Slideshow Setup	37
Repeat Setup.....	38
Timer Setup	39
Language Setup	40
Reset	41
Checking the System Infomation.....	42

You can set detail functions and button sounds for music play.



1 Press and hold the [↵] button to move to the Menu screen.

2 Tab on the [⋮] to select <Settings>, then press the [Touch Pad].

- The Settings screen will appear.

3 Tab on the [⋮] to select <Audio>, then press the [Touch Pad].

- The Sound Settings Menu will appear.

4 Use the [Touch Pad] to select and set the desired functions.

What is DNSe?

- DNSe is a sound effect function for MP3 players developed by Samsung and consists of 3D and Street modes. The 3D adds a stereophonic sound effect to the music and the Street mode provides an automatic volume control function that amplifies quiet sounds in noisy street environments.

- <DNSe> : You can select a suitable sound for each music genre. Select one from <Normal> <3D-Club> <3D-Stage> <3D-Studio> <Ballad> <Classical> <Jazz> <Dance> <House> <R & B> or <Rock>.
- <Street Mode>: Enables clear sound quality outdoors. Select either <Off> or <On>.
- <Key Beep>: Enables button sounds. Select either <Off> or <On>.



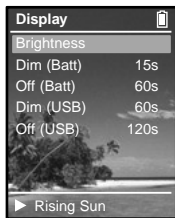
NOTE

Button functions for Setup

- Tab on the [⋮] to move up or down in the current Menu.
- Press the [Touch Pad] to select a Menu and save.
- Press the [↵] button to move to the previous screen.

Display Setup

You can adjust the brightness and the turn-off time for the screen display.



1 Press and hold the [↶] button to move to the Menu screen.

2 Tab on the [⋮] to select <Settings>, then press the [Touch Pad].

- The Settings screen will appear.

3 Tab on the [⋮] to select <Display>, then press the [Touch Pad].

- The Display Setup Menu will appear.

4 Use the [Touch Pad] to select and set the desired functions.

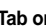
- <Brightness> : You can adjust the brightness for the screen display.
Tab on the left side of the [Touch Pad] to darken, or on the right side of the [Touch Pad] to brighten.
- <Dim(Batt)> : When running on battery power, the screen display will darken if none of the buttons have been pressed for a preset period of time.
Select either <-- (Always On)> <15s> <30s> <60s> or <120s>.
- <Off(Batt)> : When running on battery power, the screen display will be automatically turned off if none of the buttons have been pressed for a preset period of time.
Select either <-- (Always On)> <15s> <30s> <60s> or <120s>.
- <Dim(USB)> : When connected via USB, the screen display will dim if none of the buttons have been pressed for a preset period of time.
Select either <-- (Always On)> <15s> <30s> <60s> or <120s>.
- <Off(USB)> : When connected via USB, the screen display will be automatically turned off if none of the buttons have been pressed for a preset period of time.
Select either <-- (Always On)> <15s> <30s> <60s> or <120s>.

Slideshow Setup

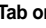
You can set the Start Time or interval of the slideshow.



1 Press and hold the [] button to move to the Menu screen.

2 Tab on the [] to select <Settings>, then press the [Touch Pad].

- The Settings screen will appear.

3 Tab on the [] to select <Slideshow>, then press the [Touch Pad].

- The Slideshow Setup Menu will appear.

4 Use the [Touch Pad] to select and set the desired functions.

- <Start(Batt)> : When running on battery power, you can set the start time of the slideshow after the Menu and function screen disappears.
Select either <Off> <1m> <5m> <10m> or <15m>.
- < Start(USB)> : When connected via USB, you can set the start time of the slideshow after the Menu and function screen disappears.
Select either <Off> <1m> <5m> <10m> or <15m>.
- <Slide Time> : You can set the interval for the slideshow.
Select either <2s> <5s> <15s> <30s> or <60s>.
- <Shuffle> : All picture files contained on the player will start viewing in random order.
Select either <Off> or <On>.

Repeat Setup



- 1** Press and hold the [↶] button to move to the Menu screen.
- 2** Tab on the [⋮] to select <Settings>, then press the [Touch Pad].
 - The Settings screen will appear.
- 3** Tab on the [⋮] to select <Repeat>.
- 4** Press the [Touch Pad] to select the desired play mode.
 - You can select <Off> (Cancel Repeat) <One> (Single Track Repeat) or <All> (Repeat All).

Timer Setup



1 Press and hold the [↵] button to move to the Menu screen.

2 Tab on the [⋮] to select <Settings>, then press the [Touch Pad].

- The Settings screen will appear.

3 Tab on the [⋮] to select <Time>, then press the [Touch Pad].

- The Time Setup Menu will appear.

4 Use the [Touch Pad] to select and set the desired functions.

- <Sleep Timer> : You can set the power to turn off automatically after a preset period of time. The player will automatically turn off after the time you set. Select either <Off> <90m> <60m> <45m> <30m> or <15m>.
- <Set Time> : You can set the current time. Press the [Touch Pad] to move to <Hour, Minute, AM/PM>, then tap on the [⋮] to set the time. Press the [Touch Pad] after setup is complete.

Language Setup



- 1** Press and hold the [↵] button to move to the Menu screen.
- 2** Tab on the [⋮] to select <Settings>, then press the [Touch Pad].
 - The Settings screen will appear.
- 3** Tab on the [⋮] to select <Language>, then press the [Touch Pad].
 - The Language Settings screen will appear.
- 4** Tab on the [⋮] to select a language of your choice, then press the [Touch Pad].
 - The language of your choice is set and you are returned to the previous screen. Select either <English>, <Deutsch>, <Español> or <Français>.



- The supported languages can be changed or added.

NOTE

You can reset all settings to the default value.



- 1** Press and hold the [**↵**] button to move to the Menu screen.
- 2** Tab on the [**⋮**] to select <Settings>, then press the [Touch Pad].
 - The Settings screen will appear.
- 3** Tab on the [**⋮**] to select <Reset Settings>, then press the [Touch Pad].
 - The Reset Confirm screen will appear.
- 4** Tab on the [**⋮**] to select either <Cancel> or <Reset>, then press the [Touch Pad].
 - Select <Cancel> to maintain the previous setup.
 - Select <Reset> to re-initialize the setup.

Checking the System Information

You can check the memory, product version and copyright information.



- 1 Press and hold the [↵] button to move to the Menu screen.
- 2 Tab on the [⋮] to select <Settings>, then press the [Touch Pad].
 - The Settings screen will appear.
- 3 Tab on the [⋮] to select <System Info>, then press the [Touch Pad].
 - The System Info screen will appear.
- 4 Check the necessary information with the [Touch Pad].

- <Capacity> : You can check the total memory, memory available, total number of songs, albums or artists information.
- <Version> : You can check the firmware version.
- <About> : You can check the copyright information.



CAUTION

■ Regarding the Built-In Memory

The actual built-in memory available is slightly less than indicated as the internal firmware uses a portion of the memory.

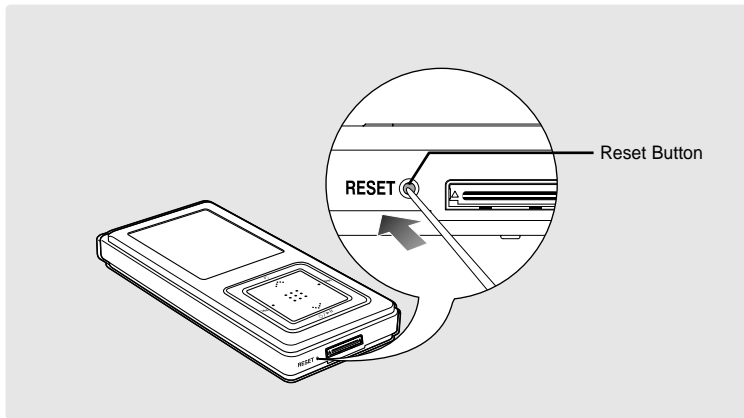


Chapter 6. Troubleshooting & Appendix

System Reset	44
To Upgrade Firmware	45
Troubleshooting	47
Menu Tree	50
Product Specifications	51
License	52
Safety Information	54
Warranty	56

System Reset

If a product malfunction occurs, you can re-initialize the system by pressing the Reset button.



Press the Reset Button at the bottom of the product with a pointed object such as a safety clip.

- The system will be initialized.
- The Reset function will not delete data stored in the built-in memory.

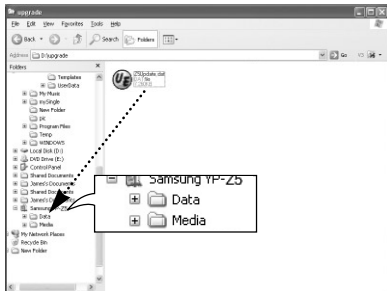
To Upgrade Firmware

Future upgrades may be available for this player to enhance performance and compatibility.

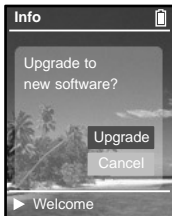
- 1** Connect to <http://www.samsung.com>, select [SUPPORT] → [DOWNLOAD CENTER] and then select your product.
- 2** When the product page appears, select [Firmware] below the model name to download the latest firmware.
- 3** Uncompress the downloaded file in a folder.
 - DAT file will be displayed.
- 4** Connect the player to your PC with the USB cable.
- 5** Right click on the Start button, then choose Explore to Open Windows Explorer on your PC.
 - [Samsung YP-Z5] is displayed in Windows Explorer.

To Upgrade Firmware (Continued)

- 6 Select the uncompressed files and drag-and-drop it into [Samsung YP-Z5] → [Data].



- 7 After disconnecting the USB Cable, the upgrade screen will appear.
Select [Upgrade] to upgrade firmware.



- 8 Connect the player to your PC with the USB cable.
- The firmware will be upgraded. It will take 1 minute or so.



NOTE

- Check the battery charge status of the player. If the battery is not sufficiently charged, the firmware will not be upgraded.
- Please ensure that there is at least 30MB of unused space on the device when starting the upgrade procedure.

Troubleshooting

If a malfunction is experienced, check the following. If the problem persists, contact Samsung Customer Service at 1-800-SAMSUNG.

Problem	Check points & Troubleshooting
Power will not turn on.	<ul style="list-style-type: none">■ Power will not turn on if the batteries are fully discharged. Recharge the batteries and turn the power on again.
Buttons do not work.	<ul style="list-style-type: none">■ Check if the [HOLD] switch is in the ◀ HOLD position.■ Check if you pressed the right button, then press again.■ Press the Reset Button.
The screen will not turn on.	<ul style="list-style-type: none">■ If you had set <Off(Batt)> or <Off(USB)> in <Settings> in the <Display> Menu, the screen may look very dim. Press a button to turn on the screen.■ The screen may not be visible under direct sunlight.
Power is turning off.	<p>The power is automatically turned off when the battery is fully discharged. Recharge the battery.</p>
Battery life differs from the Manual.	<ul style="list-style-type: none">■ The battery life shortens slowly over time as it is a consumable item.■ Product life may be shortened when left for extended periods in low or high temperatures.

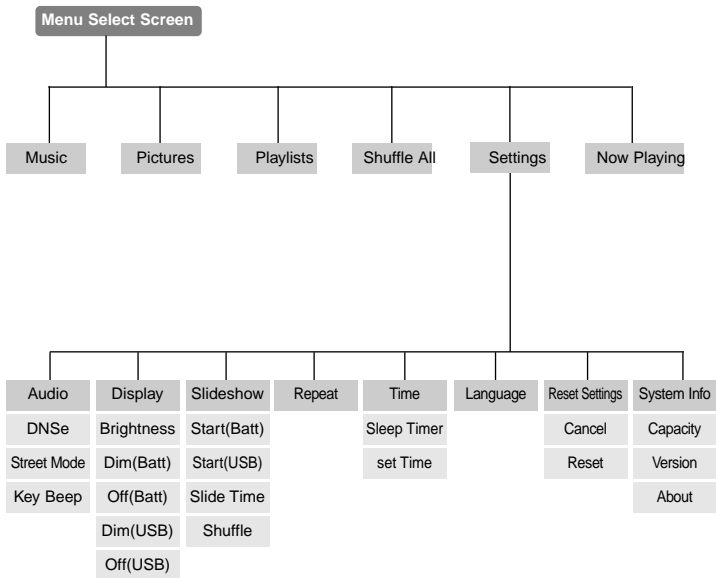
Troubleshooting (Continued)

Problem	Check points & Troubleshooting
Playing is disabled.	<ul style="list-style-type: none">■ Check if the available file has been saved in the memory.■ Check if the music file is damaged.■ Check if there is enough battery power.
File upload is disabled.	<ul style="list-style-type: none">■ Check if the USB cable is securely connected. Reconnect if necessary.■ Check if the memory is full.■ Press the Reset button.
Files or Data are Missing.	Check if the USB cable has been disconnected during file or data transmission. If this is the case, it may cause serious damage not only to files/data but also to the product. You have to be extra cautious as Samsung is not held responsible for data loss.
Abnormal Play Time Display during Play.	Check if the file is in VBR (Variable Bit Rate) format.
Abnormal Display of File Name.	Move to <Settings> → <Language> in the Menu screen and set an appropriate language.

Problem	Check points & Troubleshooting
Program Malfunction	Please check if the PC requirements are met.
Connection to a PC is disabled.	Press <Start> on the toolbar of your PC to run Windows Update. Select Key Updates and Service Packs, then update all. Reboot the PC and reconnect.
The product is hot.	Heat may be generated during recharging. This has no effect on the product life or functions.

Menu Tree

You can quickly view the menu structure.



Product Specifications

Model Name		YP-Z5
Power		3.7V (Li-Polymer Rechargeable)
Built-in Battery Power		820 mAh
File	Compatibility	AUDIO: MPEG1/2/2.5 Layer3(8kbps~320kbps, 8kHz~48kHz), MPEG1 Layer2(32kbps~384kbps, 32kHz, 44.1kHz, 48kHz), WMA(8kbps~192kbps,8kHz~44.1kHz) IMAGE: JPEG(ISO/IEC 10918-1/Annex F-Sequential DCT-based mode of operation)
Earphone Output		20 mW (16)
Output Frequency Range		20Hz~20KHz
Noise Ratio		92 dB with 20kHz LPF(based on 1KHz 0 dB)
Play Time		35 hours of music play (LCD Off, Volume 27)
File Transmission Speed		Max 40 Mbps
Temperature Range for Operation		5~35 °C (23~95°F)
Case		Aluminum
Weight		1.98 oz (inc. battery)
Dimension (WxHxD)		2GB : 1.66 X 3.54 X 0.45 inches 4GB : 1.66 X 3.54 X 0.48 inches

- The contents of this Manual are subject to change without prior notice for further improvement.

License

The product unit accompanying this user manual is licensed under certain intellectual property rights of certain third parties. In particular, this product is licensed under the following US patents : 5,991,715, 5,740,317, 4,972,484, 5,214,678, 5,323,396, 5,539,829, 5,606,618, 5,530,655, 5,777,992, 6,289,308, 5,610,985, 5,481,643, 5,544,247, 5,960,037, 6,023,490, 5,878,080, and under US Published Patent Application No. 2001-44713-A1.

This license is limited to private non-commercial use by end-user consumers for licensed contents. No rights are granted for commercial use. The license does not cover any product unit other than this product unit and the license does not extend to any unlicensed product unit or process conforming to ISO/IEC 11172-3 or ISO/IEC 13818-3 used or sold in combination with this product unit. The license only covers the use of this product unit to encode and/or decode audio files conforming to the ISO/IEC 11172-3 or ISO/IEC 13818-3. No rights are granted under this license for product features or functions that do not conform to the ISO/IEC 11172-3 or ISO/IEC 13818-3.

User Interface by Ivector, Inc.
Copyright (C) 2006, All rights reserved.





Memo

Lined area for writing, consisting of a solid top line and 18 horizontal dotted lines.

Safety Information

FCC

This device complies with part 15 of the FCC Rules. Operation is subject to the following two conditions:

(1) This device may not cause harmful interference, and (2) this device must accept any interference received, including interference that may cause undesired operation.

Caution: Any changes or modifications in construction of this device which are not expressly approved by the party responsible for compliance could void the user's authority to operate the equipment

Note: This equipment has been tested and found to comply with the limits for a Class B digital device, pursuant to part 15 of the FCC Rules. These limits are designed to provide reasonable protection against harmful interference in a residential installation. This equipment generates, uses and can radiate radio frequency energy and, if not installed and used in accordance with the instructions, may cause harmful interference to radio communications. However, there is no guarantee that interference will not occur in a particular installation.

If this equipment does cause harmful interference to radio or television reception, which can be determined by turning the equipment off and on, the user is encouraged to try to correct the interference by one or more of the following measures:

- ◆ Reorient or relocate the receiving antenna.
- ◆ Increase the separation between the equipment and receiver.
- ◆ Connect the equipment to an outlet on a circuit different from that to which the receiver is connected.
- ◆ Consult the dealer or an experienced radio/TV technician for help.

FCC

Any changes or modifications not expressly approved by the grantee of this device could void the user's authority to operate the device.

Compliance

This product conforms to the following Council Directive:

- ◆ Directive 89/336/EEC, 92/31/EEC(EMC)

Declaration of Conformity

Name: Samsung Electronics Co., Ltd
Address: 416, Maetan-3Dong, Paldal-Gu, Suwon City, Kyungki-Do, Korea 442-742
declares under its sole responsibility that the product
Trade Name: Samsung Electronics Co., Ltd
Model Number: YP-Z5
has been tested according to the FCC/CISPR22/95 requirements for Class B devices and found compliant with the following standards

EMI/EMC: AnSI C63.4 1992, FCC Part 15 Subpart B

This device complies with part 15 of the FCC Rules.

Operation is subject to the following two conditions:

- 1.This device may not cause harmful interference, and
- 2.This device must accept any interference received, including interference that may cause undesirable operation.

Party Responsible for Product Compliance

Samsung Electronics America
QA Lab.
3351 Michelson Dr. Suite #290
Irvine, CA92612

Warranty

Samsung warrants this product as free of defects in material, design and workmanship for a period of twelve(12) months from the original date of purchase.

If during the period of warranty this product proves defective under normal use and service, you should return the product to the retailer from whom it was originally purchased. The liability of Samsung and its appointed maintenance company is limited to the cost of repair and/or replacement of the unit under warranty.

Return of the product for defective reasons should be to the original purchaser; however, Samsung Authorized Dealers and Authorized Service Centers will comply with the warranty on the terms issued to purchasers in the country concerned. For further information relating to the Authorized Service Centers contact:

1-800-SAMSUNG (1-800-726-7864)

www.samsung.com

WARRANTY CONDITIONS:

1.The warranty is only valid when the warranty card is properly completed, and upon presentation of the proof of purchase consisting of original invoice or sales slip confirmation, indicating the date of purchase, dealer's name, model, serial No. and product number.

Samsung reserves the right to refuse warranty service if this information has been removed or changed after the original purchase of the product from the dealer.

2.Samsung's obligations are to the repair of the defective part, and at its discretion, replacement of the product (service exchange unit).

3.Warranty repairs must be carried out by an Authorized Samsung Dealer/Service Center. No reimbursement will be made for repairs carried out by non Samsung Centers, and warranty coverage will not be valid for any repairs or damage caused by such repairs.

4.Repair or replacement under the terms of this warranty does not give right to extension to or a new starting of the period of warranty. Repair or direct replacement under the terms of this warranty may be fulfilled with functionally equivalent service exchange units.

5. The warranty is not applicable in cases other than defects in material, design and workmanship. The warranty does not cover the following:

- ◆ Periodic checks, maintenance, repair and replacement of parts due to normal wear and tear.
- ◆ Abuse or misuse, including but not solely limited to the failure to use this product for its normal purpose or in accordance with Samsung's instructions usage and maintenance.
- ◆ Use of the product in conjunction with accessories not approved by Samsung for use with this product.
- ◆ Failure of the product arising from incorrect installation or use not consistent with technical or safety standards in current force, or failure to comply with product manual instructions.
- ◆ Accidents, Acts of God or any cause beyond the control of Samsung caused by lightning, water, fire, public disturbances and improper ventilation.

◆ Unauthorized modifications carried out for the product to comply with local or national technical standards in countries for which the Samsung product was not originally designed.

◆ Repairs performed by non-authorized service centers such as opening of the product by a non-authorized person.

◆ The model, serial No. and product number on the product has been altered, deleted, removed or made illegible.

6. This warranty does not affect the consumer's statutory rights nor the consumer's rights against the dealer from their purchase/sales agreement.

Warranty

THERE ARE NO EXPRESS WARRANTIES OTHER THAN THOSE LISTED AND DESCRIBED ABOVE, AND NO WARRANTIES WHETHER EXPRESS OR IMPLIED, INCLUDING, BUT NOT LIMITED TO, ANY IMPLIED WARRANTIES OF MERCHANTABILITY OR FITNESS FOR A PARTICULAR PURPOSE, SHALL APPLY AFTER THE EXPRESS WARRANTY PERIODS STATED ABOVE, AND NO OTHER EXPRESS WARRANTY OR GUARANTY GIVEN BY ANY PERSON, FIRM OR CORPORATION WITH RESPECT TO THIS PRODUCT SHALL BE BINDING ON SAMSUNG, SAMSUNG SHALL NOT BE LIABLE FOR LOSS OF REVENUE OR PROFITS, FAILURE TO REALIZE SAVINGS OR OTHER BENEFITS, OR ANY OTHER SPECIAL, INCIDENTAL OR CONSEQUENTIAL DAMAGES CAUSED BY THE USE, MISUSE OR INABILITY TO USE THIS PRODUCT, REGARDLESS OF THE LEGAL THEORY ON WHICH THE CLAIM IS BASED, AND EVEN IF SAMSUNG HAS BEEN ADVISED OF THE POSSIBILITY OF SUCH DAMAGES. NOR SHALL RECOVERY OF ANY KIND AGAINST SAMSUNG BE GREATER IN AMOUNT THAN THE PURCHASE PRICE OF THE PRODUCT SOLD BY SAMSUNG AND CAUSING THE ALLEGED DAMAGE. WITHOUT LIMITING THE FOREGOING, PURCHASER

ASSUMES ALL RISK AND LIABILITY FOR LOSS, DAMAGE OR INJURY TO PURCHASER AND PURCHASER'S PROPERTY AND TO OTHERS AND THEIR PROPERTY ARISING OUT OF THE USE, MISUSE OR INABILITY TO USE THIS PRODUCT SOLD BY SAMSUNG NOT CAUSED DIRECTLY BY THE NEGLIGENCE OF SAMSUNG. THIS LIMITED WARRANTY SHALL NOT EXTEND TO ANYONE OTHER THAN THE ORIGINAL PURCHASER OF THIS PRODUCT, IS NONTRANSFERABLE AND STATES YOUR EXCLUSIVE REMEDY.

Some states do not allow limitations on how long an implied warranty lasts, or the exclusion or limitation of incidental or consequential damages, so the above limitations or exclusions may not apply to you. This warranty gives you specific legal rights, and you may also have other rights which vary from state to state. This product is for personal use only, and is only for use in compliance with the limitations of copyright and other laws. To obtain warranty service, please contact SAMSUNG at: Samsung Electronics America, Inc. 400 Valley Road, Suite 201 Mount Arlington, NJ 07856
1-800-SAMSUNG (1-800-726-7864) www.samsung.com
081299

**If you have any questions or comments relating to Samsung products,
please contact the SAMSUNG customer care center.**

**Samsung Electronics America, Inc.
1-800-SAMSUNG (7267864)
www.samsung.com**

Free Manuals Download Website

<http://myh66.com>

<http://usermanuals.us>

<http://www.somanuals.com>

<http://www.4manuals.cc>

<http://www.manual-lib.com>

<http://www.404manual.com>

<http://www.luxmanual.com>

<http://aubethermostatmanual.com>

Golf course search by state

<http://golfingnear.com>

Email search by domain

<http://emailbydomain.com>

Auto manuals search

<http://auto.somanuals.com>

TV manuals search

<http://tv.somanuals.com>