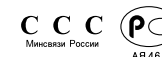


900 MHz Phone



*WIDE Phone* SP-C700R



GG68-00405E  
03/10. Rev.1.0

English Manual

# Safety Precautions

The following is to ensure the user's safety and to minimize potential damages. Carefully read the following guidelines and use in accordance with the instructions.



Warning

When you see this sign, it indicates a warning that something can cause death or serious injury.



Note

When you see this sign, it indicates a warning that something can cause minor injury or product damage.



Warning

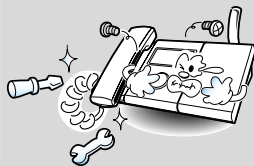
Do not use damaged power lines or loose plugs.

- It can cause electric shock or fire.



Do not disassemble or repair.

- It can cause electric shock, fire or injury.
- If it needs repairing, please contact our local service center.



If there is dust or water on the power plug, wipe it off with a dry cloth.

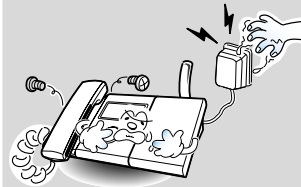
- Do not use water, as it can cause electric shock or fire.



Note

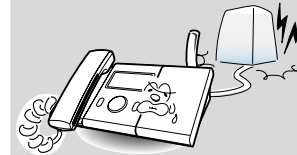
Never pull out the power plug by pulling the line or when your hands are wet.

- It can cause electric shock or fire.



Do not fold the power line or leave it under heavy objects.

- It can cause electric shock or fire.



This product is for 220V only. Do not use for any other voltages.

- It can cause electric shock or fire.



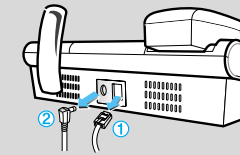
Use only the designated adapter.

- It can cause fire.



Always disconnect the Phone Jack ① first before disconnecting the DC Power Jack ② of the adapter from the phone.

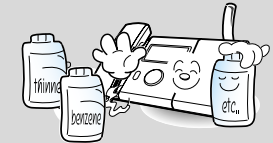
- It can electric shock.



Always disconnect from the power supply when cleaning.

Do not spray water and do not use benzene, thinner or any other alcohol while cleaning the phone.

- It can cause electric shock or fire.



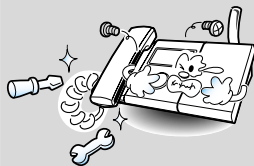
Do not use damaged power lines or loose plugs.

- It can cause electric shock or fire.



Do not disassemble or repair.

- It can cause electric shock, fire or injury.
- If it needs repairing, please contact our local service center.



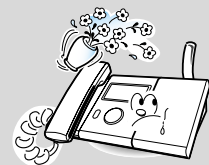
If there is dust or water on the power plug, wipe it off with a dry cloth.

- Do not use water, as it can cause electric shock or fire.



Do not pour water or any liquid on the phone.

- It can cause electric shock or fire.



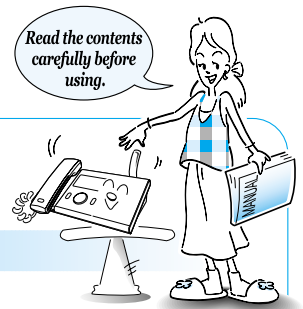
If you hear any weird or unusual noises or smell anything weird, immediately disconnect the power line and call the service center.

- It can cause electric shock or fire.

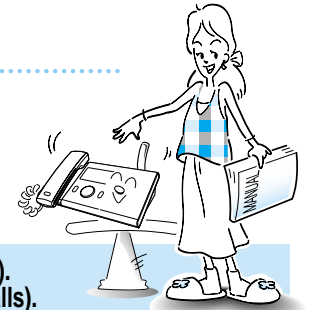
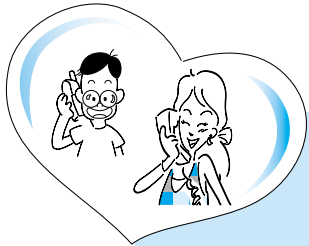


Do not dispose batteries into a fire.

- It can cause an explosion.



# Overview of Major Features



## WIDE 900 MHz Phone

- Here are some instructions concerning various functions of the phone.

Base set : Phone directory (20 phone numbers), recent calls (10 calls).  
 Remote set : Phone directory (10 phone numbers), recent calls (10 calls).  
 The phone directory is saved separately from the recent call function and the base set and the remote set are controlled separately.

### Base Set

page 28

#### Recent call function

You can easily search and redial the most recent numbers you called without dialing them up again.  
 (Up to 10 calls)

page 22

#### Morning call/alarm function

This button will set an alarm to sound at a certain time.

#### Setting function

You can set and manage your own settings for various phone functions.

page 17, 19

#### Intercom function

You can easily switch between an internal call (intercom) with the base set and an external call.

page 23-26

#### Phone directory search function

This helps you store or search up to 20 phone numbers.

#### On Hook Dialing

You can make a call without picking up the remote set.

### Remote Set

An illuminated dial pad adds to your convenience. It allows you to dial phone numbers even in dark places.

You can easily carry the remote set when moving around.

page 23-26

#### Phone directory search function

This helps you store or search up to 10 phone numbers.

page 17-19

#### Intercom function

You can easily switch between an internal call (intercom) with the base set and an external call.

page 28

#### Recent call function

You can easily search and redial the recent numbers you called without dialing them up again. (Up to 10 calls)

page 31

#### Noise reduction function

It will detect a clear channel when the call has a bad connection

#### Setting function

You can manage settings for various phone functions.

# Table of Contents



## Preparation & Installation

Safety precautions	1
Overview of major features	3
Table of contents / Components	5
Product information	7
Phone installation	9

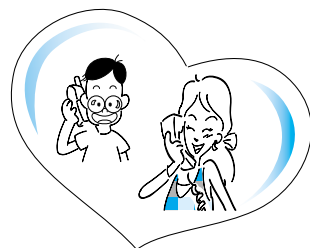
## Basic Features

Making calls	13
Answering calls	14
Date / Time setting	15
Using the intercom function	17
Transferring calls	18
Changing the ringing melody and adjusting the voice volume	20
Morning call / alarm setting	22
Using the phone directory	23

## Convenient features

### Convenient features for making calls

Redialing the recently dialed number	28
Deleting the recently dialed number	28
Blocking a user from making long distance calls	29
Dialing another number after a call (Flash)	29
Pause function	30



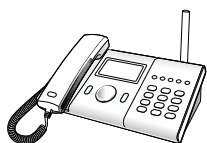
### Help functions

Selecting Pulse / Tone Dial Type	30
Noise reduction	31
Out of range warning	31
Low voltage warning	31
Adjusting the Flash Time	31
Initializing the phone	32
Registering the remote set	33

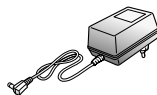
## Reference

Troubleshooting	35
How to Clean	37
Product Specifications	38

## Components



Base set



Base adapter  
(DC 12V 500mA)



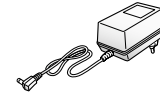
Phone line cord



Remote set



Charger



Charger Adapter  
(DC 12V 500mA)



Battery  
(DC 3.6V 450mAh)



User's manual

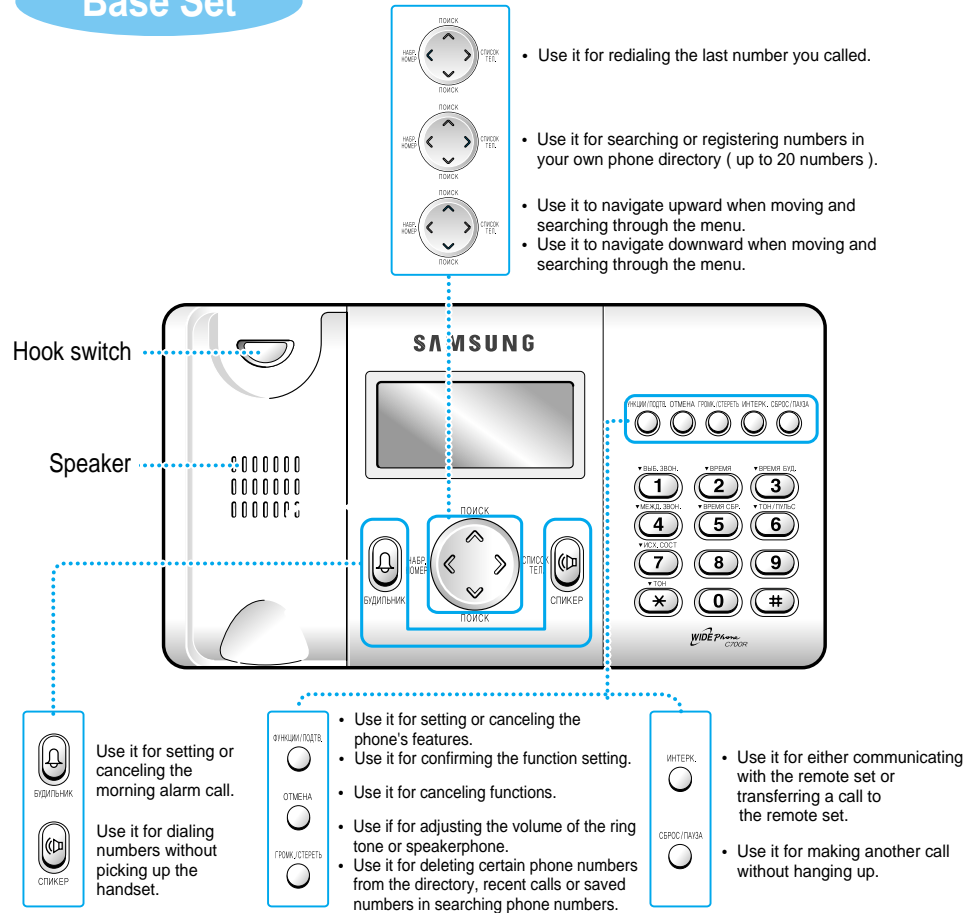


Warranty card

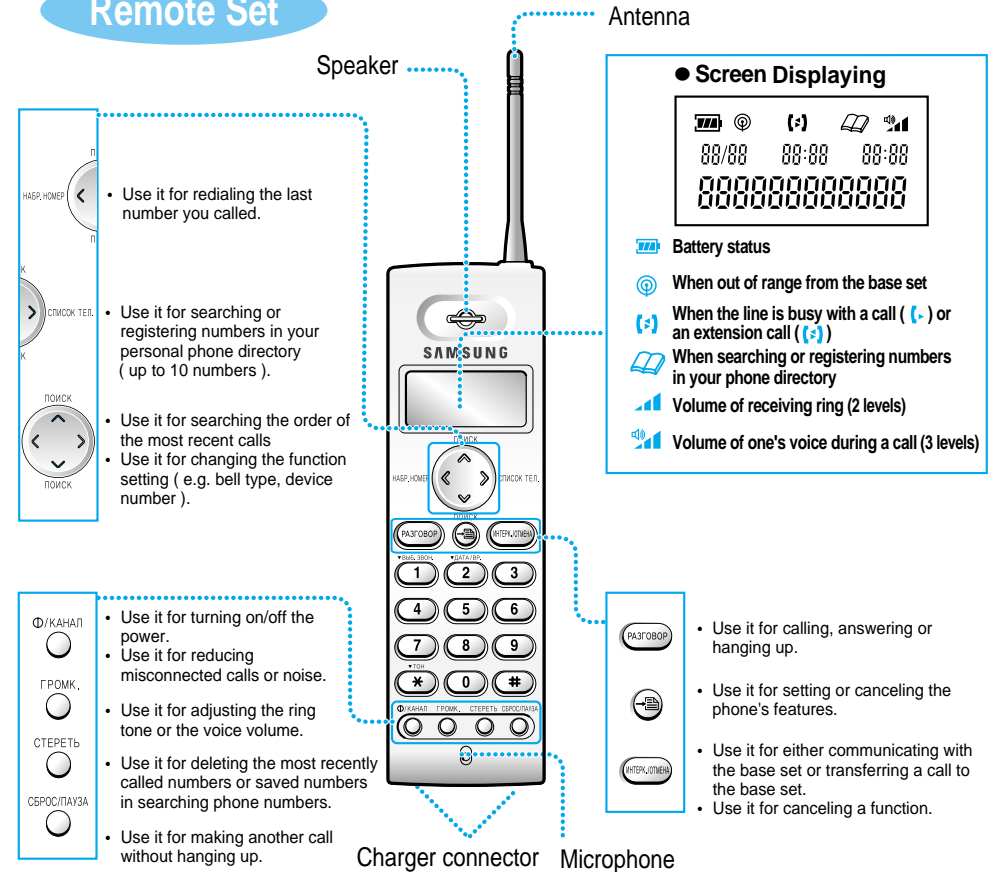
- Please check the components.
- In case there is a problem with the components, please contact a retail shop where you made your purchase.

# Product Introduction

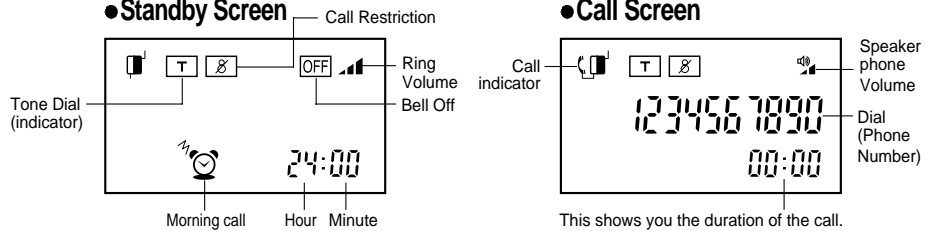
## Base Set



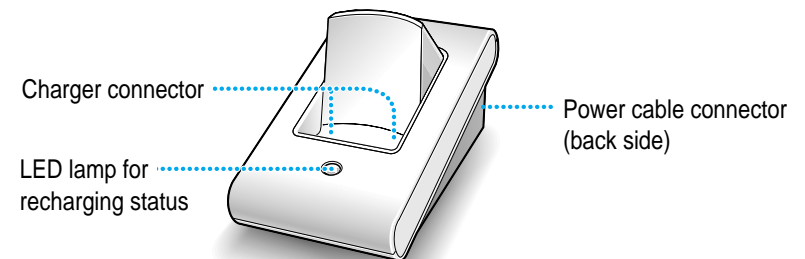
## Remote Set



### • Standby Screen



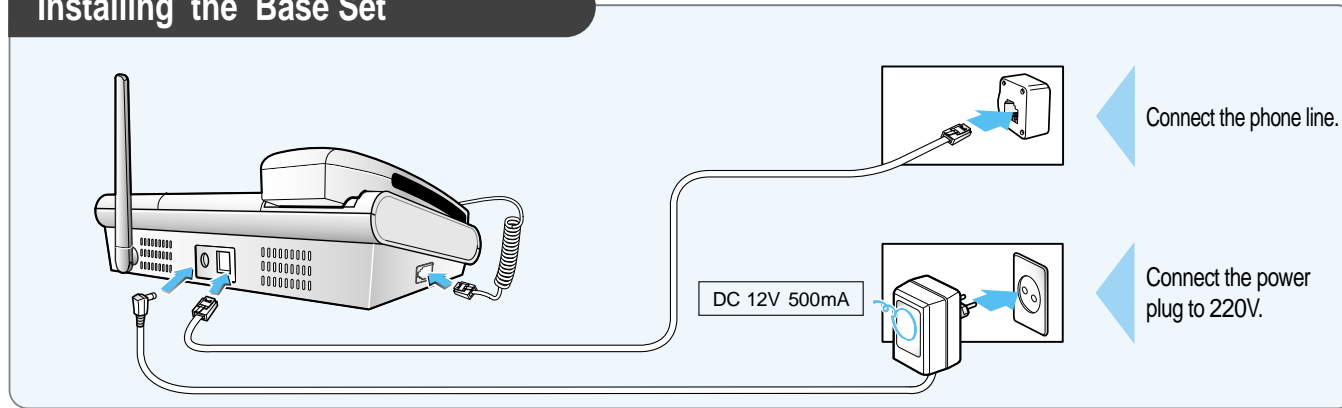
## Charger



# Phone Installation

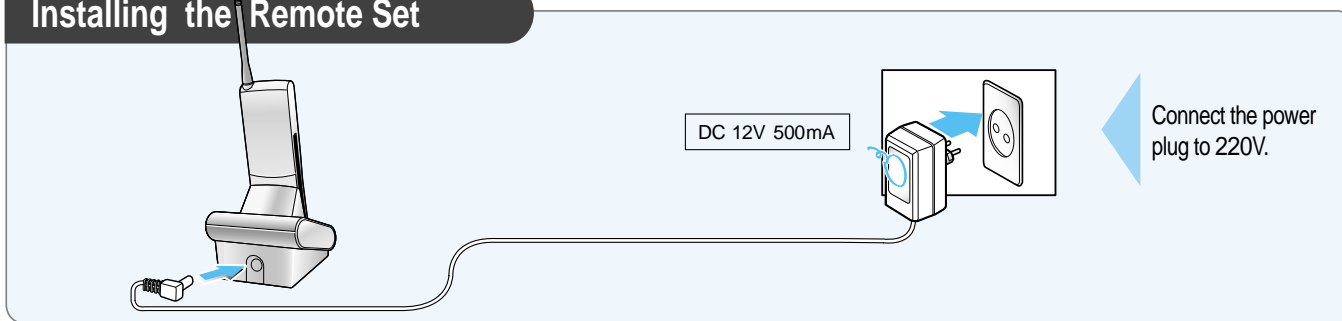


## Installing the Base Set



- When you have finished installing the base set, press "On Hook" button and check for a dial tone.
- If you cannot hear a dial tone, then check both the power and phone line connections.
- This product works for 220V.

## Installing the Remote Set



- Place the remote set on the charger and check if the lamplight is on.
- Press the call button and check for a dial tone.
- If you cannot hear the tone, check the installation.

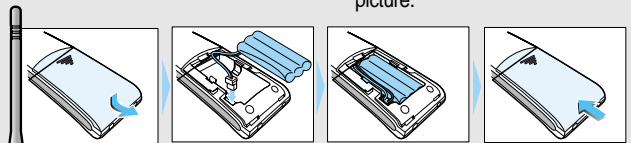
### To turn on / off the power



- To turn on the power: Press button (hold for more than 2 seconds) until you begin to hear the beeping sound.
- If it does not turn on when you press button, then you probably need to recharge the remote set. It should then automatically turn on. Please recharge the battery for 24 hours before using it.
- If you do not charge the battery for at least 6 hours, then in order to protect it, the battery must be fully charged or it will stop operating.
- To turn off the power: Press buttons (hold for more than 3 seconds) until you hear the beeping sound.

### Loading the battery to the remote set

- 1 Open the battery cover.
- 2 Place the battery as shown in the picture.
- 3 Rearrange the line by setting the battery as shown in the picture.
- 4 Close the battery cover.



### How to use the battery

- Charge the battery for approximately 24 hours before using.
- Always remove the battery from the remote set, when you are not using it for an extended period.
- It is best to charge the battery until you see the ( ) sign on the screen.



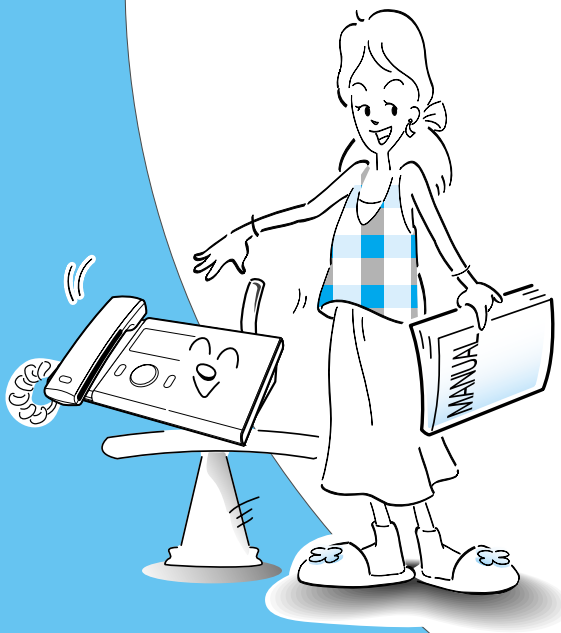
### Battery life



- The battery life has a 6-month warranty after purchase.
- As time goes by, there will be a reduction in the battery's power. When battery's power capacity is reduced by half, purchase a new battery and replace it.
- Please contact your local Samsung Electronics Service Center on how to purchase and replace the battery.

# Basic Features

- Making calls ————— 13
- Answering calls ————— 14
- Date / Time setting ————— 15
- Using the intercom function ————— 17
- Transferring calls ————— 18
- Changing the ringing melody and  
adjusting the voice volume ————— 20
- Morning call / alarm setting ————— 22
- Using the phone directory ————— 23



# Making Calls

## Making a Call with the Base Set

**When using the base-handset**

Pick up the base-handset and dial the number you want to call.

**When using the On Hook**

Press **СТІКЕР** button and dial the number you want to call.

**When hanging up the phone**

Place the handset down on its position.

**When calling in standby mode**

You can get a dial tone in 3 seconds.

- You can switch from pulse to tone mode by pressing **\*TОН** button during dialing.
- If you have incorrectly dialed the number in standby mode, you can delete a digit by pressing **ПРОМ\_СТЕРЕТЬ** button and then pick up the handset or press 'On Hook' button.

### What is "On Hook Dialing"?

- ➔ It is a very convenient feature. With it, you can first dial the number you want to call and then pick up the handset to talk to the caller after identifying his/her voice through the speaker. (NB. If you don't pick up the handset, the other side can't hear you.)

## Making a Call with the Remote Set

**When the remote set is placed on the Charger**

Pull out the remote set from the charger, press **РАБОТОП** button and dial the number you want to call.

**When the remote set is not placed on the Charger**

Press **РАБОТОП** button and dial the number you want to call.

**When hanging up the phone**

Place the remote set on the charger or pressing **РАБОТОП** button.

- You can switch from pulse to tone mode by pressing **\*TОН** button during dialing.
- You can dial the number before pressing **РАБОТОП** button.
- If you have incorrectly dialed the number in standby mode, you can delete a digit by pressing **СТЕРЕТЬ** button and then press **РАБОТОП** button.

# Answering Calls

## Answering a Call with the Base Set

**When the Phone Rings**

Pick up the handset to answer the call.

## Answering a Call with the Remote Set

**When the Phone Rings**

**When the remote set is placed on the charger**

Pull out the remote set from the charger and press **РАБОТОП** button to answer the call.

**When the remote set is not placed on the charger**

press **РАБОТОП** button to answer the call.



# Date/Time Setting

- You need to setup the Date/Time feature in order to see the current time and to use the Morning Call/Alarm function.
- Only the hour and minute setting is available on the base set.

## Setting up the Base Set

1

ФУНКЦИИ/ПОДТВ.


2

▼ВРЕМЯ

2

3

Displaying



4

▼ВРЕЯ, ЗВОН	▼ВРЕМЯ	▼ВРЕМЯ ENL.
1	2	3
▼МЕНЮ, ЗВОН	▼ВРЕМЯ ENL.	▼ПОИСК
4	5	6
▼МЕНЮ, ЗВОН	▼ВРЕМЯ ENL.	▼ПОИСК
7	8	9
▼ТОН	0	#

• Press 4 digits in the order of hour, and minute.

5

ФУНКЦИИ/ПОДТВ.

You will hear a beep confirming the completion of the setting.

## Setting up with the Remote Set

1


2

▼ДАТА/ВР.

2

3

Displaying



4

▼ВРЕЯ, ЗВОН	▼ДАТА/ВР.	
1	2	3
4	5	6
7	8	9
▼ТОН	0	#

• Press 8 digits in the order of day, month, hour, and minute.

5




You will hear a beep confirming the completion of the setting.


**Note** In the case of a power failure or if you have deliberately disconnected the power, the date and time will be erased. Therefore you will have to set it up once again.

# Using the Intercom Function


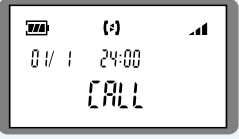
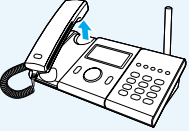
- Separating from external calls, you can use intercom function between the base set and the remote set. In this particular case the calls are not charged.



Calling from  to 

1	2	3	4	
Base Set			Remote set	
ИНТЕРК. 		When you hear it ringing	ИНТЕРКОММЕНА OR РАБОБОП	When the internal call is connected, pick up the handset to talk.


- In order to cancel the intercom during any call, simply press  button, or lift up the handset and place it back on the hook.

Calling from  to 

1	2	3	
Remote set	Displaying of the Internal call	Base Set	
			When you are connected through to the person, talk on the phone.
		• When you hear it ringing, pick up the handset.	

- In order to cancel the intercom during any call, simply press  or  button, or place the remote set on the charger.


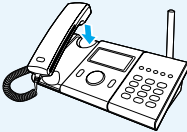



**Note**

- When an external call comes during an intercom talk,  
To answer by the base set → Press  button on the remote set to hang up the call  
To answer by the remote set → simply place the handset of the base set on its cradle to transfer the call.

# Transferring Calls

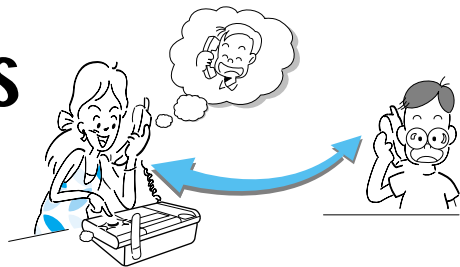
- While talking you can transfer the call either to the base set or to the remote set.

How to transfer from  to 



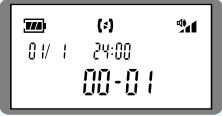
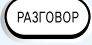

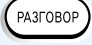
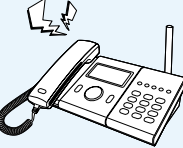
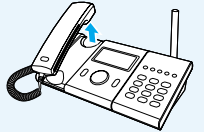
1			
	Base Set	While talking	
2	3	4	
			
Place the handset on the hook to hang up the call.	When you hear it ringing	Pick up the remote set and press  button to talk on the phone.	

- To cancel the transferring, simply pick up the handset.

# Transferring Calls (continued)



Transferring from  to 

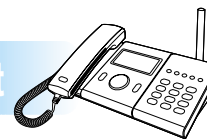
 <p>Remote Set While talking</p>	<p>1 Remote set</p> <p></p>	<p>2</p> <ul style="list-style-type: none"> <li>Transferring from the remote set to the base set</li> </ul> 
<p>3</p> <p>or </p>  <p>Place the remote set on the charger or press  button to hang up.</p>	<p>4</p>  <p>When the phone rings</p>	<p>5</p>  <p>Pick up the handset.</p>

**Note** • To cancel the transferring, simply press  button.

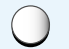

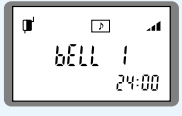

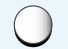
# Changing the Ringing Melody and Adjusting the Voice Volume

• You can adjust the type and volume of ring tone melodies as you please.

## Base Set



## Selecting the Ringing Melody

<p>1</p> <p>ФУНКЦИИ/ПОДТВ.</p> <p></p>	<p>2</p> <p>▼ ВЫБ. ЗВОН.</p> <p></p>	<p>3</p> <p>Displaying</p>  <ul style="list-style-type: none"> <li>The current melody will ring and the number of the melody will be displayed.</li> </ul>	<p>4</p> <p>ПОИСК</p> <p>НАЕР. НОМЕР</p>  <p>СПИСОК ТЕМ.</p> <p>ПОИСК</p> <ul style="list-style-type: none"> <li>(Up to 10 available)</li> </ul>	<p>5</p> <p>ФУНКЦИИ/ПОДТВ.</p> <p></p> <p>You will hear a beep confirming the completion of the setting.</p>
---	---	---	---	---


**Note** • "bELL OFF" – Silence.


## Adjusting the Ring Volume

- You can adjust the volume to 3 levels (High/Medium/Low).
- The default setting is medium.

**Stand by**

ГРОМК./СТЕРЕТЬ




Press  button one after another.

- In doing so, you can switch the volume to high, medium or low.


## Adjusting Speaker / Voice Volume


- The volume can be adjusted by 2 levels, Low and High.
- The original setting is Low.

**Speaker Volume**

After pressing the  button

ГРОМК./СТЕРЕТЬ



Press  button one after another.

**Voice Volume**

While talking into the handset.

- In doing so, you can switch the volume to high, or low.

# Changing the Ringing Melody and Adjusting the Voice Volume (continued)

## Remote Set



### Selecting the Ringing Melody

1	2	3	4	5	<p>You will hear a beep confirming the completion of the setting.</p>
	▼ ВЫБ. ЗВОН. 1	<p>Displaying</p>	<p>ПОИСК</p> <p>НАЗВ. ПОИСК. ТЕЛ. ПОИСК</p> <ul style="list-style-type: none"> <li>Press the search button and select the ringing melodies that you want (Up to 10 available)</li> <li>You can select by pressing <b>1</b> button one after another.</li> </ul>		

**Note** • "BELL OFF" – Silence.

### Adjusting the Ring Volume

- The volume can be adjusted by 2 levels, Low and High.
- The original setting is High.

**Stand by** →

ГРОМК.

Press button one after another.

- In doing so, you can switch the volume to high, or low.

### Adjusting the Voice Volume

- You can adjust the volume to 3 levels (High/Medium/Low).
- The original setting is Medium.

**During a call** After pressing button →

ГРОМК.

Press button one after another.

- In doing so, you can switch the volume to high, medium or low.

# Morning Call/Alarm Setting

- First, set the current time (see page 15 for more details)
- You can only setup the morning call/alarm on the base set.
- When you set the morning call/alarm, it will give you a wakeup call at a certain time.



### Setting the Time on the Base Set

1	2	3	4	5	<p>You will hear a beep confirming the completion of the setting.</p>
ФУНКЦИИ/ПОДТВ.	▼ ВРЕМЯ БУД. 3	<p>Displaying</p>	<p>Time Setting</p> <ul style="list-style-type: none"> <li>Press four digits in the order to set up hours and minutes.</li> </ul>	ФУНКЦИИ/ПОДТВ.	

**Note** • When you set the Morning call/alarm, it will automatically be enabled.



### Wait!

- When you set up your wakeup time, the morning call/alarm is enabled. It will ring for up to 10 minutes.
- When the morning call/alarm is ringing, if you want to turn it off, simply press any button on the base set or lift up and then put down the handset back on to the cradle. Or press the call button on the remote set.

### Setting or Canceling the Morning Call /Alarm

- When you cancel and reset the morning call/alarm, the time that was last set beforehand will be effective.

**Будильник**

In standby mode, you can toggle between setting and canceling using button. When it is active, the screen of the phone displays an icon.

When the Morning call/alarm is enabled

# Using the Phone Directory

- You can register up to 20 phone numbers on the base set.

## Registering a Phone Number (Using the Base Set)

1. Press **ФУНКЦИИ/ПОДТВ.** button.
2. Press **СПИСОК ТЕЛ.** button.
3. Enter the phone number. (You can use up to 20 digits)
4. Press **ФУНКЦИИ/ПОДТВ.** button. You will hear a beep confirming the completion of the setting.

**Note** Using a phone directory with an installed switchboard or an internal phone line. In case of an installed switchboard or an internal phone, you can usually make external calls by using an external switch number (mostly 9). When registering the phone number, enter a pause between the external switch number and the phone number.

**Example** : To register 012-345-6789



## Searching the Phone Directory (Using the Base Set)

1. Press **СПИСОК ТЕЛ.** button.
2. Press **ПОИСК** button to look up any of the numbers that have been previously saved.
3. Displaying the number on the screen.

- When the searching phone number has more than 12 digits, you can use **НАБР. НОМЕР** button to identify the rest of the number that is not displayed.

## Making a Call from the Phone Directory (Using the Base Set)

1. Press **СПИСОК ТЕЛ.** button.
2. Press **ПОИСК** button and select the phone number you want.
3. Press **СПИКЕР** button or pick up the handset.

## Deleting Each of the Numbers in the Phone Directory (Using the Base Set)

1. Press **СПИСОК ТЕЛ.** button.
2. Press **ПОИСК** button and select the phone number you want.
3. Press **ГРОМК./СТЕРЕТЬ** button. The selected phone number has been erased.

## Deleting All of the Numbers in the Phone Directory (Using the Base Set)

1. Press **СПИСОК ТЕЛ.** button.
2. Press **ГРОМК./СТЕРЕТЬ** button and hold for at least 3 seconds.
3. The screen displays "DELETE ALL".
4. Press **ФУНКЦИИ/ПОДТВ.** button. All of the saved phone numbers have been erased.

- To cancel the deleting, simply press **ОТМЕНА** button.

# Using the Phone Directory (continued)

- You can register up to 10 phone numbers in the remote set.

## Registering a Phone Number (Using the Remote Set)

1 Press **>** button.

2 Press **↑** button.

3 Press **↑** button and select the phone number you want.

4 Enter the phone number.  
\*HABP, HOMEP 1 2 3  
\*ПОИСК, ТЕЛ. 4 5 6  
\*ТОЛ 7 8 9  
 \* 0 #  
 (You can use up to 20 digits)

5 You will hear a beep confirming the completion of the setting.

## Searching the Phone Directory (Using the Remote Set)

1 Press **>** button.

2 Press **↑** button to look up any of the numbers that have been saved.

3 Displaying  
 01/1 24:00 01/10  
 1234567890

- When the searching phone number has more than 12 digits, you can use **<** button to identify the rest of the number that is not displayed.

## Making a Call from the Phone Directory (Using the Remote Set)

1 Press **>** button.

2 Press **↑** button and select the phone number you want.

3 **РАЗГОВОР**

## Deleting Each of the Numbers in the Phone Directory (Using the Remote Set)

1 Press **>** button.

2 Press **↑** button and select the phone number you want.

3 **СТЕРЕТЬ**

The selected phone number has been erased.

## Deleting All of the Numbers in the Phone Directory (Using the Remote Set)

1 Press **>** button.

2 Press **○** button and hold for at least 3 seconds.

3 **DELETE ALL**

4 All of the saved phone numbers have been erased.

- To cancel the deleting, simply press **ENTER/OK/ENTER** button.

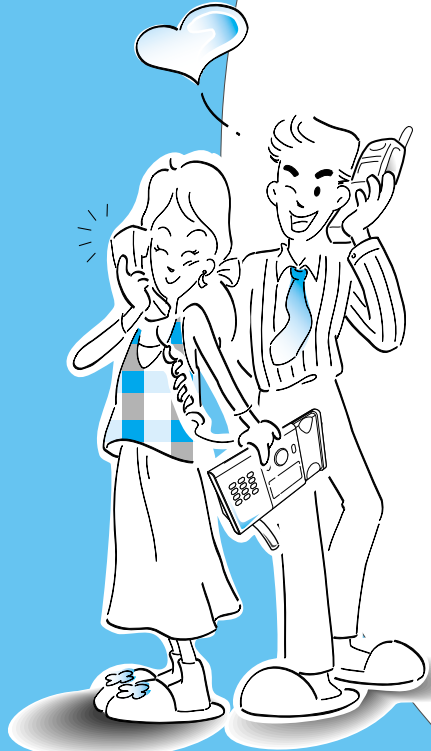
# Convenient Features

## ■ Convenient features for making calls — 28

- Redialing the recently dialed number
- Deleting the recently dialed number
- Blocking a user from making long distance calls
- Dialing another number after a call (Flash)

## ■ Help functions — 30

- Pause function
- Selecting Pulse / Tone Dial Type
- Noise reduction
- Out of range warning
- Low voltage warning
- Adjusting the flash time
- Initializing the phone
- Registering the remote set

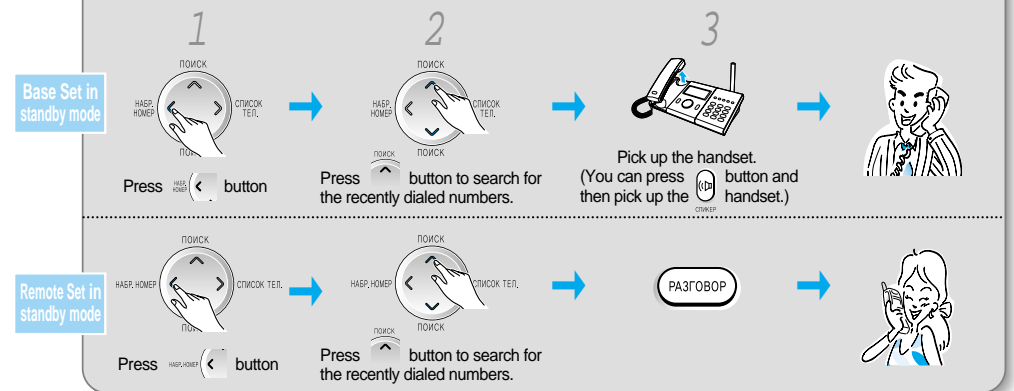


## Convenient Features for Making Calls



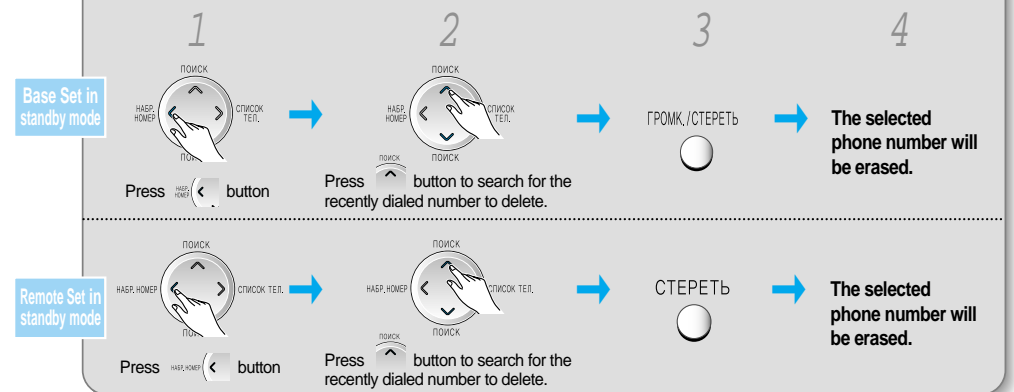
You can call the recently dialed numbers without redialing by yourself.

### To Redial a Number



- The most recent numbers are stored in the memory (up to 10 numbers).
- Press **НАЗД./НОМЕР** button of the base set in stand-by mode and pick up the handset to call the last dialed number.
- Press **НАЗД./НОМЕР** button of the remote set in stand-by mode and press **РАЗГОВОР** button to call the last dialed number.

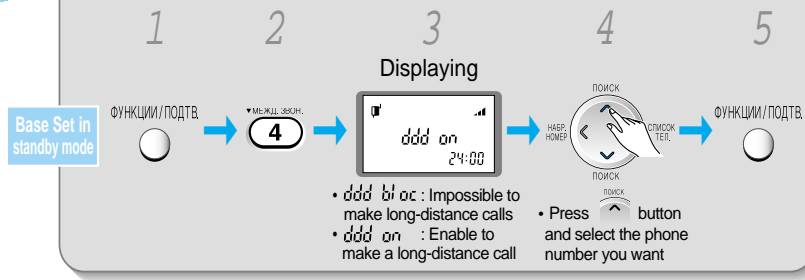
### To Delete the Recently Dialed Number



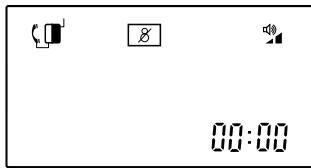
Convenient features



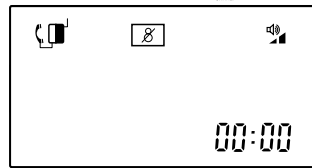
To Block Long Distance Calls (Using the Base Set)



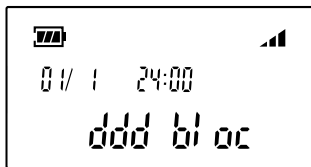
When you pick up the handset



When you press the button



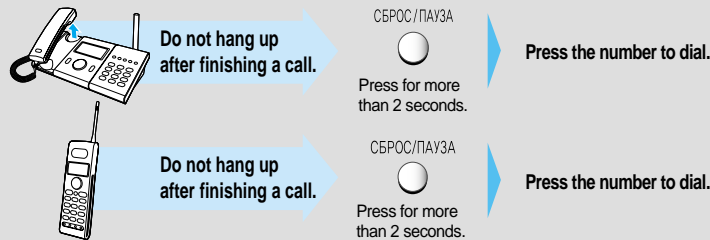
- When the restriction function is enabled, you can make a long distance call with the base set. And you will also see icon on top of the screen.



- When the restriction function is enabled, you can make a (long distance) call with the base set. However, when you dial eight first on the remote set, it will return to standby mode instead of sending a call.

Dialing Another Number after a Call (Using the Base Set/Remote Set) (Flash)

You can make another call without hanging up after a call.

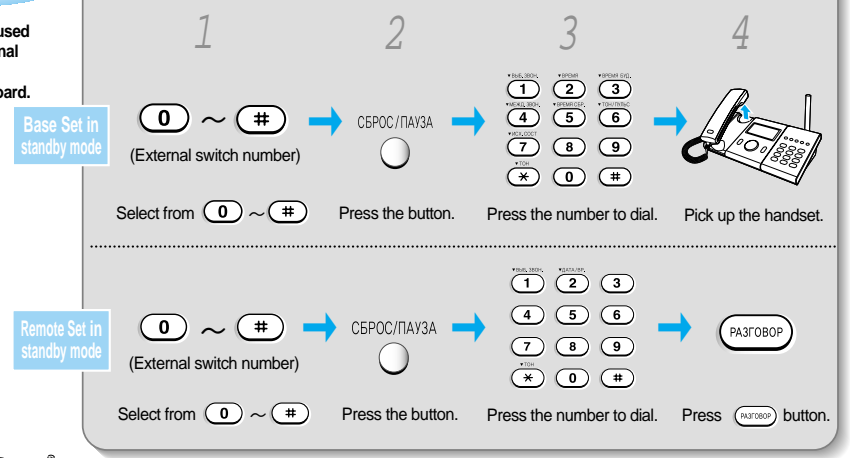


- See page 31 for selecting the flash time.



This function is used for making external calls within the internal switchboard.

Dial Pause (Using the Base Set /Remote Set)

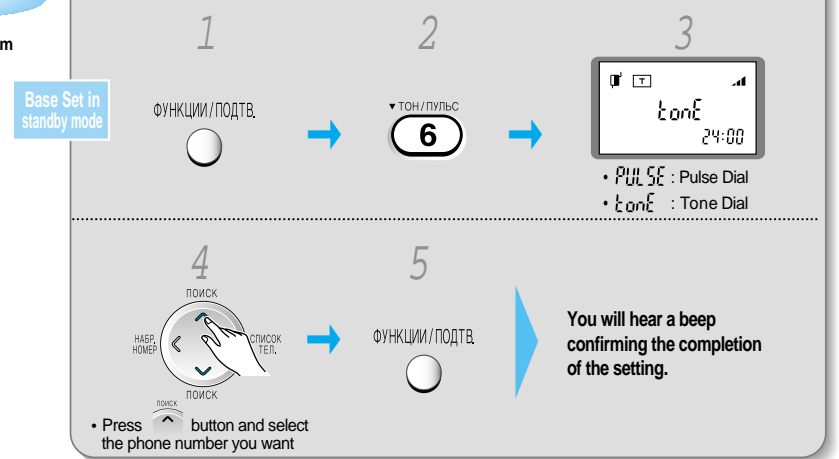


- In case of an installed switchboard or internal phone line, you can make external calls by using an external switch number (mainly 9).



You can select from pulse and tone dial type.

Selecting Pulse/Tone Dial Type (Using the Base Set)



- The pulse dial is originally set. ▼: Pulse Dial, ▲: Tone Dial
- You can change the dial type only from the base set.





When there is a lot of noise, or when the call has a bad connection, you can use this function to reduce irrelevant noise by changing channels.

### Noise Reduction (Using a Remote Set)

1

When there is a lot of noise



2

Ф/КАНАЛ

Press button

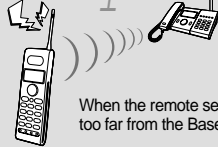
If the noise is not reduced, press the button several times.



This prevents a remote set from being disconnected from the base set.

### Out of Range warning with the Remote Set

1



When the remote set gets too far from the Base set



2

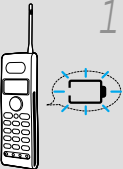
You will see a on the top of the screen with a warning sound. When this occurs, move closer toward the base set.



When the battery voltage of the remote set falls below a certain level, a warning is given.

### Low Voltage Warning in Remote Set

1



When a battery needs recharging



2

You will hear a warning sound with these marks blinking. When this occurs, immediately recharge your remote set.



You can adjust the flash time.

### Adjusting the Flash Time

1

ФУНКЦИИ/ПОДТВ.

2

ВРЕМЯ СВЯЗ.

3

Displaying



4



5

ФУНКЦИИ/ПОДТВ.

You will hear a beep confirming the completion of the setting.

Press button to select the flash time you want.



You can select the range of the flash time from 0.1 to 1.0 seconds.



This is to initialize the phone to its original condition.

### Initializing the Phone (Base Set / Remote Set)

1

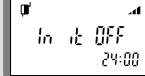
Base Set in standby mode



2



Displaying



• In it ON : Initialization set  
• In it OFF : Initialization cancelled

4



Press button on the top.

5



All functions will be initialized with a completion sound.

Remote Set in standby mode



Press the three buttons at the same time and hold for at least 3 seconds.

All functions will be initialized with a completion sound.

### Default or Initial State of the Phone

#### Base Set

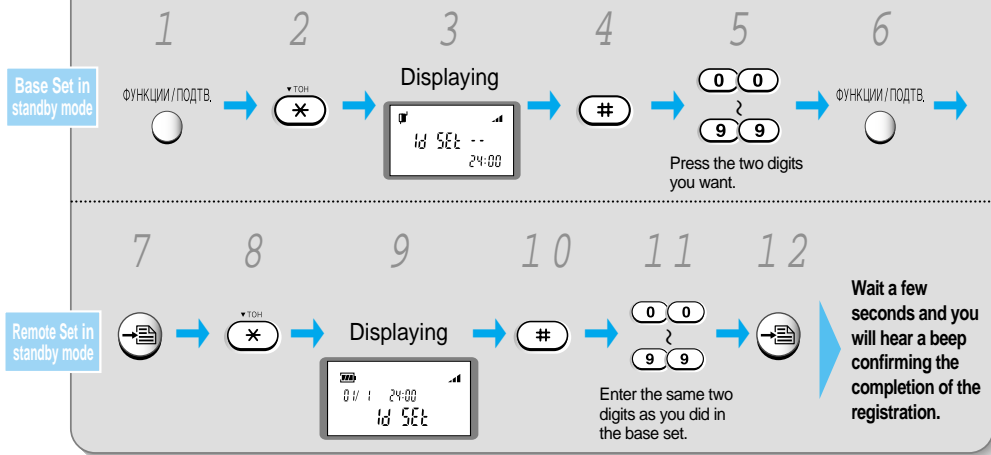
- Ring type : 1
- Call Restriction : Cancel
- Morning call / alarm time : 06:00
- Ring volume : Medium
- Phone volume : Low
- Recently number : None
- Phone directory : None
- Current time : 24:00
- Dial mode : Pulse
- Flash time : 100ms

#### Remote Set

- Ring type : 1
- Ring volume : High
- Phone volume : Medium
- Recently number : None
- Phone directory : None
- Date / Time : 01/ 01 24:00



Registering the Remote Set (Using Base Set / Remote Set)



**Note** When registering the remote set, the number of the base set and the remote set must be identical. In addition, it is recommended that you register the remote set right after registering the base set.

# Reference

- Troubleshooting \_\_\_\_\_ 35
- How to Clean \_\_\_\_\_ 37
- Product Specifications \_\_\_\_\_ 38





## The phone does not work at all.

- Is the phone correctly installed? (Refer to page 9)
- Is the power correctly connected to the appropriate voltage? (Refer to page 9)
- Check if the batteries are correctly inserted to the remote set. (Refer to page 10)
- Check if the batteries are adequately charged. (Refer to page 10)
- Check if the power is on. (Refer to page 9)

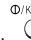
## I cannot hear the tone when I press button.

- Check if the phone is correctly connected. (Refer to page 9)
- Check if the power is correctly connected. (Refer to page 9)


## The morning call/alarm does not work.

- Check if the current time is accurately set. (Refer to page 15)
- Check if the morning call time is set. (Refer to page 22)
- Check if the morning call/alarm function is set. (Refer to page 22)

## I hear many noises while using the remote set.

- Press  button to reduce the noise. (Refer to page 31)
- Check if the distance is too far from the base set. (Refer to page 31)
- Try installing the base set at a different location.

## I hear beeping warning sounds in the remote set.

- Check if the base set is currently in use. Try again after the call in the base set has been hung up.
- Check to see if you are too far away from the base set. If yes, move closer toward the base set. (Refer to page 31)
- If you see the  mark on the screen, hang up the phone and adequately charge your remote set. (Refer to page 31)

## Internal or transferring calls are not working.

- Check if you have installed the phone correctly. (Refer to page 9)
- Try re-registering the remote set to the base set. (Refer to page 33)

## The phone does not ring in the base set or the remote set.

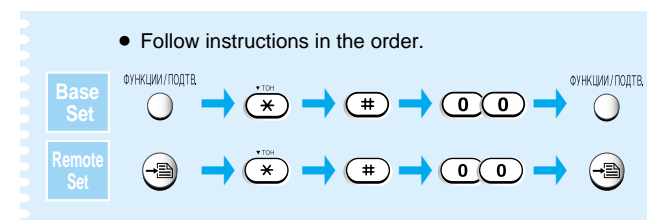
- Check if the batteries are correctly inserted. (Refer to page 10)
- Check if the batteries are adequately charged. (Refer to page 10)
- Check if the power of the remote set is on. (Refer to page 9)
- Try re-registering the remote set to the base set. (Refer to page 33)
- Check if the BELL OFF is selected. (Refer to page 21)

## I cannot recharge the remote set.

- Check if the charging connector is clean.
- If the charging connector is not clean, use a cotton tip or an eraser to wipe it clean. (Refer to page 37)
- Check if the power voltage is appropriate. (Refer to page 9)
- If you have cleaned the charging connector but it still does not work, then please contact your local service center and purchase new batteries. (Refer to page 10)



- When there is a problem with radio communication between the base set and the remote set, do the following, and if it still will not work, then please contact your local Samsung Electronics Service Center.



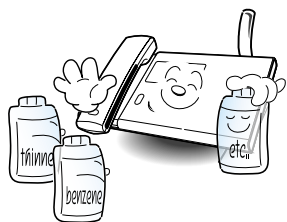
※ See page 33 for registering a remote set

# How to Clean

## When cleaning the outer side of the phone.

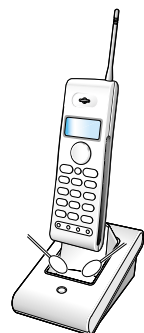
Apply neutral washer liquid and wipe it with a cloth.

- Do not use benzene, thinner, etc.



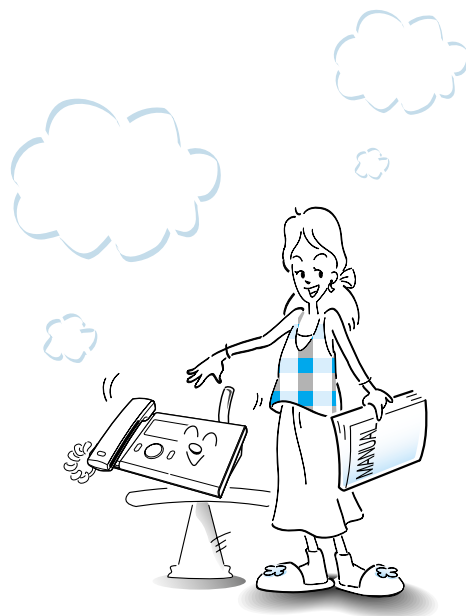
## When cleaning charger

Frequently wipe the charging connector.



## When cleaning remote set

Frequently wipe the charging connector.



# Product Specifications

Model name : SP- C700R

Classification	Unit	Remote Set	Base Set	Charger
Power	V	DC 3.6 V, 450 mAh	DC 12 V, 500 mA	DC 12 V, 500 mA
		Rechargeable battery	for 220V	
Output	mW	Below 10		
Frequency	kHz	Below 16		
Receiving sensitivity	μV	Below 2		
Usage time for remote set	Hours	Stand by: over 20, Call: over 3		
Operating temperature	℃	-10 ~ +40		
Operating humidity	%	5 ~ 90		
Weight	g	138	513	122
Dimension (length*width*height)	mm	214 × 46 × 23	233 × 130 × 57	130 × 76 × 75

# МЕМО

ИНФОРМАЦИЯ О СЕРТИФИКАЦИИ ПРОДУКЦИИ  
Абонентская радиостанция носимая стандарта 900 mHz  
SP-C700R производства фирмы Samsung Electronics Co., Ltd.  
сертифицирована органом по сертификации  
"Ростест-Москва"

Сертификат соответствия :	№ РОСС КР, АЯ46.В64675
Сертификат соответствия выдан :	29.09.2003 г.
Сертификат соответствия действителен до :	29.09.2006 г.
Абонентские радиостанции носимые типа	ГОСТ Р 51287-99
<b>SP-C700R</b>	ГОСТ 30428-96,
соответствуют требованиям нормативных	ГОСТ Р 51318,22-99 (класс Б)
документов :	ГОСТ Р 50932-96 (гр.1)
	ГОСТ Р 51318,24-99
	ГОСТ Р 50932-96



Срок службы : 7 лет

Изготовитель :

Samsung Electronics Co., Ltd.	Самсунг Электроникс Ко.Лтд.
-------------------------------	-----------------------------

Адрес:

9th Fl., Samsung Main Building.

Корея, Сеул, Самсунг Мейн Билдинг,

250, 2-Ка, ТаеPyung-Ro, Chung-Ku, Seoul, Korea

250, 2-Ка, ТаеPyунг-Ро, Чунг-Ку

**MEMO**

**MEMO**

## Free Manuals Download Website

<http://myh66.com>

<http://usermanuals.us>

<http://www.somanuals.com>

<http://www.4manuals.cc>

<http://www.manual-lib.com>

<http://www.404manual.com>

<http://www.luxmanual.com>

<http://aubethermostatmanual.com>

Golf course search by state

<http://golfingnear.com>

Email search by domain

<http://emailbydomain.com>

Auto manuals search

<http://auto.somanuals.com>

TV manuals search

<http://tv.somanuals.com>