



OfficeServ Link User Guide

Version 2.1
June 2005



ELECTRONICS

OfficeServ Link

Version 2.1

User Guide

This manual should be read before the installation and operation of the OfficeServ Link Software.

COPYRIGHT

This manual is proprietary to SAMSUNG Electronics Co. Ltd. and is protected by copyright. No information contained herein may be copied, translated, transcribed or duplicated for any commercial purposes or disclosed to third parties in any form without the prior written consent of SAMSUNG Electronics Co. Ltd.

TRADEMARKS

Samsung and  are trademarks of Samsung Electronics Co., Ltd.

OfficeServ Link is registered trademark of SAMSUNG.

Product names mentioned in this document may be trademarks and/or registered trademarks of their respective companies.

Preface

About This Manual

This manual is a user's guide for the OfficeServ Link application; this is a Computer Telephony Integration (CTI) program which allows Samsung OfficeServ and iDCS telephone systems to interact with one or more Computers connected to a Network.

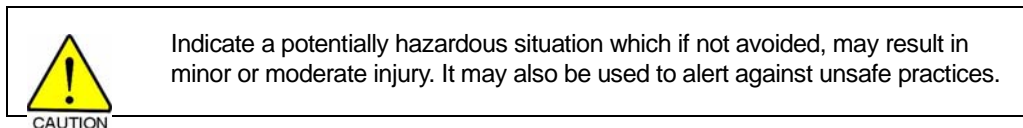
This manual describes the main function, installation, optional features, and examples of usage of the OfficeServ EasySet application.

This manual includes the phased description of program from the fundamental understanding to the processes that shall be performed for the use of OfficeServ Link. The layout of this manual is also useful for users to select and read only the chapters that currently concern them. However, before using the OfficeServ Link, users need to be familiar with this manual. Keep the notices of this manual in mind before installing or using the programs.

If you have any question or problem while using the programs of OfficeServ Link, contact an Authorized Samsung Reseller.

Conventions

The followings are symbols used in this manual. You have to be familiar with this information along with these symbols to use the OfficeServ Link safely in an appropriate way.



(This page left blank intentionally.)

Table of contents

Preface iii

About This Manual	iii
Conventions	iii

Table of contents	v
--------------------------------	----------

Chapter 1 Introduction

Overview of OfficeServ Link.....	7
Various Connections to PBX systems.....	7
Various Option Settings	7
License Management	7
Evaluation Period.....	7

Chapter 2 Installation of Link.....

Preparation for installing Link	9
Computer System Requirements.....	9
DCS Key Telephone Requirements	9
Configuration Environment.....	10
System Administration Requirements	11
Installation	11
Post Installation	16
Checking the registered program group	16
Installing the Link License.....	16

Chapter 3 OfficeServ Link Settings

Executing OfficeServ Link	17
Description of Link Main Window	18
Configuration of Link Main Window	18
Communication Environment Setup	20
Connection mode to telephone system	20
Communication environment setup for SIM / Serial cable connections	21
Communication Environment Setup for TCP/IP connections.....	21
Communication Environment Setup for user connection in standby	22
Example of Environment Setup	23
Option Settings.....	24
Normal option	24
Message Monitoring and Saving Option	25
SMDR / UCD Transmition Options.....	27
OfficeServ Call+ Function Support Option	27
Link State Message Display Option	27
Link Display Language Option.....	28
Switch Link Recovery Try Count Option	28
Recovery Try Time Period Option	28

Chapter 4 Using Link	31
Connecting to a telephone system	31
Connecting PBX system after Setup of Communication Environment.....	32
Disconnecting to the PBX system and user	35
Chapter 5 Link Operating State View	36
Viewing Link state in Default mode	36
Chapter 6 Message Monitoring	38
Call processing message monitoring program	38
SMDR / UCD Message Monitoring Program	41
Installing Monitoring Program on other Computer.....	46
Chapter 7 License Registration	49
Running the License Tools	49
Installing the License	50

Chapter 1 Introduction

Overview of OfficeServ Link

The OfficeServ Link version 2.1 (called Link) is a software product that sits between CTI applications, (based on the Microsoft TAPI 2.x specifications), and Samsung's OfficeServ and iDCS range of telephone systems. Many different CTI applications based on TAPI 2.x can interact with the telephone system through the intervention of Link. Also, all kinds of call processing events generated from the telephone system are transferred to each CTI application through the intervention of Link.

The Link has the following functions:

Various Connections to PBX systems

The Link supports various connections such as SIM, Direct Serial, TCP/IP, etc., depending on system requirements in order to connect to the telephone system.

Various Option Settings

The Link provides various options that can be easily set depending on the operational states - message-processed state view, SMDR/UCD message-related functions, OfficeServ Call, OfficeServ Call Plus, OfficeServ Operator Processing, etc.

License Management

The Link provides a license management function for Samsung CTI Products including: OfficeServ Call / CallPlus, Operator, EasySet, News etc.

To use any software, a valid license has to be installed on the Link.

Evaluation Period

You can use the OfficeServ Link in an evaluation mode for thirty days from first installation. During this evaluation period, the Link application and other OfficeServ applications connected through the Link, e.g. OfficeServ Call, will function correctly. The Link must be registered by the application of a valid license key during this period, failure to apply a license key will result in the non operation of the Link and any associated applications at the end of the evaluation period.

(This page left blank intentionally.)

Chapter 2 Installation of Link

Preparation for installing Link

Before installing the Link software, following system requirements are needed.

Computer System Requirements

- Operating System (OS)
 - Windows 2000 Professional / Server
 - Windows XP Professional

Recommended OS: Windows 2000 Professional or later
Note: Administrator privileges are required to install and run this application
- CPU
 - Intel P4 1GHz (minimum) or faster
- Hard Disk
 - 500 MB or greater
- Memory Capability
 - Minimum or more than the specification required for the installed OS
Memory Recommended: 256 MB or greater
- LAN card, COM port

DCS Key Telephone Requirements

- Telephone system software version required for Link Operation
 - iDCS 500: Ver. 1.33 or higher
 - DCS 100: Ver. 1.33 or higher
 - OfficeServ : Ver. 2.13 or higher
- Other Key telephone systems capable of interworking with OfficeServ Link



In order to check if your telephone system has the latest version capable of supporting the Link, contact your Authorised Samsung Reseller.

Configuration Environment

The following figure shows the connections between the Link-installed computer and the DCS Key telephone system, and relations among the CTI applications-installed computers.

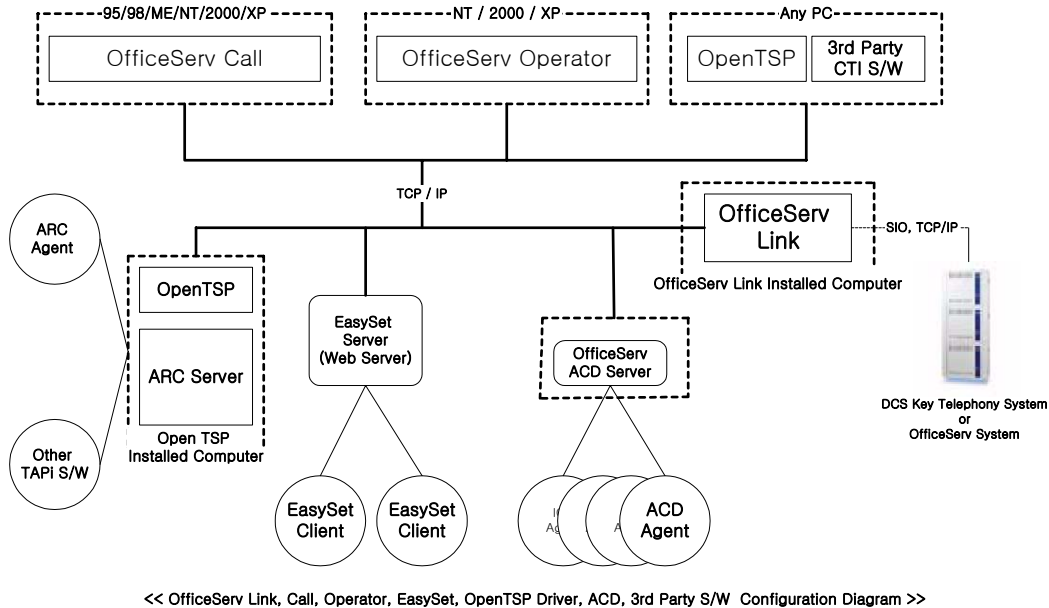


Figure 2.1 Typical configuration diagram

As shown in the figure above, the Link supports SIO connections (SIM, Direct Serial Connection) to the Telephone system, and the LAN connections of TCP/IP protocol. The connections depend on the type of telephone system. Contact your Authorised Samsung Reseller as to which connections your system supports.

In addition, the Link receives and manages a connection request from each user's computer through TCP/IP LAN, and transmits and receives messages generated between the telephone system and the CTI applications that are running on users' computers.

- Note** Link connections for each DCS Key telephone system
- iDCS 500 / 100 / OfficeServ: Supports Serial / LAN connections.

Note User's CTI applications connected to the Link shall be based on TAPI 2.x. All CTI

Application that want to connect the DCS Key telephone system have to use the OpenTSP Driver. The OpenTSP Driver is the TAPI 2.x compatible Telephony Service Provider for 3rd party TAPI compatible CTI Software.

System Administration Requirements

Users must be logged on with an Administrator privileges to install and run this program successfully. Administrators have complete and unrestricted access to the computer/domain.

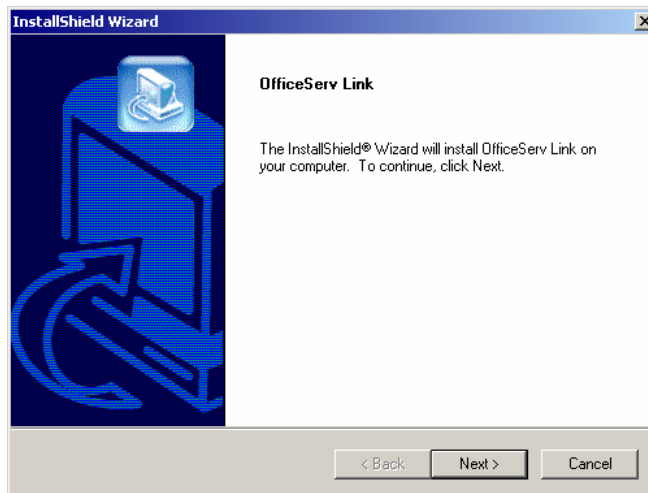
Installation

The Link installation process is provided in a single installation program. Execute LinkSetup.exe, and then the Link installation program will run automatically.

Note You have to install the Link program to use the CTI applications of the OfficeServ or iDCS telephone systems. OfficeServ Call / CallPlus, OfficeServ Operator, EasySet, and Internet Call Center Package, which are programs using the CTI application functions of DCS Key telephone system, may utilize the switching function through all the Link. Before using those programs, you have to install the Link.

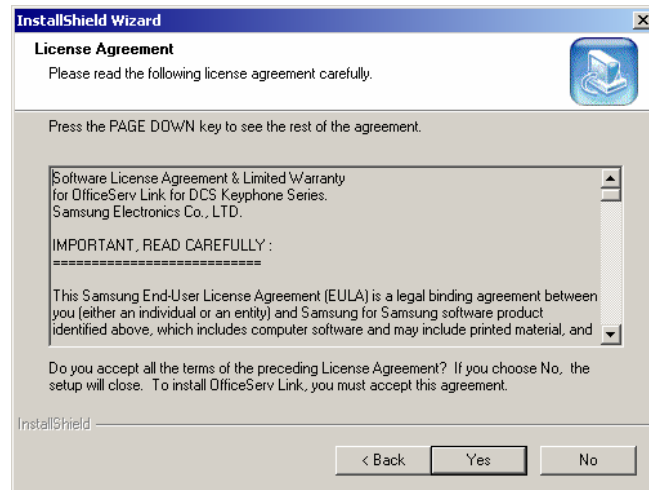
Install the Link program as follows:

1. Execute LinkSetup.exe, the Link installation program, and the following dialog box will appear on the screen.

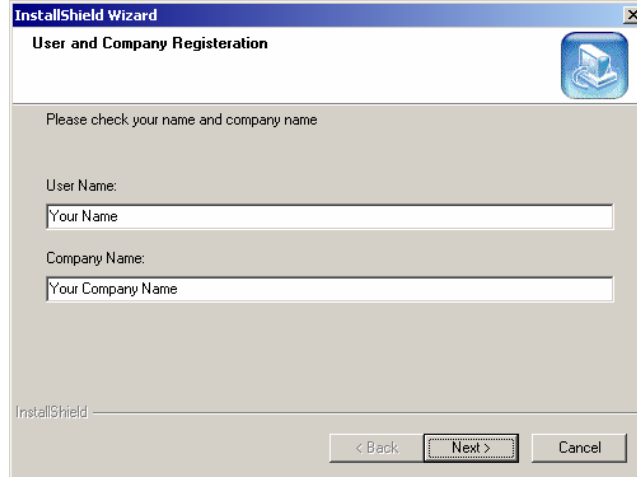


Click on the [Next] button.

2. **License Agreement** dialog box appears on the screen. Read the text of License Agreement, and click on the [Next] button if you agree to its contents. If you do not agree, the Link installation program exits automatically.



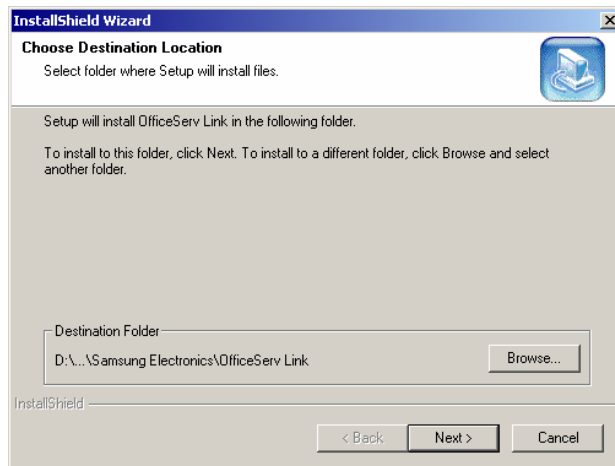
3. **User and Company Registration** box appears on the screen. Check the valid the user and company name and click on the [Next] button.



- Confirmation Box appears on the screen. Check the user and company name and click on the [Next] Button.

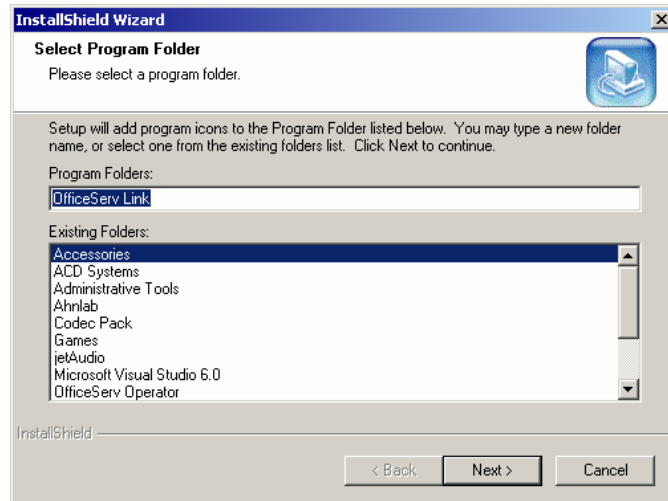


- The installation program requires you to specify the destination of Link software. By default, Link software is installed on the path of "C:\Program Files\Samsung Electronics\OfficeServ Link." Click on the [Browse] button if you want to install software on a different destination. Then, you can specify other destination.

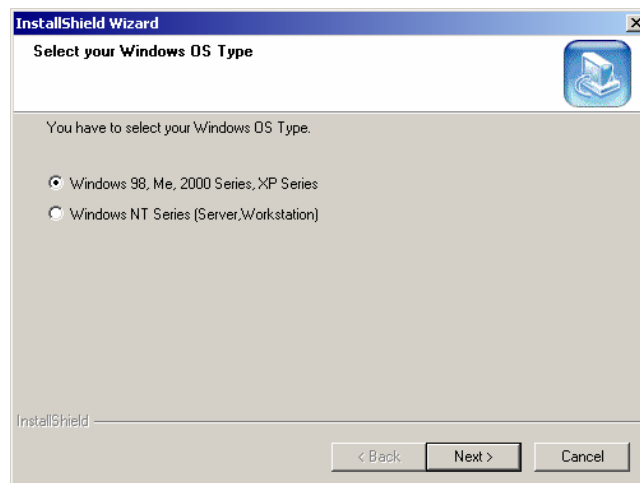


If you specified the installed destination of Link software, click on the [Next] button.

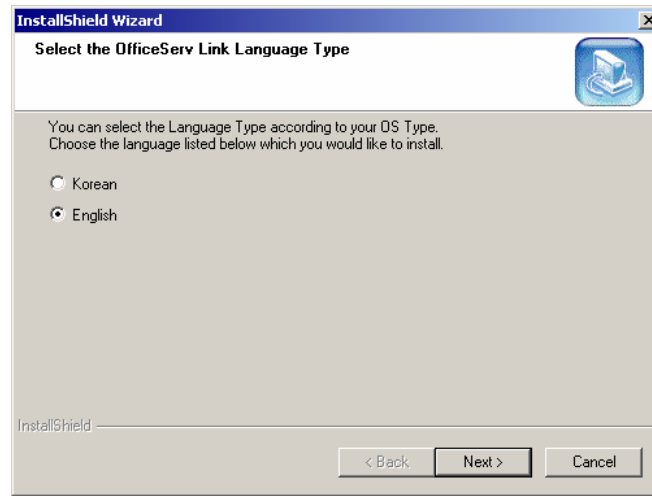
- The installation program requires you to register the group name of Link programs. By default, the installation program registers **“OfficeServ Link”** as the group name. Click on the [Next] button.



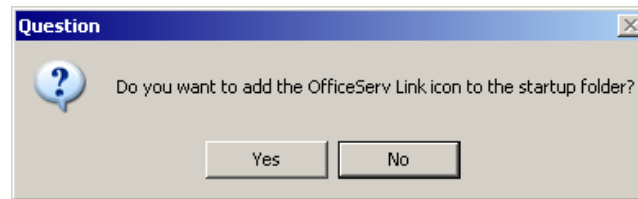
- The installation program requires you to specify the computer's Windows OS that you will install Link software in. Choose the Windows OS to install, and click on the [Next] button. (We recommend that you choose the OS coincided with that of computer – destination of software installation.)



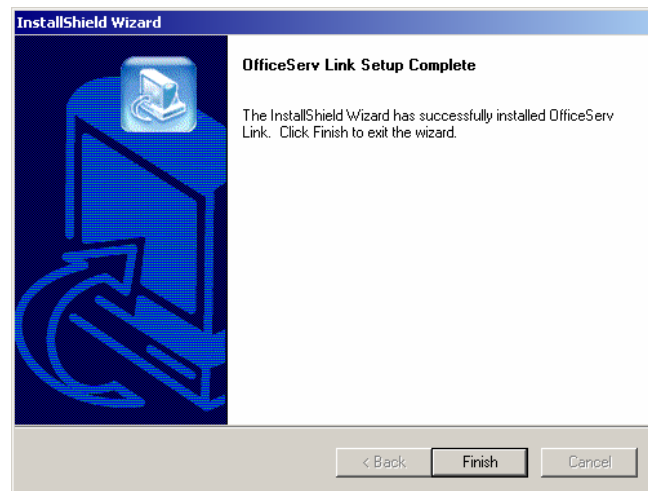
- The Link software supports two language modes: Korean and English. The text included in Link software is displayed depending on the mode specified in this dialog box. The language mode can be changed after installation if required. Choose a mode and click on the [Next] button.



9. The installation program asks if you want Link to run automatically at the time of system booting. If you want, click on the [Yes] button. Then, the program will link you to the Startup folder.



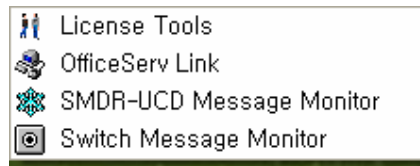
10. Installation has successfully completed. Click on the [Finish] button, then the installation program exits.



Post Installation

When Link software has successfully completed, you have to ensure that the following programs have installed on the computer.

Checking the registered program group



- Link: Executable program of Link
- License Tools : License Registration Tools
- Switch Message Monitor: Message monitoring program between PBX system and Link
- SMDR-UCD Message Monitor: SMDR-UCD message monitoring program

Note For further the details of each program, see Chapter 3.

Installing the Link License.

Before the Link Application can be configured and used, it must be licensed.

The License procedure is described in Chapter 7.

You can use the OfficeServ Link in an evaluation mode for thirty days from first installation.

During this evaluation period, the Link application and other OfficeServ applications connected through the Link, e.g. OfficeServ Call, will function correctly. The Link must be registered by the application of a valid license key during this period, failure to apply a license key will result in the non operation of the Link and any associated applications at the end of the evaluation period.

Chapter 3 OfficeServ Link Settings

Executing OfficeServ Link

Proceed to [Start] -> [Program] -> [OfficeServ Link] and choose Link. Then, Link program will run. As soon as Link starts running, the following dialog box appears on the screen.

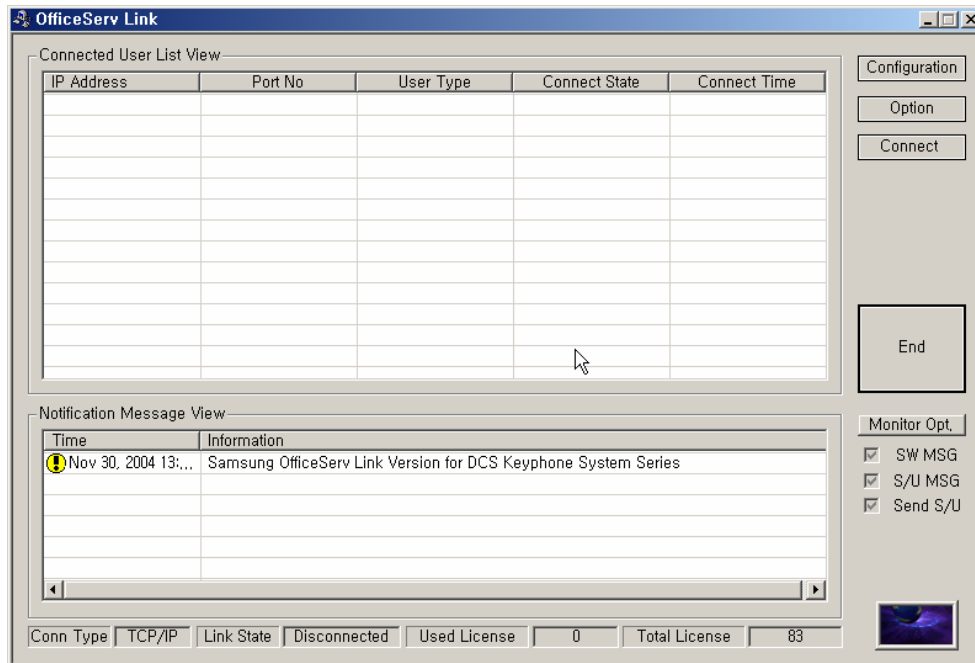


Figure 3.1 Main Window of Link

Note If you have set up the Link to link to the Startup folder when installing the Link (when you click on YES), the system booting runs the Link automatically.

Description of Link Main Window

The main window of Link consists of several panes as follows:

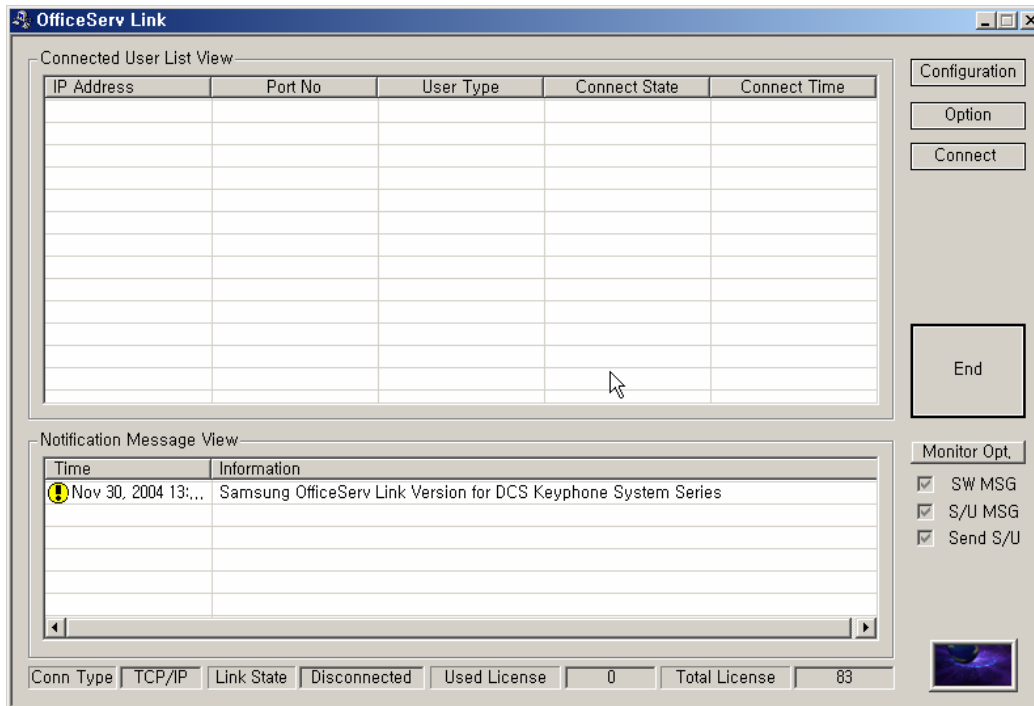


Figure 3.3 Main Window of Link

Configuration of Link Main Window

- User connection state pane
This area indicates information of each user who has connected to the Link software. This pane shows the state of users currently connected to the Link in real time.
- State message pane
This area indicates the current working state of Link. This pane shows connection state to the telephone system, connection state to user, and error description if an error occurs.
- Function buttons
These buttons are related to the environment setting and operation of Link software. The use of these buttons depends on whether or not the pertinent functions can be used. You can enable and disable these function buttons during setup. The types of function buttons are as follows:
 - Set Communication Environment (**Configuration**)
This function button allows you to set the parameters for connection to the telephone system including the IP address and also define the user connection

ports required.

- Connect / Disconnect (/)
this function button is a toggle button and allows you to connect to or disconnect from the telephone system.
- Set Options ()
this function button allows you to set up various options within the Link software. With this button, you can set whether or not to use the user management function, the message monitoring function, and language mode, etc.

- Link Status bar information

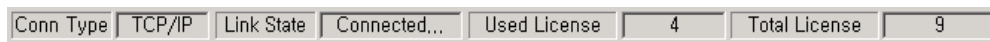


Figure 3.3 Status Bar

The main window of Link has a status bars showing the current working status.

The indications are as follows:

- Connection mode: Indicates the currently set connection mode.
- Connection state: Indicates the connection state between telephone system and Link.
- The number of used License: Indicates the number of the currently connected software with the allowed license.
- The number of Total License: Indicates the number of total license.

Note The description of Link state indications is included in that of option settings and function buttons.

Communication Environment Setup

You have to set up communication environment correctly for the normal working of Link software. Choose **Configuration** button, then the following dialog box will appear on the screen.

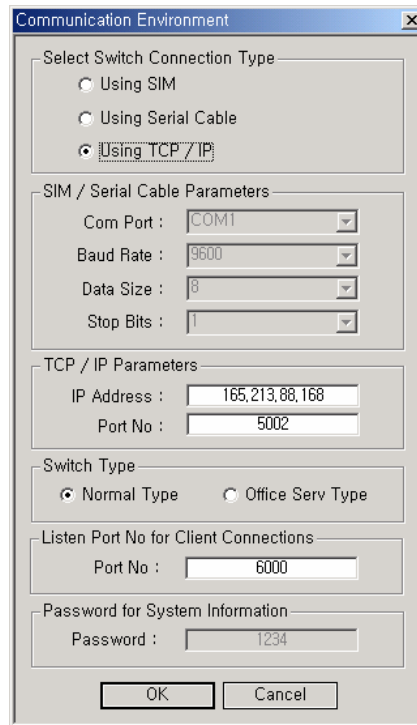


Figure 3.4 Setting communication environment

The dialog box for setting communication environment allows you to specify various settings as follows:

- Connection mode to Telephone system
- Communication environment for SIM / Serial connection mode
- Communication environment for TCP/IP connection mode
- Switch Type for communication environment
- Communication environment for user connection standby
- Password Information for requesting switch information

Connection mode to telephone system

Link provides three kinds of connection modes for Samsung telephone systems. The dialog box for setting the communication environment of Link allows you to select entries depending on the system in use.

You can choose one of the following three connection modes.

- SIM connection mode: Uses SIM Module to connect the PBX system.
- Serial Cable connection mode: Connects a serial cable to the PBX system directly.
- TCP/IP connection mode: Uses LAN-based TCP/IP to connect

These three connections are basically divided into Serial communications and TCP/IP communications. Because both methods need environment settings different from each other, the appropriate communication parameter dialog box becomes active once the primary communications method is selected.

Communication environment setup for SIM / Serial cable connections

This entry allows you to change environment settings for serial communications. The environment settings for serial communications are as follows:

- COM Port: Receives the COM port No. of computer. The Link software uses the specified COM port No. to set up the channel of serial communications to connect the telephone system.
- Baud Rate: Receives the value of serial communications. Your specification of this value depends on the baud rate of system. By default, the value is defined as 9600 bps. However, as for iDCS 500 / OfficeServ, you have to use the primary speed of serial communications as 19200 bps. This value shall conform to the primary speed of PBX system.

Note

Primary speed of serial communications for each telephone system

- DCS 180: SIM Type, 9600 BPS
- SDX COMPACT: SIM / Serial Type, 19200 BPS
- iDCS 500/OfficeServ: Serial, 19200 BPS

Each system has a function of changing the baud rate. For the setting related with your installed system, contact an Authorised Samsung Reseller.

- Data Size: A value of 8 bits is used by default. This value shall coincide with that of communication environment of telephone system. Usually, this value is not changed.
- Stop Bits: A value of 1 bit is used by default. This value shall coincide with that of communication environment of telephone system. Usually, this value is not changed.

Communication Environment Setup for TCP/IP connections

Some Samsung telephone systems support the LAN-based TCP/IP communications. The environment settings for TCP/IP connections are as follows:

- IP address: Receives the IP address of telephone system working in TCP/IP. (See the **MMC 830** settings of Key telephone system.)
- Port No.: Receives the port No. waiting for a connection request from the Link. By default, this value is set to **5002**. Usually, this value is not changed.

Note

TCP/IP connection is the preferred method of connection for iDCS and OfficeServ Systems.

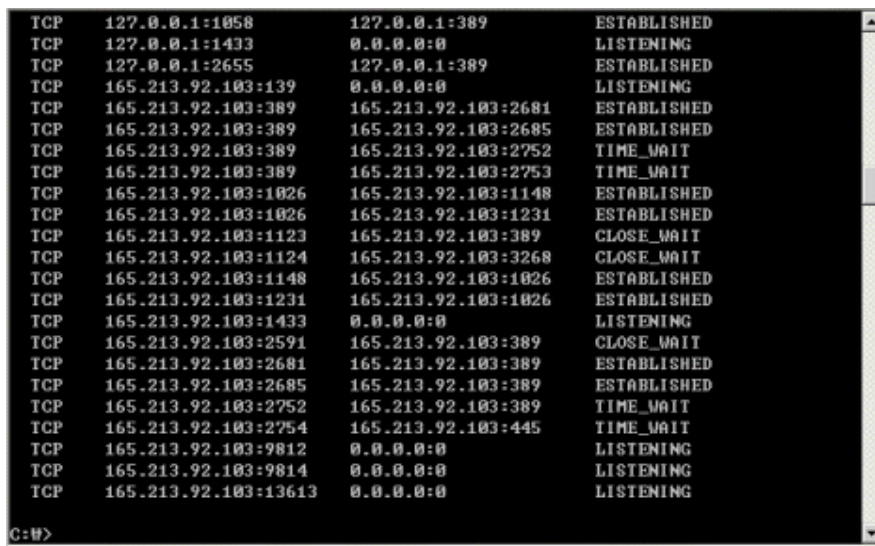
The other methods are retained for compatibility with previous systems.

Communication Environment Setup for user connection in standby

As soon as connections have been successfully completed with the telephone system, the Link starts a process in order to perform the service needed to receive requests from users. In the LAN-based TCP/IP case this listening port is set to **6000** by default. Usually this will not need to be changed, but port numbers 1024 or higher can be used if necessary. Values of 0 ~ 1023 have been already built in the Link.

A port currently being used for another service by the computer cannot be specified. There is a command for you to check which TCP/IP port numbers are currently used. Use the command at the command prompt of Windows as follows:

```
c:\>Netstat -a -e -n -p TCP
```



```

TCP    127.0.0.1:1058      127.0.0.1:389      ESTABLISHED
TCP    127.0.0.1:1433     0.0.0.0:0          LISTENING
TCP    127.0.0.1:2655     127.0.0.1:389      ESTABLISHED
TCP    165.213.92.103:139 0.0.0.0:0          LISTENING
TCP    165.213.92.103:389 165.213.92.103:2681 ESTABLISHED
TCP    165.213.92.103:389 165.213.92.103:2685 ESTABLISHED
TCP    165.213.92.103:389 165.213.92.103:2752 TIME_WAIT
TCP    165.213.92.103:389 165.213.92.103:2753 TIME_WAIT
TCP    165.213.92.103:1026 165.213.92.103:1148 ESTABLISHED
TCP    165.213.92.103:1026 165.213.92.103:1231 ESTABLISHED
TCP    165.213.92.103:1123 165.213.92.103:389 CLOSE_WAIT
TCP    165.213.92.103:1124 165.213.92.103:3268 CLOSE_WAIT
TCP    165.213.92.103:1148 165.213.92.103:1026 ESTABLISHED
TCP    165.213.92.103:1231 165.213.92.103:1026 ESTABLISHED
TCP    165.213.92.103:1433 0.0.0.0:0          LISTENING
TCP    165.213.92.103:2591 165.213.92.103:389 CLOSE_WAIT
TCP    165.213.92.103:2681 165.213.92.103:389 ESTABLISHED
TCP    165.213.92.103:2685 165.213.92.103:389 ESTABLISHED
TCP    165.213.92.103:2752 165.213.92.103:389 TIME_WAIT
TCP    165.213.92.103:2754 165.213.92.103:445 TIME_WAIT
TCP    165.213.92.103:9812 0.0.0.0:0          LISTENING
TCP    165.213.92.103:9814 0.0.0.0:0          LISTENING
TCP    165.213.92.103:13613 0.0.0.0:0          LISTENING

```

Figure 3.5 Status View of Ports in Use

Note The setting of communication environment can be done only in the offline status between Link and telephone system. Online state (Disabled) does not allow you to activate this function button.

Example of Environment Setup

- Choose the TCP/IP connections.
- Specify the IP address of PBX system and port no. (5002) in standby for the entries in question.
- Specify the port No. in standby for user connection. Default is 6000.

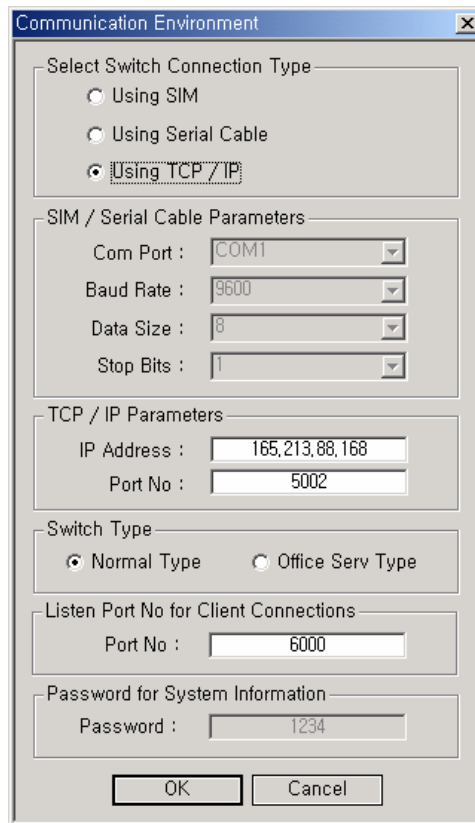


Figure 3.6 Example of TCP/IP connections

Click on the [Yes] button, and then the changes are saved.

Option Settings

The Link has option entries that allow you to control various operations. Choose the option button and the following dialog box will appear on the screen.

Figure 3.7 Options Menu

The following description applies to the function of each entry.

Normal option

This option is used to control the operational features of Link.

Restriction for the currently connected users in number

This value will be set automatically when the valid license key is installed.

Figure 3.8 Status indication bar showing the number of currently installed licenses

Note The Link will not accept any client connection requests without a valid license. To get the valid license key, Contact the Authorised Samsung Reseller.

Message Auto Clear Option.

During Operation the Link shows various status messages on the status message bar placed at the bottom of the Window. If enabled, the maximum number of message lines retained can be set in this field. (selected from a range of 100 to 9999). If disabled, a maximum of 9999 lines is specified. If the number of message lines exceeds the maximum, the additional lines will be deleted.

Note We recommend that you enable the message Auto clear option, and set the number of lines to a low setting during normal use. If you specify a high value, the performance of Link may be affected.

Automatic connection to PBX system at Link startup

When the communication environment has been set up and the Link has been normally connected to the telephone system, this option allows you to make the Link connect automatically to the telephone system on application startup.

This is recommended for normal use.

Note When the Link has been linked to Startup folder during installation, and this option is selected, the Link will run automatically when the computer is started, and the Link will automatically attempt to connect to the telephone system. If you need to change the communication environment, or are reconfiguring the system, this option should be deactivated before restarting.

Message Monitoring and Saving Option

The Link has the ability of transmitting internally processed messages to an external monitoring program. This monitoring program is installed together with Link software. In addition, if you install the additionally provided monitoring program, you can also monitor the messages that are currently processed via LAN on the other computers.

General message monitoring option settings

A general message means a call-processing message that is transmitted and received between Link and the telephone system. The Link transmits the currently exchanged general message to the general message-monitoring program, and the monitoring program shows you the received message. It also provides a Save function.

The General message monitoring program, [Switch Message Monitor] is installed when Link software is installed.

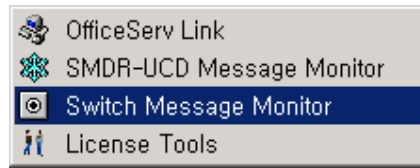


Figure 3.9 General message monitoring program

For connection to the general message monitoring program, Port Number '6001' is specified by default. You can access to the Link by using the IP address of computer that Link runs and its specified port No, when setting up the monitoring program. A value of '6001' is default.

SMDR/UCD message monitoring option settings

SMDR message or UCD message can be transmitted to the Link from the telephone system, according to the settings of CTI option. The SMDR / UCD message can provide charging or UCD group information through an additional program (not supplied). The Link can monitor such SMDR / UCD messages in the form of that is transmitted from the telephone system. To monitor such messages, the Link provides the SMDR / UCD message monitoring program similar to the general message-monitoring program. It is set to '6002' by default.

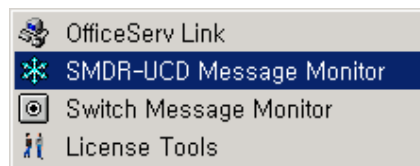


Figure 3.10 SMDR / UCD message monitoring program

Information of the message monitoring setting state is indicated on the main window of Link as follows:

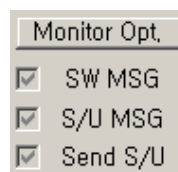


Figure 3.11 Link indicator for message monitoring setting status

Note The detailed description of Switch Message Monitor and SMDR / UCD Message Monitor program is included in the section of message monitoring.

Password Protection Option

The Link protects the anonymous access of a CTI or SMDR port by using the password. Before connecting the message monitoring port, each monitor program should send the valid password to the Link. the link can change the password anytime.

SMDR / UCD Message External Send Options

The Link provides a port capable of transmitting two messages for use by optional SMDR or UCD collection and analysis software, independently of the SMDR / UCD Message Monitor. This Port No. is 6003 by default.

Note According to the 3rd party application, you can change the access method for the SMDR / UCD Message external send option. With the password protection mode, the 3rd party application should follow the password check protocol before accessing the external send port. Without the protection mode, any 3rd party application can access the SMDR / UCD message external send port. You have to remember that SMDR or UCD message can include some internal security data relating to system or each device. To protect them, use the Password protection mode..

OfficeServ Call+ Function Support Option

The OfficeServ CallPlus program transmits caller information saved in the computer to the telephone system, based on the CLI details of the originating call, so that the telephone system can display this and other pertinent information on the LCD of digital telephone.

However, some older types of Samsung telephone system cannot process the OfficeServ CallPlus message. In this case, the transmission of Link Plus message toward such systems may cause an error in the connection process. This option allows you to specify if the OfficeServ CallPlus message shall be transmitted to the Telephone system.

Note To check whether or not your Telephone system supports the function of OfficeServ Call Plus message, contract an Authorised Samsung Reseller.

Link State Message Display Option

In the case of a system error, the Link can transmit a trace message of its internal processes to an external program to provide debugging information. A debugging tool, DBView.exe, can be found in the Tools folder. If you execute the DBView.exe program while this option is active, you can monitor the detailed messages through the DBView.exe program and can save the output result in a file.

The Link also supports a log message save option. Link can save the current event messages into a specific log file on the Link installed folder. (Log File Name: LinkLog.txt). Whenever you want to make a log file, check the save option. The amount of data collected can grow quickly so after collecting data remember to rename or delete that log file to prevent a log file size problem.

Note The status message output options have a significant effect on the performance of Link program. Therefore, in normal use, operate the Link with these options disabled. We recommend you activate this option only when you need to trace the cause of a problem or abnormal working in the Link.

Link Display Language Option

The Link supports Korean and English, and runs in the mode specified during installation. However, this option allows you to change the language mode if necessary. If you want to change the language mode, you have to restart the Link after changing the mode and deactivating the Link. When changing the language mode, you get the following alarm message.

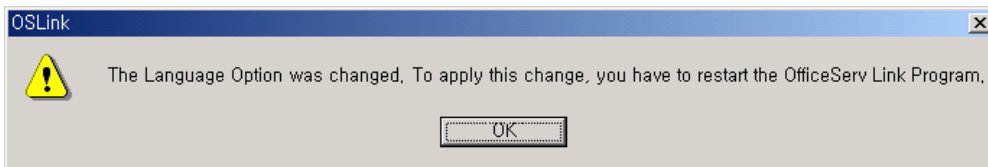


Figure 3.12 Language mode change alarm message.

Click on the [OK] button to save the changes after you have completed the setting of all the options above. If you want to cancel the changes, click on the [Cancel] button.

Note The Link installation has a default for each entry. However some of the defaults may not be correct for the particular telephone system or computer used. Therefore, we recommend you check the settings depending on the telephone system and Computer used.

Switch Link Recovery Try Count Option

When the CTI link is failed between the Link and the Switch, the link will try to recover the cti link until the retry count value is 0 or the cti link is recovered. The initial value of this recovery try count is 30.(the minimum value). User can select one value between 30 and 9999.

Recovery Try Time Period Option

User can adjust the recover interval time period by changing the recovery try time period. The default value of this option is 1 minute. User can select one value between 1 and 255.

(This page left blank intentionally.)

Chapter 4 Using Link

Check the configuration of the Phone System.

Before connecting to the telephone system, you have to set up the connection parameters within the system; the method used depends on the connection mode. (SIM, Serial, or TCP/IP).

Telephone settings for a serial Link connection

- For SIM or Serial connection mode,
Be sure that the MMC 804 settings of DCS Key telephone PBX system are as follows:

Sys IOPort	2	* (1)
Service	CTI-SMDR	* (2)
BAUD RATE	9600 or 19200	* (3)
CHAR LENGTH	8	
PARITY	NONE	
STOP BIT	1	
RETRY COUNT	5	
WAIT TIME	03000 msec.	

Note The “*” means that you can change the value as needed.
The change of (1) entry depends on the number of ports provided by Samsung Key telephone system.
The (2) entry can have one of CTI, CTI-SMDR, CTI/UCD, and CTI/S/U.
The baud rate of (3) entry depends on that of Samsung Key telephone system. The baud rate of Link shall be specified based on the value of (3) entry.

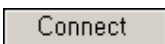
Telephone settings for an IP Link connection

- For TCP/IP connections,
Be sure that the IP address of the telephone system has been specified in the MMC 830. This IP address shall be the same as in the communication environment of Link.

Note Some of the DCS Key telephone systems that support TCP/IP connections cannot transfer SMCR / UCD information to the TCP/IP port. When interworking with these systems, the Link does not transfer the SMDR / UCD message.

Connecting to a telephone system

After setting the parameters above, click on the [CONNECT] button of Link

【  】, and proceed to the connection process of PBX system.

Note In you intend to use the Link in the user management mode, add the user information before proceeding to the connection process of PBX system. For details of user management, see later in this chapter.

Connecting PBX system after Setup of Communication Environment

1. After all the steps have been normally completed, clicking on the [CONNECT] button will generate the following dialog box on the screen.

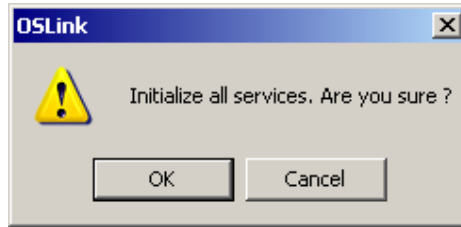


Figure 4.1 Click on the [CONNECT] button

Click on the [OK] button; and the Link attempts to connect the telephone system by using the communication environment established.

2. The following window appears on the screen.

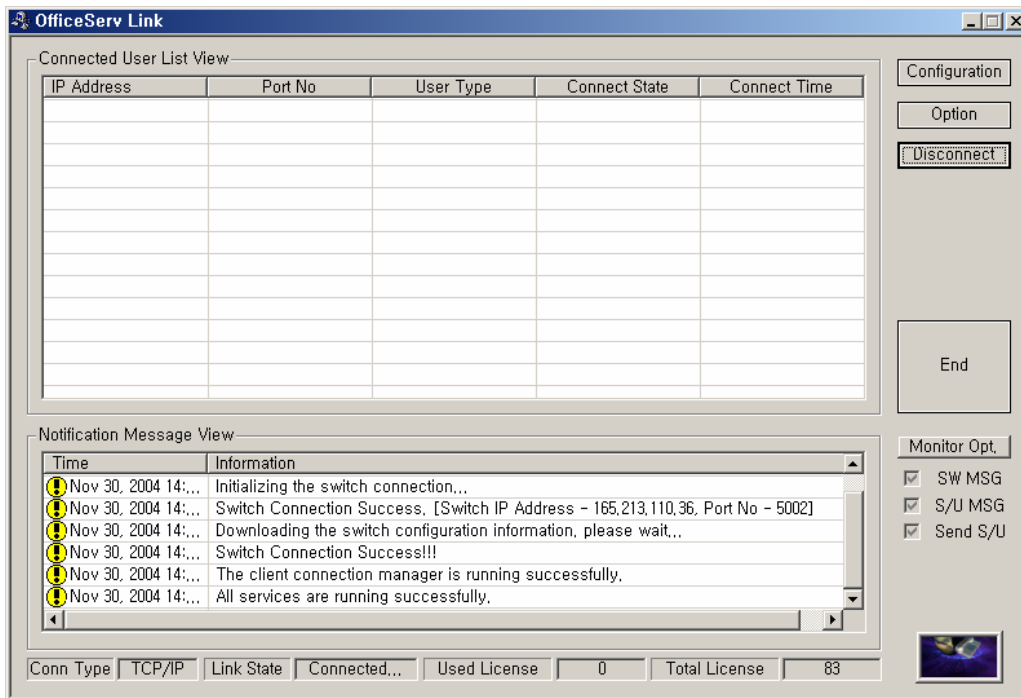


Figure 4.2 Process of connection to telephone system

- As soon as the process of connection to the telephone system has successfully

completed, the following state message pane appears on the screen.

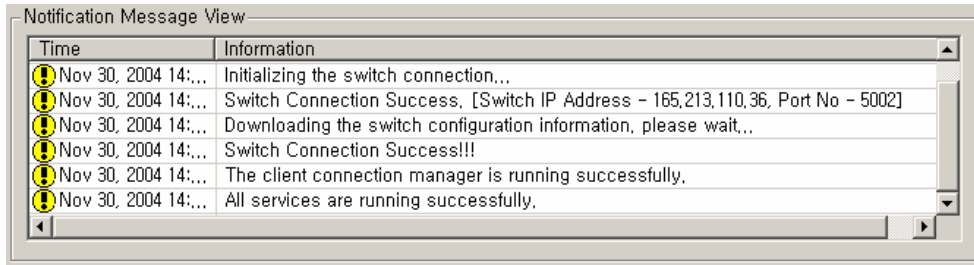



Figure 4.3 Connection success message

- The connection state of Link is indicated as Link State Connected..., and the AVI picture  rotates in the bottom right corner of the window. This means the currently connected state is normal. The static AVI picture means that the connection has stopped running or there is an error. At this time, the [CONNECT] button of Link Connect changes into Disconnect.

Note If there is an error in the connection between Link and PBX system, error information is displayed on the message pane. Information of each state displayed on the state message pane has its icon respectively.



GeneralMessage.ico



ErrorMessage.ico

The General Message Icon means that the Link notifies a user of general message, and the Error Message Icon means that the Link notifies a user of error message generated while the Link runs.

- If an error occurs during the connection process, the Link performs an automatic recovery process until the error disappears (or up to the internally limited time). If the Link cannot perform the automatic recovery, it notifies users of the error through the status message pane.

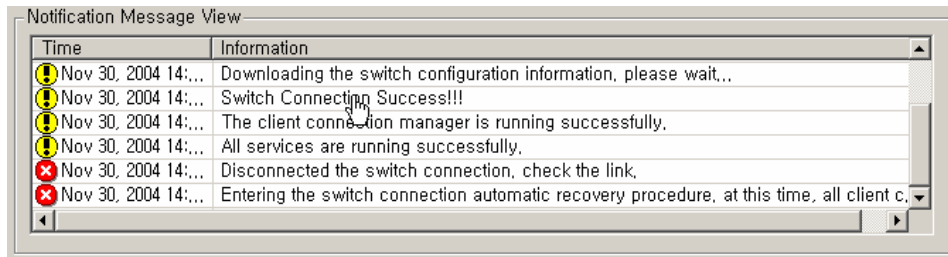


Figure 4.4 Automatic recovery message after error event

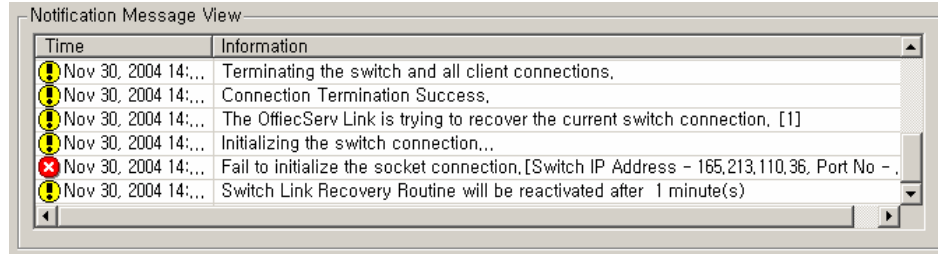


Figure 4.5 1st recovery try failed and wait 1 minute

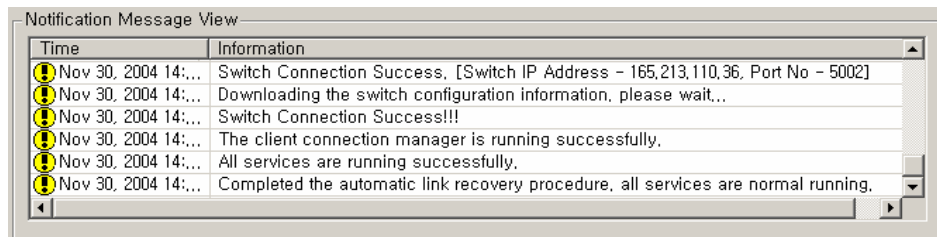



Figure 4.6 recovery success

Disconnecting to the PBX system and user

1. Click on the [Disconnect] button  to disconnect a link from the Link, if necessary. Then, the following dialog box appears on the screen

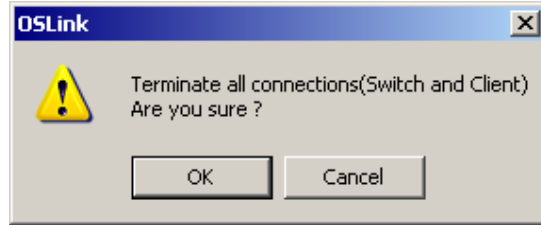


Figure 4.7 Selection of Disconnect button

Click on the [OK] button.

2. The Link displays the following pane on the screen, and finishes the connection with the telephone system and all the users.

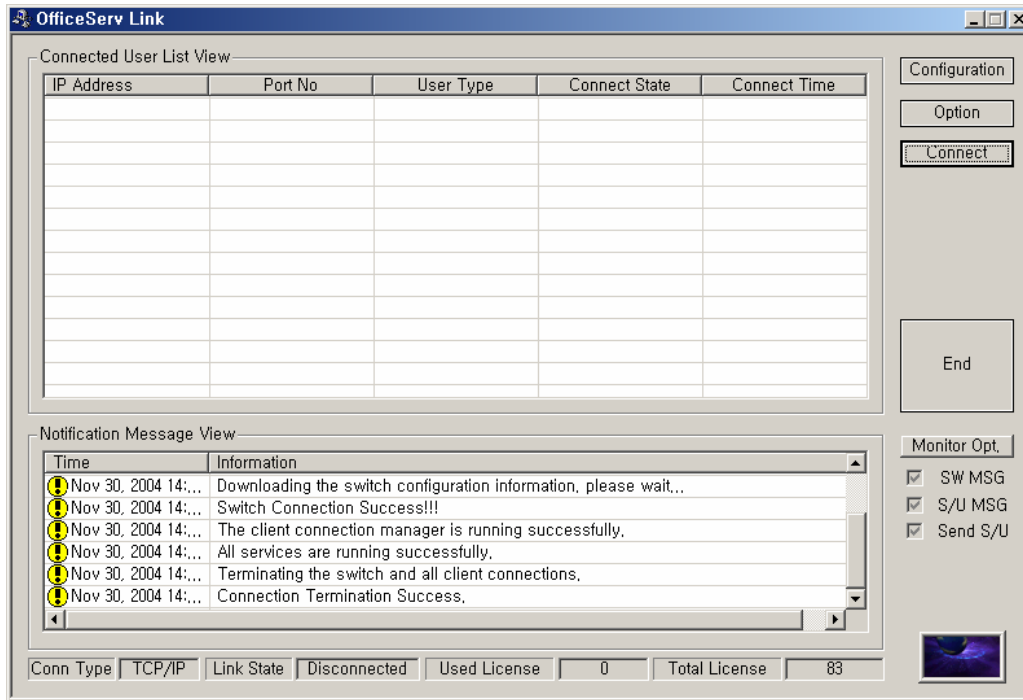


Figure 4.8 Disconnection process in progress

Successful disconnection changes the connection state of Link and indicates it as **Link State** **Disconnected**, and changes the [Disconnect] button from **[Disconnect]** to **[Connect]**.

Chapter 5 Link Operating State View

When the communications environment setup, telephone system linkage, user management, and device management have been completed for the Link and the Link is running normally, each user can access to the Link as needed.

This chapter describes the operation state for Link in normal service.

Viewing Link state in Default mode

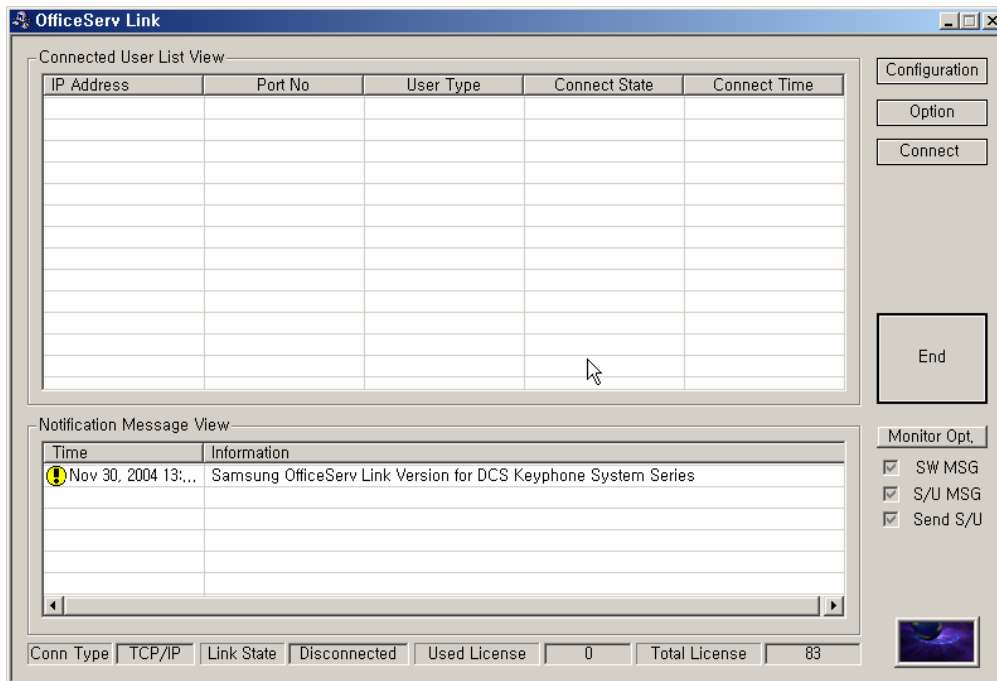


Figure 5.1 Link running in default mode

Figure 5.7 shows the normal working of Link running in default mode. While the Link is running in this mode, the user connection state window shows the following information:

- **IP address**
Indicates the IP address of connected user computer.
- **Port No.**
Indicates the port No. used for TCP/IP communication with the Link. The port No. of Link corresponds to that set in the communication environment. Default is 6000.

- User type
All the users connected to the Link running in inactive mode of user management are indicated as "User in inactive management".
- Connection state
Indicates the connection state. When it runs correctly, "Connected" is indicated.

In case that a user is currently connected

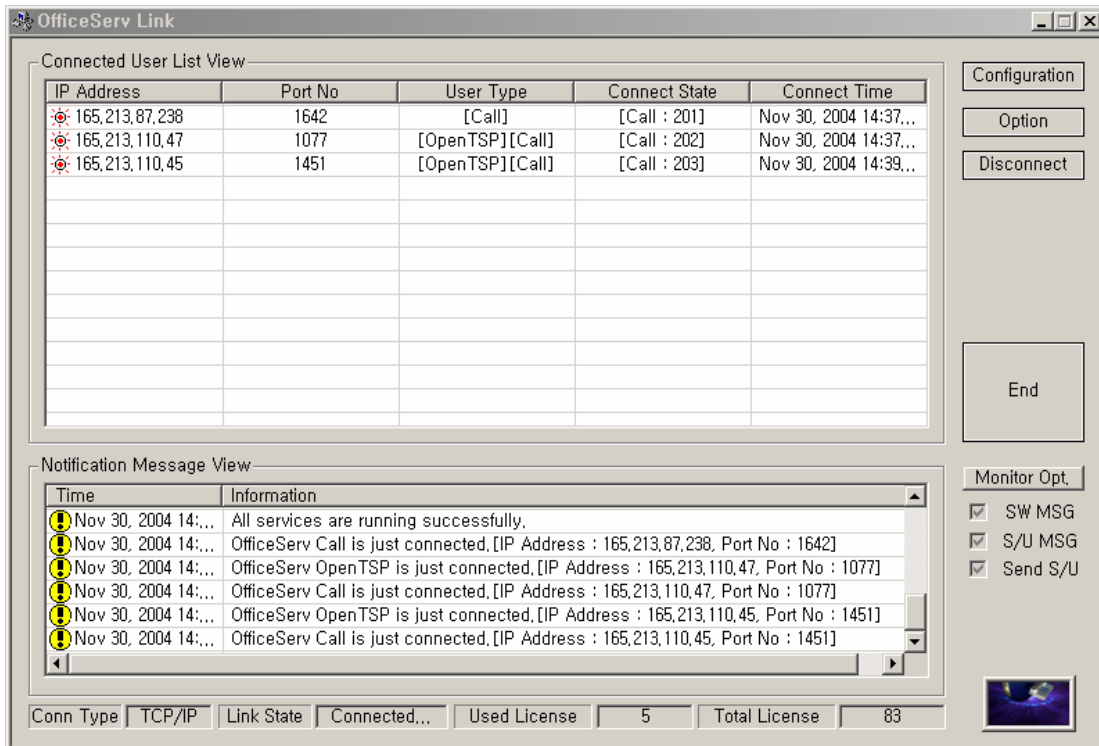


Figure 5.2 User-connected Link

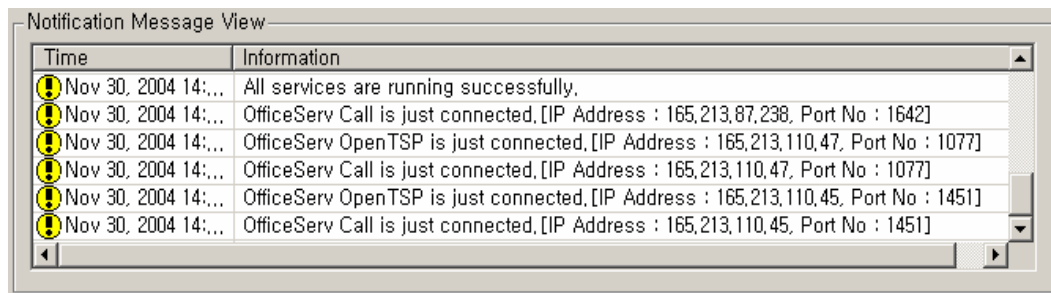


Figure 5.3 User connection status window in the default mode

Chapter 6 Message Monitoring

Sometimes, you need to monitor various message processing procedures performed by the Link. When the Link is installed, the message-monitoring program is installed.

The Link provides the program capable of monitoring the following messages.

- Call processing messages transmitted and received between the telephone system and user applications
- SMDR / UCD message provided by DCS Key telephone system

To monitor such messages, the Link provides three kinds of monitoring programs.

- Call processing message monitoring program: SCMonitor.
e.g., placed in [Program Files\Samsung Electronics\Link].
- SMDR / UCD message monitoring program: **SUMonitor.exe**
e.g., placed in [Program Files\Samsung Electronics\Link].

Call processing message monitoring program

Many kinds of messages are transmitted and received between the telephone system, Link, and other applications such as **OfficeServ Call**, **OfficeServ CallPlus**, **OfficeServ Operator**, **EasySet** as well as TAPI 2.x Standard API-based CTI applications. The call processing message monitoring program allows you to monitor the call processing messages currently received and processed by Link, regardless of program location.

Running the Switch Message Monitor (SCMonitor.exe)

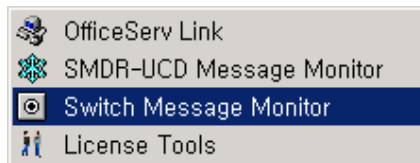


Figure 6.1 Running the Switch Message Monitor Program

Execute the Switch Message Monitor program (SCMonitor.exe), and the following dialog box will appear on the screen.

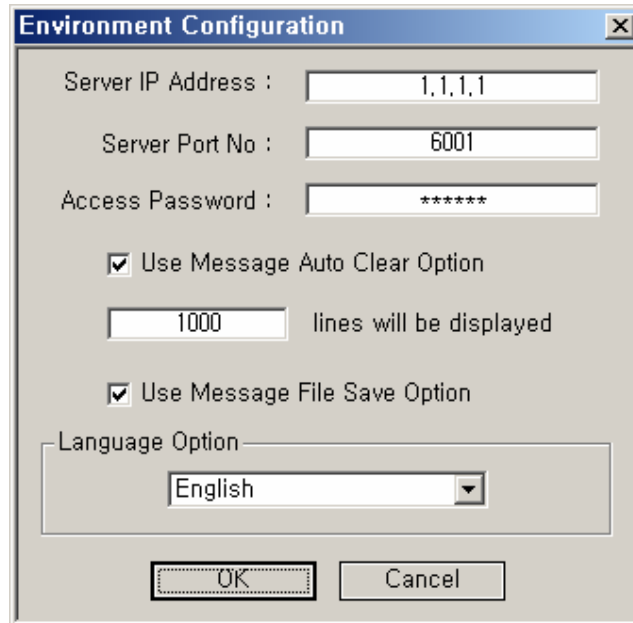


Figure 6.2 Environment Setup of Switch Message Monitor Program

Environment Setup

- Connection server's IP address
Enter the IP address of computer that the Link runs on.
- Connection server's port No.
Enter the port number specified as the general message monitoring port No. in the Link configuration menu.
- Access Password.
Enter the password for monitoring the cti message. This password will be configured by the link. if you enter the invalid password, you can't connect to the link and get any cti message.
- Option of automatic message deletion
If you select this option, the automatic message deletion function is enabled.
- Automatic message deletion line count
If the number of monitoring output messages exceeds this value while the automatic deletion option is active, message lines in excess of this number will be deleted.
- Option of saving message to file
This option allows you to save the currently monitored messages to a file in the local computer.
- Option of language
The monitoring programs support two languages: Korean and English.

Note The monitoring environment setup window appears only on the first startup of the monitoring program. For the IP address and port No. for communication with the Link, see the values entered in the environment setup entries of Link. When you have save file option is activated, the log file is placed in the log folder on the installed path. (by default, C:\Program Files\Samsung Electronics\OfficeServ Link") that the Link and Switch Message Monitor program were installed in.

Click on the [OK] button when the environment setup has completed, then the following main window of Switch Message Monitor (SCMonitor.exe) appears on the screen.

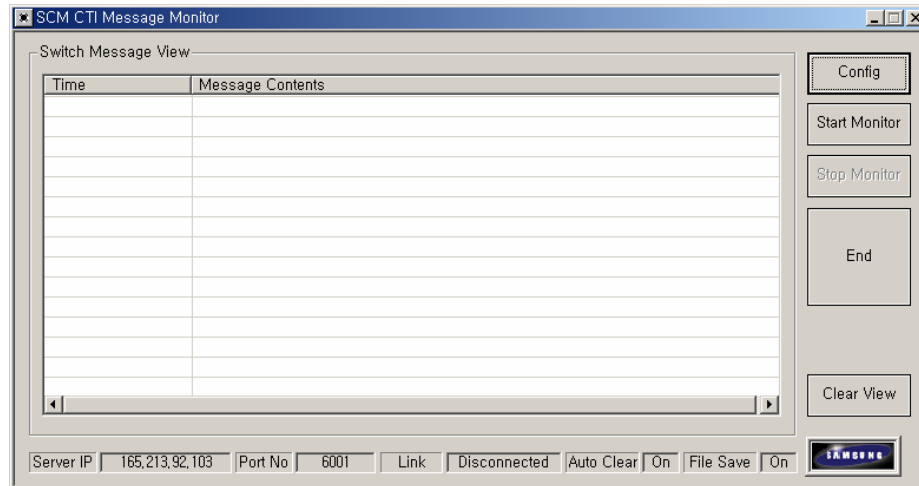


Figure 6.3 Main window of Switch Message Monitor

The configuration of the main window is as follows:

Messages

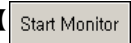
Shows the T/x Rx call processing message received by the Link. The Tx/Rx call processing messages are classified into those coming from the user applications to the telephone system and those coming from the telephone system to user applications. The monitoring program indicates this by using different Icons (→ , ←)

Config button

This button allows you to set up the environment, start / terminate monitoring, and delete messages.

Status indication bar

This bar shows the connected server, connection status, and whether or not the deletion / save function of message monitoring has been activated, etc.

Click on the [START MONITORING] button . The message monitoring starts after the Link is connected. The following figure shows an example of the monitoring program and some sample messages.

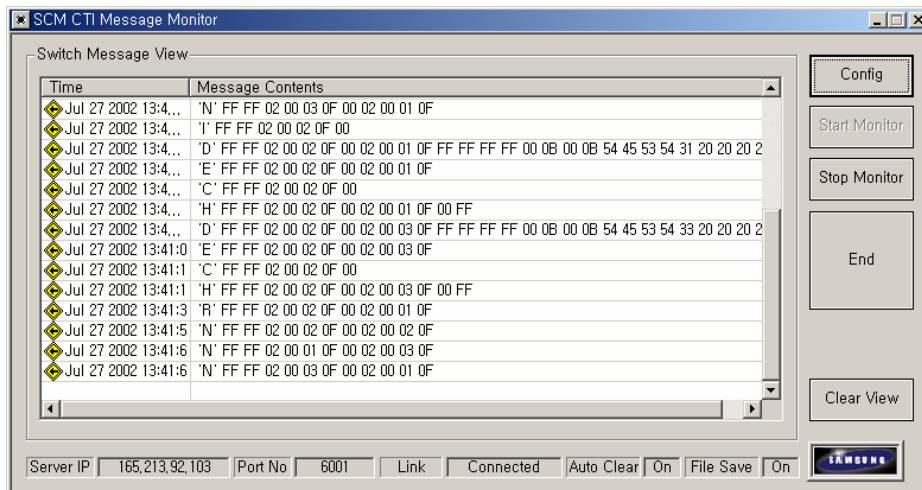
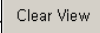


Figure 6.4 Monitoring program showing system messages

Click on the [STOP MONITORING] button [] to stop monitoring.

Click on the [CLEAR VIEW] button [] to delete the messages that are currently displayed on the window. This function does not delete messages already saved to a file.

Note The save file option appends the message to the end of the existing file until you change the file name.

SMDR / UCD Message Monitoring Program

The telephone system can provide SMDR messages and UCD messages if required to external applications for processing through an additional communications port. The SMDR / UCD message monitoring program provides the ability of monitoring such SMDR / UCD messages.

Note For the Link to receive SMDR or UCD message from the telephone system, you have to set up the MMC 804 function of the system to one of the following CTI / SMDR, CTI / UCD, CTI / S / U. The purpose of this setup is to make it possible to transmit SMDR / UCD message to the Link, in the form of a CTI event. Some Samsung telephone system may use the different MMC for this information when configured for LAN communications. For more details, contact your Authorised Samsung Reseller.

Running the SMDR / UCD Message Monitor (SUMonitor.exe)

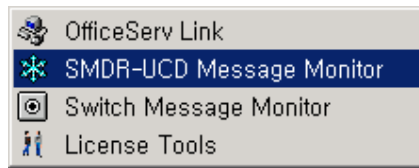


Figure 6.5 Executing the SMDR / UCD Message Monitor

Execute the SMDR / UCD Message Monitor Program, and the following dialog box appears on the screen.

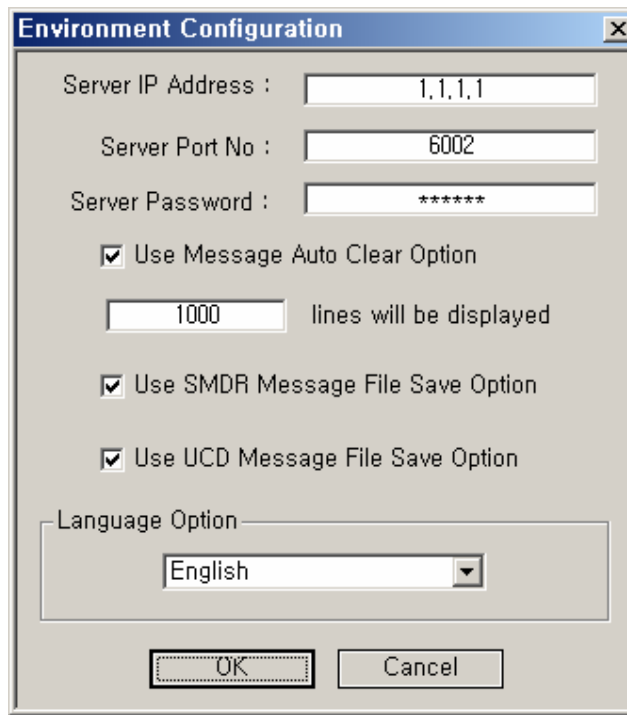


Figure 6.6 Setup of SMDR / UCD Message Monitor Environment

Environment Setup

- Connection server's IP address
Enter the IP address of computer that the Link runs on.
- Connection server's port No.
Enter the port number specified as the SMDR/UCD message monitoring port No. in the Link configuration menu.
- Access Password.
Enter the password for monitoring the smdr/ucdi message. This password will be configured by the link. if you enter the invalid password, you can't connect to the link and get any smdr / ucd message.

- Option of automatic message deletion
If you select this option, the automatic message deletion function is enabled.
- Automatic message deletion line count
If the number of monitoring output messages exceeds this value while the automatic deletion option is active, message lines in excess of this number will be deleted.
- Option of saving SMDR message to file
This option allows you to save the currently monitored SMDR messages to a file in the local computer.
- Option of saving UCD message to file
This option allows you to save the currently monitored UCD messages to a file in the local computer.
- Option of language
The monitoring programs support two languages: Korean and English.

Note The monitoring environment setup window appears only on the first startup of the SMDR/UCD monitoring program. For the IP address and port No. for communication with the Link, see the values entered in the environment setup entries of Link.
When you have save file option is activated, the file is placed in the log folder on the installed path (by default, C:\Program Files\Samsung Electronics\Link") that the Link and SMDR/UCD Message Monitor program were installed in.

Complete the environment setup and click on the [OK] button, then the main window of SMDR / UCD Message Monitor (SUMonitor.exe) appears on the screen.

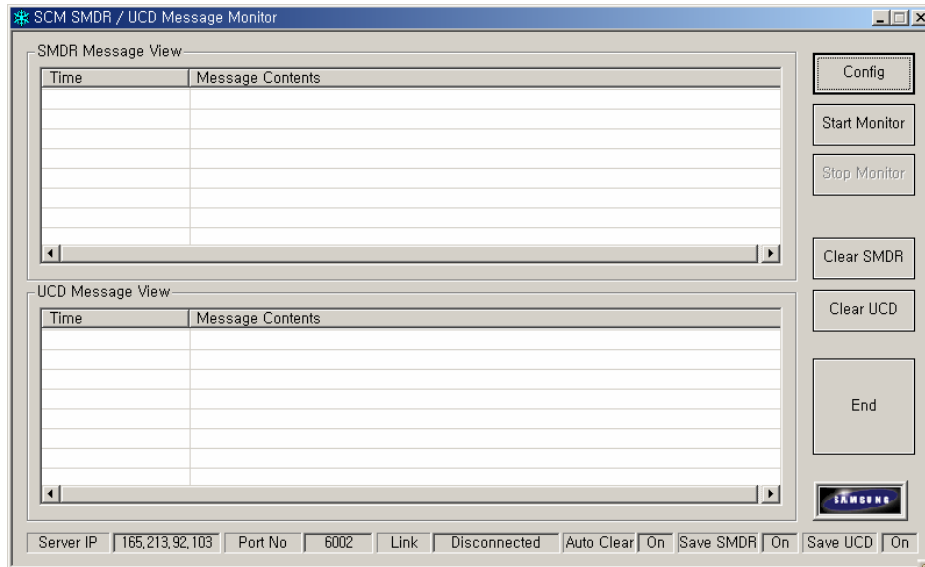


Figure 6.7 Main Window of SMDR / UCD Message Monitor

The configuration of window is as follows:

SMDR messages

This pane indicates the currently monitored SMDR messages.

UCD messages

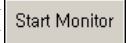
This pane indicates the currently monitored UCD messages.

Config button

This button allows you to set up the environment, start / terminate monitoring, and delete messages.

Status indication bar

This bar shows the connected server, connection status, and whether or not the deletion / save function of message monitoring has been activated, etc.

Click on the [START MONITORING] button  . The message monitoring starts after the Link is connected. The following figure shows an example of the SMDR/UCD monitoring program and some sample messages.

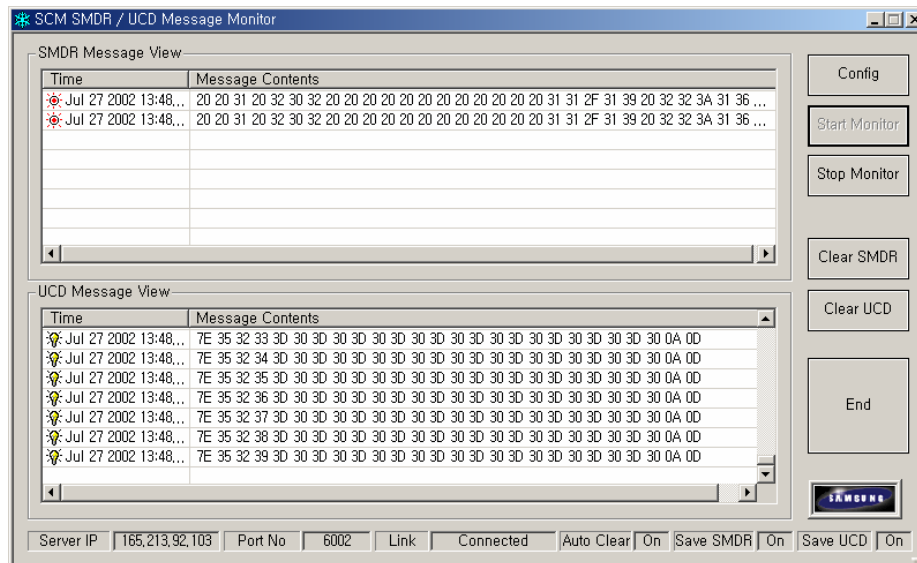
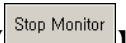
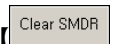
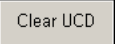


Figure 6.8 Main window of SMDR / UCD Message Monitor

Click on the [STOP MONITORING] button , then the monitoring stops running immediately. Click on the [CLEAR SMDR, UCD] buttons , , and the currently displayed messages are deleted. This function does not delete messages already saved to a file.

Note The save file option appends the message to the end of the existing file until you change the file name.

Installing Monitoring Program on other Computer

The installation of Switch Message Monitor program and SMDR / UCD Message Monitor program is completed together with the installation of Link. Sometimes, however, you may need to run the monitoring programs on another computer that the Link does not run on. To this end, you can install and use the monitoring programs on this computer.

The monitoring program setup file is located in the “C:\Program Files\Samsung Electronics\OfficeServ Link\Tools\MSGMonitor.exe”.

(This page left blank intentionally.)

Chapter 7 License Registration

This chapter describes the license installation and update procedure with the license tools applet. To use a CTI application with the link, you have to install the valid license key into the Link within 30 days of first installation..

The valid license key will be generated and distributed by an Authorized Samsung Reseller. To get more information about the license and the license key for your own purpose, contact an Authorized Samsung Reseller.

After getting the valid license key, you can install it into the link with license tools program.

Running the License Tools

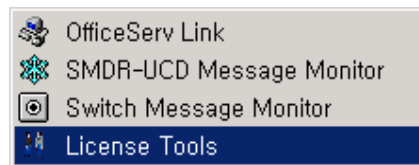


Figure 8.1 Running the License Tools Program

Execute the License Tools program, and the following dialog box appears on the screen.

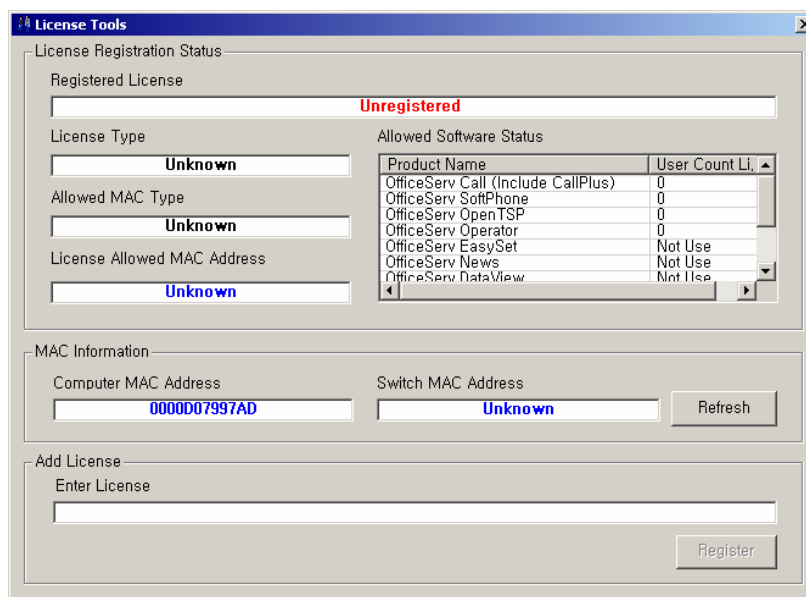


Figure 8.2 License Tools Window

- **Registered License** displays the installed license key string.
- **License Type** shows the installed license's type.
- **Allowed MAC Type** shows if the MAC address from the Telephone system or the computer is to be used. This type is determined by the license key
- **License Allowed MAC Address** shows the MAC Address to be allowed by the license key
- **Allowed Software Status** shows the applications that have been licensed by the key and can be used.
- **MAC Information** Shows the MAC Addresses detected by the Link
 - Computer MAC Address is the current computer system MAC Address.
 - Switch MAC Address is the current switch system MAC Address.

Installing the License

Copy and Paste the valid license key string into “Enter License” of Add License and click register button. If the entered license is valid, that license will be registered into the link.

The screenshot shows the 'License Tools' window with the following sections:

- License Registration Status:**
 - Registered License: **Unregistered**
 - License Type: **Unknown**
 - Allowed MAC Type: **Unknown**
 - License Allowed MAC Address: **Unknown**
- Allowed Software Status:**

Product Name	User Count Li
OfficeServ Call (Include CallPlus)	0
OfficeServ SoftPhone	0
OfficeServ OpenTSP	0
OfficeServ Operator	0
OfficeServ EasySet	Not Use
OfficeServ News	Not Use
OfficeServ DataView	Not Use
- MAC Information:**
 - Computer MAC Address: **0000D07997AD**
 - Switch MAC Address: **Unknown**
 - Refresh button
- Add License:**
 - Enter License: **DHRAJAWX-HNZGCRIZ-GRCGNFJT-BOJNRNCC-FXBIURLS-YEGRNRJW**
 - Register button

Figure 8.3 Paste the valid license key

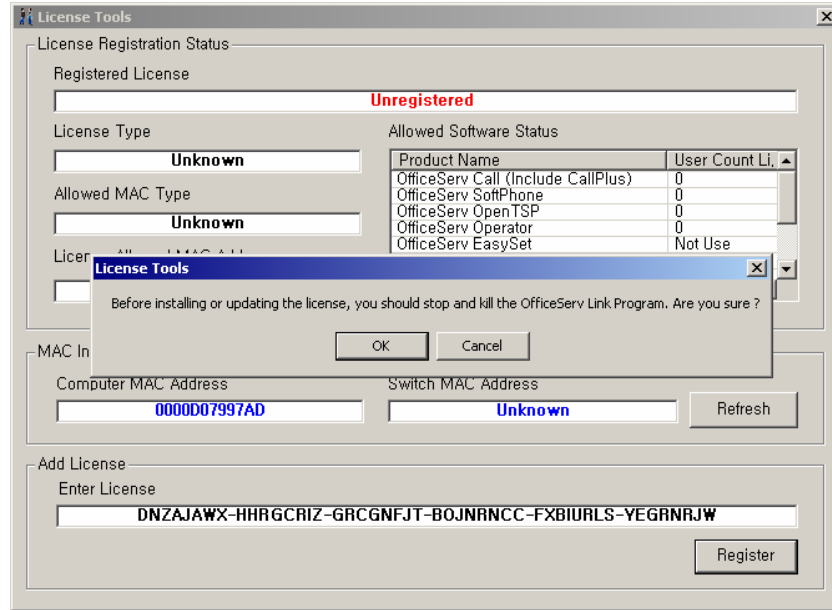


Figure 8.4 Link Shutdown Check

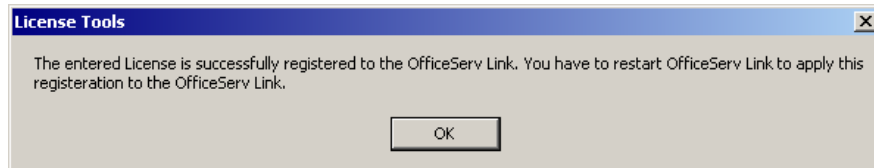


Figure 8.5 License Registration Notification

When you click OK button, the license tool will show the registered license information as shown below.

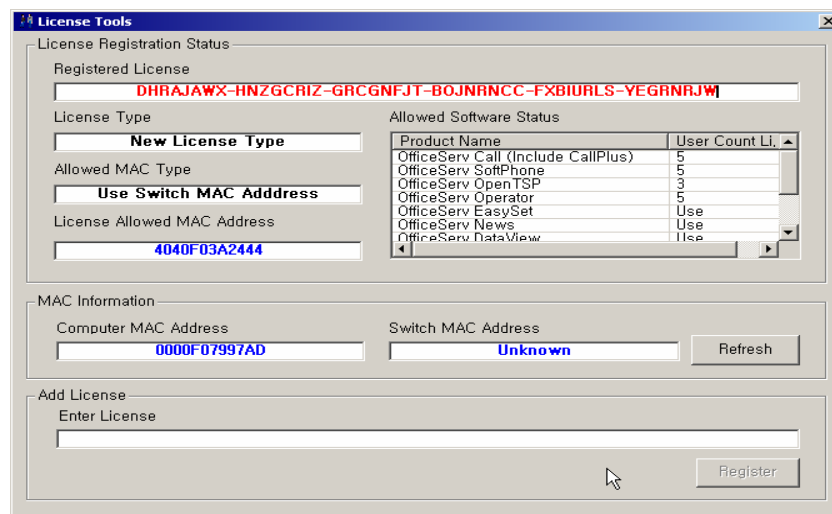


Figure 8.6 License Registration Status

If the application requirements change, the license can be updated by applying a new key in the same manner as show above.

To update your software license or to obtain a valid license, contact your Authorized Samsung Reseller.

Also, you can see the license registration information at any time by clicking the about menu of the OfficeServ Link's System Menu as shown

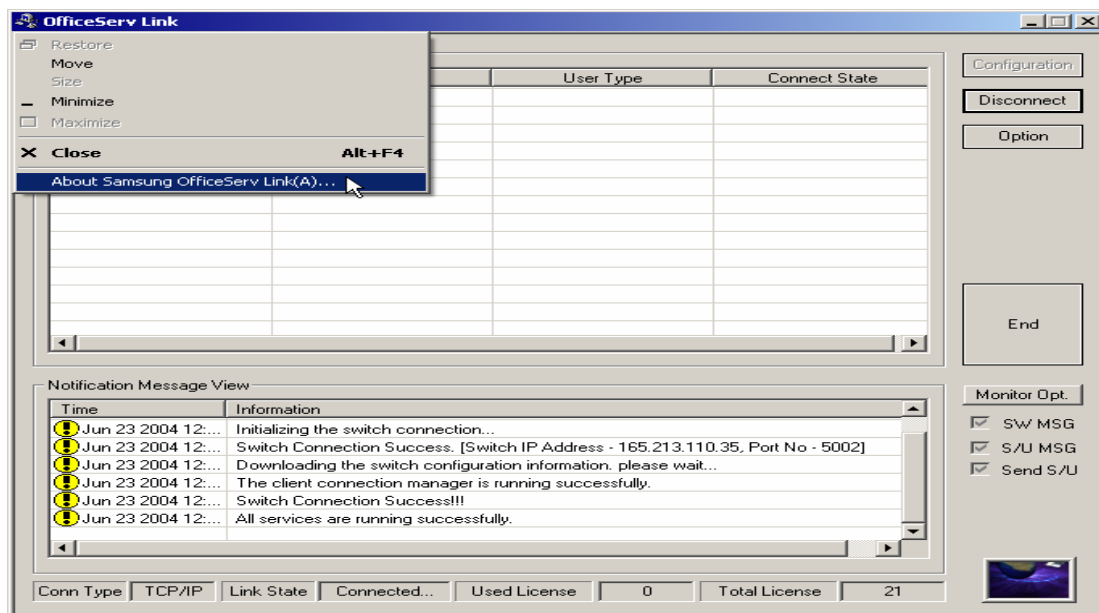


Figure 8.8 How to check the License Status

(This page left blank intentionally.)

Samsung OfficeServ Link
Ver. 2.1

User Guide

©2002 Samsung Electronics Co., Ltd
All rights reserved

Information in this document is proprietary to SAMSUNG
Electronics Co., Ltd

No information contained here may be copied, translated,
transcribed or duplicated by any from without the prior
written consent of SAMSUNG.

Information in this document is subject to change without
notice.

Visit us at

<http://www.samsungnetwork.com>



Free Manuals Download Website

<http://myh66.com>

<http://usermanuals.us>

<http://www.somanuals.com>

<http://www.4manuals.cc>

<http://www.manual-lib.com>

<http://www.404manual.com>

<http://www.luxmanual.com>

<http://aubethermostatmanual.com>

Golf course search by state

<http://golfingnear.com>

Email search by domain

<http://emailbydomain.com>

Auto manuals search

<http://auto.somanuals.com>

TV manuals search

<http://tv.somanuals.com>