

SANUS™

S Y S T E M S

NEW PRODUCT GUIDE





NEW AV FOUNDATIONS® VERTICAL SERIES

Modern Meets Practical with Foundations Vertical Series

Sanus Foundations Vertical Series combines the storage capacity of a cabinet with the discreet look of a low-profile wall mount, creating a versatile, stylish piece that complements any décor.



MODELVF5023-B1
WEIGHT CAPACITY75 lbs./shelf
AVAILABLENOW



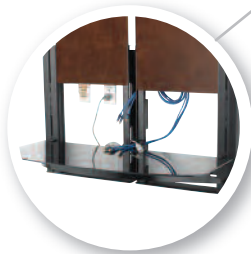
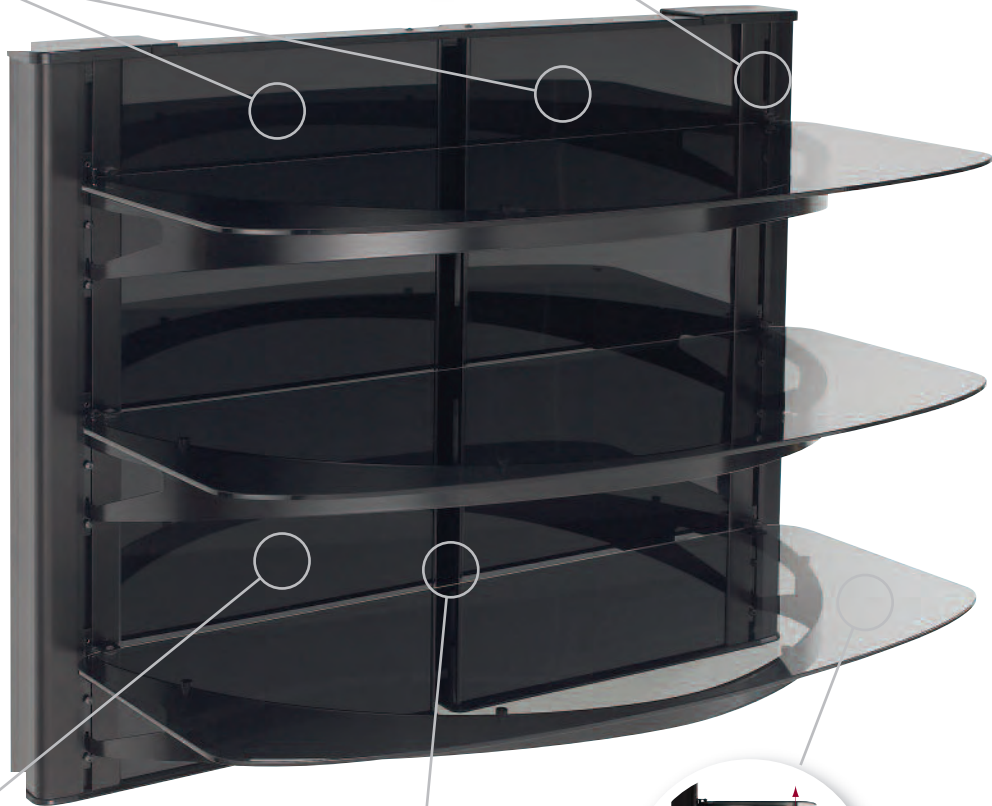
MODELVF5022-B1
WEIGHT CAPACITY75 lbs./shelf
AVAILABLENOW



Interchangeable black glass and wood back panels match any décor



Specially designed extruded aluminum brackets simplify installation by providing both lateral and vertical adjustment



Back panels are slightly offset from wall to easily conceal cables, surge protectors or wall outlets



Large, stable glass shelves are adjustable and hold up to 75 lbs. each

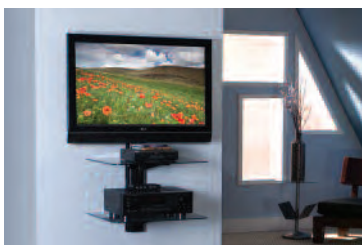


Cable management channel easily routes cabling behind unit

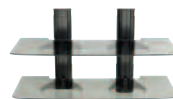
NEW AV FOUNDATIONS® VERTICAL SERIES



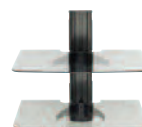
model VF5022-B1



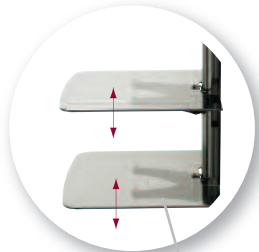
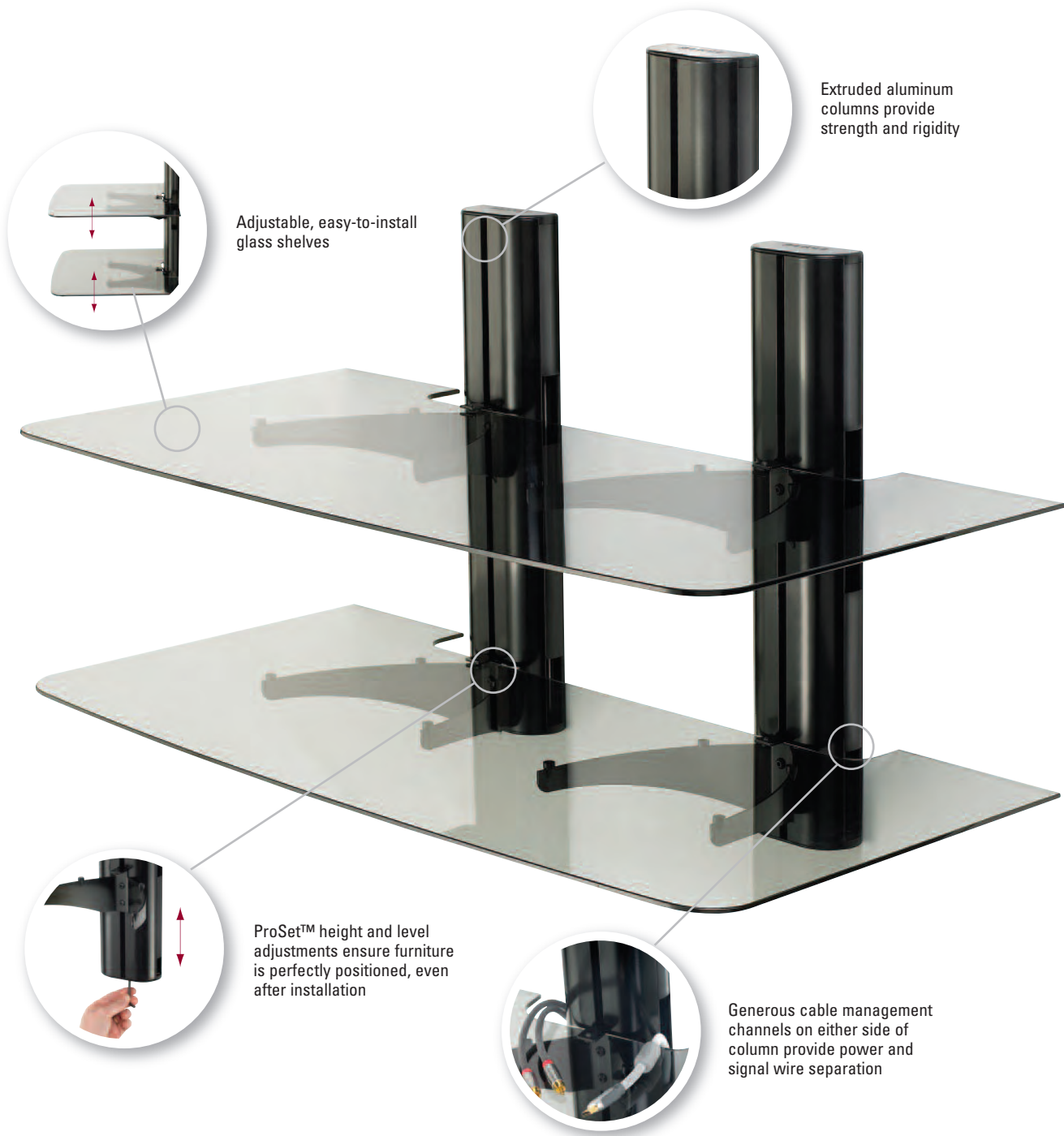
model VF2012-B1



MODELVF2022-B1
 WEIGHT CAPACITY75 lbs./shelf
 AVAILABLENOW



MODELVF2012-B1
 WEIGHT CAPACITY50 lbs./shelf
 AVAILABLENOW



Adjustable, easy-to-install glass shelves



Extruded aluminum columns provide strength and rigidity



ProSet™ height and level adjustments ensure furniture is perfectly positioned, even after installation



Generous cable management channels on either side of column provide power and signal wire separation

NEW AV FOUNDATIONS® DESIGNER SERIES

The Latest Addition to the AV Foundations Family

The new Designer Series line was created exclusively for Sanus by Cramer Studios. Each piece features an innovative construction of mocha-finished hardwood, steel, and smoked tempered glass, giving AV gear an enclosed look without blocking infrared remote controls.

- Rich mocha-finished hardwood legs and smoked tempered-glass doors give AV gear an enclosed look without interfering with infrared remote controls
- Four steel back panels can be removed individually for easy maintenance and to allow for additional depth
- Spacious shelves are designed to accommodate even the largest AV gear
- Generous cable management channel conceals and routes wires and cables behind furniture
- Multi-adjustable hinges allow for smooth movement and perfect alignment of doors
- Unique convection cooling system allows heated air to escape through top as cooler air is drawn in through bottom



MODELDFV49
AVAILABLENovember



- Rich mocha-finished hardwood legs and smoked tempered-glass doors give AV gear an enclosed look without interfering with infrared remote controls
- Four steel back panels can be removed individually for easy maintenance and to allow for additional depth
- Spacious shelves are designed to accommodate even the largest AV gear
- Generous cable management channel conceals and routes wires and cables behind furniture
- Multi-adjustable hinges allow for smooth movement and perfect alignment of doors
- Unique convection cooling system allows heated air to escape through top as cooler air is drawn in through bottom



MODELDFAV30
AVAILABLENovember



NEW VISIONMOUNT® TECHNOLOGY: CLICKFIT™

Introducing ClickFit™ Technology

ClickFit™ technology allows a surge protector and other accessories to attach easily to Sanus **LL22 and LT25** mounts, so they stay hidden yet easily accessible.



Open wall plate provides generous space for accessories with ClickFit™ compatibility to be positioned behind TV



Surge protectors and other accessories simply snap onto center of wall plate for concealed cabling



ClickFit™ system replaces wall outlet covers, allowing HDMI inputs and electrical outlets to be positioned directly behind the TV and easily clicked onto the mount

NEW VISIONMOUNT® TILTING MOUNT

Designed with the Custom Installer in Mind

The new LT25 tilting and LL22 low-profile mounts make installation a breeze. Exclusive ProSet™ height and level adjustments ensure TVs are always perfectly positioned, even after installation. And our innovative ClickFit™ technology allows a surge protector and other accessories to snap easily to the center of the mount, so they stay hidden yet easily accessible.



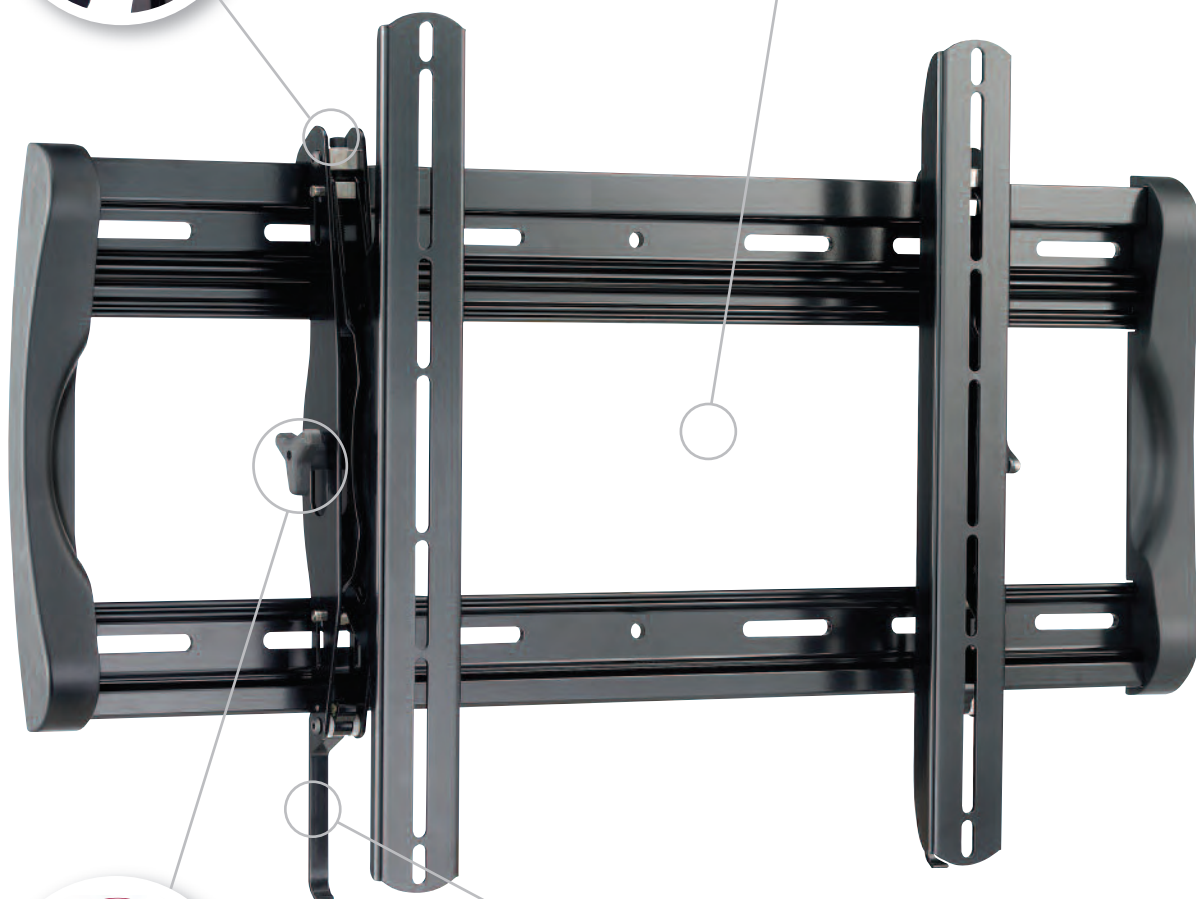
MODELLT25
TV SIZE RANGE30" – 60"
WEIGHT CAPACITY175 lbs.
AVAILABLENOW



ProSet™ height and level adjustments ensure TV is perfectly positioned, even after installation



ClickFit™ system allows surge suppressors and other accessories to snap onto mount, so they're hidden behind TV



Virtual Axis™ tilting technology allows effortless viewing angle adjustment without the use of tools



ClickStand™ feature holds TV away from wall for easy cable installation, then clicks securely back onto wall plate

NEW VISIONMOUNT® LOW-PROFILE MOUNT



model LT25



model LL22



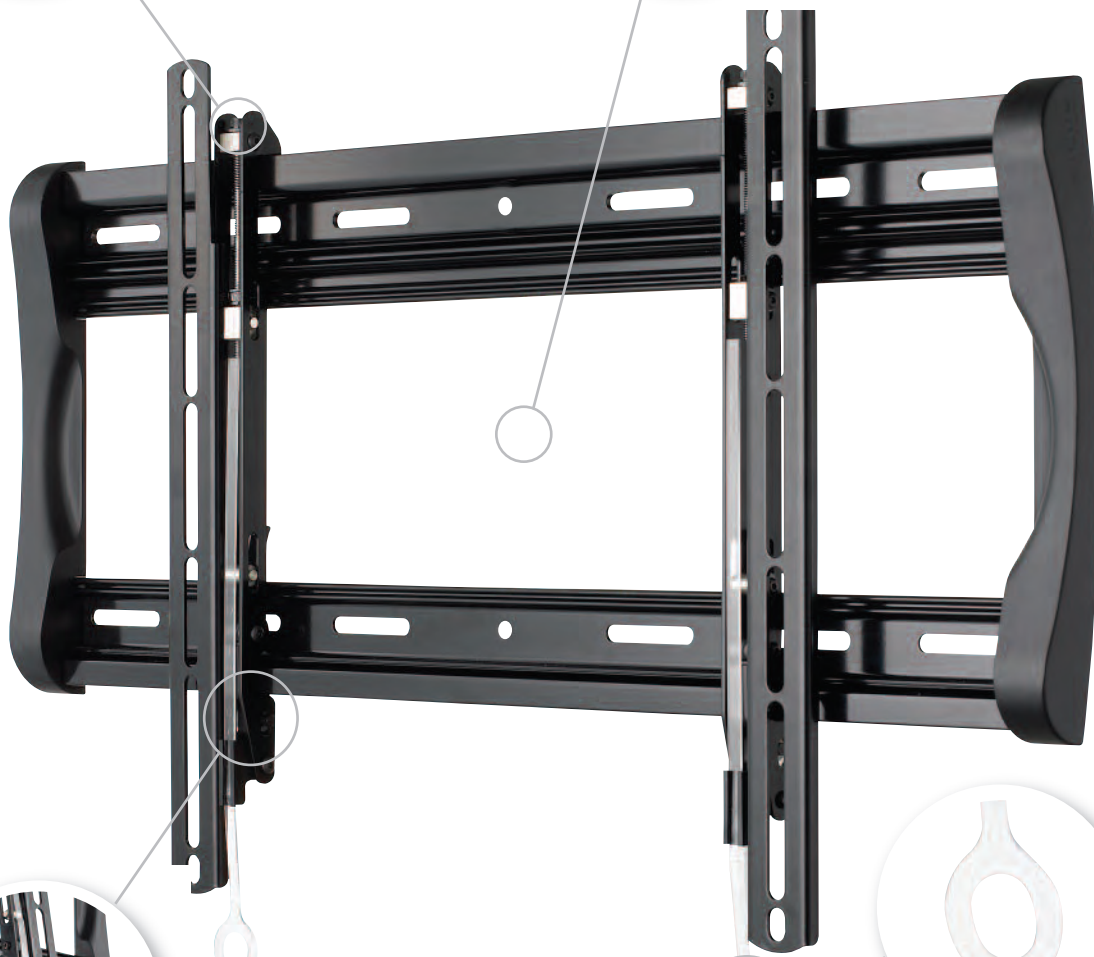
MODELLL22
 TV SIZE RANGE30" – 60"
 WEIGHT CAPACITY175 lbs.
AVAILABLENOW



ProSet™ height and level adjustments ensure TV is perfectly positioned, even after installation



ClickFit™ system allows surge suppressors and other accessories to snap onto mount, so they're hidden behind TV



ClickStand™ feature holds TV away from wall for easy cable installation, then clicks securely back onto wall plate

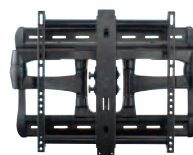


Quick-release tabs allow TV to unlock instantly from wall plate for easy installation

NEW VISIONMOUNT® FULL-MOTION MOUNTS

Extra-Large and Large Full-Motion Mounts

The LF228 and XF228 feature post-installation height and leveling adjustments, plus a major innovation: an in-arm cable management channel that even allows cables to run through the elbow for a truly flawless look. Our two new full-motion mounts come with pre-assembled interfaces, so they're easier than ever to install.



MODELXF228
TV SIZE RANGE.....37" – 63"
WEIGHT CAPACITY200 lbs.
EXTENSION24.75"
AVAILABLEQ4 2008



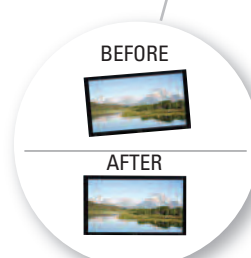
In-arm cable management channel protects and completely conceals all cables, even through the elbow



Virtual Axis™ tilting technology allows effortless viewing angle adjustment without the use of tools

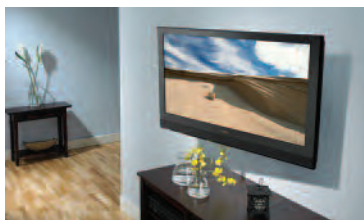


Open wall-plate design provides generous space for cable management



ProSet™ height and level adjustments ensure TV is perfectly positioned, even after installation

NEW VISIONMOUNT® FULL-MOTION MOUNTS



model XF228



model LF228



MODELLF228
 TV SIZE RANGE37" – 58"
 WEIGHT CAPACITY130 lbs.
 EXTENSION24.5"
AVAILABLEQ4 2008



Virtual Axis™ tilting technology allows effortless viewing angle adjustment without the use of tools



Open wall-plate design provides generous space for cable management



ProSet™ height and level adjustments ensure TV is perfectly positioned, even after installation

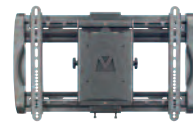


In-arm cable management channel protects and completely conceals all cables, even through the elbow

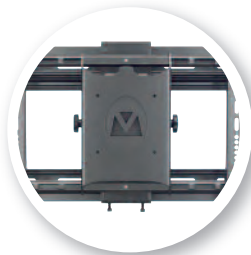
NEW VISIONMOUNT® MOTORIZED MOUNTS

Motorized Mounts

Change the viewing angle without leaving your seat with two new motorized mounts. The MMS18 and LMT15 feature fully automated movements by remote control, making adjustments a breeze.



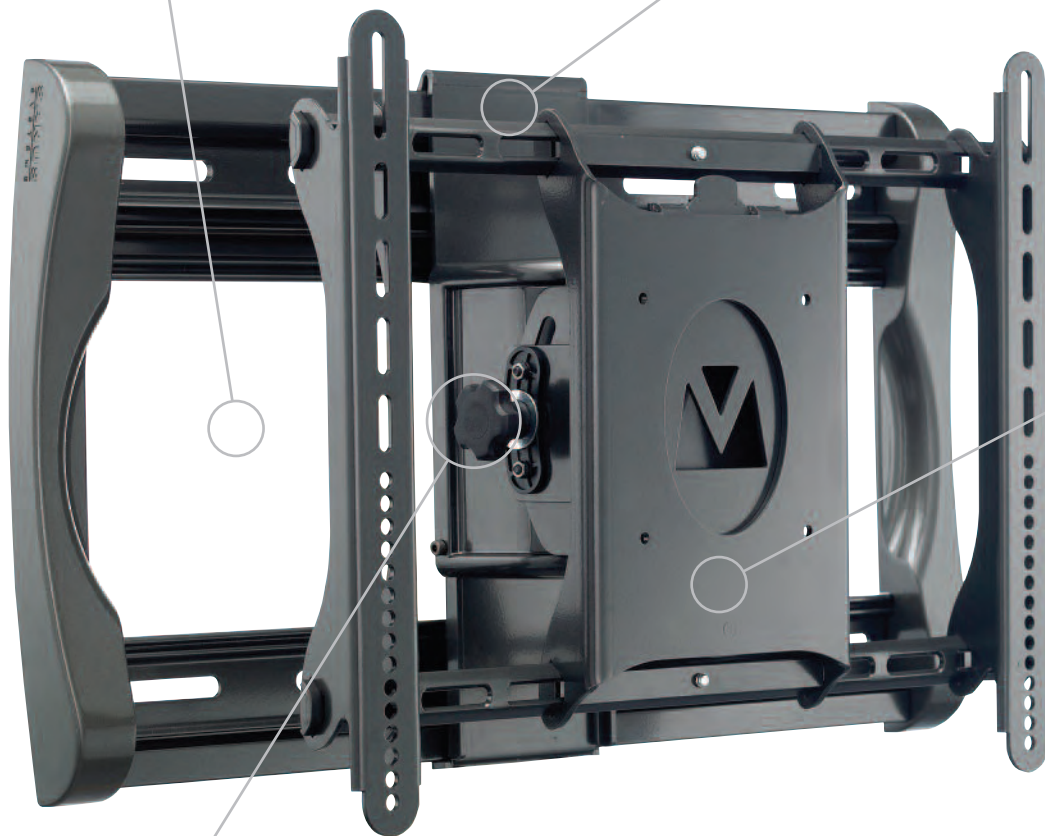
MODELMMS18-G1
TV SIZE RANGE26" – 46"
WEIGHT CAPACITY100 lbs.
AVAILABLEQ4 2008



Open wall-plate design allows flexibility for cable management



Safety sensors will stop movement instantly if object interference is detected



Motorized swivel motion creates "touch-free" movement

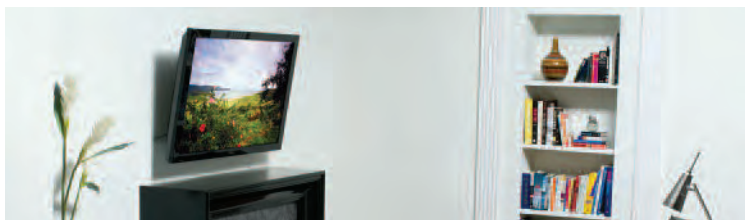


Virtual Axis™ technology allows manual tilt motion with the touch of a finger



IR remote control included

NEW VISIONMOUNT® MOTORIZED MOUNTS



model LMT15



MODELLMT15
 TV SIZE RANGE40" – 60"
 WEIGHT CAPACITY150 lbs.
 AVAILABLEQ4 2008



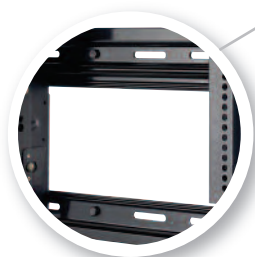
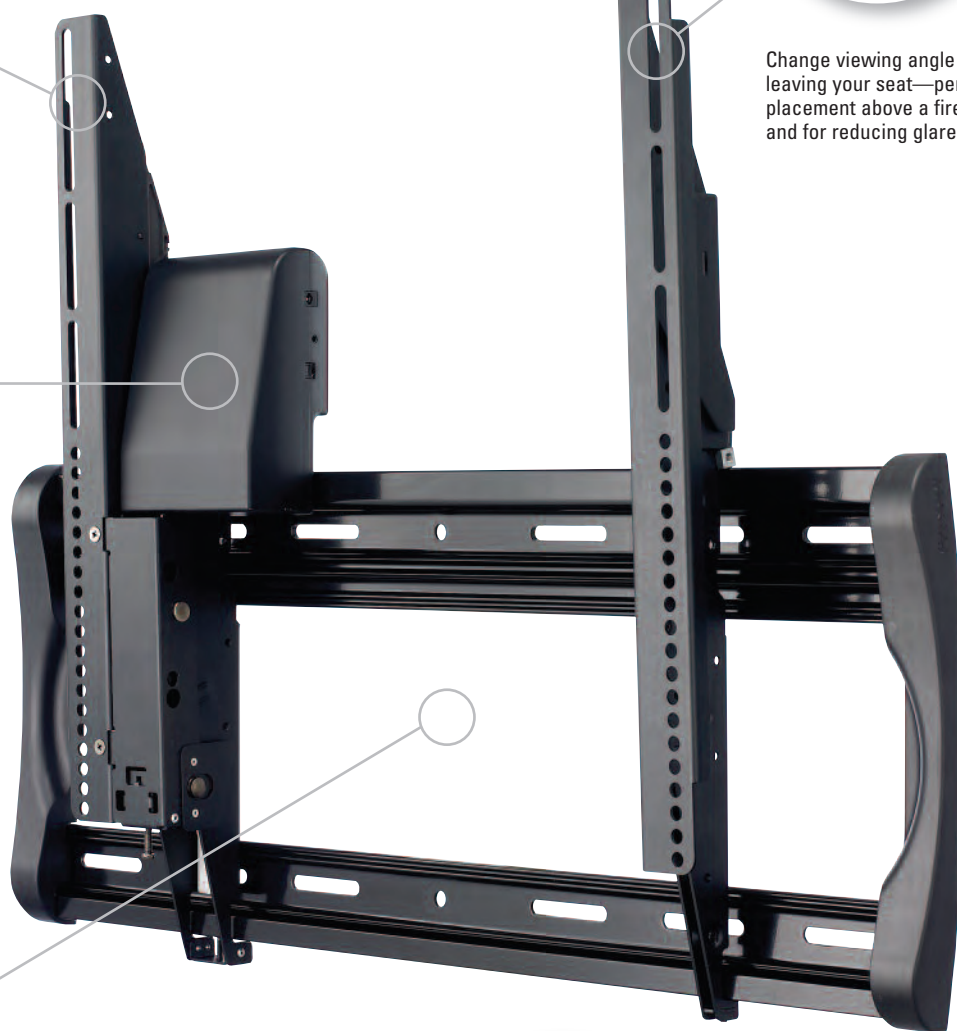
Automatically tilt to preset viewing angle when TV is turned on, or use remote control to position as desired



Change viewing angle without leaving your seat—perfect for placement above a fireplace and for reducing glare



Safety sensors will stop movement instantly if object interference is detected



Open wall-plate design allows flexibility for cable management



IR remote control included

NEW VISIONMOUNT® SMALL FULL-MOTION MOUNTS

Small Full-Motion Mounts

Our latest small full-motion wall mounts are the perfect space-saving solution for the home or office. The SF203, SF208 and SF213 feature Virtual Axis™ technology for effortless tilting motion, as well as in-arm cable management channels and post-installation level adjustments.



model SF208



MODELSF213
TV SIZE RANGEup to 27"
WEIGHT CAPACITY45 lbs.
AVAILABLENOW



MODELSF208
TV SIZE RANGEup to 27"
WEIGHT CAPACITY45 lbs.
AVAILABLENOW



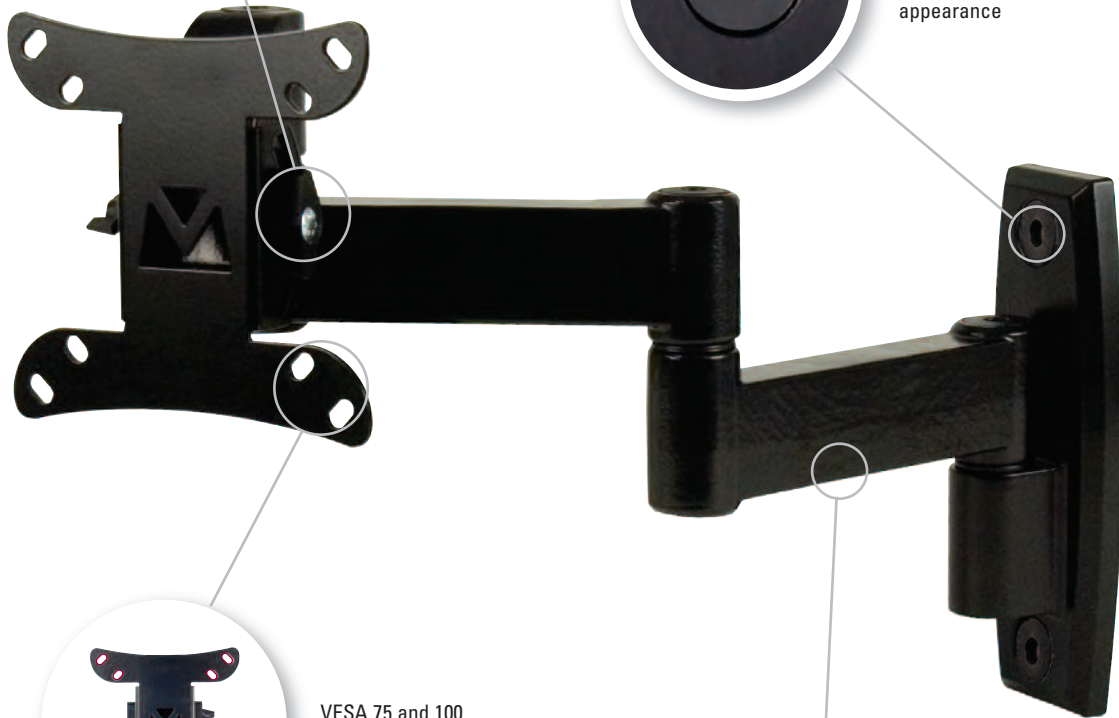
MODELSF203
TV SIZE RANGEup to 27"
WEIGHT CAPACITY50 lbs.
AVAILABLENOW



Virtual Axis™ tilting technology allows effortless viewing angle adjustment without the use of tools



Decorative caps conceal hardware for a finished appearance



VESA 75 and 100 compatible to fit most small LCD TVs

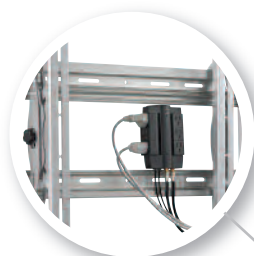


In-arm cable management channel conceals and routes cables

NEW SANUS ELEMENTS™ SURGE PROTECTORS

Give High-End Electronics Shelter from the Storm

Our surge protectors safeguard your valuable electronic equipment from power surges and lightning strikes. Their low-profile designs make them perfect for use behind wall mounts and furniture.



Less than 1.5" in depth — great for use behind flat-panel TV wall mounts and furniture



MODELELM202-B1
 DEPTH1.5"
 OUTLETS6
 AVAILABLENOW



MODELELM203-B1
 DEPTH1.37"
 OUTLETS4
 AVAILABLEDecember



MODELELM205-B1
 DEPTH1.37"
 OUTLETS3
 AVAILABLEDecember



Protects valuable electronic components from damaging power surges



Outlets swivel up to 90°, placing cables nearly flush against the wall



2,100-Joule protection and 330V clamping voltage for fast-acting surge protection

NEW SANUS ELEMENTS™ CABLE TUNNELS

Cable Tunnel Kits

Conceal and route even the most complex cable arrangements with new Sanus Elements™ cable tunnel kits. These easy-to-install 20" cable channels can be painted, cut and even routed around a corner.



model ELM302-W1



MODELELM301-W1

INCLUDES.....(3) 20" long wire channels
(1) 90° elbow
(6) Wall mounts and mounting hardware with concrete anchors
(2) Joining clips

AVAILABLEOctober



MODELELM302-W1

INCLUDES.....(2) 20" long wire channels
(2) 45° elbows
(4) Wall mounts and mounting hardware with concrete anchors
(1) Joining clip
(1) 90° inside corner
(1) 90° outside corner

AVAILABLEOctober



ABS channels can be painted and cut



Easy to install—simply attach wall mounts, fasten cables into place and snap tunnels onto mounts for a seamless look



Connects around an inside or outside corner



45° or 90° elbow allows flexibility in placement

NEW SANUS ELEMENTS™ SCREEN CARE

The Perfect Way to Clean Without Damaging Screens

Our special alcohol- and ammonia-free cleaning gel gently cleanses to maintain the quality of glass and flat-panel screens. Pair it with a lint-free microfiber cloth, wiping handle and antistatic brush to remove dust and fingerprints for a residue-free shine.



SCREEN CARE KIT
 MODEL.....ELM101-X1
AVAILABLENOW



SCREEN CLEANING GEL
 MODEL.....ELM102-X1
AVAILABLENOW



COMPACT SCREEN CARE KIT
 MODEL.....ELM104-X1
AVAILABLEDecember



Wiping handle applies even pressure to clean smudges, fingerprints and oils



Micro-Mist™ bottle provides anti-streak, anti-run spray



Carbon-fiber brush quickly removes dust and debris



Microfiber cloth will not leave behind lint or residue





Meet the next VMPL

Introducing the Sanus VisionMount® LT25

In 2002, Sanus Systems revolutionized the flat-panel TV industry with the VMPL — the first universal wall mount. And now, with the innovative new LT25, we're doing it again. This ultra-light mount is constructed of extruded aluminum and features an open wall-plate design for easy cable management. Our exclusive, patented ProSet™ technology makes installation so easy, it sets a new industry standard. Take a look at the amazing features the LT25 offers, then visit www.sanus.com for more information.



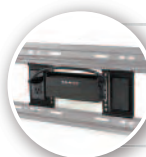
Height and Level Adjustments

ProSet™ feature ensures TV is perfectly positioned, even after installation

Problem: Mounted TV is not aligned with walls, windows or furniture



Solution: Use ProSet™ to perfectly align TV without redrilling



ClickFit™ System

Surge suppressors and other accessories snap onto the mount and are hidden behind TV



Easy Hookup

ClickStand™ feature holds TV away from wall for easy cable maintenance, then clicks securely back onto wall



Fingertip Tilting

Virtual Axis™ tilting technology allows effortless viewing angle adjustment without tools

SANUS | SYSTEMS™

www.sanus.com

Free Manuals Download Website

<http://myh66.com>

<http://usermanuals.us>

<http://www.somanuals.com>

<http://www.4manuals.cc>

<http://www.manual-lib.com>

<http://www.404manual.com>

<http://www.luxmanual.com>

<http://aubethermostatmanual.com>

Golf course search by state

<http://golfingnear.com>

Email search by domain

<http://emailbydomain.com>

Auto manuals search

<http://auto.somanuals.com>

TV manuals search

<http://tv.somanuals.com>