

NEW SANUS ELEMENTS™ HD POWER CONDITIONER AND SURGE PROTECTOR

Our flat-panel HD power conditioner and surge protector gives high-end electronics shelter from the storm

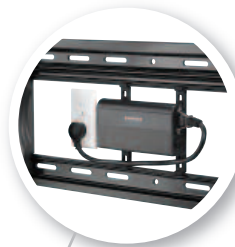
The Sanus Elements™ ELM205 is a flat-panel HD power conditioner and surge protector that sits just 1.31" from the wall, so it's perfect for use behind flat-panel TV wall mounts and furniture. Its innovative design includes ClickFit™ compatibility, allowing it to attach directly to select Sanus wall mounts for a flawless home theater installation. Combo Ethernet/phone jack supports up to 100Base-T connection speeds. Dual-stage EMI/RFI filters eliminate noise from 20-50 dB (100 kHz-1 MHz) for superior quality signals.



ELM205-B1 in use



Combo ethernet/phone jack — supports up to 100Base-T connection speeds



Only 1.31" in depth—great for use behind flat-panel TV wall mounts and furniture



ELM205-B1



Features ClickFit™ compatibility to attach directly to select Sanus wall mounts, easily concealing it behind the TV



Dual stage EMI/RFI filters eliminate noise from 20-50 dB (100 kHz-1MHz) for superior quality signals



www.sanus.com • 800.359.5520

NEW SANUS ELEMENTS™ HD POWER CONDITIONER AND SURGE PROTECTOR

MODEL: ELM205

DESCRIPTION

Flat-panel power conditioner and surge protector features ClickFit™ compatibility. Just 1.31" in depth, making it perfect for use behind wall mounts and furniture. Compatible with the LL22, LT25, and LMT15 mounts.

PRODUCT DIMENSIONS (w x d x h) / WEIGHT

7.7" x 1.3" x 3.6" / 2.1 lbs

19.6 x 3.3 x 9.1 cm / .95 kg

PACKAGE DIMENSIONS (w x d x h) / WEIGHT

6" x 1.75" x 11.75" / 2.1 lbs

15.2 x 4.4 x 29.8 cm / .95 kg

MASTER PACK QUANTITY

6

MSRP/MAP

\$99.99

- Only 1.31" in depth—great for use behind most flat-panel TV wall mounts and furniture
- Combo Ethernet/phone jack offers protection for CA75 cables up to T100 connection speeds
- Features ClickFit™ compatibility to attach directly to select Sanus wall mounts, easily concealing it behind the TV
- Dual stage EMI/RFI filters eliminate noise from 20-50 dB (100 kHz-1MHz) for superior quality signals
- Gold-plated terminals



ELM205-B1



Combo Ethernet/phone jack



Use behind wall mounts and furniture



Attaches directly to mount with ClickFit™



EMI/RFI filters eliminate noise



www.sanus.com • 800.359.5520

Free Manuals Download Website

<http://myh66.com>

<http://usermanuals.us>

<http://www.somanuals.com>

<http://www.4manuals.cc>

<http://www.manual-lib.com>

<http://www.404manual.com>

<http://www.luxmanual.com>

<http://aubethermostatmanual.com>

Golf course search by state

<http://golfingnear.com>

Email search by domain

<http://emailbydomain.com>

Auto manuals search

<http://auto.somanuals.com>

TV manuals search

<http://tv.somanuals.com>