

# ECO-i™ Submittal Data



Building Life.

## 07AHX52 Indoor Unit: 1 Way Air Discharge

Job Name: \_\_\_\_\_  
 Location: \_\_\_\_\_  
 Engineer: \_\_\_\_\_  
 Submitted to: \_\_\_\_\_  
 Submitted by: \_\_\_\_\_  
 Reference: \_\_\_\_\_

Approval: \_\_\_\_\_  
 Date: \_\_\_\_\_  
 Construction: \_\_\_\_\_  
 Unit #: \_\_\_\_\_  
 Drawing #: \_\_\_\_\_



**Parts Warranty: 1 Year**  
**Built in Drain Pump**  
**Washable Filter**  
**Wired, Wireless or Simple Remote Option**  
**Remote Sensor Option**

### Capacities

Cooling: Btu/h 7,500  
 Heating: Btu/h 8,500  
 Sensible Heat Ratio 0.74

### Cooling Mode Nominal Conditions

Indoor: °F DB/°F WB 80/67  
 Outdoor: °F DB 95  
 Pipe Length (feet): 25  
 Level Difference (feet): 0

### Heating Mode Nominal Conditions

Indoor: °F DB 70  
 Outdoor: °F DB/ °F WB 47/43  
 Pipe Length (feet): 25  
 Level Difference (feet): 0

### Refrigerant and Piping

Refrigerant Type: 410A  
 Metering Device (Electronic Expansion Valve): EEV  
 Liquid Piping (inches): 1/4  
 Gas Piping (inches): 1/2

### Condensate

Drain Piping (OD) Inches: 1.25

### Fan

Quantity/Type: Centrifugal  
 Fan Motor Output (W): 60  
 Drive: Direct  
 Airflow Rate (L/M/H): 212 / 247 / 282

### Power Supply

V/PH/Hz. 208 / 230 / 1 / 60  
 Minimum circuit Amps (MCA): Amps 15  
 Max. Overcurrent Protection (MOCP): 15  
 Nominal Power Input-Cooling (W): 48/50  
 Nominal Power Input-Heat (W): 44/46  
 Running Amps: 0.26/0.29

### Weight (lbs):

43

### Sound Data

Sound Level (H/M/L) 5' below unit: 33 / 31 / 29

### Coil

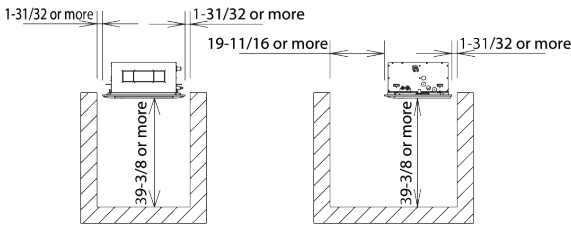
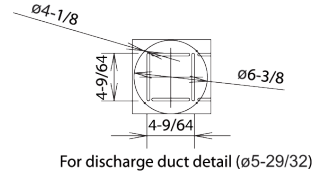
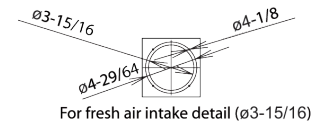
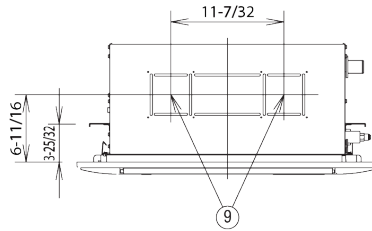
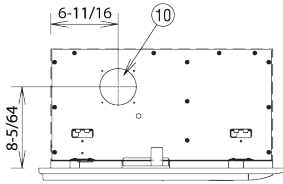
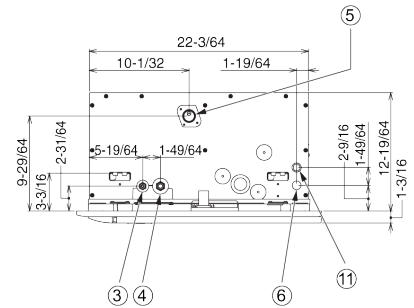
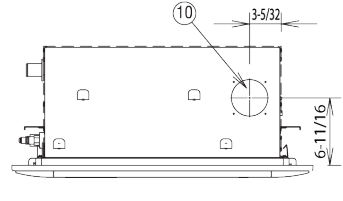
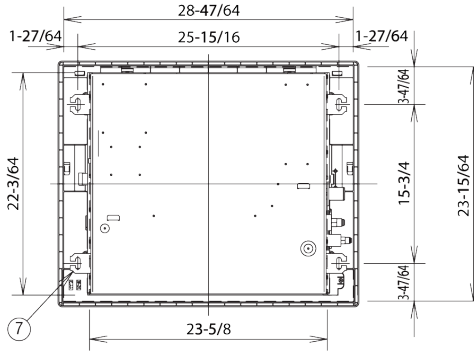
Coil Face Area (sq. ft.): 1.14  
 Number of Rows: 3

# ➔➔➔ Dimensions

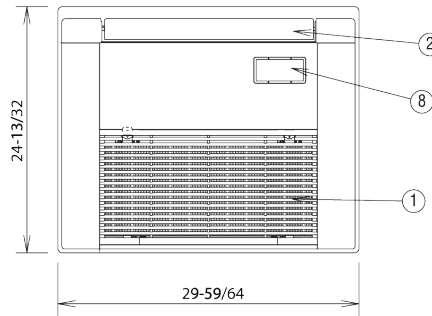
Indoor unit: 7, 9, 12 Type

- |   |  |
|---|--|
| ① | Air intake grille  |
| ② | Air outlet   |
| ③ | Refrigerant liquid line $\phi 1/4"$ ( $\phi 6.35$ ) (flare)              |
| ④ | Refrigerant gas line $\phi 1/2"$ ( $\phi 12.7$ ) (flare)                 |
| ⑤ | Drain connection VP25 (OD $\phi 1-1/4"$ )                                |
| ⑥ | Power supply outlet  |
| ⑦ | Suspension holes ( $\phi 4-15/32" \times 1-3/16"$ )                      |
| ⑧ | Wireless remote controller the reception department instation department |
| ⑨ | For discharge duct ( $\phi 5-29/32"$ )                                   |
| ⑩ | For fresh air intake ( $\phi 3-15/16"$ )                                 |
| ⑪ | Inter-unit control wiring  |

«Filter dimension»  
( $20-55/64" \times 9-31/64" \times 15/32"$ ) \* One



Required installation space



**SANYO**

Sanyo Commercial Solutions  
A Division of SANYO North America  
1300 Michael Drive  
Wood Dale, IL 60191 USA  
www.sanyohvac.com

## Free Manuals Download Website

<http://myh66.com>

<http://usermanuals.us>

<http://www.somanuals.com>

<http://www.4manuals.cc>

<http://www.manual-lib.com>

<http://www.404manual.com>

<http://www.luxmanual.com>

<http://aubethermostatmanual.com>

Golf course search by state

<http://golfingnear.com>

Email search by domain

<http://emailbydomain.com>

Auto manuals search

<http://auto.somanuals.com>

TV manuals search

<http://tv.somanuals.com>