



**INSTRUCTION MANUAL (Supplement)**

**DSR-5016PA**  
**DSR-5009PA**

**Digital Video Recorder  
with Multiplexer Function**

**GB Additions and changes to the Manual**

Parts of the manual have additions and changes as a result of revisions to the product specifications. Make sure to check this supplement for additions and/or changes when referring to the relevant pages in the manual.

<b>1 Additions and Changes to Main Unit Operating Procedures .....</b>	<b>2</b>
Supplementary Explanation on Image Search Times (P35 - 48/P169 - 174) .....	2
About Changes to the Copy Function's Standard Behavior (P50 - 55) .....	2
Changes to the Folder Hierarchy (P53, 57) .....	4
Forcible Interruption of Recording (P58) .....	5
Changes to the Display of Monitor 2 upon Alarm Detection (P104) .....	5
Improvements to the Image Quality Checks for the ROI Settings (P142) .....	6
About Support for Coaxial Control (P145) .....	6
Alarm Recording Trigger Settings (P145) .....	6
How to Register Preset Positions (P147) .....	7
<b>2 Additions and Changes to Network Operations .....</b>	<b>8</b>
Changes to the "Copy to Archive Area" Function's Standard Behavior (P174) .....	8
Support for Multi-channel Download (P175) .....	9
Alarm Recording Trigger Settings (P202) .....	9
Newly Added Alarm Notification Menus (P201) .....	10
<b>3 DVR Viewer2 Operation Guide (P205 - 210) .....</b>	<b>11</b>
Before Using DVR Viewer2 .....	11
Structure of the Screen and the Function of each Section .....	12
Opening Image Files .....	13
Switching the Display Pattern of the Screen .....	14
Selecting the Channel Displayed on the Screen .....	14
Functions of the Viewer Operating Panel .....	15
Saving and Printing Images.....	16
Setting the Date and Time Display Format .....	16
<b>4 Other Additions and Changes .....</b>	<b>17</b>
About Specifications (P213) .....	17
About Terminal Board Specifications (P219) .....	17
OpenSSL License .....	17

Numbers in parentheses indicate the corresponding pages in the instruction manual.

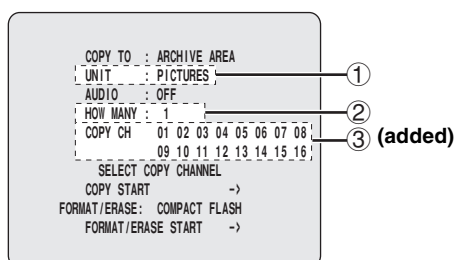
### Supplementary Explanation on Image Search Times (P35 - 48/P169 - 174)

When you use the image search function directly from the main unit or via the network operation search menu, it may take one or more minute for the search function to return results depending on the available hard disk space and the amount of the recorded data.

### About Changes to the Copy Function's Standard Behavior (P50 - 55)

#### 1 Changes to the basic configuration menu (P50, 52, 54)

When you press the [COPY] button with a still image displayed, you are first presented with the copy setting screen. Note that the menus on this screen have been changed as follows:



#### 1 Support added for event-by-event copying

When copying from the archive area, you can now use the "EVENTS" option added to the "UNIT" setting item. By choosing "EVENTS", you can copy as many images as your specified events.

Use the "HOW MANY" item to specify the number of events within the range of 1 to 99.

#### 2 Upper limit raised for saved copies

Now you can specify more copies than in the previous release using the "HOW MANY" item with "UNIT" set to "PICTURES":

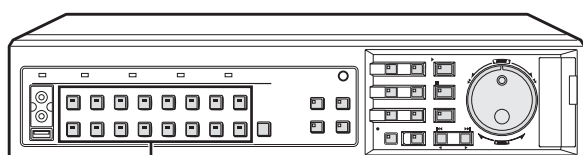
**Previous release: 1 to 60 copies**

**Current release: 1 to 99 copies**

#### 3 Support added for multi-channel copying

Now you can copy video simultaneously from multiple channels.

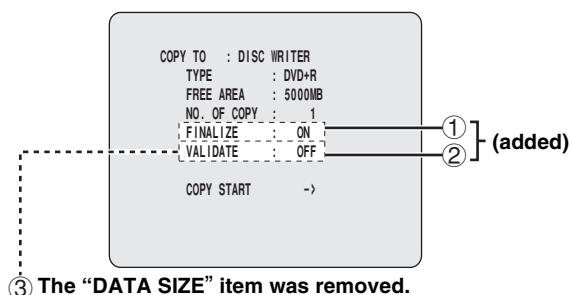
A channel selection menu has been added to the copy setting screen. Select your desired channels using the [CAMERA SELECT] buttons on the front panel.



[CAMERA SELECT] buttons

#### 2 About copying to an external disc (P54)

New menus are added that appear when "COPY TO" is set to "DISC WRITER". Also, there are changes to the disc detail screen, which appears upon start of copying.



#### 1 Support added for multi-session writes to the same medium

Now you can use a new menu that allows you to turn on or off the "FINALIZE" setting.

You can enable multi-session writes to the same medium by setting "FINALIZE" to "OFF".

[Settings] (◆ indicates default setting)

Setting	Description
◆ ON	Finalizes the disc (disables multi-session writes).
OFF	Does not finalize the disc (enables multi-session writes).

#### ! CAUTION

- You can carry out up to 99 write sessions to a CD-R/ DVD+R, or up to 99 write sessions within the same date to a CD-RW/DVD+RW.
- Copying data requires at least 20MB of free space on a disc.
- When the copy destination is a DVD+RW, the "FINALIZE" setting is fixed to "OFF".
- Data copied to a DVD+R in multi-session mode can only be retrieved under environments that satisfy the following:

##### Drive:

Drive with DVD multi-session/multi-border retrieval support

##### OS:

Windows 2000 (with SP3 or later), Windows XP

## ② Disc verification

Now you can use a new menu for disc verification.  
You can verify and compare your disc during copying.

[Settings] (◆ indicates default setting)

Setting	Description
◆ OFF	Does not verify or compare the disc.
VERIFY	Verifies the disc to make sure that the data residing on it can be retrieved.
VERIFY+COMPARE	Both verifies and compares the disc to make sure that the data written onto the target disc is identical to that on the source disc.

### NOTE

- When an error is detected during disc verification, you are presented with a warning message that states either "VERIFY ERROR" or "COMPARE ERROR". Chances are that your medium is defective or corrupted; replace it with a new disc and try again.
- Warning messages can be dismissed by pressing any button on the front panel or turning the jog or shuttle dial.

## ③ Removal of the DATA SIZE item

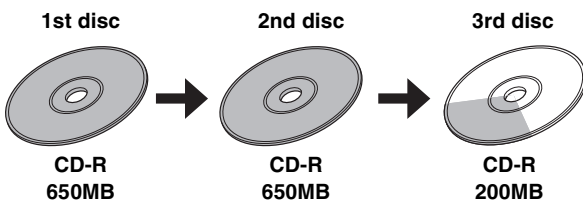
When the copy destination is "DISC WRITER", the "DATA SIZE" item no longer appears; this change is intended to improve the performance.

## ③ Support for copying across multiple discs (P54)

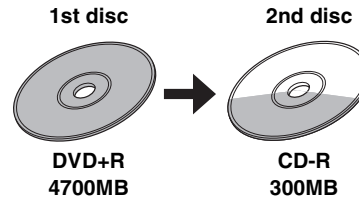
There are occasions when your data does not fit into one disc. Now you can successively copy the remaining data to new discs in such cases.

When the current disc becomes full, the disc tray is automatically ejected and you are prompted to replace the disc with a new one.

**Example 1:** This example illustrates how 1500MB data can be copied across three CD-R (650MB) discs:



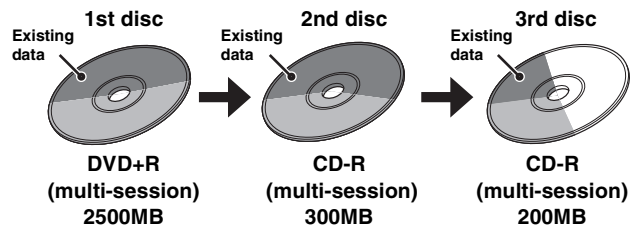
**Example 2:** This example illustrates how 5000MB data can be copied to DVD+R (4700MB) and CD-R (650MB) discs (one each):



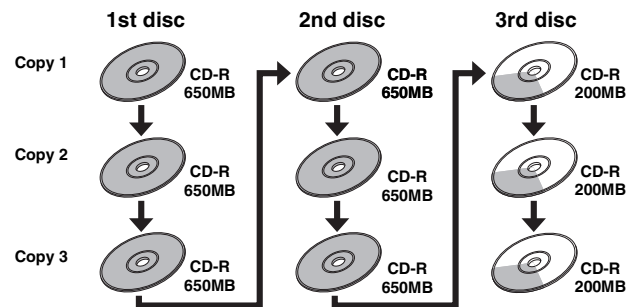
### NOTE

Support for copying across multiple discs is available regardless of the target medium type (DVD or CD).

**Example 3:** This example illustrates how 3000MB data can be multi-session written onto one DVD+R (with 2500MB free space), CD-R (with 300MB free space), and CD-R (with 500MB free space):



**Example 4:** This example illustrates how 1500MB data can be copied to 9 CD-R discs (650MB each) with "NO. OF COPY" set to 3:



### CAUTION

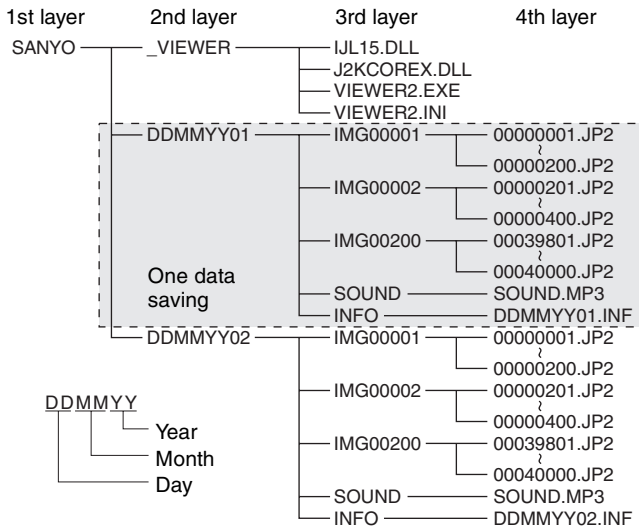
When you copy data across multiple discs with "NO. OF COPY" set to a number larger than 1:

- All discs must be blank. This feature does not support multi-session writes.
- Second and subsequent copies must be written onto discs that are in capacity equal to or larger than the disc for the first copy.

### Changes to the Folder Hierarchy (P53, 57)

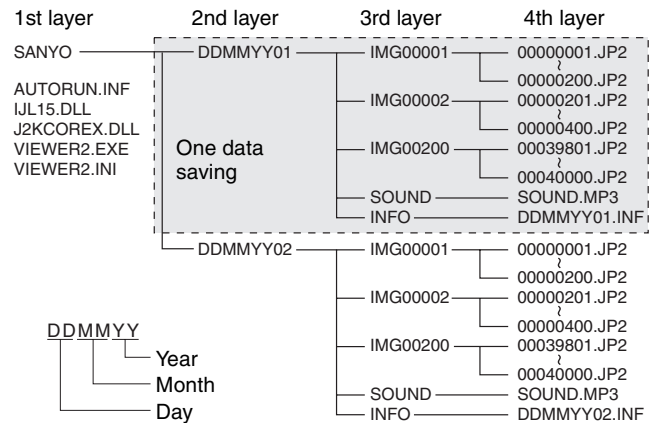
The following changes have been added to the folder hierarchy:

#### 1 Folder hierarchy for data copied onto a CompactFlash card (P53)



1. The first layer consists of a single folder named "SANYO", under which a number of session-specific folders are created as the second layer.
2. The second layer consists of a number of session-specific folders that are named in this format: DDDMMYY (the recording date for the first image copied in the copy session) followed by a two-digit serial number.
3. The third layer consists of a number of image storage folders that are named in this format: IMG followed by a 5-digit serial number. Each of these folders can contain up to 200 image files that make up the fourth layer.
4. For image files with sound, the corresponding MP3 files are stored in the "SOUND" folder.
5. The "INFO" folder is created on a session by session basis, and it contains configuration information files.
6. As part of the second layer, a folder named "VIEWER" is created, and it contains viewer-related files including "I JL15.DLL", "J2KCOREX.DLL", "VIEWER2.EXE", and "VIEWER2.INI".

#### 2 Folder hierarchy for data copied onto a CD-R/RW or DVD+R/RW (P57)



1. The first layer consists of a single folder named "SANYO", under which a number of session-specific folders are created as the second layer.
2. The second layer consists of a number of session-specific folders that are named in this format: DDDMMYY (the recording date for the first image copied in the copy session) followed by a two-digit serial number.
3. The third layer consists of a number of image storage folders that are named in this format: IMG followed by a 5-digit serial number. Each of these folders can contain up to 200 image files that make up the fourth layer.
4. For image files with sound, the corresponding MP3 files are stored in the "SOUND" folder.
5. The "INFO" folder is created on a session by session basis, and it contains configuration information files.
6. Viewer-related files including "AUTRUN.INF", "I JL15.DLL", "J2KCOREX.DLL", "VIEWER2.EXE", and "VIEWER2.INI" are directly placed in the first layer.

### Forcible Interruption of Recording (P58)

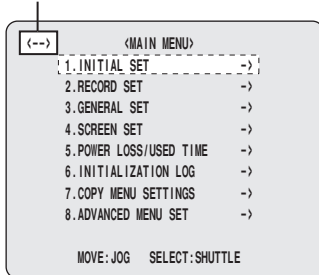
Now you can forcibly interrupt the current recording session while the <MAIN MENU> screen is displayed. Using this feature, you can change the menu settings without changing the current recording conditions.

#### ● To interrupt the current recording session:

Press and hold the [SHUTTLE HOLD] button for about 3 seconds.

☞ The recording indicator turns off, and all the recording mechanisms (normal, timer, and alarm) are switched to pause mode. During pause, you can change the menu settings.

**While the recording session is paused, a <--> mark is displayed on the menu screen.**



#### ● To exit from pause mode:

Press the [EXIT/OSD] button.

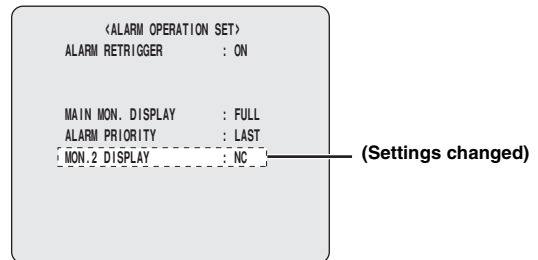
☞ You are returned to the same recording status as before you paused the recording session.

### ! CAUTION

- While recording is paused, the DVR does not accept any new recording command.
- If, with the recording session paused, you have uploaded a menu setting file or a power failure has occurred, the DVR does not resume the previous recording status.

### Changes to the Display of Monitor 2 upon Alarm Detection (P104)

The following changes have been added to the "MON.2 DISPLAY" item on the <ALARM OPERATION SET> screen under "RECORD SET".



[Settings] (◆ indicates default setting)

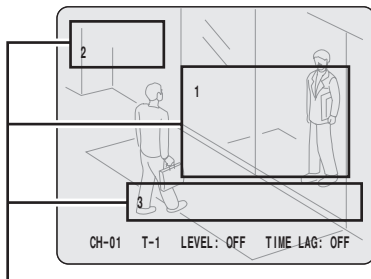
Setting	Description
◆ NC	When an alarm is detected, the main monitor does not change.
<b>SWITCH (added)</b>	When a number of alarms occur, the display switches between the video from the corresponding cameras, showing each for one second.
9	When an alarm is detected, the main monitor appears in multi 9 screen display.
16	When an alarm is detected, the main monitor appears in multi 16 screen display.
<b>LAST (added)</b>	When a number of alarms occur, the most recent alarm video is given priority and is displayed.
<b>FIRST (added)</b>	When a number of alarms occur, only the video for the first alarm is displayed. However, if the duration for the first alarm expires, video for the next alarm is displayed.

### Improvements to the Image Quality Checks for the ROI Settings (P142)

Now the ROI SET configurations made under “ADVANCED MENU SET” are directly applied to the <AREA/ SENSITIVITY SET> screen.

On the <ROI SET> screen, set the picture quality in “STATIC AREA”. Then move the cursor to “AREA/ SENSITIVITY SET”, and turn the shuttle dial clockwise. You can check the new picture quality as it is applied to the actual image.

<AREA/SENSITIVITY SET> screen



Your new picture quality setting is applied to the actual image displayed in the “STATIC AREA”.

#### NOTE

- The <AREA/SENSITIVITY SET> screen displays an image in the recording mode configured in “EFFECTIVE REC MODE”. When it is set to “NORMAL/ALARM”, the screen displays an image in normal recording mode.
- You cannot check the picture quality on the <AREA/ SENSITIVITY SET> screen while recording is in progress or prealarm recording is in effect.

### About Support for Coaxial Control (P145)

Now the camera control mechanism supports “AUX” commands for BBV coaxial control.

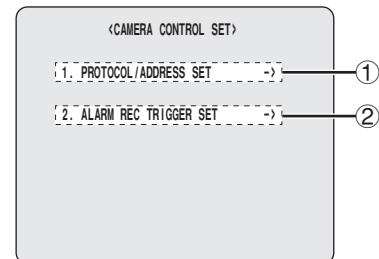
Command	Operation
AUX1	Turns on/off the light.
AUX2	Turns on/off the wiper.
AUX3	Turns on/off the washer.

### Alarm Recording Trigger Settings (P145)

The camera control mechanism provides a new feature that allows you to configure what camera action is triggered by alarm detection. For example, you can automatically change the camera lens orientation or initiate an automatic panning or tour operation in response to alarm detection. To configure the settings, follow these steps:

#### 1 Display the <CAMERA CONTROL SET> screen under “ADVANCED MENU SET”.

The following changes have been added to this screen.



#### ① PROTOCOL/ADDRESS SET

This item has been renamed from “CAMERA CONTROL SET,” however, the screen operation method remains the same.

#### ② ALARM REC TRIGGER SET

This menu has been newly added for configuring alarm recording trigger settings.

#### 2 Choose “ALARM REC TRIGGER SET”, and configure the triggered action for each camera in the “ACTION” column.

<ALARM REC TRIGGER SET>	
CH ACTION	CH ACTION
01 OFF	09 -----
02 PRESET 2	10 -----
03 PRESET 3	11 -----
04 PRESET 9	12 -----
05 PAN	13 -----
06 TOUR	14 -----
07 SEQUENCE	15 -----
08 OFF	16 -----

[Settings] (◆ indicates default setting)

Setting	Description
◆ OFF	No action triggered.
PRESET	Moves the camera lens to the angle corresponding to your selected preset number.
PAN	Starts automatic panning.
TOUR	Starts tour.
SEQUENCE	Starts sequence.

#### NOTE

- You can configure presets 2 to 9 for a 9-channel model or presets 2 to 16 for a 16-channel model.

### 3 Press the [EXIT/OSD] button.

New settings are saved, and you are returned to the normal screen.

#### CAUTION

- Before configuring trigger actions, be sure to configure the settings under "ALARM REC MODE SET" and "PROTOCOL/ADDRESS SET".
- In the case more than one camera has issued an alarm simultaneously, some or all trigger actions may fail to operate correctly because only one camera can be operated at a time.
- Actually available actions depend on each camera. For more information, refer to the camera's instruction manual.

#### How to Register Preset Positions (P147)

To register preset positions that are applied during camera control, follow these steps:

### 1 Press the [FUNC.] button (①).

The FUNC. indicator lights up in blue to indicate that you are now in camera control mode.

### 2 Set the camera lens orientation.

Adjust the lens to your desired orientation using the pan/tilt functions.

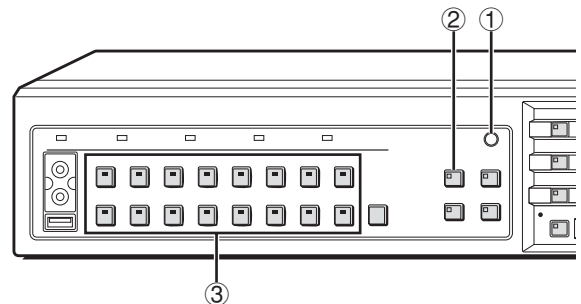
### 3 Press and hold the [PRESET] button (②) for about 3 seconds.

The buzzer beeps twice and the button indicator flickers (at 4Hz) to indicate that you are now in preset registration mode.

### 4 Press one of the [CAMERA SELECT] buttons (③) to specify the channel number for the camera.

The button stops flickering, and the camera lens orientation at the time of button press is registered as the preset position.

Repeat steps 2 and 3 above to register the preset positions for other cameras.



#### NOTE

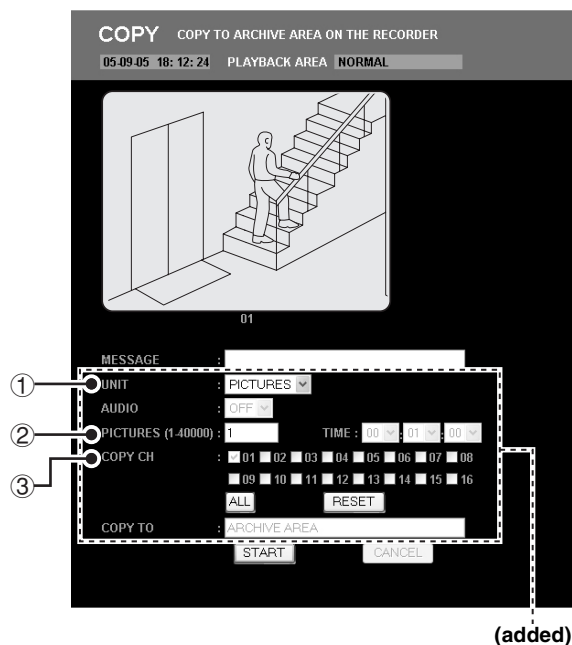
- Each preset number is associated with a specific channel number.

**For example, CH02 corresponds to PRESET 2.**



## Changes to the “Copy to Archive Area” Function's Standard Behavior (P174)

Now you can navigate through the “COPY” screen menus and configure basic settings the same way as when you download images.



(added)

### 1 Changes to the “COPY” screen menus (P174)

#### ① Support added for time-based copy ranges

Now you can specify the image copy range as a time-based range. To do so, choose “TIME” from “UNIT”.

[Settings] (◆ indicates default setting)

Setting	Description
◆ PICTURES	Specifies the copy range in terms of the number of images. In “PICTURES”, specify the number of images.
TIME	Specifies the copy range as a time-based range. In “TIME”, specify your desired time.

#### ② Upper limit raised for the number of copies

Now you can use “PICTURES” to specify more copies than in the previous release.

**Previous release: 1 to 10000**

**Current release: 1 to 40000**

#### ③ Support added for multi-channel copying

Now you can copy simultaneously video from multiple channels.

A menu for configuring channel settings has been added to the “COPY” screen. Select the check boxes that correspond to your desired channels.

- **ALL**:  
Selects all channels.
- **RESET**:  
Deselects all channels except the currently displayed channel.

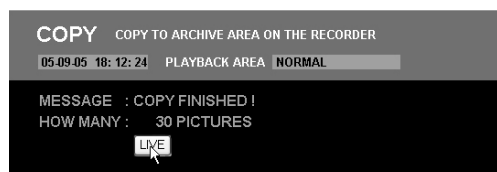
#### NOTE

- The check box for the currently displayed channel is selected by default and cannot be deselected.
- The following items are fixed to particular settings and cannot be selected.
  - **AUDIO: OFF**
  - **COPY TO: ARCHIVE AREA**

### 2 Copy result dialog display (P174)

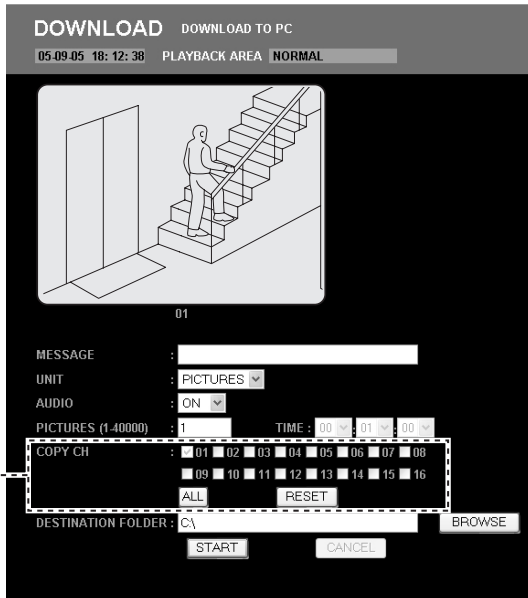
Upon completion of the copy operation you initiated by clicking the [START] button, you are presented with a copy result dialog similar to one that is displayed upon completion of download.

When you click the [LIVE] button, you are returned to live video.



### Support for Multi-channel Download (P175)

Now you can download video simultaneously from multiple channels.



(added)

A menu for configuring channel settings has been added to the "DOWNLOAD" screen. Select the check boxes that correspond to your desired channels.

- **ALL** :  
Selects all channels.
- **RESET** :  
Deselects all channels except the currently displayed channel.

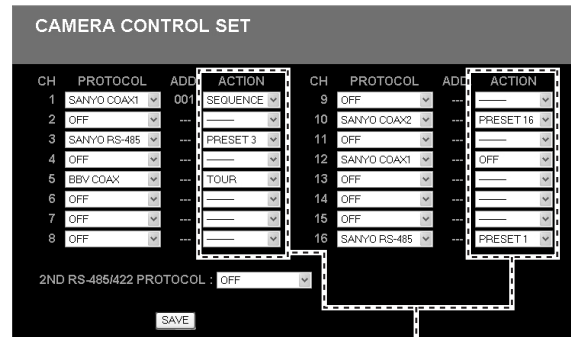
#### NOTE

- The check box for the currently displayed channel is selected by default and cannot be deselected.

### Alarm Recording Trigger Settings (P202)

The camera control mechanism provides a new feature that allows you to configure what camera action is triggered by alarm detection. For example, you can automatically change the camera lens orientation or initiate an automatic panning or tour operation in response to alarm detection.

A menu for configuring alarm recording trigger actions (the ACTION menu) has been added to the "CAMERA CONTROL SET" screen under "ADVANCED MENU SET". Use this menu to configure the trigger action for each camera.



(added)

[Settings] (◆ indicates default setting)

Setting	Description
◆ OFF	No action triggered.
PRESET	Moves the camera lens to the angle corresponding to your selected preset number.
PAN	Starts automatic panning.
TOUR	Starts tour.
SEQUENCE	Starts sequence.

#### NOTE

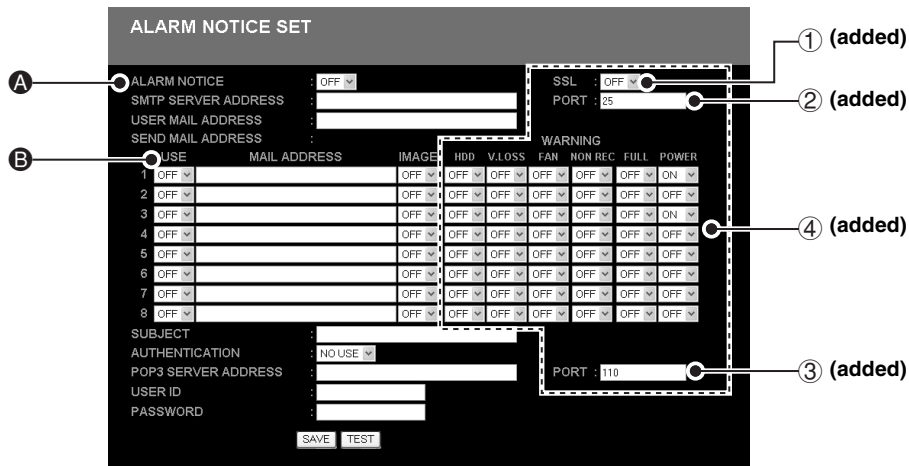
- You can configure presets 2 to 9 for a 9-channel model or presets 2 to 16 for a 16-channel model.

#### CAUTION

- Actually available actions depend on each camera. For more information, refer to the camera's instruction manual.

### Newly Added Alarm Notification Menus (P201)

The following menu items have been added to the “ALARM NOTICE SET” screen under “ADVANCED MENU SET”. These menu items are not available on the DVR side.



#### ① Support for SSL communications

Now you can send alarm notifications via SSL communications.

[Settings] (◆ indicates default setting)

Setting	Description
◆ OFF	Disables SSL support.
ON	Enables SSL support.

#### ② Specifying the SMTP port number

Enter a port number you want to use for SMTP (send) within the range of 0 to 65535. (Default: 25)

#### ③ Specifying the POP3 port number

Enter a port number you want to use for POP3 (receive) within the range of 0 to 65535. (Default: 110)

#### ④ Sending warning notifications

You can configure the main unit to send warning notification mail messages when the following problems are detected in the functionality and operation of the main unit.

You can configure the warning notification feature the same way as the alarm notification feature. All settings default to “OFF”; turning “ON” an item causes the main unit to send warning mail when the corresponding condition is detected.

##### ● HDD:

The hard disk is faulty.

##### ● V. LOSS:

The video signal is disconnected.

##### ● FAN:

The fan is faulty.

##### ● NON REC:

The DVR has stopped recording.

##### ● FULL:

Any one of the recording areas on the hard disk has reached the “remaining-space” warning level or has become full.

##### ● POWER:

The power has turned off and back on again.

#### NOTE

- When you want to use the warning notification feature, choose “ON” in the “ALARM NOTICE” column **A**.
- The “USE” column **B** controls the settings for alarm notification, and does not affect the warning notification feature. Regardless of the settings in the “USE” column, notifications with “ON” settings are in effect.

## Before Using DVR Viewer2

DVR Viewer2, a playback-dedicated application, has been upgraded to Ver.2 with support added for multi-channel playback. Use this section as your guide to DVR Viewer2 instead of the instruction manual provided in a separate volume when you use DVR Viewer2 to play back the video and sound saved on an external medium such as a computer hard disk, CompactFlash card, CD-R/RW, or DVD+R/RW.

### ● Operating Environment

Environment to be used

- **CPU:** Pentium® IV (2 GHz) or higher
- **RAM:** 256 MB or more (512 MB or more recommended)
- **Compatible OS:** Windows 2000/XP
- **Compatible machines:** PC/AT machines operating with the above OS
- **Display:** Color (XGA 65536-color or higher recommended)
- **Audio:** Sound card and speakers compatible with DirectX
- **Available languages:** English or Japanese
- **Supported formats:** JPEG2000 (image), MP3 (sound)

### ● Installing the Viewer Software

Follow the procedure below to install the software before using it.

#### 1 Insert the included CD-ROM in the computer CD-ROM drive.

Or, if you have downloaded the latest release of DVR Viewer2, decompress the compressed installation file.

#### NOTE

- You can download the most recent version of the software from our homepage.  
Homepage address  
<http://www.sanyosecurity.com>

#### 2 Double click the installer icon.

The installer runs.

#### 3 Select the language to be used for install and the install destination following the instructions of the installer.

The software starts installing.

#### 4 Click [Finish] once the install is complete.

Once the “DVR Viewer2” is fully installed, a shortcut icon appears on the desktop.

#### NOTE

- When writing data from the DVR onto a CompactFlash card or a CD-R/RW, DVD+R/RW, “DVR Viewer2” is copied to the save destination.

#### ! CAUTION

- If an earlier version of Viewer software is installed on the computer, before installing the present software, uninstall the earlier version using [Add or Remove Programs] under the control panel.

### ● Internet Option Settings

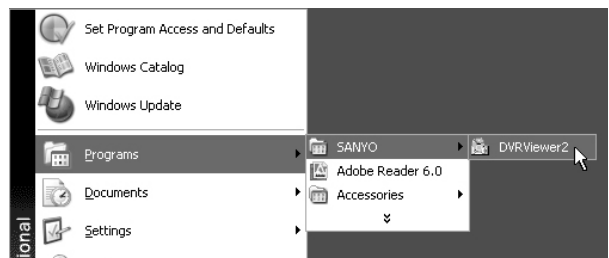
Once the “DVR Viewer2” is fully installed, select Internet Explorer, [Tools] → [Internet Options] → [Security].

If you click the [Custom Level] in the [Security] setting screen, the [Security Settings] dialog pops up. Enable the “ActiveX controls plug-ins”.

### ● Running and Quitting Viewer

#### 1 Running DVR Viewer2.

To run Viewer, double click the shortcut icon on the desktop or choose [Programs] → [SANYO] → [DVR Viewer2] from the start menu.

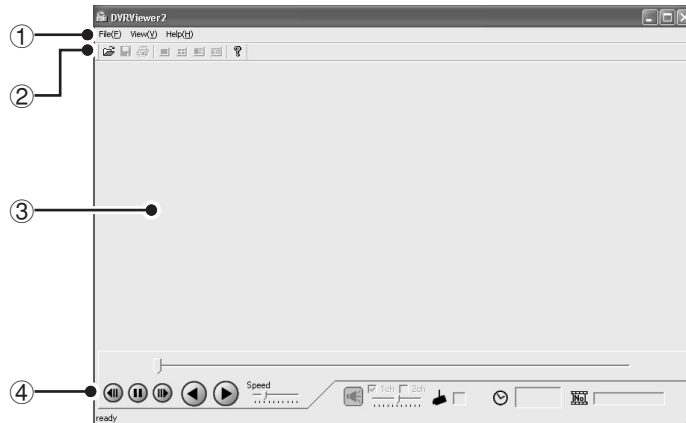


#### 2 To quit Viewer.

To quit Viewer, click [Exit] from the file menu or click the (X) button situated in the top-right corner of the screen.

**Structure of the Screen and the Function of each Section**

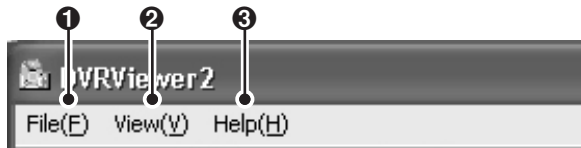
Running the Viewer software will result in the initial screen of the Viewer being displayed.



**Initial screen**

**1 Menu bar**

This is the basic menu of the Viewer software. Click each menu to display the breakdown of each command.



**1 File menu**

- Open:**  
The [Open] dialog is displayed.
- Save:**  
To save playback still images.
- Print:**  
To print playback still images.
- Title Input:**  
To display the dialog that allows you to input the title of the print image.
- Exit:**  
To quit the Viewer software.

**2 View menu**

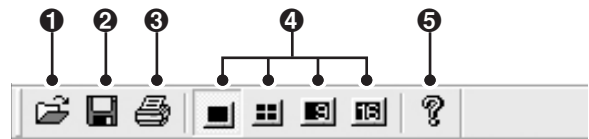
- Toolbar:**  
To show/hide the toolbar.
- Status bar:**  
To show/hide the status bar.
- Camera Title:**  
To show/hide the camera title.
- Date Display Format:**  
To set the date display format. (Refer to P16)
- Time Display Position:**  
You can position the date and time display (bottom-right/top-right/top-left/bottom-left) on the playback images.
- Image:**  
To specify the display pattern of the screen (1/4/9/16 screen). (Refer to P14)

**3 Help**

To display the version of the Viewer software.

**2 Toolbar**

Frequently used command bars are deployed.



- 1** To display the [Open] dialog.
- 2** To save playback still images in the bitmap format.
- 3** To print playback still images.
- 4** To switch the display pattern of the screen (1/4/9/16 screen).
- 5** To display the version of the Viewer software.

**3 Viewer screen**

The images of the loaded image files are displayed. Right clicking on the screen will display the context menu, which allows you to select the display pattern of the screen (1/4/9/16 screen) and the display channel.

**4 Viewer operating panel**

It operates the playback of the images that are displayed on the Viewer screen. (Refer to P15)

**Opening Image Files**

The image files are not displayed when the Viewer Software is run. Specify and open the playback file through the procedure below.

**1 Click  in the toolbar.**

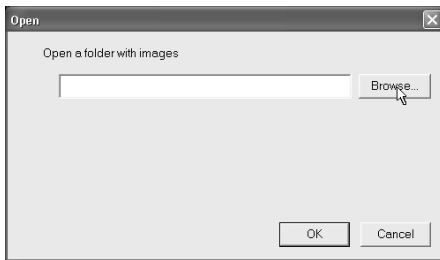
Or, click "Open" in the file menu.

The [Open] dialog is displayed.



**2 Click .**

The [Browse for Folder] dialog is displayed.



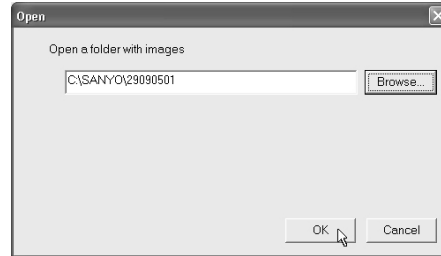
**3 Specify the folder in which the images are saved and click [OK].**

The folder specified in the [Open] dialog is displayed.



**4 Verify the displayed folder and click [OK].**

The image file loads.



**5 Screen display**

The first image of the loaded file is initially displayed on full screen.

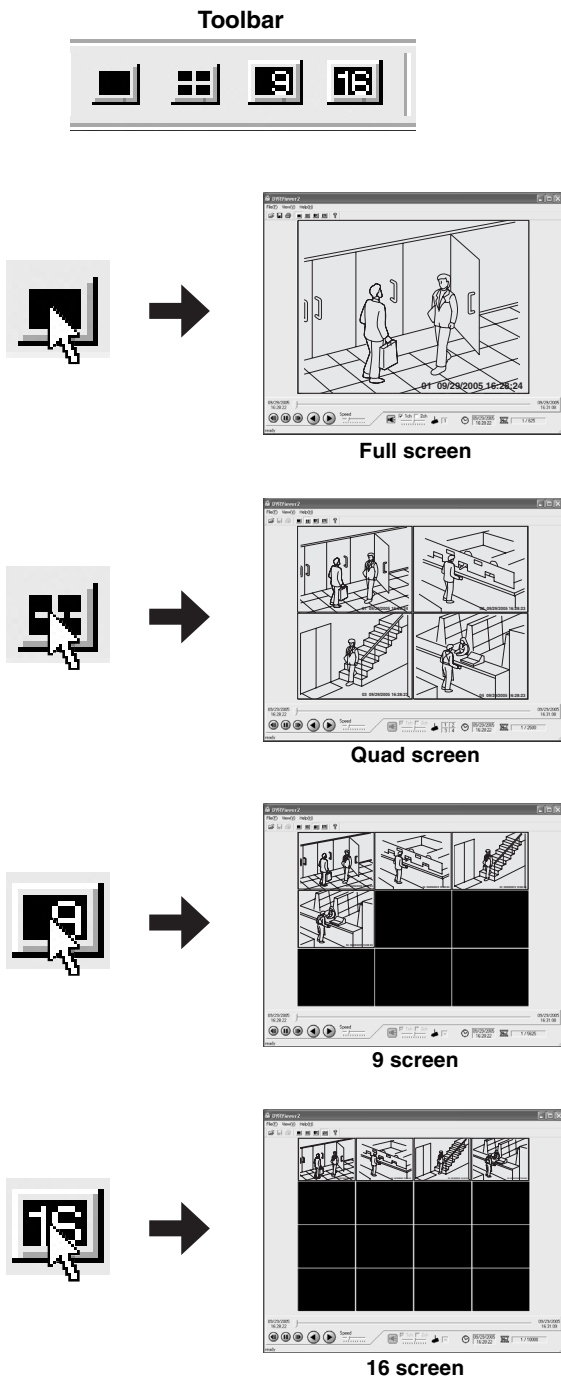


Refer to the appropriate pages for details about the operations of the Viewer Screen.

- Switching the display pattern (1/4/9/16 screen) of the playback images (Refer to P14)
- Selecting the channels displayed on each screen (Refer to P14)
- Operating panel functions (Refer to P15)

### Switching the Display Pattern of the Screen

The image display pattern can be selected from 4 patterns: full screen, quad screen, 9 screen, 16 screen using the toolbar button.



#### NOTE

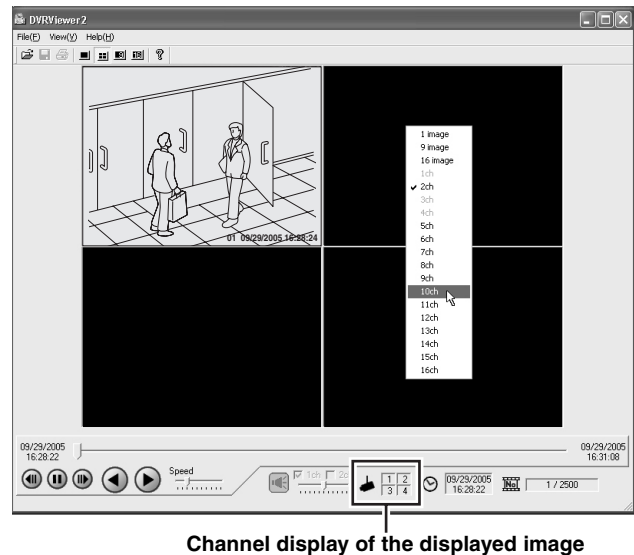
- The display pattern can also be selected from the menu bar or from the context menu displayed on the screen.
- On the 4/9/16 screen, double clicking on a specific image will display it on full screen.

### Selecting the Channel Displayed on the Screen

Right clicking the Viewer screen will display the context menu. Clicking the channel you want to display within the context menu will switch the channel display.

When using the quad screen, the number of the channels being viewed is displayed in [Channel] of the operating panel.

**Example: Displaying channel number 10 in the top right screen**



#### NOTE

##### (Context Menu)

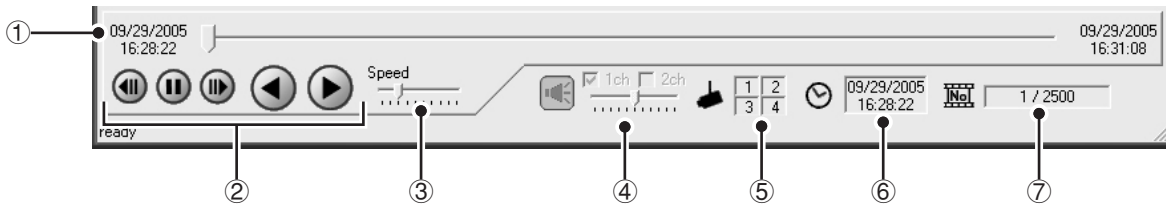
- The channel being currently displayed is checked on the specified channel.
- Unchecking a channel results in the images of that channel not being displayed but at least one image display is necessary for each screen pattern, therefore all the images on the screen cannot be turned off.
- The channel number of the image data that is not being saved is not displayed in the context menu.
- Multiple channels cannot be selected.
- The images of each channel are played back correspondingly.

Even when switching the displayed channel, if there is no image data at the current point of playback, no images will be displayed.

## Functions of the Viewer Operating Panel

The audio and image functions of the Viewer screen can be operated.

(Viewer Operating Panel)



### ① Playback slide bar

The time stamp (recording date and time) of the start and stop point of the playback file are displayed at both ends of the slide bar.

Sliding the slide bar knob allows you to move the playback point.

#### NOTE

- Clicking the knob or sliding the knob while clicking it displays the number of the image of the video being displayed, on the cursor.
- Clicking a position that differs from the current playback point using the slide bar will move the playback point by one percent of the total number of images.

### ② Operating buttons

Buttons that can be selected are black, buttons that are currently in function are green.

- ⏮ : Rewinds to the previous image when the image is on pause.
- ⏸ : Pauses the playback.
- ⏭ : Forwards to the next image when the image is on pause.
- ⏪ : If the slide bar knob is positioned to the right of the start point, the video can be played in reverse.
- ⏩ : If the slide bar knob is positioned to the left of the stop point, the video can be played in sequence.

### ③ Playback speed adjusting section (Initial setting: 3)

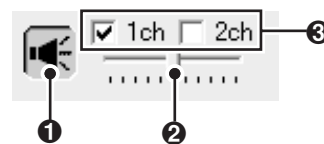
Allows you to adjust the playback speed to 10 levels by sliding the slide bar knob.

#### ! CAUTION

- Set the playback speed while playback is stopped.
- When playing back audio, audio is played back at the rate at which it was recorded regardless of the [Playback Speed] set.

### ④ Audio adjusting section

Allows you to turn on/off and adjust the volume of the audio playback when a playback file contains audio data.



- ① Clicking the button turns the audio playback on and off.
- ② Sliding the knob allows you to adjust the audio volume to 10 levels.
- ③ You can select the channel for audio playback (1ch/2ch).

#### ! CAUTION

- Be sure to stop playback before you turn on/off audio playback or switch the playback channel.
- Audio playback is only available when you are in the full screen layout.

### ⑤ Channel display

The number of the playback channel of the images being displayed is shown on full screen and quad screen.

### ⑥ Time and date display

The time stamp (recording date and time) of the images being viewed is displayed.

### ⑦ Image number display


The number of the "current image and the total number of images" is displayed.



#### Saving and Printing Images

To save or print the image currently being displayed, switch to **“Full screen display”** and perform the following operations.

##### Saving images

Click  in the toolbar or **“Save”** in the File menu.

The save dialog appears.

Specify the destination folder and file and click [OK]. The image on the Viewer screen is saved in the bitmap format.

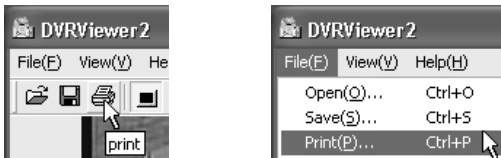


##### Printing Images

Click  in the toolbar or click **“Print”** in the File menu.

The print dialog appears.

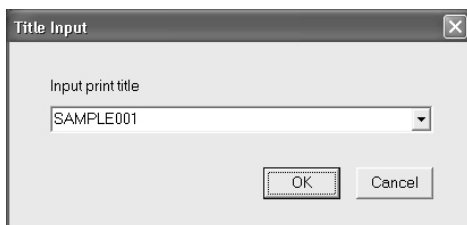
Set the printing conditions and click [OK]. The image on the Viewer screen is printed full size.



##### Displaying a Title on the Image that is Printed

Click **“Title Input”** in the File menu.

The **“Title Input”** dialog appears. Type the title to be printed in the input box and click [OK]. The title is displayed at the bottom of the image when it is printed.

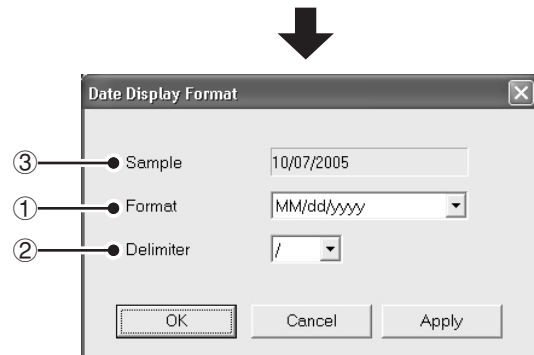
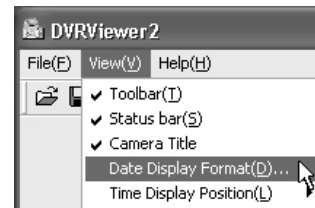


##### NOTE

- The ten most recent input titles are saved which allows you to choose a title using the pull down menu.

#### Setting the Date and Time Display Format

Clicking the **“Date Display Format”** will display the [Date Display Format] dialog. Set the format and delimiter and click [Apply] and then [OK].



##### ① Display format (◆ indicates default setting)

To set the date display format.

**Selections:**

- ◆ MM/dd/yyyy (Month/Day/Year)
- dd/MM/yyyy (Day/Month/Year)
- yyyy/MM/dd (Year/Month/Day)

##### ② Delimiter (◆ indicates default setting)

**Selections:** / (◆Slash), - (Hyphen), . (Period)

##### ③ Sample

When you change the display format or delimiter and click [Apply], the sample (preview) is updated with the new settings.

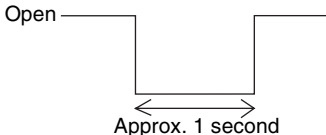

**About Specifications (P213)**

The specifications indicated in the list have been partly revised.

Product number	DSR-5016PA (16 channels), DSR-5009PA (9 channels)	
Hard disk capacity	Can be expanded using 80, 160, 250, 300 or 500GB hard disk (sold separately)	
Video input terminal	VBS/VS 1.0 V (p-p), 75 Ω, BNC (DSR-5016PA: x16, DSR-5009PA: x9)	
Video output terminal	Through output of each video input, BNC (DSR-5016PA: x16, DSR-5009PA: x9)	
Terminals	Alarm input terminals	No-volt contacts (with a pulse width of 100 ms or more) (DSR-5016PA: x16, DSR-5009PA: x9)
	Sensor alarm output terminals	Open collector, Low level active (Max. 25 mA) (DSR-5016PA: x16, DSR-5009PA: x9)
	Clock adjust output terminal	Open collector, Low level active (Max. 25 mA)
Current consumption	880 mA	

**About Terminal Board Specifications (P219)**

The terminal board specifications indicated in the list have been partly revised.

Input/output terminals	Signal level	Input/output circuit
CTL7 Clock adjust output [Open collector 1kΩ, Low level active]		

**OpenSSL License**

The following license is applied to OpenSSL.

```
LICENSE ISSUES
=====
```

```
The OpenSSL toolkit stays under a dual license, i.e. both the conditions of
the OpenSSL License and the original SSLeay license apply to the toolkit.
See below for the actual license texts. Actually both licenses are BSD-style
Open Source licenses. In case of any license issues related to OpenSSL
please contact openssl-core@openssl.org.
```

```
OpenSSL License
-----
```

```
/* =====
 * Copyright (c) 1998-2003 The OpenSSL Project. All rights reserved.
 *
 * Redistribution and use in source and binary forms, with or without
 * modification, are permitted provided that the following conditions
 * are met:
 *
 * 1. Redistributions of source code must retain the above copyright
 * notice, this list of conditions and the following disclaimer.
 *
 * 2. Redistributions in binary form must reproduce the above copyright
 * notice, this list of conditions and the following disclaimer in
 * the documentation and/or other materials provided with the
 * distribution.
 *
 * 3. All advertising materials mentioning features or use of this
 * software must display the following acknowledgment:
 * "This product includes software developed by the OpenSSL Project
 * for use in the OpenSSL Toolkit. (http://www.openssl.org/)"
 *
 * 4. The names "OpenSSL Toolkit" and "OpenSSL Project" must not be used to
 * endorse or promote products derived from this software without
 * prior written permission. For written permission, please contact
 * openssl-core@openssl.org.
 *
 * 5. Products derived from this software may not be called "OpenSSL"
 * nor may "OpenSSL" appear in their names without prior written
 * permission of the OpenSSL Project.
 *
```

## OpenSSL License (continued)

```

* 6. Redistributions of any form whatsoever must retain the following
* acknowledgment:
*   "This product includes software developed by the OpenSSL Project
*   for use in the OpenSSL Toolkit (http://www.openssl.org/)"
*
* THIS SOFTWARE IS PROVIDED BY THE OpenSSL PROJECT 'AS IS' AND ANY
* EXPRESSED OR IMPLIED WARRANTIES, INCLUDING, BUT NOT LIMITED TO, THE
* IMPLIED WARRANTIES OF MERCHANTABILITY AND FITNESS FOR A PARTICULAR
* PURPOSE ARE DISCLAIMED. IN NO EVENT SHALL THE OpenSSL PROJECT OR
* ITS CONTRIBUTORS BE LIABLE FOR ANY DIRECT, INDIRECT, INCIDENTAL,
* SPECIAL, EXEMPLARY, OR CONSEQUENTIAL DAMAGES (INCLUDING, BUT
* NOT LIMITED TO, PROCUREMENT OF SUBSTITUTE GOODS OR SERVICES;
* LOSS OF USE, DATA, OR PROFITS; OR BUSINESS INTERRUPTION)
* HOWEVER CAUSED AND ON ANY THEORY OF LIABILITY, WHETHER IN CONTRACT,
* STRICT LIABILITY, OR TORT (INCLUDING NEGLIGENCE OR OTHERWISE)
* ARISING IN ANY WAY OUT OF THE USE OF THIS SOFTWARE, EVEN IF ADVISED
* OF THE POSSIBILITY OF SUCH DAMAGE.
* =====
*
* This product includes cryptographic software written by Eric Young
* (eay@cryptsoft.com). This product includes software written by Tim
* Hudson (tjh@cryptsoft.com).
*
*/

Original SSLeay License
-----

/* Copyright (C) 1995-1998 Eric Young (eay@cryptsoft.com)
* All rights reserved.
*
* This package is an SSL implementation written
* by Eric Young (eay@cryptsoft.com).
* The implementation was written so as to conform with Netscapes SSL.
*
* This library is free for commercial and non-commercial use as long as
* the following conditions are aheared to. The following conditions
* apply to all code found in this distribution, be it the RC4, RSA,
* lhash, DES, etc., code; not just the SSL code. The SSL documentation
* included with this distribution is covered by the same copyright terms
* except that the holder is Tim Hudson (tjh@cryptsoft.com).
*
* Copyright remains Eric Young's, and as such any Copyright notices in
* the code are not to be removed.
* If this package is used in a product, Eric Young should be given attribution
* as the author of the parts of the library used.
* This can be in the form of a textual message at program startup or
* in documentation (online or textual) provided with the package.
*
* Redistribution and use in source and binary forms, with or without
* modification, are permitted provided that the following conditions
* are met:
* 1. Redistributions of source code must retain the copyright
* notice, this list of conditions and the following disclaimer.
* 2. Redistributions in binary form must reproduce the above copyright
* notice, this list of conditions and the following disclaimer in the
* documentation and/or other materials provided with the distribution.
* 3. All advertising materials mentioning features or use of this software
* must display the following acknowledgement:
*   "This product includes cryptographic software written by
*   Eric Young (eay@cryptsoft.com)"
*   The word 'cryptographic' can be left out if the rouines from the library
*   being used are not cryptographic related :-).
* 4. If you include any Windows specific code (or a derivative thereof) from
* the apps directory (application code) you must include an acknowledgement:
*   "This product includes software written by Tim Hudson (tjh@cryptsoft.com)"
*
* THIS SOFTWARE IS PROVIDED BY ERIC YOUNG 'AS IS' AND
* ANY EXPRESS OR IMPLIED WARRANTIES, INCLUDING, BUT NOT LIMITED TO, THE
* IMPLIED WARRANTIES OF MERCHANTABILITY AND FITNESS FOR A PARTICULAR PURPOSE
* ARE DISCLAIMED. IN NO EVENT SHALL THE AUTHOR OR CONTRIBUTORS BE LIABLE
* FOR ANY DIRECT, INDIRECT, INCIDENTAL, SPECIAL, EXEMPLARY, OR CONSEQUENTIAL
* DAMAGES (INCLUDING, BUT NOT LIMITED TO, PROCUREMENT OF SUBSTITUTE GOODS
* OR SERVICES; LOSS OF USE, DATA, OR PROFITS; OR BUSINESS INTERRUPTION)
* HOWEVER CAUSED AND ON ANY THEORY OF LIABILITY, WHETHER IN CONTRACT, STRICT
* LIABILITY, OR TORT (INCLUDING NEGLIGENCE OR OTHERWISE) ARISING IN ANY WAY
* OUT OF THE USE OF THIS SOFTWARE, EVEN IF ADVISED OF THE POSSIBILITY OF
* SUCH DAMAGE.
*
* The licence and distribution terms for any publically available version or
* derivative of this code cannot be changed. i.e. this code cannot simply be
* copied and put under another distribution licence
* [including the GNU Public Licence.]
*/

```

1AC6P1P3036--  
L8HBD/XE (1205KP)



---

**SANYO Electric Co., Ltd.**

## Free Manuals Download Website

<http://myh66.com>

<http://usermanuals.us>

<http://www.somanuals.com>

<http://www.4manuals.cc>

<http://www.manual-lib.com>

<http://www.404manual.com>

<http://www.luxmanual.com>

<http://aubethermostatmanual.com>

Golf course search by state

<http://golfingnear.com>

Email search by domain

<http://emailbydomain.com>

Auto manuals search

<http://auto.somanuals.com>

TV manuals search

<http://tv.somanuals.com>