

HDD Audio Player HDP-M3000

Version 1.01

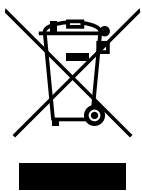
Instruction Manual

Contents

Accessories	2
Precautions	3
Controls	4
Recommended PC environment	4
How to connect the player to your PC	5
How to install the MusicFileMaster software	6
How to open the instruction manual	7
Disconnecting the player from your PC	8
How to check whether the player has recognised correctly or not	8
Removable Disk display	9
Starting up the MusicFileMaster	10
Transferring data by MusicFileMaster	11
Copying data by using Explorer	11
Transferring data using the Media Player	12
Designating the playback order (Playlist)	12
Formatting the player's data	12
Before playing	13
Date and time setting	14
Play music	15
Examples of playback mode selection display	17
Formatting	19
Menu setting	20
Troubleshooting guide	23
Cleaning the cabinet	24
Specifications	24

Accessories

USB cable
Headphones



Your SANYO product is designed and manufactured with high quality materials and components which can be recycled and reused.

This symbol means that electrical and electronic equipment, at their end-of-life, should be disposed of separately from your household waste.

Please dispose of this equipment at your local community waste collection/recycling centre.

In the European Union there are separate collection systems for used electrical and electronic products.

Please help us to conserve the environment we live in!

Precautions

- The apparatus shall not be exposed to dripping or splashing.
- Do not drop the player or subject it to strong shocks.
- Do not use where there are extremes of temperature (below 5°C or exceeding 35°C).
- IBM and PC/AT are registered trademarks of International Business Machines Corporation.
- Microsoft, Windows Media™, and the Windows® Logo are trademarks or registered trademarks of Microsoft Corporation in the United States and/or other countries.
- Windows Media™ Player is trademark or registered trademark of Microsoft Corporation. 
- Adobe (Acrobat) Reader is a registered trademark of Adobe Systems Incorporated.
- Other system and product names generally are the registered trademarks or trademarks of the respective development manufacturers. The symbols ™ and ® are not shown in this manual.
- High volume levels can create potentially dangerous situations by drowning out surrounding sounds. Use caution when driving while operating the player, and obey all applicable laws.
Do not play your headphones at a high volume level. Hearing experts advise against continuous extended play.
If you experience a ringing in your ears, reduce the volume or discontinue use.
- This player contains an internal Lithium Ion Battery. The battery or the player should not be disposed of in a fire.
The battery or the player should not be thrown in the trash.
The battery or the player may require recycling in accordance with local laws. Contact your local regulatory authorities for more information.
- This battery is an articles of consumption. As it is charged and used, the amount of time it lasts will eventually get shorter and shorter. Consult your dealer when replacing the battery.
- SANYO takes no responsibility for data loss due to power cuts or damage to the player.
- The Player (Internal Hard Disk)
The player has a built-in hard disk. The internal hard disk is susceptible to shocks, vibration, and changes in temperature. It might sometimes be impossible to read or write data due to damage under certain usage conditions. Use the player to store data temporarily. Do not use it for permanent data storage.
- To avoid potential risk of data loss caused by accidental operation or malfunction of the player, we recommend that you save a backup copy of your data on a PC, etc.
- Recording copyright material without permission of the copyright owners is usually an infringement. If you wish to re-record copyright material, permission from the copyright owner is necessary. SANYO does not approve of, and cannot be held responsible for, any unlawful use of this machine.

Note:

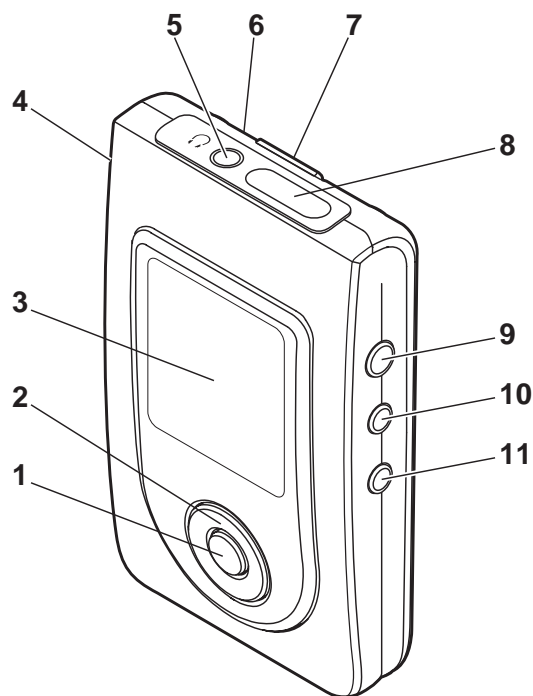
This handling description is created prior to product development.

When a part of the product specification must be changed to improve operability or other functions, priority is given to the product specification itself. In such instances, the instruction manual may not entirely match all the functions of the actual product.

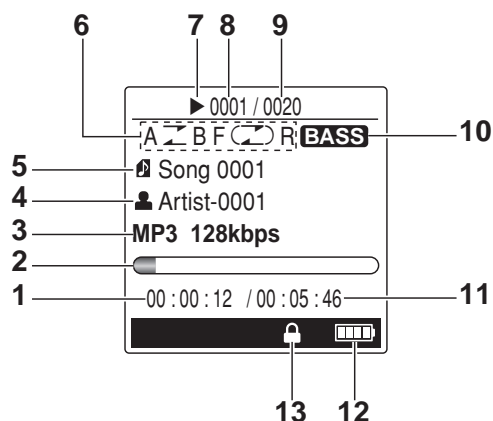
Therefore, the actual product and packaging, as well as the name and illustration, may differ from the manual.

The screen/LCD display shown as an example in this manual may be different from the actual screen/LCD display.

Controls



1. Play/Stop, Top menu, Set button (●)
2. Volume, Skip/Search, Menu select button (▲, ▼, ◀, ▶)
3. LCD display
4. Necklace connection hole
5. Headphones socket (🎧)
6. Reset switch (Rear of the unit)
7. Hold switch (◀ HOLD)
8. USB terminal
9. Power, Play/Stop button (▶/■ ⏻)
10. Menu button (MENU)
11. Repeat button (REPEAT)



LCD display

1. Elapsed playing time
2. Play bar
3. File/Bit format
4. Singer name
5. File/Song name
6. Repeat/Random/A-B Repeat/Intro Scan
7. Play/Stop
8. Current file/song number
9. Total file/song number
10. Bass boost
11. Total play time
12. Battery
13. Hold

Recommended PC environment

Supported PCs

IBM PC/AT compatible

Supported OS

Windows XP Professional
 Windows XP Home Edition
 Windows 2000 Professional
 Windows Millennium Edition(Me)

USB port

One required for connection

Sound board

16-bit Windows-compatible sound board supported

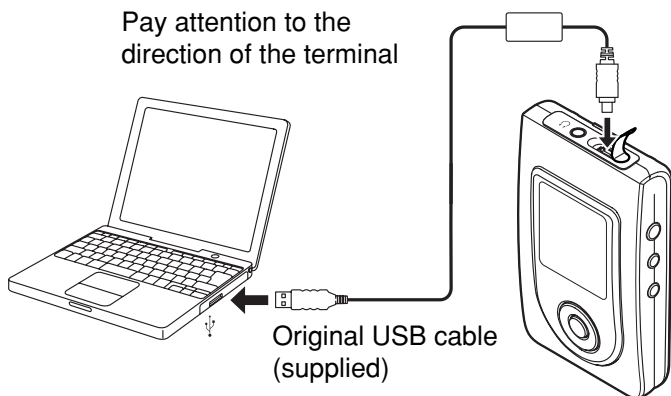
Other

Speakers or headphones required

Note:

- Operation is not guaranteed for Macintosh PCs.
- Operation is not guaranteed for the following environments.
 - Upgraded Windows environments
 - Windows 95, 98, 98SE, NT
 - Dual-boot Windows environments
- Standby, suspend, and other modes may not work properly with your particular environment. If this is the case, do not use those modes.

How to connect the player to your PC





Note:

- Do not use an USB hub or USB extension cable (Operation is not guaranteed). Use only the supplied USB cable for connection.
- When you connect the player to the PC for the first time, it sometimes may not be recognised as a Removable Disk. In this case, disconnect the player and reconnect it again.

1. Turn on your PC and Windows is started.
2. If the player is turned on, press [▶/■⏻] (for at least 2 seconds) to turn the player off.
3. Connect the player to the PC with the USB cable.

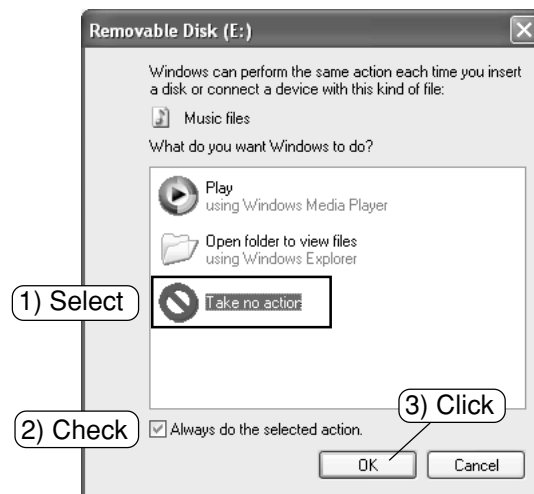
When the player is connected to the PC, it automatically enters to the battery charging mode.

“” is displayed on the display while charging. When the charge is completed, “” appears.

- Fully charge the battery before using the player for the first time.
- The battery is fully charged approximately 4 hours.

Selecting the action Windows is to take (Windows XP only)

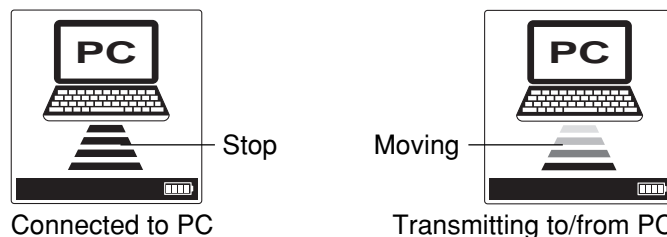
After connection, the following screen will appear. Example:



Adjust your settings to match your PC's environment. In this manual, [Take no action] is selected, [Always do the selected action] is checked, and [OK] is clicked. This completes the connection to the PC.

- For Windows Me/2000, this operation is not needed.

When connected to the PC, the player display will be as shown below and none of the operating buttons will work.



Before disconnecting the player from the PC, be sure to follow the steps on page 8. Do not disconnect during data transfer.

How to install the MusicFileMaster software

- Reproduction of this software is forbidden.
- This software shall not be copied and reprinted.
- SANYO shall not be liable for any damages arising out of the use of this software.
- The screen shots are of Windows XP.
- The screens displayed on your PC may not exactly correspond to those shown in this manual depending on the OS version and manufacturer.

Connect the player to your PC (refer to page 5).

To start up Explorer

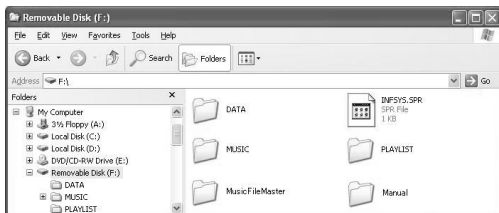
1. Click [start], then right-click [My Computer], and select [Explore] from the menu that appears.



Explorer will start up.

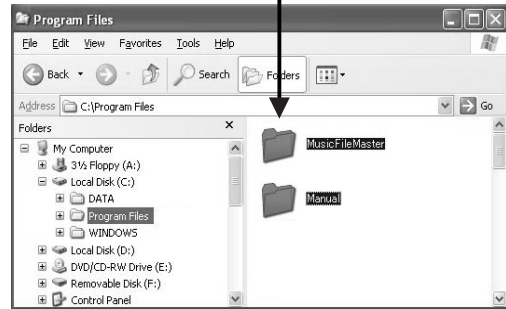
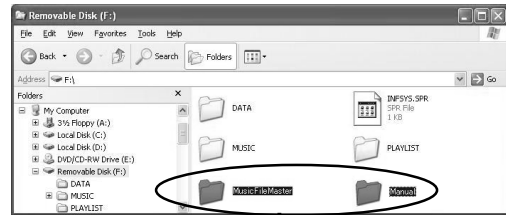
2. [Removable Disk (F:)] icon will appear in My Computer in Windows.

“F” (drive letter) is replaced by your drive letter.



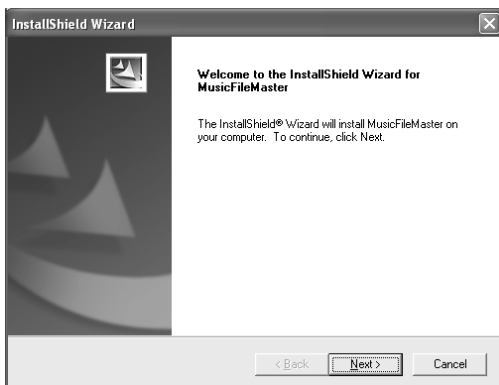
Copying [MusicFileMaster] and [Manual] folders to your PC for backup

Click [Removable Disk (F:)]. Select [MusicFileMaster] and [Manual] folders, and drag and drop them into a folder of your choice on your PC.



Installing the MusicFileMaster software

1. In the step 2 on the previous page, click [Removable Disk (F:)] > [MusicFileMaster] folder.
2. Double click [Setup.exe] in [MusicFileMaster] folder. [InstallShield Wizard] screen appears.



Click [Next].

3. Check "License Agreement" then click [Yes].



MusicFileMaster is not installed if you do not agree to the license agreement.

4. Enter the user name then click [Next].

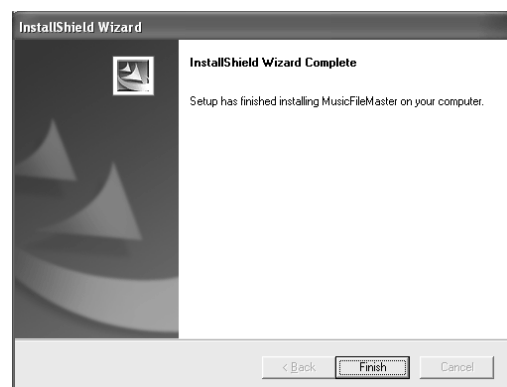


5. Select a folder where setup will install the files. Check "Destination Folder" then click [Next].



To install to a different folder, click [Browse...] and select another folder.

6. After the setup has finished installing MusicFileMaster software, click [Finish].



[MusicFileMaster] and [SANYO HDP DMP support] icons appear on the desktop.

Also Manual folder is installed to "C:\Program Files\SANYO\Manual" (in this example) when the installation of MusicFileMaster is performed.

Note:

Do not delete, move, or modify the installed folders/files.

[SANYO HDP DMP support]: For downloading the latest software, etc. from our web site.
<http://www.sanyo-audio.com/english/index.html>

How to open the instruction manual

1. In the step 2 on the previous page, click [Removable Disk (F:)] > [Manual] folder.

or

Open the [Manual] folder below:

C:\Program Files\SANYO\Manual (in this example)

2. Double click the desired file (Example: [HDP-M3000 Instruction Manual English.pdf]).

Adobe (Acrobat) Reader is necessary to view the PDF file. If you have not the Adobe Reader installed, see <http://www.adobe.com/products/acrobat/readermain.html> to download the Adobe Reader.

Disconnecting the player from your PC

Before disconnecting, make sure no data is being transferred.

1. Right-click the Task tray icon at the bottom right of the Windows screen.



If the icon is not displayed, refer to the Windows help.

2. Click [Safely Remove Hardware] displayed.



3. Select [USB Mass Storage Device] and click [Stop].



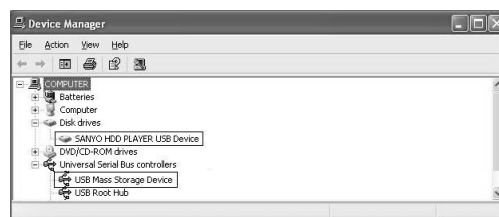
4. Check that [SANYO HDD PLAYER USB Device] is in the list, select [USB Mass Storage Device] and click [OK].



5. Disconnect the player from your PC.

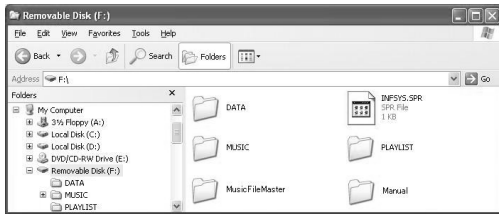
How to check whether the player has recognised correctly or not

1. Connect the player to your PC (refer to page 5).
2. [start] menu > right-click [My Computer] > select [Properties] to open [System Properties] > click [Device Manager] in [Hardware] tab to open [Device Manager].
3. Double click [Disk drives] > double click [Universal Serial Bus controllers]. If the following screen is displayed, it means the player has recognised correctly.



Removable Disk display

An icon [Removable Disk] will appear in My Computer in Windows when the player is connected to your PC.



[MUSIC] folder

Files transferred from your PC are stored in this folder.

- There is no set format for file names for files which are transferred, but they must be MP3 or WMA files.
- The playback order will change if the files in MUSIC folder are added. Also the same is said of the case of the directly created folder in the MUSIC folder.
- You can create a folder in the MUSIC folder and move files to that folder.
Files in subfolders up to two levels below the MUSIC folder can be played.
- The player can recognize up to 250 files in the MUSIC folder.

[DATA] folder

This folder stores data files (Excel, Word, etc.) as a Removable Disk.

[PLAYLIST] folder

This folder stores playlist files.

- The player can recognize up to 250 files in the PLAYLIST folder.

[MusicFileMaster] folder

This folder is for installing MusicFileMaster.

[Manual] folder

This folder stores instruction manual files.

[INFSYS.SPR]

Hidden file containing the player information reads by the PC application. Do not delete.

Starting up the MusicFileMaster

MusicFileMaster

You can select music files on your hard disk and manage them using MusicFileMaster, by reading them into the application. MusicFileMaster enables you to transfer music files to your portable device, and manage the transferred music files.

MusicFileMaster has two modes.

Library mode: In this mode you can play and manage music files and create playlists.

Portable device mode: In this mode, you can transfer music files to your portable device, manage them, and play music files which are on your portable device.

Starting up the MusicFileMaster

Connect the player to your PC (refer to page 5).

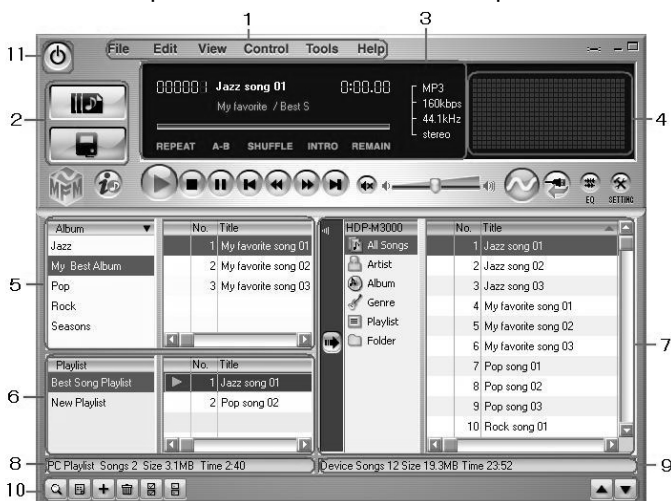
Double click [MusicFileMaster] icon created on the desktop to start up the MusicFileMaster.

Note:

It is recommended to end all Windows applications before start-up.

Controls in the MusicFileMaster window

For details, please refer to the on-line help.



1. Menu bar

Menus for operations are displayed.

2. Mode selection buttons

3. Music file information

4. Spectrum analyser

5. Library

Music file list in your PC is displayed.

The list is displayed in [Library] mode. [All Songs], [Artist/Album], [Album], [Genre] and [Format] can be displayed individually.

6. Playlist

Playlists in your PC are displayed.

7. Library in portable device

List of music information in portable device is displayed.

8. Music information in your PC

9. Music information in device

10. List control buttons

11. End button

This button is used to end the MusicFileMaster.

How to use on-line help

Start up the MusicFileMaster and select the [Table of Contents] in the [Help] menu. Refer to detailed information on the menu.



Transferring data by MusicFileMaster

Start up the MusicFileMaster (refer to page 10).

Transferring data to the player

After selecting [Help] menu > [Table of Contents], click [Basic operations] > [Transferring music files to portable device] of the [Portable device]. Then, transfer files according to the instruction displayed on the screen.

Note:

- Registration of too many pieces of music may make the player action slower. It is recommended to register about 5,000 pieces at maximum as standard registration. The player may not work depending on the environment of your PC.
- Only the files of MP3 and WMA formats (without copyright) can be transferred to the device and played back by MusicFileMaster. However, a file which has the extension of RMP (Riff MP3) can not be played back. All files of MP3 and WMA formats including variable bit rate can be transferred, but may not be played back correctly.

Copying data by using Explorer

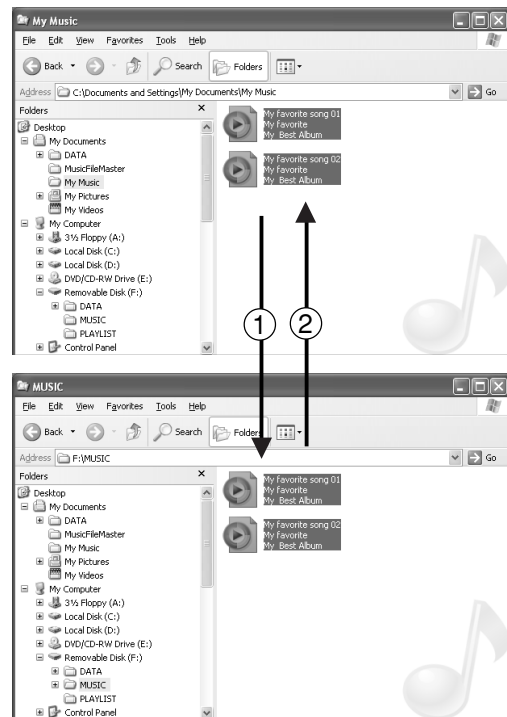
Start up Explorer (refer to page 6).

(1) Copying files to the player

Select the music files to copy and drag and drop them to [MUSIC] folder in [Removable Disk].

(2) Copying files to your PC

Select the music files you wish to copy inside [MUSIC] folder in [Removable Disk] and drag and drop them into a folder of your choice on your PC.



Note:

- Place files you wish to play either in the MUSIC folder or any subfolders two levels below the MUSIC folder.
- Files larger than 4GB cannot be transferred.
- Some MP3/WMA files may not be able to be played on this player.
- Any MP3 or WMA files that you transfer and that are not for your own personal enjoyment may not be used without permission from the copyright holder, as stipulated by intellectual copyright law.
- You can search for music files transferred using Explorer or Windows Media Player. Use [Remake Management File of Device] function in MusicFileMaster's [Tools] menu.

Transferring data using the Media Player

If you have the Microsoft Windows Media Player installed, you can transfer WMA files to the player and listen to them. See the Windows Media Player on-line help for details on how to do this.

Note:

- Use Windows Media Player 10 when transferring music distribution data (in WMA format) which uses DRM10 copyright protection to the Player. First, select "WMPlayer10 (DRM10)" in the "PC Connecting Mode" setting (refer to page 22).
- Never disconnect the player from your PC during transfer.
- Files in subfolders up to two levels below the MUSIC folder can be transferred.

Precaution with playing/transferring of WMA (Windows Media Audio) files:

Note:

DRM: Digital Rights Management: a copyright security protection system that is used in WMA music files sold over the internet.

This systems disables illegal copying of music. Music data sold over the internet are normally copyright protected using either DRM (version 10) or PD-DRM (version 9).

For Windows XP User: A DRM (ver 10) copyright protected WMA music file purchased over the internet will play on the HDP-M3000 player if such music file is transferred from your PC to the player using Windows Media Player (ver 10), which is a data file management/player/transfer software that comes with your Windows XP.

For Windows 2000, Windows Me user: Since your OS will not support Windows Media Player (ver 10), the WMA music file which is either copyright protected and/or purchased over the internet, can be transferred from your PC to the HDP-M3000 player, however, the player will not be able to recognize that particular music file and thus will not play.

Designating the playback order (Playlist)

It is possible to designate the playback order of music. Create a playlist on your PC and transfer it to the player to play your music in that order.

It is also possible to transfer two or more playlists to the player.

1. Start up the MusicFileMaster (refer to page 10).
2. After selecting [Table of Contents] in [Help] menu, click [Basic operations] > [Creating / deleting portable device playlists] of [Portable device]. Then, store the data according to the instruction displayed on the screen.

Formatting the player's data

Always format data using the player itself (refer to page 19).


Note:

- If you select the format function from the menu, the memory will be initialised and all files will be erased. Use only when you need it. Save a backup copy of your data on a PC, etc.

- The player might not operate normally if formatting the player with your PC.
- If you accidentally formatted using your PC, reformat it using the player.


Before playing

Using the headphones

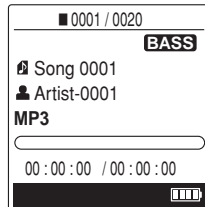
Connect the headphones to the  socket.


Turning the power on and off



Press  (for at least 2 seconds). "HELLO" appears briefly on the display and the power turns on.

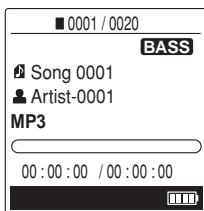
The last selected mode appears (Resume function).
Example:



Press  (for at least 2 seconds). "SEE YOU" appears and the power turns off.

Examples of menu/mode display

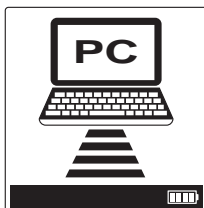
Music mode



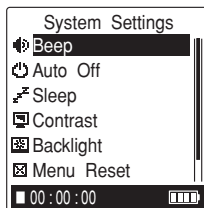
Main menu




USB mode




System setting




Battery indicator

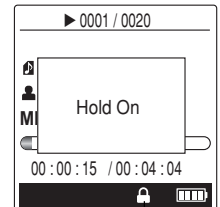
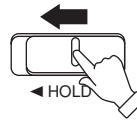
"" indicates that the battery is full and the power in battery will be come less when using.

"" indicates low battery power and the battery should be charged.

Hold function


This prevents operation from stopping by accidentally pressing a button.

Set [ HOLD] to the left. "Hold On" appears briefly and the hold function is engaged.





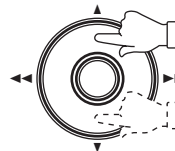
Hold

- If an operation button is pressed while the hold function is engaged, "Hold On" will appear and nothing else happens.

Set [ HOLD] to the right. "Hold Off" appears briefly and the hold function is disengaged. The hold indicator disappears.

To adjust the volume

Press [] or []. The volume level appears.



(VOLUME 00 to 30)

"WAITING" is displayed when accessing the hard disk takes some time.

Setting up the beep sound (refer to page 21)

Changing auto power off time (refer to page 21)

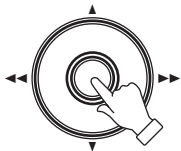
Setting up sleep time (refer to page 22)

Adjusting the contrast of LCD display (refer to page 22)

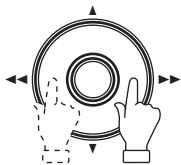
Setting up backlight time (refer to page 22)

Date and time setting

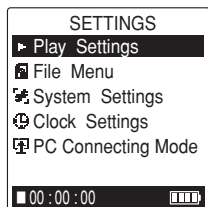
1. In the stop mode, press [●] (for at least 2 seconds). The first stage menu appears.



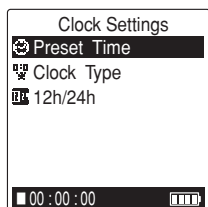
2. Press [◀◀] or [▶▶] to select "SETTINGS".



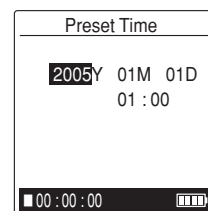
3. Press [●]. "SETTINGS" menu appears.



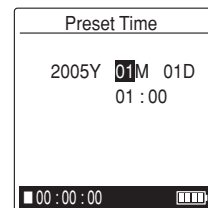
- Press [◀◀] once during the menu setting. The setting is cancelled and the previous menu returns.
4. Press [▲] or [▼] to select "Clock Settings", then press [●] or [▶▶]. "Clock Settings" menu appears.



5. Press [▲] or [▼] to select "Preset Time", then press [●] or [▶▶]. The player enters to the date and time setting mode. The year display selects.



6. Press [▲] or [▼] to select the year, then press [●] or [▶▶]. The month display selects.



7. Set the month, day, hour and minute by following step 6 above.

When the minute setting is completed then press [●], "Clock Settings" menu returns.

8. Press [MENU] to quit the menu setting mode.

If no adjustments are made in the menu setting, the original display returns after approximately 30 seconds.

Setting up the clock display mode (refer to page 22)

Setting up the clock to 12-hour or 24-hour display (refer to page 22)

Play music

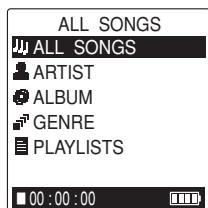
Playing the selected music file in the MUSIC menu

Valid only for music files transferred by MusicFileMaster

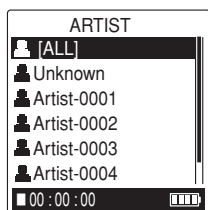
1. In the stop mode, press [●] (for at least 2 seconds). The first stage menu appears.



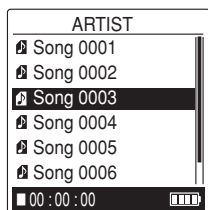
2. Press [◀◀] or [▶▶] to select "MUSIC", then press [●]. The playback mode selection display appears.



3. Press [▲] or [▼] to select the desired mode, then press [●]. The list of items for selected playback mode appears.

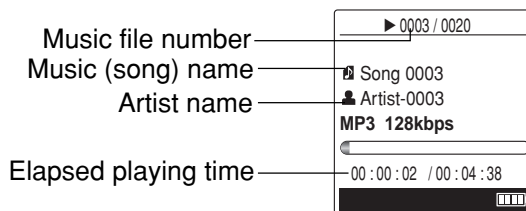


- For details of the playback mode, please refer to "Examples of playback mode selection display" in page 17.
4. Press [▲] or [▼] to select the item you want to play back, then press [●].
 5. Press [▲] or [▼] to select the music file you want to play back.



- When searching the item for more detail, repeat steps 4 and 5.
- Press [◀◀] once during the menu setting. The setting is cancelled and the previous menu returns.

6. Press [●]. Playback begins.

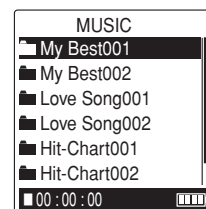


- Music (song)/Artist name may not display on some music files.

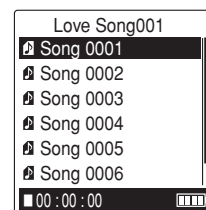
Playing the selected music file in the FOLDER menu

For the case when files are transferred by Explorer and Windows Media Player

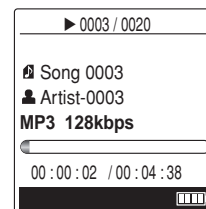
1. In the stop mode, press [●] (for at least 2 seconds). The first stage menu appears.
2. Press [◀◀] or [▶▶] to select "FOLDER", then press [●]. MUSIC folder appears.
3. Press [●] again. The list of items appears.



4. Press [▲] or [▼] to select the desired folder.
 - For details of the playback mode, please refer to "Examples of playback mode selection display" in page 17.
5. Press [●]. The list of music files for selected folder is displayed.



- When searching the music file for more folder, repeat steps 4 and 5.
6. Press [▲] or [▼] to select the music file you want to play back.
 7. Press [●]. Playback begins.



For Playlists playback: Create a playlist on the MusicFileMaster and transfer it to the player before starting playback.

Press [MENU] during play mode. The previous menu setting appears. Press [MENU] again to return to the play mode.

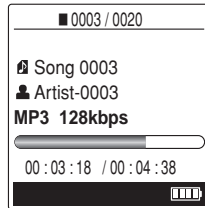
Press [MENU] (for at least 2 seconds) during playback. The list of files appears. Press it for at least 2 seconds again. The file information appears.

Note:

- Name of artist or album may not be displayed depending on the music file.
- Registration of too many pieces of music may lower the player performance. It is recommended to register about 5,000 pieces at maximum as standard registration.

To stop playback

Press [●] or [▶/■⏻].



Press it again to resume playback.

Note:

- A few seconds may be required to start playback for large files or an extremely large number of files.
- Depending on the MP3/WMA file, the displayed playing time may be at variance with the actual playing time.
- Some MP3/WMA files may not be able to be played on this player.

Fast forward play

Press [▶▶] during playback and hold it.
Release [▶▶] to resume normal playback.

Fast reverse play

Press [◀◀] during playback and hold it.
Release [◀◀] to resume normal playback.

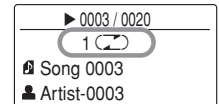
To skip to the next or previous file

Press [▶▶] or [◀◀] during playback or stop.

Selecting the repeat playback

Press [REPEAT] (for at least 2 seconds) to select the repeat mode. Each time [REPEAT] is pressed (for at least 2 seconds), the repeat mode changes as follows:

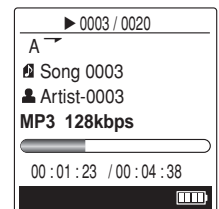
- 1 (🔄): Plays a single file repeatedly.
 - F (🔄): Plays all files in the current folder repeatedly (only for FOLDER playback).
 - A (🔄): Plays all files (or all files in the selected ARTIST, ALBUM or GENRE) repeatedly.
- Released: Repeat off.



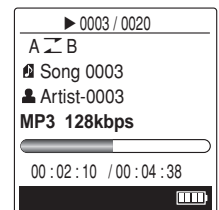
- This setting can also be carried out in the menu setting mode (refer to page 21).

A-B repeat playback

1. During playback, press [REPEAT] at the beginning of the section you want to repeat (Point A).



2. Press [REPEAT] again at the end of the section you want to repeat (Point B). The specified section (between points A and B) is played back repeatedly.



Press [REPEAT] again to cancel.

- Setting up the repeat playback (refer to page 21)
- Setting up the random playback (refer to page 21)
- Setting up the bass boost (refer to page 21)
- Setting up the sound equalizer (refer to page 21)
- Setting up the intro function (refer to page 21)

Examples of playback mode selection display

MUSIC menu (Valid only for music files transferred by MusicFileMaster.)

- └ **ALL SONGS:** Display of all the music files
- └ **ARTIST:**
 - └ [ALL]
 - └ [ALL]: Display of all the music files
 - └ Display of all the album names – Hereafter is same as ALBUM search.
 - └ Display of all the artist names
 - └ [ALL]: Display of all the music files of the selected album
 - └ Display of all the album names of the selected artist – Display of all the music files of the selected album
- └ **ALBUM:**
 - └ [ALL]: Display of all the music files
 - └ Display of all the album names – Display of all the music files of the selected album
- └ **GENRE:**
 - └ [ALL]
 - └ [ALL]
 - └ [ALL]: Display of all the music files
 - └ Display of all the album names – Hereafter is same as ALBUM search.
 - └ Display of all the artist names – Hereafter is same as ARTIST search.
 - └ Display of all the genre names
 - └ [ALL]
 - └ [ALL]: Display of all the music files of the selected genre
 - └ Display of all the album names of the selected genre – Display of all the music files of the selected album
 - └ Display of all the artist names of the selected genre
 - └ [ALL]: Display of all the music files of the selected artist
 - └ Display of all the album names of the selected artist – Display of all the music files of the selected album
- └ **PLAYLISTS:** Display of all the playlists

FOLDER menu (For the case when files are transferred by Explorer and Windows Media Player)

- └ **MUSIC:**
 - └ Display of all the folders
 - └ Display of all the folders in the selected folder – Hereafter is repeated the same search procedure.
 - └ Display of all the music files in the selected folder
 - └ Display of all the music files

Note:

Use of the [Remake Management File of Device] function of the [Tools] menu of the Music File Master enables you to search for the piece of music which has been transferred by Explorer or Windows Media Player.

Formatting

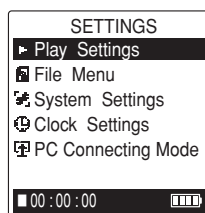
(Erasing all files in all folders)

If you select the format function from the menu, the memory will be initialised and all files will be erased. Use only when you need it. Save a backup copy of your data on a PC, etc.

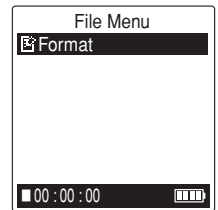
1. In the stop mode, press [●] (for at least 2 seconds). The first stage menu appears.



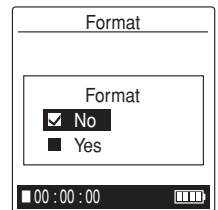
2. Press [◀◀] or [▶▶] to select "SETTINGS", then press [●].



3. Press [▲] or [▼] to select "File Menu", then press [●] or [▶▶].



4. Press [●] or [▶▶].



5. Press [▲] or [▼] to select "Yes", then press [●]. "Formatting", then "Format complete!" appears and all files are erased.

Note:

If you do not want to format, select "No".

Note:

Formatting is not possible during playback.

Menu setting

Common procedures of menu setting

1. In the stop mode, press [●] (for at least 2 seconds). The first stage menu appears.
2. Press [◀◀] or [▶▶] to select the first stage menu, then press [●] to confirm the menu.

“MUSIC” ↔ “FOLDER” ↔ “SETTINGS” ↔ “CLOCK”
 ↔ “EXIT” ↔ “MUSIC” ↔ ...

For SETTINGS menu:

The second stage menu appears.

3. Press [▲] or [▼] to select the second stage menu, then press [●] or [▶▶] to confirm the menu.
 The next stage menu appears.

4. Select the menu and confirm it in the same way.
5. To change the setting of the selected menu, press [▲] or [▼]. Then press [●].
 When the setting is completed, the current menu returns.
 - Press [◀◀] once during the menu setting. The setting is cancelled and the previous menu returns.
6. Press [MENU] to quit the menu setting mode.

Menu function table

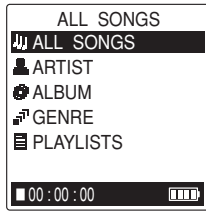
Stage 1			Items
MUSIC			ALL SONGS, ARTIST, ALBUM, GENRE, PLAYLISTS
FOLDER			MUSIC
SETTINGS	Stage 2	Stage 3	Off, One, Folder, All Off, On Off, On Normal, Pop, Rock, Jazz, User EQ Off, 5 sec, 10 sec, 15 sec
	Play Settings	Repeat Random Bass Equalizer Intro Scan	
	File Menu	Format	No, Yes
	System Settings	Beep Auto Off Sleep Contrast Backlight Menu Reset Player Info	Off, On Off, 01 - 15 Off, 10 - 90 01 - 10 Off, 5 sec, 15 sec, On Yes, No Checking the version number and memory information
	Clock Settings	Preset Time Clock Type 12h/24h	Date and time setting Digital 1, Digital 2 12h, 24h
	PC Connecting Mode		USB Mass Storage, WMPlayer10 (DRM10)
CLOCK			Displays the date and time currently.
EXIT			To exit from the menu mode.

MUSIC

Setting up the playback mode

Playing the selected music file

Specify a playback mode (ALL SONGS, ARTIST, ALBUM, GENRE or PLAYLISTS), and search it, and playing music file.



ALL SONGS: Selects all the files.

ARTIST: Selects the files by artist name.

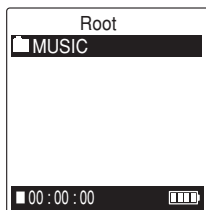
ALBUM: Selects the files by album name.

GENRE: Selects the files by genre name.

PLAYLISTS: Plays the files in the playlist.

FOLDER

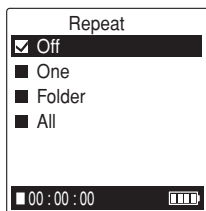
Plays the files in the selected folder.



SETTINGS

Play Settings

Repeat: Setting up the repeat playback



Off: Repeat off.

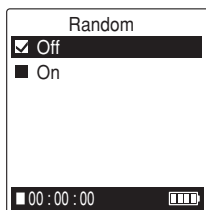
One: Plays a single file repeatedly.

Folder: Plays all files in the current folder repeatedly (only for FOLDER playback).

All: Plays all files repeatedly.

Random: Setting up the random playback

Plays files in the current folder randomly.

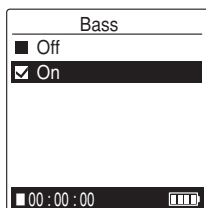


Off: Off

On: On

Random playback is not possible during All repeat mode.

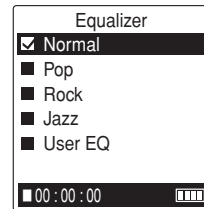
Bass: Setting up the bass boost



Off: Off

On: On

Equalizer: Setting up the sound equalizer



Normal: Deactivates the Equalizer function

Pop: Pop

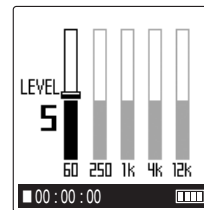
Rock: Rock

Jazz: Jazz

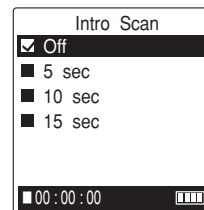
User EQ: User EQ (You can adjust as desired)

[<<<] or [>>>] : Select band.

[▲] or [▼] : Adjust level.



Intro Scan: Setting up the intro function



Off: Off

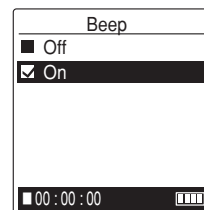
5 sec/10 sec/15 sec: Plays the first 5, 10, or 15 seconds of each file.

File Menu

Format: Formatting (refer to page 19)

System Settings

Beep: Setting up the beep sound



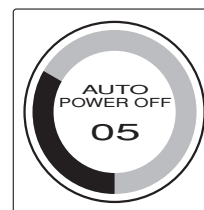
Off: Beep off

On: Beep on

Auto Off: Changing auto power off time

If you don't press any button for a certain period of time, the power will be automatically turned off.

You can change the automatic power off time.



OFF: Off

01 - 15: 01 - 15 (minute)

Sleep: Setting up sleep time

The sleep time function turns off the player after a specified period of time.

It is convenient when you want to sleep while listening to the music.



OFF: Off

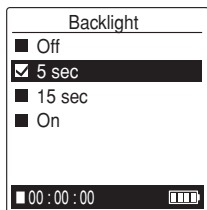
10 - 90: 10, 20, 30, 40, 50, 60, 70, 80 or 90 (minute)

Contrast: Adjusting the contrast of LCD display



01 - 10: 01 - 10

Backlight: Setting up backlight time



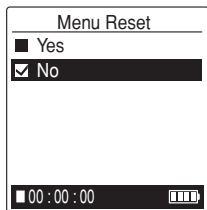
Off: Off

5 sec/15 sec: Turn off the backlight after 5 or 15 seconds

On: Always on

Menu Reset

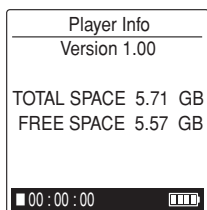
Return menu setting to Preferences.



Yes: Reset it

No: Do not reset it

Player Info: Checking the version number and memory information



Version: Version number

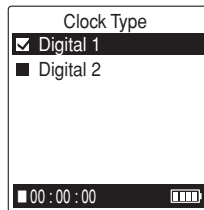
TOTAL SPACE: Total capacity

FREE SPACE: Remaining capacity

Clock Settings

Preset Time: Date and time setting (refer to page 14)

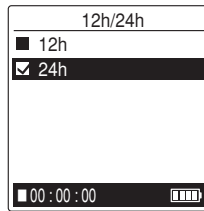
Clock Type: Setting up the clock display mode



Digital 1: Display mode 1

Digital 2: Display mode 2

12h/24h: Setting up the clock to 12-hour or 24-hour display

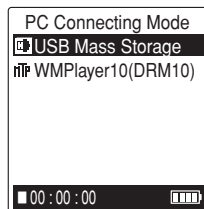


12h: 12-hour display

24h: 24-hour display

PC Connecting Mode

Setting up the PC connecting mode.



USB Mass Storage: For the case when transferring files by Explorer, etc.

WMP10 (DRM10): For the case when transferring music distribution data (in WMA format) which uses DRM10 copyright protection to the Player.

CLOCK

Displays the date and time currently.



To cancel this mode, press [MENU] once or press [●] (for at least 2 seconds) while the clock is displaying.

EXIT

To exit from the menu mode.

Troubleshooting guide

Symptom

Possible cause

Corrective action

The player does not start.

Charging battery has run down.

Charge the built-in battery.

Internal HDD error.

Format (initialize) the internal HDD.

Buttons do not respond.

The hold function is set.

Turn off the function.

The USB cable is still connected.

Disconnect the USB cable.

No sound.

The volume is turned down too low.

Adjust the volume.

Files cannot be played (correctly or at all).

The file is not in a playable format.

Use MP3 (MPEG1 Audio Layer3)/WMA-format files.

“MPEG1 Audio Layer2” cannot be played.

In this case,

Please convert from “MPEG1 Audio Layer2” to MP3 file or get MP3 (MPEG1 Audio Layer3) file.

Files on the PC were not transferred to the MUSIC folder.

Transfer them to the MUSIC folder on [Removable Disk].

This is data which cannot be played on the player.

Create a file using different encoder (MP3/WMA conversion) software.

In selection of music piece, it is impossible to make a search for artist, album and genre.

The database of the transferred musics is not created.

Create the database of the pieces of music transferred by [MusicFileMaster].

For detailed information of recreation of database, please refer to the on-line help of [MusicFileMaster].

Having Problems with WMA files?

On-line Purchased Music

DRM: Digital Rights Management: a copyright security protection system that is used in WMA music files sold over the internet. This systems disables illegal copying of music. Music data sold over the internet are normally copyright protected using either DRM (version 10) or PD-DRM (version 9).

For Windows XP User: A DRM (ver 10) copyright protected WMA music file purchased over the internet will play on the HDP-M3000 player if such music file is transferred from your PC to the player using Windows Media Player (ver 10), which is a data file management/player/transfer software that comes with your Windows XP.

For Windows 2000, Windows Me user: Since your OS will not support Windows Media Player (ver 10), the WMA music file which is either copyright protected and/or purchased over the internet, can be transferred from your PC to the HDP-M3000 player, however, the player will not be able to recognize that particular music file and thus will not play.

Symptom

Possible cause

Corrective action

The Removable Disk is not displayed when the player is connected to the PC.

The PC and the player are not connected correctly.

Make sure the connect is corrected.

Disconnect the USB cable from the PC and reconnect it again.

Sufficient power is not being supplied from the PC.

If a USB hub is being used, reconnect the player directly to the USB port on the PC. If the PC is equipped with several different USB ports, try another port.

A network drive has been assigned.

If a network drive has been assigned, the drive letter (the letters used as drive names) is already taken, so the Removable Disk cannot be created. Change the network drive assignments and reconnect. Talk to your network administrator about reassigning network drives.

Player is not recognised correctly by MusicFileMaster.

MusicFileMaster was started up immediately after formatting the player by PC.

Format it by player and connect the player to your PC before starting up the MusicFileMaster. (Refer to page 19)

Duplicating or “Ripping” CD music file as WMA file

The so-called “Ripping” or duplicating CD music as WMA file. In so doing, be sure to follow the below procedures:

After opening the Windows Media Player,

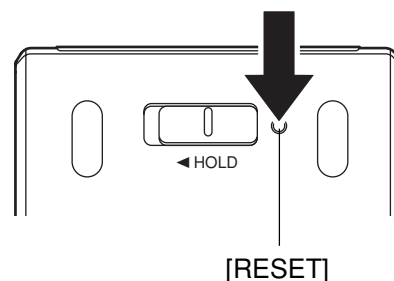
1. Select “Tools” from menu bar.
2. Select “Options”.
3. Under “Copy Settings”, make sure that the box next to “Copy protect music” has no check mark in it. This will allow you to duplicate CD music to WMA format.
4. If checkmark is in the box, it will not allow you to duplicate to WMA format.

WHAT TO DO IF...

If the operation of the player or display is not normal,

1. Press [RESET] using a small ball-point pen, etc.
2. Resume operation.

This operation should not be performed under ordinary circumstances.



Cleaning the cabinet

Clean the outside of the player with a clean soft cloth, moistened with lukewarm water. Do not use benzene, thinner or alcohol since they will mar the finish of the surfaces.

Specifications


Internal HDD: 6 GB

Frequency response (playback): 20Hz - 20kHz

Music playback capability:

MP3 [MPEG1 Audio Layer3] (16 - 44.1kHz, 16 - 192kbps)

WMA [Windows Media Audio] (16 - 44.1kHz, 32 - 160kbps)

Terminals: USB,  (Headphones)

Output power: 8mW + 8mW

Power source: Lithium Ion battery x 1

Full charging time: Approx. 4 hours

Max. Play time: 12 hours

Dimensions (W x H x D): Approx. 51 x 89 x 19 mm

Weight: Approx. 87 g

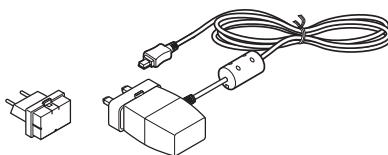
Specifications subject to change without notice.

You can download the latest software, if available, from our web site.

<http://www.sanyo-audio.com/english/index.html>

The optional AC adaptor is available.

Model No.: D-5V-USB



This set complies with the EMC Directive 89/336 and with the LVD Directive 73/23.

SANYO

SANYO Electric Co., Ltd.

Free Manuals Download Website

<http://myh66.com>

<http://usermanuals.us>

<http://www.somanuals.com>

<http://www.4manuals.cc>

<http://www.manual-lib.com>

<http://www.404manual.com>

<http://www.luxmanual.com>

<http://aubethermostatmanual.com>

Golf course search by state

<http://golfingnear.com>

Email search by domain

<http://emailbydomain.com>

Auto manuals search

<http://auto.somanuals.com>

TV manuals search

<http://tv.somanuals.com>