

Shark®

OWNER'S GUIDE

S3101UKM



IMPORTANT SAFETY INSTRUCTIONS

For Household Use Only

WHEN USING YOUR SHARK STEAM MOP, BASIC SAFETY PRECAUTIONS SHOULD ALWAYS BE FOLLOWED, INCLUDING THE FOLLOWING:

WARNING: READ ALL INSTRUCTIONS BEFORE USING YOUR STEAM MOP.



DANGER OF SCALDING.

Please use caution when using the steam mop. The steam emitted from the openings is very hot.

IMPORTANT:

This appliance is not intended for use by persons (including children) with reduced physical, sensory or mental capabilities or lack of experience and knowledge, unless they have been given supervision or instruction concerning the use of the appliance by a person responsible for their safety.

Children should be supervised to ensure that they do not play with the appliance.

WARNING:

TO REDUCE THE RISK OF FIRE, ELECTRIC SHOCK OR INJURY:

1. Use the system only for its intended use.
2. **DO NOT** use outdoors.
3. **DO NOT** leave the appliance unattended when plugged in. Always unplug the power cord from the electrical outlet when not in use and before servicing.
4. **DO NOT** allow the appliance to be used as a toy. Close attention is necessary when used by or near children, pets or plants. **DO NOT** leave appliance unattended while connected.
5. Use only as described in this manual.
6. Use only manufacturer's recommended accessories.
7. **DO NOT** operate the appliance with a damaged plug or cord, or if the unit has been dropped or damaged. To avoid the risk of electric shock, do not disassemble or attempt to repair the appliance on your own. If the supply cord is damaged, it must be replaced by a qualified electrician in order to avoid a hazard. Incorrect re-assembly or repair can cause a risk of electrical shock or injury to persons when the appliance is used.
8. To protect against a risk of electric shock, **DO NOT** immerse the steam mop into water or any other liquids.
9. **DO NOT** handle plug or steam mop with wet hands or operate appliance without shoes.



HELP LINE: 0844 873 0728

10. **DO NOT** pull or carry by power cord, use power cord as handle, close a door on the power cord, or pull the power cord around sharp edges or corners. Keep power cord away from heated surfaces.
11. **DO NOT** unplug by pulling on power cord. To unplug, grasp the plug not the power cord. Do not use extension cords or outlets with inadequate current carrying capacity.
12. **DO NOT** put any objects into openings. Do not use with any opening blocked.
13. **DO NOT** put hands or feet under the steam mop. Unit gets very hot.
14. Use **ONLY** on flat, horizontal surfaces. Do not use on walls, counters or windows.
15. **DO NOT** use on leather, wax polished furniture or floors, synthetic fabrics, velvet or other delicate, steam sensitive materials.
16. **DO NOT** add cleaning solutions, scented perfumes, oils or any other chemicals to the water used in this appliance as this may damage the unit or make it unsafe for use. If you live in a hard water area, we recommend using distilled water in your steam mop.
17. When in use, **NEVER** turn the appliance over or on its side.
18. **NEVER DIRECT STEAM TOWARDS PEOPLE, ANIMALS OR PLANTS.**
19. **NEVER LEAVE THE STEAM MOP IN ONE SPOT ON ANY SURFACE FOR ANY PERIOD OF TIME WHEN MICROFIBRE PAD IS ATTACHED.**
20. Carefully remove the microfibre pad immediately after you have finished using the steam mop.
21. When cleaning the steam mop, unplug the power cord from the electrical outlet and clean with a dry or damp cloth. Do not pour water or use alcohol, benzene or paint thinner on the unit.
22. Extreme caution should be exercised when using this appliance to clean stairs.
23. Never use steam mop without microfibre pad attached.
24. Keep your work area well lit.
25. Store steam mop indoors in a cool, dry place.
26. To avoid circuit overload, do not operate another appliance on the same socket (circuit) as the steam cleaner.
27. If an extension cord is absolutely necessary, an extension cord rated a minimum of 15 ampere, 14 gauge cord should be used. Cords rated for less amperage may overheat. Extension cords over 5 meters in length should not be used. Care should be taken to arrange cord so that it cannot be pulled or tripped over.
28. **DO NOT** leave unattended when the system is connected to a power supply/electrical outlet.
29. **DO NOT** store unit with damp/wet microfibre cleaning pad attached. Never leave the steam mop in one spot on any surface for any period of time with a damp or wet microfibre cleaning pad attached as this will damage your floors.

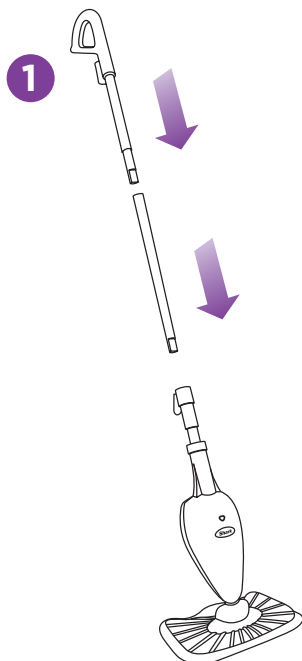
! WARNING: Your steam mop is designed to clean hard floor surfaces that will withstand high heat. Do not use on unsealed wood or unglazed ceramic floors. On surfaces that have been treated with wax or some no wax floors, the sheen may be removed by the heat and steam action. It is always recommended to test an isolated area of the surface to be cleaned before proceeding. We also recommend that you check the use and care instructions from the floor manufacturer.

SAVE THESE INSTRUCTIONS



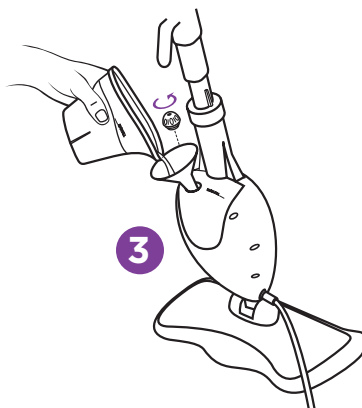
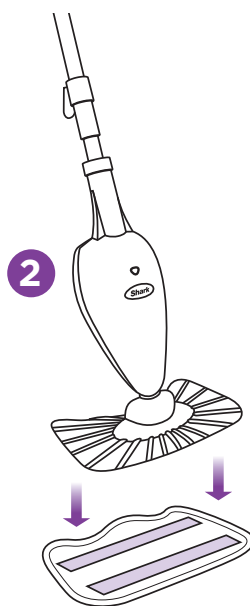
HELP LINE: 0844 873 0728

Quick Start



ASSEMBLE

- 1 Fit together the extension tubes as shown in the illustration. See page 2 for more detailed assembly instructions.
- 2 Place the microfibre cleaning cloth underneath the mop head, with quick fastener strips facing up. Simply press the pad to the mop to attach it.

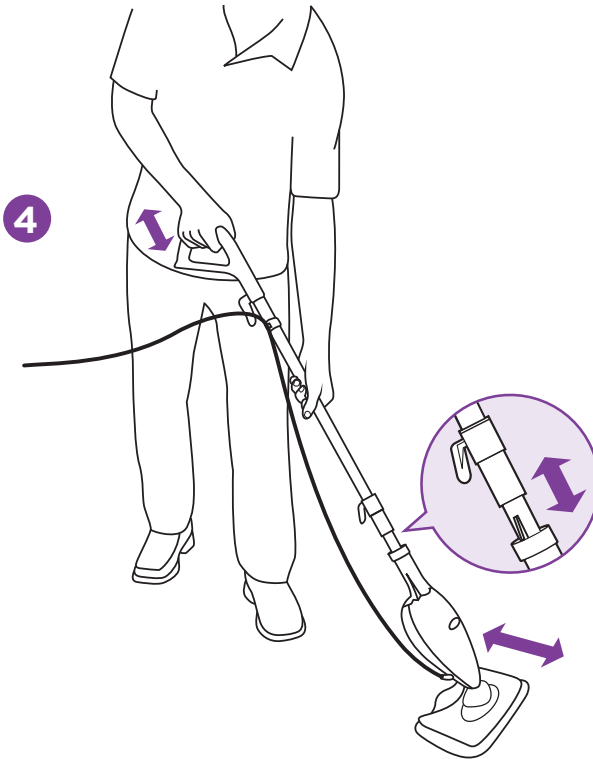


FILL

- 3 Remove the cap to fill the Water Tank. Using the filling flask and funnel, fill the tank, keeping the water under the "MAX FILL" line. Don't forget to replace the cap.



HELP LINE: 0844 873 0728



PRIME STEAM

- 5** Plug in the mop. Wait approximately 30 seconds for the unit to heat up and the steam to be ready.

Push the handle toward the mop head in a pumping motion. To prime simply pump the handle 10-15 times to generate the steam.

⚠ QUICK TIP: Customise steam output by slow or fast mopping with a forward and backward motion.



HELP LINE: 0844 873 0728



This appliance complies with the WEEE-Directive 2002/96/EC on the disposal of electrical and electronic equipment (WEEE).

This appliance complies with the European directives for electromagnetic compatibility (EMC) 2004/108/EC and its revisions, as well as Low Voltage Directive (LVD) 2006/95/EC and its revisions.



This marking indicates that this product should not be disposed with other household wastes throughout the EU. To prevent possible harm to the environment or human health from uncontrolled waste disposal, recycle it responsibly to promote the sustainable reuse of material sources. To return your used device, please use the return and collection systems or contact the retailer where this product was purchased. They can take this product for environmental safe recycling.

This product has no on/off switch and operates when plugged into the main supply source. Disconnect the plug from mains after use.

Although the product is not provided with standby mode or off mode, it still fulfills the requirements of 1275/2008/EC - the directive for Eco-Design requirements since according to technical justification, it is considered as inappropriate to provide standby and off modes when connecting to mains. To reduce energy consumption be sure to unplug the unit after use.



THIS BOOK COVERS MODEL NUMBER:

S3101UKM 11

TECHNICAL SPECIFICATIONS

Voltage: 220-240V~, 50/60Hz.

Power: 1550 Watts

Water Capacity: 250 ml



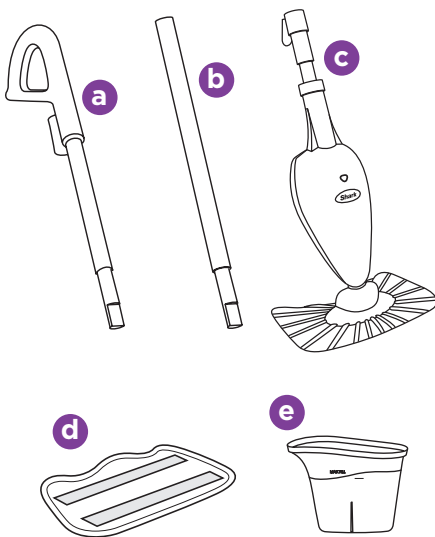
Contents

Thank you for
purchasing
the Shark
Steam Mop.

GETTING STARTED	2
USING YOUR STEAM MOP	6
CARE OF YOUR STEAM MOP	8
TROUBLESHOOTING	9

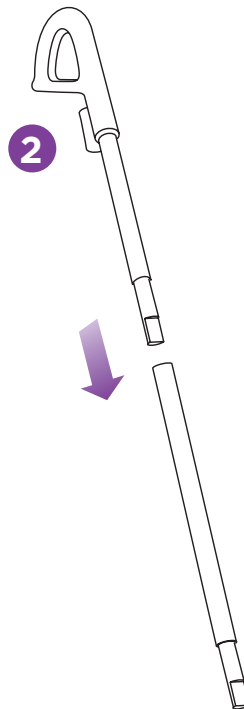
Getting Started

When assembling your steam mop there may be a little water in or around the water tank. This is because we test all our steam mops 100% before you buy them, so you get a quality Shark® Steam Mop.



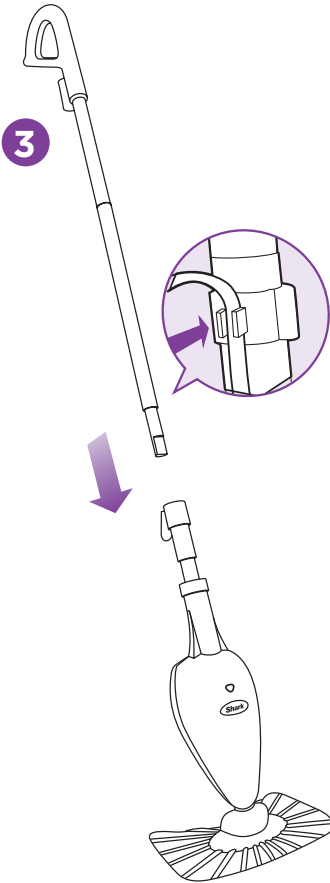
FIRST THINGS FIRST, YOU NEED TO KNOW WHAT'S IN THE BOX YOU JUST OPENED:


- a Upper Extension Tube
- b Lower Extension Tube (Telescopic)
- c Steam Mop Base
- d 2 Microfibre Pads
- e Filling Flask

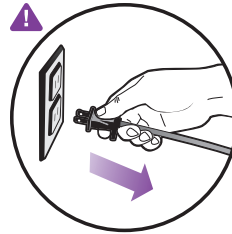


YOUR SHARK STEAM MOP IS EASY TO ASSEMBLE

- 1 First remove all the parts from the package. We know you're excited about the Shark Steam Mop, but don't plug it in until it's fully assembled and you've read all of the following instructions.
- 2 Slide the upper extension tube (the tube with the handle) into the lower extension tube (the short tube). Push the two extension tubes together until you hear it click into place. See illustration for a visual explanation.



 Always attach the microfibre cleaning pad to the mop head or you may scratch your floor surface.



Note: Plug supplied may vary depending on region.

3 Insert the pieces you assembled in Step 2 into the pump actuator (the tube that leads to the tank). Push the extension tube assembly and pump actuator together in until you hear it click into place. Insert cord into cord clip on the shaft of the steam-mop.

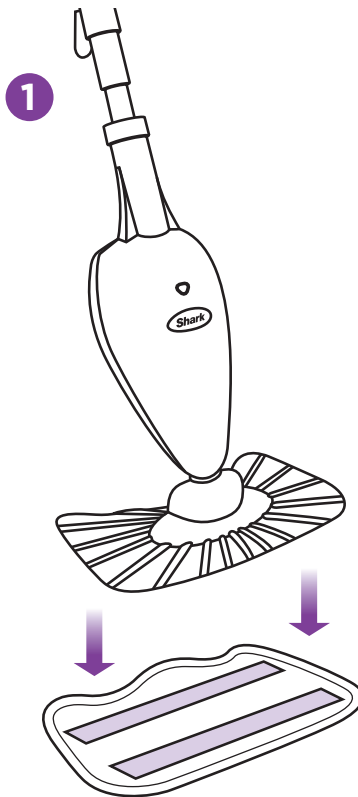
▲ IMPORTANT: Always make sure that your Steam Mop is unplugged from the wall before you attach the microfibre cleaning pad.



HELP LINE: 0844 873 0728

3

Getting Started




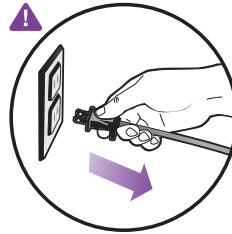
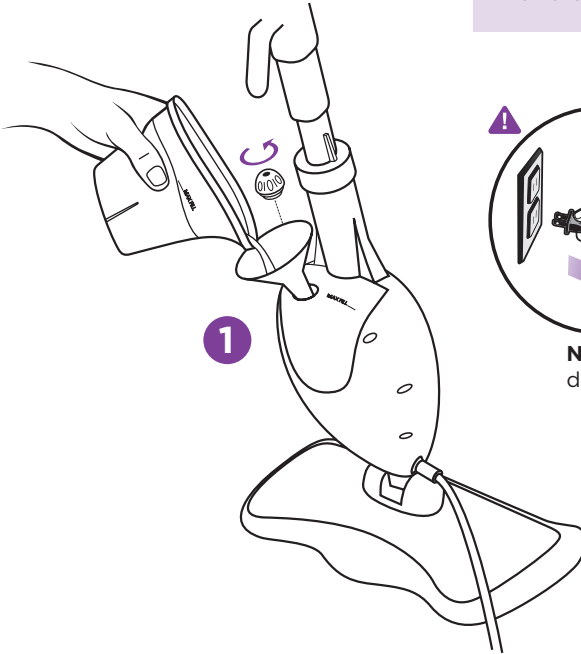
PLACING THE MICROFIBRE PAD

- 1 Place the microfibre cleaning cloth underneath the mop head, with the quick fastener strips facing up. Simply press the pad on to the Steam Mop.

▲ IMPORTANT: Make sure you only add water to the tank. Chemicals or cleaning solution may damage the appliance and could be unsafe for you and your family.

▲ NOTE: Don't be alarmed if the first time you use your Steam Mop, you notice water inside the water tank or drops of water in the packaging. It's normal to see this water. Your Steam Mop was 100% tested in the factory to ensure your safety and your floor's happiness. If you see water in the unit, it's from these tests.

 The water tank cap has an arrow to indicate the locked and unlocked position.



Note: Plug supplied may vary depending on region.

FILLING THE WATER TANK

⚠ IMPORTANT: Before you fill up the tank, make sure your Steam Mop is unplugged from the wall.

1 First, remove the water tank cap by turning it counter clockwise to the unlocked position. See illustration for a visual explanation.

2 The filling flask and funnel included with your Steam Mop make filling the water tank as simple as getting a glass of water from the sink. Fill the flask with water and use the funnel to pour it into the tank. Be sure to keep the water under the MAX FILL line; just one flask of water is enough for your Steam Mop. See illustration for a visual explanation.

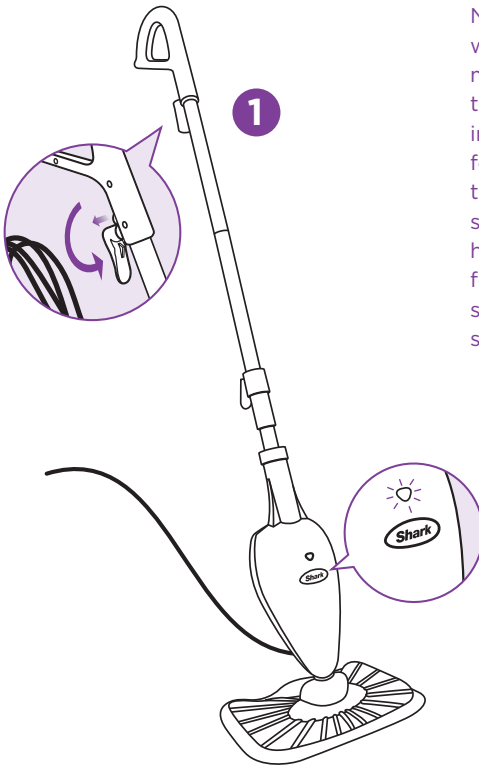
3 Replace the water tank cap by turning it clockwise to the locked position.



HELP LINE: 0844 873 0728

5

Using Your Steam Mop




Now comes the part you've been waiting for – it's time to use your steam mop. When you use your steam mop for the first time or haven't used the unit in awhile, it may take a minute or two for the water to make its way through the pump and into the heater to create steam. Get it started by pumping the handle a few times. If you've waited a few minutes and you still don't see any steam, reference the troubleshooting section on page 9.

▲ IMPORTANT: Your Steam Mop needs water to make steam! Never use your Steam Mop without water in the tank.

Sweep or vacuum your floors before using your Steam Mop. Your Steam Mop was designed to get rid of stuck-on gunk, grime, paw/footprints and it will do a better job if yesterday's cereal crumbs aren't in the way.

1 Pull and twist the quick release cord holder to unwrap the power cord completely. Plug into a 220-240 volt electrical outlet. The "On" light will turn green. Success! If your light doesn't turn on reference the Troubleshooting section on page 9.



 When your Steam Mop stops steaming, it could be out of water. Unplug the power cord from the electrical outlet and refill the water tank at anytime.

- 2** It takes about 30 seconds for the steam to get going. Now pump the handle a few times to prime the pump and activate steam.
- 3** Mop with a forward and backward motion to customise steam output automatically.

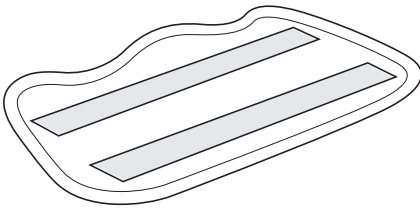
▲ IMPORTANT: When your floors are sparkling clean and you're finished with your Steam Mop, unplug it from the electrical outlet and carefully remove the microfibre cleaning pad from the mop head. Always remove the microfibre cleaning pad from the mop head when you have finished using your Steam Mop to avoid damage to your floors. The steam will make your microfibre cleaning pad very hot. You may want to wait a couple of minutes to let it cool off before you remove it.




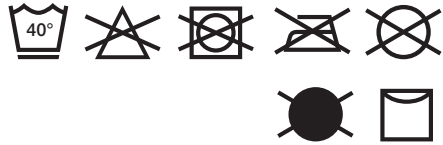
HELP LINE: 0844 873 0728

7

Care of Your Steam Mop



 Always remove the microfibre cleaning pad from the Steam Mop head when you store your Steam Mop to avoid damage to your floors.






KEEPING YOUR MICROFIBRE CLEANING PAD AS GOOD AS NEW

Your steam activated microfibre cleaning pad works wonders for you, so return the favour by giving it the care it deserves.

- 1 Wash pad in warm water. Wash separately from other laundry.
Only use liquid detergent (no powder detergent). Don't use any fabric softeners.
Line dry. Do not tumble dry.
- 2 If there are loose threads on the pad carefully cut the thread with scissors. Don't pull on them or cut at the base.

KEEPING YOUR STEAM MOP IN TIP-TOP SHAPE

If you love your Steam Mop, let it show. Caring for your Steam Mop and properly storing it means you'll get the same super steam action you expect each time you use it.

-  **IMPORTANT:** Both your Steam Mop and the water inside it can get very hot, so let it cool down completely before you store it.
-  **IMPORTANT:** Always store the Steam Mop in a safe place away from children and high traffic areas.
-  **NOTE:** It's a good idea to use distilled water in your tank to help prolong the life of your Steam Mop, especially if you live in an area with hard water.

Trouble Shooting

PROBLEM	POSSIBLE REASONS & SOLUTIONS
<p>The Steam Mop will not turn-on.</p>	<p>Your steam-mop should be securely plugged into a 220-240V electrical outlet only.</p> <p>Check your fuse or breaker.</p>
<p>Steam Mop will not make steam.</p>	<p>Is there water in the water tank? If not, add water to your Steam Mop following instructions.</p>
<p>Steam Mop leaves water on the floor.</p>	<p>Is your microfibre cleaning pad too wet? Why don't you unplug your Steam Mop and change the microfibre cleaning pad.</p>
<p>Steam Mop left white spot on the floor.</p>	<p>Don't leave your steam-mop on the floor with a damp or wet cleaning pad.</p> <p>Do you have hard water? If you do you might want to switch to distilled water.</p>
<p>Floors are cloudy, streaky or spotty after steaming.</p>	<p>The pad might be dirty, change or wash the pad.</p> <p>If you washed the pocket with powder detergent then the pad might have residual detergent left on it. Wash it again with liquid detergent.</p> <p>If you are cleaning in a kitchen area where there might be a build-up of grease then use a degreasing agent such as an all-purpose cleaner or dish soap and paper towels to clean the area first.</p> <p>You might have left the mop in the same spot for too long.</p> <p>Do you have hard water? If you do you might want to switch to distilled water.</p> <p>This might be leftover from past cleaners used on the floor surface. Use the steam mop a few more times and see if the leftover cloudiness is removed.</p>
<p>Steam Mop is hard to push.</p>	<p>Make sure the cleaning pad is on properly.</p>



HELP LINE: 0844 873 0728

The After Sales Division
Mexborough
South Yorkshire
England
S64 8AJ

Technical Details:

Model number: S3101UKM 11

Input: 1550 Watts

Main unit voltage: 220-240V~, 50/60 Hz

COPYRIGHT© EURO-PRO OPERATING LLC 2012

PRINTED IN CHINA

S3101UKM.E.120906.1

Illustrations may differ from actual product.



Free Manuals Download Website

<http://myh66.com>

<http://usermanuals.us>

<http://www.somanuals.com>

<http://www.4manuals.cc>

<http://www.manual-lib.com>

<http://www.404manual.com>

<http://www.luxmanual.com>

<http://aubethermostatmanual.com>

Golf course search by state

<http://golfingnear.com>

Email search by domain

<http://emailbydomain.com>

Auto manuals search

<http://auto.somanuals.com>

TV manuals search

<http://tv.somanuals.com>