

Shark®

WWW.SHARKCLEAN.COM

**HANDHELD STEAM
SCRUBBER**

S3401

OWNER'S GUIDE



IMPORTANT SAFETY INSTRUCTIONS

SAVE THESE INSTRUCTIONS

For Household Use Only

WHEN USING YOUR **SHARK®** HANDHELD STEAM SCRUBBER, BASIC SAFETY PRECAUTIONS SHOULD ALWAYS BE FOLLOWED, INCLUDING THE FOLLOWING:

WARNING: TO REDUCE THE RISK OF FIRE, ELECTRIC SHOCK OR INJURY READ ALL INSTRUCTIONS BEFORE USING YOUR HAND STEAMER.



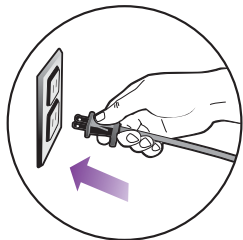
DANGER OF SCALDING.

Use caution when using the steam cleaner. The steam emitted from the openings is very hot.

POLARIZED PLUG:

TO REDUCE THE RISK OF ELECTRIC SHOCK, this appliance has a polarized plug (one blade is wider than the other). As a safety feature, this plug will fit into a polarized outlet only one way. If the plug does not fit fully into the outlet, reverse the plug. If it still does not fit, contact a qualified electrician.

Do not attempt to defeat this safety feature.



1. Use the system only for its intended use.
2. **DO NOT** use outdoors.
3. **DO NOT** leave the appliance unattended when plugged in. Always unplug the power cord from the electrical outlet when not in use and before servicing.
4. **DO NOT** allow the appliance to be used as a toy. Close attention is necessary when used by or near children, pets or plants.
5. Use only as described in this manual.
6. Use only manufacturer's recommended accessories.
7. **DO NOT** operate the appliance with a damaged plug or cord, or if the unit has been dropped, damaged left outdoors or dropped into water. To avoid the risk of electric shock, do not disassemble or attempt to repair the appliance on your own.
8. To protect against a risk of electric shock, **DO NOT** immerse the steam cleaner into water or any other liquids.
9. **DO NOT** handle plug or steam cleaner with wet hands or operate appliance without shoes.
10. **DO NOT** pull or carry by power cord, use power cord as handle, close a door on the power cord, or pull the power cord around sharp edges or corners. Keep power cord away from heated surfaces.
11. **DO NOT** unplug by pulling on power cord. To unplug, grasp the plug not the power cord. Do not use extension cords or outlets with inadequate current carrying capacity.
12. **DO NOT** put any objects into openings. Do not use with any opening blocked.
13. **DO NOT** put hands or feet under the steam cleaner. Unit gets very hot.
14. Use **ONLY** on flat, stable surfaces.
15. **DO NOT** use on leather, wax polished furniture or floors, synthetic fabrics, velvet or other delicate, steam sensitive materials.
16. **DO NOT** add cleaning solutions, scented perfumes, oils or any other chemicals to the water used in this appliance as this may damage the unit or make it unsafe for use. If you live in a hard water area, we recommend using distilled water in your hand steamer.
17. When in use, **NEVER DIRECT STEAM TOWARDS PEOPLE, ANIMALS OR PLANTS.**
18. Carefully remove the micro-fiber pad immediately after you have unplugged the hand steamer and allowed the product to cool.
19. When cleaning the hand steamer, unplug the power cord from the electrical outlet and clean with a dry or damp cloth. Do not pour water or use alcohol, benzene or paint thinner on the unit.
20. To reduce the risk of fire, **DO NOT** use a flammable or combustible liquid to clean a floor.
21. Extreme caution should be exercised when using this appliance to clean stairs.
22. Never use hand steamer without micro-fiber pad attached.
23. Keep your work area well lit.
24. Store indoors in a cool, dry place.
25. To avoid circuit overload, do not operate another appliance on the same socket (circuit) as the steam cleaner.
26. If an extension cord is absolutely necessary, an extension cord rated a minimum of 15 ampere, 14 gage cord should be used. Cords rated for less amperage may overheat. Care should be taken to arrange cord so that it cannot be pulled or tripped over.
27. **DO NOT** leave unattended when the system is connected to a power supply or electrical outlet. Turn off all controls before unplugging the unit.
28. **DO NOT** store unit with damp or wet micro-fiber cleaning pad attached. Never leave the hand steamer in one spot on any surface for any period of time with a damp or wet micro-fiber cleaning pad attached as this will damage your surfaces.



WARNING: Your hand steamer is designed to clean your hard surfaces that will withstand high heat. Do not use on unsealed wood or unglazed ceramics. On surfaces that have been treated with wax or some no wax floors, the sheen may be removed by the heat and steam action. It is always recommended to test an isolated area of the surface to be cleaned before proceeding. We also recommend that you check the use and care instructions from the surface manufacturer.



TOLL FREE: 1-800-798-7398

www.sharkclean.com

Thank you for purchasing the **Shark®** Handheld Steam Scrubber.

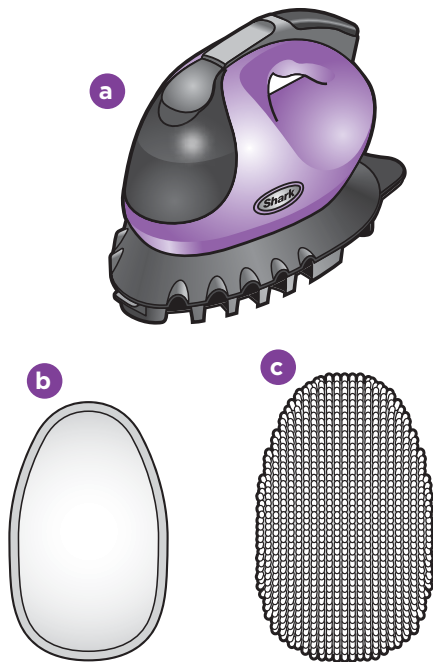
- GETTING STARTED 2
- USING YOUR HAND STEAMER 4
- CARE OF YOUR HAND STEAMER 5
- TROUBLESHOOTING 6
- WARRANTY AND REGISTRATION..... 7

TECHNICAL SPECIFICATIONS

Voltage: 120V., 60Hz.
 Power: 1000 Watts
 Water Capacity: 240 ml (8 oz.)



When assembling your Shark® Handheld Steam Scrubber there may be a little water in or around the water tank. This is because we test all our steam cleaners 100% before you buy them, so you get a quality hand steamer.



- a Hand Steamer
- b 1 Micro-Fiber Cleaning Pad
- c 1 Micro-Fiber Cleaning Bonnet

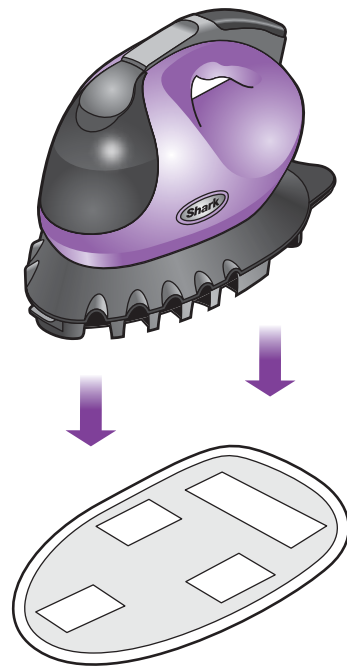


fig. 1

ATTACHING THE MICRO-FIBER PAD

- 1 Place the micro-fiber cleaning pad on a flat surface with the quick fastener strips facing up. Place the hand steamer on the top of the pad to attach (fig. 1).
- ⚠ IMPORTANT:** Never use the hand steamer without attaching a micro-fiber cleaning pad or bonnet to avoid damage to your hard surfaces.

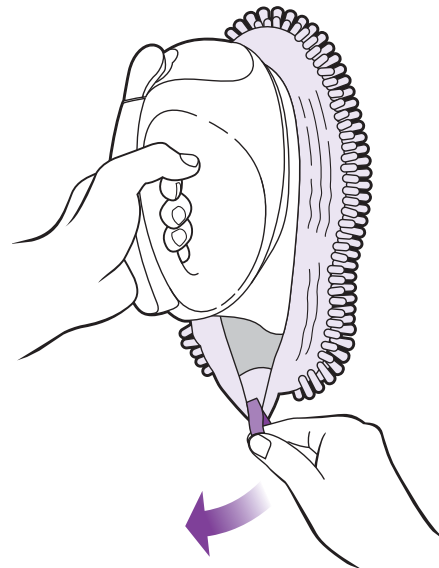


fig. 2

ATTACHING THE MICRO-FIBER BONNET

- 1 Align bonnet and hand steamer so that the purple tag is at the rear of the hand steamer. Insert front of the hand steamer into the bonnet and use the purple tag to gently pull bonnet over the base of the hand steamer (fig. 2).

Replacement micro-fiber pads and bonnets are available at www.sharkclean.com or by calling 1-800-798-7398.

TIPS Use the pad for quick clean up and use the shaggy bonnet for scrubbing heavier messes.

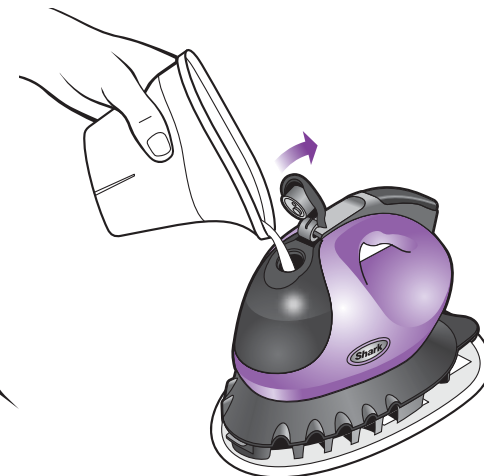


fig. 3

FILLING THE WATER TANK

- 1 Open the water tank cap by lifting the cap up to the open position (fig. 3).
- 2 A filling flask is included with your Vac-Then-Steam™ and hand steamer to make filling the water tank easy. Fill the flask with water and use the funnel to pour it into the tank. Keep the water level under the MAX FILL line.
- 3 Close the water tank cap by pressing the cap down to the closed position.

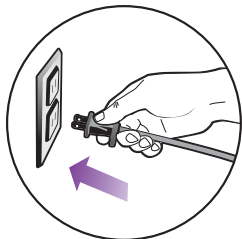


fig. 1

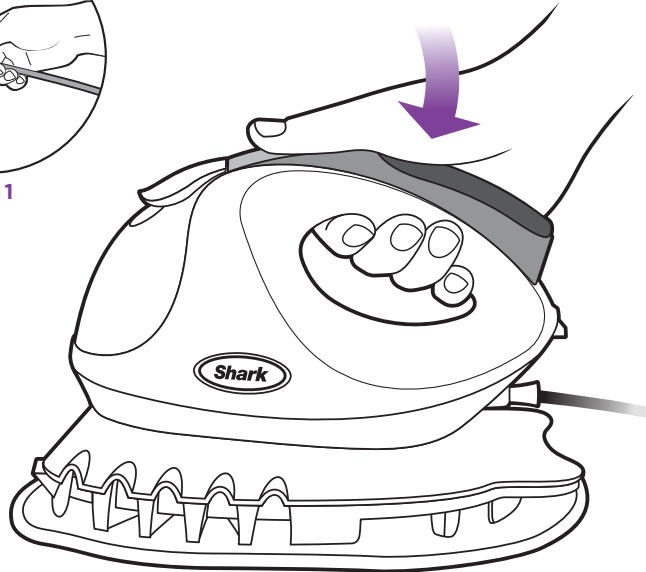


fig. 2

▲ IMPORTANT: Your hand steamer needs water to make steam! Never use your hand steamer without water in the tank.

Remove any large debris from the surface prior to cleaning with your hand steamer.

Visit www.sharkclean.com for other great steam cleaning products to complement your hand steamer.

- 1 Plug into a 120-volt electrical outlet (**fig. 1**). The “On” light will turn blue. If the light does not turn on, reference the troubleshooting section on page 6.
- 2 Wait 30 seconds for the boiler to heat the water. Pump the handle a few times to prime the pump, activate steam and moisten the micro-fiber pad (**fig. 2**).
- 3 Pump the handle as you clean your sealed surfaces to customize steam output.

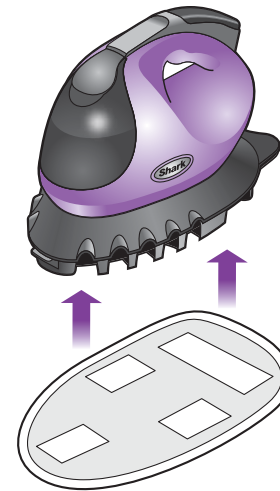


fig. 3



fig. 4



fig. 5

AFTER USE AND STORAGE

- 1 When you have finished using the Shark® Handheld Steam Scrubber, unplug the cord from the outlet and stand the hand steamer upright as you would an iron. Let the unit cool 2-3 minutes.
- 2 Carefully separate micro-fiber cleaning pad or bonnet from steam cleaner (**fig. 3**).
- 3 Empty the water tank before storage. Open the water tank cap and empty the tank over a sink. Close the water cap (**fig. 4**).
- 4 Wrap the power cord completely around the base of the hand steamer (**fig. 5**).

CARE OF YOUR MICRO-FIBER CLEANING PAD & BONNET

- 1 Wash pads in warm water. Wash separately from other laundry. Only use liquid detergent (no powder detergent). Do not use fabric softeners. Line dry or dry on a low dryer setting.
 - 2 If there are loose threads on the pad carefully cut the threads with scissors. Do not pull on them or cut at the base
- ▲ IMPORTANT:** The micro-fiber cleaning pad may be very hot from the steam. Use caution when removing. Let the unit cool for 2-3 minutes.

PROBLEM	POSSIBLE REASONS & SOLUTIONS
The hand steamer will not turn-on.	Your hand steamer should be securely plugged into a 120V AC electrical outlet only. Check your fuse or breaker. If your unit still does not work, call 1-800-798-7398
Hand steamer will not make steam.	Is there water in the water tank? If not, add water to your hand steamer following instructions on page 3.
Hand steamer leaves water on the surface.	Is your micro-fiber cleaning pad too wet? Unplug your hand steamer and change the micro-fiber cleaning pad.
Hand steamer left a white spot on the surface.	Do not leave your hand steamer on the surface with a damp or wet cleaning pad. Rest the hand steamer upright when not in use. Do you have hard water? If you do, you might want to switch to distilled water.
Surfaces are cloudy, streaky or spotty after steaming.	The pad might be dirty, change the pad. If you washed the pad with powder detergent, then the pad may have residual detergent left on it. Wash it again with liquid detergent. If you are cleaning in a kitchen area where there might be a build-up of grease, use a de-greasing agent such as an all-purpose cleaner or dish soap and paper towels to clean the area first. You might have left the hand steamer in the same spot for too long. Do you have hard water? If you do, use distilled water in your cleaning system.. This might be leftover from past cleaners used on the floor surface. Use the hand steamer a few more times and see if the leftover cloudiness is removed.
Hand steamer is hard to push.	Make sure the steam pad or bonnet is attached correctly. Check to see if the cleaning pad is excessively dirty. Replace if the pad is too dirty or wet.

ONE (1) YEAR LIMITED WARRANTY

EURO-PRO Operating LLC warrants this product to be free from defects in material and workmanship for a period of one (1) year from the date of the original purchase, when utilized for normal household use, subject to the following conditions, exclusions and exceptions.

If your appliance fails to operate properly while in use under normal household conditions within the warranty period, return the complete appliance and accessories, freight prepaid. For Customer Service support, call 1 (800) 798-7398 or visit our website www.sharkclean.com.

If the appliance is found to be defective in material or workmanship, **EURO-PRO Operating LLC** will repair or replace it free of charge. Proof of purchase date and check made payable to **EURO-PRO Operating LLC** in the amount of \$9.95 to cover the cost of return shipping and handling must be included.

The liability of **EURO-PRO Operating LLC** is limited solely to the cost of the repair or replacement of the unit at our option. This warranty does not cover normal wear of parts and does not apply to any unit that has been tampered with or used for commercial purposes. This limited warranty does not cover damage caused by misuse, abuse, negligent handling or damage due to faulty packaging or mishandling in transit. This warranty does not cover damage or defects caused by or resulting from damages from shipping or repairs, service or alterations to the product or any of its parts, which have been performed by a repair person not authorized by **EURO-PRO Operating LLC**.

This warranty is extended to the original purchaser of the unit and excludes all other legal and/or conventional warranties. The responsibility of **EURO-PRO Operating LLC** warranty if any, is limited to the specific obligations expressly assumed by it under the terms of the limited warranty. **In no event is EURO-PRO Operating LLC** liable for incidental or consequential damages of any nature whatsoever. Some states/provinces do not permit the exclusion or limitation of incidental or consequential damages, so the above may not apply to you.

This warranty gives you specific legal rights, and you may also have other rights which vary from state to state or province to province.

***Important: Carefully pack item to avoid damage in shipping. Be sure to include proof of purchase date and to attach tag to item before packing with your name, complete address and phone number with a note giving purchase information, model number and what you believe is the problem with the item. We recommend you insure the package (as damage in shipping is not covered by your warranty). Mark the outside of your package "ATTENTION CUSTOMER SERVICE". We are constantly striving to improve our products, therefore the specifications contained herein are subject to change without notice.**



OWNERSHIP REGISTRATION CARD FOR CANADIAN CONSUMERS ONLY

Please complete and return within ten (10) days of purchase. The registration will enable us to contact you in the event a product defect is discovered. By returning this card you acknowledge to have read and understood the instructions for use, and warnings set forth in the accompanying instructions.

RETURN TO: **EURO-PRO Operating LLC**, 4400 Bois Franc, St. Laurent, Quebec H4S 1A7

PURCHASER:

ADDRESS:

DATE OF PURCHASE: MODEL: **S3401**

NAME AND ADDRESS OF STORE:

U.S.: EURO-PRO Operating LLC
Newton, MA 02459

Canada: EURO-PRO Operating LLC
4400 Bois Franc
Ville St. Laurent, Québec H4S 1A7

1-800-798-7398

www.sharkclean.com

COPYRIGHT © EURO-PRO OPERATING LLC 2010

PRINTED IN CHINA REV. 100401

Illustrations may differ with actual product.

Free Manuals Download Website

<http://myh66.com>

<http://usermanuals.us>

<http://www.somanuals.com>

<http://www.4manuals.cc>

<http://www.manual-lib.com>

<http://www.404manual.com>

<http://www.luxmanual.com>

<http://aubethermostatmanual.com>

Golf course search by state

<http://golfingnear.com>

Email search by domain

<http://emailbydomain.com>

Auto manuals search

<http://auto.somanuals.com>

TV manuals search

<http://tv.somanuals.com>