

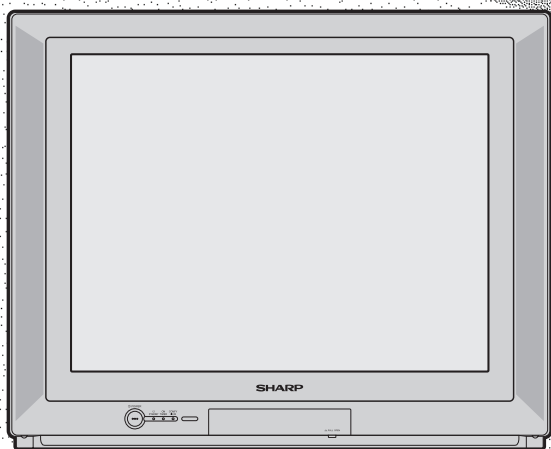
SHARP®

COLOUR TELEVISION

MODEL

CX68RF5

■ OPERATION MANUAL ■



Please read this operation manual carefully before using the colour television.

SHARP

WARRANTY

Consumer Electronic Products

Congratulations on Your Purchase!

This Sharp product is warranted against faults in materials and manufacture for a period of twelve (12) months from the date of original purchase.

If service is required during the warranty period, please contact your nearest Sharp Approved Service Centre. These repairs would be carried out at no charge to the owner, subject to the conditions specified herein.

The owner is responsible for any transportation and insurance costs if the product has to be returned for repair.

This warranty does not extend to accessories or defects or injuries caused by or resulting from causes not attributable to faulty parts or the manufacture of the product, including but not limited to, defect or injury caused by or resulting from misuse, abuse, neglect, accidental damage, improper voltage, liquid spillage, vermin infestation, software, or any alterations made to the product which are not authorised by Sharp.

Please retain your sales documentation, as this should be produced to validate a warranty claim.

This warranty is in addition to and in no way limits, varies or excludes any express and implied rights and remedies under any relevant legislation in the country of sale.

IMPORTANT

DO NOT RETURN THIS DOCUMENT TO SHARP

For your reference, please enter the particulars of your purchase below and retain, with your purchase documentation.

Model No. _____

Serial No. _____

Date of Purchase _____

Retailer _____

FOR LOCATION ENQUIRIES WITHIN

AUSTRALIA

REGARDING YOUR LOCAL

SHARP APPROVED SERVICE CENTRE

VISIT OUR WEBSITE AT

www.sharp.net.au

OR CALL SHARP CUSTOMER CARE

1 300 135 022

(LOCAL CALL COST APPLY WITHIN AUSTRALIA)

SHARP CORPORATION OF AUSTRALIA PTY. LIMITED

ABN 40 003 039 405
1 Huntingwood Drive
Huntingwood NSW 2148

FOR LOCATION ENQUIRIES WITHIN

NEW ZEALAND

REGARDING YOUR LOCAL

SHARP APPROVED SERVICE CENTRE

VISIT OUR WEBSITE AT

www.sharp.net.nz

CONTACT YOUR SELLING DEALER/RETAILER

OR CALL

SHARP CUSTOMER SERVICES

TELEPHONE: 09 573 0111

FACSIMILE: 09 573 0113

SHARP CORPORATION OF NEW ZEALAND LIMITED

59 Hugo Johnston Drive
Penrose, Auckland

IMPORTANT NOTICE: This warranty applies only to products sold in Australia & New Zealand

SHARP

SHARP CORPORATION

Printed in Malaysia
TINS-B509WJZZ
04P10-MSM

Contents

Preparation

Accessories	2
Easy setup	3
Safety precautions	4
Part names	6
Installing batteries in the remote control unit	6

Watching TV

Watching a TV programme	8
Operating the TV buttons	9

Useful features

Clock/Timer/Channel display	10
Mute	10
Sound mode	11
Channel recall	11
TV/Video selection	11

Selecting menu items

Selecting a menu item	12
-----------------------------	----

Settings and adjustments

On-screen display language selection	14
Manual channel tuning	15
Auto channel tuning	16
Channel setting	17
Picture adjustment	21
Sound adjustment	23
Equalizer	24
Blue screen	25
Auto select	26
Comfy view	27
16:9 mode	28
Child lock	29
Demo	32
Clock	33
Day	34
On timer	34
Off timer	36
Reminder on-screen timer	37
View timer	39
Beep reminder	42
Favourite channels	43
FM radio	44

Connections

Connecting to a DVD player	46
Watching DVD Playback	46
Connecting to an antenna	47
Connecting to an antenna via a VCR	47
Connecting to video equipment	48

Troubleshooting

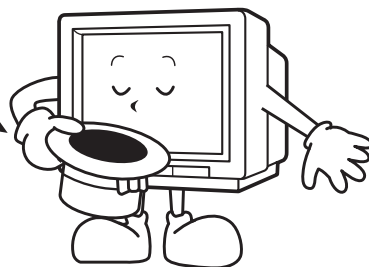
Troubleshooting	49
-----------------------	----

Specifications

Specifications	50
Definition of Terms	51

Dear SHARP Customer

Thank you for buying SHARP's Colour Television. We hope you will have many years of enjoyment from this television set. To ensure proper operation, please read this manual carefully, and keep it in a safe place for future reference.

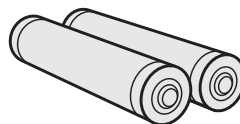


Accessories

The following accessories are included with this television.



Remote control



Size-AA batteries



Operation manual

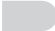


FM Radio antenna

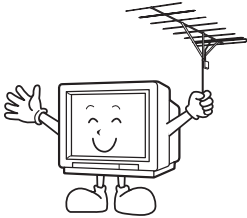


Easy setup


To use your TV set, perform the easy setup procedure below.

The  mark indicates the page numbers with more detailed information.

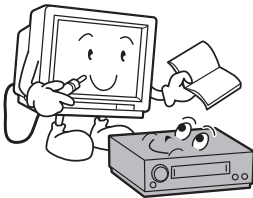
1





Connect the antenna.

- See  to connect the antenna.

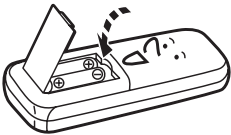
2




Connect any video equipment.

- See  ,  to connect video equipment.
- See the operation manual of your video equipment when connecting to the TV set.

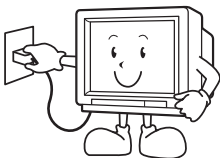
3



Insert the batteries into the remote control.

- Use the two batteries included with the TV.
- See  .

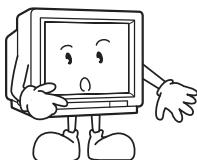
4



Insert the AC plug to the power outlet.

- If you will not use the TV set for a considerable length of time, as a safety precaution, unplug the cord from the outlet.

5

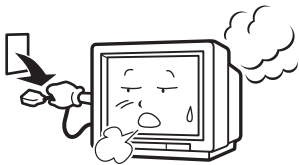


Tune the channels.

- Use the buttons on the TV.
- See  ,  .

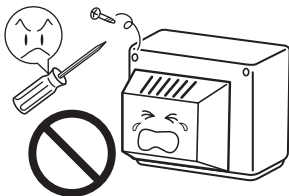


Safety precautions



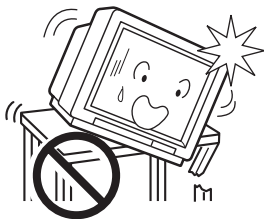
Damage

Turn off the power and unplug the power cord from the wall outlet immediately if the TV set begins to make any unusual noises or gives off smoke or an unusual smell. Then call your dealer for service.



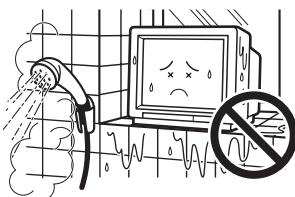
Servicing

To reduce the risk of electric shock, do not remove the back of the cabinet. This TV set contains dangerous voltage.



Unstable surface and shocks

Do not place this TV set on an unstable cart, stand, shelf, or table. The TV set may fall, causing serious injury to a child or adult, and serious damage to the set. Sharp recommends securing the TV set to a stable surface or wall to prevent the set from falling due to sudden shocks or impact.



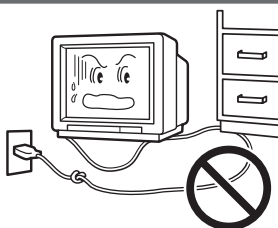
Water

To prevent fire or electrical shock, do not place the TV set near a bathroom, swimming pool or other area where it may become wet.



Moisture

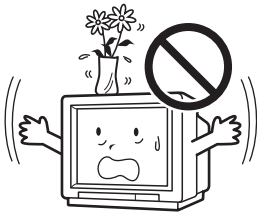
To prevent electrical shock, do not use the TV set in an excessively damp place.



Power-cord protection

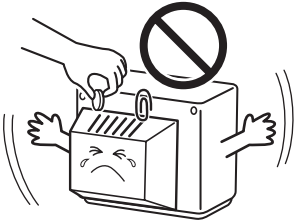
To prevent electrical shock, do not subject the AC power cord to damage by bending or twisting it, or by placing heavy items on top of it and do not place the AC power cord under the TV set. If the AC power cord becomes damaged, unplug it from the wall outlet immediately and call your dealer for service.

Safety precautions



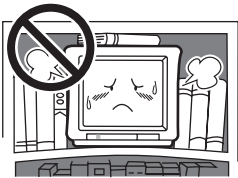
Liquid entry

Do not place a flower vase or anything else containing liquid on the TV set, as liquid spilt on the TV set can cause electrical shock or failure.



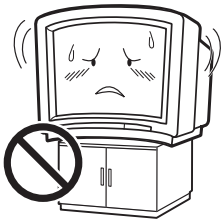
Object entry

Never insert or drop any metallic or inflammable objects into the ventilation openings of the TV set, as this can cause fire, electrical shock, or electrical failure.



Ventilation

Do not place this TV set in a confined area, such as on a bookshelf or in a built-in case. Leave adequate space behind the TV for proper ventilation.



TV Set position

Do place the TV set onto an even stand, table or track which size is bigger than the TV set. If the TV set is put onto a smaller size or uneven stand, table or track may cause the TV cabinet distort. Do not put or insert anything between TV set and the stand, table or track.



Uneven surface and excessive force

Television equipment and cart combination should be moved with care. Quick stops, excessive force, and uneven surfaces may cause the equipment and cart combination to overturn.



Fire prevention

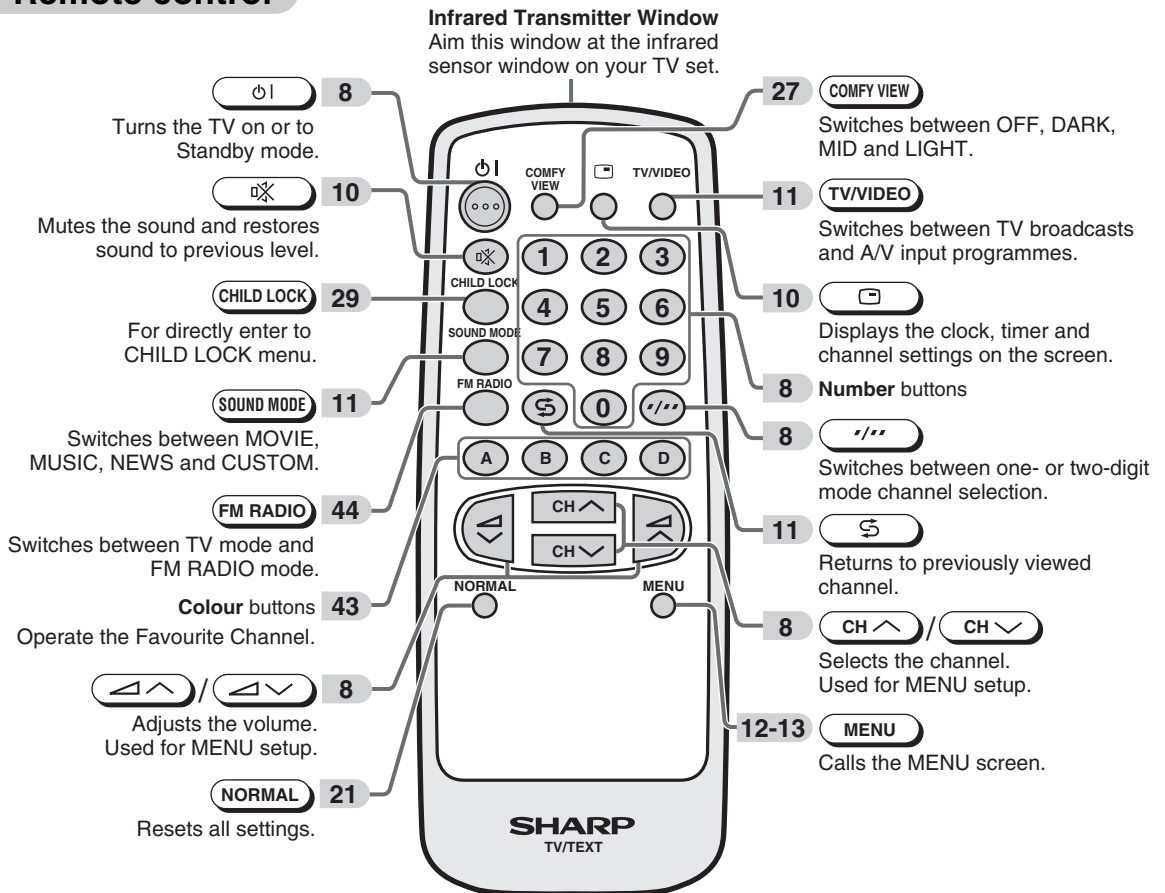
To prevent fire, never place any type of candle or naked flames on the top or near the TV set.



Part names

The **8** mark indicates the page numbers with more detailed information.

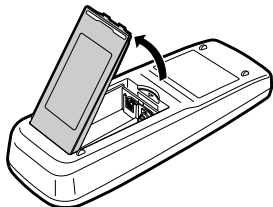
Remote control



Installing batteries in the remote control unit

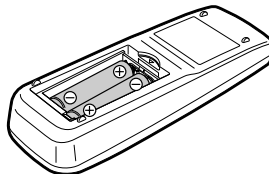
1

With your thumbnail, pull up at the slit to open the battery cover.



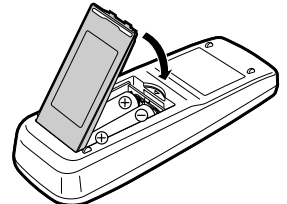
2

Insert two batteries (size AA).



3

Replace the battery cover.

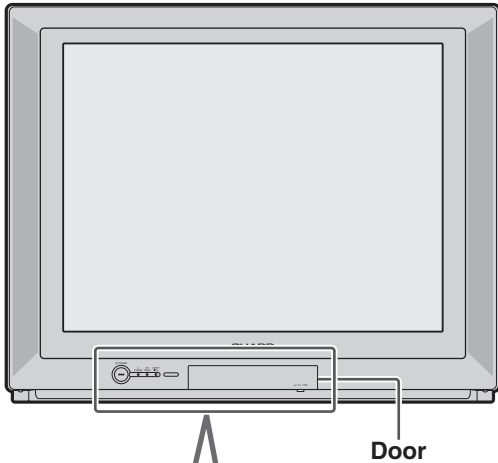


NOTE

- Be sure to match the battery \oplus/\ominus terminals with the \oplus/\ominus marks inside the compartment.
- Remove the batteries if weak or if the unit is not in use for long periods.
- Do not mix old and new batteries.
- Incorrect installation of the batteries may damage the remote control.

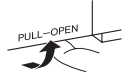
Part names

TV set



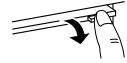
To open the door

Using the projection located under the "PULL-OPEN" indication, pull and lift the door open.



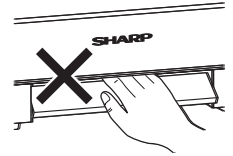
To close the door

Using the projection, lower the door until closed.



Caution:

- When opening or closing the door, do not insert your fingers into the gap between the door and front panel. This may result in an injury.



Bottom

8

① POWER

① POWER switch

Turns the main power on and off.

6

Infrared sensor window

Receives the infrared wave from the remote control.

27

COMFY VIEW sensor

Room brightness sensor.

27

COMFY VIEW indicator

Lights up red when the COMFY VIEW is set to DARK, MID or LIGHT.

35

ON TIMER indicator

Lights up red when the On Timer is set.

8

⏻ STANDBY indicator

Power can be turned on by the remote control when the indicator is lit red.

12

MENU/PRESET

MENU/PRESET button

Used for MENU setup.
Tunes the channels.

8



Volume up/down button

Adjust the volume.
Make adjustments in PRESET.

8



Channel up/down button

Select the channels.
Tune or set the channels.

9

Headphone jack (🎧)

Used to listen to the audio with headphone.
(When using headphone, see 9.)

48

Audio input terminals (AV-3)

Connects to a camcorder, video game, etc.

48

Video input terminal (AV-3)

Connects to a camcorder, video game, etc.

48

S-Video input terminal (SAV3)

Connects to a camcorder, video game, etc.

NOTE

- Minimal electric power remains consumed if the TV is in standby mode.

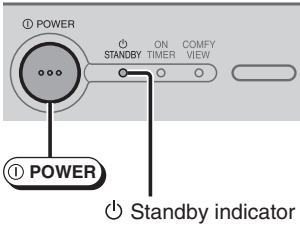


Watching TV

Watching a TV programme

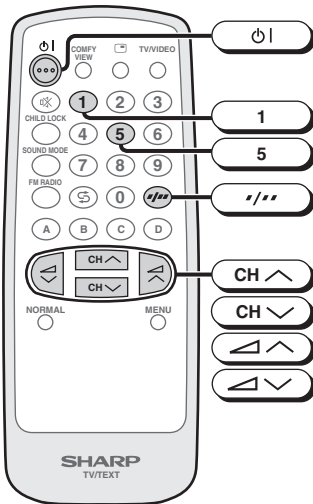
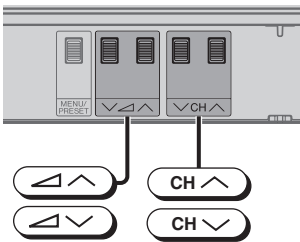
Simple operations for watching a TV programme.

TV Set



Standby indicator

Behind the door



1 Turn on power.

- When the Standby indicator is off, press **POWER**.
- When the Standby indicator is red, press **Standby** on the remote control. The Standby indicator changes to green and a picture appears.

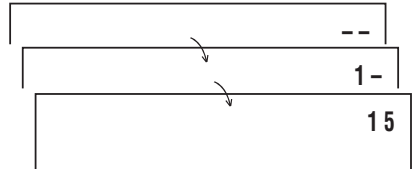
2 Select channel.

With **CH UP** / **CH DOWN**

- Press **CH UP** and channels change as shown below.
1 → 2 → ... → 98 → 99 → AV1 (or SAV1) → AV2 (or COMPONENT) → AV3 (or SAV3) → 0 → 1 → 2 ...
- Press **CH DOWN** and channels change as shown below.
1 → 0 → AV3 (or SAV3) → AV2 (or COMPONENT) → AV1 (or SAV1) → 99 → 98 → ... → 2 → 1 → 0 ...

With the number buttons (on remote control)

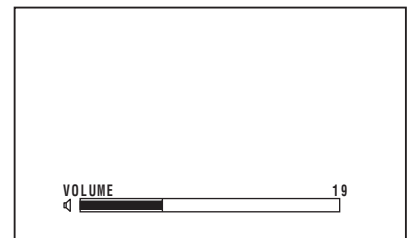
- To select a one-digit channel, such as 5, press **5**.
If "5-" is indicated, press **Input** to select one-digit input, and then press **5** again.
- To select a two-digit channel, such as 15, press **Input** to select the two-digit input. Press **1**, and then press **5**.



3 Adjust volume using

Volume Up / **Volume Down**

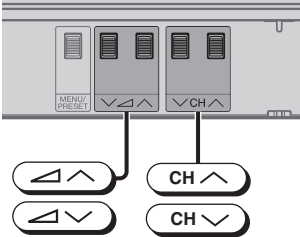
- The volume bar disappears approximately five seconds after the volume has been adjusted.



NOTE

- When the Standby indicator is red, either **CH UP** / **CH DOWN** on the TV can be pressed to turn on the power.
- The channel number is displayed in green for channels tuned by auto tuning and displayed in yellow for channels tuned using fine tuning.
- When the Standby indicator is red, the TV is in Standby mode and power is still supplied to the TV. If you will not watch TV for a while, turn off the main power by pressing **POWER** on the TV set. Also, if you will not be at home for a considerable length of time, unplug the cord from the outlet.
- The AV1 (or SAV1), AV2 (or COMPONENT) and AV3 (or SAV3) input channels can be selected using **TV/VIDEO**.
- Channels that have been skipped cannot be selected by **CH UP** / **CH DOWN**. See **18**.
- The on-screen displays in this manual may differ from their actual appearance.

Behind the door



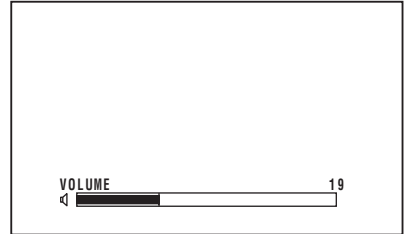
Operating the TV buttons

Simple operation of the TV set.

Using /

Press to increase volume.

Press to decrease volume.



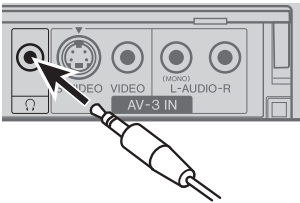
Using /

Press to increase channel number.

Press to decrease channel number.



Behind the door



Using headphone

Insert headphone plug into headphone jack to listen to audio with headphone.

- The audio from the speakers is turned off.

NOTE

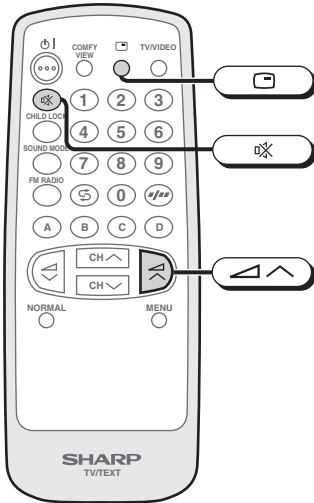
- Select an appropriate volume so as not to injure your hearing.
- To avoid injuring your hearing, do not put on the headphone before plugging them into the headphone jack and before the power is turned on.
- The proper impedance for the headphone is 32 ohms.
- Remove the headphone plug from the jack when not using the headphone.



Useful features

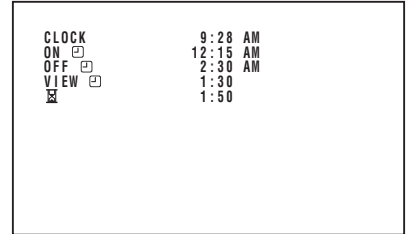
Clock/Timer/Channel display

Displays the clock, the timer, the current channel number and other settings on the screen.



1 Press .

- The clock and the time on the On timer, Off timer, View timer and the remaining time of the Reminder appears on the screen.



2 Press  again.

- The channel number appear on the screen.



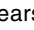
3 Press  once again.

- The display disappears.

Mute

Silences the sound.

1 Press .

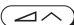
- “” appears on the screen, and the sound is silenced.



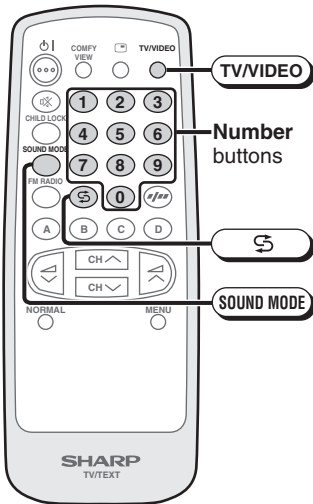
2 Press  again.

- The volume returns to its previous level.



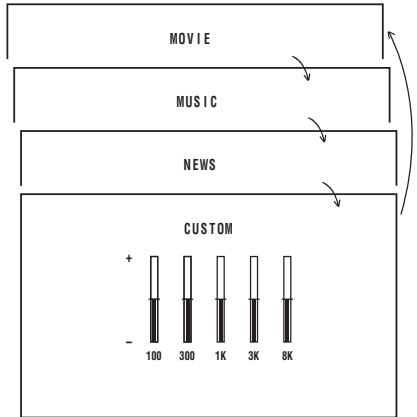
NOTE • Mute will be cancelled if the  is pressed at any time.

Sound mode



Each time you press the **SOUND MODE**, the mode switches between **MOVIE**, **MUSIC**, **NEWS** and **CUSTOM**.

- MOVIE**: Movie mode
- MUSIC**: Music mode
- NEWS**: News mode
- CUSTOM**: Custom mode



Channel recall

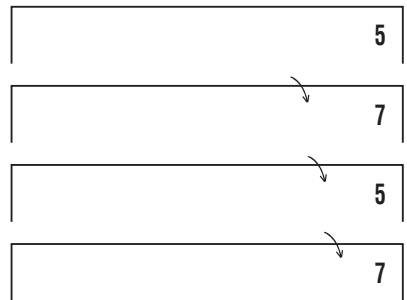
Switches back to the channel you were watching just before the current channel.

Press **S**.

- The channel previously viewed returns to the screen.

Example:

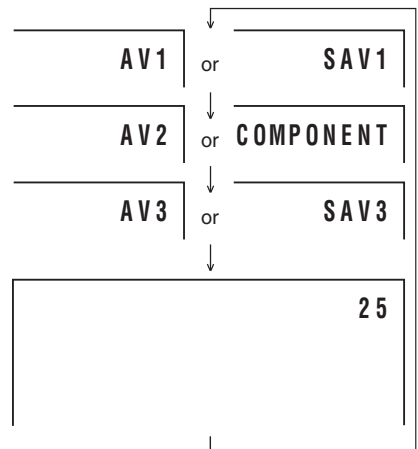
After switching from channel 5 to channel 7, **S** is pressed, the channel will change to channel 5. Press **S** again to return to channel 7.



TV/Video selection

Switches between TV broadcasts and AV input programmes.

Each time you press the **TV/VIDEO**, the input switches between **AV1** (or **SAV1**), **AV2** (or **COMPONENT**), **AV3** (or **SAV3**) and TV programme.



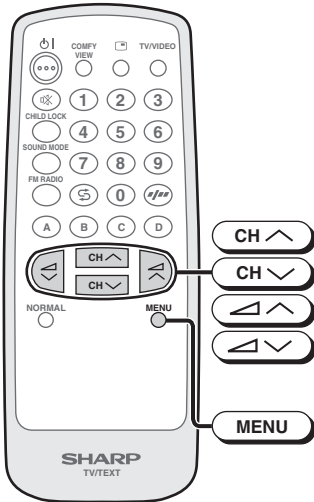
NOTE • The SOUND MODE display can be adjusted using the EQUALIZER menu. See 24.



Selecting menu items

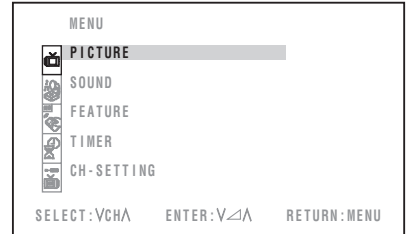
This TV set allows you to adjust the picture and sound, and set the channels and other features using the On-screen display with the remote control or from the TV set. Select the desired menu item by following the steps below and then refer to the indicated page for details.

Remote control



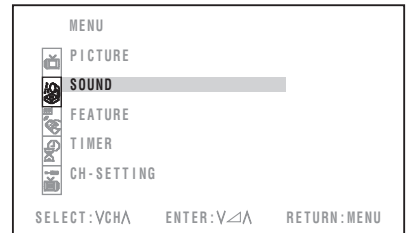
Selecting a menu item

1 Press **MENU** / **MENU/PRESET** to call MENU screen.



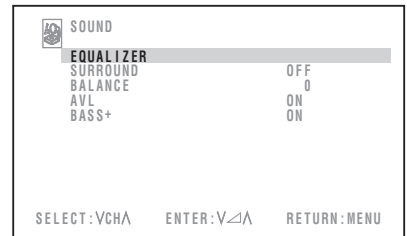
2 Press **CH UP** / **CH DOWN** to select desired menu item.

- The selected item is highlighted with purple bar.



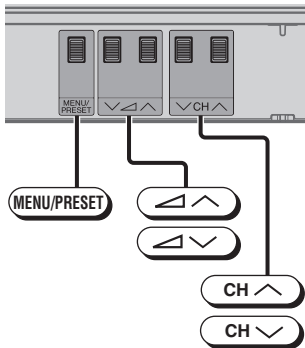
3 Press **ENTER** / **ENTER** to enter.

- The corresponding menu screen will appear.



4 Press **MENU** / **MENU/PRESET** until normal screen appears.

Behind the door

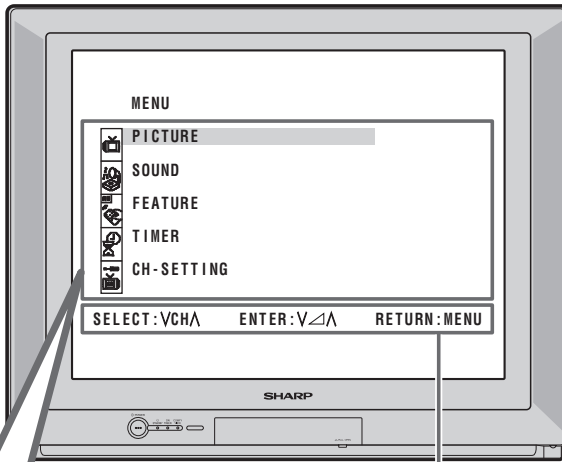


NOTE

- If you press **MENU/PRESET** on TV set for more than two seconds, the LANGUAGE mode screen will appear instead of the MENU screen. To display the MENU screen, press **MENU/PRESET** until the normal screen appears, then press the button again. See [14](#).
- The procedures for setting and selecting the menu items on the following pages are described using the buttons on the remote control. These procedures can also be performed using the corresponding buttons on the TV set.

Selecting menu items

Menu item



Operation guide

PICTURE menu..... 21 - 22

	PICTURE	
	VIDEO MODE	DYNAMIC
	CONTRAST	60
	COLOUR	+ 6
	BRIGHTNESS	0
	TINT	0
	SHARPNESS	+ 6
	PICTURE NR	OFF
	WHITE TEMP	◆ <input type="text"/> ◇
SELECT: VCH ADJUST: V/Δ RETURN: MENU		

SOUND menu..... 23 - 24

	SOUND	
	EQUALIZER	
	SURROUND	OFF
	BALANCE	0
	AVL	ON
	BASS+	ON
SELECT: VCH ENTER: V/Δ RETURN: MENU		

FEATURE menu..... 25 - 32

	FEATURE	
	BLUE BACK	OFF
	AUTO SELECT	OFF
	COMFY VIEW	OFF
	16:9 MODE	OFF
	CHILD LOCK	
	DEMO	OFF
SELECT: VCH ADJUST: V/Δ RETURN: MENU		

TIMER menu..... 33 - 42

	TIMER	
	CLOCK	---:-- AM
	DAY	SUN
	ON <input type="checkbox"/>	---:-- AM
	STATUS	ONCE
	POSITION	--
	VOLUME	--
	OFF <input type="checkbox"/>	---:-- AM
	<input type="checkbox"/>	---:--
	VIEW <input type="checkbox"/>	
	BEEP REMINDER	OFF
SELECT: VCH ADJUST: 0-9, V/Δ RETURN: MENU		

CH-SETTING menu..... 17 - 20

	CH-SETTING	
	POSITION	12
	POSITION NAME	
	COLOUR-SYSTEM	AUTO
	SOUND-SYSTEM	AUTO
	SKIP	OFF
	AUTO	
	MANUAL	168.25MHz
	SORT	
	LANGUAGE	ENGLISH
SELECT: VCH ADJUST: V/Δ RETURN: MENU		

NOTE

- The on-screen displays in this manual may differ from their actual appearance.

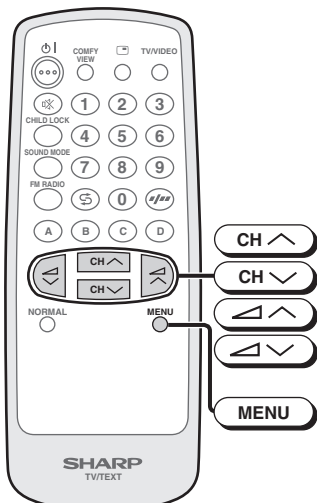


Settings and adjustments

On-screen display language selection

The on-screen display language can be set to English, Chinese, French, Malay or Arabic.

Behind the door



TV set

1 Press **MENU/PRESET** for more than two seconds during normal screen.

- The language select mode appears.

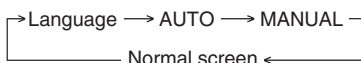
NOTE

- In order to enter to language select mode, press **MENU/PRESET** during normal screen.



2 Press **CH ^** / **CH v** to select desired language.

- Pressing **MENU/PRESET** changes the screen as shown below.

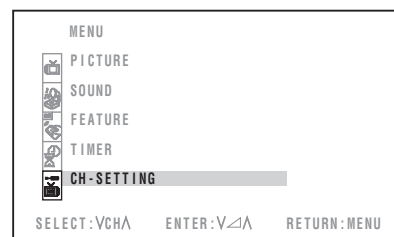


3 Press **MENU/PRESET** until normal screen appears.

Using MENU screen

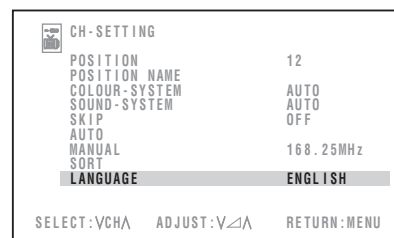
1 Press **MENU** to call MENU screen.

2 Press **CH ^** / **CH v** to select "CH-SETTING".



3 Press **CH ^** / **CH v** to display CH-SETTING menu.

4 Press **CH ^** / **CH v** to select "LANGUAGE".



5 Press **CH ^** / **CH v** to select the desired language.

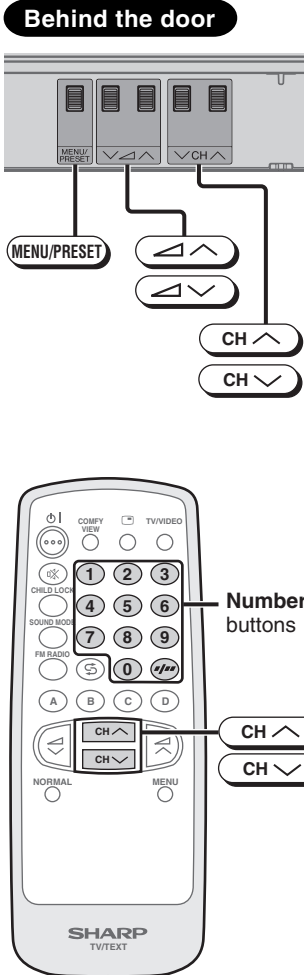


6 Press **MENU** until normal screen appears.

Manual channel tuning

Enables manual channel tuning to a desired TV station. (e.g. tuning the TV to a VCR, tuning in an additional TV station.)

NOTE: This TV is already tuned into 2, 7, 9, 10 and 28.



1 Press **MENU/PRESET** for more than two seconds during normal screen.

- The language select mode appears.

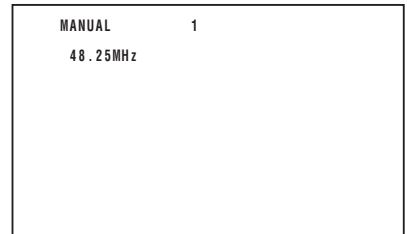
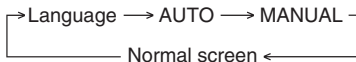
NOTE

- In order to enter to language select mode, press **MENU/PRESET** during normal screen.



2 Press **MENU/PRESET** twice to display MANUAL mode screen.

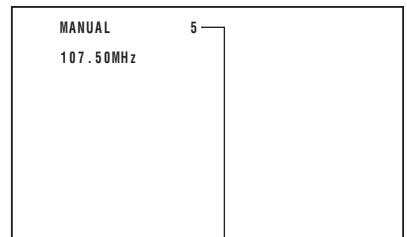
- Pressing **MENU/PRESET** changes the screen as shown below.



3 Press **CH up** / **CH down** or number buttons to select channel position.

4 Press **left arrow** / **right arrow** on TV set to locate channel you wish to preset to current channel position.

- Search is initiated and when a TV signal is received during the search, the search stops.



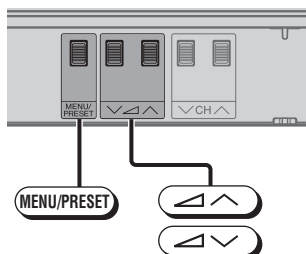
5 Repeat steps 3 and 4 above, to preset channel positions for other broadcasts.

6 Press **MENU/PRESET** again to display normal screen.

Auto channel tuning

Automatically tunes in and presets receivable TV stations, using consecutive channels numbers (e.g. 2, 7, 9, 10 will be stored as 1, 2, 3, 4).

Behind the door

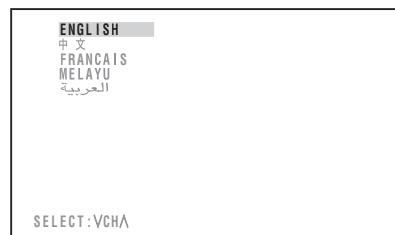


1 Press **MENU/PRESET** for more than two seconds during normal screen.

- The language select mode appears.

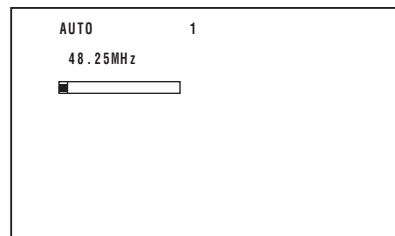
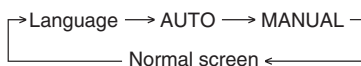
NOTE

- In order to enter to language select mode, press **MENU/PRESET** during normal screen.



2 Press **MENU/PRESET** again to display AUTO mode screen.

- Pressing **MENU/PRESET** changes the screen as shown below.



3 Press **CH+ / CH-** on TV set.

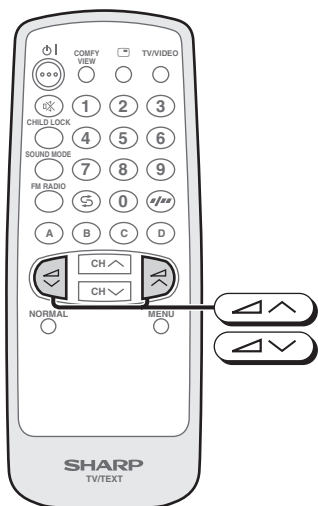
- All the TV stations in your area that can be received by the TV set are automatically preset between channels 1 to 99.
- The screen shows whatever is on channel 1 when auto channel preset is finished.



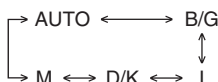
NOTE

- AUTO PRESET stores all receivable channels including those which may be very weak and not clearly visible. To preset only those channels designated for the local viewing region, use MANUAL PRESET. See **15**.
- Unused channels are automatically skipped.

Channel setting (continued)



SOUND-SYSTEM



SKIP

ON ↔ OFF

When set "SKIP" to "ON", the channel number are set to SKIP. To turn off SKIP, press the number buttons to select the desired channel and then set "SKIP" to "OFF".

AUTO

- Press / and Auto Channel Tuning is started. Auto tuning bar will shown during Auto Search only. (Please see page 16 for details on Auto Channel Tuning.)

CH-SETTING	
POSITION	12
POSITION NAME	CINEMAX
COLOUR-SYSTEM	AUTO
SOUND-SYSTEM	AUTO
SKIP	OFF
AUTO	
MANUAL	168.25MHz
SORT	
LANGUAGE	ENGLISH
SELECT:VCHA ADJUST:VΔA RETURN:MENU	

MANUAL (FINE tuning)

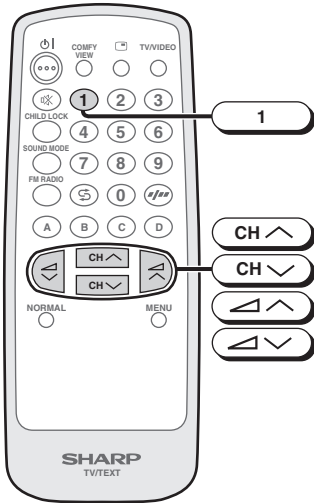
- Each time / is pressed, the frequency changes to allow fine tuning and the colour of channel number changes to yellow to indicate fine tuning.
- Press / for more than 2 seconds, the "Manual Channel Tuning" will start. If a signal is found, the Manual Channel Tuning will stop searching.

(continue)

NOTE

- Switching SOUND-SYSTEM:
Set the system to "AUTO" for normal TV reception. The AUTO mode automatically detects the receiving signal system and changes the reception system of the TV set. When the sound is not stable, switching to an appropriate system may improve the sound quality.
- In a weak reception area, or under bad reception conditions, you can change the frequency for fine tuning.
- When using FINE tuning, the channel number changes from green to yellow.
- To return the channel to its original frequency setting, follow the manual channel tuning procedure. See 15.

Channel setting (continued)



SORT

- To sort the program numbers according to your preference.

Moving a program TV2 (at program number 2) to program number 5

- When you press **CH ^** / **CH v** in **step 5** on page 17, SORT menu will be displayed.

SORT		
1	STARWLD	10
2	TV2	11
3	HALLMRK	12
4	HBO	13
5	DISCOVR	14
6	LEARN	15
7		16
8		17
9		18
		19
		20
		21
		22
		23
		24
		25
		26
		27

SELECT: VCHA MOVE: 1 DELETE: 2

- Press **CH ^** / **CH v** or **CH ^** / **CH v** to select program number 2 (e.g. TV2) to be moved.

SORT		
1	STARWLD	10
2	TV2	11
3	HALLMRK	12
4	HBO	13
5	DISCOVR	14
6	LEARN	15
7		16
8		17
9		18
		19
		20
		21
		22
		23
		24
		25
		26
		27

SELECT: VCHA MOVE: 1 DELETE: 2

- Press **1**, and program number 2 (e.g. TV2) will be set as program to be moved.

SORT		
1	STARWLD	10
2	TV2	11
3	HALLMRK	12
4	HBO	13
5	DISCOVR	14
6	LEARN	15
7		16
8		17
9		18
		19
		20
		21
		22
		23
		24
		25
		26
		27

SELECT: VCHA MOVE: 1 2 TO...

- Press **CH ^** / **CH v** or **CH ^** / **CH v** to select program number 5 (e.g. DISCOVER).

SORT		
1	STARWLD	10
2	TV2	11
3	HALLMRK	12
4	HBO	13
5	DISCOVR	14
6	LEARN	15
7		16
8		17
9		18
		19
		20
		21
		22
		23
		24
		25
		26
		27

SELECT: VCHA MOVE: 1 2 TO...

- Press **1** again, TV2 will be moved to program number 5. The programs in program number 3 to 5 will be shifted up 1 position.

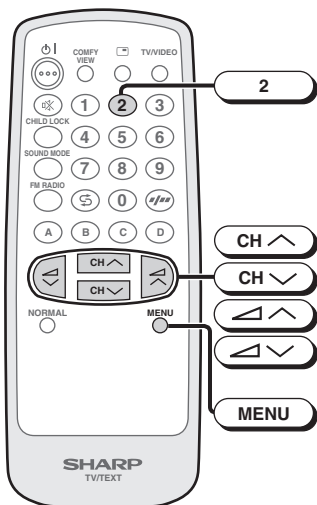
SORT		
1	STARWLD	10
2	HALLMRK	11
3	HBO	12
4	DISCOVR	13
5	TV2	14
6	LEARN	15
7		16
8		17
9		18
		19
		20
		21
		22
		23
		24
		25
		26
		27

SELECT: VCHA MOVE: 1 DELETE: 2

- TV will tune to program number 5 having TV2 program.

(continue)

Channel setting (continued)



Deleting a program (Delete TV2 at program number 2)

1. Repeat **step 1** on page **19**.

2. Press **CH ^** / **CH v** or **↶** / **↷** to select program number 2 (e.g. TV2) to be deleted.

SORT		
1	STARWLD	10
2	TV2	11
3	HALLMRK	12
4	HBO	13
5	DISCOVR	14
6	LEARN	15
7		16
8		17
9		18
		19
		20
		21
		22
		23
		24
		25
		26
		27

SELECT:VCHA MOVE:1 DELETE:2

3. Press **2** and program number 2 (e.g. TV2) will be set as program to be deleted.

SORT		
1	STARWLD	10
2	TV2	11
3	HALLMRK	12
4	HBO	13
5	DISCOVR	14
6	LEARN	15
7		16
8		17
9		18
		19
		20
		21
		22
		23
		24
		25
		26
		27

DELETE:2 2

4. Press **2** again, program number 2 (e.g. TV2) will be deleted. The programs in program number 3 to 99 will be shifted up 1 position.

- TV will tune to program number 2 having HALLMRK program.

SORT		
1	STARWLD	10
2	HALLMRK	11
3	HBO	12
4	DISCOVR	13
5	LEARN	14
6		15
7		16
8		17
9		18
		19
		20
		21
		22
		23
		24
		25
		26
		27

SELECT:VCHA MOVE:1 DELETE:2

6 Press **MENU** until normal screen appears.

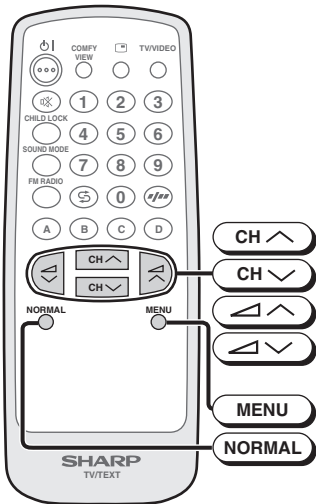
- When you select AV1, AV2 or AV3 for the channel position, the CH-SETTING menu changes as shown on the right and the colour mode changes in the following order:

CH-SETTING	
POSITION	AV1
COLOUR-SYSTEM	AUTO
LANGUAGE	ENGLISH

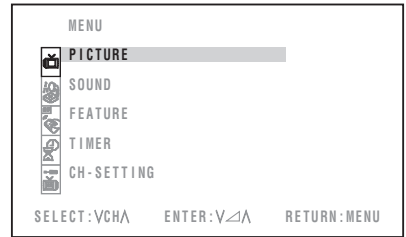
SELECT:VCHA ADJUST:VΔ RETURN:MENU

→ AUTO ↔ PAL ↔ SECAM ↔ N443 ↔ N358 ←

Picture adjustment

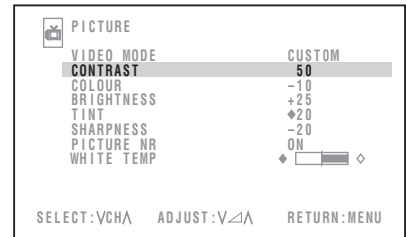


1 Press **MENU** to call MENU screen.



2 Press **CH UP** / **CH DOWN** to select "PICTURE".

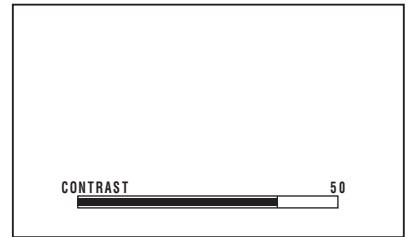
3 Press **CH UP** / **CH DOWN** to display PICTURE menu.



4 Press **CH UP** / **CH DOWN** to select adjustment items.

5 Adjust using **CH UP** / **CH DOWN**.

- Wait for approximately five seconds to return to PICTURE menu.





6 Repeat steps 4 and 5 above to adjust other items.











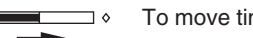




7 Press **MENU** until normal screen appears.

- Pressing **NORMAL** while a PICTURE selection is displayed, only the selected mode is reset to the standard (factory-setting) position.
- Pressing **NORMAL** while a PICTURE menu screen is displayed will reset all the items of PICTURE menu to the standard (factory-setting) position
- Pressing **NORMAL** will reset all the items of PICTURE menu and SOUND menu to the standard (factory-setting) position.

(continue)

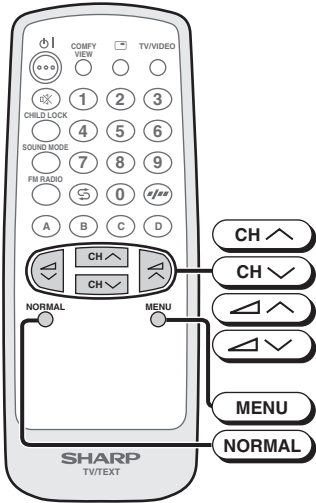
Picture adjustment (continued)

The following table lists the adjustment items shown in the PICTURE menu and how they change as you press  / .

Selected item	Press 	Press 
VIDEO MODE	 → DYNAMIC ↔ STANDARD ↔ SOFT ↔ CUSTOM ←	
CONTRAST	To decrease contrast 	To increase contrast 
COLOUR	For less colour intensity - 	For more colour intensity + 
BRIGHTNESS	For less brightness - 	For more brightness + 
TINT	To move tint toward red ♦ 	To move tint toward green ♦ 
SHARPNESS	For less sharpness - 	For more sharpness + 
PICTURE NR	ON ↔ OFF (see note below)	
WHITE TEMP	To more reddish background ♦ 	To more bluish background ♦ 

- TINT can only be selected and adjusted when receiving NTSC broadcasts.
- Picture Noise Reduction
Noise might be generated on images when playing deteriorated video tapes or when receiving broadcasts with relatively weak signals. In these cases, set PICTURE NR to "ON" to reduce the noise. However, when receiving good images without noise, you can get better image quality by turning OFF this feature.
- WHITE TEMP can only be adjusted on PICTURE menu.
- If any items is adjusted, VIDEO MODE will automatically change to CUSTOM.

Sound adjustment



1 Press **MENU** to call MENU screen.

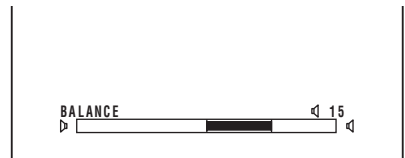
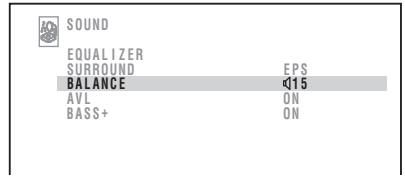
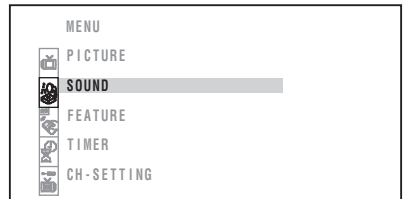
2 Press **CH ^** / **CH v** to select "SOUND".

3 Press **▲** / **▼** to display SOUND menu.

4 Press **CH ^** / **CH v** to select adjustment items.

5 Adjust using **▲** / **▼**.

- Wait for approximately five seconds to return to SOUND menu.



6 Repeat steps 4 and 5 above to adjust other items.

7 Press **MENU** until normal screen appears.

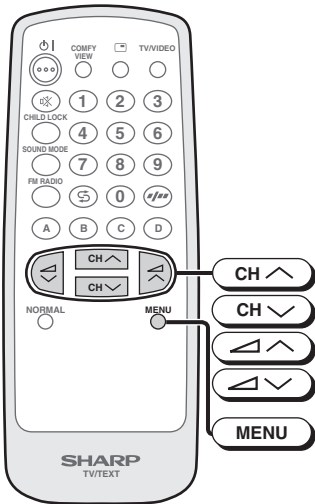
- Pressing **NORMAL** while a SOUND selection is displayed, only the selected mode is reset to the standard (factory-setting) position.
- Pressing **NORMAL** while the SOUND menu screen is displayed will reset all the items of SOUND menu to the standard (factory-setting) position.
- Pressing **NORMAL** will reset all the items of PICTURE menu and SOUND menu to the standard (factory-setting) position.

The following table lists the adjustment items shown in the SOUND menu and how they change as you press **▲** / **▼**.

Selected item	Press ▼	Press ▲
EQUALIZER	(Refer with page 24 for details on Equalizer)	
SURROUND*1	(Please see note below)	
BALANCE	To shift balance toward left	To shift balance toward right
AVL *2	The AVL is ON	The AVL is OFF
BASS+	The BASS+ is ON	The BASS+ is OFF

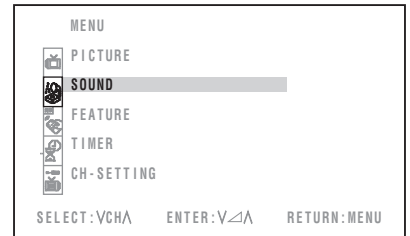
- AVL is advised to be set to "ON" when compact disk (CD) is being playback.
- *1: SURROUND mode can be set to "OFF" or "ESS" during receiving sound signal is stereo.
SURROUND mode can be set to "OFF" or "EPS" during receiving sound signal is monaural.
- *2: Please see 51 for details on Definition of Terms.

Equalizer



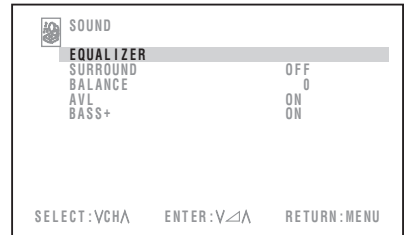
1 Press **MENU** to call MENU screen.

2 Press **CH ^** / **CH v** to select "SOUND".



3 Press **Δ ^** / **Δ v** to display SOUND menu.

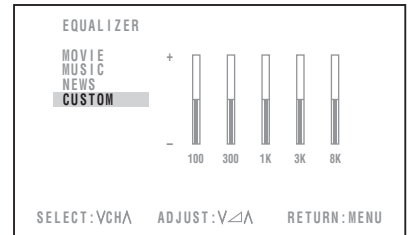
4 Press **CH ^** / **CH v** to select "EQUALIZER".



5 Press **Δ ^** / **Δ v** to display EQUALIZER menu.

6 Press **CH ^** / **CH v** to select "MOVIE", "MUSIC", "NEWS" or "CUSTOM".

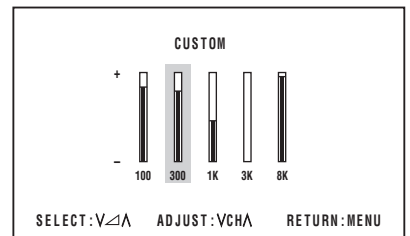
- When "MOVIE", "MUSIC" or "NEWS" is adjusted, EQUALIZER will automatic change to "CUSTOM" mode.



7 Press **Δ ^** / **Δ v** to display CUSTOM screen.

8 Press **Δ ^** / **Δ v** to select EQUALIZER bar.

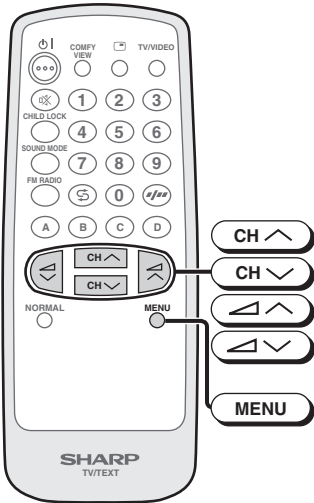
9 Press **CH ^** / **CH v** to adjust higher or lower.



10 Press **MENU** until normal screen appears.

Blue screen

Automatically turns the screen blue if a broadcast signal is not received.



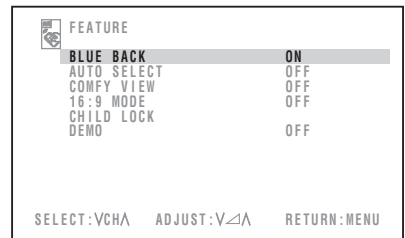
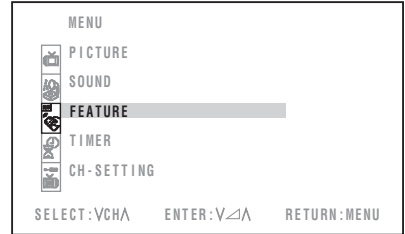
1 Press **MENU** to call MENU screen.

2 Press **CH UP** / **CH DOWN** to select "FEATURE".

3 Press **CH UP** / **CH DOWN** to display FEATURE menu.

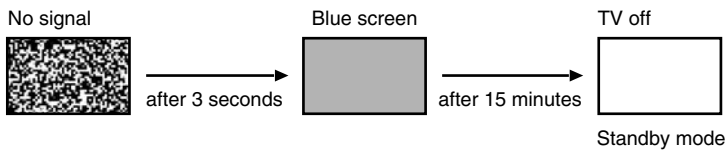
4 Press **CH UP** / **CH DOWN** to select "BLUE BACK".

5 Press **CH UP** / **CH DOWN** to select "ON" or "OFF".



6 Press **MENU** until normal screen appears.

When BLUE BACK is set to "ON"



(Indicator)

⏻
STANDBY



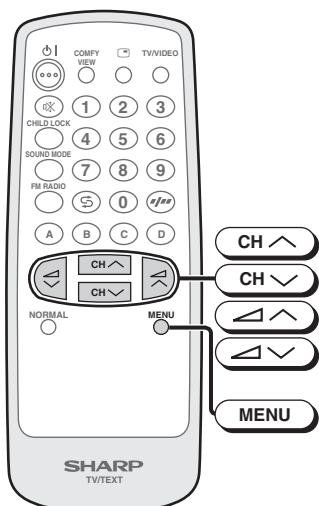
☀ Standby indicator lights up red

NOTE

- Poor reception due to weak signals and too much noise may activate BLUE BACK, despite the presence of a broadcast signal. To continue watching TV under these conditions, switch "BLUE BACK" to "OFF".
- When Off timer is set, the OFF TIMER setting has priority over BLUE BACK.

Auto select

When video equipment, such as a video game system or camcorder, is connected to the front (AV-3 IN) terminals, this TV set automatically selects the input mode (AV3).



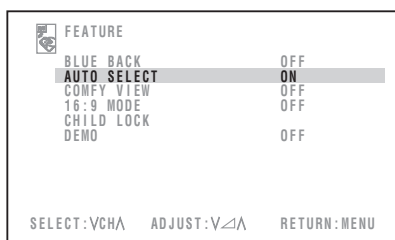
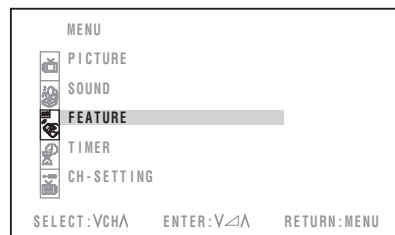
1 Press **MENU** to call MENU screen.

2 Press **CH ^** / **CH v** to select "FEATURE".

3 Press **▲** / **▼** to display FEATURE menu.

4 Press **CH ^** / **CH v** to select "AUTO SELECT".

5 Press **▲** / **▼** to select "ON" or "OFF".



6 Press **MENU** until normal screen appears.

To use the Auto Select function, confirm the following:

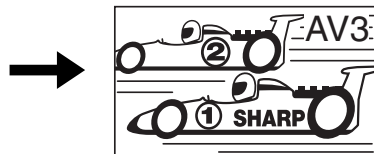
- The TV set is turned on. (The ⏻ Standby indicator lights up green.)
- The video equipment, such as a video game system or camcorder, is connected to the front (AV-3 IN) terminals.

Example

Connect the video equipment to the front (AV-3 IN) terminals.



Input mode (AV3) is automatically selected.

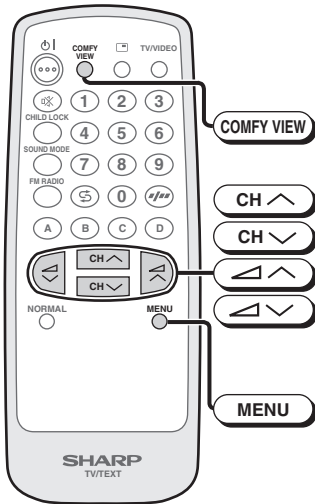


NOTE

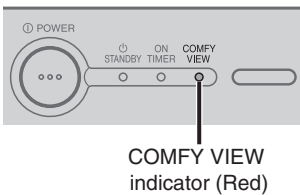
- If the video equipment is connected to the rear terminals on the TV set, the video mode will not be automatically selected.
- When the power on the video equipment is turned off, the input mode (AV3) is still selected. Use the remote control to return to a TV channel.

Comfy view

The TV set will automatically adjust the contrast according to the environment brightness. User may select own preference by select COMFY VIEW to "OFF", "DARK", "MID" or "LIGHT".

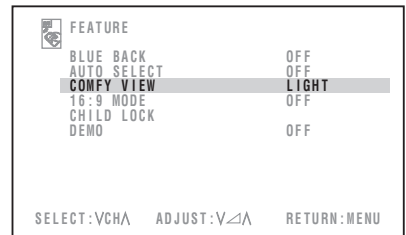
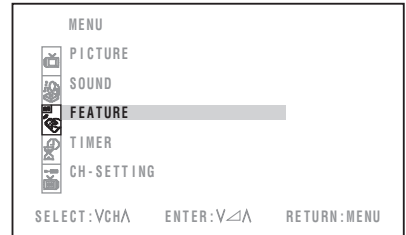


TV Set



Using MENU screen

- 1** Press **MENU** to call MENU screen.
- 2** Press **CH ^** / **CH v** to select "FEATURE".
- 3** Press **CH ^** / **CH v** to display FEATURE menu.
- 4** Press **CH ^** / **CH v** to select "COMFY VIEW".
- 5** Press **CH ^** / **CH v** to select "OFF", "DARK", "MID" or "LIGHT".

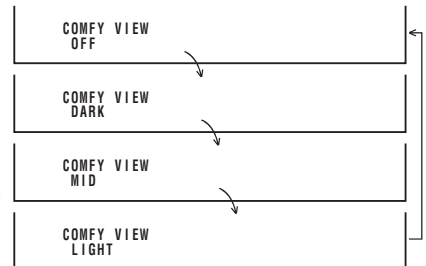


- When COMFY VIEW is set to "OFF", the COMFY VIEW indicator on the TV set is turn off.
- When COMFY VIEW is set to "DARK", "MID" or "LIGHT", the COMFY VIEW indicator on the TV set lights up in red.

- 6** Press **MENU** until normal screen appears.

Using Remote Control

- 1** Press **COMFY VIEW** directly enter to the COMFY VIEW mode screen.
- 2** Each time you press **COMFY VIEW**, the mode switches between "OFF", "DARK", "MID" or "LIGHT".

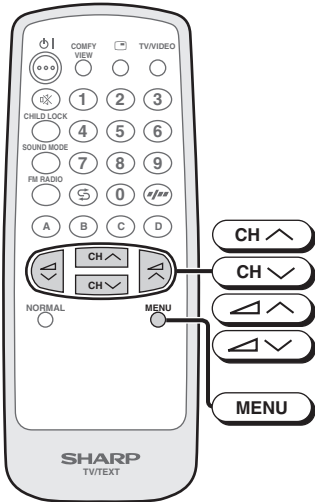


- When COMFY VIEW is set to "OFF", the COMFY VIEW indicator on the TV set is turn off.
- When COMFY VIEW is set to "DARK", "MID" or "LIGHT", the COMFY VIEW indicator on the TV set lights up in red.

- 3** The COMFY VIEW mode screen disappear approximately five seconds.

16:9 mode

Selects the width of the picture.



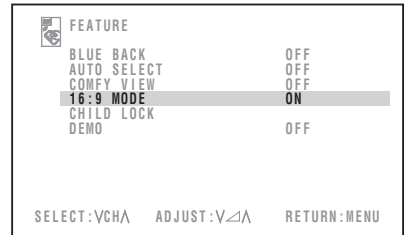
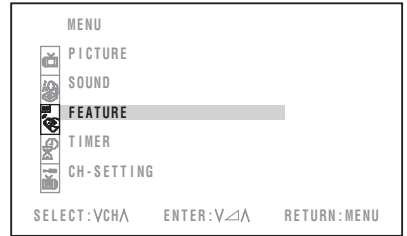
1 Press **MENU** to call MENU screen.

2 Press **CH ^** / **CH v** to select "FEATURE".

3 Press **▲** / **▼** to display FEATURE menu.

4 Press **CH ^** / **CH v** to select "16:9 MODE".

5 Press **▲** / **▼** to select "ON" or "OFF".



Format of signal input

16:9 format signal

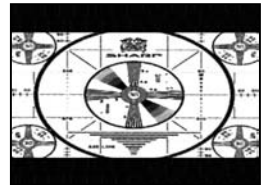
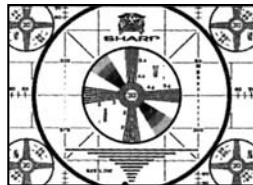
Mode set to "OFF"



Mode set to "ON"



4:3 format signal

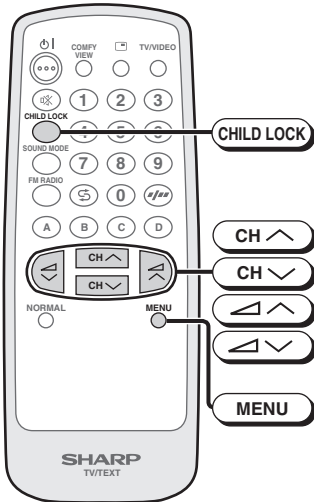


6 Press **MENU** until normal screen appears.

Child lock

Preventing children from watching TV or certain channels.

Setting the CHILD LOCK mode (For the first time)



- 1 Press **MENU** to call MENU screen.

NOTE

- Press **CHILD LOCK** will enter directly to CHILD LOCK menu.

- 2 Press **CH UP** / **CH DOWN** to select "FEATURE".

- 3 Press **UP** / **DOWN** to display FEATURE menu.

- 4 Press **CH UP** / **CH DOWN** to select "CHILD LOCK".

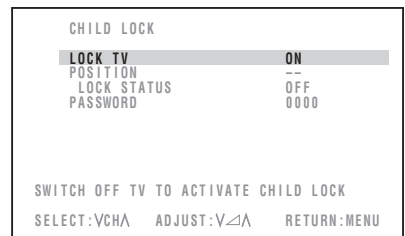
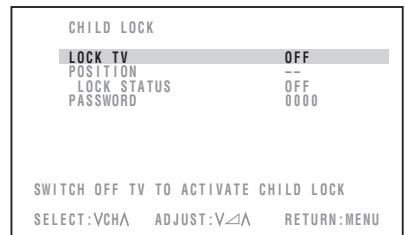
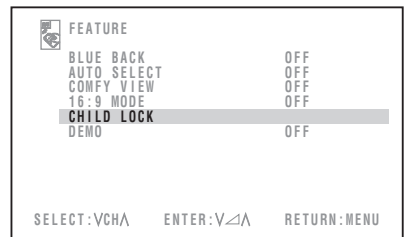
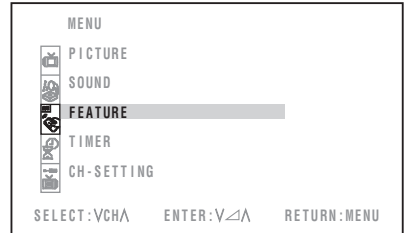
- 5 Press **UP** / **DOWN** to display CHILD LOCK menu.

- 6 Press **CH UP** / **CH DOWN** to select desired individual setting as follow:

LOCK TV

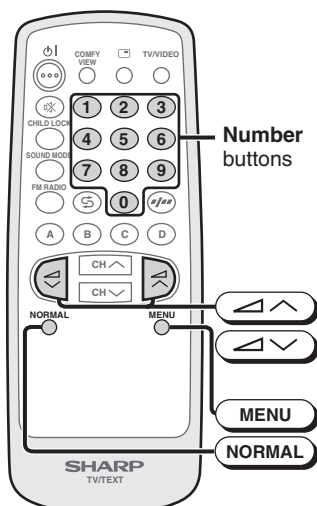
Press **UP** / **DOWN** to select "LOCK TV" to "ON" or "OFF".

- ON
LOCK TV will lock the entire TV for viewing.
(Please see page 31 for details on "To turn OFF or to change setting of CHILD LOCK mode".)
- OFF
LOCK TV is deactivated.



(continue)

Child lock (continued)



POSITION/LOCK STATUS

(i) Press / or **Number** buttons (0~9) to set the position.
(e.g. 25)

(ii) Press / to select "LOCK STATUS" to "ON" or "OFF".

CHILD LOCK	
LOCK TV	OFF
POSITION	25
LOCK STATUS	ON
PASSWORD	0000
SWITCH OFF TV TO ACTIVATE CHILD LOCK	
SELECT:VCHA	ADJUST:V^v
RETURN:MENU	

- ON: Channel position set above (e.g. 25) will be locked. You may not be able to view the channel position set above. (Please see page 31 for details on "To turn OFF or to change setting of CHILD LOCK mode".)
- OFF: Channel position set above (e.g. 25) will not be locked.

PASSWORD

Enter 4 digits PASSWORD using **Number** buttons (0~9) on the remote control.
(For example: 0000).

- Press **NORMAL** to reset the entered number to "0000".

CHILD LOCK	
LOCK TV	OFF
POSITION	--
LOCK STATUS	OFF
PASSWORD	0000
SWITCH OFF TV TO ACTIVATE CHILD LOCK	
SELECT:VCHA	ADJUST:0-9
RETURN:MENU	

7 Press **MENU** until normal screen appears.

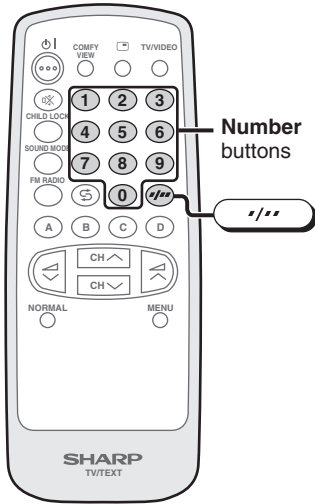
- The CHILD LOCK mode will be activated after the TV is turned off and on again.

(continue)

NOTE

- If you forget your PASSWORD, please input "2398" to enter, then change to new PASSWORD. To change to new PASSWORD, please see **PASSWORD** above.

Child lock (continued)

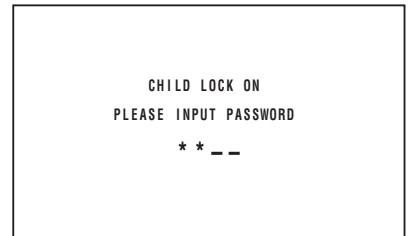


To turn OFF or to change setting of CHILD LOCK mode

1 While “CHILD LOCK ON” screen appear.

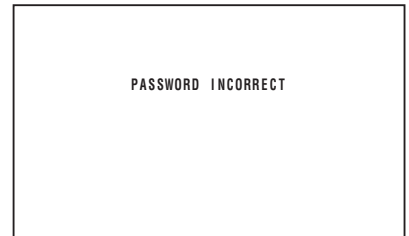


2 Enter 4 digits **PASSWORD** using Number buttons (0~9) on the remote control. (For example: 0000)



- Press ******* to clear the entered number.

- If the wrong **PASSWORD** is entered, “**PASSWORD INCORRECT**” screen will appear. Input the **PASSWORD** again in this case.

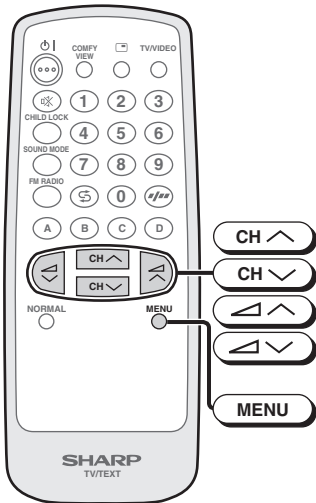


NOTE

- If you forget your password, please input “2398” to to enter, then change to new **PASSWORD**. To change to new **PASSWORD**, please see **PASSWORD** on **30**.
- The **PASSWORD** is shared for **CHILD LOCK** and **VIEW TIMER**.

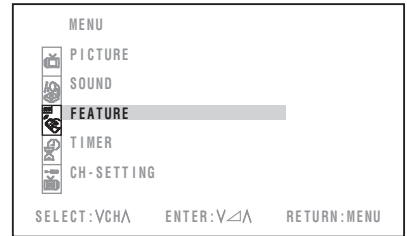
Demo

To learn more about TV set.



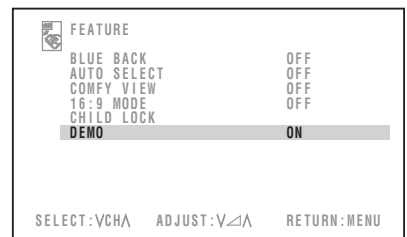
1 Press **MENU** to call MENU screen.

2 Press **CH ^** / **CH v** to select "FEATURE".



3 Press **Δ ^** / **Δ v** to display FEATURE menu.

4 Press **CH ^** / **CH v** to select "DEMO".



5 Press **Δ ^** / **Δ v** to select "ON" or "OFF".

"ON": Turn ON demonstration.

"OFF": Turn OFF demonstration.

During demonstration is showing:

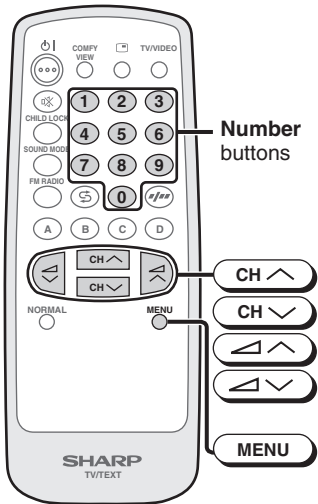
- ① Press any button on remote control once will pause the demonstration for approximately 1 minute.
- ② Press any button again will exit the demo mode temporary and return back to TV mode.
- ③ If no button is pressed within 1 minute the demonstration will be automatically restarted.
- ④ Set DEMO to "OFF" for turning OFF the demonstration.

6 Press **MENU** until normal screen appears.

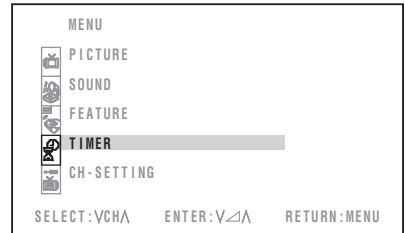
NOTE • You are advised to change the setting in MENU after the DEMO is turn "OFF".

Clock

This is a real time clock and must be set before On Timer and Off Timer can be used. If clock is not set, On Timer and Off Timer cannot be set.

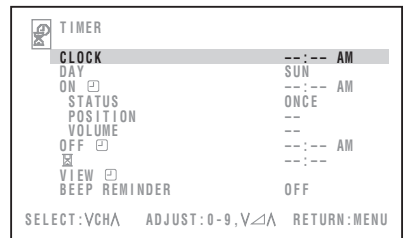


1 Press **MENU** to call MENU screen.



2 Press **CH ^** / **CH v** to select "TIMER".

3 Press **▲** / **▼** to display TIMER menu.

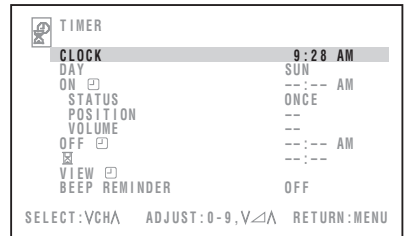


4 Press **CH ^** / **CH v** to select "CLOCK".

5 Press Number buttons (0~9) to set clock.

Press **▲** / **▼** to select "AM" or "PM".

- As soon as the clock is entered, the clock starts running.



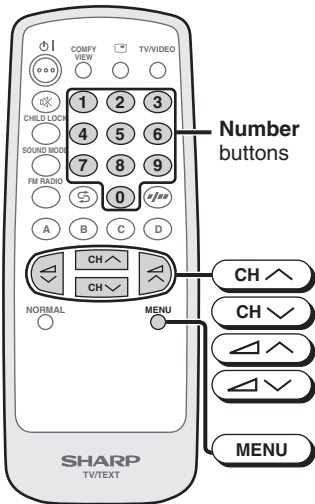
6 Press **MENU** until normal screen appears.

NOTE

- CLOCK can be set from 12:00 AM until 12:00 PM.
 For example: 11:59 AM → 12:00 PM → ... 12:59 PM → 1:00 PM → ... 11:59 PM → 12:00 AM ...
- This real time clock is not synchronized with the time from Teletext.
- If **0** is pressed for the 1st digit, the "0" will not appear after entering the 4th digit.
 Example: "09:28 AM" → "9:28 AM"
- To cancel the clock setting, press **NORMAL** when "CLOCK" is highlighted so as to set the clock to "--:--".

Day

This function allow to set the day.



1 Press **MENU** to call MENU screen.

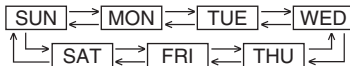
2 Press **CH ^** / **CH v** to select "TIMER".

3 Press **▲** / **▼** to display TIMER menu.

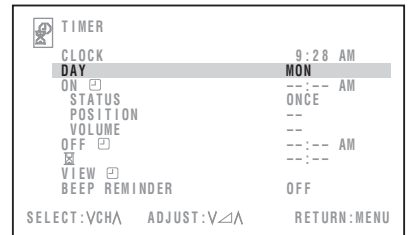
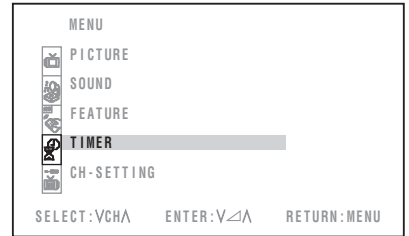
4 Press **CH ^** / **CH v** to select "DAY".

5 Press **▲** / **▼** to set DAY.

- DAY is useful for On Timer only.
- When real time clock changes from 11:59 PM to 12:00 AM, DAY will be updated automatically.
- If the On Timer "STATUS" matches the DAY, the TV will turns power on when the On Timer has been reached.
- DAY does not function if the real time clock has not been set.
- DAY can be select in the following order:



6 Press **MENU** until normal screen appears.



On timer

Automatically turns power on when preset time on a specific day has been reached.

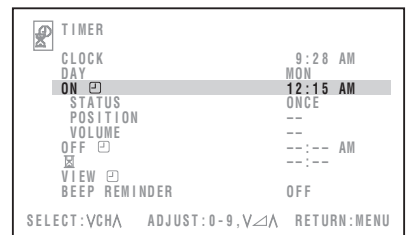
1 Repeat steps 1 ~ 2 above.

2 Press **▲** / **▼** to display TIMER menu.

3 Press **CH ^** / **CH v** to select "ON".

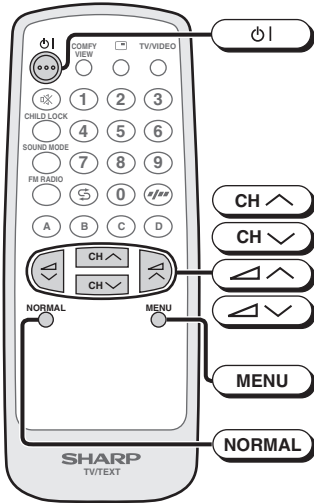
4 Press Number buttons (0-9) to set time for TV to turn on.

Press **▲** / **▼** to select "AM" or "PM".

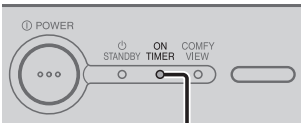


(continue)

On timer (continued)



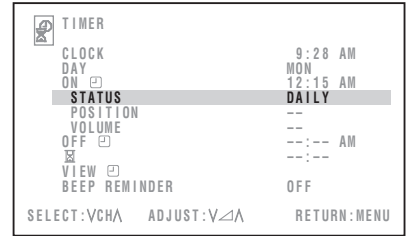
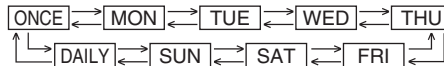
TV Set



ON TIMER indicator (Red)

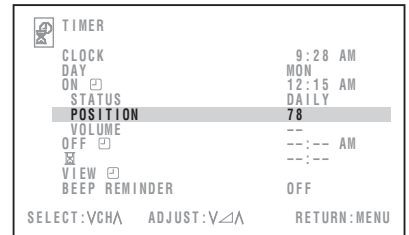
5 Press **CH ^** / **CH v** to select "STATUS".

6 Press **Left Arrow** / **Right Arrow** to set the status.
 • STATUS can be select in the following order:



7 Press **CH ^** / **CH v** to select "POSITION".

8 Press **Left Arrow** / **Right Arrow** to set the position.
 (e.g. 78)

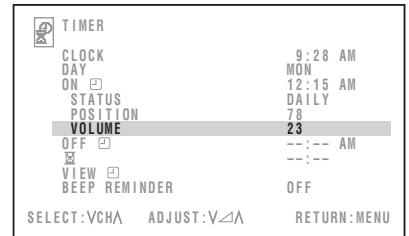


9 Press **CH ^** / **CH v** to select "VOLUME".

10 Press **Left Arrow** / **Right Arrow** to set volume.

11 Press **MENU** until normal screen appears.

12 Press **Power** to put TV set into Standby mode.



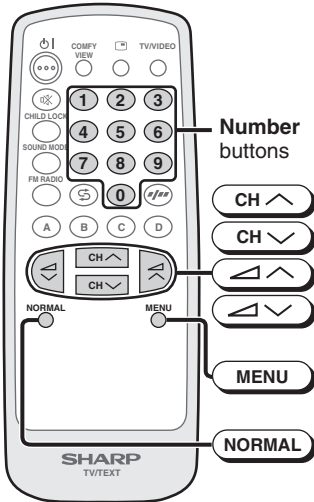
- The ON TIMER indicator lights up Red.
- When On Timer has been reached on the desired day, the power turns on and a picture appears on the screen.
- The On Timer speaker volume gradually increases from zero to the preset volume.

NOTE

- On Timer can be set from 12:00 AM until 12:00 PM.
 For example: 11:59 AM → 12:00 PM → ...12:59 PM → 1:00 PM → ...11:59 PM → 12:00 AM ...
- If CLOCK is not set, On Timer cannot be functioned.
- If **0** is pressed for the 1st digit, the "0" will not appear after entering the 4th digit.
 Example: "09:28 AM → "9:28 AM"
- To cancel the timer setting, press **NORMAL** when "ON []" is highlighted so as to set the timer to "--:--".
- The On timer is cancelled if the power is turned off using **Power** on the TV set.
- If the TV set is turned on by the On timer, then the TV set will be automatically turned off in two hours if no buttons are pressed on the TV set or remote control.

Off timer

Automatically switches the TV to standby mode when preset time has been reached.



1 Press **MENU** to call MENU screen.

2 Press **CH \uparrow** / **CH \downarrow** to select "TIMER".

3 Press **\triangle \uparrow** / **\triangle \downarrow** to display TIMER menu.

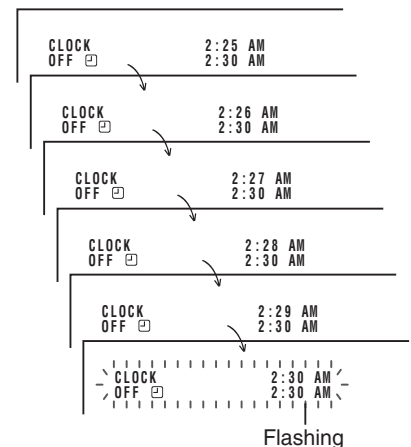
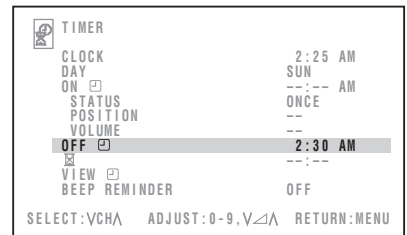
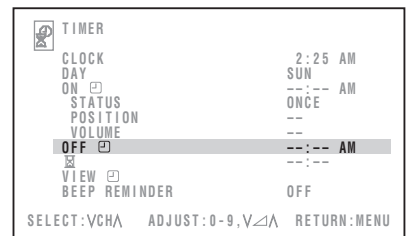
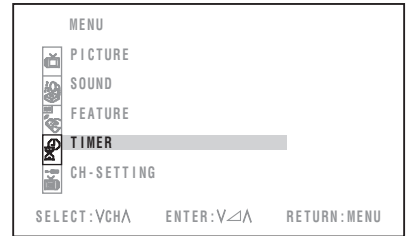
4 Press **CH \uparrow** / **CH \downarrow** to select "OFF \square ".

5 Press Number buttons (0-9) to set time for TV to turn off.

Press **\triangle \uparrow** / **\triangle \downarrow** to select "AM" or "PM".

6 Press **MENU** until normal screen appears.

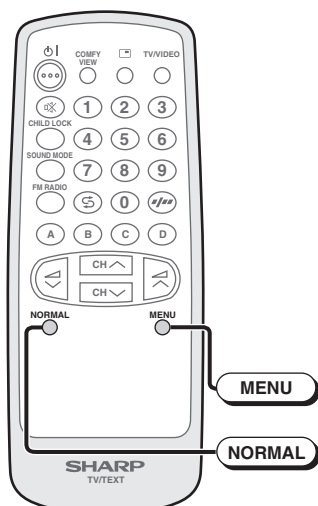
- Five minutes before the OFF TIMER is expires, the CLOCK and the OFF TIMER appears on the screen for several seconds.
- A flashing display of the CLOCK and the OFF TIMER will appears during the last few seconds.
- When the OFF TIMER has reached, the TV set enters the Standby mode.



NOTE

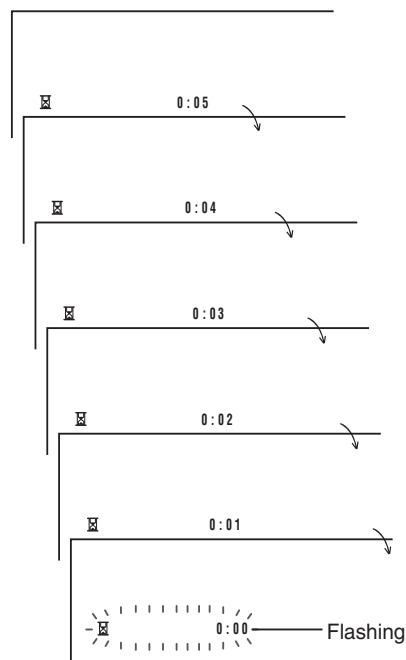
- Off Timer can be set from 12:00 AM to 12:00 PM.
For example: 11:59 AM \rightarrow 12:00 PM \rightarrow ...12:59 PM \rightarrow 1:00 PM \rightarrow ...11:59 PM \rightarrow 12:00 AM ...
- If CLOCK is not set, Off Timer cannot be set.
- If **0** is pressed for the 1st digit, the "0" will not appear after entering the 4th digit.
Example: "09:28 AM" \rightarrow "9:28 AM"
- To cancel the timer setting, press **NORMAL** when "OFF \square " is highlighted so as to set the timer to "--:--".
- The Off Timer is cancelled if the power is turned off or set to the Standby mode using **POWER** on the remote control or **POWER** on the TV set, or if the power is otherwise interrupted.

Reminder on-screen timer (continued)



6 Press **MENU** until normal screen appears.

- Five minutes before the preset length of time expires (in the example, after one hour and 45 minutes) and each minute thereafter, the remaining time appears on the screen for several seconds with the beeping sound. (When BEEP REMINDER is set to "ON")
- When the preset length of time has passed, "⏸ 0:00" flashes in red with the beeping sound. (When BEEP REMINDER is set to "ON")

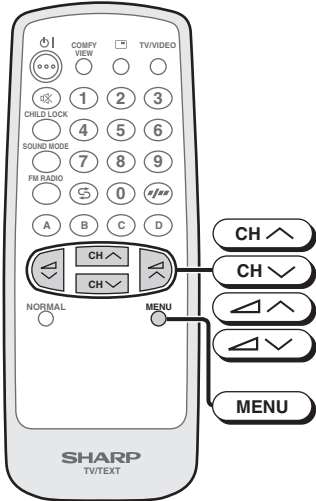


NOTE

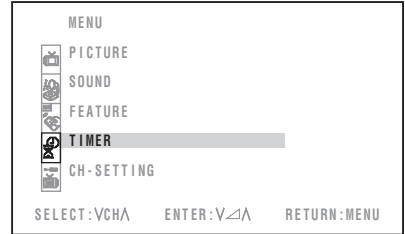
- This function also works in the Standby mode. Power is automatically turned on five minutes before the preset length of time expires. The TV set automatically returns to the Standby mode approximately 1 minute after the timer expired if no buttons are pressed on the TV set or remote control.
- The Reminder is cancelled if **(POWER)** on the TV set is pressed or if the power is otherwise interrupted.
- To cancel the timer setting, press **(NORMAL)** when "⏸" is highlighted so as to set the timer to "--:--".

View timer

It is a function of limiting TV viewing time for children by muting sound and video when View Timer has passed.

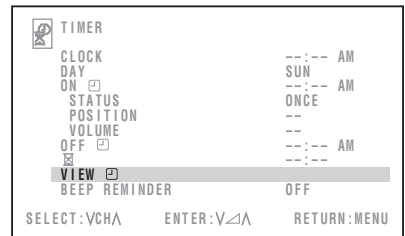


1 Press **MENU** to call MENU screen.



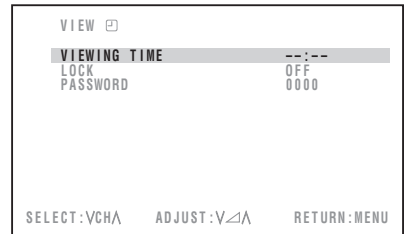
2 Press **CH ^** / **CH v** to select "TIMER".

3 Press **▲** / **▼** to display TIMER menu.

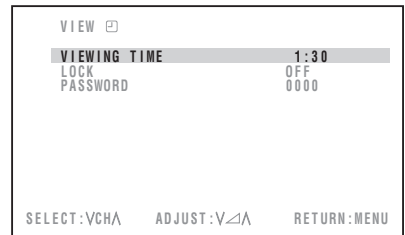


4 Press **CH ^** / **CH v** to select "VIEW".

5 Press **▲** / **▼** to display VIEW menu.



6 Press **CH ^** / **CH v** to select "VIEWING TIME".



7 Press **▲** / **▼** to set the time.

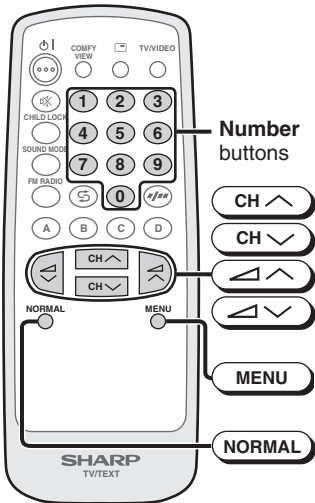
- The timer can be set in 30 minute intervals.
- The timer can be select in the following order:

--:-- ↔ 0:30 ↔ 1:00 ← → 10:00

- As soon as the time is entered, the timer starts to count down.
- It is reset to "--:--" when view timer has expired.

(continue)

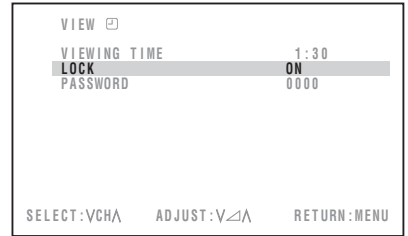
View timer (continued)



8 Press **CH ^** / **CH v** to select “LOCK”.

9 Press **▲** / **▼** to select “ON” or “OFF”.

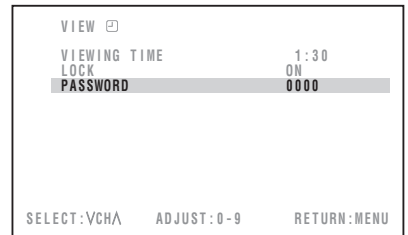
- ON: To lock the TV after View Timer has expired.
(Please see page 41 for details on “To watch the TV programme again”.)
- OFF: LOCK is deactivated.



10 Press **CH ^** / **CH v** to select “PASSWORD”.

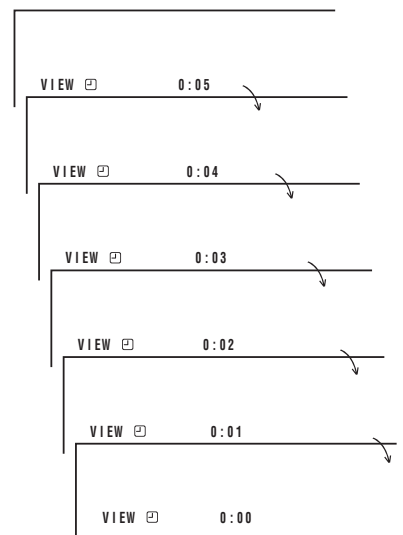
11 Enter 4 digits **PASSWORD** using **Number buttons (0-9)** on the remote control.
(For example: 0000)

- Press **NORMAL** to reset the entered number to “0000”.



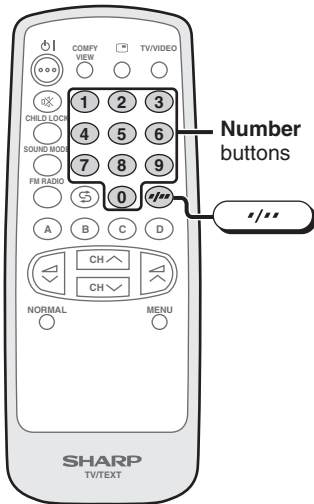
12 Press **MENU** until normal screen appears.

- For every 30 minute interval, the remaining time will be displayed for 4 seconds with the beeping sound.
(When BEEP REMINDER is set to “ON”)
- Five minutes before the preset length of time expires (in the example, after 1 hours and 25 minutes), the remaining time will be displayed every minute with the beeping sound.
(When BEEP REMINDER is set to “ON”)
- “0:00” will be displayed for 10 seconds just before VIEWING TIME is complete with the beeping sound.
(When BEEP REMINDER is set to “ON”)
- When the viewing time has passed, the TV set enters the standby mode.



(continue)

View timer (continued)




To watch the TV programme again (when the viewing time has passed)

- 1 Turn on power.**
- “VIEWING TIME OVER” will appear. If you do nothing, the TV will turn off in approximately 30 seconds.



- 2 Enter 4 digits PASSWORD using Number buttons (0~9) on the remote control. (For example: 0000)**



- Press  to clear the entered number.
- When you choose the correct PASSWORD, the VIEWING TIME is cancelled. If the wrong PASSWORD is entered, “PASSWORD INCORRECT” screen will appear for approximately 5 seconds. Repeat **step 2** to input the PASSWORD again.

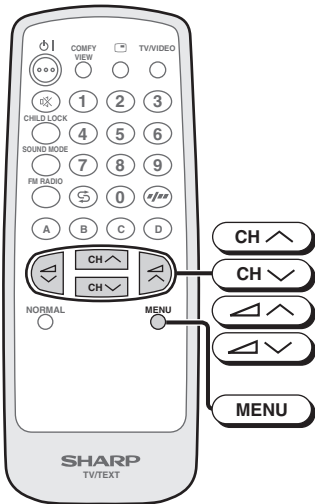


NOTE

- If you forget your PASSWORD, please input “2398” to enter, then repeat **steps 10** and **11** on **40** to change to new PASSWORD.
- The PASSWORD is shared for CHILD LOCK and VIEW TIMER.

Beep reminder

It is a function to alert with beeping sound that the Reminder and View Timer are expiring soon with the remaining time OSD displays.



1 Press **MENU** to call MENU screen.

2 Press **CH ^** / **CH v** to select "TIMER".

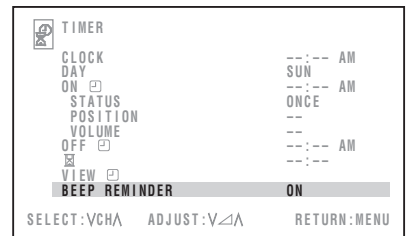
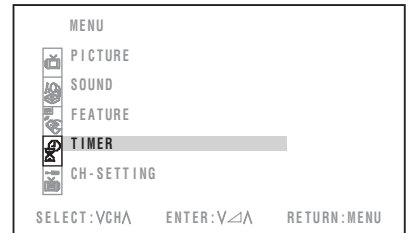
3 Press **left arrow** / **right arrow** to display TIMER menu.

4 Press **CH ^** / **CH v** to select "BEEP REMINDER".

5 Press **left arrow** / **right arrow** to select "ON" or "OFF".

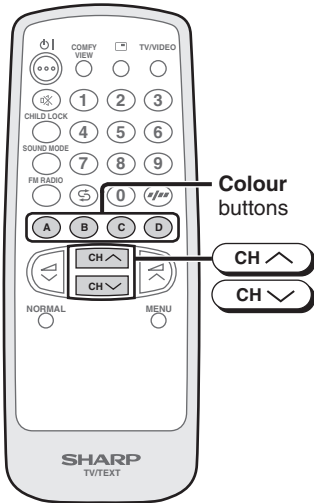
- ON: To alert users with beeping sound that the timer are expiring soon.
- OFF: The beeping sound is off.

6 Press **MENU** until normal screen appears.

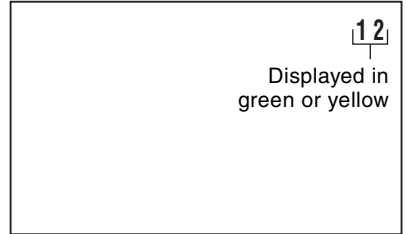


Favourite channels

The colour buttons can be used to select up to four favourite channels.



1 Press **CH ^** / **CH v** to select your favourite channel. (e.g. Channel 12)

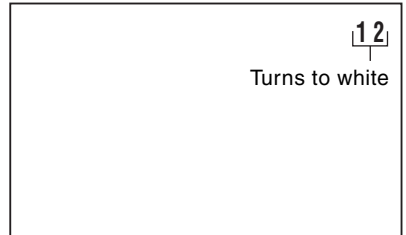


2 Press **A**, for example, until channel number turns white.

- The display will disappear after three seconds, and then the selected channel is preset.

3 To watch favourite channel, press **A**.

- The preset favourite channel will be displayed. (e.g. Channel 12)



4 To preset another favourite channel, repeat steps 1 and 2 above.

- To change a preset favourite channel, repeat steps 1 and 2 above.

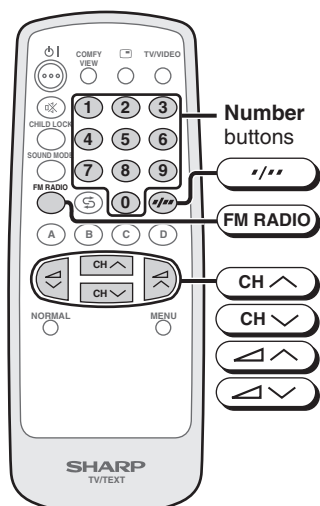


FM radio

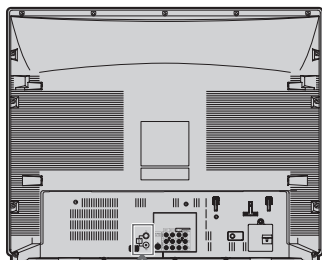
Allow users to listen FM Radio from the TV speakers.

Connecting a FM Radio Antenna

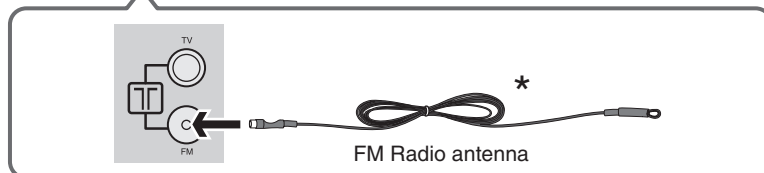
To listen FM Radio on TV set, plug FM antenna into FM antenna jack at the rear of the TV.



TV



* (Please refer to **2** for accessories included.)



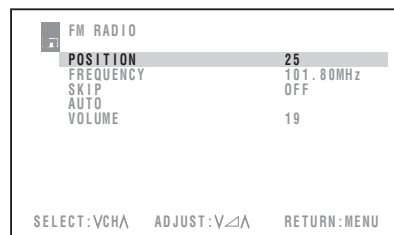
1 Press **FM RADIO** to display FM Radio setting menu.

2 Press **CH ^** / **CH v** to select desired setting.

3 Each time you press **▲** / **▼**, setting for individual items changes as follows:

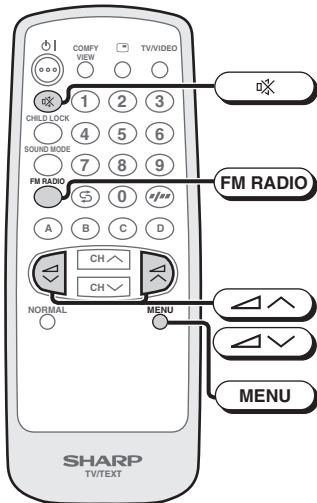
POSITION

- The radio channel position will be increased or decreased.
- The radio channel position also can be selected using **Number** buttons (0~9).
- Press ***/**** to select a one -digit channel (such as "5") or to select a two-digit channel. (such as "15")



(continue)

FM radio (continued)



FREQUENCY

- If / is pressed less than 2 seconds, FREQUENCY will be changed by step 50 KHz.
- If / is pressed more than 2 seconds, MANUAL tuning will be started.

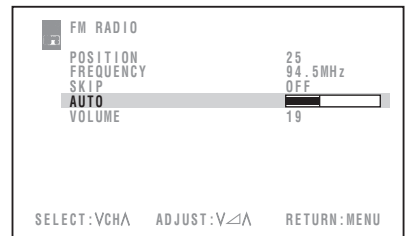
SKIP

ON ↔ OFF

When set "SKIP" to "ON", the radio channel position are set to SKIP. To turn off SKIP, press the number buttons to select the desired radio channel position and then set "SKIP" to "OFF".

AUTO

- When / is pressed, Auto tuning bar will appear and Auto Tuning start.
- While the Auto tuning is completed, Auto tuning bar will disappear and back to POSITION 1.



VOLUME

- : To increase the volume.
- : To decrease the volume.
- If is pressed, "MUTE" will appears on FM Radio setting menu and the sound is silenced.

4 Press / to return back to TV mode.

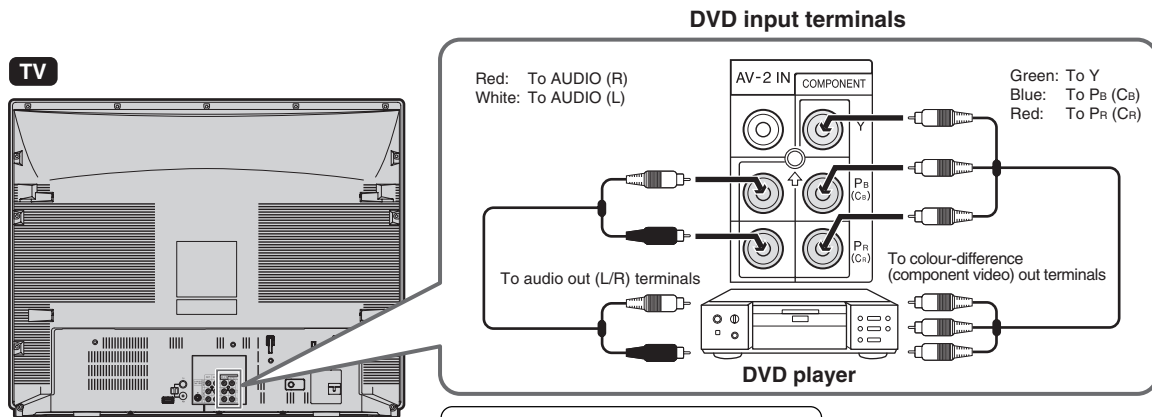
NOTE

- You may hear the mixed sound from both speaker (Audio L & Audio R), but not as stereo sound.
- FM Radio not functioning
 - When TV is power off
 - During Auto Preset/Manual Preset/Fine Preset mode
 - When LOCK TV is active
 - When VIEW TIMER locking
 - During CHILD LOCK is active

Connections

Connecting to a DVD player

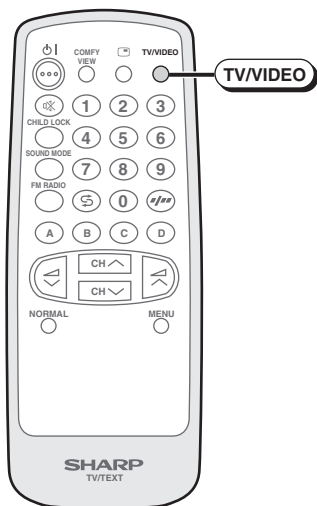
The DVD input terminals (COMPONENT-IN) on the rear of the TV can be used to input high-quality images from a DVD player.



Connecting the video terminals

DVD input terminals	DVD player	
COMPONENT-IN VIDEO	Y	Y or Y/Y
	P _B (C _B)	P _B (C _B) or B-Y/P _b
	P _R (C _R)	P _R (C _R) or R-Y/P _r

Watching DVD Playback



1 Press **TV/VIDEO** to select "COMPONENT", DVD input screen.



2 Turn on the DVD player and begin playback.



- NOTE**
- When connecting the TV to a DVD player via the Component-in terminals, the video and audio from the DVD player cannot be output through the Audio/Video out terminals on the TV.
 - Please refer to the operation manual of your DVD player for more information.
 - Be sure to fully insert the plugs of the connecting cables into the terminals on the TV set and video equipment. Failure to do so may result in noise.
 - Before connecting the cables, turn off the power of the TV set and video equipment.
 - Always remove the cables from the terminals by the plugs and not the cables themselves.

Connections

Connecting to an antenna

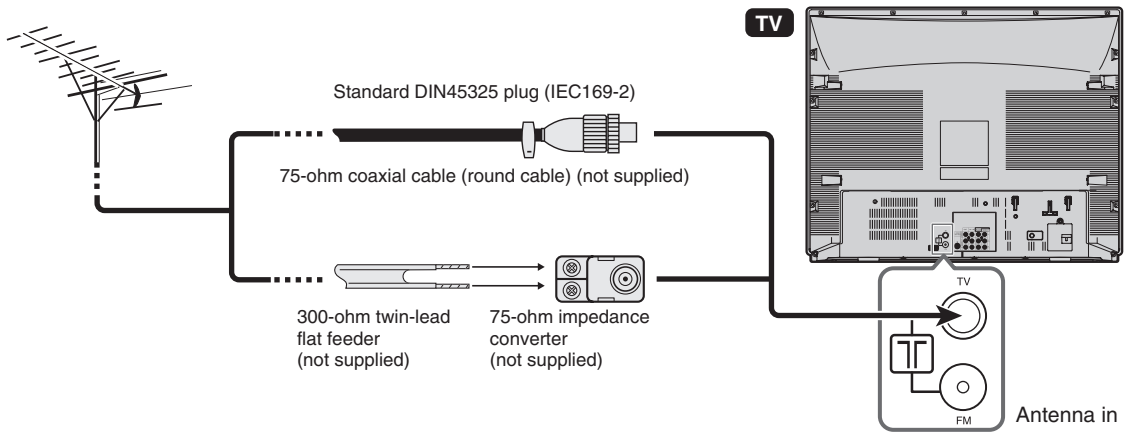
To enjoy a clearer picture, use an outdoor antenna. The following is a brief explanation of the types of connections that are used for coaxial and feeder cables.



If your outdoor antenna uses a 75-ohm coaxial cable with a standard DIN45325 plug (IEC 169-2), plug it into the antenna jack at the rear of the set.

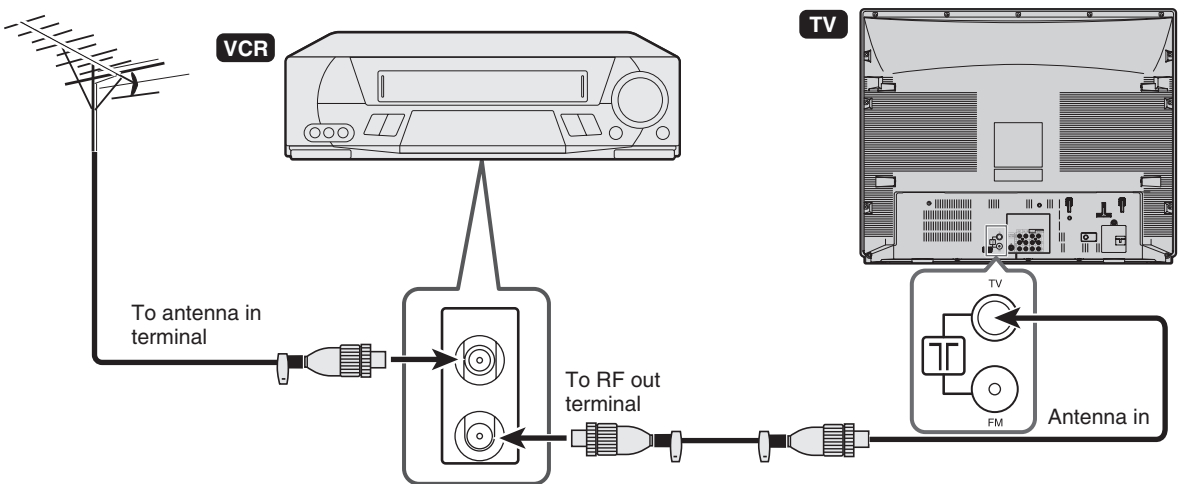


If your outdoor antenna uses a 300-ohm twin-lead flat feeder, connect a 300-ohm to 75-ohm impedance converter and plug it into the antenna jack at the rear of the set.



Connecting to an antenna via a VCR

You can also connect the TV set to the tuner on a VCR using the connection shown below.



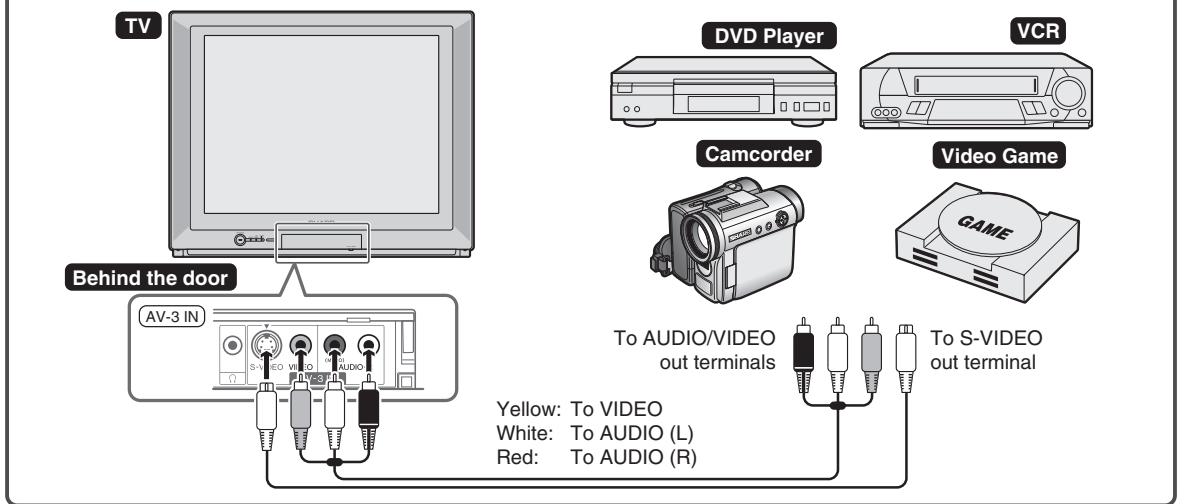
NOTE

- When using the RF terminal connection, set the TV to channel zero to make initial adjustments for the VCR.
- Turn off the power on the TV set and the VCR being connected before making the above connections. Be sure the cord plugs are fully inserted in the connection terminals.
- See the operation manual of your VCR for connection details.

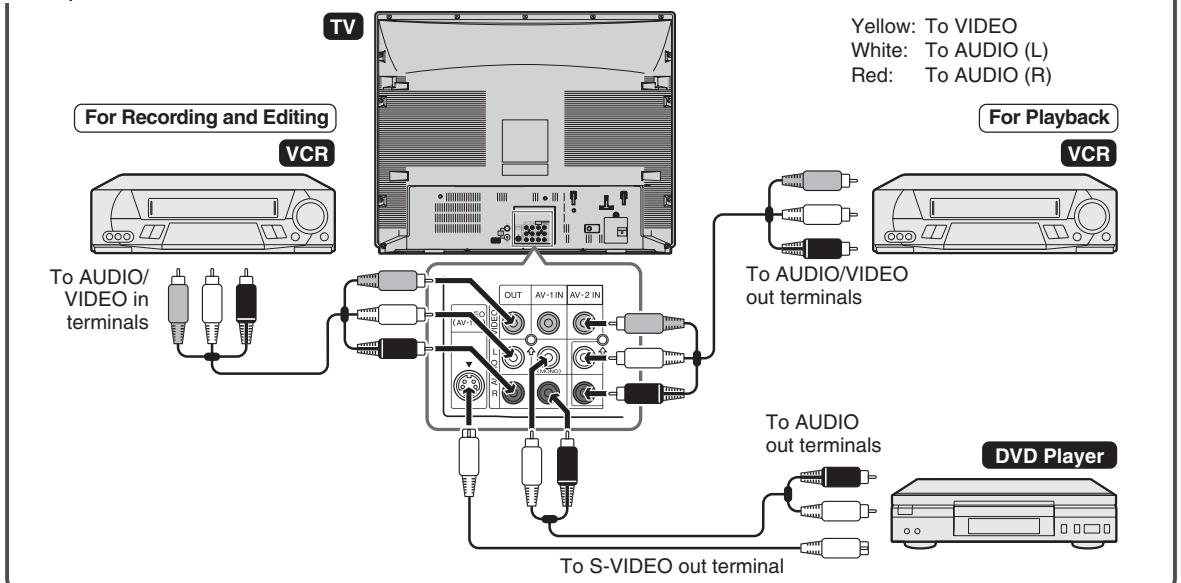
Connecting to video equipment

Enjoy playback from a video disc player, VCR or other video equipment by connecting them to this TV set using the Audio/Video in terminals.

Example use of front terminals



Example use of rear terminals



NOTE

- The S-Video Terminal has the priority over the AV terminal.
- The S-Video Terminal and Audio (L-R) terminals must be connected to playback DVD.
- SAV1 (S-Video 1) and AV1 cannot be use or plug in at the same time, blur picture might be appear. (SAV3 (S-Video 3) and AV3 as well)
- Turn off the power on the TV set and the VCR being connected before making the above connections. Be sure the cord plugs are fully inserted in the connection terminals.
- For playback of monaural audio, connect the external source to the audio input left terminal on the front or rear of the TV set (MONO) to hear the same sound from both speakers.
- The audiovisual cords required to connect the TV set with video equipment may differ from those shown in the above diagram. See the operation manual of your video equipment for connection details.
- The above recording and editing connections are for intended solely for personal use and not for the illegal copying of audiovisual material protected by copyright laws.



Troubleshooting

The following problems do not always indicate a hardware failure. Therefore, please use the troubleshooting guide below before calling for repair service.

If, after following the guide none of the remedies work, unplug the TV set and call for service.

Quick Service Check List	Problems												
	Remote control does not work.	Bars on screen	Picture distorted.	Picture rolls vertically.	No colour	Poor reception on some channels	Picture weak.	Picture lines or streaks	Picture ghosting	Picture blurred.	Sound OK, picture poor.	Picture OK, sound poor.	No picture or sound
Possible Causes/Remedies													
Try a new channel to check for possible station trouble.			●	●	●	●	●	●	●	●	●	●	●
TV not plugged in. Outlet power OFF.	●												●
① POWER switch of TV not ON.	●												●
Antenna not connected to terminal at the back of the TV set.					●	●	●		●		●		●
If outside antenna is used, check for broken wires.		●	●	●	●	●	●	●	●	●	●		●
Check for local interference.		●		●		●		●	●		●	●	
Turn OFF using the ① POWER switch, then turn ON again after a minute.	●												●
Adjust COLOUR control.					●		●				●		
Check batteries in the remote control.	●												
Try fine tuning to correct.			●		●		●			●	●		
Contrast setting in picture mode might be all the way to the minus side. Press the NORMAL button on the remote control to correct.											●		●
Increase the volume.												●	●

NOTE • This unit is equipped with a microprocessor. Its performance could be adversely affected by external electrical noise or interference. If this should happen, unplug the unit and plug it in again after a few minutes.



Specifications

MODEL		CX68RF5	
Receiving System			
TV Broadcasts/ VCR Playback	PAL-I PAL-B/G PAL-D/K SECAM-B/G SECAM D/K, K1 NTSC-M (NTSC standard)		
VCR Playback	NTSC 4.43/5.5 MHz/60 Hz NTSC 4.43/6.0 MHz/60 Hz NTSC 4.43/6.5 MHz/60 Hz NTSC 4.43/5.5 MHz/50 Hz NTSC 4.43/6.0 MHz/50 Hz NTSC 4.43/6.5 MHz/50 Hz	NTSC 3.58/5.5 MHz NTSC 3.58/6.0 MHz NTSC 3.58/6.5 MHz SECAM-I (6.0 MHz)	
VCR Playback (Using Video-in terminals)	SECAM-L (French SECAM)		
Laserdisc Player Playback (Using RF-in terminals)	PAL 5.5 MHz/60 Hz PAL 6.0 MHz/60 Hz PAL 6.5 MHz/60 Hz NTSC 3.58/4.5 MHz/50 Hz		
VCR Playback (Using S-Video in terminal)	S-VIDEO NTSC 3.58 MHz S-VIDEO NTSC 4.43 MHz S-VIDEO PAL S-VIDEO SECAM S-VIDEO SECAM-L		
Special VCR and VDP Playback	Video-in 50/60 Hz S-Video in 50/60 Hz		
Reception Channels			
PAL-B/G SECAM-B/G	VHF	AU0-AU12 ch	
	UHF	E21-E69 ch	
PAL-D/K SECAM-D/K, K1	VHF	C1-C12 ch, R1-R12 ch	
	UHF	C13-C57 ch, R21-R69 ch	
PAL-I	VHF	B-J ch	
	UHF	21-69 ch (Hong Kong)	
NTSC	VHF	2-13 ch (U.S.), 1-12 ch (Japan)	
	UHF	14-69 ch (U.S.), 13-62 ch (Japan)	
CATV	S1-S20 ch, S21-S41 ch (Hyper)		
Receiving Frequency	44.25 MHz – 863.25 MHz		
Receiving Frequency for FM Radio	87.50 MHz – 108.00 MHz		
Channel Tuning	100-Channel Electronic Tuner with Full Auto Tuning System		
Picture Tube	68cm Flat CRT		
Terminals	Audio/video input × 3 (front × 1, rear × 2), DVD input (COMPONENT-IN) × 1 (rear), Audio/video output × 1 (rear), Headphone jack × 1 (front), S-video input × 2 (front × 1, rear × 1), FM input × 1 (rear)		
Sound Output	20 W (Front speaker × 2)		
Power Source	AC 220 – 240V, 50Hz		
Power Consumption	135 W		
Dimensions	722 (W) × 582 (H) × 495 (D) mm		
Weight	43.5 kg (Approx.)		

NOTE

- Design and specifications are subject to change without notice.
- Receiving system: These receiving systems, encompassing all currently available technology, include those with planned broadcast, videotape and laserdisc hardware and software.
- Reception channels: Some examples of the main receivable channels are shown above.



Definition of Terms

Extended Pseudo Stereo (EPS)

The Incredible Mono module (I-Mono) generates two channels from one mono input signal. When the sound of the mono input signal is processed, the listener gets the impression that the sound is essentially a stereo signal.

Extended Spatial Stereo (ESS)

The listener gets the impression of a sound reproduced by two virtual speakers, positioned at a larger distance between each other than between the actual speakers. So, the stereo image is expanded by this widening sound effect.

AVL

The AVL reduces the audio input signal in the MAIN channel (L, R) to a selectable maximum output level if it exceeds this level at the input of the stage.

Note

Note

Note

Free Manuals Download Website

<http://myh66.com>

<http://usermanuals.us>

<http://www.somanuals.com>

<http://www.4manuals.cc>

<http://www.manual-lib.com>

<http://www.404manual.com>

<http://www.luxmanual.com>

<http://aubethermostatmanual.com>

Golf course search by state

<http://golfingnear.com>

Email search by domain

<http://emailbydomain.com>

Auto manuals search

<http://auto.somanuals.com>

TV manuals search

<http://tv.somanuals.com>