

# SHARP

## PORTABLE JUKEBOX RECORDER

MODEL

# HR-GB201

### OPERATION MANUAL

If you require any advice or assistance regarding your Sharp product, please visit our web-site [www.sharp.co.uk/customersupport](http://www.sharp.co.uk/customersupport). Customers without Internet access may telephone 08705 274277 during office hours (or (01) 676 0648 if telephoning from Ireland).

Thank you for purchasing this SHARP product. For the best performance, read this manual carefully. It will guide you in operating your SHARP product.



# Special Notes

---

## NOTES FOR USERS IN THE U.K. AND IRELAND

### SERVICE INFORMATION

In the unlikely event of your equipment requiring repair, please use the supplied postage paid label to send your unit to the Sharp repair centre or contact the dealer or supplier from whom it was purchased. Where this is not possible, please visit our web-site [www.sharp.co.uk/customersupport](http://www.sharp.co.uk/customersupport).

Customers without internet access may telephone 08705 274277 during office hours (or (01) 676 0648 if telephoning from Ireland).

Please note; all calls will be charged at local rate.

Certain replacement parts and accessories may be obtained from our main parts distributor.

WILLOW VALE ELECTRONICS LTD.  
0121 766 5414

In the unlikely event of this equipment requiring repair during the guarantee period, you will need to provide proof of the date of purchase to the repairing company. Please keep your invoice or receipt, which is supplied at the time of purchase.

### ■ Warnings

- The supplied AC adaptor contains no user serviceable parts. Never remove covers unless qualified to do so. It contains dangerous voltages, always remove the mains plug from the main outlet socket before any service operation or when not in use for a long period.
- To prevent fire or shock hazard, do not expose this appliance to dripping or splashing liquids. No objects filled with liquids, such as vases, shall be placed on the apparatus.
- Never use an AC adaptor other than the one specified. Otherwise, problems or serious hazards may be created.

### ■ Caution

- When recording important selections, make a preliminary test to ensure that the desired material is properly recorded.
- SHARP is not liable for damage or loss of your recording arising from malfunction of this unit.
- At full volume, prolonged listening to a personal stereo may damage the user's hearing. This model complies with the law if used with the correct earphones (model number RPHOE0001YCKZ). If the earphones are damaged in any way, please order using the model number given above.

### ■ Notes

- Recording and playback of any material may require consent, which SHARP is unable to give. Please refer particularly to the provisions of the Copyright Act 1956, the Dramatic and Musical Performers Protection Act 1958, the Performers Protection Acts 1963 and 1972 and to any subsequent statutory enactments and orders.
- This equipment complies with the requirements of Directives 89/336/EEC and 73/23/EEC as amended by 93/68/EEC.

### ■ About SHARP Music Manager

**SHARP Music Manager offers features to work with a hard disk drive. These include:**

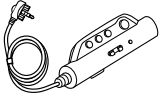

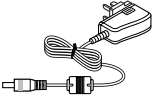
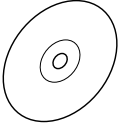
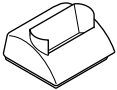


- Transfer of MP3, WMA and WAV files for playback.

### ■ About digital rights management

**Digital Rights Management protects rights of artists in the music industry and their digital works. Use of SHARP Music Manager is subject to the following restrictions:**

- Only MP3, WMA and WAV files can be played on a hard disk drive when transfer is performed using SHARP Music Manager.
- Only audio files directly recorded on a hard disk drive (using analogue line input or a microphone) can be transferred to your PC using SHARP Music Manager.

# Accessories

 <p><b>Remote Control x 1</b></p>	 <p><b>Earphones x 1 (with the ear pads)</b></p>	 <p><b>AC Adaptor (9JCRADPA8000AF) x 1</b></p>	 <p><b>CD-ROM x 1</b></p>
 <p><b>Multi-link Station (Cradle) x 1</b></p>	 <p><b>Travel Pouch x 1</b></p>	 <p><b>USB Connection Cable x 1</b></p>	

**Notes:**

- Only the above accessories are included.
- The AC adaptor may be different from the one in the drawing.

**Warning:**

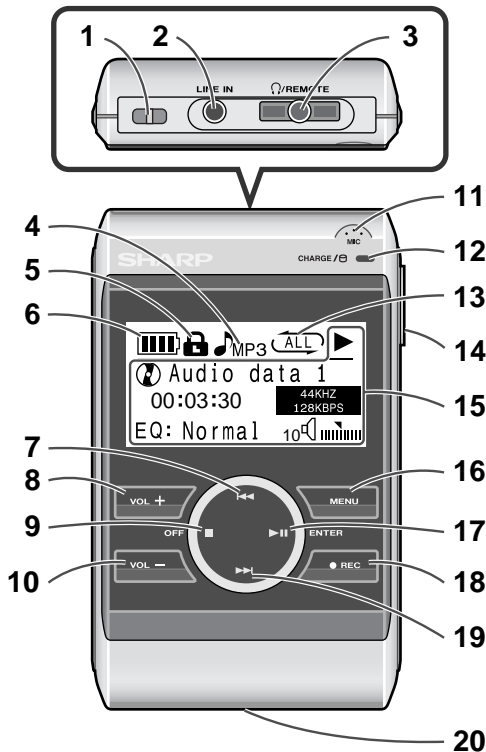
- The AC adaptor supplied with the HR-GB201 must not be used with other equipment.
- Use only the supplied AC adaptor.

# Contents

	Page		Page
<b>■ General Information</b>		<b>■ Voice Recording</b>	
Controls and indicators .....	3, 4	Recording with the built-in microphone .....	30
Precautions .....	5	Playing recorded voice data .....	31, 32
General notes .....	6	Advanced playback .....	33
<b>■ Power Source</b>		<b>■ Recording from CD</b>	
Charging the main unit .....	7, 8	Recording from a CD player .....	34, 35
Turning the power on .....	8	Playing recorded music data .....	35, 36
<b>■ Software Installation</b>		<b>■ Advanced Features</b>	
System requirements .....	9	Transferring image data from a	
Outline of SHARP Music Manager .....	10, 11	digital camera .....	37, 38
Installing SHARP Music Manager .....	12	Changing default settings .....	39 - 41
<b>■ Transferring from PC</b>		Hold function .....	41
Connecting the unit to a PC .....	13	Listening to sound using the	
Disconnecting the unit .....	14	external equipment .....	42
Starting SHARP Music Manager .....	15, 16	<b>■ References</b>	
Transferring audio data .....	17, 18	Folder structure .....	43
Editing playlists .....	19, 20	Error messages .....	44
Folder settings .....	21	Troubleshooting .....	44 - 46
Editing music information .....	22	Maintenance .....	46
Playing transferred audio data .....	23, 24	Specifications .....	47, 48
Advanced playback .....	25 - 29		

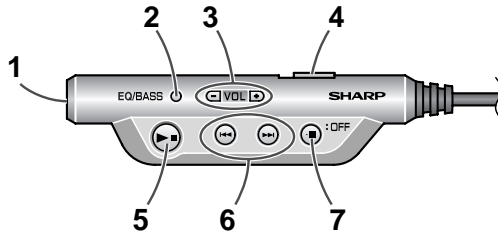
	2-
	8
	10
	14
	30
	34
	38
	44

# Controls and indicators



## ■ Main unit

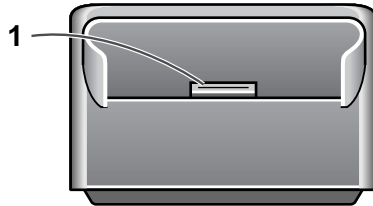
	Reference page
1. Strap Eyelet	
2. Line Input Socket	34
3. Earphone Output/ Remote Control Socket	23, 31, 35
4. Data Format Indicator	23, 33
5. Hold Indicator	41
6. Battery Indicator	8
7. Skip Down/Fast Reverse Button	23, 25, 31, 36
8. Volume Up Button	24, 26
9. Stop/Power Off Button	8, 23, 32, 36
10. Volume Down Button	24, 26
11. Microphone	30
12. Battery Charge/ Hard Disk Access Indicator	7, 13
13. Repeat/Random Indicator	33
14. Hold Switch	41
15. Character/Time/ Information Indicator	8, 23, 30, 34, 43
The display varies depending on the operation.	
16. Menu Button	24, 26, 31, 36
17. Play/Pause/Power On/ Enter Button	8, 23, 29, 31, 32, 36
18. Record Button	30, 34
19. Skip Up/Fast Forward Button	23, 25, 31, 36
20. Multi-link Station Connection Terminal	7



#### ■ Remote control unit

	Reference page
1. Earphone Socket .....	23, 31, 35
2. Equaliser/Bass Button .....	24, 26, 31, 36
3. Volume Up and Down Buttons .....	24, 26
4. Hold Switch .....	41
5. Play/Pause/Power On/ Enter Button .....	8, 23, 29, 31, 32, 36
6. Skip Up/Skip Down/Fast Forward/ Fast Reverse Buttons .....	23, 25, 31, 36
7. Stop/Power Off Button .....	8, 23, 32, 36

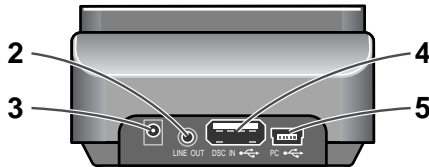
#### Front



#### ■ Multi-link station (Cradle)

	Reference page
1. Connection Terminal (to Main Unit) .....	7
2. Line Output Socket (Variable) .....	42
3. 5 V DC Input Socket .....	7
4. USB Socket (A type) .....	37
5. USB Socket (Mini B type) .....	13

#### Rear



# Precautions

## ■ Important

- Do not wear your earphones when you are crossing streets or near traffic.
- Do not use your earphones whilst driving a motor vehicle, it may create a traffic hazard and may be illegal. Remember to obey all of the safety rules in your area.
- Do not play the unit at a high volume. Hearing experts advise against extended listening at high volume levels.
- If you experience ringing in your ears, reduce the volume or discontinue use.
- No naked flame sources, such as lighted candles, should be placed on the apparatus.
- The apparatus is designed for use in moderate climate.
- In case of an electrical storm, unplug the AC adaptor for safety.
- This unit should only be used within the range of 0°C - 40°C (32°F - 104°F).



## To avoid accidental electric shock or other possible problems, observe the precautions listed below.

- Do not disassemble or modify the unit.
- Do not drop or subject the unit to shock.
- Do not use the unit near open flames.
- Do not spill liquid on the unit.
- Do not use an external power supply, other than the 5 V DC supplied with this unit, as it may damage the unit.
- SHARP is not responsible for damage due to improper use. Refer all servicing to a SHARP authorised service centre.

## ■ Storing the unit

### Avoid using or leaving the unit in the following places.

- Places exposed to direct sunlight for many hours (especially in cars with the doors and windows closed) or near heaters. (The cabinet may deform, change colour or the unit may malfunction.)
- Places exposed to excessive dust.
- Places exposed to water.
- Places where temperatures are excessively high or low.
- Places (bathrooms) where the humidity is extremely high.
- Places with strong magnetic fields such as TVs or loudspeakers.
- Places exposed to vibration.
- Places where sand can easily enter the inside of the unit (beaches etc.).
- If the unit is used near radio tuners or TVs, noise and/or picture interference may result. If you experience these problems, move the unit away from such devices.

It is not recommended to put this unit into a rear pocket, as this may damage the product when sitting.



Using this unit near mobile phones may cause noise pickup. If it occurs, move it away from them.



## ■ Copyright

Copyright laws protect sounds, images, computer programmes, databases, other materials and copyright holders. Duplicated material is limited to private use only. Use of materials beyond this limit or without permission of copyright holders may constitute copyright infringement, and be subject to criminal punishment.



# General notes

## ■ Software and operation manual

- Reproduction in part or in whole without prior permission is prohibited.
- The attached software and manual may be used only on a single computer.
- In no event shall Sharp be liable for any damages to you or any other party arising from the use of this product.
- Before using third-party connecting devices or software, consult the dealer or manufacturer. Sharp shall not be liable for any damages caused by malfunction resulting from the use of unspecified products.
- Designs, specifications, and contents are subject to change without notice for improvement.
- Screen shots in this manual are for reference only. Sharp shall not be liable for any errors in this manual.

## ■ Trademarks

- IBM and PC/AT are registered trademarks of International Business Machines Corporation.
- Macintosh is a trademark of Apple Computer, Inc., registered in the United States and other countries.
- Microsoft and Windows are registered trademarks of Microsoft Corporation in the United States and/or other countries.
- MMX and Pentium are trademarks or registered trademarks of Intel Corporation.
- All brand names and product names are trademarks or registered trademarks of their respective owners.

In the unlikely event that there is some problem like loss of recorded audio content due to HDD malfunction, please be aware beforehand that Sharp will bear no responsibility to compensate for the content which could not be recorded or edited, for the loss of recorded or edited audio content, or for other related direct or indirect damages.

## ■ If a power failure occurs

- The content being recorded will be damaged if power failure occurs.
- The content being played back may be damaged.

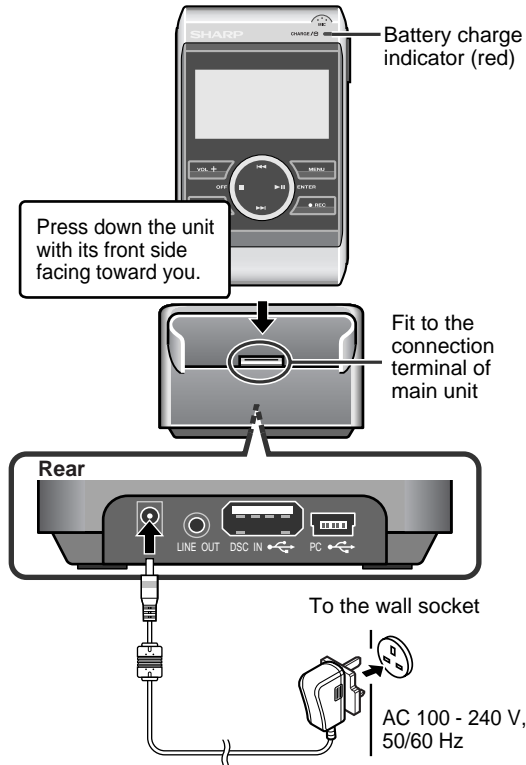
## ■ For important recording

- If the HDD malfunctions, the content recorded on the HDD may be lost. If you wish to save content permanently, we recommend copying or moving the content to a PC, etc..

## ■ Audio data

- Back up your data stored on this product periodically in case of loss or alteration.
- Sharp shall not be liable for any damages or loss of data resulting from defects in this product or your computer.
- Audio data transferred to this product cannot be played back on other HR-GB201 or equipment.

# Charging the main unit



- 1** Connect the AC adaptor to the DC IN 5V socket on the cradle.
- 2** Plug the AC adaptor into the wall socket.
- 3** Place the main unit on the cradle.
  - Press down the unit firmly.
  - Battery charge indicator (red) lights up.

## ■ About charging time

The battery fully charges in approx. 4 hours, and the battery charge indicator goes out.

### Notes:

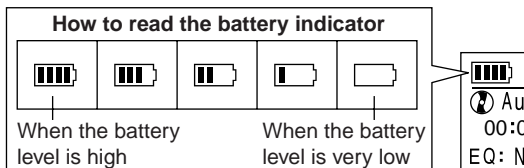
- Charge the battery within the range of 5°C - 35°C (41°F - 95°F).
- The unit and the cradle may get warm during or after charge. This is normal.
- When charging battery for the first time or after a long period of disuse, battery life may be shorter. Repeat charge/discharge cycle 4 to 5 times to restore the full capacity.

## ■ Built-in battery

- The built-in battery may discharge completely when this product is left unused for long periods. Recharge the battery before use.
- Charging time depends on the battery condition and ambient temperature.
- At low temperatures, continuous playing time is shortened.
- Sharp shall not be liable for any damages resulting from loss or alteration of data caused by malfunction, repairs, or complete discharge of the battery.

## ■ Checking the remaining amount of battery level

The remaining amount of battery level is shown by the battery indicator during operation.



## ■ Battery replacement

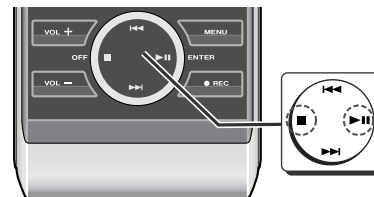
**This product has a built-in battery.**

- The capacity after 300 cycles is expected to be equal to or more than 80% of the rated capacity. The capacity after 500 cycles is expected to be equal to or more than 60% of the rated capacity.
- The battery life and the operating time may be shortened by usage conditions, long periods of disuse, etc.
- The battery is a consumable item. If it does not charge or the operating time is noticeably shorter than normal, replace with a new battery.
- **Replacement should be carried out by qualified personnel only. Contact your dealer or local SHARP service facility. Never disassemble this product for this purpose.**

### Caution:

Pay attention to the environment when disposing of this product (the built-in battery should be handled separately).

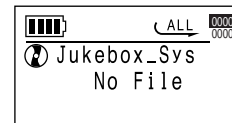
## Turning the power on



**Hold down the ■ button for 2 seconds or more.**

The startup screen appears for a while.

Then the display will look like a file browser.



**To turn off the power:**

Hold down the ■ button for 2 seconds or more. The following screen appears before the unit turns off.



HR-GB201

Power Source  
-Charging the main unit/Turning the power on-

# System requirements

The following hardware and software are required for installation.

## Hardware and software requirements \*1

<b>Computer</b>	IBM PC/AT-compatible (not operable with Macintosh)
<b>OS</b>	Microsoft® Windows® 98SE/Me/2000 Professional/XP Professional/XP Home Edition standard install *2
<b>CPU</b>	Windows® XP Professional/XP Home Edition Pentium® II 300 MHz or higher (MMX® Pentium® 233 MHz minimum) Windows® Millennium Edition, 2000 Professional, 98 Second Edition MMX® Pentium® 233 MHz or higher (MMX® Pentium® 200 MHz minimum)
<b>Memory</b>	64 MB minimum (128 MB or more recommended for Windows® XP)
<b>Hard disk space</b>	10 MB minimum required *3
<b>Drive</b>	CD-ROM drive
<b>Interface</b>	Available USB port (USB 2.0/1.1)
<b>Display</b>	1024 x 768 pixels or better, high colour (16-bit) or better

\*1 Operation is not guaranteed on all the compatible computers.

\*2 Operation is not guaranteed on computers running upgraded OS or multiple OS with dual-boot. NTFS format can be used for standard installation only.

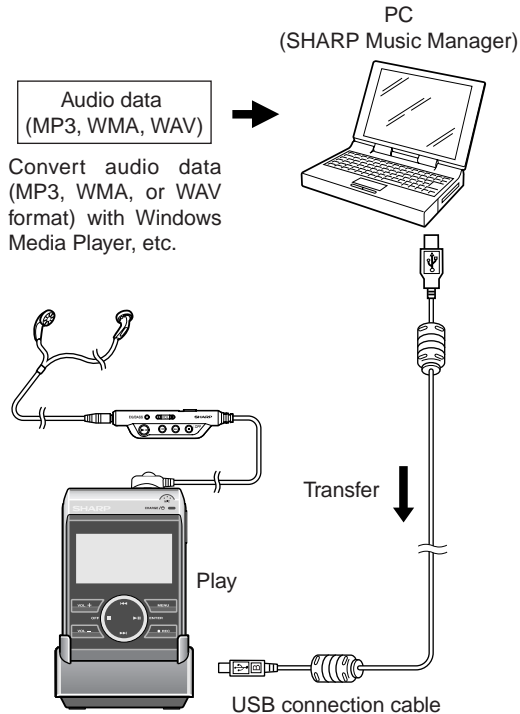
\*3 Depending on the Windows version, more free space may be necessary. Music data also requires more space.

### Notes:

- You cannot install SHARP Music Manager on Windows 98 or earlier. Use SHARP Music Manager in Windows 98 Second Edition or later.
- Simultaneous use of other security systems may cause problems (application deadlock, automatic system reboot, etc.).

# Outline of SHARP Music Manager

HR-GB201



SHARP Music Manager is software that allows you to transfer audio data (MP3, WMA, or WAV files) to the main unit. You can manage the data and edit playlists.

## ■ Transferring audio data

- 1 Transfer audio data to a PC using Windows Media Player, etc. For details, refer to "HELP" of the software.
- 2 Transfer the audio data to the unit (see page 17).
- 3 Play back the audio data (see page 23).

### Notes:

- Audio data transferred by SHARP Music Manager can only be played back on this unit.
- This unit cannot play audio data transferred by other applications.

Software Installation  
-Outline of SHARP Music Manager-

## Outline of SHARP Music Manager (continued)

### MP3 (MPEG-1 Audio Layer 3):

MPEG is an international standard developed by Moving Picture Experts Group, a working group of ISO. Audio data can be compressed to about one-tenth to one-twelfth its original size.

### WMA (Windows Media Audio):

WMA is an audio compression format developed by Microsoft, or a file encoded in this format.

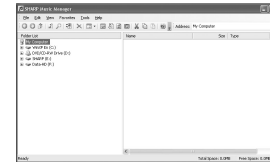
### WAV (Wave Sound) file:

WAV is an audio file widely used in Windows.

### ■ Creating/editing playlists

- 1 Transfer audio data to the unit.
- 2 Create a playlist (see page 19).
- 3 Play audio data from the playlist (see page 29).

#### Navigation window



Edit the playlist

#### Playlist edit window



# Installing SHARP Music Manager

HR-GB201

Exit all applications before starting the installation.

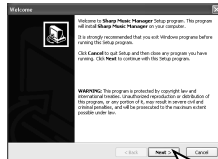
## 1 Insert the supplied CD-ROM into your CD-ROM drive.

- The "Software Installer" screen appears.



## 2 Click the "Install SMM" button.

- The "Welcome" screen appears.



## 3 Click the "Next" button.

- The "Choose Destination Location" screen appears.

## 4 Click the "Next" button.

- The "Set Program Shortcuts" screen appears.

## 5 Click the "Next" button.

## 6 Click the "Next" button.



- When the installation is completed, the "Setup Complete" screen appears.

## 7 Click the "Finish" button.

- Check the "Yes, Launch the program file." box. After installation, SHARP Music Manager starts.

### Notes:

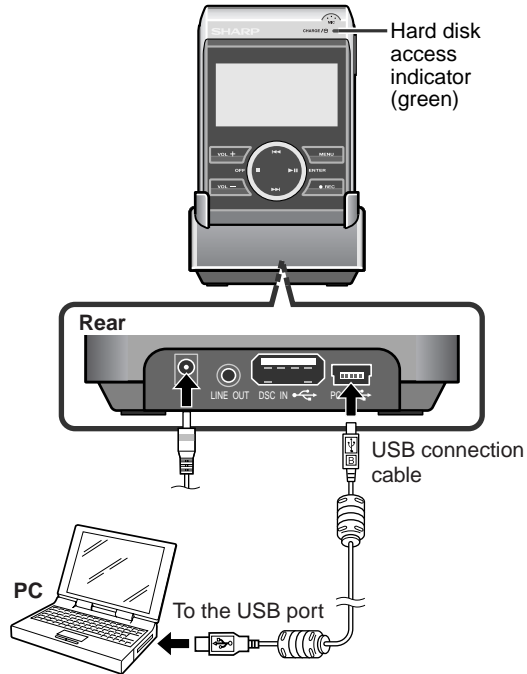
- If the "Software Installer" screen does not appear in step 1, double click the "autorun.exe" stored on the CD-ROM from Explorer, etc.
- When you use Windows 98 Second Edition, insert the supplied CD-ROM and click the "Install W98SE Driver" button to install the driver.



Software Installation  
-Installing SHARP Music Manager-

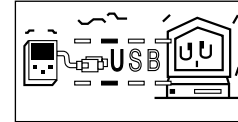
## Connecting the unit to a PC

Connect the unit to a PC to transfer audio data. To disconnect the unit, see "Disconnecting the unit" on page 14.



- 1** Turn on the unit (see page 8).
- 2** Connect the AC adaptor to the DC IN 5V socket and place the unit on the cradle (see page 7).
- 3** Connect the unit to a PC with a USB connection cable.

- The hard disk access indicator (green) flashes.
- Whilst the unit is connected to the PC, the screen below appears.



### Caution:

- It is recommended to use the AC adaptor when connecting the unit to a PC. Otherwise data on the unit may be corrupted when batteries run out.
- Do not disconnect a USB connection cable or remove the unit from the cradle whilst transferring data from a PC. Data on the unit may be corrupted.

### Note:

The operation buttons on the main unit do not work if it is connected to a PC. Disconnect the PC to operate on the unit (see page 14).



# Disconnecting the unit

For details, refer to the operation manual for the PC.

## ■ Windows 98 Second Edition

- 1 Double click "Safely Remove hardware" on the taskbar.
- 2 Select "TOSHIBA MK2004GAL USB Device", and then click "Stop".
- 3 Select "TOSHIBA MK2004GAL USB Device", and then click "OK".
- 4 "The USB Mass Storage Device can now be safely removed from the system" appears. Click the "OK" button and disconnect the USB connection cable from the PC.

## ■ Windows Millennium Edition

- 1 Click "Remove Hardware" on the taskbar.
- 2 Click "USB Disk - Stop Drive".
- 3 "USB Disk can now be safely removed" appears. Click the "OK" button and disconnect the USB connection cable from the PC.

## ■ Windows 2000 Professional

- 1 Click "Unplug or eject hardware" on the taskbar.
- 2 Click "USB Mass Storage Device - Stop Drive".
- 3 "USB Mass Storage Device can now be safely removed" appears. Click the "OK" button and disconnect the USB connection cable from the PC.

## ■ Windows XP Home Edition/Professional

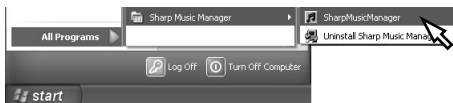
- 1 Click "Safely Remove Hardware" on the taskbar.
- 2 Click "Safely remove USB Mass Storage Device - Drive(\*:\*)".
- 3 "Safe To Remove Hardware" appears. Click the message and disconnect the USB connection cable from the PC.

(\*) Drive letter of this unit

# Starting SHARP Music Manager

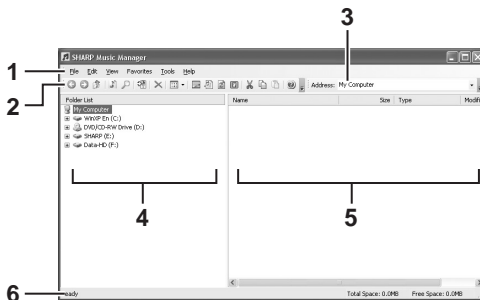
## ■ How to start

From the "Start" menu, click "All Programs", "Sharp Music Manager", and then "SharpMusicManager".



The navigation window appears.

## ■ Navigation window



1. Menu bar
2. Standard bar
3. Address bar

4. Folder tree
5. File list
6. Status bar

## Folder tree and file list:

- The folder tree shows a structure of drives and folders. HR-GB201 appears as "SHARP" (drive name).
- When you select a drive or folder, the contents within are displayed in the file list.
- To display or hide the lower folders, Click the "☰" or "☷" indicator next to drive/folder icons.

## Standard bar:



- |                    |                              |
|--------------------|------------------------------|
| 1. Back            | 9. Edit Playlist             |
| 2. Forward         | 10. Edit Music Info          |
| 3. Up One Level    | 11. Update Music Info        |
| 4. Audio File Only | 12. Set Start (See page 18.) |
| 5. Search          | 13. Cut                      |
| 6. Send To Player  | 14. Copy                     |
| 7. Delete          | 15. Paste                    |
| 8. Views           | 16. Help                     |

## Note:

You can also access the functions on the standard bar from the menu bar.

## ■ Menu bar



## 1. File

<b>New Folder</b>	Create new folders in a selected folder. *1
<b>Open...</b>	Execute applications according to the file extension.
<b>Delete</b>	Delete a selected folder/file.
<b>Rename</b>	Change folder names. *2
<b>Properties</b>	Display folder/file properties.
<b>Exit</b>	Exit SHARP Music Manager.

- (\*1) You cannot create a new folder in the "Jukebox\_Sys" folder on the "SHARP" drive.  
 (\*2) File names cannot be changed on SHARP Music Manager.

## 2. Edit

<b>Cut</b>	Cut a selected folder/file.
<b>Copy</b>	Copy a selected folder/file.
<b>Paste</b>	Move a cut/copied folder/file to a selected folder.
<b>Delete</b>	Delete a selected folder/file.
<b>Send To Player</b>	Transfer audio data or folders containing audio data to the "Jukebox_Sys" folder.

## 3. View

<b>ToolBars</b>	Display or hide the standard bar and address bar.
<b>Status Bar</b>	Display or hide the status bar.
<b>Folder Tree</b>	Display or hide the folder tree.

<b>Audio File Only</b>	Display all data or audio file only.
<b>Back</b>	Display the previous folder.
<b>Forward</b>	Display the next folder.
<b>Up One Level</b>	Display the upper folder.
<b>Refresh</b>	Update the display of files and folders.

## 4. Favorites

<b>Add To Favorites</b>	Add folders to a favourite list.
<b>Organize Favorites</b>	Organise a favourite list.

## 5. Tools

<b>Search</b>	Search files.
<b>Edit Playlist</b>	The playlist edit window appears (see page 19).
<b>Edit Music Info</b>	Edit audio data information (see page 22).
<b>Update Music Info</b>	Update the ID3 tag management information of all audio data within the device.

## 6. Help

<b>Help Topics</b>	The help window appears.
<b>About Sharp-MusicManager...</b>	Version information appears.

# Transferring audio data

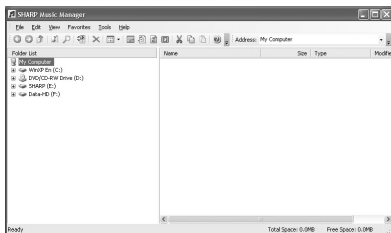
## ■ From PC to the unit

You can transfer audio data (MP3, WMA or WAV format) to the unit.

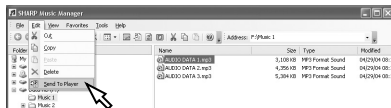
### 1 Connect the unit to a PC (see page 13).

### 2 Start SHARP Music Manager.

- The navigation window appears.



### 3 Select audio data on the PC and click "Send To Player" on the "Edit" menu.



- Audio data is transferred to the "Jukebox\_Sys" folder on the "SHARP" drive.

## Caution:

- Once transferred to the unit, audio data cannot be transferred back to the PC. Keep the original data on the PC.
- To disconnect the unit from the PC, click the icon on the taskbar (see page 14).

## Notes:

- You can also transfer an entire folder (up to 9 subfolders).
- Audio data are sorted alphabetically after being transferred to the unit.
- You can also transfer in the following way; select audio data, click "Copy" on the "Edit" menu, select the "SHARP" drive and click "Paste" on the "Edit" menu.

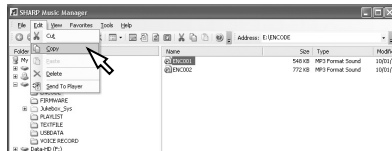
## ■ From the unit to PC

You can transfer data recorded with the built-in microphone or LINE IN to a PC (see pages 30 or 34 - 35).

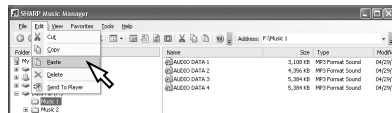
### 1 Start SHARP Music Manager.

- The navigation window appears.

### 2 Select audio data in the "ENCODE" or "VOICE RECORD" folder on the "SHARP" drive, and click "Copy" on the "Edit" menu.



### 3 Select a target folder on the PC and click "Paste" on the "Edit" menu.



#### Note:

Audio data in the "Jukebox\_Sys" folder cannot be transferred.

## ■ Deleting audio data from the unit

### 1 Start SHARP Music Manager.

- The navigation window appears.

### 2 Select audio data to delete and click "Delete" on the "Edit" menu.

- The "Confirm File Delete" window appears.

### 3 Click the "Yes" button.

#### Caution:

"Are you sure you want to send (file name) to the Recycle Bin?" appears. When you click "Yes", the audio data is permanently deleted (not moved to the Recycle Bin).

#### Note:

Right-click operations are not available for audio data in the "Jukebox\_Sys" folder.

## ■ Setting the startup folder

Specify a folder to be displayed first when SHARP Music Manager starts.

### 1 Select a folder and click "Set Start" on the standard bar (see page 15).

- The "SharpMusicManager" dialogue box appears.

### 2 Click the "OK" button.

- A startup folder is created.

## Editing playlists

Create a playlist to play audio data in your desired order.

### ■ Creating a playlist

- 1** Connect the unit to a PC (see page 13).
- 2** Start SHARP Music Manager.
  - The navigation window appears.
- 3** Click "Edit Playlist" on the "Tools" menu.
  - The playlist edit window appears.



- 4** Click the "New" button.
  - The "New M3U File" dialogue box appears. Name the playlist and save it to the "PLAYLIST" folder on the "SHARP" drive.
- 5** Click the "Add" button.
  - The "Open File" dialogue box appears.

### **6** Select audio data to add to the playlist.

- The data is added to the playlist.
- Select from MP3, WMA and WAV files.
- Only the audio data on the "SHARP" drive can be added.
- Change the order with the "Upward" and "Downward" buttons. Playback starts from the top of the playlist.

### **7** Click the "Save" button.

- If the "File Save As" dialogue box appears, name and save the playlist. Select the "PLAYLIST" folder on the "SHARP" drive as a location.

### **8** Click the "Exit" button.

- Playlist edit window closes.

#### **Note:**

Playlist files have the extension "m3u".

## ■ Editing playlists

**1** Connect the unit to a PC (see page 13).

**2** Start SHARP Music Manager.

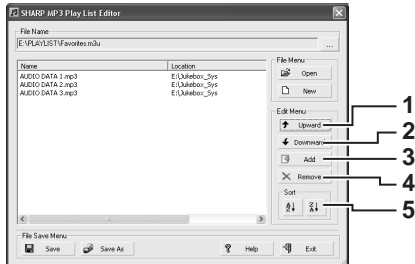
- The navigation window appears.

**3** Click "Edit Playlist" on the "Tools" menu.

**4** Click the "Open" button and select a desired playlist.

- The playlist edit window appears.
- Only files with the extension "m3u" can be selected.

**5** Edit the playlist.



1. Move up audio data.
2. Move down audio data.
3. Add audio data to the playlist.
4. Remove audio data from the playlist.
5. Sort audio data in the playlist by name.

**6** Click the "Save" button.

- The playlist is overwritten.
- To change the name, click the "Save As" button.
- Click the "Exit" button to exit without saving changes.

# Folder settings

## ■ Assigning folders

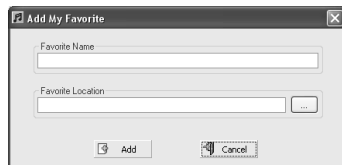
Assign folders to open them quickly.

### 1 Start SHARP Music Manager.

- The navigation window appears.

### 2 Click "Add To Favorites" on the "Favorites" menu.

- The "Add My Favorite" dialogue box appears.



### 3 Enter the name and location of a folder and click the "Add" button.

- The favourite name is assigned.
- Click the "..." button to search the folder location.

## ■ Opening assigned folders

### 1 Click "Favorites" menu.

### 2 Select an assigned favourite name.

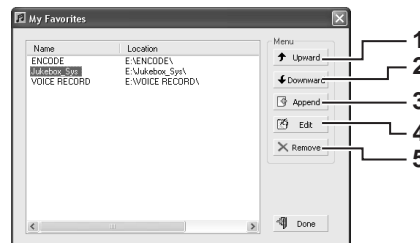
- The folder of the favourite name opens.

## ■ Organising folders

### 1 Click "Organize Favorites" on the "Favorites" menu.

- The "My Favorites" dialogue box appears.

### 2 Select a favourite name to organise from the "My Favorites" dialogue box.



1. Move up a favourite name.
2. Move down a favourite name.
3. Add a new favourite name. The "Add My Favorite" dialogue box appears. A new favourite name is added to the bottom of the favourite name list.
4. Rename a selected favourite name.
5. Remove a favourite name.

### 3 Click the "Done" button.

- The "My Favorites" dialogue box closes and the change is saved.

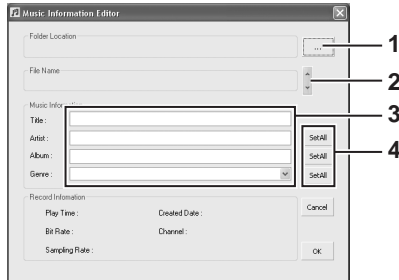


# Editing music information

HR-GB201

You can change information of audio data (MP3 format only).

- 1 Connect the unit to a PC (see page 13).**
- 2 Start SHARP Music Manager.**
  - The navigation window appears.
- 3 Click "Edit Music Info" on the "Tools" menu.**
  - The "Music Information Editor" dialogue box appears.



1. Select a folder.
2. Select audio data (MP3 format only).
3. Enter information (title, artist name, etc.)
4. You can apply the information ("Artist", "Album" and "Genre") entered in step 3 to all audio data in the folder selected in step 1. Click the "SetAll" button on the right of each field box.

## 4 Click the "OK" button.

- The "Music Information Editor" dialogue box closes.

## 5 Click "Update Music Info" on the "Tools" menu.

- The information is refreshed.

### Note:

There is an entry limit for each information.

Title: 30 characters

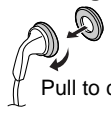
Artist: 30 characters

Album: 30 characters

Genre: Select from the pull-down menu.

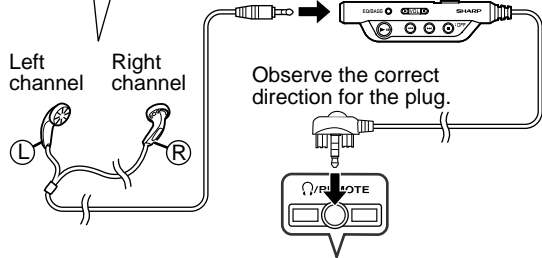
# Playing transferred audio data

**Attaching ear pads**



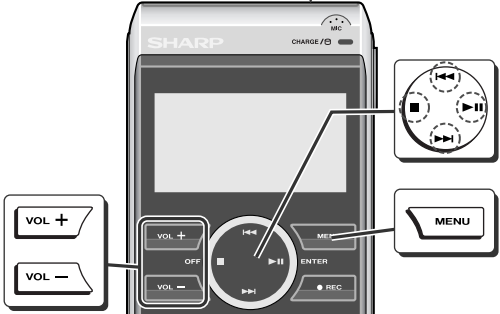
Ear pads are easy to tear.  
Handle carefully.

Pull to cover.



Left channel    Right channel

Observe the correct direction for the plug.




**VOL +**    **VOL -**

**OFF**    **ENTER**    **REC**

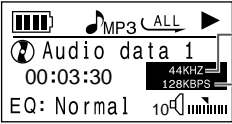
**MENU**

- 1** Turn on the unit (see page 8).
- 2** Use the **◀◀** or **▶▶** button to select a folder or audio data and press the **▶||** button.



Playback starts when audio data is selected.

- 3** Use the **◀◀** or **▶▶** button to select data to play and press the **▶||** button.
- Playback starts.






Sampling frequency

Bit rate

**To interrupt playback:**  
Press the **▶||** button.  
To resume playback, press the **▶||** button again.

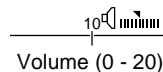
**To stop playback:**  
Press the **■** button.  
You can set the main unit to turn off automatically after a period of inactivity (see "POWERDOWN" on page 40).

**Note:**  
Audio data formats are indicated by the following icons:

MP3:     WMA:     WAV: 

## ■ Volume control

Whilst the playback window is open, use the VOL + button and VOL - button to increase and decrease the volume.



The sound escaping from your earphones may annoy people around you. In particularly crowded places (such as trains or buses), reduce the volume.

## ■ Equaliser

The unit has five preset equaliser modes and one customisable equaliser mode: Normal, ROCK, CLASSIC, JAZZ, U-BASS and USER.

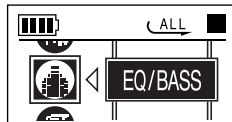
Select a mode according to a music genre or your preference.

### 1 Hold down the MENU button for 2 seconds or more.

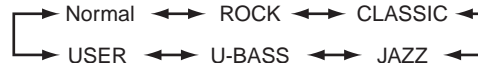
- You can also use the EQ/BASS button on the remote control.

### 2 Use the ◀ or ▶ button to select "SETUP", and press the ▶ button.

### 3 Select "EQ/BASS" in the same way as step 2.



### 4 Use the ◀ or ▶ button to select an equaliser mode.



### 5 Press the MENU button.

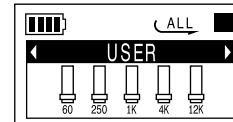
- The previous screen appears and the setting is complete.

#### Note:

Whilst the playback window is open, you can also use the EQ/BASS button on the remote control to change the equaliser mode. The mode changes with each press.

## ■ Customising "USER" mode

### 1 Select "USER" from equaliser modes (see steps 1 - 4 on the left).



### 2 Press the ▶ button.

- A cursor appears on the left side of the band (60 Hz).

### 3 Press the ◀ or ▶ button to adjust the gain level, then press the ▶ button to adjust another band.

### 4 Repeat step 3 for other settings.

### 5 Press the MENU button.

## Advanced playback



### ■ To locate the desired portion

#### For fast forward:

Press and hold down the ►► button during playback.

#### For fast reverse:

Press and hold down the ◀◀ button during playback.

#### Notes:

- Normal playback will resume when the ◀◀ or ►► button is released.
- No sound is heard during fast forward and fast reverse. See the time counter.
- Fast forward and fast reverse are not possible across data.

### ■ To locate the beginning of audio data

#### To move to the beginning of the next audio data:

Press the ►► button during playback.

#### To replay the current audio data:

Press the ◀◀ button during playback.

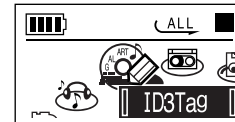
#### Notes:

- To skip some data at one time, press the ◀◀ or ►► button repeatedly until the desired audio data appears.
- Operations (skip, etc.) may not be possible whilst accessing the hard disk (indicator lights green).

### ■ Selecting audio data by information

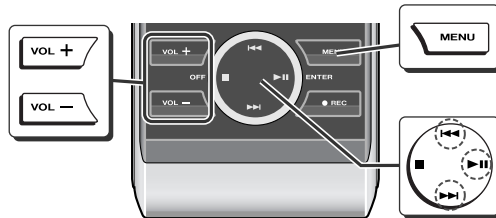
You can select audio data by title, artist name, etc. Use SHARP Music Manager to name audio data and edit other information (see page 22).

- 1 Hold down the MENU button for 2 seconds or more.**
  - You can also use the EQ/BASS button on the remote control.
- 2 Use the ◀◀ or ►► button to select "ID3Tag", and press the ►► button.**



- 3 Select one of the following parameters in the same way as step 2.**

Artist ◀→ Album ◀→ Genre ◀→ Others
- 4 Select information (title, artist name, etc.) in the same way as step 2.**
  - The corresponding audio data appears.
- 5 Use the ◀◀ or ►► button to select data to play and press the ►► button.**
  - Playback starts.



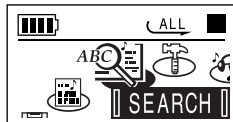
### ■ Selecting audio data by name

Audio data can be searched by name.

#### 1 Hold down the MENU button for 2 seconds or more.

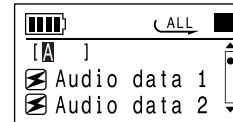
- You can also use the EQ/BASS button on the remote control.

#### 2 Use the <<< or >>> button to select "SEARCH", and press the >|| button.



#### 3 Using the <<<, >>>, VOL + or VOL - button, enter the first few characters of the desired data name and press the >|| button.

- >>>: Move cursor right.
- <<<: Move cursor left.
- VOL +: Scroll to the previous character.
- VOL -: Scroll to the next character.



- You can specify up to the first 3 characters.
- In the search field, you can enter only characters used in data names.

#### 4 Use the <<< or >>> button to select data to play and press the >|| button.

- >>>: Scroll down.
- <<<: Scroll up.

- Playback starts.

#### Notes:

- To cancel the operation, press the MENU button (main unit) or EQ/BASS button (remote control) for 2 seconds or more.
- This search is available only for audio data transferred from a PC (cannot be used for data recorded with the built-in microphone or LINE IN).

## Advanced playback (continued)



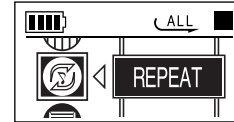
### ■ Repeat play or random play

Specify audio data to play in CLASS, and select REPEAT or RANDOM to play audio data repeatedly or in random order.

- 1** Hold down the **MENU** button for 2 seconds or more.
  - You can also use the EQ/BASS button on the remote control.
- 2** Use the **◀◀** or **▶▶** button to select "SETUP", and press the **▶||** button.



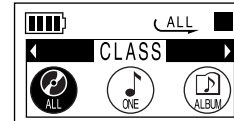
- 3** Select "REPEAT" in the same way as step 2.



- 4** Select "CLASS" in the same way as step 2.
- 5** Use the **◀◀** or **▶▶** button to select one of the following parameters, and press the **MENU** button.

- ALL\*:** Play back all audio data on the main unit.  
**ONE:** Play back only the selected audio data.  
**(Single)**  
**ALBUM:** Play back all audio data in a folder containing your choice.

(\* ) indicates default setting.

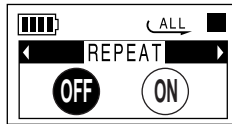


- The previous screen appears and the setting is complete.

**6** Select "REPEAT" or "RANDOM" in the same way as steps 4 and 5.

**REPEAT:**

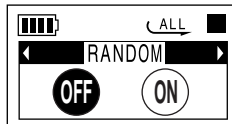
- OFF\*:** Normal playback
- ON:** Repeat play



(Repeat play is off)

**RANDOM:**

- OFF\*:** Normal playback
- ON:** Random play



(Random play is off)

(\*) indicates default setting.

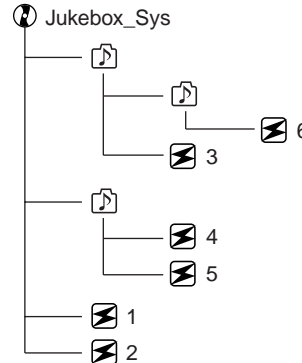
**7** Press the MENU button three times.

**8** Start playback (see page 23).

- Playback starts in the selected play mode.

**Notes:**

- In random play, the unit selects and plays data automatically. After playing all the data once, the unit stops automatically.
- Repeat play continues until the ■ (stop) button is pressed.
- For normal operation cancel repeat play.
- When "ALL" is selected, playback starts from upper folders.



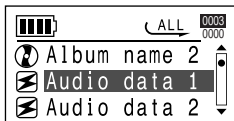
(Numbers indicate a playback order.)

## Advanced playback (continued)

### ■ Adding bookmarks to audio data

You can add bookmarks to your favourite audio data.  
You can play favourite audio data by adding bookmarks.

- 1 Press the **◀◀** or **▶▶** button in the stop mode, and select audio data to add a bookmark to.



- 2 Hold down the **▶||** button for 2 seconds or more until the "BMK" appears on the left side of the selected audio data (also possible in the playback mode).



- Go back to step 1 to add another bookmark.

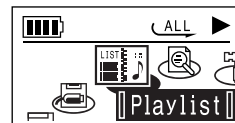
#### Note:

To delete a bookmark, select audio data with a bookmark, and press the **▶||** button for 2 seconds or more.

### ■ To listen to the audio data in a playlist or audio data with bookmarks

You can play bookmarked data or audio data in a playlist.  
For details on playlist, see page 19.

- 1 Hold down the **MENU** button for 2 seconds or more.
  - You can also use the EQ/BASS button on the remote control.
- 2 Use the **◀◀** or **▶▶** button to select "Playlist", and press the **▶||** button.



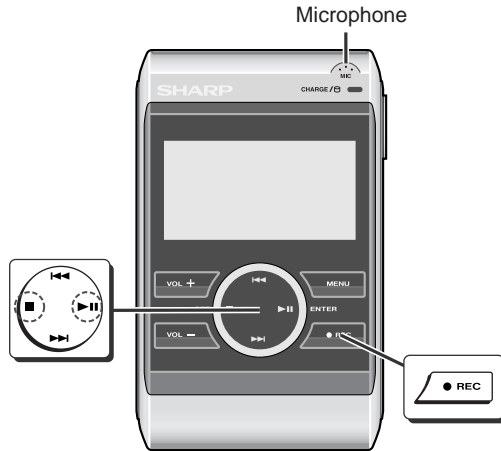
- 3 Press the **◀◀** or **▶▶** button to select a playlist or "BMK List", then press the **▶||** button.



- 4 Use the **◀◀** or **▶▶** button to select data to play and press the **▶||** button.
  - Playback starts.

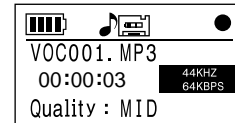


# Recording with the built-in microphone



You can record voice data with the built-in microphone.

- 1 Turn on the unit (see page 8).
- 2 Hold down the ● REC button for 2 seconds or more.
  - Recording starts.



### To interrupt recording:

Press the ►|| button.

To resume recording, press the ►|| button again.

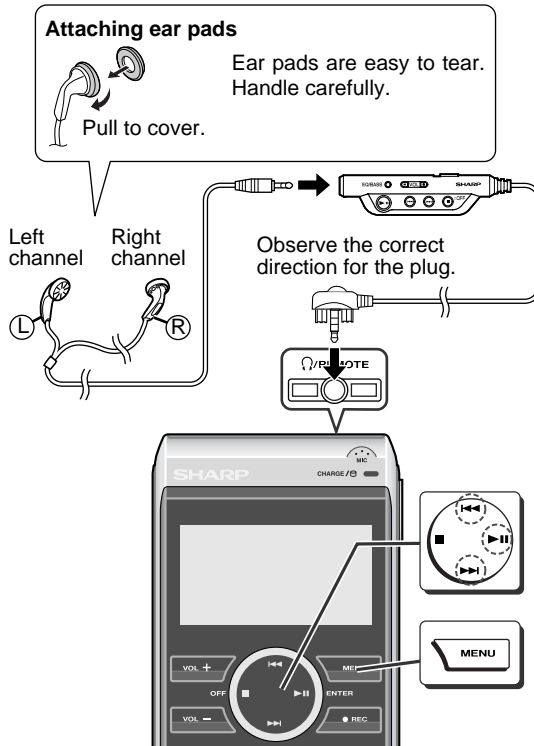
### To stop recording:

Press the ■ button.

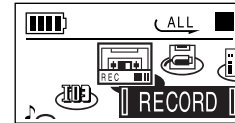
### Notes:

- You can change the recording quality (see page 40).
- Whilst recording with the built-in microphone, data is written to the hard disk at regular intervals (about every 30 minutes at 64 kbps, and every 15 minutes at 128 kbps). Mechanical sound is recorded each time.

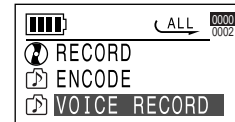
# Playing recorded voice data



- 1** Turn on the unit (see page 8).
- 2** Hold down the MENU button for 2 seconds or more.
  - You can also use the EQ/BASS button on the remote control.
- 3** Use the ◀◀ or ▶▶ button to select "RECORD", and press the ▶|| button.



- 4** Select "VOICE RECORD" in the same way as step 3.



- 5** Use the ◀◀ or ▶▶ button to select data to play and press the ▶|| button.
  - Playback starts.
  - Adjust the volume and select a favourite equaliser (see page 24).



■ **To interrupt playback**

Press the **▶||** button.  
To resume playback, press the **▶||** button again.

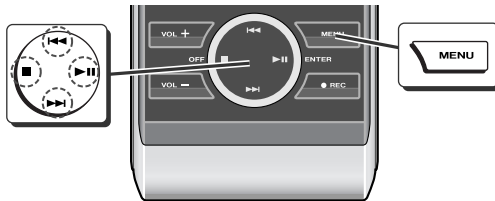
■ **To stop playback**

Press the **■** button.  
You can set the main unit to turn off automatically after a period of inactivity (see "POWERDOWN" on page 40).

For further operations, see "Transferring from PC".

	<b>Page</b>
<b>To locate the desired portion</b> .....	<b>25</b>
<b>To locate the beginning of voice data</b> .....	<b>25</b>
(Refer to the procedure for audio data.)	
<b>Repeat play or Random play</b> .....	<b>27, 28</b>

## Advanced playback



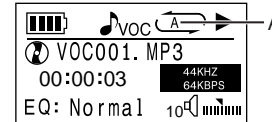
### ■ A - B repeat play

You can play voice data repeatedly by specifying start and end points.

- 1** Set "REPEAT" (steps 1 - 3, page 27).
- 2** Use the ◀◀ or ▶▶ button to select "REPEAT A-B", and press the ▶|| button.
- 3** Use the ◀◀ or ▶▶ button to select "ON".
  - OFF\*: Normal playback
  - ON: A - B repeat play.
  - (\* indicates default setting).
- 4** Press the MENU button three times.
  - You can also use the EQ/BASS button on the remote control.
- 5** Play the voice data (steps 3 - 5, page 31).

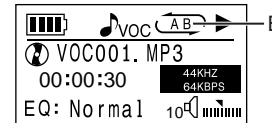
### **6** Press the ▶|| button.

- The start point (A) is created.



### **7** Press the ▶|| button again to enter the end point (B).

- A - B repeat plays from the start point (A) to the end point (B).



#### To normal playback:

Press the ▶|| button.

#### To stop A - B repeat play:

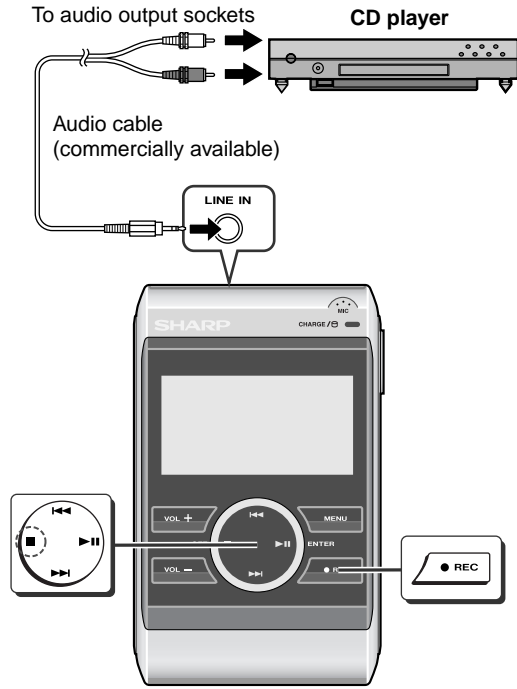
Press the ■ button.

- The A - B repeat play setting remains even after playback.
- To resume A - B repeat play, start playback and proceed to step 6.

#### Note:

If "REPEAT A-B" is set to "ON", voice data playback cannot be paused.

# Recording from a CD player



## ■ Playback sound-actuated recording

Music from CDs is recorded as MP3 files. The unit starts recording when a signal from LINE IN socket is detected (Synchronised recording).

- 1 Connect a CD player to the main unit.
- 2 Turn on the unit (see page 8).
- 3 Hold down the ● REC button for 2 seconds or more.



## 4 Begin playback on the CD player.

- Recording will begin automatically.
- To interrupt recording:**
- When the CD player is stopped, the music data number increases by one and the unit will enter the synchro recording pause mode. When playback is resumed, recording will also resume.
  - If a silence lasts for 2 seconds or more, the music data number increases by one and recording will be paused (number does not increase for approximately 5 seconds after recording starts). When the unit receives sound again, recording automatically starts.
  - A new music data is created when recording resumes.

## To stop recording:

Press the ■ button.

## Notes:

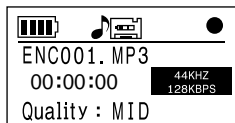
- To cancel synchro recording, see page 40.
- You can change the recording quality (see page 40).

Recording from CD  
-Recording from a CD player-

### ■ To start recording from the desired point

You can make recordings manually if you cancel the settings of synchro recording (see page 40).

- 1 Connect a CD player to the main unit.
- 2 Turn on the unit (see page 8).
- 3 Cancel the settings of synchro recording (see page 40).
- 4 Begin playback on the CD player.
- 5 At the point you want to record, hold down the ● REC button for 2 seconds or more.
  - Recording starts.



### To interrupt recording:

Press the ►|| button.

- To resume recording, press the ►|| button again.
- A new music data is created when recording resumes.

### To stop recording:

Press the ■ button.

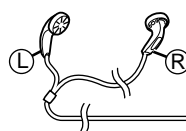
## Playing recorded music data

### Attaching ear pads

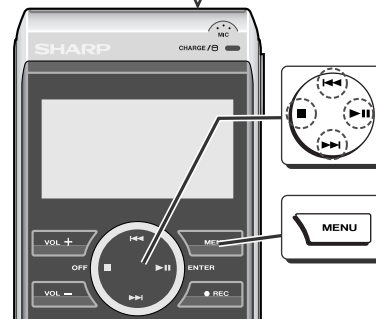


Ear pads are easy to tear.  
Handle carefully.

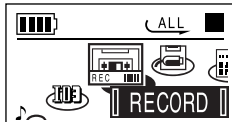
Left channel    Right channel



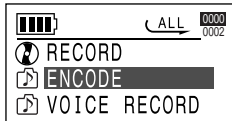
Observe the correct  
direction for the plug.



- 1** Turn on the unit (see page 8).
- 2** Hold down the MENU button for 2 seconds or more.
  - You can also use the EQ/BASS button on the remote control.
- 3** Use the ◀◀ or ▶▶ button to select "RECORD", and press the ▶|| button.



- 4** Select "ENCODE" in the same way as step 3.



- 5** Use the ◀◀ or ▶▶ button to select data to play and press the ▶|| button.
  - Playback starts.
  - Adjust the volume and select a favourite equaliser (see page 24).

#### ■ To interrupt playback

Press the ▶|| button.  
To resume playback, press the ▶|| button again.

#### ■ To stop playback

Press the ■ button.  
You can set the main unit to turn off automatically after a period of inactivity (see "POWERDOWN" on page 40).

For further operations, see "Transferring from PC".

	Page
To locate the desired portion .....	25
To locate the beginning of music data .....	25
(Refer to the procedure for audio data.)	
Repeat play or Random play .....	27, 28

## Transferring image data from a digital camera

Connect a digital camera to the main unit to save image data.

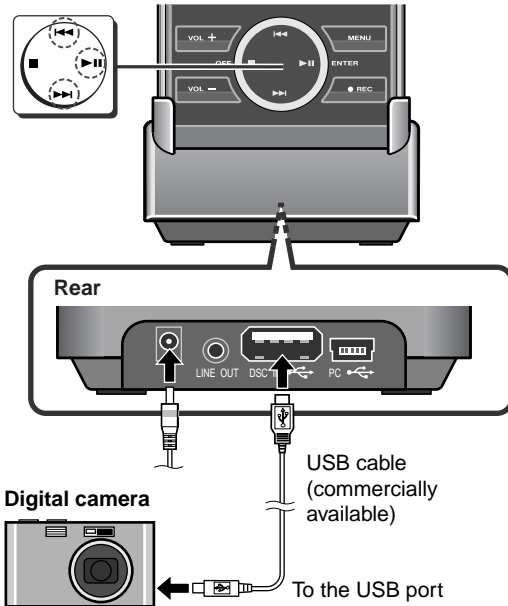


Image data can only be directly transferred when using the USB Mass Storage Class Bulk-Only Transport (BOT) recommended by Microsoft.

- 1 Turn on the unit (see page 8).
- 2 If connected, disconnect the USB connection cable from the cradle.
- 3 Connect the AC adaptor to the DC IN 5V socket and place the unit on the cradle (see page 7).
- 4 Connect the USB cable of the digital camera into the USB socket (A type).
- 5 Turn on the digital camera.

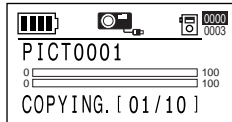


- 6 Use the ◀◀ or ▶▶ button (scroll up/down) and the ▶| button (enter the directory) to browse the content of the flash card.





- 7** Move the Reverse Highlight Box to the image data or the directory you want to save to this unit.
- 8** Press the ►|| button for 2 seconds or more. This unit will start saving the selected directory/file.



- 9** Unplug the USB cable when finished.

**Caution:**

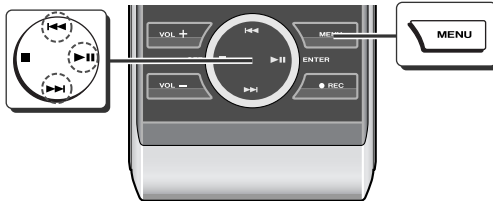
- It is recommended to use the AC adaptor when transferring data from a digital camera. Otherwise data on the unit may be corrupted when batteries run out.
- Do not disconnect the USB cable or remove the unit from the cradle whilst transferring data from a digital camera. Otherwise data on the unit may be corrupted.

**Notes:**

- Use the unit as data storage (you cannot display images). To view images, retransfer data to the digital camera or copy to a PC.
- The operation buttons on the main unit do not work if it is connected to a PC. Disconnect the PC to operate on the unit (see page 14).
- All transferred image data is stored in "USBDATA" directory. This unit automatically creates the directory name for each transfer (DATA0001 - DATA9999). You can connect this unit to a PC to edit the image data.

## Changing default settings

You can change the default settings of playback, recording, etc.

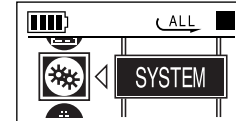


- 1** Hold down the **MENU** button for 2 seconds or more.
  - You can also use the EQ/BASS button on the remote control.
- 2** Use the **◀◀** or **▶▶** button to select "SETUP", and press the **▶||** button.



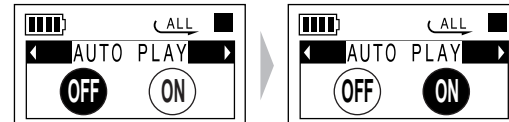
- 3** Select a menu in the same way as step 2.

- Example: "SYSTEM" is selected



- 4** Change the setting item in the same way as step 2.

- Example: "AUTO PLAY" is selected



- 5** Press the **MENU** button.

- The setting is complete.

### Note:

Whilst selecting an item, the MENU button lets you to return to the previous screen. Change other settings if necessary.

MENU	SETTING ITEM	
SYSTEM	AUTO PLAY	OFF* ON
	POWERDOWN	OFF* 10 - 100
	SYNCHRONOUS	OFF ON*
	ENCODER	64 - 320 (128*)
	VOICE	32 - 128 (64*)
	INITIALIZE	NO* YES
	INFORMATION	—
DISPLAY	CONTRAST	0 - 10 (9*)
	BACKLIGHT	OFF 5 - 20 (10*) ALWAYS
	SCROLL SPEED	1 - 16*
	TIME	NORMAL* REVERSE
	LANGUAGE	See page 41.
REPEAT	See pages 27 - 28 or 33.	
EQ/BASS	See page 24.	

(\*) indicates default setting.

## ■ SYSTEM

### AUTO PLAY:

The unit plays the last played audio data automatically. Auto play is disabled once you connect and disconnect the unit from a PC.

### POWERDOWN:

The unit automatically turns off after the set time of inactivity (10 - 100 minutes).

### SYNCHRONOUS:

The unit starts recording when a signal from LINE IN socket is detected, and saves recordings as MP3 files when signals break. You do not need to press the ● REC and ■ button repeatedly to record each track on the CD.

### ENCODER:

Adjust the recording quality. The higher the bit rate, the better the quality of recordings.

### VOICE:

Adjust the voice recording quality.

### INITIALIZE:

Restore all settings to the default.

### INFORMATION:

Check the firmware version, total hard disk capacity (shown in percent) and the total number of data.

## ■ DISPLAY

### CONTRAST:

Adjust the display panel contrast.

### BACKLIGHT:

OFF: Backlight remains off.

5 - 20: Backlight is illuminated for the set time (5 - 20 seconds).

ALWAYS: Backlight remains on.

### SCROLL SPEED:

Set the speed to scroll data names which are too long to display.

### TIME:

During playback, the elapsed time appears by default. Change to "REVERSE" to see the remaining time.

### LANGUAGE:

Select a language to display the data name or the audio data information.

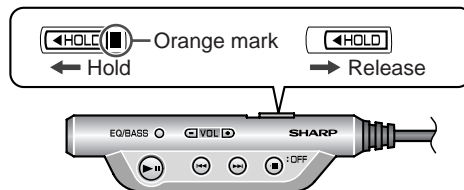
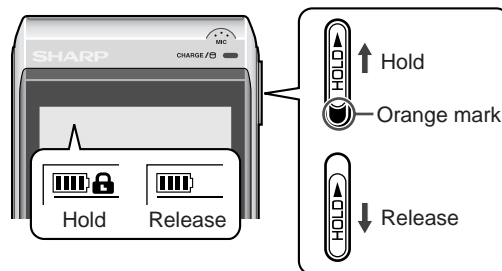
English*	Romanian
French	Spanish
Germany	Swedish
Hungarian	Chinness_Trad.
Italian	Croatian
Norwegian	Czech
Polish	Danish
Portuguese	Dutch

(\*) indicates default setting.

## Hold function

The operation can be kept even if other buttons are accidentally pressed in a place such as a crowded train. Use either the unit or remote control to activate the hold function.

Move the HOLD switch to the safety position (direction indicated by the arrow).

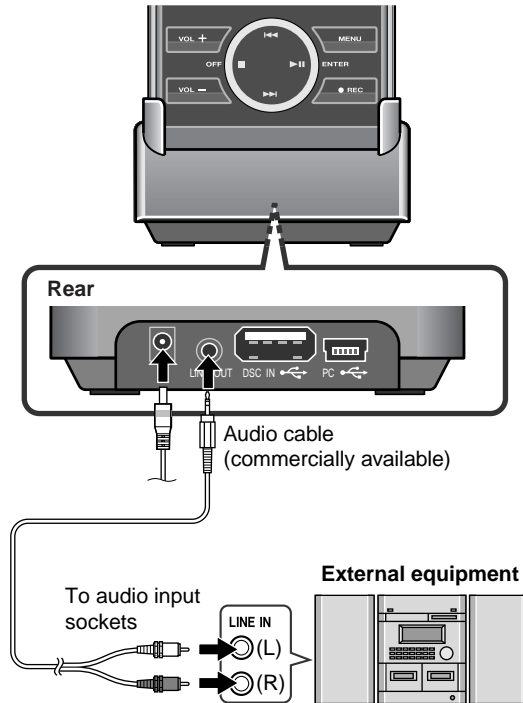


If the hold function is active whilst the power is turned off, the power cannot be turned on by mistake and the battery will not be drained.

# Listening to sound using the external equipment

HR-GB201

You can connect the unit to external equipment to play recorded data through the speakers.



- 1 Turn on the unit (see page 8).
- 2 If connected, disconnect the USB connection cable from the cradle.
- 3 Connect the LINE OUT socket of the cradle to external equipment via an audio cable (commercially available).
- 4 Connect the AC adaptor to the DC IN 5V socket and place the unit on the cradle (see page 7).
- 5 Start playback (see pages 23, 31 and 36).

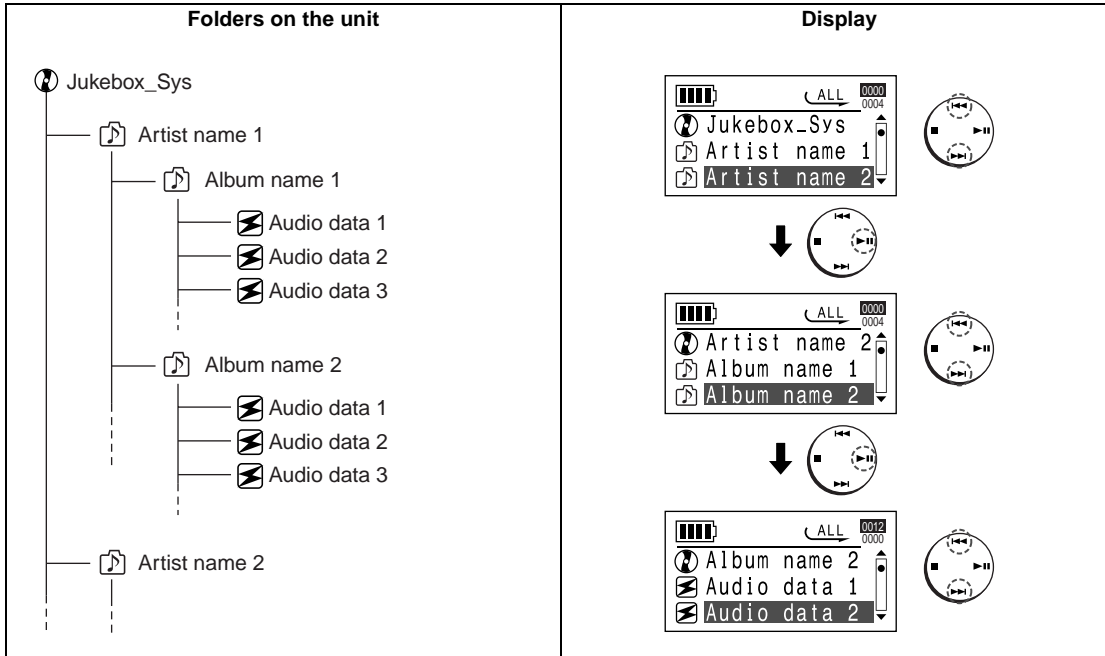
## Notes:

- The operation buttons on the main unit do not work if it is connected to a PC. Disconnect the PC to operate on the unit (see page 14).
- The LINE OUT output is coupled with the sound volume of this unit. Adjust the volume on the unit and then on the external equipment.

**Advanced Features**  
-Listening to sound using the external equipment-

# Folder structure

This unit can record approx. 5,000 songs (MP3 files encoded at 128 kbps, 4 minutes per data). The following is a recommended folder structure to access the desired audio data quickly.



# Error messages

## ■ SHARP Music Manager

ERROR MESSAGES	MEANING
<b>You cannot transfer the selected file(s) (It is copy protected)</b>	When attempting to copy files from "Jukebox_Sys" folder to the local hard drive.
<b>The format of the playlist is incorrect</b>	When the format of the playlist is incorrect.
<b>You cannot add audio data from other drives.</b>	When adding audio data from another drive to the playlist.
<b>You cannot save a playlist to other drive</b>	When trying to save the playlist to another drive.
<b>You cannot manipulate the selected item on this drive</b>	You tried to use audio data in the "Jukebox_Sys" folder by right-click.
<b>You cannot manipulate the selected file(s) (It is copy protected)</b>	You tried to copy or cut audio data in the "Jukebox_Sys" folder.

# Troubleshooting

Many potential "problems" can be resolved by the owner without calling a service technician. If something seems to be wrong with this product, check the following before calling your authorised SHARP dealer or service centre.

**The unit does not turn on.**

- Is the AC adaptor disconnected?
- Is the built-in battery exhausted?
- Is the unit in the hold mode?
- Is the ►|| button pressed for 2 seconds or more?
- Has condensation formed inside the unit?
- Is the unit being influenced by mechanical shock or by static electricity?

**No sound is heard from the earphones.**

- Is the volume set too low?
- Are the earphones plugged in?

**When the operation buttons are pressed, the unit does not respond.**

- Is there data playable on the unit?
- Is the unit in the hold mode?
- Is the remote control in the hold mode?
- Is the built-in battery exhausted?
- Is the earphones plug inserted firmly?
- Is the unit connected to a PC?
- Press the ■ button for 10 seconds or more to turn off the unit and then turn it on.

**Some sounds are skipped.**

- Is the built-in battery exhausted?
- Is the unit being subjected to excessive vibration?

## Troubleshooting (continued)

**The battery charge indicator does not light even after charging.**

- Is the AC adaptor properly connected?
- Is temperature extremely high or low?

**Voice recording is not possible.**

- Is the unit connected with LINE IN socket.
- Is the unit in the hold mode?

**Music recording is not possible.**

- Is the audio cable well inserted into the LINE IN socket of the unit?

**The battery runs out faster.**

- The built-in battery is dead. You need to replace it (see page 8).

**The operation is unstable whilst the PC and the unit are connected.**

- Are you using the USB cable that was purchased separately?

**Windows 98 Second Edition does not recognise the unit as a portable hard drive.**

- Is the USB mass storage driver (on the setup CD-ROM) installed?

**The unit does not play 12 hours although it is specified in the operation manual.**

- 12 hours of playback is based on MP3 files encoded at a bit rate of 128 kbps. Power consumption is minimised under this condition since the unit accesses the hard disk only once every 28 minutes. Higher bit rate increases the access and power consumption leading to less playback time.

**In audio data information playback mode, I cannot find a specific song which can be found under file browsing mode.**

- The SHARP Music Manager will build the audio data information database right after the audio data are transferred into the unit. If you stop transferring in before the completion of file transferring, the SHARP Music Manager won't build the audio data information database which is required under audio data information playback mode. Please click "Update Music Info" icon to recreate the database.

**SHARP Music Manager does not start.**

- You cannot open two SHARP Music Manager or more at the same time.



# Maintenance

HR-GB201

## ■ Moisture condensation

When the unit has condensation inside, the disk signals cannot be read, and the unit may not function properly.

In the following cases, condensation may form inside the unit.

- Shortly after turning on a heater.
- When the unit is placed in a room where there is excessive steam or moisture.
- When the unit is moved from a cool place to a warm place.

## To remove condensation:

Leave the unit for approximately 1 hour. The condensation should evaporate and unit will work properly.

## ■ Upgrading the firmware

For possible firmware upgrades, visit our support web site at:

"<http://sharp-world.com/products/netmd/index.htm>".

You can download firmware files to your PC to upgrade this product.

## Caution:

Never format the hard disk on this product. Functions may be disabled.

## ■ Cleaning

### When the unit becomes dirty

Clean it with a soft cloth. When the unit is excessively dirty, use a soft cloth dampened in water (external surfaces only).

### Clean the plugs and the connecting sockets.

If the plugs or sockets are dirty, noise may be heard. Cleaning will prevent noise.



## Caution:

- Do not use chemicals for cleaning (petrol, paint thinner, etc.). It may damage the cabinet finish.
- Do not apply oil to the inside of the unit. It may cause malfunctions.

2-

8

10

14

30

34

38

44

# Specifications

As a part of our policy of continuous improvement, SHARP reserves the right to make design and specification changes for product improvement without prior notice. The performance specification figures indicated are nominal values of production units. There may be some deviations from these values in individual units.

<b>Power source:</b>	DC 5 V: AC adaptor (AC 100 - 240 V, 50/60 Hz, use with cradle)
<b>Power consumption:</b>	0.5 A (switching type AC adaptor)
<b>Output power:</b>	RMS: 10 mW (5 mW + 5 mW)
<b>Charging time:</b>	Approx. 4 hours (fully charged, when using the AC adaptor included with the unit)
<b>Dimensions:</b>	Width: 63.4 mm (2-1/2") Height: 19.1 mm (25/32") Depth: 105 mm (4-5/32")
<b>Weight:</b>	157 g (0.35 lbs.)
<b>Sockets:</b>	Main unit: Earphones (impedance: 32 ohms)/remote control, Audio line input Cradle: Audio line output, USB (A type), USB (mini B type), DC input
<b>Frequency response:</b>	20 - 20,000 Hz
<b>Recording method:</b>	MP3
<b>Audio format:</b>	MP3 (MPEG-1/2 Audio Layer 3), WMA (Windows Media Audio), WAV (PCM) Sampling frequency: 16 - 48 kHz *1 Bit rate: 32 - 320 kbps *1

(\*1) A combination of sampling frequency and bit rate differs depending on audio format.

<b>Recording bit rate: (audio recording)</b>	MP3 320 kbps (Quality: BEST) MP3 256 kbps (Quality: HIGH) MP3 128 kbps (Quality: MID) MP3 96 kbps (Quality: FAIR) MP3 64 kbps (Quality: LOW)
<b>Recording bit rate: (voice recording)</b>	MP3 128 kbps (Quality: BEST) MP3 96 kbps (Quality: HIGH) MP3 64 kbps (Quality: MID) MP3 48 kbps (Quality: FAIR) MP3 32 kbps (Quality: LOW)
<b>Storage media:</b>	20 GB hard disk drive (1.8 inch)
<b>Input sensitivity:</b>	2 V (recording level: 20 k ohms for "LINE IN")
<b>Output level:</b>	Earphones: 5 mW + 5 mW (maximum output level/32 ohms) Line out: 200 mV (-12 dB/10 k ohms)
<b>Battery life:</b>	Continuous recording: Approx. 4 hours Continuous play: Approx. 12 hours

- Continuous recording:  
Microphone recording at 64 kbps (earphone output 0.5 mW + 0.5 mW)  
Line-in recording at 128 kbps (earphone output 0.5 mW + 0.5 mW)
- Continuous playback:  
MP3, 128 kbps (earphone output 0.5 mW + 0.5 mW)
- The values are the standard values when the unit is used at an ambient temperature of 25°C (77°F).

## TERMS OF GUARANTEE

Subject to the terms listed below, Sharp Electronics (U.K.) Ltd. (hereinafter called "the Company") guarantee to provide for the repair of, or at its option replace this Sharp Equipment, or any component thereof, (other than batteries), which is faulty or below standard, as a result of inferior workmanship or materials.

The conditions of this guarantee are:

1. The guarantee shall only apply to defects which occur within one year from the date of purchase, provided that this equipment is sent to the repair address within this period.
2. This guarantee covers equipment intended for private domestic use only. This guarantee does not apply to equipment used in the course of a business, trade or profession.
3. The guarantee does not cover batteries.
4. This guarantee does not cover any faults or defects caused by accident, misuse, fair wear and tear, neglect, tampering with the equipment, or any attempt at adjustment or repair other than by a Service Facility appointed by Sharp.
5. In the unlikely event of a defect occurring, the product must be returned to the Company's repair centre with proof of purchase. A postage paid label and a fault report form are supplied with the product for this purpose. It is your responsibility to ensure that the packaging is adequate, and to obtain proof of posting. Further details of the repair service, which is available after the guarantee period on a chargeable basis, and additional report forms and labels can be obtained by telephoning 0870 738 0000.
6. No person has any authority to vary the terms or conditions of this guarantee.
7. This guarantee is offered as an additional benefit to the consumer's statutory rights and does not affect these rights in any way.

# SHARP

**SHARP ELECTRONICS (U.K.) LTD.**

Sharp House, Thorp Road, Newton Heath, Manchester, M40 5BE

**SHARP CORPORATION**

9JCG5230100042  
04G S YT ②

## Free Manuals Download Website

<http://myh66.com>

<http://usermanuals.us>

<http://www.somanuals.com>

<http://www.4manuals.cc>

<http://www.manual-lib.com>

<http://www.404manual.com>

<http://www.luxmanual.com>

<http://aubethermostatmanual.com>

Golf course search by state

<http://golfingnear.com>

Email search by domain

<http://emailbydomain.com>

Auto manuals search

<http://auto.somanuals.com>

TV manuals search

<http://tv.somanuals.com>