

TOOL-FREE SCREW-LESS
2 Bay 2.5 SATA HDD Mobile Rack



USER'S MANUAL
SY-MRA25033



Quick Installation Guide

Specifications

- ◎ Product name: SY-MRA25033
- ◎ OS: Windows Vista/XP/2000/98SE/ME;
Win7/8 Mac9 3 higher
- ◎ Interface: Supports SATA I/II/III
- ◎ Fits all 2.5"SATA hard disk
- ◎ Supports hot swap
- ◎ Weight :198g
- ◎ Dimensions :150.2(L)x101.2(W)x25(H)mm
- ◎ Operation Temperature : 0° ~ 55°C

Package Content

Accessories

Quantity

SY-MRA25033	1 pcs
Screw	4 pcs
Manual	1 pcs
Insulating Pad	1 pcs
key	1 pcs

Switching key

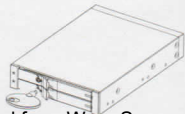
Triangular lock unlock with the key
(counter-clockwise rotated 90 degrees),

LOCK



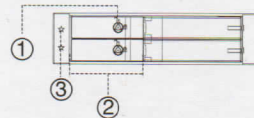
☐ : Unlock

☒ : Lock



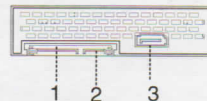
Front panel

1. Lock
2. Easy latch door
3. HDD LED indicator

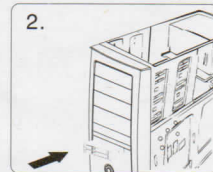
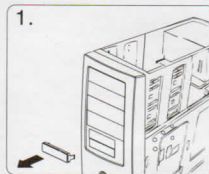


Rear panel

- 1.SATA power connector (15P)
- 2.HD2 data connector(7P)
- 3.HD1 data connector(7P)

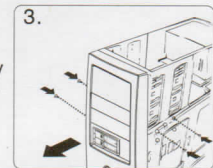


Installation



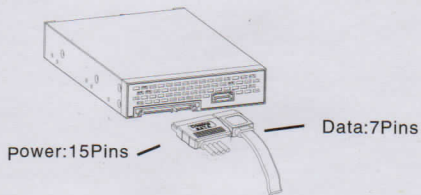
1. Remove the slot cover of an empty 3.5" floppy bay.
2. Carefully insert the SY-MRA25033 into the bay and push it inward until the SY-MRA25033's screw hole is aligned with the hole of the bay.

3. Secure the SY-MRA25033 is packed with screws, use 2 screws on each side to securely hold the device.



Connect the HDD-ROM cable

1. Please connect SY-MRA25033 15P interface by using SATA 15P power cable from Computer/Chassis.
2. Please connect SY-MRA25033 7P interfaces and Computer/Chassis/Raid controller by using SATA 7P cable.



- !** 1. Before connecting the cable with the PC or with SY-MRA25033, please check there is no object on or beside the terminals that may effect the mechanical assembly or become a possible source of an electrical short.

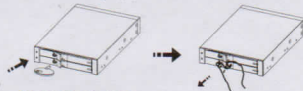
Install HDD

1. Attach the included insulating pad as shown.

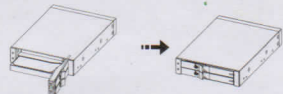


Download from [Www.Somanuals.com](http://www.Somanuals.com). All Manuals Search And Download.

2. Triangular lock unlock with the key (counter-clockwise rotated 90 degrees), open the panel;



3. Put the 2.5" HDD into the SY-MRA25033 and close the front panel.



- !** 1. After inserting HDD and closing the front door, carefully push the tray until it is seated into position. Excessive force may damage its mechanical parts.
2. If the HDD is inserted backward into the tray, forcing the device may damage the SY-MRA25033.

Eject HDD from the HDD-ROM

1. Use the key "Anti-clockwise 90°" to open the door .
2. Take the HDD out from HDD-ROM , and firmly close the front door .use the key "Clockwise 90°"to lock the door .

- !** 1. Do not eject the HDD while it is busy
2. Carefully take the HDD out from SY-MRA25033. The HDD can reach temperatures over 50°C. It will not burn the fingers but should be handled with care.

Statement

The contents of user's manual are protected under copyright law. Any organization or individual can not make copy and save it in the information bank or the retrieval system by any method or form without the authorization of SybaUSA. SybaUSA is not responsible for any loss in the process of using the HDD-ROM.

Free Manuals Download Website

<http://myh66.com>

<http://usermanuals.us>

<http://www.somanuals.com>

<http://www.4manuals.cc>

<http://www.manual-lib.com>

<http://www.404manual.com>

<http://www.luxmanual.com>

<http://aubethermostatmanual.com>

Golf course search by state

<http://golfingnear.com>

Email search by domain

<http://emailbydomain.com>

Auto manuals search

<http://auto.somanuals.com>

TV manuals search

<http://tv.somanuals.com>