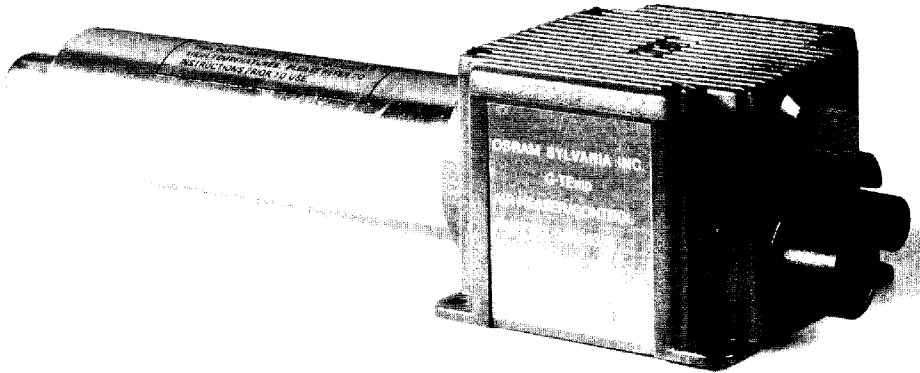


G-TEMP HEATER

065253, 066136, 070282



⇒ **FOR SAFETY AND LONG HEATER LIFE, CAREFULLY READ THIS MANUAL BEFORE USE.**

Description

- Compact, efficient heater with integrated temperature and power controller for heating air or inert gases to 1300°F (700°C). A thermal sensor in the control box turns the heater power off if airflow is lost, or the inlet air temperature is too high. A built-in airflow damper controls airflow, and control potentiometer controls temperature. If operated correctly, the heater will operate continuously for 5000 hours or longer.

Specifications

MAXIMUM INLET PRESSURE 2 PSI (.14 BAR)
MAXIMUM INLET AIR TEMPERATURE 100°F (38°C)
MAXIMUM EXIT AIR TEMPERATURE 1300°F (760°C)

MODEL NUMBER	MAXIMUM WATTAGE	SUPPLY VOLTAGE	AMP RATING	REPLACEMENT ELEMENT NUMBER
066136	1500	120 - 60 Hz	13	066137
065253	3000	230 - 60 Hz	15	065335
070282	3000	230 - 50 Hz	15	065335

Safety

- **SHOCK HAZARD** Only qualified individuals should install this heater and related controls. Follow all applicable electrical codes and use proper wiring.

OPERATING INSTRUCTIONS

8/12/00

**OSRAM
SYLVANIA**
Process Heat

- ❑ **BURN/FIRE/EXPLOSION HAZARD** Do not use with or near explosive or reactive gases. Avoid contact with the side, or exposure to the exit-end, during or soon after operation. **DO NOT USE NEAR VOLATILE OR COMBUSTIBLE MATERIALS.**

Precautions

- ❑ Use filtered air. Avoid dust, dirt, grease, oil, or oil vapors, corrosive or reactive gases which will damage heater.
- ❑ Do not open the top cover of the control box. The control box is calibrated at the factory and must not be tampered with for any reason.
- ❑ Do not exceed rated pressure of 2 PSI. Higher pressures cause air leakage and will cause heater failure. For compressed air sources, control airflow with a pressure regulator. For blower air sources, control airflow with the damper on the heater box.
- ❑ Do not exceed rated supply voltage (120, 240V depending on model). Excess voltage may cause controller damage or failure.
- ❑ **NOTE:** The heater may be installed in any position when used with continuous gas flow. However, with interrupted or pulsed airflow, and the heater is vertically mounted (pointing downward), the inlet air sensors may be activated and turn heater power off. This occurs due to the natural rising of heat from the barrel to the control box. This results in delayed start-up (2 minutes or more), and mounting in this manner is not recommended.

Installation

- Securely mount the heater to prevent movement.
- Connect the filtered air source to the heater.
- Remove the wiring box cover (two screws).
- Connect the **WHITE** wire to one **POWER** lead.
- Connect the **BLACK** wire to the other **POWER** lead.
- Connect the **GREEN** wire to **GROUND**.
- Tighten the cord clamp and replace the wiring box cover.

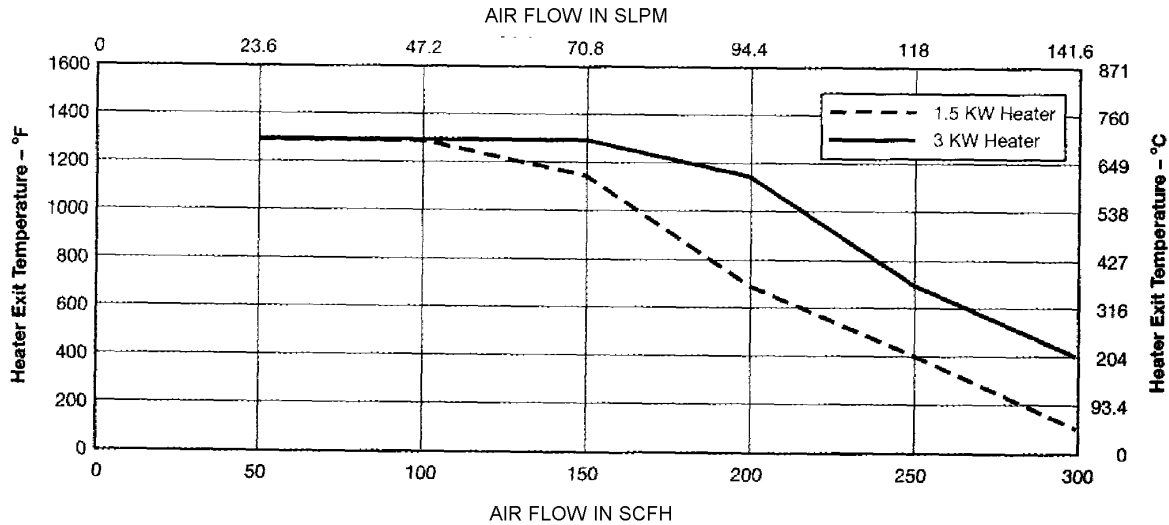
Start-up

- Turn on air supply and adjust to desired flow/pressure.
- Set the red knob to one (1).
- Switch on power to the heater.
- Adjust the red temperature control knob upward for desired temperature.

Performance Curves

The following curve shows maximum temperature vs. flow rate for the G-TEMP heaters. Temperature measurements were made with an exposed-junction type "K" thermocouple located 1" from the heater exit. Use of other temperature measuring devices, or different thermocouple positions will generate different results.

G-Temp Heater Maximum Performance



Warranty

OSRAM SYLVANIA warrants that all products to be delivered hereunder will be free from defects in material and workmanship at the time of delivery. OSRAM SYLVANIA's obligation under this warranty shall be limited to (at its option) repairing, replacing, or granting a credit at the prices invoiced at the time of shipment for any of said products. This warranty shall not apply to any such products which shall have been repaired or altered, except by OSRAM SYLVANIA, or which shall have been subjected. OSRAM SYLVANIA shall be liable under this warranty only if (A) OSRAM SYLVANIA receives notice of the alleged defect within sixty (60) days after the date of shipment; (B) the adjustment procedure hereinafter provided is followed, and (C) such products are, to OSRAM SYLVANIA's satisfaction, determined to be defective.

THE WARRANTY SET FORTH IN THE PRECEDING PARAGRAPH IS EXCLUSIVE AND IN LIEU OF ALL OTHER WARRANTIES, EXPRESS OR IMPLIED, INCLUDING, WITHOUT LIMITATION, ANY IMPLIED WARRANTY OF FITNESS FOR A PARTICULAR PURPOSE OR OF MERCHANTABILITY.

The information contained in this manual is based on data considered to be true and accurate. Reasonable precautions for accuracy has been taken in the preparation of this manual, however OSRAM SYLVANIA assumes no responsibility for any omissions or errors, nor assumes any liability for damages that may result from the use of the product in accordance with the information contained in this manual.

Please direct all warranty/repair requests or inquiries to the place of purchase, and provide the following information, in writing:

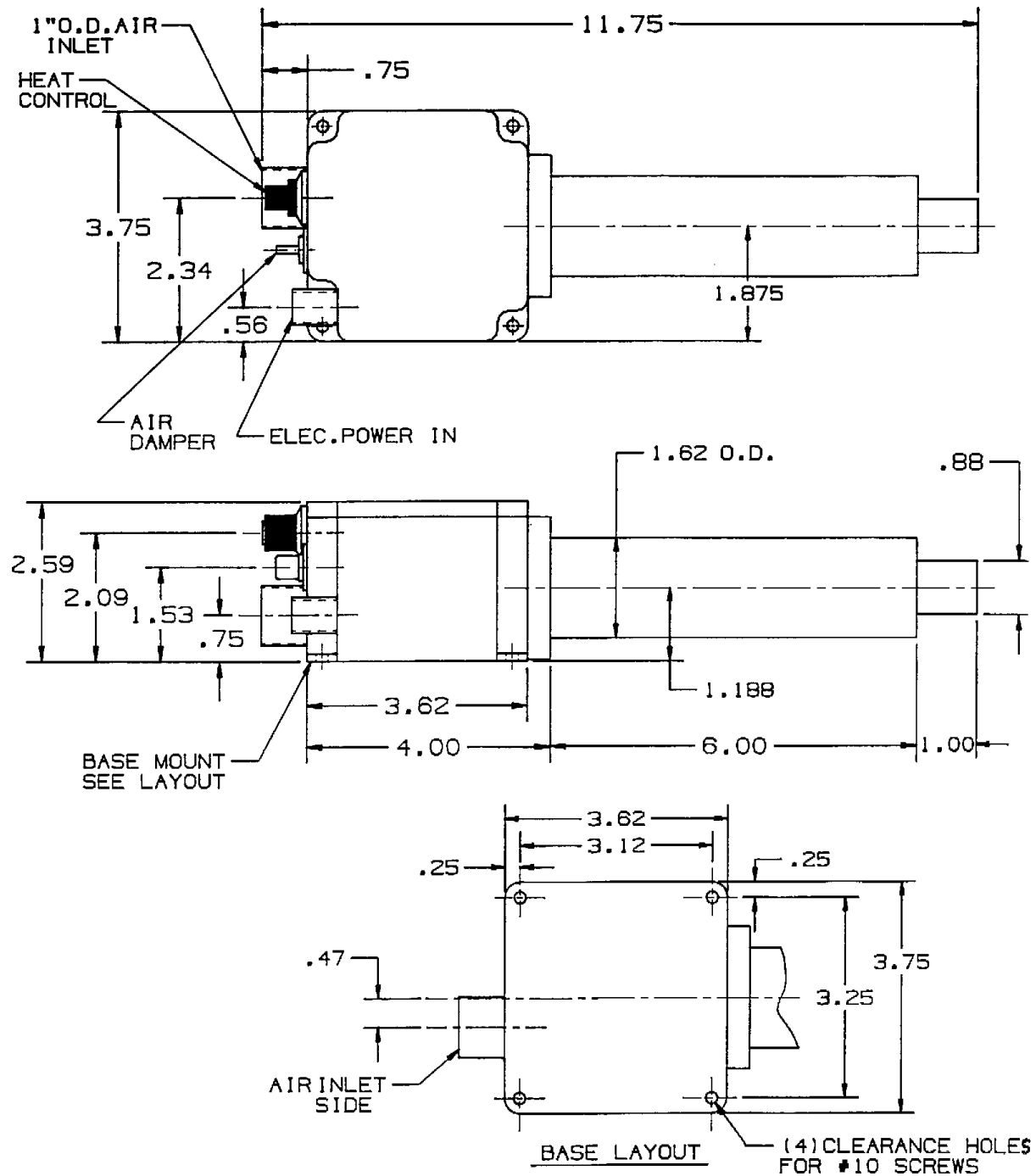
- (A) Order number under which products were shipped
- (B) Model/Serial Number of product
- (C) Reason for rejection

PRODUCTS CAN NOT BE RETURNED TO OSRAM SYLVANIA WITHOUT AUTHORIZATION. Replacement, repair, or credit for products found to be defective will be made by the place of purchase. All products found to be not defective will be returned to the Buyer; transportation charges collect or stored at Buyers expense.

OPERATING INSTRUCTIONS

8/12/00

OSRAM
SYLVANIA
Process Heat



Free Manuals Download Website

<http://myh66.com>

<http://usermanuals.us>

<http://www.somanuals.com>

<http://www.4manuals.cc>

<http://www.manual-lib.com>

<http://www.404manual.com>

<http://www.luxmanual.com>

<http://aubethermostatmanual.com>

Golf course search by state

<http://golfingnear.com>

Email search by domain

<http://emailbydomain.com>

Auto manuals search

<http://auto.somanuals.com>

TV manuals search

<http://tv.somanuals.com>