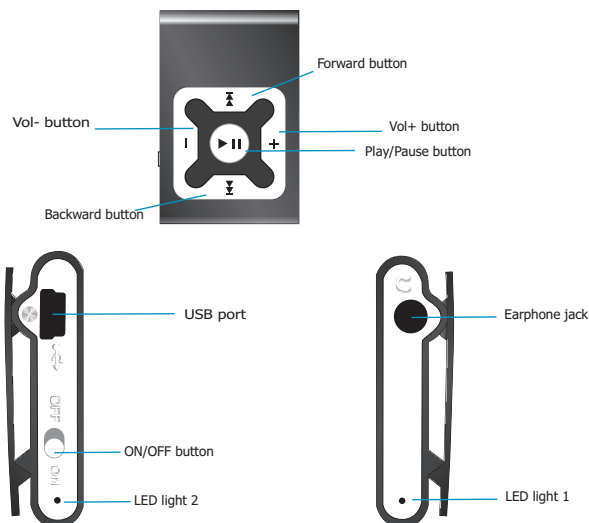


SMP2012

## User Manual



Sylvania is a registered trademark of OSRAM Sylvania Inc. Used under license.

## 2. Unique Features

1. Elegant appearance and easy to use
2. Multi-Code Player - Supporting MP1, MP2, MP3, WMA formats
- 2.3 Drive Free U Disk - You may manage your files directly through "Portable Device" in "My Computer" on Windows2000 Operating System or above without driver

## 4. Function of the button

1. Make sure the switch is ON
2. Switch on the power button and it will start to play automatically
3. Hold PLAY to turn off the player when the player is working
4. Switch on the power button to resume the song
5. Short Press PLAY to pause when file is playing
6. The LED light 1 is on when playing music

## 6. Trouble Shooting

No Power	<ul style="list-style-type: none"> <li>- Check to see if battery is low</li> <li>- Check to see if the player is ON</li> </ul>
No sound from earphone	<ul style="list-style-type: none"> <li>- Check to see Volume is set "0" and connect the earphone connects properly</li> <li>- Make sure earphone is clean and in good status</li> <li>- Damaged MP3 file may make noise and could not be played. Make sure that the music file are not damaged</li> </ul>
Failure of music download	<ul style="list-style-type: none"> <li>- Check to see if USB cable is damaged and connected properly</li> <li>- Check to see if driver is installed correctly</li> <li>- Check to see if memory space is enough</li> </ul>

## 3. Play Music

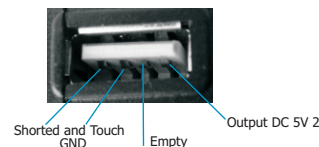
Connect the earphone to player

1. Put the Power switch to ON
  - 1.1 Select music
    - ⏮ : To select previous music
    - ⏭ : To select next music
  2. To adjust the volume
    - 2.1 Press +/- to adjust volume

## 5. USB Disk

1. USB Disk
 

The player could be use as standard USB disk with operating system of Windows 2000 and above, Mac OS 10.3 and above, Linux Redhat 8.0 and above (no driver needed) while Windows 98 need to set up driver
2. Battery
  - 2.1 Make sure the power switch is on to charge, or the player could not be charged properly. The LED light 2 and LED light 1 are on when the player is charging, the light 1 will be off when the battery is full
  - 2.2 Disconnect the player and charger if you want to stop charging
  - 2.3 Turn off the player when you do not use player
3. Remarks (Additional information for Adaptor purchase)
  - 3.1 The adaptor must be conformed to following standard
    - 3.1.1 Input: 100V - 240V, 50/60Hz
    - 3.1.2 Output: 5.2V ± 0.2V
    - 3.1.3 Max.: 350mA
    - 3.1.4 4 pins adaptor



## 7. Technical Specifications

Capacity	2GB
Display	NA
Interface	USB 2.0 High Speed
Max Playtime	Up to 4hrs
Battery Type & Capacity	Li-Polymer Rechargeable 3.7V 120mAh
File Type	Mp1, MP2, MP3, WMA
S/N ratio	85-95Db
Power Output	(L)5mW + (R)5mW(320hm)
Operating System	Compatible with Windows2000/ XP
Dimensions	44.2 x 29.5 x 12.7
Weight	18g

## Free Manuals Download Website

<http://myh66.com>

<http://usermanuals.us>

<http://www.somanuals.com>

<http://www.4manuals.cc>

<http://www.manual-lib.com>

<http://www.404manual.com>

<http://www.luxmanual.com>

<http://aubethermostatmanual.com>

Golf course search by state

<http://golfingnear.com>

Email search by domain

<http://emailbydomain.com>

Auto manuals search

<http://auto.somanuals.com>

TV manuals search

<http://tv.somanuals.com>