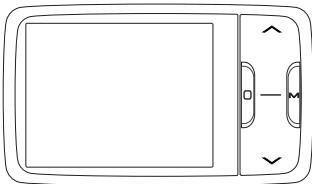


SYLVANIA

Digital MP4 Player

Your Pocket Guide

EN



SMPK2242

1

Install Software

2

Get Connected

3

Transfer Media

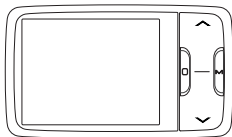
4

Plug Your Ears & Enjoy

What's in the box?	2
System Requirement	3
Software Installation	4
Connect & Charge	5
Synchronize songs to the player	6-8
Transfer	9-10
Software Operation	11-12
Settings	13
Know Your Player Well	14-15
Music Playback	16
Edit Lyrics	17
Repeat Mode	18
EQ Mode	19
Video Playback	20
Photo Browse	21-22
Ebook / File Deletion	23
Recorder	24
Technical Data	25
Trouble Shooting	26

What's in the box?

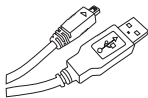
What's in the box?



Portable Media Player



Earphone

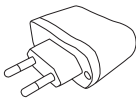


USB Cable



CD-ROM containing:

- Media player driver for Windows® 98
- Software for converting video files



Battery Charger



Your Pocket Guide

Download from www.Somanuals.com. All Manuals Search And Download.

You'll need a computer with:

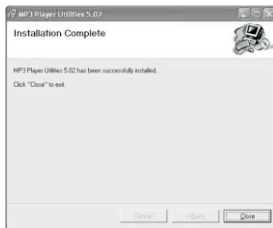


Windows® 98/2000/XP
Pentium Class or faster Processor
CD-ROM Drive
64MB RAM
30MB free hard disk space
USB Port

Software Utilities Installation

Insert the CD into the CD ROM drive of your PC.
Click **Setup.exe** to start driver installation.
Follow the on-screen-menu to complete the installation.

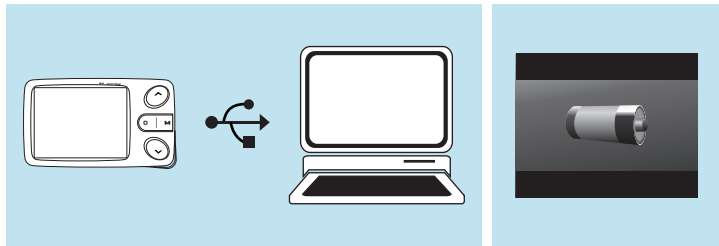
Click **Close** once you reach the **Installation Complete** screen.



For Windows® 98 users, please install the driver in the CD-ROM before downloading any files to your player.

Download from www.Somanuals.com. All Manuals Search And Download.

Connect



Your player will be charged while being connected to PC through the USB cable.

! You will see the charging animation on the display.

The player is fully charged when the charging animation stops.

Download from www.Softmanuals.com. All Manuals Search And Download.

Synchronize songs to the player

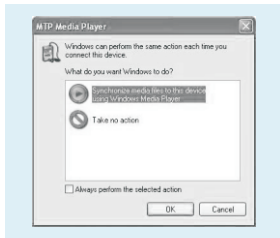
You can use Windows Media Player 10 on Windows® XP SP2 to synchronize music which are downloaded from Internet legally and validly with license to the player. If the song is downloaded illegally without license, it cannot be synchronized.



Step 1:

Connect the player to your PC by USB cable.
And press **^ / v** to select the Online Device of the player as **MTP Device**, and press **m** to confirm.

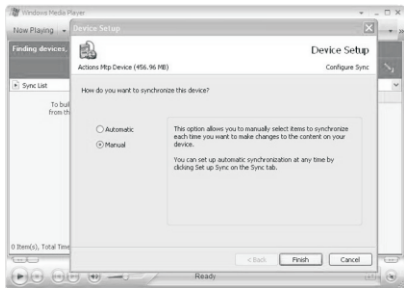
(Note: The defaulted online device is USB Disk. If you don't set the online device, a removable disk would be found.)



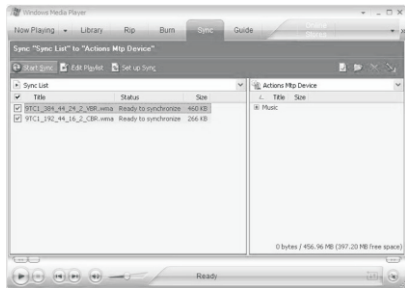
Step 2:

A dialog box will appear, choose **Synchronize media files to this device using Windows Media Player**, and click **OK** to proceed.

Synchronize songs to the player



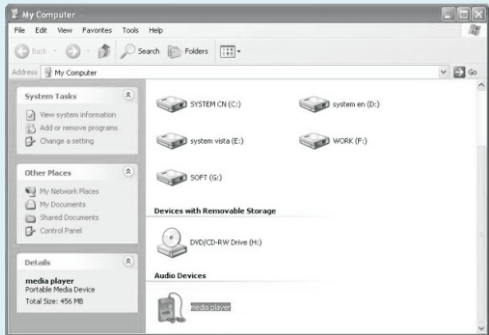
Step 3:
Windows Media Player will find device automatically.
And after a while, a dialog box of **Device Setup** will appear,
choose **Manual** and click **Finish**.



Step 4:
Windows Media Player will be operating.
Drag and drop your downloaded songs into its Sync List,
and press **Start Sync**. Then the songs will be
synchronized to the player.

Download from Www.Somanuals.com. All Manuals Search And Download.

Synchronize songs to the player



Step 5:

The synchronized music can be found in the player.

Click into **My Computer** on the desktop, and you can see an Audio Device named as **media player**, click into it to view your synchronized songs.

Step 6:

Hold  long to turn on the player, then the MTP device will be removed.

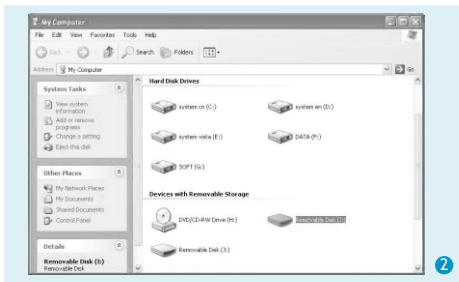
Get Your Player Connected



1

Step 1:

Plug the USB cable to the USB ports of your PC and player. Once the connection is successfully made, the removable disk of the player will be found.

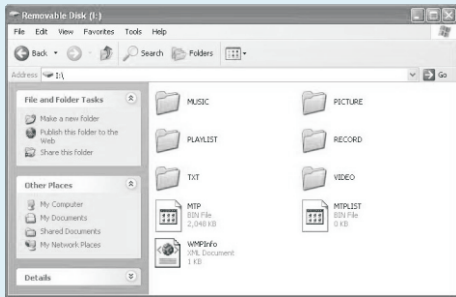


2

Step 2:

The above screen (1) would appear. (Apply only to Windows® XP) Choose **Take no action** and click **OK** to close the window.

Double click **My Computer** on your desktop and the above window (2) would appear. Look for the **Removable Disk** icon.



Step 3:

Double click the **Removable Disk** icon.

Note: Do not disconnect the USB cable once you click into the removable disk window. Such action may cause data loss or problems to the player.

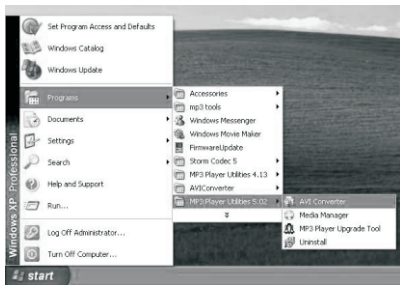
Drag and drop your media files into the removable disk.

Close the removable disk window and disconnect the player from your PC after the data transfer.

Transfer Music, Image, Movie & Ebook

Download from [Www.Somanuals.com](http://www.somanuals.com). All Manuals Search And Download.

Software Operation



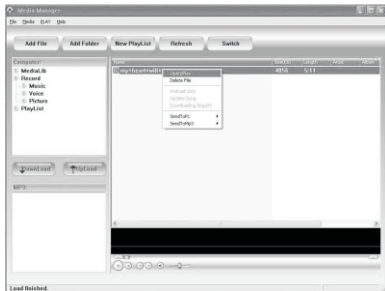
You can convert your favorite video file in any other format into the .AVI format with the help of the **AVI Converter** (Start\Programs\MP3 Player Utilities 5.02 \AVI Converter).



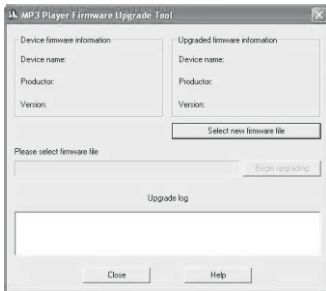
After selecting the source video file and your preferred target file path. You can press the Convert button to start it. The converted .AVI file will be played automatically after conversion via Media Player.

Download from [Www.Somanuals.com](http://www.somanuals.com). All Manuals Search And Download.

Software Operation



You can enjoy songs from both PC and your player thru the **Media Manager** ([Programs\MP3 Player Utilities 5.02\Media Manager](#)).



If the updated firmware version is available, please use **MP3 Player Firmware Upgrade Tool** to upgrade it.

Language Selection



Press **^** / **v** to select **Setting** on the main menu, and press **m** to enter its sub-menu. Press **v** to select **Language Select**, and press **m** again to the language options list.

14 languages are available:

English, Simplified Chinese, Traditional Chinese, Japanese, Korean, French, German, Italian, Spanish, Portuguese, Dutch, Swedish, Danmark, and Russian.

Press **^** / **v** to select your preferred language, and press **m** to confirm.

Setting Date & Time



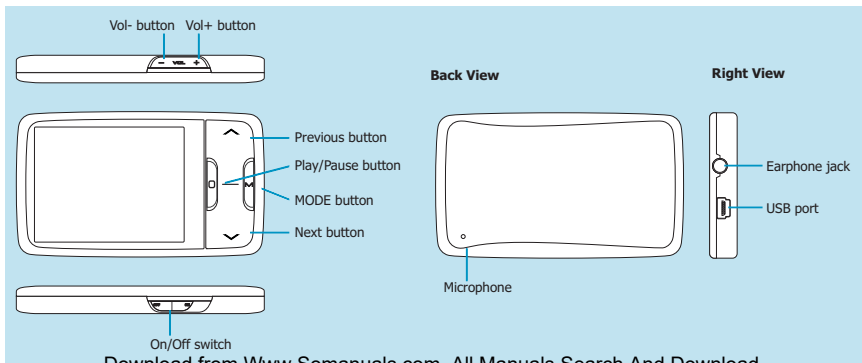
Press **^** / **v** to select **Date and Time** on the setting menu, and press **m** to confirm.





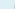
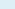






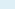




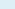





Select **Adjust Date and Time** by pressing **m**.

Then you can press **^** / **v** to move to Year / Month / Day / Hour / Minute, and press **-** / **+** to adjust them.

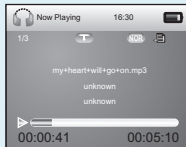
At last, press **m** to confirm your setting.

Plug Your Ears, and Enjoy

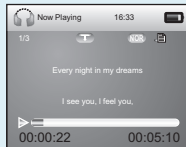


	To	Press
General	Power On/Off	Switch the On/Off switch
	Turn On/Off	Hold  long
	Scroll through lists	 
	Select Option	
	Return to previous menu	-  (just for on a menu screen)
Music	Play/Pause songs	
	Jump to next song	
	Fast Forward	Hold  long
	Move back to previous song	
	Fast Backward	Hold  long
	Display lyrics	 twice
	Stop lyrics display	
	Volume up	+
Movie	Volume down	-
	Play/Pause a movie	
	Jump to next movie	
	Fast Forward	Hold  long
	Move back to previous movie	
Images	Fast Backward	Hold  long
	Select image	
	Jump to next image	
Ebook	Jump to previous image	
	Select article	
	Scroll downwards	
	Scroll upwards	
	Quit to main menu	Hold - long

Music Playback



Press \wedge / \vee to select **My Music** on the main menu, and press \mathbf{M} to enter it. Select **All Music** and press \mathbf{M} to view the songs list. Then you can select different songs by pressing \wedge / \vee , and you can easily play the song you've chosen by a simple press of \mathbf{M} .



While enjoying music, you can press \square to pause or continue the music;

Press \wedge / \vee to move back to the previous song or jump to the next song;

Hold \wedge / \vee long to move your song forward or rewind it.

When playing music, hold MODE button to enter the Sub Menu.

When playing music, hold Vol - to return to the previous menu, hold Vol+ again to return to the main menu.

Display Lyrics

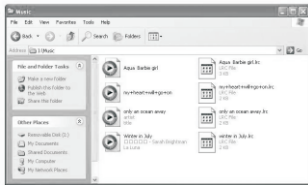
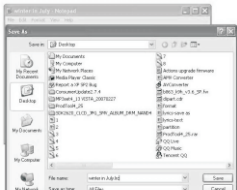
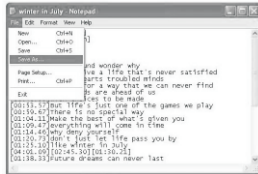
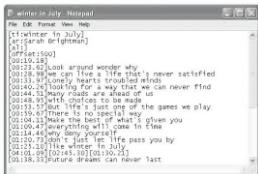
The edited lyrics will be displayed synchronously if you press \mathbf{M} twice while playing music.

You can press \mathbf{M} once again to quit the lyrics display scene.

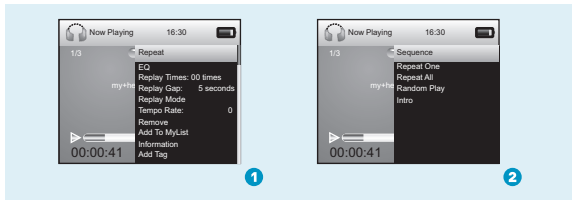
Edit Lyrics

You can copy the synchronous lyrics from internet, and create a new **Text Document** on your PC, paste them, and then select to save this document in the extension of **.LRC** shown as below.

Then put both .LRC and .MP3 (or .WMA) files of the same song into the same folder in the removable disk. Your lyrics would be shown when you play that song.



Repeat Mode



Procedure:

Hold **M** while playing music to enter the sub-menu screen (1).

Select **Repeat** and press **M** to enter the Repeat menu screen (2).

Press **^** / **v** to select your preferred repeat mode, and press **M** to confirm.

5 Repeat Modes are available:

Sequence, Repeat One, Repeat All, Random Play, Intro.

Sequence

All music files will be played one by one and stopped at the last music until you disable this function.

Repeat One

The currently played song will be played repeatedly until this function is disabled.

Repeat All

All music would be played from the beginning to the last one repeatedly until this function is disabled.

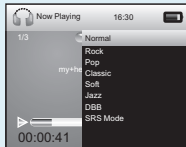
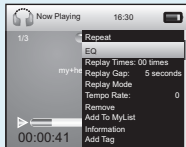
Random Play

All music would be played randomly until this function is disabled.

Intro

All music would be played for 10 seconds from the beginning until this function is disabled.

Listen to your music at its best



Procedure:

Hold **M** while playing music to enter the sub-menu screen (1).
Press **V** to select **EQ** and press **M** to enter the Equalizer menu screen (2).

If you don't feel satisfied with the 7 fixed EQ Modes:
Normal, Rock, Pop, Classic, Soft, Jazz, DBB.

You can press **V** to select **SRS Mode**, and press **M** to its sub-menu screen.

Press **V** to select **User Mode**, and press **M** to enter the User EQ Setting screen.

you can press **^ / V** to move to each item; and press **- / +** to adjust them.

At last, press **M** to confirm your setting and get back to the previous menu.

Download from Www.Somanuals.com. All Manuals Search And Download.

Video Playback

Press \wedge / \vee to select **My Video** on the main menu, and press M to enter it. Select **Dir List** by pressing M . Choose **Local Memory**, and press M to enter the video files list. Press \wedge / \vee to select different movies, and press M to play.



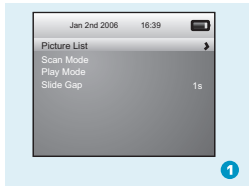
While enjoying video, you can press \square to pause or continue the movie, and press \wedge / \vee to move back to the previous movie or jump to the next one. You can move your movie forward or rewind it while playing by holding \wedge / \vee long.

If you want to adjust the volume, please press $-$ / $+$.

When playing the video, Hold Vol - button long to back to the Previous Menu, hold Vol- again to return to the Main Menu.

Download from [Www.Somanuals.com](http://www.somanuals.com). All Manuals Search And Download.

Photo Browse



Press \wedge / \vee to select **My Picture** on the main menu, and press \blacksquare to confirm. Select **Picture List** by pressing \blacksquare . Press \vee to **Dir List**, and press \blacksquare to enter it. Choose **Local Memory**. The pictures list will be shown after you press \blacksquare .

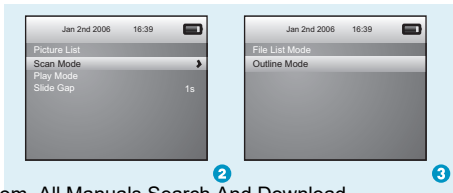
Then you can press \wedge / \vee to select a picture, and press \blacksquare to play it.

While playing a picture, you can press \wedge / \vee to play the previous or next picture, too.

When browsing photos, press Vol- button to get back to previous Menu, hold Vol- again to return to the Main menu.

Photos Preview

Press \wedge / \vee to select **Scan Mode** on the sub-menu of My Picture, and press \blacksquare to enter its options list. Press \vee to choose **Outline Mode**, and press \blacksquare to confirm you setting. Then you can preview all the pictures after you select to enter the pictures list.



SlideShow



If you want to create a slideshow for all photos, you can press \wedge / \vee to select **Play Mode** on the sub-menu of My Picture, and press \mathfrak{M} to enter its options list.

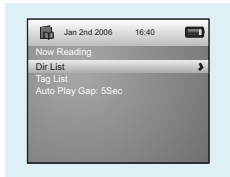
Press \vee to choose **Slide Play**, and press \mathfrak{M} to confirm. Then the pictures could be played one by one automatically according to the Slide Gap you preset.

Slide Gap Setting:

Press \wedge / \vee to select **Slide Gap** on the sub-menu of My Picture.

You can press $-$ / $+$ to adjust the time setting of slide gap between two pictures.

Ebook



Press \wedge / \vee to select **My Ebook** on the main menu, and press m to enter it.
Press \vee to **Dir List**, and press m to enter it.
Choose **Local Memory**. The ebooks in the extension of .TXT will be listed after you press m .

Deleting Files

Hold Mode button to enter the Sub Menu, then press Previous/Next to select "Remove". Select "Yes" to delete the file.

Download from www.Somanuals.com. All Manuals Search And Download.

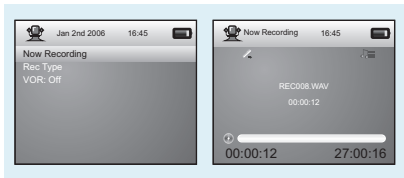


Auto Play Setting

While reading an article, you can press m to choose **Manual Mode** or **Auto Mode**. If you choose **Auto Mode**, the article will be scrolled automatically according to the Auto Play Gap you preset.

Press \wedge / \vee to select **Auto Play Gap** on the sub-menu of Ebook. You can press $-$ / $+$ to adjust the time setting of auto play gap.

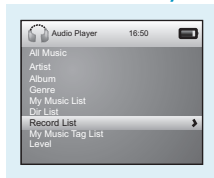
Voice Recording



Press \wedge / \vee to select **Recorder** on the main menu, and press \mathbf{M} to enter it.
 Select **Now Recording**, and press \mathbf{M} to start it.
 You can press \mathbf{M} to save the recorded voice.

To preset the format of the recorded voice file, you could select to go into **Rec Type** on the sub-menu of Recorder.
 Hold Vol - button to return to Main Menu.

Voice Playback



If you want to play the recorded file, you can press \wedge / \vee to select **My Music** on the main menu, and press \mathbf{M} to enter it.

Press \vee to select **Record List**, and the recorded voice files will be listed after you press \mathbf{M} .
 You can press \wedge / \vee to select one, and press \mathbf{M} to start playing.

When playing the recorded audio file, Hold Vol - button to return to the Previous Menu, hold Vol- again to return to the Main Menu.

Technical Data

General Information

Capacity	128MB/256MB/512MB/1GB/2GB/4GB internal flash memory
Display	2.4 inch Colour TFT display
Power Supply	3.7V Lithium battery
Operating System	Windows® 98/2000/XP
Interface	USB 2.0 High Speed
Dimensions	50mm x 84mm x 10mm
Weight	39.5g

Voice Recording

Supported File Types	.ACT and .MP3 files
----------------------	---------------------

Video Playback

Supported File Type	.AVI files (Resolution 320 x 240)
---------------------	-----------------------------------

Audio Playback

Compression Formats	.MP3 (8kbps ~ 320kbps), .WMA (5kbps ~ 384kbps) for music at Constant Bit Rate
S/N ratio	85dB
THN+D	<0.6
Crosstalk	>50dB
Earphone Output Power	9mWx, 32ohm

Photo Browse

Supported File Types	.JPG, .BMP and .GIF for photo files
Viewing Mode	Manual Browse, Slideshow

Ebook

Supported File Type	.TXT files
Viewing Mode	Manual Mode, Auto Mode

What should I do if...

Q: I cannot enter the MUSIC mode after using the player for a period of time.

A: You should format the memory of the player under connection to PC.

(Be sure you remember to backup the data in your player before performing the above action.)

Q: I cannot convert my video file into the .AVI format.

A: Please make sure that the media player software for video files has been installed on your PC. Then try to convert again.

Disposal of your old product

Electrical and electronic equipment (EEE) contains materials, parts and substances which can be dangerous to the environment and harmful to human health if wastes of electrical and electronic equipment (WEEE) are not disposed correctly.

Equipments which are marked with the WEEE logo (as shown on the right), should not be thrown away with your household waste. Contact your local Authority Waste Disposal Department as they will be able to provide details of the recycling options available in your area.



Specifications are subject to change without notice.
No part of this document may be reproduced or transmitted
in any form or by any mean, electronic or mechanical,
including photocopying and recording
or translated to another language for any purpose
without the prior written consent of the manufacturer.
All brand names, logos and registered trademarks mentioned
are property of their respective owners.



M03AC2135DR
Version1.0

Download from www.Somanuals.com. All Manuals Search And Download.

Printed in China

2022 © GENY MIDDLE EAST FZC. All Right Reserved.

Free Manuals Download Website

<http://myh66.com>

<http://usermanuals.us>

<http://www.somanuals.com>

<http://www.4manuals.cc>

<http://www.manual-lib.com>

<http://www.404manual.com>

<http://www.luxmanual.com>

<http://aubethermostatmanual.com>

Golf course search by state

<http://golfingnear.com>

Email search by domain

<http://emailbydomain.com>

Auto manuals search

<http://auto.somanuals.com>

TV manuals search

<http://tv.somanuals.com>