

# SYLVANIA

SMPK2312

Note:



Electrical and electronic equipment ( EEE ) contains materials, parts and substances which can be dangerous to the environment and harmful to human health if waste of electrical and electronic equipment ( WEEE ) is not disposed of correctly.

Equipments which are marked with the WEEE logo (as shown on the left ), should not be thrown away with your household waste. Contact your Local Authority Waste Disposal Department as they will be able to provide details of the recycling options available in your area.

Download from [www.Somanuals.com](http://www.Somanuals.com). All Manuals Search And Download.

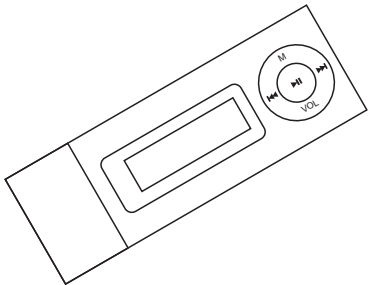
Sylvania is a registered trademark of OSRAM Sylvania Inc. Used under license.



Digital Audio Player

# Your Pocket Guide

EN



**1**

Get Connected

**2**

Transfer Music

**3**

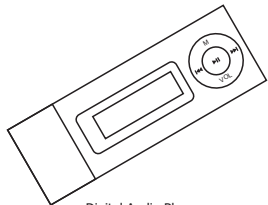
Plug Your Ears & Enjoy

Download from [www.Somanuals.com](http://www.Somanuals.com). All Manuals Search And Download.

What's in the box?	2
System Requirement	3
Transfer	4
Know Your Player Well	5 - 6
Music Playback	7
Edit Lyrics	8
Repeat Mode	9
Record & Voice Playback	10
System Settings	11
Function Overview	12
Trouble Shooting	13

What's in the box?

# What's in the box?



Digital Audio Player



Earphone



Your Pocket Guide

# You'll need a computer with:

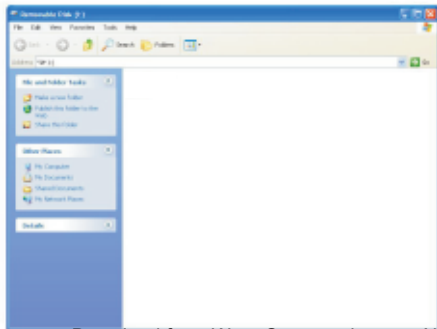


Windows® 98/2000/XP/Vista  
Pentium Class or faster Processor  
CD-ROM Drive  
64MB RAM  
30MB free hard disk space  
USB Port

For Windows® 98 users, please install the driver in the CD-ROM before downloading any files to your player.

Download from [www.Somanuals.com](http://www.Somanuals.com). All Manuals Search And Download.

## Get Your Player Connected & Transfer

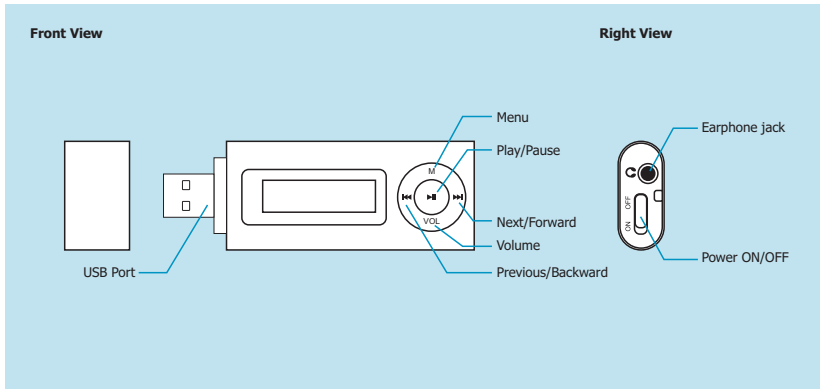


### Step 1:

Plug this player to the USB port of your PC. Once the connection is successfully made, the **Removable Disk** window would pop up. Try re-connecting the player if it doesn't appear.

### Step 2:

Drag and drop your audio files into the removable disk. You can create any folder or directory in the removable disk. Close the removable disk window and disconnect the player from your PC after the data transfer.



Download from [Www.Somanuals.com](http://www.Somanuals.com). All Manuals Search And Download.

# Buttons Operation

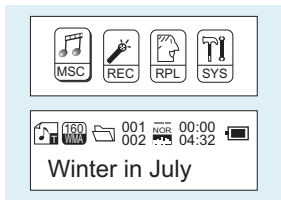
	To	Press
General	Turn On/Off	Hold the Play/Pause button
	Select option	M
Music	Play/Pause songs	Play/Pause
	Jump to next song	Push the M button rightwards▶▶
	Fast forward	Hold the M button rightwards hold the▶▶  button
	Move back to previous song	Push the M button leftwards ◀◀
	Fast backward	Hold the M button leftwards hold the ◀◀ button
	Volume up	Press VOL button and then press▶▶  for volume up
	Volume down	Press VOL button and then press ◀◀ for volume down

Have the player hold / unhold:

If you want to have your player locked while enjoying music, you can slide the HOLD switch, then all operations on buttons will be invalid. And you can unlock your player by switching it back.

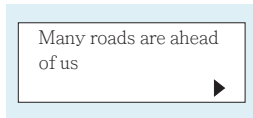


## Music Playback





Power on the player and navigate to the Music function. Use the Forward or Previous buttons to choose the song and press the Play button. Press the Volume button and use the Forward and Rewind buttons to adjust the volume.

## Display Lyrics



This player supports "\*.LRC" lyric files to support song lyrics display during music play.

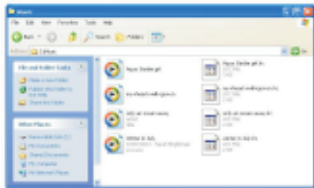
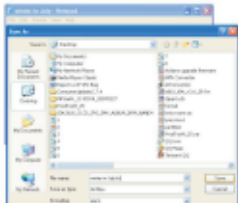
The music file and lyric file must have the same name and be in the music folder. The only difference in the name will be the extension (ie: ".mp3" will be the extension for the song and ".lrc" will be the extension for the song lyric file.)

If the song has lyrics to match during play mode, the icon in the top left corner of the display screen will change from  to . Hold **M** button for 2 seconds when play music. The lyric will

## Edit Lyrics






You can copy the synchronous lyrics from Internet, and create a new **Text Document** on your PC, paste them, and then select to save this document in the extension of **.LRC** shown as below.

Then put both **.LRC** and **.MP3** (or **.WMA**) files of the same song into the same folder in the removable disk. Your lyrics would be shown when you play that song.




# Repeat Mode


## REPEAT

	NORMAL	Play the music in regular order
	Repeat One	Play one single song repeatedly
	Folder	Play all music in folder
	Repeat Folder	Play all music in folder repeatedly
	Repeat All	Play all music repeatedly

## SHUFFLE

	Random	Play the music in current folder randomly
---	--------	---

## INTRO

	Intro	Play the first 10 seconds of all music in current folder
---	-------	--

## Equalizer

Choose between 7 various equalizer settings: Normal, Rock, Pop, Classic, Soft, Jazz, DBB

## Tempo Rate

During music play, you can increase the tempo or decrease the tempo.

## Replay

With this function, you can set to replay a certain portion of a song. When in the replay mode, set the A point and B point in which you require to be repeated.

The player will repeat the portion of a song between point A and B.

### Voice Recording



Select **REC** on the Main Menu. Then press the **M** button to enter the Voice Recording Mode. You can press the Play/Pause button to start recording, and save the recorded voice by holding the **M** button.










### Voice Playback



Select **RPL** on the Main Menu. To select a recorded voice file, and then press the Play/Pause button to start voice playing. If you want to delete the selected voice file, you can press the **M** button to enter the sub-menu. Push the **M** button to select "**Delete file**". Press **◀** and **▶** to select the song to be deleted.

# System Setting

Press and hold the M button to enter the main menu. Navigate to System Setting and press the M button to enter.

	Record time	Display and adjust the time and date
	Backlight time	Adjust the length of time (in seconds) the backlight will remain
	Backlight color	Adjust the backlight colour
	Language	Set the player to different languages (English, French, etc)
	Power off	Set the auto off and sleep timer
	Contrast	Contrast settings
	Memory info	Remaining memory status
	Firmware version	Show the firmware version of the player
	Firmware upgrade	Firmware upgrade
	Exit	Exit System Settings mode

# Function Overview

- 2GB memory capacity
- MP3 / WMA Player
- Works as a memory storage device (USB flash drive)
- 7 EQ modes: Normal, Rock, Pop, Classic, Soft, Jazz, DBB
- 7 various backlight colors to choose from
- Various play modes: Normal, Repeat 1, Folder, Repeat Folders, Repeat All, Random, Intro
- Sleep mode and power-saving mode
- Rechargeable battery

## What should I do if ...

Q: I cannot put any file into the removable disk for the first usage, it prompts that the disk is full.

A: You can format the disk at first, then put files into it again.

Q: I've put the audio files into the player, but when I select to play music, it still prompts "Empty Disk".

A: Maybe the battery is of low power. You may replace it with a new battery, and try playing music again.

Q: I cannot enter the MUSIC mode after using the player for a period of time.

A: You should format the memory of the player under connection to PC.

(Be sure you remember to backup the data in your player before performing the above action.)

## Disposal of your old product

Electrical and electronic equipment (EEE) contains materials, parts and substances which can be dangerous to the environment and harmful to human health if wastes of electrical and electronic equipment (WEEE) are not disposed correctly.

Equipments which are marked with the WEEE logo (as shown on the right), should not be thrown away with your household waste. Contact your local Authority Waste Disposal Department as they will be able to provide details of the recycling options available in your area.





Specifications are subject to change without notice.  
No part of this document may be reproduced or transmitted  
in any form or by any mean, electronic or mechanical,  
including photocopying and recording  
or translated to another language for any purpose.



## Free Manuals Download Website

<http://myh66.com>

<http://usermanuals.us>

<http://www.somanuals.com>

<http://www.4manuals.cc>

<http://www.manual-lib.com>

<http://www.404manual.com>

<http://www.luxmanual.com>

<http://aubethermostatmanual.com>

Golf course search by state

<http://golfingnear.com>

Email search by domain

<http://emailbydomain.com>

Auto manuals search

<http://auto.somanuals.com>

TV manuals search

<http://tv.somanuals.com>