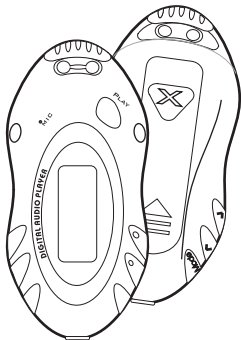


SYLVANIA

Digital Audio Player

Your Pocket Guide

EN



1

Get Connected

2

Transfer Music

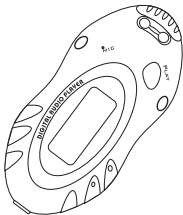
3

Plug Your Ears & Enjoy

What's in the blister?	2
System Requirement	3
Synchronize songs to the player	4 - 5
How to use the player as a USB disk	6 - 10
Know Your Player Well	11 - 13
Music Playback	14
Edit Lyrics	15
EQ Mode & Repeat Mode	16
Record & Voice Playback	17
Settings	18 - 19
Technical Data	20
Trouble Shooting	21

What's in the box?

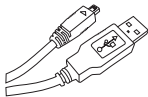
What's in the blister?



Digital Audio Player



Earphone



USB Cable



CD-ROM containing:
Media player driver for
Windows® 98SE



1 x AAA 1.5V Battery



Your Pocket Guide

You'll need a computer with:

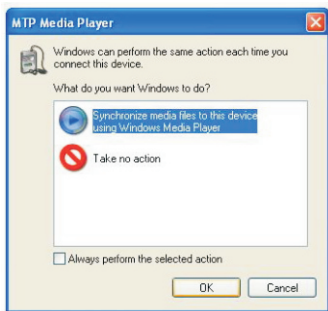


Windows® 98SE/ME/2000/XP
Pentium Class or faster Processor
CD-ROM Drive
64MB RAM
30MB free hard disk space
USB Port

For Windows® 98SE users, please install the driver in the CD-ROM before downloading any files to your player.

Download from www.Somanuals.com. All Manuals Search And Download.

Synchronize songs to the player

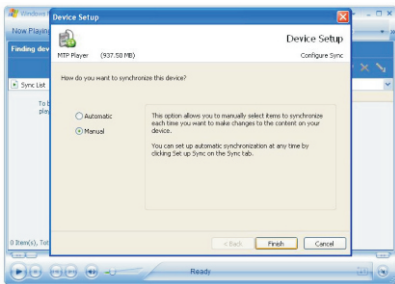


You can use Windows Media Player 10 on Windows® XP SP2 to synchronize music which are downloaded from Internet legally and validly with license to the player. If the song is downloaded illegally without license, it cannot be synchronized.

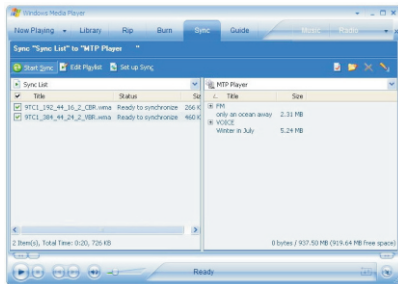
Step 1:

Connect the player to your PC by USB cable. A dialog box will appear, choose **Synchronize media files to this device using Windows Media Player**, and click **OK** to proceed.

Synchronize songs to the player



Step 2:
Windows Media Player will find device automatically.
And after a while, a dialog box of **Device Setup** will appear, choose **Manual** and click **Finish**.

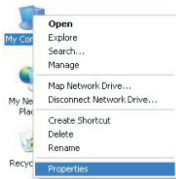


Step 3:
Windows Media Player will be operating.
Drag and drop your downloaded songs into its Sync List, and press **Start Sync**. Then the songs will be synchronized to the player.

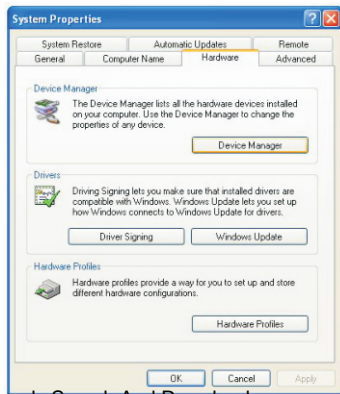
Download from Www.Somanuals.com. All Manuals Search And Download.

How to use the player as a USB disk

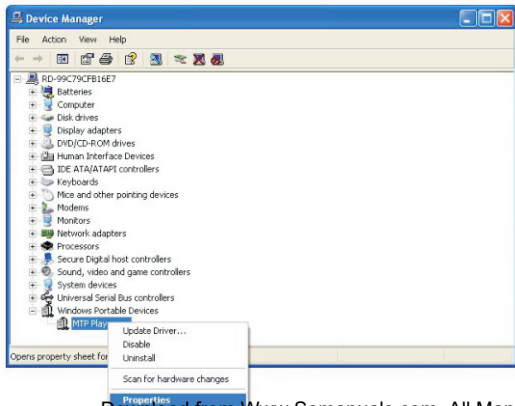
Step 1:
Right click **My Computer** on the desktop,
and click **Properties**.



Step 2:
The window screen of **System Properties** will be shown.
Click **Hardware** on the menu bar, and then click
Device Manager.



How to use the player as a USB disk



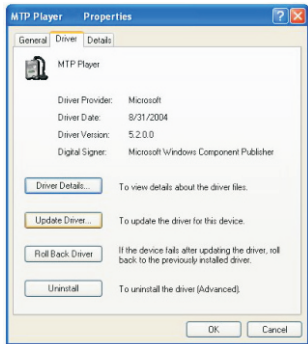
Step 3:

The window screen of **Device Manager** will be shown.

Double click **Windows Portable Devices** to see the **MTP Player**.

Then right click **MTP Player** and click **Properties**.

How to use the player as a USB disk



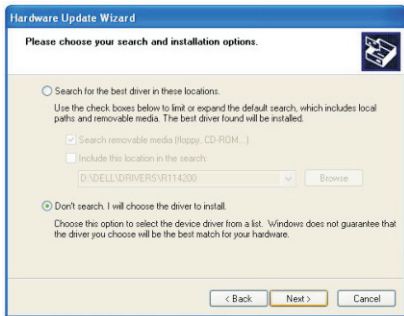
Step 4:
The window screen of **MTP Player Properties** will be shown.
Click **Driver** on the menu bar, and then click **Update Driver**.



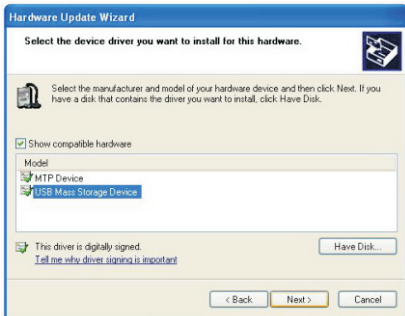
Step 5:
You will see the screen of **Hardware Update Wizard**, choose **Install from a list or specific location(Advanced)**, and click **Next** to continue.

Download from [Www.Somanuals.com](http://www.somanuals.com). All Manuals Search And Download.

How to use the player as a USB disk



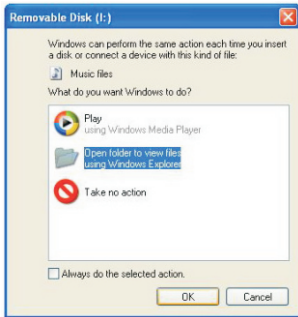
Step 6:
Choose **Don't search. I will choose the driver to install.**
and click **Next** to continue.



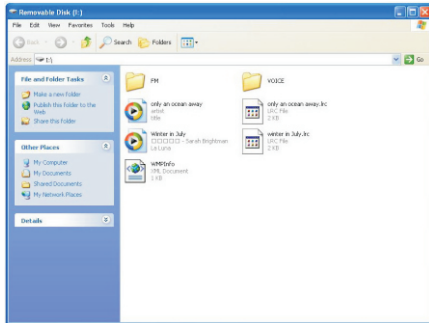
Step 7:
Choose **USB Mass Storage Device**, and click **Next** to go into
the **Completing the Hardware Update Wizard** screen, and click
Finish.

Download from [Www.Somanuals.com](http://www.Somanuals.com). All Manuals Search And Download.

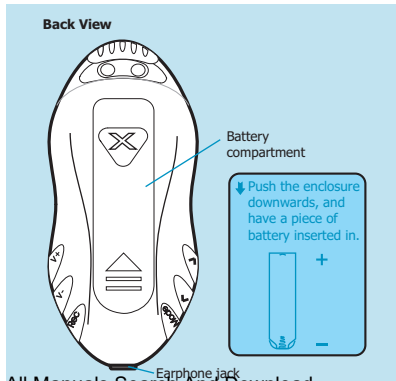
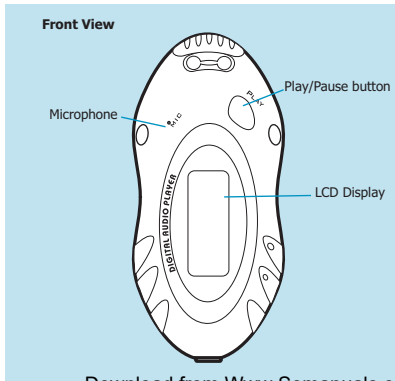
How to use the player as a USB disk



Step 8:
The **Removable Disk** window would pop up.
Select **Open folder to view files using Windows Explorer**, and click **OK**.

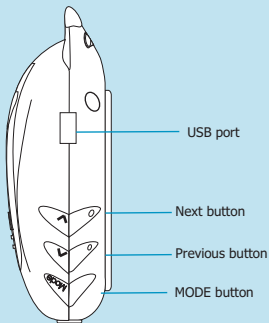


Step 9:
Drag and drop your audio files into the removable disk.
You can create any folder or directory in the removable disk.
Close the removable disk window and disconnect the player from your PC after the data transfer.

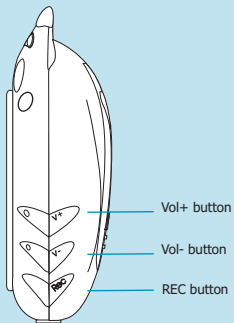


Know Your Player Well

Left View



Right View



Buttons Operation

	To	Press
General	Turn On/Off	Hold the Play/Pause button
	Scroll through lists	Previous / Next buttons
	Select option	MODE button
	Return to Main Menu	Hold the MODE button
	Start recording	Rec button
	Save the recorded file	Hold the Play/Pause button
Music	Play/Pause songs	Play/Pause button
	Jump to next song	Next button
	Fast forward	Hold the Next button
	Move back to previous song	Previous button
	Fast backward	Hold the Previous button
	Display lyrics	Hold the MODE button for 2 seconds
	Stop lyrics display	REC button
	Volume up	Vol+ button
Volume down	Vol- button	

Have the player locked / unlocked:

If you want to have your player locked while enjoying music, you can hold the REC button long, then all operations on buttons will be invalid. And you can unlock your player by holding it long again.

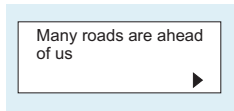
Music Playback



Select **MSC** on the main menu and press the MODE button to enter the music mode, then you can select different songs by pressing the Previous / Next buttons, and press the Play/Pause button to start playing the song you select.

While enjoying music, you can press the Play/Pause button to pause or continue the music; Press the Previous / Next buttons to move back to the previous song or jump to the next song; Hold the Previous / Next buttons to move your song forward or rewind it. If you want to adjust the volume, please press the Vol- / Vol+ buttons .

Display Lyrics

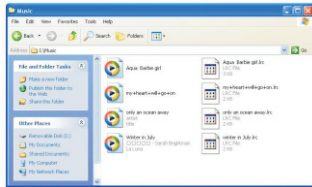
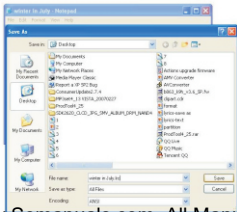
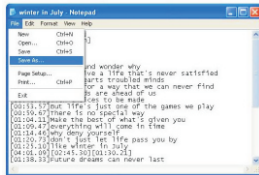
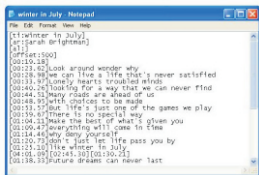


The edited lyrics will be displayed synchronously if you hold the MODE button for 2 seconds while playing music. And you can press the MODE button to quit the lyrics display screen.

Edit Lyrics

You can copy the synchronous lyrics from internet, and create a new **Text Document** on your PC, paste them, and then select to save this document in the extension of **.LRC** shown as below.

Then put both **.LRC** and **.MP3** (or **.WMA**) files of the same song into the same folder in the removable disk. Your lyrics will be shown automatically when you play that song.



EQ Mode & Repeat Mode

Repeat Mode

Procedure:

While playing music, press the MODE button to enter the selection menu screen. Choose **Repeat** and press the MODE button again to enter the **Repeat** menu screen.

You can press the Previous / Next buttons to select your desired repeat mode, and press the MODE button to confirm your setting.

EQ Mode

Procedure:

While playing music, press the MODE button to enter the selection menu screen. Press the Next button to select **Equalizer**, and press the MODE button to enter the **Equalizer** menu screen.

You can press the Previous / Next buttons to select your desired EQ mode, and press the MODE button to confirm your setting.

7 Repeat Modes are available:

Normal, Repeat One, Folder, Repeat Folder, Repeat All, Random, Intro.

Normal

All music files will be played one by one and stopped at the last music until you disable this function.

Repeat One

The currently played song will be played repeatedly until this function is disabled.

Folder

All music in the selected folder would be played once until this function is disabled.

Repeat Folder

All music in the selected folder would be played from the beginning to the last one repeatedly until this function is disabled.

Repeat All

All music would be played from the beginning to the last one repeatedly until this function is disabled.

Random

All music would be played randomly until this function is disabled.

Intro

All music would be played for 10 seconds from the beginning until this function is disabled.

7 EQ Modes are available: Natural, Rock, Pop, Classic, Soft, Jazz, DBB.

Voice Recording



Press the Previous / Next buttons to select **REC** on the Main Menu. Then press the PLAY button to start recording. You can finish recording by pressing the MODE button again.

You can have a quick access to the Voice Recording Mode: In the STOP mode, press the REC button to enter the Voice Playback Mode, then press the REC button again to enter the Voice Recording Mode and start recording.



Voice Playback (RPL)

Press the Previous / Next buttons to select **RPL** on the Main Menu. Then press the MODE button to enter the Voice Playback Mode. You can press the Previous / Next buttons to select a recorded voice file, and then press the Play/Pause button to start voice playing.

If you want to delete a recorded voice file, you can press the **MODE** button to enter its sub-menu. Press the Next buttons to select **Delete file**, and press the MODE button to confirm. Then a dialog box of **"Delete file"** will be show. Press the Previous / Next buttons to choose **Yes**, and press the MODE button to confirm to delete it.

Setting Language

Step 1:

Press the Next buttons to select **SYS** on the Main Menu, then press the MODE button to enter its sub-menu.

Step 2:

Press the Next button to select **Language**, then press the MODE button to confirm.

Step 3:

You can select your preferred language by pressing the Previous / Next buttons, and then press the MODE button to confirm your setting.

12 languages are available:

Simple Chinese	Portuguese
English	Dutch
Trad Chinese	Polish
Japanese	
Korean	
French	
Italian	
German	
Spanish	



Setting Clock

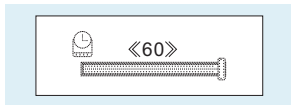
Step 1: Select **Record Time** on the sub-menu of **SYS**, and press the MODE button to enter the clock setting screen.

Step 2: You can press Vol- / Vol+ buttons to move among Year : Month : Day : Hour : Minute : Second. And press the Previous / Next buttons to adjust them.

Step 3: At last, press the MODE button to confirm your setting.

After finishing system settings, press the Next button to look for **Exit** on the sub-menu of **SYS**, and then press the MODE button to quit the SYS screen.

Auto-Power Off Setup



Step 1:

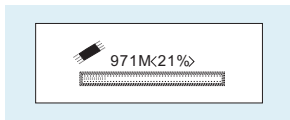
Press the Next button to select **Power off** on the sub-menu of **SYS**, and press the MODE button to enter its sub-menu. Select **Off time**, and press the MODE button to confirm.

Step 2:

You can adjust the off time by pressing the Previous / Next buttons, and then press the MODE button to confirm your setting.

In the IDLE mode (no button is pressed), the player will be turned off automatically based on the duration you set. You may set it as "0" to disable this function.

Checking Memory Status



Press the Next button to select **Memory info.** on the sub-menu of **SYS**, and press the MODE button to confirm.

Then the used memory status can be shown.

General Information

Power Supply	1 x AAA 1.5V Battery
Dimensions	36.2mm x 79mm x 25.6mm
Weight	26g
Display	LCD with 7-color backlight
Capacity	128MB/256MB/512MB/1GB/2GB/4GB internal flash memory
Operating System	Windows® 98SE/ME/2000/XP
Interface	USB 2.0 Full Speed

Audio Playback

Compression Formats	.MP3 (8kbps ~ 320kbps) .WMA (5kbps ~ 384kbps)
S/N ratio	85dB
Earphone Output Power	9mWx, 32ohm
THD+N	<0.6
Crosstalk	>50dB

Voice Recording

Supported File Type	.ACT and .WAV files
---------------------	---------------------

What should I do if...

Q: I cannot enter the MUSIC mode after using the player for a period of time.

A: You should format the memory of the player under connection to PC.

(Be sure you remember to backup the data in your player before performing the above action.)

Disposal of your old product

Electrical and electronic equipment (EEE) contains materials, parts and substances which can be dangerous to the environment and harmful to human health if wastes of electrical and electronic equipment (WEEE) are not disposed correctly.

Equipments which are marked with the WEEE logo (as shown on the right), should not be thrown away with your household waste. Contact your local Authority Waste Disposal Department as they will be able to provide details of the recycling options available in your area.



Specifications are subject to change without notice.
No part of this document may be reproduced or transmitted
in any form or by any mean, electronic or mechanical,
including photocopying and recording
or translated to another language for any purpose
without the prior written consent of the manufacturer.
All brand names, logos and registered trademarks mentioned
are property of their respective owners.



Free Manuals Download Website

<http://myh66.com>

<http://usermanuals.us>

<http://www.somanuals.com>

<http://www.4manuals.cc>

<http://www.manual-lib.com>

<http://www.404manual.com>

<http://www.luxmanual.com>

<http://aubethermostatmanual.com>

Golf course search by state

<http://golfingnear.com>

Email search by domain

<http://emailbydomain.com>

Auto manuals search

<http://auto.somanuals.com>

TV manuals search

<http://tv.somanuals.com>