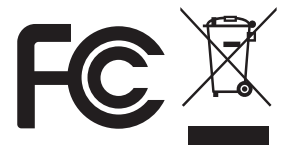


SYLVANIA

SMPK4600

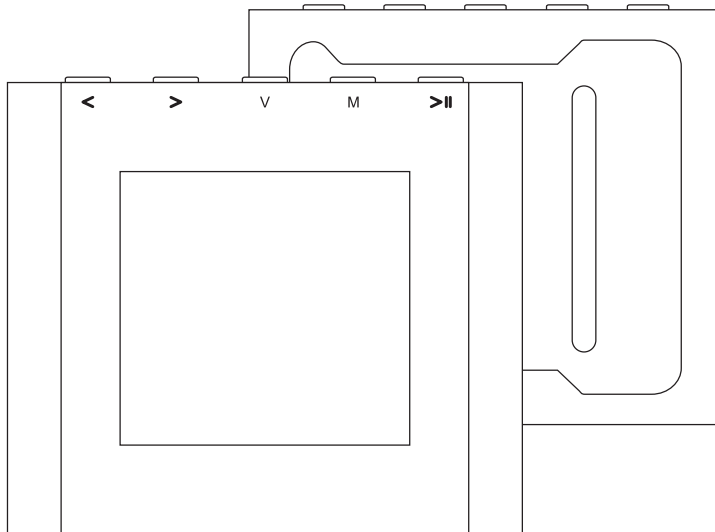
Sylvania is a registered trademark of OSRAM Sylvania Inc. Used under license.



Portable Media Player

Your Pocket Guide

EN



1

Install Software

2

Get Connected

3

Transfer Media

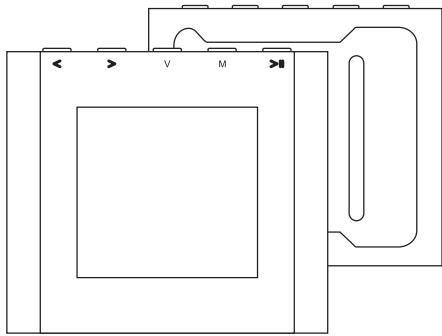
4

Plug Your Ears & Enjoy

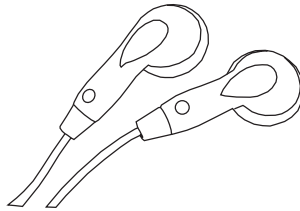
What's in the blister?	2
Know Your Player Well	3
System Requirement	4
Software Installation	5
Connect & Charge	6
Using the Micro SD Card	7
Transfer	8-9
Software Operation	10 - 13
Language Selection	14
Music Playback	15
Edit Lyrics	16
Repeat Mode	17
EQ Mode	18
Video Playback	19
Photo Browse	20
E-Book	21
Records	22
Game	23
Technical Data	24
Trouble Shooting	25

What's in the blister?

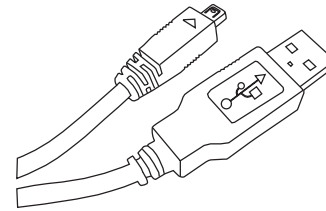
What's in the blister?



Portable Media Player



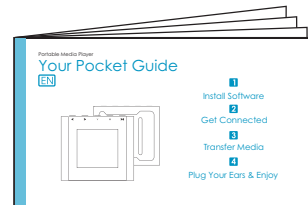
Earphone



USB Cable

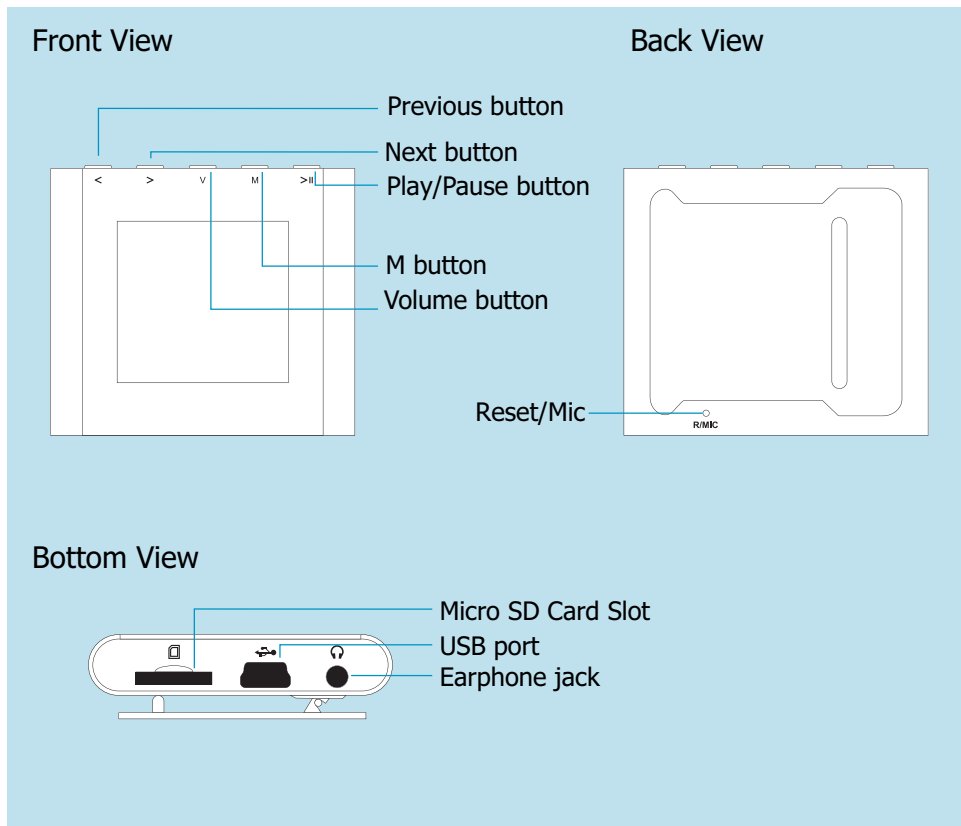


- CD-ROM containing:
- Media player driver for Windows® 98/98SE
 - Software for converting .act files into .wav files.
 - Software for formatting internal memory.



Your Pocket Guide

Plug Your Ears, and Enjoy



	To	Press
General	Power On/Off	Hold > long
	Scroll through lists	< >
	Select Option	M
	Return to previous menu	Hold M long
	Reset / Mic	Press to Reset
Music	Play/Pause songs	>
	Jump to next song	>
	Fast Forward	Hold > long
	Move back to previous song	<
	Fast Backward	Hold < long
	Display lyrics	Hold M long
	Stop lyrics display	M
Movie	Volume up	Press v and press >
	Volume down	Press v and press <
	Play/Pause a movie	>
	Jump to next movie	>
	Fast Forward	Hold > long
Images	Move back to previous movie	<
	Fast Backward	Hold < long
	Select image	>
	Jump to next image	<
	Jump to previous image	>
	Quit to main menu	Hold M long

You'll need a computer with:



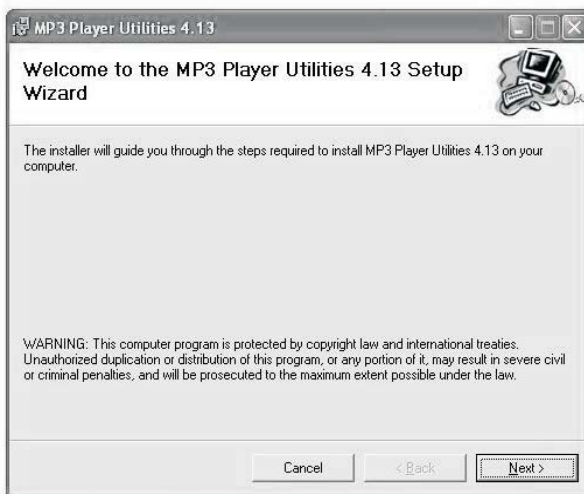
Windows® 98/98SE/ME/2000/XP/Vista
Pentium Class or faster Processor
CD-ROM Drive
64MB RAM
30MB free hard disk space
USB Port

Software Installation

Software Utilities Installation

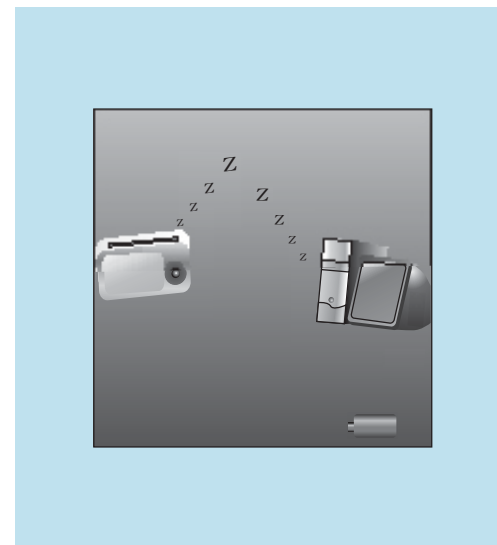
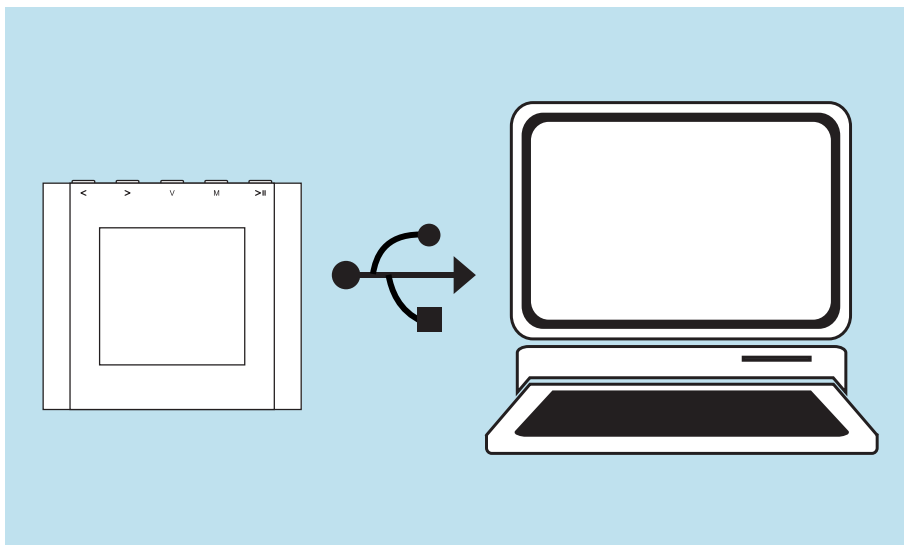
Insert the CD into the CD ROM drive of your PC.
Click **Setup.exe** to start driver installation.
Follow the on-screen-menu to complete the installation.

Click **Close** once you reach the **Installation Complete** screen.



For Windows® 98/98SE users, please install the driver in the CD-ROM before downloading any files to your player.

Connect



Your player will be charged while being connected to PC through the USB cable.
! You will see the charging animation in the bottom right hand corner of the display.
The player is fully charged when the charging animation stops.

Using the Micro SD card

After this unit is connected with the computer, you will find two moving disks. The first one is the built-in memory disk for this unit and the other is the disk for the Micro SD card. If no card is inserted, the second disk cannot be opened.

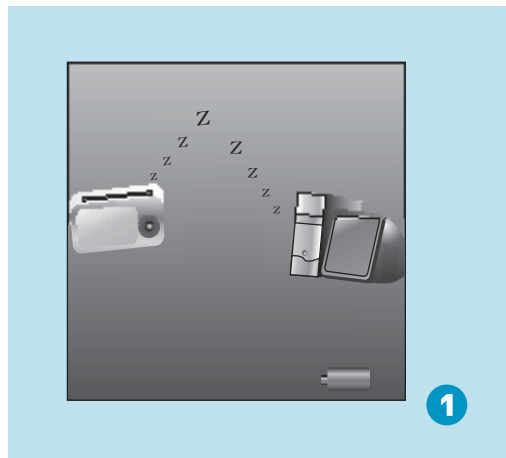
Inserting and Pulling out the Micro SD card

Inserting: Put the Micro SD card face up (side with words) (with the direction of the clip side as the face), and slightly force the card into the socket of the card, i.e. connecting the unit. Under this state, you can play the content in the Micro card.

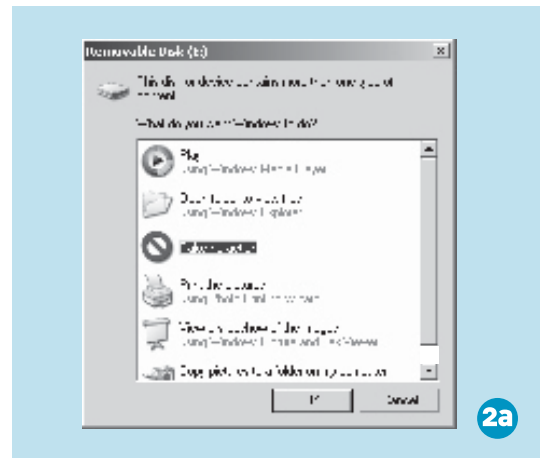
Pulling: Slightly push the Micro SD, and it will bounce by a section, and then you can take it out.

Caution: Please perform inserting and pulling operation when power is off! Otherwise, it will lead to the loss or damage to the files within the unit! If no card is inserted, the computer will be unable to perform read and write operation for the disk notes of the later moving disk (Micro SD card).

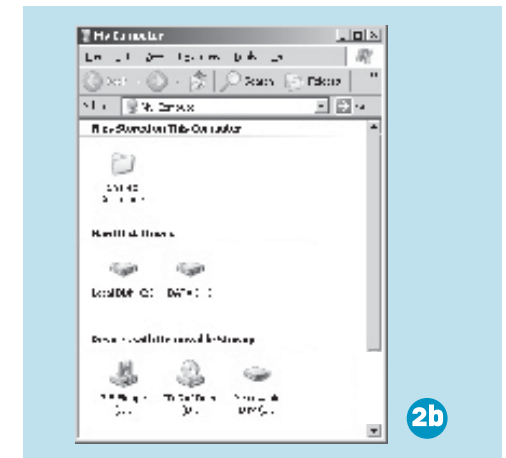
Get Your Player Connected



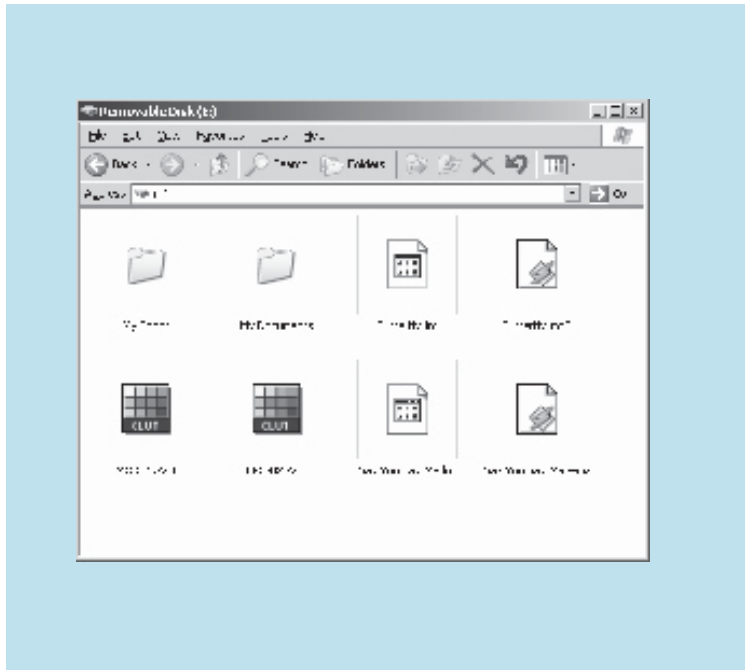
Step 1:
Set the Online Device of the player as USB Disk (Refer to Page 6), then connect it to your PC by USB cable. Once the connection is successfully made, the above screen display (1) would be shown. Try re-connecting the player if the above screen doesn't appear.



Step 2:
The above screen (2a) would appear. (Apply only to Windows® XP)
Choose **Take no action** and click **OK** to close the window.



Double click **My Computer** on your desktop and the above window (2b) would appear. Look for the **Removable Disk** icon.



Step 3:

Double click the **Removable Disk** icon.
Note: Do not disconnect the USB cable once you click into the removable disk window. Such action may cause data loss or problems to the player.

Drag and drop your media files into the removable disk.

You can create any folder or directory in the removable disk.

Close the removable disk window and disconnect the player from your PC after the data transfer.

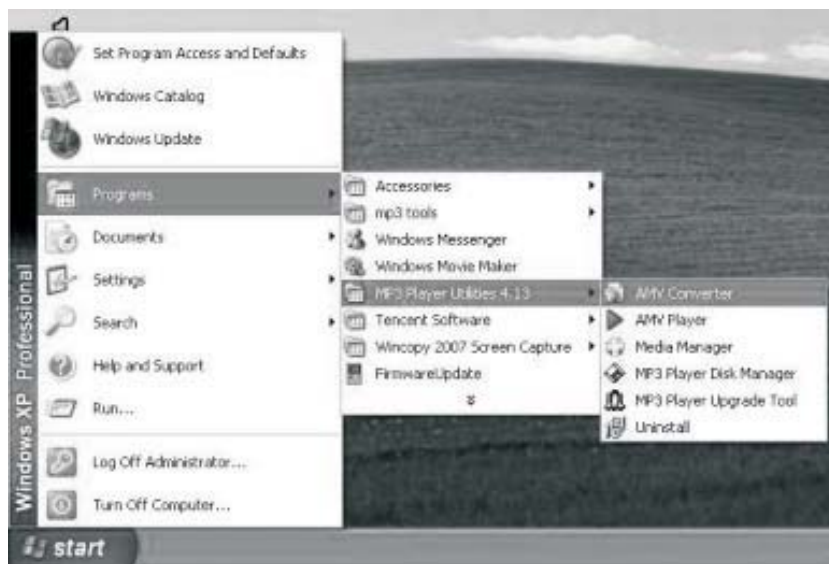
Transfer Music, Image & Movie

Software Operation

Software Operation

You can convert your favorite video file in any other format into the .AMV format with the help of the [AMV converter](#) (Programs\MP3 Player Utilities 4.13\AMV Converter).

The converting progress is shown as below.



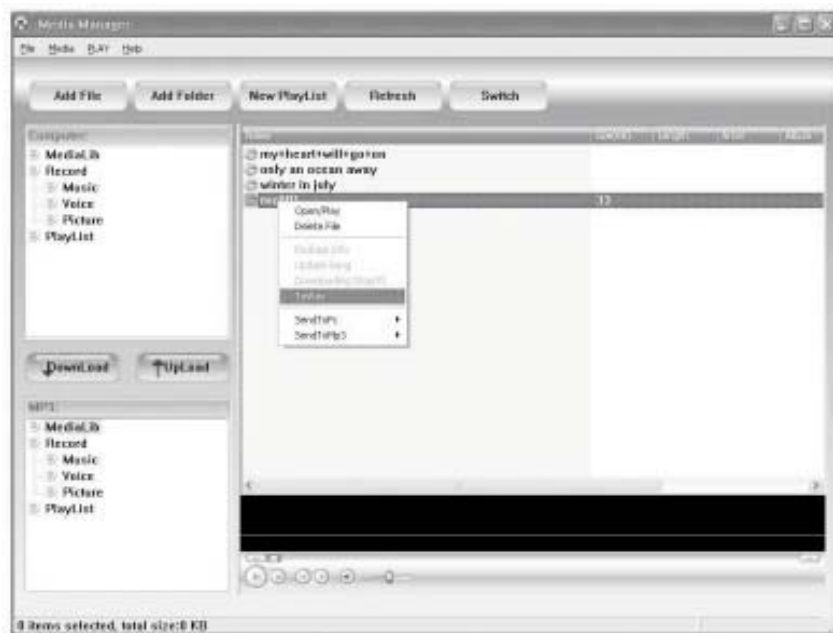


Enjoy Your AMV Movie

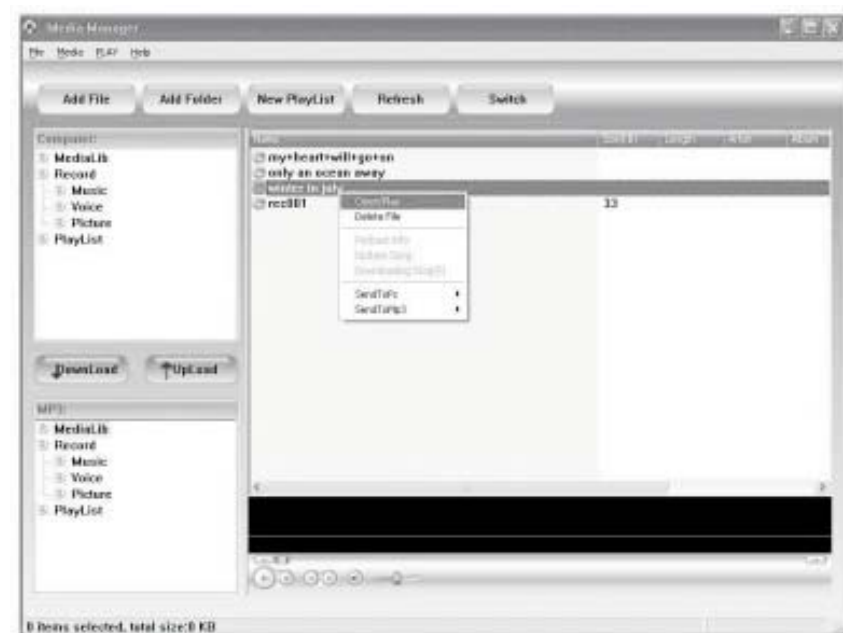
To enjoy the converted movie on your PC, you can play it thru the [AMV player](#) ([Programs\MP3 Player Utilities 4.13\AMV Player](#)).

Software Operation

Software Operation



You can enjoy songs from both PC and your player thru the [Media Manager](#) (Programs\MP3 Player Utilities 4.13\Media Manager).



You can also convert your recorded .ACT voice into .WAV format thru the [Media Manager](#) .



You are also allowed to format the memory of your player, or divide it into two partitions in [Programs\MP3 Player Utilities 4.13\MP3 Player Disk Manager](#)



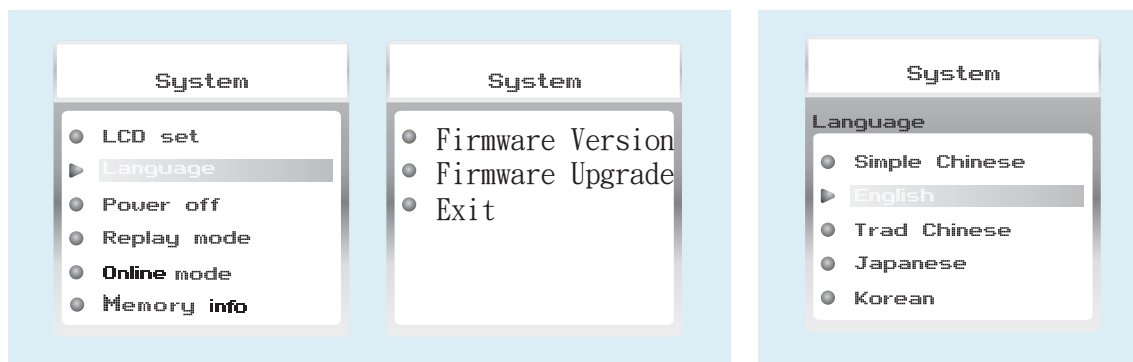
If the updated version is available, please use [MP3 Player Firmware Upgrade Tool](#) to upgrade it.

Language Selection

Select Your Preferred Language

Step 1:

Press < / > to select **Setup** on the main menu, then press **M** to enter its sub-menu.



Step 2:

Press > to select **Language**, then press **M** to confirm.

Step 3:

You can select your preferred language by pressing < / >, and then press **M** to confirm your setting.

Music Playback

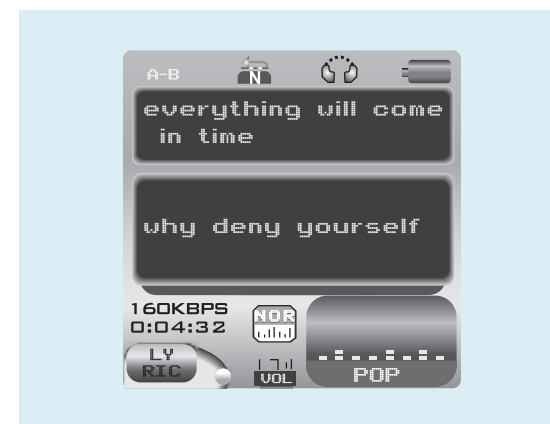


Select **Music** on the main menu and press **M** to enter the music mode, then you can select different songs by pressing **< / >**, and you can easily play the song you've chosen by a simple press of **>||**.

While enjoying music, you can press **>||** to pause or continue the music; press **< / >** to move back to the previous song or jump to the next song; Hold **< / >** long to move your song forward or rewind it. If you want to adjust the volume, please press **v** button and then press **<** or **>** button.

A-B repeat

While playing music, you can press **M** to enter sub-menu. Press **< / >** to select Repeat Mode and then press **M** again to select Replay. The mark A is flashing on the display and wait for the setting. Press **< / >** to set mark A. Mark A is set if flashing stopped. Press **< / >** to set mark B. Mark B is set if flashing stopped. The music between mark A and mark B will be repeated until you press **M** button to disable the function.



Display Lyrics

The edited lyrics will be displayed synchronously if you hold **M** while playing music. And you can press **M** once to quit the lyrics display scene.

Edit Lyrics

You can copy the synchronous lyrics from internet, and create a new [Text Document](#) on your PC, paste them, and then select to save this document in the extension of [.LRC](#) shown as below.

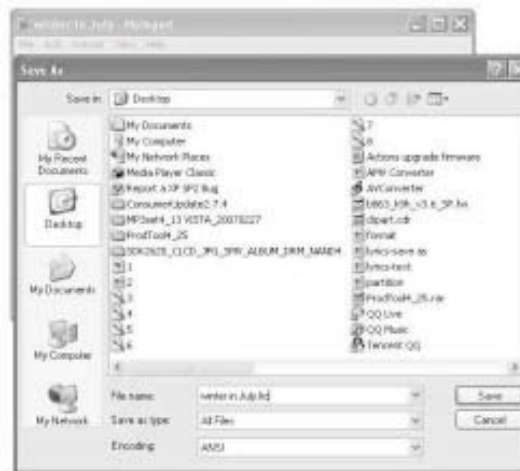
Then put both [.LRC](#) and [.MP3](#) (or [.WMA](#)) files of the same song into the same folder in the removable disk. Your lyrics would be shown when you play that song.



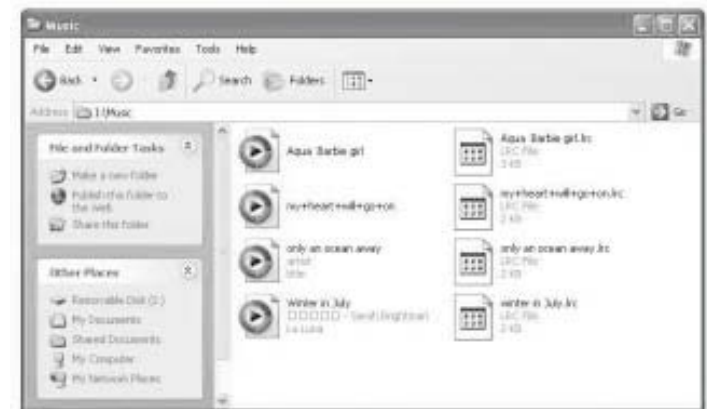
1



2



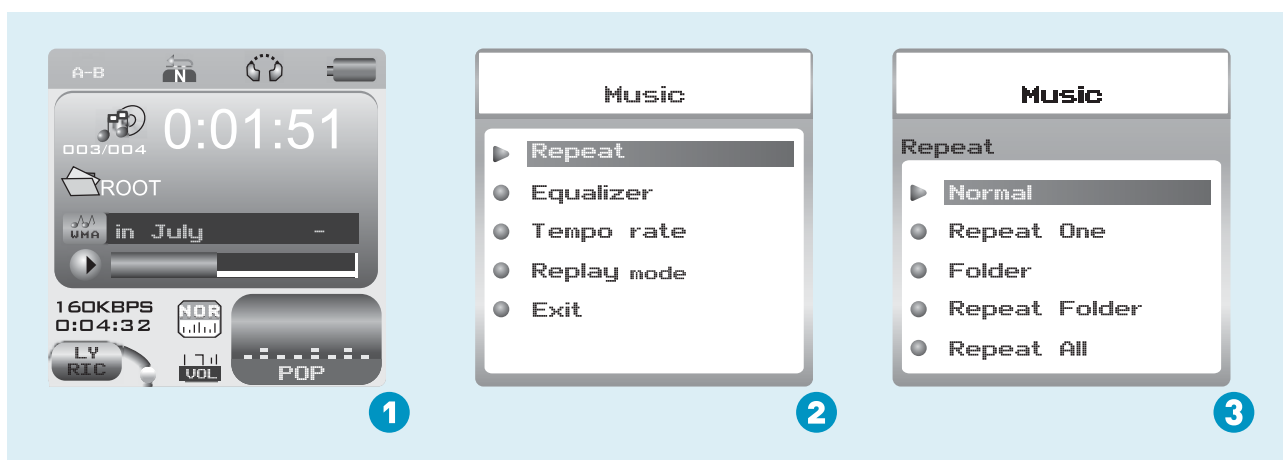
3



4

Repeat Mode

Repeat Mode



Procedure:

In PLAYING mode (1), press **M** while playing music to enter the selection menu screen (2). Choose **Repeat** and press **M** to enter the **Repeat** menu screen (3).

8 Repeat Modes are available:

Normal, Repeat One, Folder, Repeat Folder, Repeat All, Random, Intro, A-B Repeat.

Normal

All music files will be played one by one and stopped at the last music until you disable this function.

Repeat One

The currently played song will be played repeatedly until this function is disabled.

Folder

All music in the selected folder would be played once until this function is disabled.

Repeat Folder

All music in the selected folder would be played from the beginning to the last one repeatedly until this function is disabled.

Repeat All

All music would be played from the beginning to the last one repeatedly until this function is disabled.

Random

All music would be played randomly until this function is disabled.

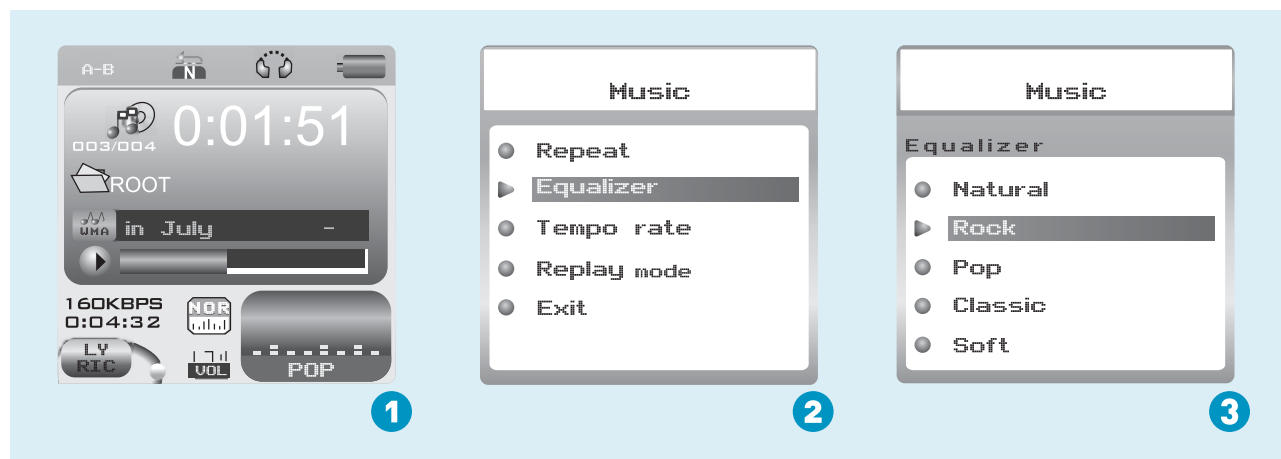
Intro

All music would be played for 10 seconds from the beginning until this function is disabled.

A-B Repeat

All music would be played from the desired place to the target place until this function is disabled.

Listen to your music at its best



Procedure:

In PLAYING mode (1), press **M** while playing music to enter the selection menu screen (2). Press **>** to select **Equalizer** and press **M** to enter the **Equalizer** menu screen (3).

7 EQ Modes are available: Natural, Rock, Pop, Classic, Soft, Jazz, DBB.

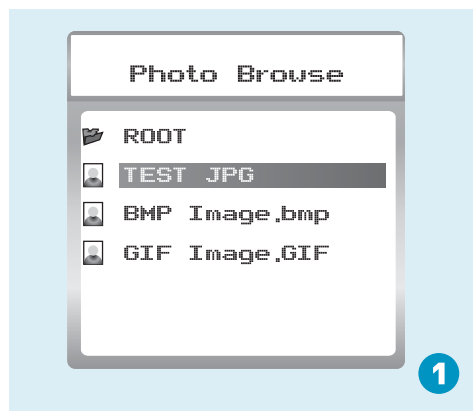
Video Playback

Select **Video** on the main menu and press >|| to enter the video playback mode. You can select different movies by pressing < / > and press >|| to start playing.



While enjoying video, you can press >|| to pause or continue the movie, and press < / > to move back to the previous movie or jump to the next one. You can move your movie forward or rewind it while playing by holding < / > long. If you want to adjust the volume, please press v button and then press < or > button.

Photo Browse



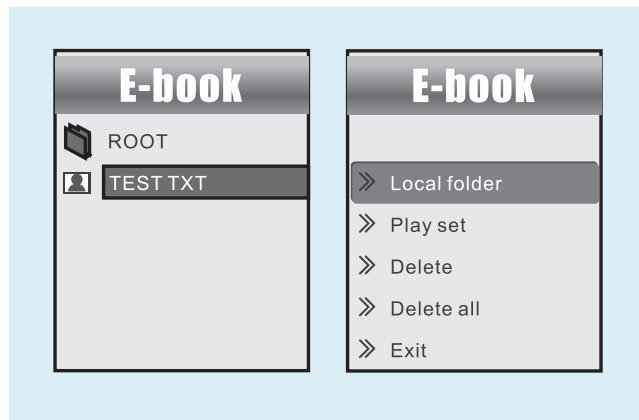
Select **Photo** on the main menu and press **M** to enter the ROOT folder with listed photos under it. You can select different photos by pressing **< / >**, and press **>||** to view. During photo browse, you can switch to the previous or next photo by pressing **< / >** too.

SlideShow

If you want to create a SlideShow for all photos, you can press **M** when you select a photo on the ROOT folder list, then press **>** to select **Play set**, press **M** then **>** to select **Auto play**. Press **M** to get access to the Screen of Auto Play Gap Setting. You can adjust the auto play gap by press **< / >**. Then press **M** to confirm your setting.



Ebook



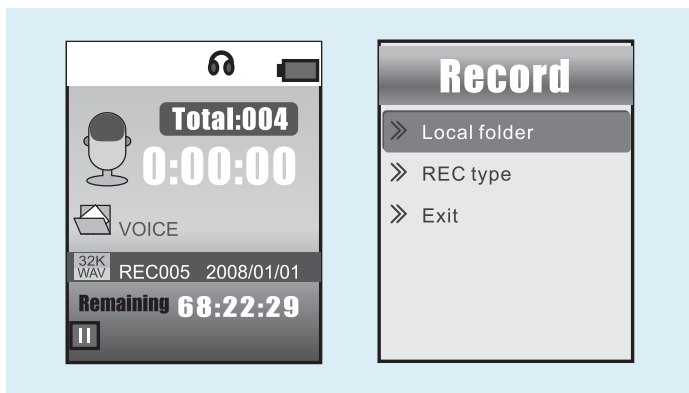
Press `< / >` to select **Ebook** on the main menu, and press `M` to enter it. Press `>` to select desire text file , and press `>||` to enter it. Press `>||` again to return to previous page. While reading an article, press to bookmark the text.



Auto Play Setting

After entering Ebook, press `M` to select **Play Set**. Press `>` to choose **Manual Play or Auto Play** . If you choose **Auto Play** , the article will be scrolled automatically according to the Auto Play Gap you preset. Press `< / >` to select **Auto Play Gap** on the sub-menu of Play Set. .

Voice Recording

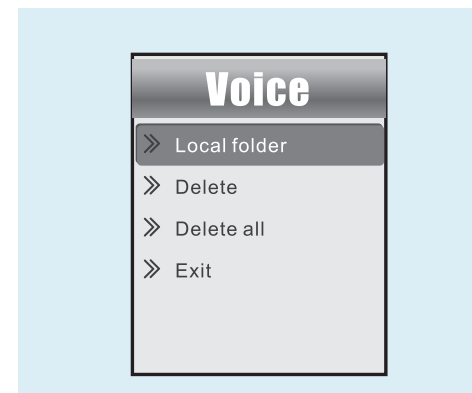


Press **< / >** to select **Record** on the main menu, and press **M** to enter it.

Press **>||** to start it and press **M** to save the recorded voice.

To preset the format of the recorded voice file, you could select to go into **Rec Type** on the sub-menu of Recorder. Press **M** to enter sub-menu and press **>** to select **Rec Type**.

Voice Playback



If you want to play the recorded file, you can press **< / >** to select **Voice** on the main menu, and press **M** to enter it.

Press **M** to select **Local Folder**, and the recorded voice files will be listed after you press **M**.

You can press **< / >** to select one, and press **M** to start playing.

Game

Game

Press < / > to select **Game** and press **M** to confirm.

Puzzle

After entering the sub-menu, press < / > to select **Puzzle** and press **M** to confirm. Press < / > to move to left and right. Press **v** to move downward and press **>||** to go upward.

Sudoku

After entering the sub-menu, press < / > to select **Sudoku** and press **M** to confirm.

Press < / > to move left and right and press **v** to go upward. Press **>||** to choose from 0-9. After filling all the numbers, press **M** to check the final result.

General Information		Voice Recording	
Power Supply	120mA, 3.7V Lithium battery	Supported File Types	.WAV files
Dimensions	48mm x 42.1mm x 13.3mm	Video Playback	
Weight	25g	Supported File Type	.AMV files (Resolution 128 x128)
Display	1.5 inch Colour Display	Photo Browse	
Capacity	128MB/256MB/512MB/1GB/2GB/4GB internal flash memory	Supported File Type	.JPG, .BMP and .GIF for photo files
Operating System	Windows 98/98SE/Me/2000/XP/Vista MAC OS 9.0, 10.0	Viewing Mode	Manual Browse, Slideshow
Interface	USB 2.0 Full Speed	Game Function	
Audio Playback		Game Types	Puzzle & Sudoku
Compression Format	.M P3 (8kbps ~ 320kbps), .WMA (5kbps ~ 384kbps) for music at Constant Bit Rate		
S/N ratio	85dB		
Earphone Output Power	9mWx, 32ohm		

What should I do if...

Q: I cannot enter the MUSIC mode after using the player for a period of time.

A: You should format the memory of the player under connection to PC.

(Be sure you remember to backup the data in your player before performing the above action.)

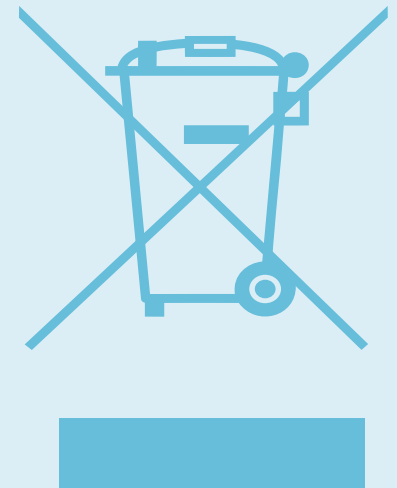
Q: I cannot convert my video file into the .AMV format.

A: Please make sure that the media player software for video files has been installed on your PC. Then try to convert again.

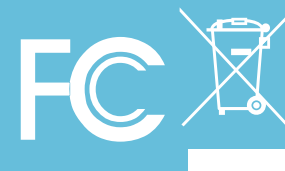
Disposal of your old product

Electrical and electronic equipment (EEE) contains materials, parts and substances which can be dangerous to the environment and harmful to human health if wastes of electrical and electronic equipment (WEEE) are not disposed correctly.

Equipments which are marked with the WEEE logo (as shown on the right), should not be thrown away with your household waste. Contact your local Authority Waste Disposal Department as they will be able to provide details of the recycling options available in your area.



Specifications are subject to change without notice.
No part of this document may be reproduced or transmitted
in any form or by any mean, electronics or mechanical
including photocopying and recording
or translated to another language for any purpose .



Free Manuals Download Website

<http://myh66.com>

<http://usermanuals.us>

<http://www.somanuals.com>

<http://www.4manuals.cc>

<http://www.manual-lib.com>

<http://www.404manual.com>

<http://www.luxmanual.com>

<http://aubethermostatmanual.com>

Golf course search by state

<http://golfingnear.com>

Email search by domain

<http://emailbydomain.com>

Auto manuals search

<http://auto.somanuals.com>

TV manuals search

<http://tv.somanuals.com>