



SYNET



WINDY31 USB Wireless Router Reviewers' Guide

Before Installing SyNET WINDY31 for Review: **What Can Windy31 Do For You?**

Thank you for considering SyNET WINDY31 for your evaluation. We anticipate your experience will be a positive one. We are also confident you will discover how easy and reliable SyNET WINDY31's portable wireless networking performance is to operate, while providing LAN card functioning, too.

You or your co-workers might have faced a host of unpleasant and inconvenient situations before as following:

Situation A: You wanted to access the internet in a public area such as a trade show, library, hotel, or airport. But, only a wireless internet service subscriber can use the internet.

- **Existing** : Only a wireless internet service subscriber can use the internet
- **Windy31** : Plug the Windy31 into any computer that is connected to the internet, and you can use the internet service through your laptop

Situation B: You wanted to share your internet connection with friends or co-workers without having to pay for each line at a wireless service providing café, airport, hotel, etc. But, no choice for non-subscribers. You had to pay no matter what.

- **Existing** : No choice for non-subscribers. You have to pay for each user.
- **Windy31** : Plug the Windy31 into the subscriber's computer and share the connection with friends and co-workers at no additional cost.

Situation C: You wanted a clean and neat working space. But, limited cleanliness because of all the wires from the LAN cables.

- **Existing** : You should have at least one wireless router connected to AP with wire
- **Windy31** : Just plug the Windy31 as tiny as the USB Memory stick right into the HOST computer without hassle of wires

WINDY31 knows for sure how to fulfill all that you want for the above three situations:

USB Type
Wireless Broadband Router
with **Wireless LAN + Wireless Access Point**

- **Easy-setup using the auto-run installation program**
- **Share wirelessly up to 32 terminals at the same time**
- **Security and protection available through firewall functions**

To supplement your review process, the following are guidelines for SyNET WINDY31's proper configuration to ensure optimal performance.

1. Recommended System Requirements:

SyNET recognizes the importance of compatibility among a diverse installed user base using both older and newer generation operating systems. WINDY31 works with most windows operating systems from Win XP through **Windows Vista** (details below).

We recommend your computer meets the following minimum requirements:

- a. Windows XP/Vista
- b. Intel's Pentium IV processor or above
- c. 512 MB RAM
- d. USB 1.1 or 2.0 Interface
- e. Internet Explorer 5.0 or higher
- f. Requires more than 30M bytes of usable hard disk space

2. Internet Connection

During WINDY31's installation, if you need it to be used as an AP or a Router, make sure the computer has a working Internet connection to receive wireless signals from other wireless devices that you want to share with.

Or just for the purpose of using it as LAN card, you may not have internet connected.

3. Call Technical Support with any questions or problems

SyNET offers unlimited technical support for all our products. You may contact us via email at support@SyNETUSA.com with "WINDY31 Evaluation" in the subject line, or call us at 1-866-877-9638. The SyNET Technical Support Team can answer and resolve most issues within just a few minutes. Please feel free to contact us if necessary.

With these suggestions in mind, we hope your experience with SyNET WINDY31 is a remarkable one. We fully intend to continuously develop and enhance our products to achieve superior levels of performance as a leading provider of wireless network application.

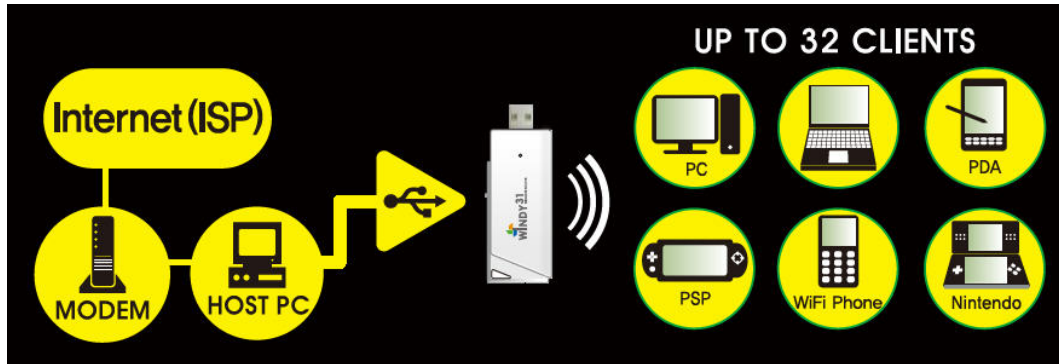


Quick Guide Overview

To support your evaluation process, we have created quick guides to supplement our User Manual. These quick guides highlight key features in SyNET WINDY31 you don't want to miss.

1. **Installing SyNET WINDY31** – Quick overview of the installation process both on Windows XP and Vista.
2. **WINDY31 Gateway Manager Setting** – Explains what features are available, and how to properly interpret the information provided by the program both on Windows XP and Vista.
3. **LAN Adapter Setting** – Explains how to adjust the setting to switch to LAN Card Mode and use both on Windows XP and Vista.

4. **Directly Input IP Address** – In case of client device is not automatically connected to the server computer.



Installing SyNET WINDY31

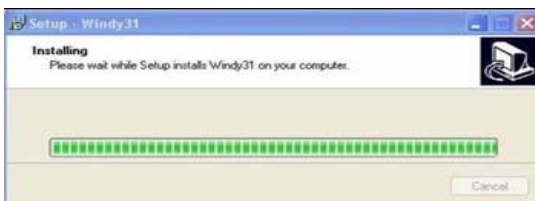
Checklist before installing

- ① Computer to be installed with Windy31 must have more than one LAN Adapter.
- ② Computer to be installed with Windy31 must have Internet connection.

Installation

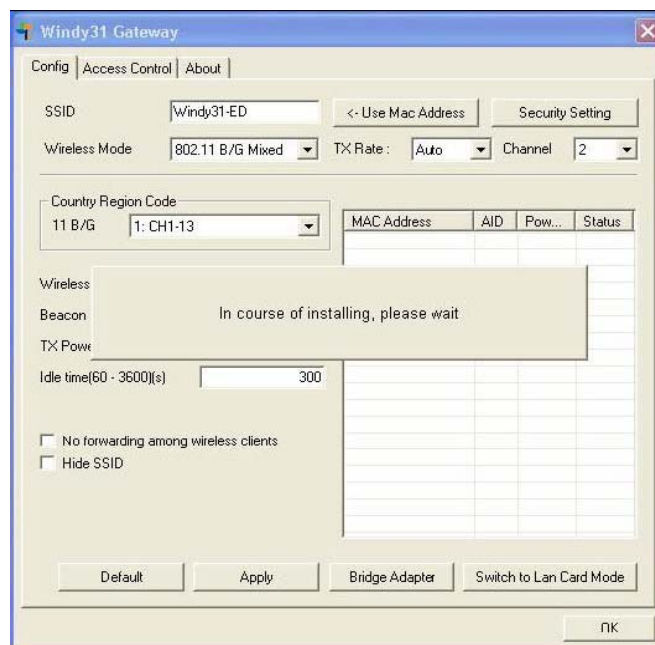
Please check your computer for Virus and Spyware, before installation.
Some Viruses and Spywares may interfere automatic installation of WINDY31 driver and utility programs.

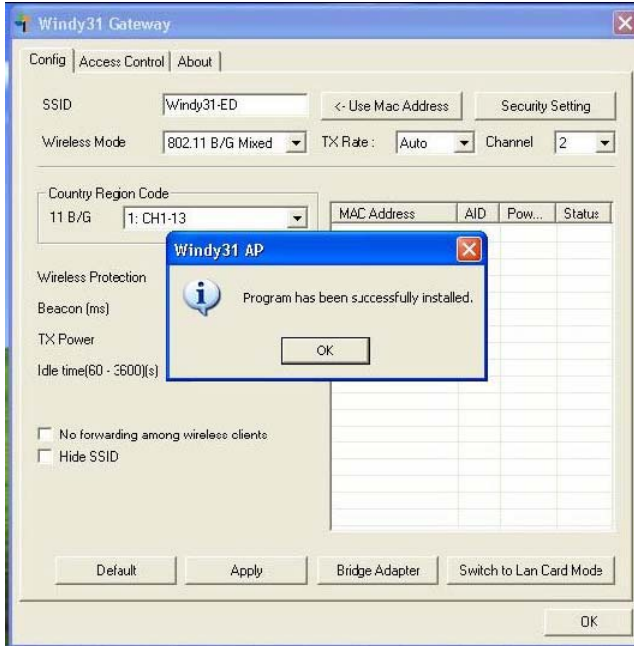
(Windows XP)



- 1) Insert Windy31 into USB port of Laptop or Desktop PC and program will automatically run as shown on the left.

2) Please wait until "Windy31 Gateway Manager" window appears, "Windy31 setting in-progress" and "setting complete" windows are displayed as shown below. This process will take some minutes as it is installing the Windy31 Gateway. (Installation time may differ according to computer configuration)



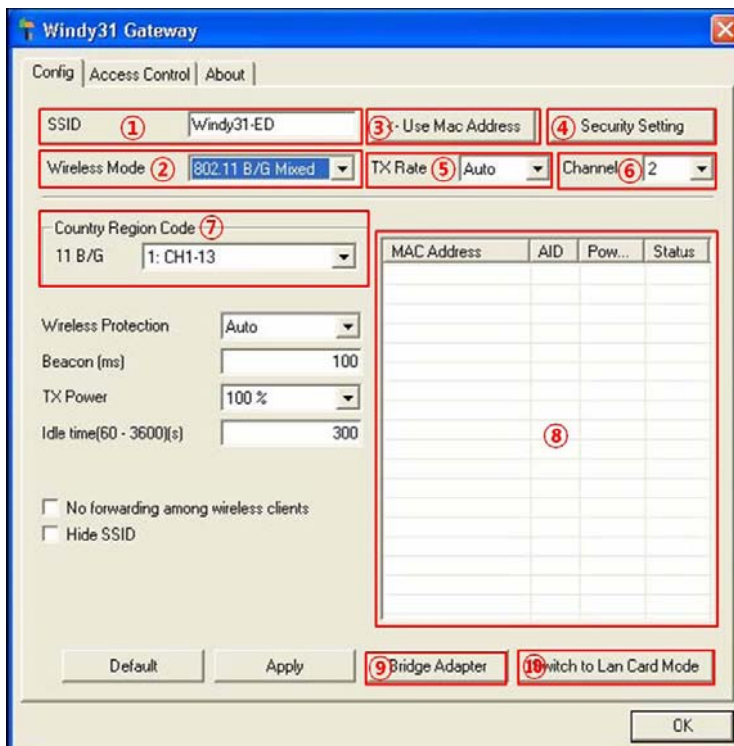


3) In Step 2, after “Program has been successfully installed” appears, click “OK”. Then, Windy31 has completed installation.

Connection method may differ according to Wireless LAN device, please refer to Wireless LAN usage method.
(For wireless device usage method, please refer to wireless device product manual or please contact the provider.)

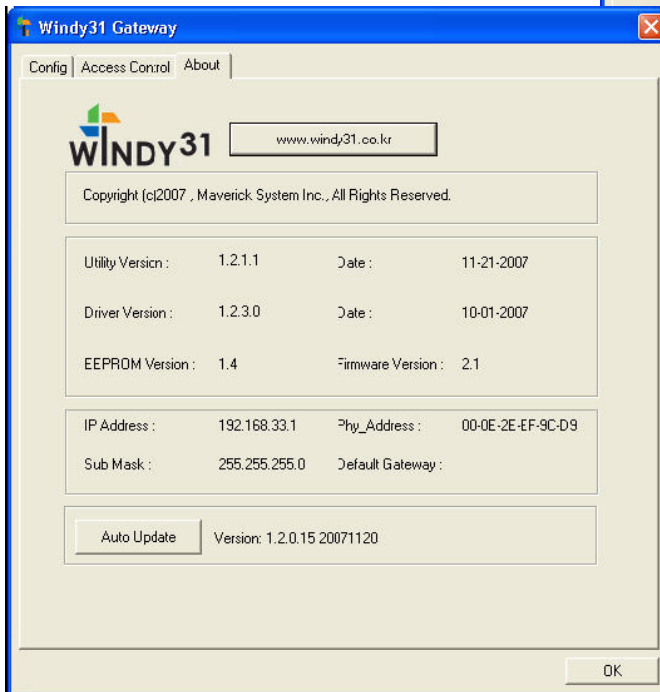
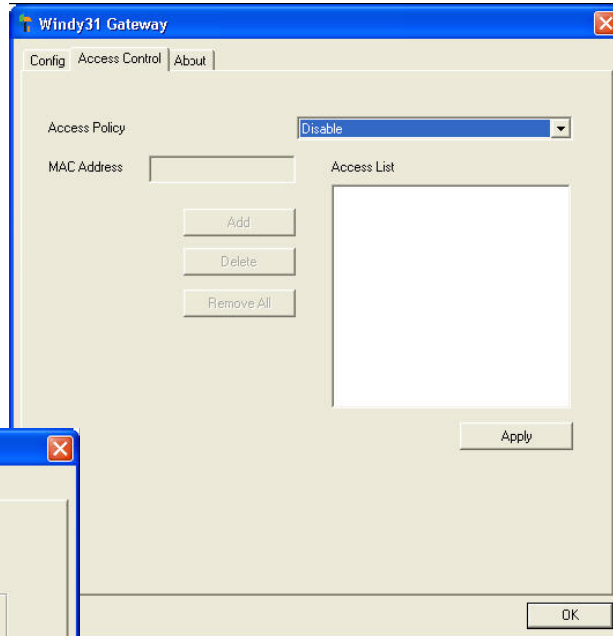
WINDY31 Gateway Manager Setting (Windows XP)

Windy31 Gateway Manager Setting screen.



- ① **SSID:** Name to be used in wireless connection (Default is “Windy31-XX”)
- ② **Wireless mode:** Assign wireless LAN mode (802.11b=11Mbps/802.11g=54Mbps)
- ③ **Use Mac address:** Assign SSID as MAC address .
- ④ **Security Settings:** Assign wireless security settings
- ⑤ **Transmission rate:** Designate transmission rate.
- ⑥ **Channel:** Assign wireless channel, automatically.
- ⑦ **Area (Country code):** Assign channel range used by each country.
- ⑧ **Wireless LAN connection list:** List of wireless device's MAC address connected to Windy31.
- ⑨ **Bridge adapter:** Allow Internet-connected network card change
- ⑩ **Switch to LAN card mode:** Button to use Windy31 as LAN Adapter. (In LAN Adapter mode, Windy31 Gateway functions cannot be used)

Internet access by other users can be controlled in “Access Control” menu of Windy31 Gateway as shown on the right.



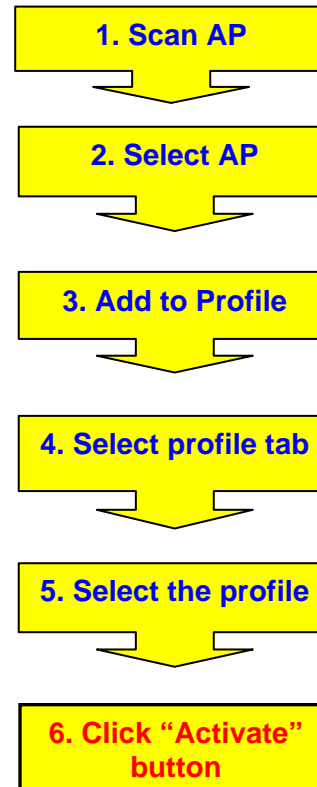
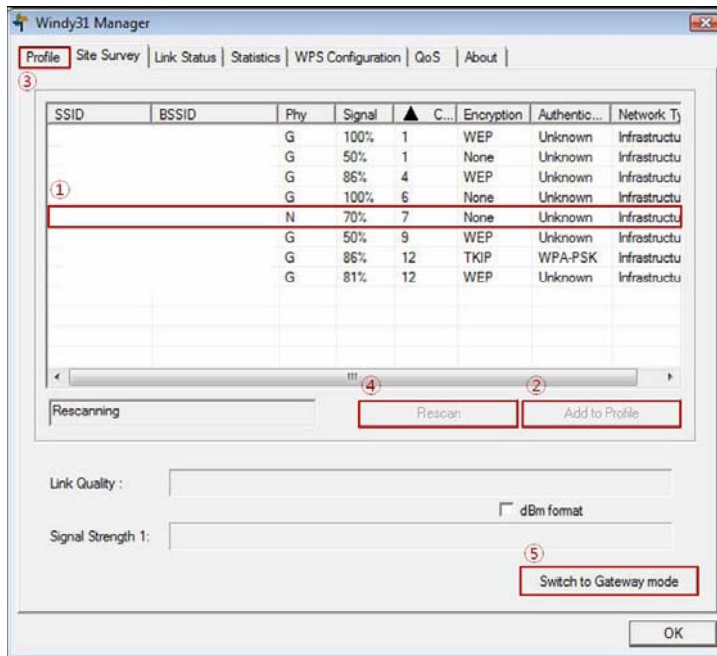
Software upgrade

- ① **Disable** : Disable access to the internet .
- ② **Allow All** : All the Mac addresses listed in the table can be accessed to the internet.
- ③ **Reject All** : All the Mac addresses listed in the table can not be accessed to the internet.

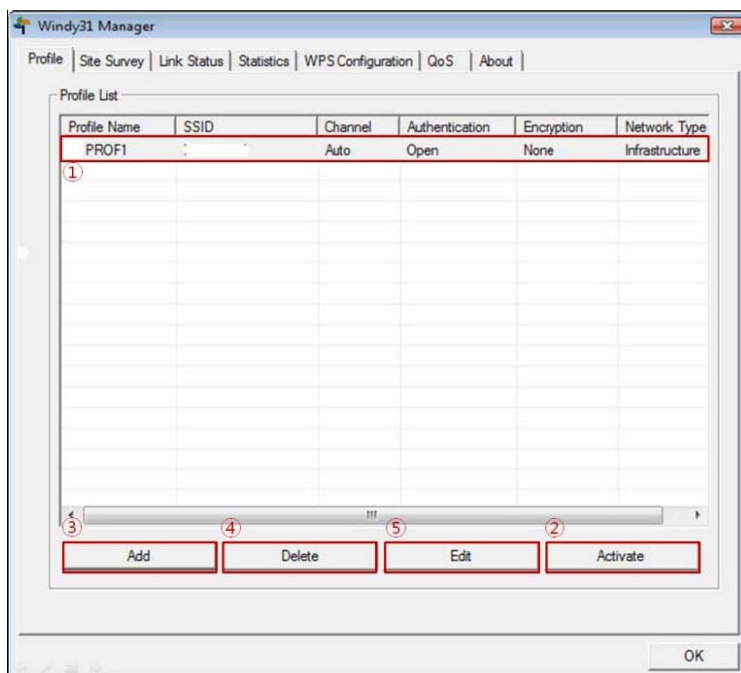
Click “Auto Update” to confirm that you are using the most updated software version. If you are currently using the previous version of Windy 31 software, program, the most updated version will be appeared.

LAN Adapter Setting (Windows Vista)

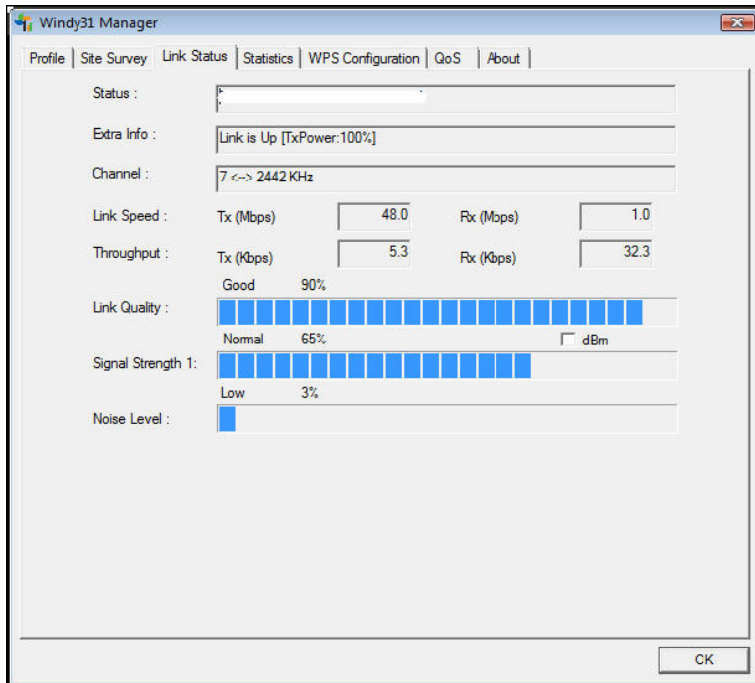
Wireless LAN connection



- ① Select AP as connection mode from AP list
- ② **Add to Profile** : Add the selected AP to Profile
- ③ **Profile** : Menu to connect to AP using Added Profile
- ④ **Rescan** : Scan Wireless AP
- ⑤ **Switch to Gateway mode** : Switch to Wireless Router mode



- ① Select AP to connect
- ② **Activate** : Connect to the selected AP with wireless
(Must click "Activate" button for using wireless service)
- ③ **Add** : Add the Profile
- ④ **Delete** : Delete the Profile or disconnect wireless connection
- ⑤ **Edit** : Modify profile configuration



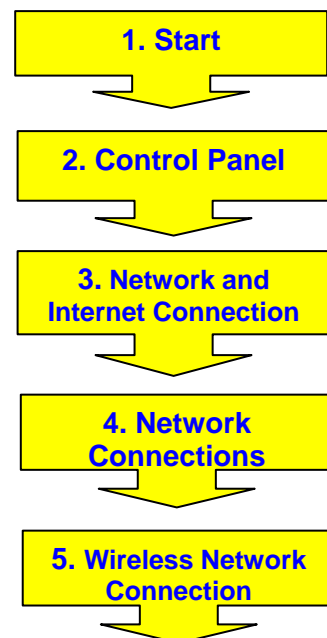
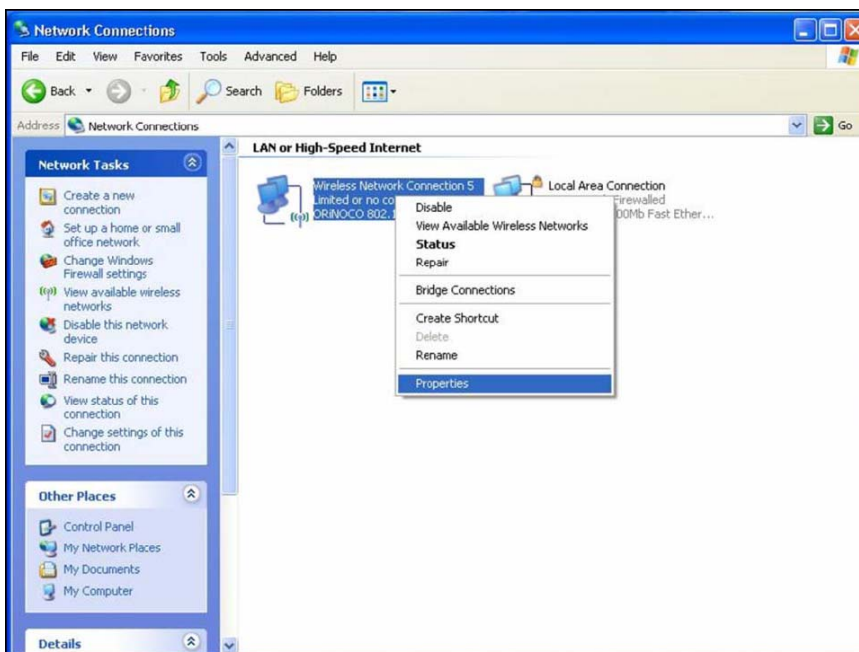
Link Status dialog shows specific wireless connection

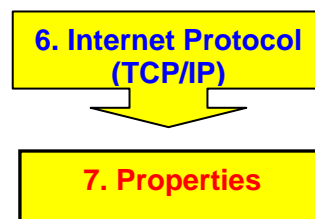
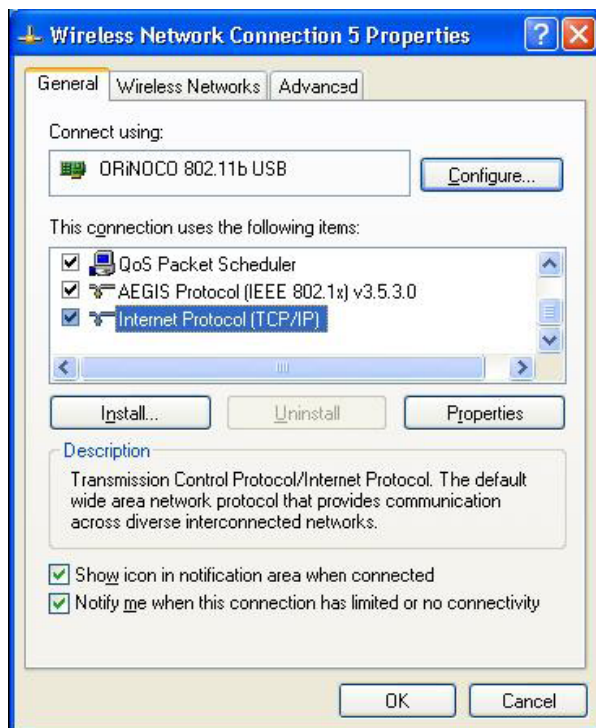
Directly Input IP Address (Windows XP)

On Client Device only:

IP Address may need to be put into some laptops or PDAs(with WinCE 5.0 below version) in order to get more stable connectivity, but PSP, PMP, or Nintendo etc. using WinCE 5.0 works fine without having to input it.

- Select "Wireless Network Connection", click right-side of mouse to select "Properties" on the drop-down menu.



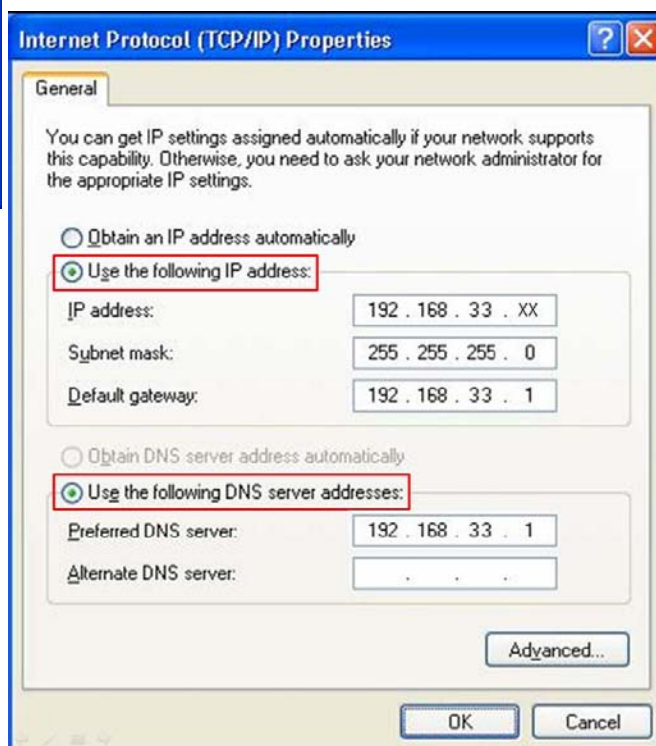


On “Internet Protocol (TCP/IP) Properties” below, select “Use the following IP Address” to directly input IP Address.

- **IP Address** : IP address which used in Windy31, is in-between the following IP range **192.168.33.2** to **192.168.33.254**.

- **Subnet Mask** : Windy31 uses C-class by default. (**255.255.255.0**)

-Default gateway : Windy31 uses Default gateway. (**192.168.33.1**)



DNS server for each network

Bellsouth Fast access DSL: Georgia, USA (**DNS: 205.152.37.23**)

Comcast (pick the nearest!) USA: Comcast (national) Primary (**DNS: 68.87.66.196**)

ORSC Public Access DNS Name servers: (**DNS: 204.57.55.100**)

Speakeasy (pick any two!) USA: Washington state and Oregon (**DNS: 66.93.87.2**)

What is an IP address?

IP or Internet Protocol is a unique quartet of numbers ranging from 0~ 254. These unique numbers are assigned to one specific computer at any given time. An IP address is divided into two parts: a network number and a host number.

The idea is that all computers that operate on one physical network will have the same network number (like a street name). The rest of the IP address defines an individual computer (like a house number within a street).

Because IP addresses are a scarce resource, most Internet Service Providers (ISPs) will only allocate one IP address to a single customer or user. In the majority of cases, an IP address is assigned dynamically, so every time a computer connects to the ISP, a different address will be provided. However, these IP address are unique in the world of the Internet. Each IP address is registered to a person or to company (in most cases to an ISP).

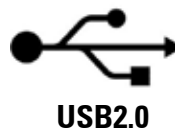
Technical Support

If you need technical support or have any questions regarding SyNET WINDY31, please feel free to contact us via e-mail support@SyNETUSA.com or call us during our normal business hours (9:00AM ~6:00 PM EST) at 1-866-877-9638. You can also fax in your questions if you prefer to our fax number: 1-201-931-0066.

Thank you for using SyNET WINDY31.



**AUTO
INSTALL**



54 Mbps

Free Manuals Download Website

<http://myh66.com>

<http://usermanuals.us>

<http://www.somanuals.com>

<http://www.4manuals.cc>

<http://www.manual-lib.com>

<http://www.404manual.com>

<http://www.luxmanual.com>

<http://aubethermostatmanual.com>

Golf course search by state

<http://golfingnear.com>

Email search by domain

<http://emailbydomain.com>

Auto manuals search

<http://auto.somanuals.com>

TV manuals search

<http://tv.somanuals.com>