

# Network Display Adaptor SX-ND4050G Setup Guide

Thank you for purchasing the Network Display Adaptor "SX-ND4050G". This Setup Guide provides information on how to set up and use SX-ND4050G.



English  
silex technology

## Supported OS

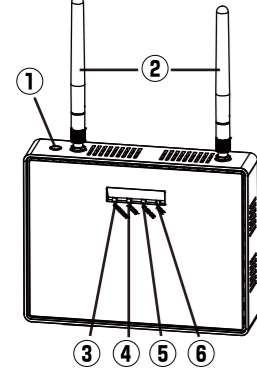
- Windows 7 (32-Bit Edition / 64-Bit Edition)
- Windows Vista (SP1 or newer) (32-Bit Edition / 64-Bit Edition)
- Windows XP (SP2 or newer) (32-Bit Edition)

## Package Contents

- SX-ND4050G
- Wireless antenna (2pcs)
- AC adaptor
- Rubber feet (4)
- Network Display Adaptor Setup CD (CD-ROM)
- Warranty Booklet
- GPL notice sheet (Distribution of source code licensed under the GPL license)
- Setup Guide (this document)

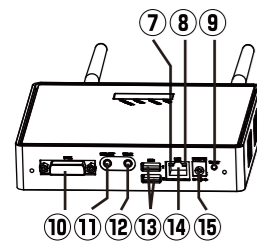
## Parts and Functions

FRONT

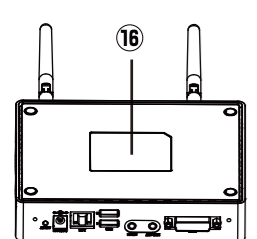


①	Configuration Check Switch
②	Wireless Antennas * Connect the attached antennas to the unit.
③	CONNECT LED (Green)
④	ALERT LED (Green/Red)
⑤	STATUS LED (Orange)
⑥	LINK LED (Green/Red)
⑦	Status LED (Yellow)
⑧	Link LED (Orange/Green)
⑨	Push Switch * Use this to initialize SX-ND4050G.
⑩	DVI-I Connector
⑪	Line-out Port
⑫	Line-in Port
⑬	USB Port
⑭	Network Port
⑮	Power Connector
⑯	Ethernet Address

BOTTOM

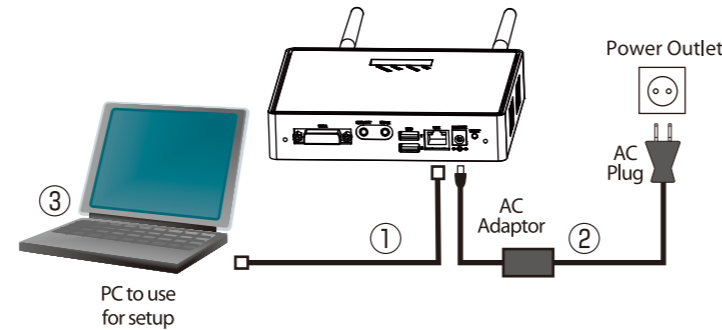


BACK



## Step 1 Getting Started

\* This Setup Guide explains how to configure SX-ND4050G via a wired LAN. For how to configure using a wireless LAN, please refer to the user's manual included in the CD-ROM.



\* By default, SX-ND4050G is set to start as a DHCP server. If there is a DHCP server already running on your network, please do not connect SX-ND4050G to your network until you finish the configuration.

1. The following items are required.



PC to use for setup



Network Cable

- Connect one end of the network cable to SX-ND4050G and the other end to the PC. (①)
- Connect the AC adaptor to SX-ND4050G and plug it into a power outlet. (②)
- Verify the CONNECT LED (Green) blinks and the LINK LED (Green) turns on.
- Power on the PC. (③)
- Check that the PC is set to obtain an IP Address automatically via DHCP. (If you are using Windows 7, see the instructions to the right for how to confirm this.)

\* If the PC is not set to automatically obtain an IP Address, take note of the current address and change the PC's setting to obtain an IP Address automatically via DHCP.

SX-ND4050G is now ready for setup.  
Go on to **Step2** to install the necessary applications.

## How to view your network settings on Windows 7

- Click **Start - Control Panel - View network status and tasks**.
- Click **Connections: Local Area Connection** under **View your active networks**.
- In the **Local Area Connection Status** dialog, click **Properties**.
- In the **Local Area Connection Properties** dialog, select **Internet Protocol Version 4(TCP/IPv4)** and then click the **Properties** button.
- Confirm that **Obtain an IP address automatically** is selected.

## Step 2 Installing Applications

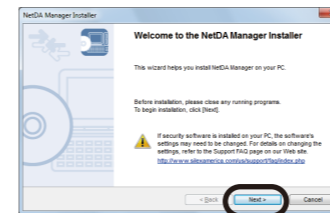
1. Insert the **Network Display Adaptor Setup CD** into the PC.

2. Click **NetDA Manager installation**.

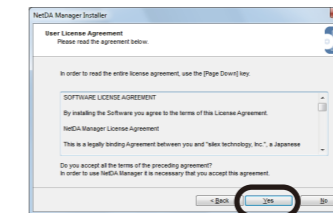


\* In Windows 7, the User Account Control screen is displayed. Click **Yes**.  
\* In Windows Vista, the User Account Control screen is displayed. Click **Continue**.

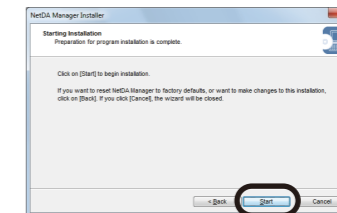
3. The NetDA Manager Installer wizard is displayed. Click **Next**.



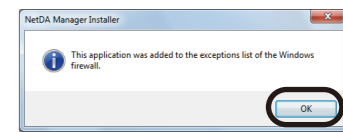
4. Read the SOFTWARE LICENSE AGREEMENT and click **Yes**.



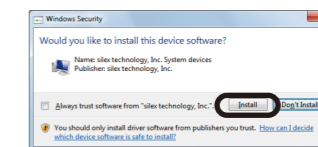
5. Click **Start** to begin the installation.



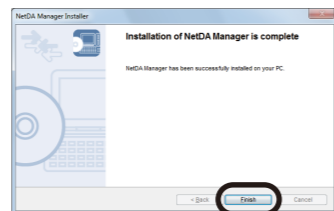
6. The completion screen for Windows firewall registration is displayed. Click **OK**.



\* In Windows Vista / Windows 7, the message below is displayed. Click **Install**.



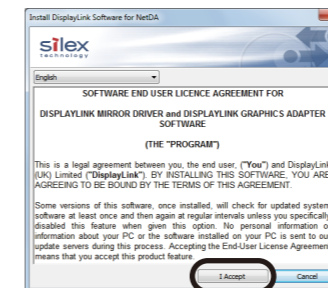
7. NetDA Manager has been installed. Click **Finish**.



8. Continue to install the Display Driver.

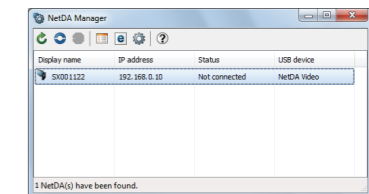
\* In Windows 7, the User Account Control screen is displayed. Click **Yes**.  
\* In Windows Vista, the User Account Control screen is displayed. Click **Continue**.

9. The Display Driver installer will start. Read the SOFTWARE END USER LICENSE AGREEMENT and click **I Accept**.



\* Depending on the operating system, the PC may need to be restarted. If a message appears saying that you need to restart the PC, click **Yes** to restart the PC.

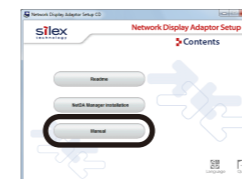
The necessary applications have been installed. NetDA Manager will automatically run.



Go on to **Step3** to configure SX-ND4050G.


## Accessing User Manual

- Insert the CD-ROM that came with SX-ND4050G into your PC.
- The Network Display Adaptor Setup CD screen is displayed. Click **Manual**.
- Click **SX-ND4050G**.
- The online manual will run.

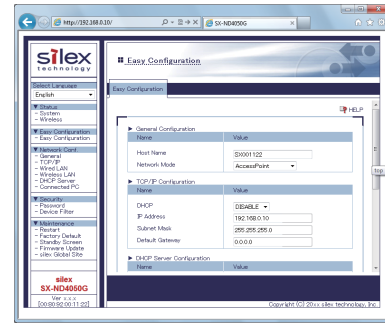


### Step 3 Setup

\* This setup guide describes how to use SX-ND4050G in access point mode as an example.  
For how to use SX-ND4050G in wireless mode (the mode to use SX-ND4050G as a wireless LAN station) or wired mode (the mode to connect SX-ND4050G via a network cable), please refer to the user's manual contained in the CD-ROM.

1. Select the SX-ND4050G that you wish to configure from NetDA Manager's main window and click the Web launch button(  ).
2. The Web configuration page is displayed. Click **Easy Configuration**.
3. The login dialog is displayed. Enter the user name (root) and password and click **OK**. (By default, no password is set.)

4. Configure the following settings. When finished, click **Submit**.



5. Select **OK** to restart SX-ND4050G for changes to take effect.

SX-ND4050G has been configured.  
Go on to **Step4** to connect SX-ND4050G to your network.

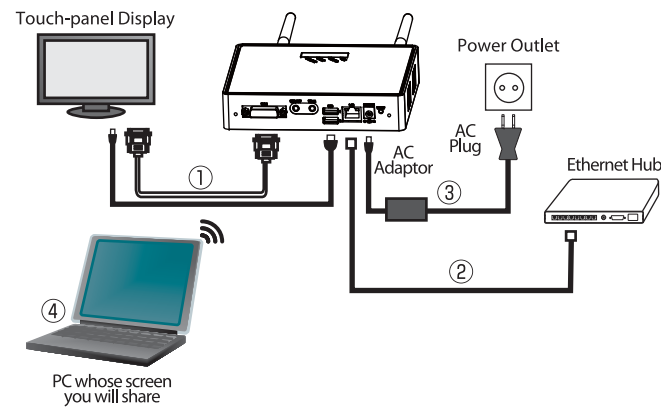
General	Network Mode	Select AccessPoint.
TCP/IP	DHCP	In the following cases, select <b>ENABLE</b> . - If you wish to obtain an IP Address automatically via DHCP. - If you wish to use the DHCP server feature of SX-ND4050G. In the following cases, select <b>DISABLE</b> . - If there is no DHCP server running on your network. - If you wish to assign an IP Address manually. - If you do not want to use the DHCP server feature of SX-ND4050G.
	IP Address	If you have selected <b>DISABLE</b> for <b>DHCP</b> above, set an IP Address for SX-ND4050G.
DHCP Server	DHCP Server Function	Select <b>DISABLE</b> if there is a DHCP server running on the network SX-ND4050G will be connected to. Select <b>ENABLE</b> if there is no DHCP server running on the network and you want SX-ND4050G to act as a DHCP server.
	Start IP Address End IP Address	If you have selected <b>ENABLE</b> for <b>DHCP Server Function</b> above, set the range of IP Addresses to be assigned to the PC.
Wireless LAN	SSID	Set the SSID of the wireless LAN SX-ND4050G will connect to. The SSID is an ID that logically distinguishes one wireless network from another. For wireless devices to communicate with each other, the SSIDs must match.
	Network Authentication	Select the network authentication mode that will be used to connect to the wireless devices. To ensure a secure network, it is recommended to use WPA/WPA2. For IEEE 802.11n, only AES can be used.

WEP	WEP	Enable/Disable WEP encryption. (ON/OFF)
	Key Index	Set the number of the WEP Key that you wish to use (1-4). The Key Index must be the same as that of the wireless devices you wish to connect to.
	WEP Key 1-4	Set the WEP key for WEP encryption. If the key input method is hexadecimal, enter a 10-digit value if the key size is 64bit or a 26-digit value if the key size is 128bit. If the key input method is alphanumeric characters, enter 5 characters if the key size is 64bit or 13 characters if the key size is 128bit.
WPA/WPA2	Encryption Mode	Select the encryption mode for WPA/WPA2/WPA MIX authentication. If the network authentication mode is WPA2, TKIP cannot be used.
	Pre-Shared Key	Set the Pre-Shared Key for TKIP/AES encryption. The Pre-Shared Key is a keyword used to create the encryption key. It is also referred to as 'network key' or 'password'. For 8-63 characters, enter an alphanumeric value and for 64 characters, enter a hexadecimal value. * The Pre-Shared Key must be the same as that of the wireless devices you wish to connect to.
Connected PC	PC 1	For PC 1, enter either the host name or IP Address of the PC that you wish to link to. If a keyboard is connected to SX-ND4050G, the PC registered as PC 1 will correspond to the [F1] key on the keyboard. The PC can be linked by pressing the [Ctrl]+[Shift]+[F1] keys. * To start or finish sharing the PC's screen using a keyboard, the following conditions must be met: - The PC is not in a standby mode. - NetDA Manager is running on the PC. * If this setting is configured, only the registered PC will be linked. To allow other PCs to be linked, refer to " <b>Filtering Computers Whose Screens Are Shared</b> " in the user's manual.

### Step 4

#### Connecting SX-ND4050G to the Network

\* This setup guide describes how to use SX-ND4050G in access point mode as an example. For how to use SX-ND4050G in wireless mode or wired mode, please refer to the user's manual contained in the CD-ROM.



\* For configuration of the touch-panel display, please refer to the operating manual that came with your touch-panel display.

1. The following items are required.



\* For the DVI cable, please use a Ferrite Core Cable.

2. Connect SX-ND4050G and the display via a DVI cable and/or USB cable. (①)
3. Connect SX-ND4050G to an Ethernet Hub via a network cable. (②)
4. Connect the AC adaptor to SX-ND4050G and plug it into a power outlet.(③)
5. Verify that the CONNECT LED (Green) blinks, the ALERT LED turns off and the LINK LED turns to Green or Red.  
  
\* The LINK LED will turn to Green when a wireless connection is established in 5GHz and to Red when in 2.4GHz, respectively. (By factory default, the wireless mode of SX-ND4050G is set to 5GHz.)
6. Power on the PC. (④)


SX-ND4050G has been connected to your network.  
Go on to **Step5** to get the PC ready for use with SX-ND4050G.

### Step 5

#### Getting the PC Ready to Share

<<Change the wireless settings on the PC whose screen you will share on the display>>

\* This setting is required only when using SX-ND4050G in access point mode. To use SX-ND4050G in wireless mode or wired mode, go on to <<Install the necessary applications on the PC whose screen you will share on the display>> to the right.

1. Click the network icon in the tasktray (  ).
2. Select the SSID for SX-ND4050G from the list and click **Connect**.



3. Enter the WEP Key (the Pre-Shared Key if the network authentication mode is WPA/WPA2/WPA MIX) configured to SX-ND4050G for **Security key** and click **OK**.





<<Install the necessary applications on the PC whose screen you will share on the display>>

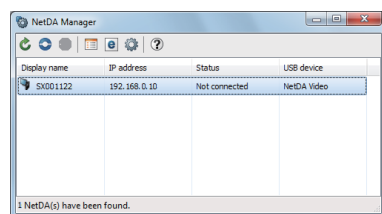
4. Install the applications on the PC. For how to install the applications, refer to **Step2**.

The PC is now ready to share its screen.  
Go on to **Step6** for how to use SX-ND4050G.

### Step 6 Using SX-ND4050G

<<Start to share the PC's screen on the display>>

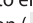
1. Start NetDA Manager by clicking the tasktray icon (  ) on the PC.  
  
\* If NetDA Manager is not running, click **Start - All Programs - NetDA Manager - NetDA Manager**.
2. NetDA Manager's main window appears and the network display adaptors running on the network are displayed in the list. Select the SX-ND4050G that you wish to link to and click the **Connect** button (  ).



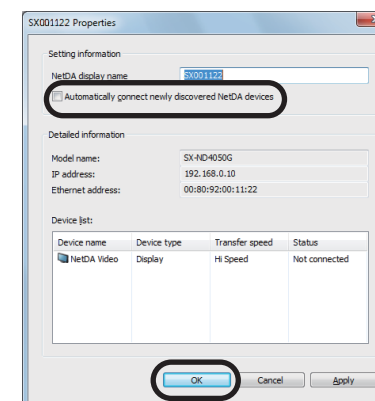
#### To automatically link to SX-ND4050G when the PC is powered on

By configuring the following setting, the PC will automatically link to SX-ND4050G when it is powered on. (Thus you do not have to select SX-ND4050G and click the **Connect** button manually on NetDA Manager's main window.)

\* Be careful with this setting. Once enabled, the PC's screen will always be shared on the display every time it is powered on. Do NOT forget your PC's screen may be seen by someone else in front of the display or otherwise you may be sharing what you did not intend to share.

1. From NetDA Manager's main window, select the SX-ND4050G for which you wish to enable the auto connect setting and click the properties button (  ).

2. In the properties window, check **Automatically connect newly discovered NetDA devices** and click **OK**.



#### Customer Support

**USA : silnex technology america, Inc.**  
E-mail : support@silnexamerica.com  
URL : http://www.silnexamerica.com/  
Phone : 1-866-765-8761

**Europe : silnex technology europe GmbH**  
E-mail : support@silnexeuropa.com  
URL : http://www.silnexeuropa.com/  
Phone : +49-(0)2151-65009-0

## Free Manuals Download Website

<http://myh66.com>

<http://usermanuals.us>

<http://www.somanuals.com>

<http://www.4manuals.cc>

<http://www.manual-lib.com>

<http://www.404manual.com>

<http://www.luxmanual.com>

<http://aubethermostatmanual.com>

Golf course search by state

<http://golfingnear.com>

Email search by domain

<http://emailbydomain.com>

Auto manuals search

<http://auto.somanuals.com>

TV manuals search

<http://tv.somanuals.com>