
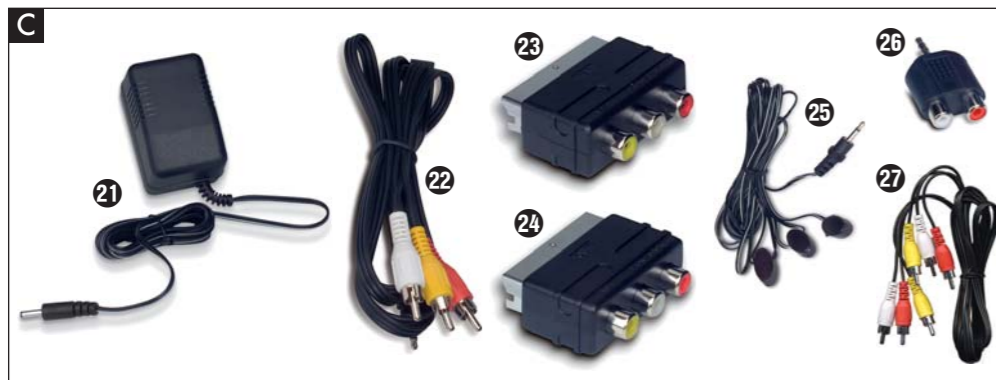
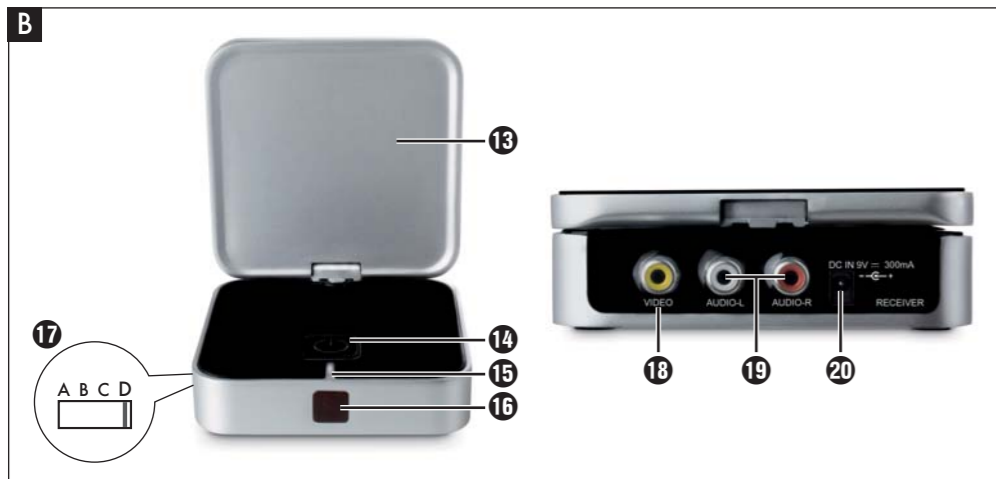
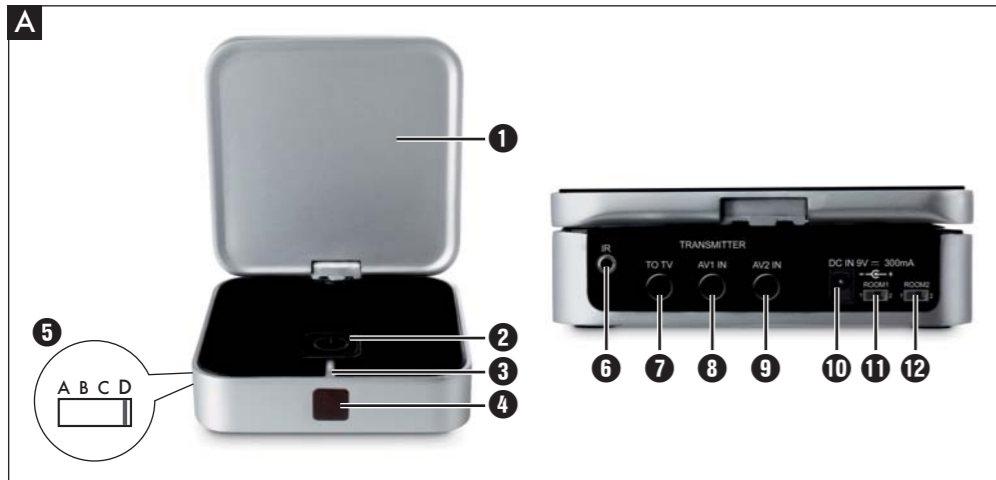
 **Radio Set**
 Operating instructions



EG-Konformitätserklärung gemäß dem Gesetz über Funkanlagen und Telekommunikationsendeinrichtungen (FTEG) und der Richtlinie 1999/5/EG (R&TTE)
EC-Declaration of Conformity in accordance with the Radio and Telecommunications Terminal Equipment Act (FTEG) and Directive 1999/5/EC (R&TTE Directive)

Hersteller / Verantwortliche Person
 Manufacturer / responsible person

Kompernaß GmbH
 Burgstraße 21
 44867 Bochum

erklärt, dass das Produkt
 declares that the product

Funkübertragungs-Set
 Radio Transmission Set

Type (ggf. Anlagenkonfiguration mit Angabe der Module): **KH 2131**
 Type (if applicable, configuration including the modules)

Telekommunikations(Tk-)endeinrichtung
 Telecommunications terminal equipment

Funkanlage
 Radio equipment

Verwendungszweck / Intended purpose

Übertragung von Audio und Video Signalen
 Transmission of audio and video signals

bei bestimmungsgemäßer Verwendung den grundlegenden Anforderungen des § 3 und den übrigen einschlägigen Bestimmungen des FTEG (Artikel 3 der R&TTE) entspricht.
complies with the essential requirements of §3 and the other relevant provisions of the FTEG (Article 3 of the R&TTE Directive), when used for its intended purpose.

Gesundheit und Sicherheit gemäß § 3 (1) 1. (Artikel 3 (1) a))
 Health and safety requirements pursuant to § 3 (1) 1. (Article 3 (1) a))

angewendete harmonisierte Normen
 Harmonised Standards applied

EN 60065: 2002 + A1: 2006 + A11: 2008
EN 50371: 2002

Schutzanforderungen in Bezug auf die elektromagnetische Verträglichkeit (§ 3 (1) 2, Artikel 3 (1) b)

Protection requirements concerning electromagnetic compatibility § 3(1)(2), (Article 3(1) b))

angewendete harmonisierte Normen
 Harmonised Standards applied

EN 301 489-1 V1.8.1
EN 301 489-3 V1.4.1

Maßnahmen zur effizienten Nutzung des Funkfrequenzspektrums
 Measures for the efficient use of the radio frequency spectrum

Luftschnittstelle bei Funkanlagen gemäß § 3(2) (Artikel 3(2))
 Air interface of the radio systems pursuant to § 3(2) (Article 3(2))

Angewendete harmonisierte Normen
 Harmonised standards applied

EN 300 220-2 V2.3.1
EN 300 440-2 V1.4.1

Ökodesign-Richtlinie 2009/125/EC
 Energy-related-Products Directive (ErP) 2009/125/EC

VO: 278/2009 & VO: 1275/2008

Bochum, 29.07.2010

Hans Kompernaß
 Geschäftsführer

Index

Introduction	2
Information for these operating instructions	2
Copyright	2
Intended use	2
Warnings	3
Safety	4
Basic Safety Instructions	4
Operating elements	5
Setting up and connecting	6
Safety instructions	6
Items supplied and transport inspection	6
Unpacking	6
Disposal of the packaging	7
Requirements on the Installation Location	7
Electrical connections	7
Handling and operation	8
Connecting the transmitter	9
Connecting the receiver	9
Channel setting	10
Operating the Radio Set	10
Cleaning	11
Storage/Disposal	11
Storage	11
Disposal of the device	11
Troubleshooting	12
Malfunction causes and remedies	12
Appendix	13
Technical data	13
Warranty	14
Service	14
Importer	14

Introduction

Information for these operating instructions

These operating instructions are a component of the Radio Set KH 2131 (henceforth designated as the device) and they provide you with important information about the intended use, safety, installation and connection as well as operation of the device.

These operating instructions must constantly be kept available close to the device. They are to be read and applied by everyone assigned to operate and troubleshoot the device.

Retain these operating instructions and pass them on with the device to any future owners.

Copyright

This documentation is copyright protected.

Any copying or reproduction, including as extracts, as well as the reproduction of images, also in an altered state, is not permitted without the express written consent of the manufacturer.

Intended use

This device is intended exclusively for the wireless transmission of audio, video and infrared signals in indoor areas. This product is for domestic use only and is not intended for commercial applications. This device is not intended for any other use or for uses beyond those mentioned.

Possible signal sources are, for example, VCRs, satellite receivers, DVB-T Receivers, CD/DVD player, etc.

WARNING

Risks from non-intended use!

Risks can be generated by the device if it used for unintended purposes and/or other types of use.

- ▶ Use the device exclusively for intended purposes.
- ▶ Observe the procedures described in these operating instructions.

Claims of any kind resulting from damage caused by improper use, incompetent repairs, unauthorized modifications or the use of non-approved spare parts are excluded.

The operator alone bears liability.

Warnings

In the existing operation instructions the following warnings are used:

DANGER

A warning at this danger level indicates a threateningly dangerous situation.

If the dangerous situation is not avoided, it could result in death or serious injury.

- ▶ Follow the instructions given in this warning notice to avoid the risks of death or serious injury to people.

WARNING

A warning of this danger level signifies a possible dangerous situation.

If the dangerous situation is not avoided it can lead to injuries.

- ▶ The directives in this warning are there to avoid personal injuries.

IMPORTANT

A warning of this danger level signifies possible property damage.

If the situation is not avoided it can lead to property damage.

- ▶ The directives in this warning are there to avoid property damage.

NOTICE

- ▶ A notice signifies additional information that assists in the handling of the device.

Safety

In this chapter you receive important safety information regarding the handling of the device.

This device complies with the statutory safety regulations.

Incorrect usage can, however, lead to personal injury and property damage.

Basic Safety Instructions

For safe handling of the device observe the following safety information:

- Before use check the device for visible external damage. Do not put into operation a device that is damaged or has been dropped.
- Damaged cables or connections should be replaced by authorized qualified persons or by the customer service department.
- Persons who, due to their physical, intellectual or motor abilities, are incapable of operating the device safely may only use the device under supervision or direction from a responsible person.
- Permit children to use the device ONLY under supervision.
- Repairs should only be carried out by authorized specialist companies or by the Customer Service department. Incompetent repairs can result in significant risks for the user. In addition warranty claims become void.
- A repair to the device during the warranty period may only be carried out by a Customer Service department authorised by the manufacturer, otherwise no additional warranty claims can be considered for subsequent damages.
- Defective components may only be replaced with original replacement parts. Only by using original replacement parts can you guarantee that the safety requirements are complied with.
- Protect the device from moisture and liquid penetration. Never submerge the device in water, never locate the device in the close vicinity of water and never place any objects filled with liquids (such as vases) on the device.
- Do not place any objects on the device.
- Do not operate the device close to open flames (e.g. candles).
- Avoid direct solar radiation.
- In the event of a defect occurring or a thunderstorm approaching, remove the plug from the mains power socket.

Operating elements

Figure A: Transmitter

- ① Antenna
- ② On/Off switch
- ③ LED operation indicator
- ④ Infrared receiver
- ⑤ Channel selector switch (underside of the device)
- ⑥ IR: Connection for infrared transmission diode cable
- ⑦ TO TV: Output for a TV
- ⑧ AV1 IN: Audio/Video Input 1
- ⑨ AV2 IN: Audio/Video Input 2
- ⑩ DC IN: Connection socket for power adapter
- ⑪ ROOM 1: Switching signal source transmitter
- ⑫ ROOM 2: Switching signal source receiver

Figure B: Receiver

- ⑬ Antenna
- ⑭ On/Off switch
- ⑮ LED operation indicator
- ⑯ Infrared receiver
- ⑰ Channel selector switch (underside of the device)
- ⑱ VIDEO: Video Output
- ⑲ AUDIO L/R: Audio outputs
- ⑳ DC IN: Connection socket for power adapter

Figure C: Accessories

- ㉑ Power adapter (2 x)
- ㉒ Cinchplug - Jackplug Cable (2 x)
- ㉓ Scart to Cinch Adapter IN (Receiver)
- ㉔ Scart to Cinch Adapter OUT (Transmitter)
- ㉕ Infrared transmission diode cable
- ㉖ Audio Adapter (3.5 mm stereo jackplug on cinch sockets)
- ㉗ Cinch to Cinch Cable

Setting up and connecting

Safety instructions

WARNING

Damage may occur to people and property when operating the device!

Observe the following safety information to avoid any risks:

- ▶ Packaging material may not be used as a play thing.
There is a risk of suffocation!
- ▶ To avoid risks to persons and property, pay heed to the requirements for the installation site and for the electrical connection.

Items supplied and transport inspection

The device is delivered with the following components as standard:

- 1 Radio Transmission Set (1 x transmitter, 1 x receiver)
- 2 Power adapters
- 1 Scart to Cinch Adapter IN (Receiver)
- 1 Scart to Cinch Adapter OUT (Transmitter)
- 1 Cinch to Cinch cable, (3 core)
- 2 Cinchplug to Jackplug Cables, (3.5 mm Stereo-Jackplug)
- Infrared transmission diode cable (3 diodes)
- 3 Adhesive pads for the infrared transmitter diodes
- Audio Adapter (3.5 mm stereo jackplug on cinch sockets)
- Operating instructions

NOTICE

- ▶ Check the contents to make sure everything is there and for visible damage.
- ▶ If the items supplied are incomplete, or damaged due to defective packaging or transportation, contact the Service Hotline (see chapter **Service**).

Unpacking

- ◆ Remove all parts of the device and the operating instructions from the box.
- ◆ Remove all packing material.

Disposal of the packaging

The packaging protects the device from transport damage. The packaging materials are selected from the point of view of their environmental friendliness and disposal technology and are therefore recyclable.



The recirculation of packaging into the material circuit saves on raw material and reduces generated waste. Dispose of packaging material that is no longer needed according to the regionally established regulations.

NOTICE

- If possible preserve the device's original packaging during the warranty period so that in the case of a warranty claim you can package the device properly for return.

Requirements on the Installation Location

For the safe and error-free operation of the device, the installation location must fulfill the following conditions:

- Place the device on a firm, flat and level surface.
- Do not locate the device in a hot, wet or very humid environment or close to flammable material.
- The surfaces of furniture may contain components that could attack and weaken the rubber pads of the device. If necessary, place an anti-slip mat or similar under the rubber pads of the device.
- The mains power socket must at all times be easily accessible, so that the power adapter can be easily and quickly removed if necessary.

Electrical connections

- Before connecting up, compare the connection data (voltage and frequency) on the type plate of the device with that of your power supply network. This data must tally in order to avoid damage to the device.
- Check to ensure that the power cable of the device is undamaged and that it will not be laid over hot surfaces and/or sharp edges.
- Ensure that the power cable is not over taut or crimped/folded.
- Do not let the power cable hang over edges (trip wire effect).

NOTICE

- It is recommended that, in addition to switching the radio transmission set off, you disconnect the power adapter from the mains power supply or use switchable power strips. Only in this way can it be ensured that the device is fully switched off and a contribution made to the economical use of power.

Handling and operation

In this chapter you receive important information for the handling and operation of the device.

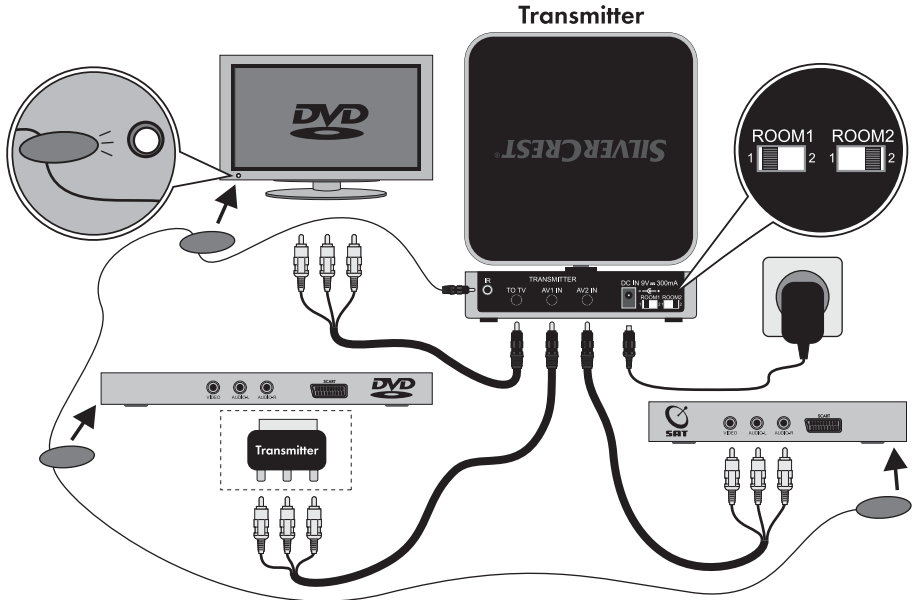


Fig. Connection example for Transmitter

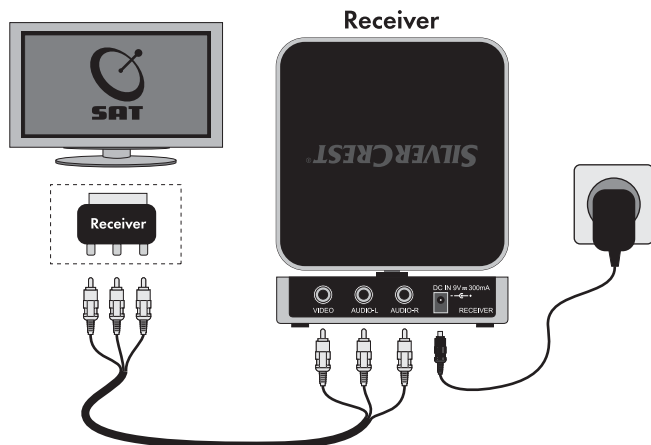


Fig. Connection example for Receiver

Connecting the transmitter

- ◆ Insert the jackplug of the cinchplug - jackplug cable 22 in the AV1 IN socket 8 of the transmitter.
- ◆ Connect the cinch plug of the cinchplug - jackplug cable 22 to the signal source, for example, a DVD player. Pay heed to the colour coding. If the signal source makes the output signals available to you via a Scart output, use also the Scart to cinchplug adapter OUT (Transmitter) 24.
- ◆ If need be, you can connect a second signal source to the transmitter. For this, use the socket AV2 IN 9.

NOTICE

- ▶ If, despite an occupied A/V output, you wish to additionally connect the used signal source to a TV, connect the TV with the transmitter via the socket TO TV 7. To do this, use either one of the supplied cinchplug - jackplug cables 22, or an identical cable from a dealer (see Figure Connection example transmitter).
- ◆ Connect the infrared transmission diode cable 25 to the socket IR 6 of the transmitter.
- ◆ Aim one of the three transmitter diodes at the device to be remotely controlled. Attach the transmitter diode at an appropriate location using the supplied double-sided adhesive pads. The transmitting diode should be affixed immediately adjacent to the IR receiving diode on your device (see Fig. Connection example Transmitter).
- ◆ Connect one of the power adapters to the DC IN 10 socket of the transmitter and then plug it into a properly installed mains power socket.
- ◆ Unfold the transmission antenna 1 and point it in the direction of the receiver.

Connecting the receiver

- ◆ Connect the video output 18 and the audio outputs 19 to the target device, e.g. a television. For this, use the supplied Cinch to Cinch cable 27. Pay heed to the colour coding. If the target device has a Scart input, use additionally the Scart - Cinch adapter IN (Receiver) 23.
- ◆ Connect one of the power adapters to the DC IN 20 socket of the receiver and then plug it into a properly installed mains power socket.
- ◆ Unfold the transmission antenna 13 and point it in the direction of the transmitter.

NOTICE

- ▶ Two signal sources can be connected to the radio transmission set. The signal to be transmitted can be selected with the switch ROOM 1 **11** resp. ROOM 2 **12** on the back of the transmitter.
- ▶ To switch over, for example, the signal source AV1 for a TV connected to the transmitter, place the switch ROOM 1 **11** at the position 1 (see Fig. Connection example Transmitter).
- ▶ To switch over, for example, the signal source AV2 for a TV connected to the receiver, place the switch ROOM 2 **12** at the position 2 (see Fig. Connection example Transmitter and Connection example Receiver).

Channel setting

You can operate up to four radio transmission sets at one location.

When using multiple radio transmission sets, they must be set to different channels.

The transmitter and receiver of each radio transmission set must be set to the same channel for a successful transfer.

- ◆ Select a channel (A/B/C/D) with the channel selector switch **5** on the transmitter.
- ◆ Select the same channel with the channel selector switch **17** on the receiver.

Operating the Radio Set

- ◆ Switch the transmitter on by pressing the On/Off switch **2**.
- ◆ Switch the signal source on, for example, a DVD player, and, if necessary, start playback.
- ◆ Switch the receiver on by pressing the On/Off switch **14**.
- ◆ Switch the target device on, for example, a TV, and activate the A/V input to which you have connected the receiver.

The radio transmission should now function.

NOTICE

- ▶ The device transmits the audio/video signals in the 2.4 GHz frequency range. Take note that, in the 2.4 GHz frequency range, there is no general protection against listening in or viewing.

Cleaning

DANGER

Risk of fatal electrocution!

- ▶ Remove the power adapter from the mains power socket before beginning with cleaning.

IMPORTANT

Damage to the device!

- ▶ Make sure when you are cleaning the device that no moisture gets inside in order to avoid irreparable damage to it.
- Clean the surfaces of the device with a soft, dry cloth.

Storage/Disposal

Storage

If you do not intend to use the device for a longer time, unplug it from the mains power socket and store it in a clean, dry place away from direct sunlight.

Disposal of the device



Do not dispose of the device in your normal domestic waste. This product is subject to the provisions of European Directive 2002/96/EC.

Dispose of the device through an approved disposal centre or at your community waste facility. Observe the currently applicable regulations. In case of doubt, please contact your waste disposal centre.

Troubleshooting

⚠ WARNING

► Repairs to electronic devices may only be carried out by specialists who have been trained by the manufacturer. Considerable danger to the consumer and damage to the device can occur as a result of incorrect repairs.

Malfunction causes and remedies

Defect	Possible cause	Solution
No audio/video transmission	The transmitter or receiver is not switched on.	Switch the transmitter or receiver on with the On/Off switch 2 resp. 14 .
	The signal source (e.g. DVD player) is not switched on	Switch the signal source on and, if necessary, start playback.
	The transmitter and receiver are not adjusted to the same channel.	Select the same channel on the transmitter and receiver with the channel selector switch 5 resp. 17 .
	The transmitter or receiver are not connected properly.	Check the Cinch and AV connections on the connected devices as well as on the transmitter and the receiver.
	The transmission range is reduced because of thick walls or ceilings.	Reduce the distance between the transmitter and the receiver.
Poor transfer quality	The transmitter and receiver are not aligned with each other.	Change the alignment of the transmitting antenna 1 resp. 13 .
	There are possibly other radio devices in use on the same frequency.	Change the channel setting on the transmitter and receiver. Ensure that the transmitter and the receiver have the same channel setting.
Disruptions in remote control commands	The infrared transmitting diode blocks the signal source of the infrared receiver.	Affix the infrared transmitting diode slightly offset to the signal source of the infrared receiver.

NOTICE

► If you cannot solve the problem with the aforementioned methods, please contact Customer Service.

Appendix

Technical data

Power Adapter

Manufacturer	Dongguan Gaoyi Electronic Co. Ltd.
Model	RSS1002-027090-W3U
Input	100-240 V, 50/60 Hz, 0.2 A
Output	9 V \equiv , 0.3 A
Protection class	II \square
Weight	75 g approx.

Transmitter

Power supply	9 V \equiv , 0.3 A
4 Channel Frequency Range A/V	2.400 GHz - 2.4835 GHz
Range (free field)	max. 100 m
Video input	1 V p-p
Audio input	2.8 V p-p
Operating temperature	+5 - +40°C
Humidity (no condensation)	5 - 90 %
Dimensions	10 x 10 x 3,2 cm
Weight	168 g approx.

Receiver

Power supply	9 V \equiv , 0.3 A
4 Channel Frequency Range A/V	2.400 GHz - 2.4835 GHz
Frequency infrared signal	433 MHz
Video output	1 V p-p
Audio output	2.8 V p-p
Operating temperature	+5 - +40°C
Humidity (no condensation)	5 - 90 %
Dimensions	10.6 x 10 x 3.2 cm
Weight	164 g approx.

Warranty

You receive a 3-year warranty for this device as of the purchase date. The device has been manufactured with care and meticulously examined before delivery.

Please retain your receipt as proof of purchase. In the case of a warranty claim, please make contact by telephone with our Service Department. Only in this way can a post-free despatch for your goods be assured.

NOTICE

- The warranty covers only claims for material and manufacturing defects, not for transport damages, worn parts or for damage to fragile components, e.g. buttons or switches.

This product is for private use only and is not intended for commercial applications. In the event of misuse and improper handling, use of force and interference not carried out by our authorized service branch, the warranty will become void..

This warranty does not affect your statutory rights.
The warranty period is not extended by repairs effected under warranty.
This applies also to replaced and repaired parts.

Damages or defects discovered after purchase are to be reported directly after unpacking, at the latest two days after the purchase date.

Repairs carried out after the lapse of the warranty period are subject to charge.

Service

GB DES UK LTD

Tel.: 0871 5000 700 (£ 0.10 / minute)

e-mail: support.uk@kompernass.com

IE Kompernass Service Ireland

Tel: 1850 930 412 (0,082 EUR/Min.)

Standard call rates apply. Mobile operators may vary.

e-mail: support.ie@kompernass.com

Importer

KOMPERNASS GMBH

BURGSTRASSE 21

44867 BOCHUM, GERMANY

www.kompernass.com

Free Manuals Download Website

<http://myh66.com>

<http://usermanuals.us>

<http://www.somanuals.com>

<http://www.4manuals.cc>

<http://www.manual-lib.com>

<http://www.404manual.com>

<http://www.luxmanual.com>

<http://aubethermostatmanual.com>

Golf course search by state

<http://golfingnear.com>

Email search by domain

<http://emailbydomain.com>

Auto manuals search

<http://auto.somanuals.com>

TV manuals search

<http://tv.somanuals.com>