

Attachment Illustrated Parts List



ATTACHMENT

Mfg. No.	Description
1691978	36" Tiller
1693578	36" Tiller

Simplicity
MANUFACTURING, INC.

500 N Spring Street / PO Box 997
Port Washington, WI 53074-0997 USA

© Copyright 2001 Simplicity Manufacturing, Inc. All Rights Reserved.

Rev. 10/2001

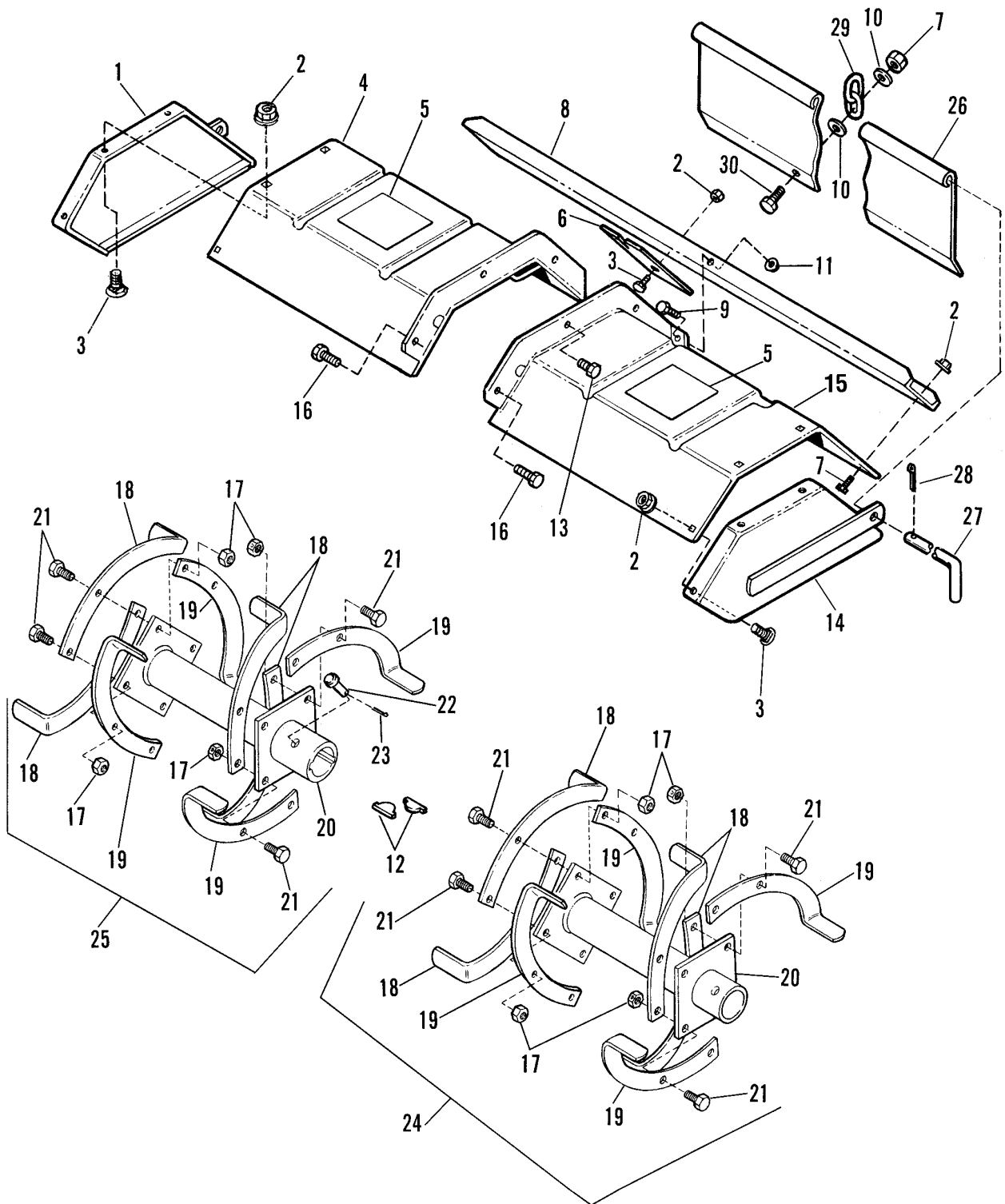
TP 400-2373-01-AT-SMA



36" Tine & Deflector Group

984363

NOTE: Unless noted otherwise,
use the standard hardware torque
specification chart.



The above parts group applies to the following Mfg. Nos.:

- 1691978 36" Tiller
- 1693578 36" Tiller

36" Tine & Deflector Group

REF NO.	PART NO.	QTY.	DESCRIPTION
1	1707990	1	PLATE, End, R.H.
2	1927557	15	LOCKNUT, Flange, 5/16-18
3	1931332	8	CARRIAGE BOLT, 5/16-18 x 5/8
4	105369	1	DEFLECTOR ASSEMBLY, R.H.
5	1679700	2	DECAL, Safety
6	105354	1	SHIELD
7	1930642	1	NUT, Hex Head, Flange, 1/4-20
8	1707938	1	CHANNEL
9	1921210	2	CAPSCREW, Hex Head, 3/8-16 x 1
10	1960353	2	WASHER
11	1930645	2	NUT, Hex, Flange, 3/8-16
12	105337	4	KEY
13	1933260	2	SCREW, Hex, Whizlock, 3/8-16 x 3/4
14	1707991	1	PLATE, End, L.H.
15	105370	1	DEFLECTOR ASSEMBLY, L.H.
16	1934654	4	CAPSCREW, Hex, Whizlock, 3/8-16 x 1
17	1928867	16	LOCKNUT, 7/16-20
18	105376	8	BLADE, Tine, R.H.
19	105375	8	BLADE, Tine, L.H.
20	1651504	2	HUB & PLATE ASSEMBLY
21	1920353	16	CAPSCREW, Hex Head, 7/16-20 x 1-1/2
22	105249	2	PIN
23	1918451	2	PIN, Cotter
24	1650461	1	BLADE ASSEMBLY, L.H.
25	1650460	1	BLADE ASSEMBLY, R.H.
26	1707945	1	DEFLECTOR
27	1707939	1	ROD
28	1918448	1	PIN, Cotter
29	1707951	1	CHAIN
30	1924009	1	CAPSCREW, Hex Head, 1/4-20 x 7/8

Footnotes:

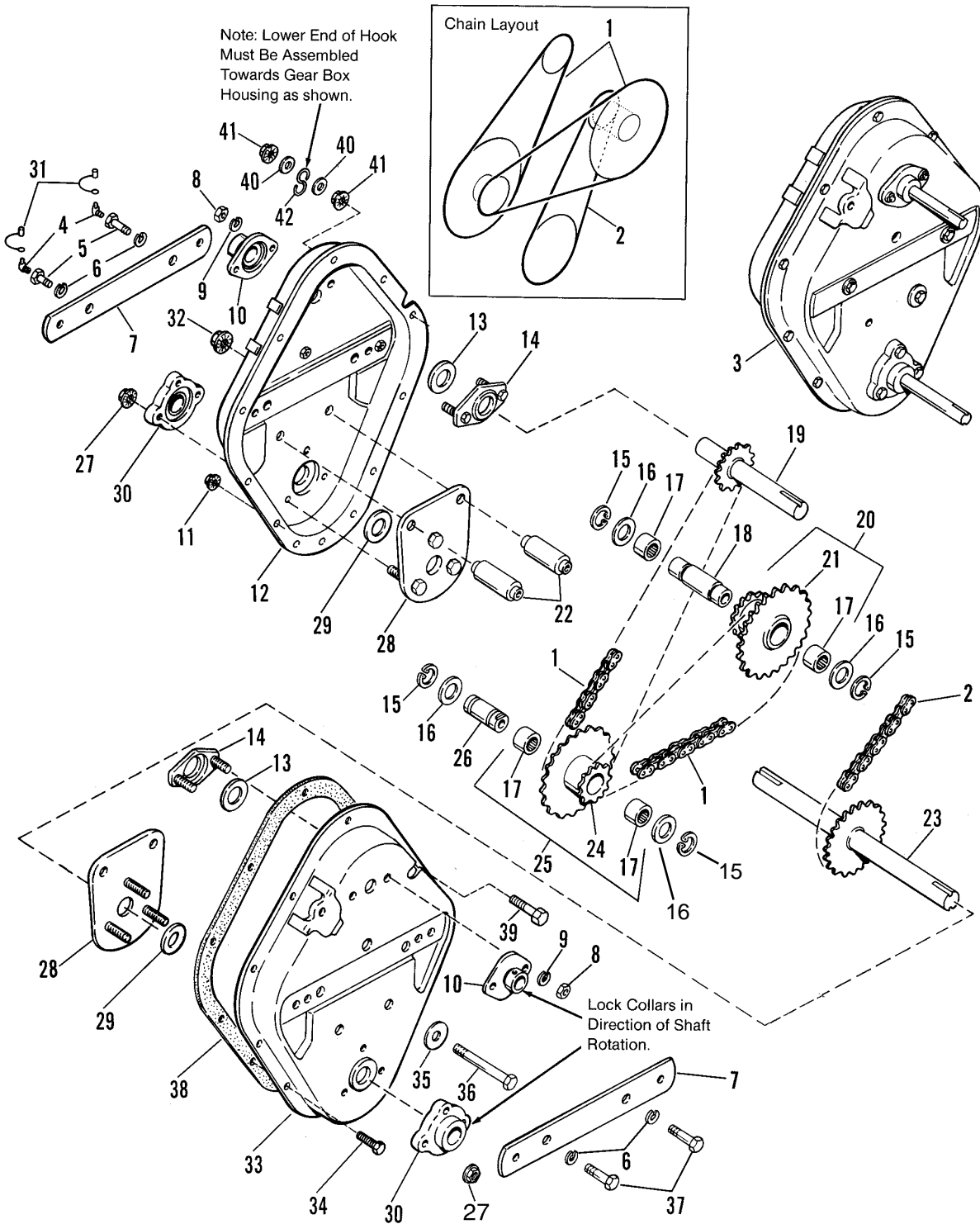
The above parts group applies to the following Mfg. Nos.:

1691978 36" Tiller
1693578 36" Tiller

36" Housing Group

984364

NOTE: Unless noted otherwise, use the standard hardware torque specification chart.



The above parts group applies to the following Mfg. Nos.:

- 1691978 36" Tiller
- 1693578 36" Tiller

36" Housing Group

REF NO.	PART NO.	QTY.	DESCRIPTION
1	105336	2	CHAIN, # 40
2	178174	1	CHAIN, # 50
3	1650841	1	TRANSMISSION SUB ASSEMBLY (Incl. Ref. Nos. 1-16, 18-38 on this page) & Incls. Ref. Nos. 1-5,7,11,17,18,19,34,36 & 38 in the 36" Tiller Drive Group)
4	915019	2	FITTING, Grease
5	105132	2	BOLT, Hex Head, Drilled & Tapped
6	1916966	4	LOCKWASHER, 1/2
7	105320	2	BAR, Side
8	1917372	4	NUT, Hex, 5/16-1
9	1917356	4	LOCKWASHER, 5/16
10	1669337	2	BEARING
11	1923362	13	LOCKNUT, 5/16-18
12	105366	1	CASE ASSEMBLY, Half, R.H.
13	105365	2	SEAL
14	1669338	2	PLATE ASSEMBLY, Upper Bearing
15	927320	4	RING, Retaining
16	960208	4	WASHER, 1
17	105195	4	BEARING, Roller
18	105192	1	SPACER, Inter.
19	105298	1	SHAFT ASSEMBLY, Pulley
20	1650975	1	SPROCKET & BEARING ASSEMBLY, (Incl. Ref. Nos. 17 & 21)
21	*	1	SPROCKET ASSEMBLY, (See Ref. No. 20)
22	105360	2	SPACER
23	178177	1	SHAFT ASSEMBLY, Tine
24	*	1	SPROCKET (See Ref. No. 25)
25	1650976	1	SPROCKET & BEARING ASSEMBLY, (Incl. Ref. Nos. 17 & 24)
26	105292	1	SPACER, Internal
27	1930651	6	LOCKNUT, Hex, Jam, 3/8-16
28	1669298	2	PLATE ASSEMBLY
29	105357	2	SEAL
30	105309	2	BEARING
31	105363	2	CAP, Grease
32	1930644	2	LOCKNUT, Flange, 1/2-13
33	105367	1	CASE ASSEMBLY, Half, L.H.
34	1925205	13	CAPSCREW, Hex Head, 5/16-18 x 5/8
35	1918431	1	WASHER, 1/2
36	1926158	1	CAPSCREW, Hex Head, 1/2-13 x 4
37	1929528	2	CAPSCREW, Hex Head, 1/2-20 x 1
38	105373	1	GASKET
39	1921977	1	CAPSCREW, Hex Head, 5/16-1 8 x 1-1 /4
40	1924940	2	WASHER, 3/8
41	1935048	2	LOCKNUT, Flange, 5/16-18
42	1707985	1	HOOK, "S"

Footnotes:

* Not a servicable part.

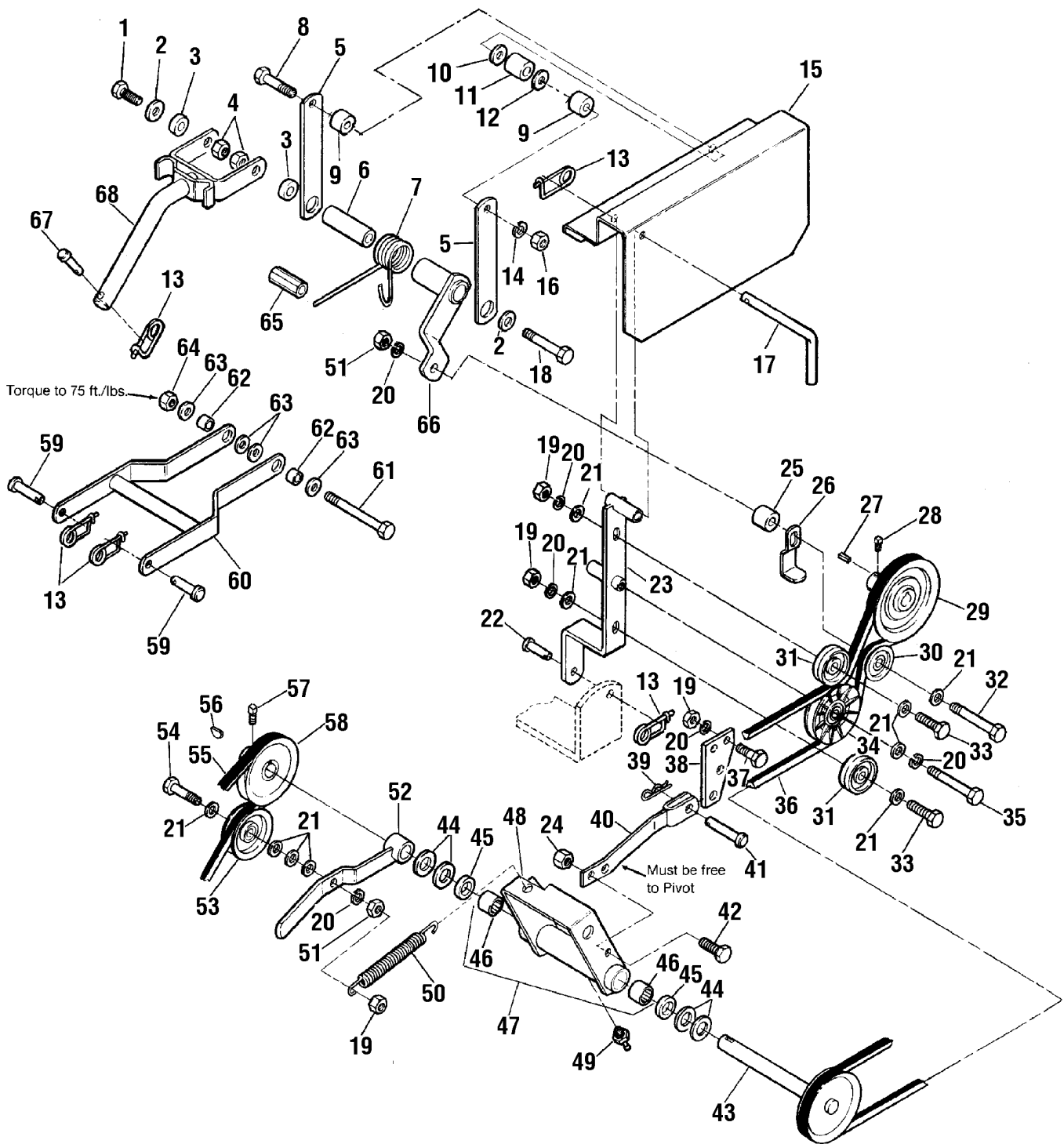
The above parts group applies to the following Mfg. Nos.:

1691978 36" Tiller
1693578 36" Tiller

36" Drive Group

984262

NOTE: Unless noted otherwise,
use the standard hardware torque
specification chart.



The above parts group applies to the following Mfg. Nos.:

- 1691978 36" Tiller
- 1693578 36" Tiller

36" Drive Group

REF NO.	PART NO.	QTY.	DESCRIPTION
1	923471	1	CAPSCREW, Hex Head, 7/16-14 x 1-1/4
2	1925125	2	WASHER, 3/8
3	105346	2	SPACER
4	1930650	2	LOCKNUT, Flange, 7/16-14
5	105359	2	SUPPORT
6	105339	1	SPACER
7	1707593	1	SPRING, Torsion
8	1923141	1	CAPSCREW, Hex Head, 5/16-18 x 2-3/4
9	1704716	2	SPACER
10	960171	1	WASHER, Nylon
11	1666106	1	BUSHING
12	1919326	1	WASHER, 5/16
13	176012	5	RETAINER PIN
14	1917356	1	LOCKWASHER, 5/16
15	1707564	1	GUARD, Belt
16	1917372	1	NUT, Hex, 5/16-18
17	1657562	1	ROD, Pivot
18	1930585	1	CAPSCREW, Hex Head, 7/16-14 x 3-1/2
19	916950	6	NUT, Hex, 3/8-16
20	916965	7	LOCKWASHER, 3/8
21	1924940	10	WASHER, 3/8
22	1708298	1	PIN
23	1708961	1	ARM SUPPORT ASSEMBLY
24	1923362	1	NUT, Hex, Centerlock, 5/16-18
25	1669999	1	SPACER
26	1708352	1	GUARD, Spring
27	157427	1	KEY
28	1960474	1	SETSCREW, 3/8-16 x 1/2
29	1706342	1	PULLEY
30	1721133	1	PULLEY, Idler
31	1706511	2	PULLEY, Idler
32	1921973	1	CAPSCREW, Hex Head, 3/8-16 x 2-3/4
33	1921971	2	CAPSCREW, Hex Head, 3/8-16 x 1-3/4
34	1706510	1	PULLEY, Idler
35	1920415	1	CAPSCREW, Hex Head, 3/8-16 x 1-1/4
36	1706512	1	V-BELT
37	1921210	2	CAPSCREW, Hex Head, 3/8-16 x 1
38	1707265	1	ANCHOR, Jackshaft
39	1960033	1	CLIP
40	1706344	1	ANCHOR ASSEMBLY
41	1960116	1	PIN
42	1921333	1	CAPSCREW, Hex Head, 5/16-18 x 1
43	1706362	1	PULLEY ASSEMBLY
44	1960160	4	WASHER, 3/4
45	1611789	2	SEAL

Footnotes:

Item 31 only used with gear models.

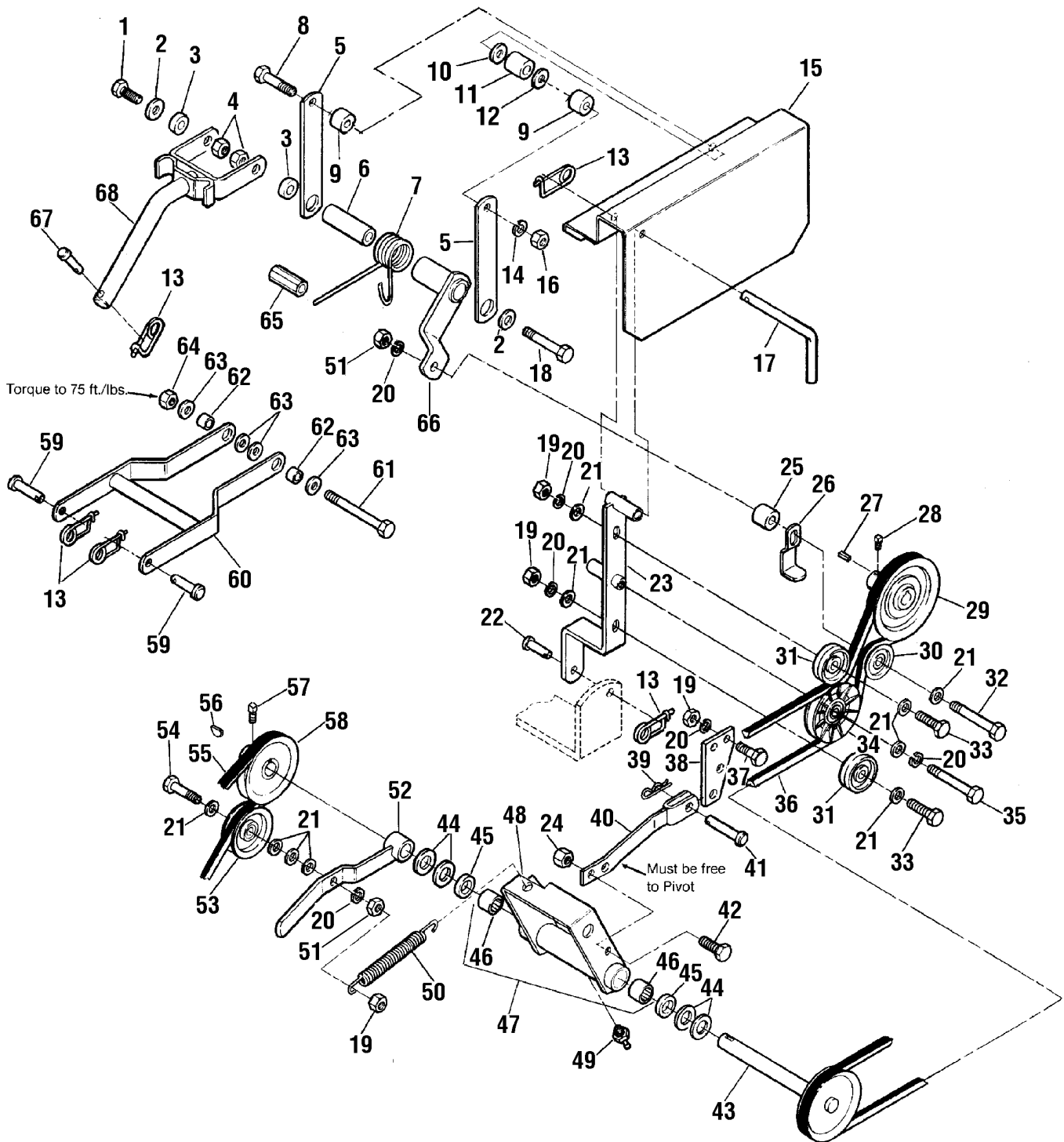
The above parts group applies to the following Mfg. Nos.:

1691978 36" Tiller
1693578 36" Tiller

36" Drive Group

984262

NOTE: Unless noted otherwise,
use the standard hardware torque
specification chart.



The above parts group applies to the following Mfg. Nos.:

- 1691978 36" Tiller
- 1693578 36" Tiller

36" Drive Group

REF NO.	PART NO.	QTY.	DESCRIPTION
46	171186	2	BEARING
47	1708180	1	CLEVIS ASSEMBLY, w/Bearings (incl. Ref. Nos. 48 & 46)
48	*	1	CLEVIS ASSEMBLY, (See Ref. No. 47)
49	912808	1	FITTING, Lube
50	159159	1	SPRING, Extension
51	1960251	2	NUT, Hex, Centerlock, 3/8-16
52	1706508	1	ARM ASSEMBLY, Idler
53	1657712	1	PULLEY, Idler
54	1923701	1	CAPSCREW, Hex Head, 3/8-16 x 2
55	1700059	1	V-BELT
56	960403	1	KEY
57	1928721	1	SETSCREW, 5/16-18
58	1706343	1	PULLEY ASSEMBLY
59	155037	2	PIN
60	1651844	1	FRAME ASSEMBLY
61	1926159	1	CAPSCREW, Hex Head, 1/2-13 x 5
62	105386	2	SPACER
63	1924361	4	WASHER, 1/2
64	1930644	1	LOCKNUT, 1/2-13
65	1707599	1	ANCHOR, Spring
66	105295	1	LEVER ASSEMBLY, Clutch
67	118053	1	PIN
68	1707569	1	LIFT ASSEMBLY

Footnotes:

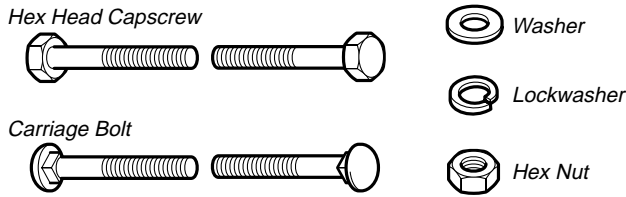
* Not a servicable part.

The above parts group applies to the following Mfg. Nos.:

1691978 36" Tiller
1693578 36" Tiller

Hardware Identification & Torque Specifications

Common Hardware Types

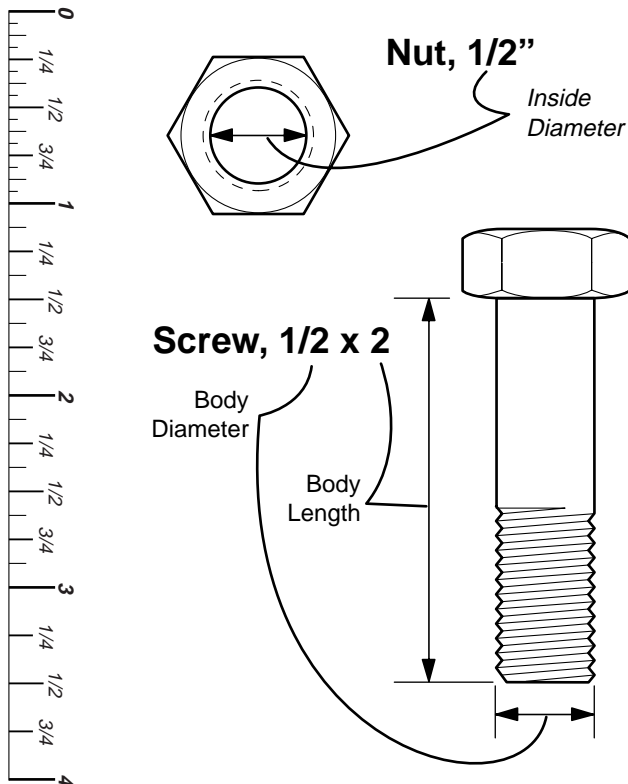


Standard Hardware Sizing

When a washer or nut is identified as **1/2"**, this is the *Nominal size*, meaning the *inside diameter* is 1/2 inch; if a second number is present it represent the *threads per inch*

When bolt or capscrew is identified as **1/2 - 16 x 2"**, this means the *Nominal size*, or *body diameter* is 1/2 inch; the second number represents the *threads per inch* (16 in this example, and the final number is the *body length* of the bolt or screw (in this example 2 inches long).

The guides and ruler furnished below are designed to help you select the appropriate hardware and tools.



Torque Specification Chart

FOR STANDARD MACHINE HARDWARE (Tolerance ± 20%)

Hardware Grade	No Marks		SAE Grade 2		SAE Grade 5		SAE Grade 8	
	in/lbs	Nm.	in/lbs	Nm.	in/lbs	Nm.	in/lbs	Nm.
8-32	19	2.1	30	3.4	41	4.6		
8-36	20	2.3	31	3.5	43	4.9		
10-24	27	3.1	43	4.9	60	6.8		
10-32	31	3.5	49	5.5	68	7.7		
1/4-20	66	7.6	8	10.9	12	16.3		
1/4-28	76	8.6	10	13.6	14	19.0		
5/16-18	11	15.0	17	23.1	25	34.0		
5/16-24	12	16.3	19	25.8	27	34.0		
3/8-16	20	27.2	30	40.8	45	61.2		
3/8-24	23	31.3	35	47.6	50	68.0		
7/16-14	30	40.8	50	68.0	70	95.2		
7/16-20	35	47.6	55	74.8	80	108.8		
1/2-13	50	68.0	75	102.0	110	149.6		
1/2-20	55	74.8	90	122.4	120	163.2		
9/16-12	65	88.4	110	149.6	150	204.0		
9/16-18	75	102.0	120	163.2	170	231.2		
5/8-11	90	122.4	150	204.0	220	299.2		
5/8-18	100	136	180	244.8	240	326.4		
3/4-10	160	217.6	260	353.6	386	525.0		
3/4-16	180	244.8	300	408.0	420	571.2		
7/8-9	140	190.4	400	544.0	600	816.0		
7/8-14	155	210.8	440	598.4	660	897.6		
1-8	220	299.2	580	788.8	900	1,244.0		
1-12	240	326.4	640	870.4	1,000	1,360.0		

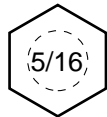
NOTES

- These torque values are to be used for all hardware excluding: locknuts, self-tapping screws, thread forming screws, sheet metal screws and socket head setscrews.
- Recommended seating torque values for locknuts:
 - for prevailing torque locknuts - use 65% of grade 5 torques.
 - for flange whizlock nuts and screws - use 135% of grade 5 torques.
- Unless otherwise noted on assembly drawings, all torque values must meet this specification.

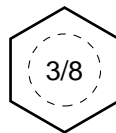
Wrench & Fastener Size Guide



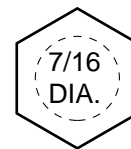
1/4" Bolt or Nut
Wrench—7/16"



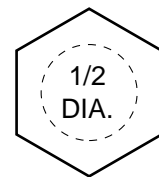
5/16" Bolt or Nut
Wrench—1/2"



3/8" Bolt or Nut
Wrench—9/16"



7/16" Bolt or Nut
Wrench (Bolt)—5/8"
Wrench (Nut)—11/16"



1/2" Bolt or Nut
Wrench—3/4"

Free Manuals Download Website

<http://myh66.com>

<http://usermanuals.us>

<http://www.somanuals.com>

<http://www.4manuals.cc>

<http://www.manual-lib.com>

<http://www.404manual.com>

<http://www.luxmanual.com>

<http://aubethermostatmanual.com>

Golf course search by state

<http://golfingnear.com>

Email search by domain

<http://emailbydomain.com>

Auto manuals search

<http://auto.somanuals.com>

TV manuals search

<http://tv.somanuals.com>