

ATTACHMENT ILLUSTRATED PARTS LIST



ATTACHMENT

Mfg. No. Description
1694304 Turbo - 38", 44" & 50" Mower



MANUFACTURING, INC.
500 N Spring Street / PO Box 997
Port Washington, WI 53074-0997 USA

www.simplicitymfg.com
© Copyright 2002 Simplicity Manufacturing, Inc. All Rights Reserved.

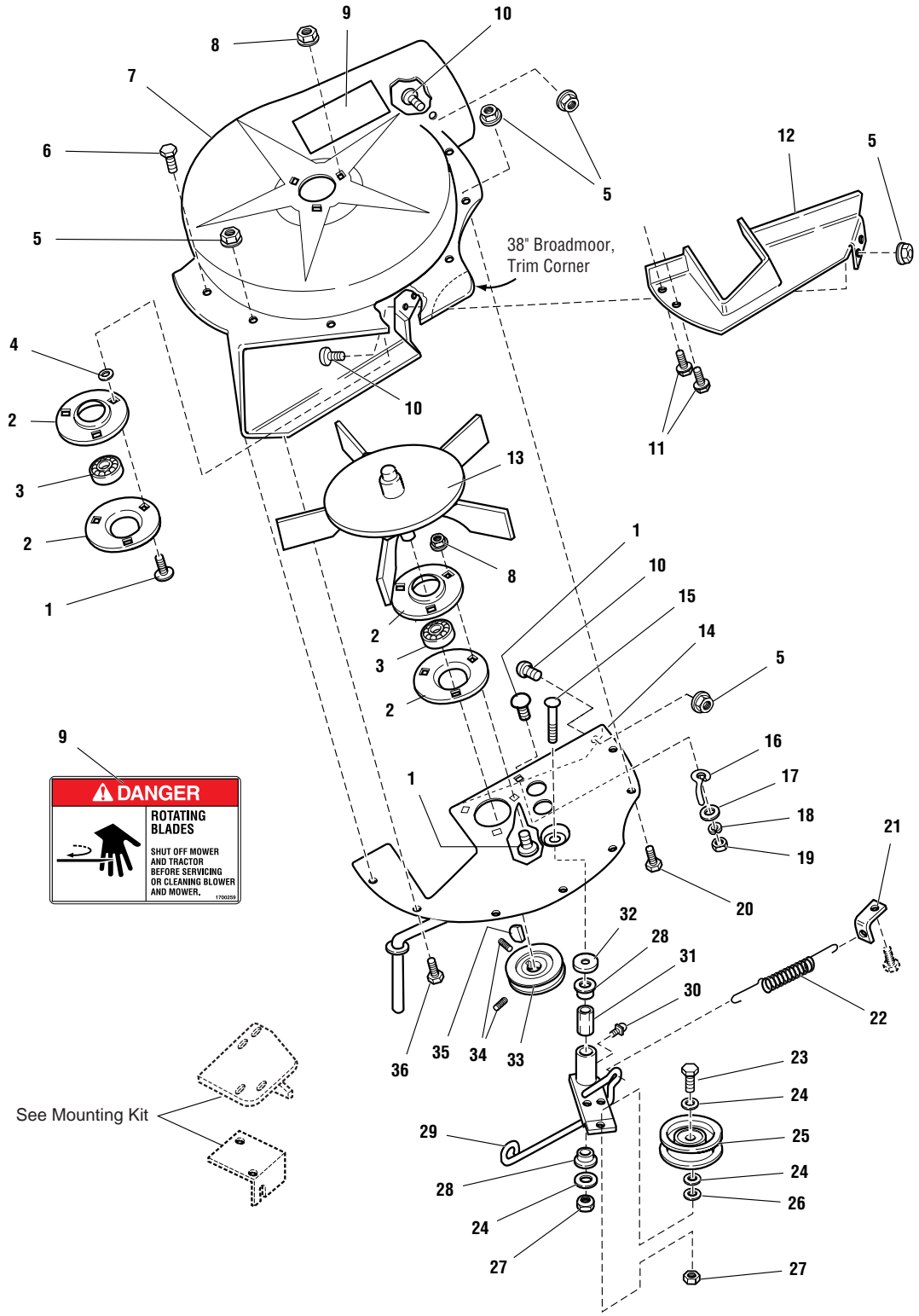
Rev. 09/2002

TP 400-3544-00-AT-SMA

Turbo - 38", 44" & 50" Mower

986208

NOTE: Unless noted otherwise, use the standard hardware torque specification chart.



The above parts group applies to the following Mfg. Nos.:

1694304 Turbo - 38", 44" & 50" Mower

Turbo - 38", 44" & 50" Mower

REF NO.	PART NO.	QTY.	DESCRIPTION
1	1931333	7	CARRIAGE BOLT, 5/16-18 x 3/4
2	1665982	4	RETAINER, Bearing
3	108202	2	BEARING
4	1933988	6	PUSH NUT, 3/8
5	1930641	10	NUT, Hex, Flange Lock, 1/4-20
6	1925003	1	CAPSCREW, Hex, Taptite, 1/4-20 x 1/2
7	1724441	1	FAN HOUSING (Includes Ref. No. 9)
8	1927557	6	NUT, Flange, Whizlock, 5/16-18
9	1700259	1	DECAL, Danger, Blower
10	1931317	4	CARRIAGE BOLT, 1/4-20 x 3/4
11	1960256	2	CAPSCREW, Washer Head, Plastite, 1/4-18 x 5/8
12	1705267	1	COVER, Bottom
13	1706631	1	FAN ASSEMBLY, 5 Blade
14	1706465	1	PLATE ASSEMBLY
15	1931355	1	CARRIAGE BOLT, 3/8-16 x 2-1/4
16	1678435	1	BELT STOP
17	1924874	1	WASHER, Flat
18	1917356	1	WASHER, Spring Lock, 5/16
19	1917372	1	NUT, Hex, 5/16
20	1924009	2	CAPSCREW, Hex Head, 1/4-20 x 7/8
21	1668500	1	BRACKET, Anchor, Spring
22	1716853	1	SPRING, Tension
23	1920415	1	CAPSCREW, Hex Head, 3/8-16 x 1-1/4
24	1924940	3	WASHER, Plain
25	154534	1	IDLER PULLEY ASSEMBLY
26	1933263	1	WASHER, Flat
27	1960251	2	NUT, Hex, Jam, Center Lock, 3/8-16
28	1676833	2	SPACER
29	1706284	1	LEVER ASSEMBLY, Turbo (Includes Ref. Nos. 30 & 31)
30	1704314	1	FITTING, Grease
31	1676148	2	BUSHING
32	1924361	1	WASHER, Flat
33	1706634	1	PULLEY, Driven
34	1960619	2	SETSCREW, Hex, Socket Head, 5/16-18 x 5/16
35	960403	1	KEY, Woodruff, Modified
36	1921959	4	CAPSCREW, Hex Head, 1/4-20 x 5/8

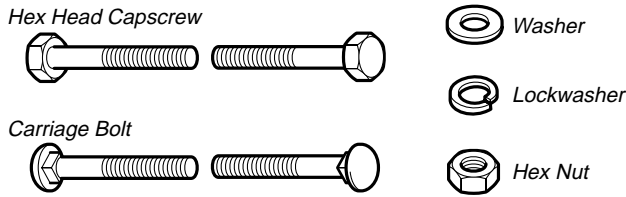
Footnotes:

The above parts group applies to the following Mfg. Nos.:

1694304 Turbo - 38", 44" & 50" Mower

Hardware Identification & Torque Specifications

Common Hardware Types

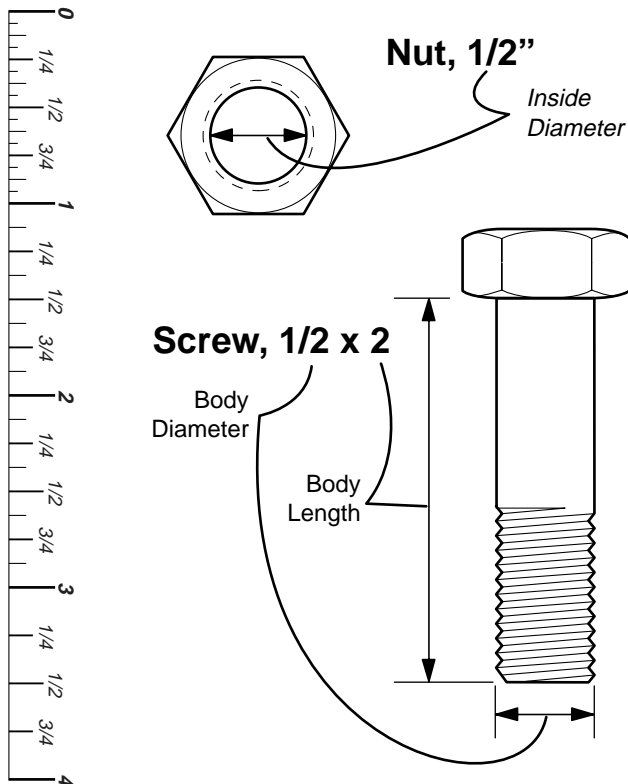


Standard Hardware Sizing

When a washer or nut is identified as **1/2"**, this is the *Nominal size*, meaning the *inside diameter* is 1/2 inch; if a second number is present it represent the *threads per inch*

When bolt or capscrew is identified as **1/2 - 16 x 2"**, this means the *Nominal size*, or *body diameter* is 1/2 inch; the second number represents the *threads per inch* (16 in this example, and the final number is the *body length* of the bolt or screw (in this example 2 inches long).

The guides and ruler furnished below are designed to help you select the appropriate hardware and tools.



Torque Specification Chart

FOR STANDARD MACHINE HARDWARE (Tolerance $\pm 20\%$)

Hardware Grade	No Marks		SAE Grade 2		SAE Grade 5		SAE Grade 8	
	in/lbs ft/lbs	Nm.	in/lbs ft/lbs	Nm.	in/lbs ft/lbs	Nm.	in/lbs ft/lbs	Nm.
8-32	19	2.1	30	3.4	41	4.6		
8-36	20	2.3	31	3.5	43	4.9		
10-24	27	3.1	43	4.9	60	6.8		
10-32	31	3.5	49	5.5	68	7.7		
1/4-20	66	7.6	8	10.9	12	16.3		
1/4-28	76	8.6	10	13.6	14	19.0		
5/16-18	11	15.0	17	23.1	25	34.0		
5/16-24	12	16.3	19	25.8	27	34.0		
3/8-16	20	27.2	30	40.8	45	61.2		
3/8-24	23	31.3	35	47.6	50	68.0		
7/16-14	30	40.8	50	68.0	70	95.2		
7/16-20	35	47.6	55	74.8	80	108.8		
1/2-13	50	68.0	75	102.0	110	149.6		
1/2-20	55	74.8	90	122.4	120	163.2		
9/16-12	65	88.4	110	149.6	150	204.0		
9/16-18	75	102.0	120	163.2	170	231.2		
5/8-11	90	122.4	150	204.0	220	299.2		
5/8-18	100	136	180	244.8	240	326.4		
3/4-10	160	217.6	260	353.6	386	525.0		
3/4-16	180	244.8	300	408.0	420	571.2		
7/8-9	140	190.4	400	544.0	600	816.0		
7/8-14	155	210.8	440	598.4	660	897.6		
1-8	220	299.2	580	788.8	900	1,244.0		
1-12	240	326.4	640	870.4	1,000	1,360.0		

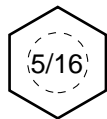
NOTES

- These torque values are to be used for all hardware excluding: locknuts, self-tapping screws, thread forming screws, sheet metal screws and socket head setscrews.
- Recommended seating torque values for locknuts:
 - for prevailing torque locknuts - use 65% of grade 5 torques.
 - for flange whizlock nuts and screws - use 135% of grade 5 torques.
- Unless otherwise noted on assembly drawings, all torque values must meet this specification.

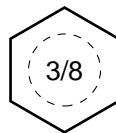
Wrench & Fastener Size Guide



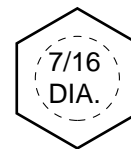
1/4" Bolt or Nut
Wrench—7/16"



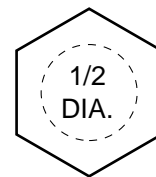
5/16" Bolt or Nut
Wrench—1/2"



3/8" Bolt or Nut
Wrench—9/16"



7/16" Bolt or Nut
Wrench (Bolt)—5/8"
Wrench (Nut)—11/16"



1/2" Bolt or Nut
Wrench—3/4"

Free Manuals Download Website

<http://myh66.com>

<http://usermanuals.us>

<http://www.somanuals.com>

<http://www.4manuals.cc>

<http://www.manual-lib.com>

<http://www.404manual.com>

<http://www.luxmanual.com>

<http://aubethermostatmanual.com>

Golf course search by state

<http://golfingnear.com>

Email search by domain

<http://emailbydomain.com>

Auto manuals search

<http://auto.somanuals.com>

TV manuals search

<http://tv.somanuals.com>