

Attachment Illustrated Parts List



Attachment

| Mfg. No. | Description |
|----------|----------------|
| 1694947 | Lift Lever Kit |

Simplicity

MANUFACTURING, INC.
500 N. Spring Street / PO Box 997
Port Washington, WI 53074-0997 USA

www.simplicitymfg.com

© Copyright 2007 Simplicity Manufacturing, Inc. All Rights Reserved. Printed In USA.

Part No.: 1734852

Rev. 04/2007

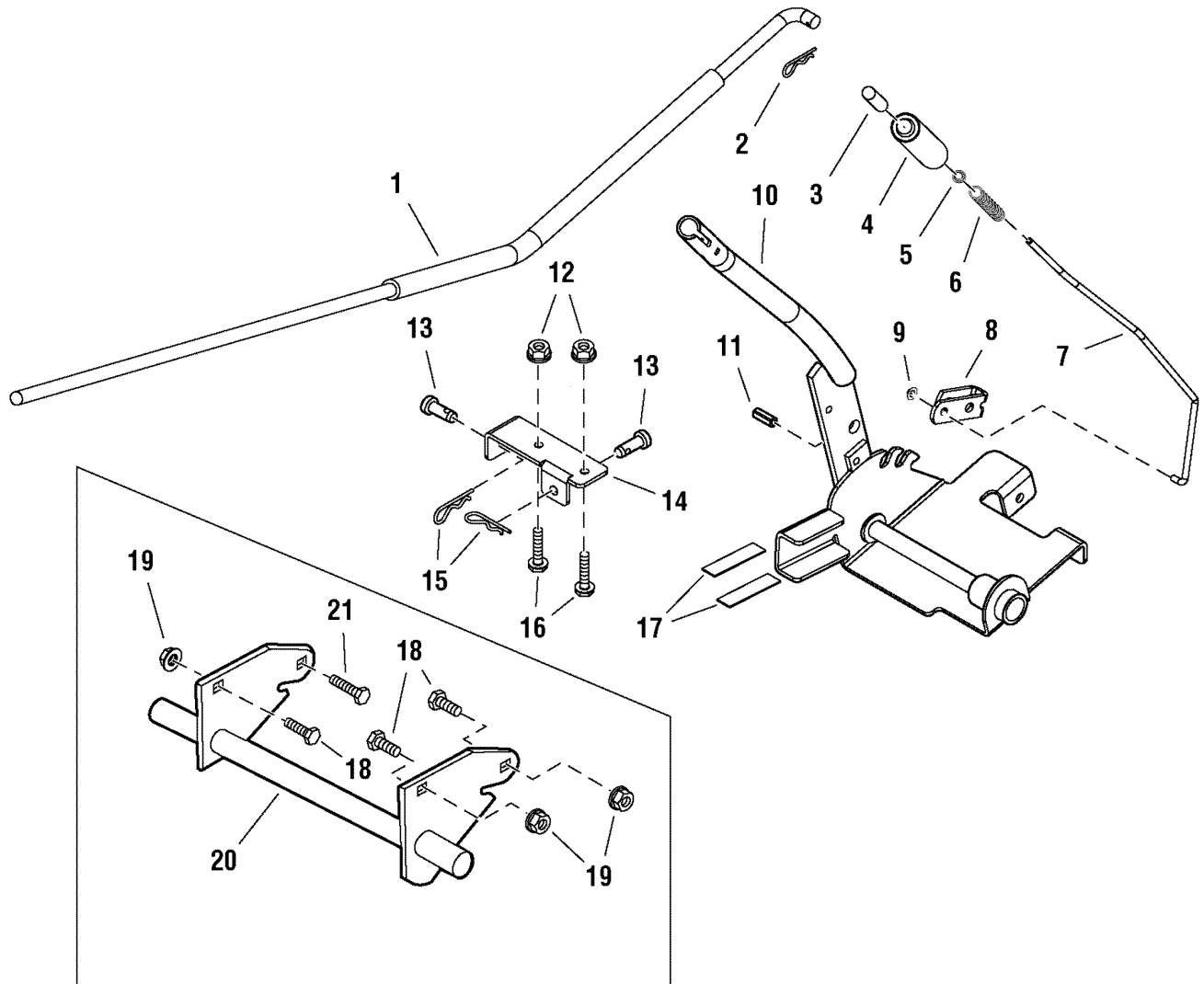
TP 400-4568-00-AT-SMA

| PRODUCT COMPONENTS | PAGES |
|---|--------------------------|
| Lift Lever Kit | 4 |
| Torque Specification Chart | Inside Back Cover |

Lift Lever Kit

987175

NOTE: Unless noted otherwise,
use the standard hardware torque
specification chart.



The above parts group applies to the following Mfg. Nos.:

1694947 - Lift Lever Kit

Lift Lever Kit

| REF NO | PART NO. | QTY. | DESCRIPTION |
|--------|------------|------|-------------------------------------|
| 1 | 1725959ASM | 1 | ROD & TUBE ASSEMBLY |
| 2 | 1960033SM | 1 | CLIP, Hair Pin |
| 3 | 1723124SM | 1 | BUTTON, Red |
| 4 | 1713995SM | 1 | GRIP, Soft, Black |
| 5 | 1960674SM | 1 | PUSH NUT, 1/4 |
| 6 | 1723321SM | 1 | SPRING, Compression |
| 7 | 1725958SM | 1 | ROD, Latch |
| 8 | 1721999ASM | 1 | LATCH, Lift Lever |
| 9 | 1960126SM | 1 | PUSH NUT, 1/4 |
| 10 | 1727441ASM | 1 | LEVER ASSEMBLY |
| 11 | 1927609SM | 1 | PIN, 3/8 x 1 |
| 12 | 1931277SM | 6 | NUT, Hex, Flange Whiz Lock, 5/16-18 |
| 13 | 1708298SM | 2 | PIN, Round Head, Drilled, 3/8 x 1 |
| 14 | 1732511ASM | 1 | BRACKET, Mounting |
| 15 | 1960074SM | 2 | CLIP, Hair Pin |
| 16 | 1960585SM | 2 | CAPSCREW, Hex Head, 5/16-18 x 1-3/4 |
| 17 | 1725957SM | 2 | PAD, Rubber |
| 18 | 2826149SM | 3 | CAPSCREW, Hex Head, 5/16-18 x 1 |
| 19 | 1960636SM | 3 | NUT, Hex, KEPS, 5/16-18 |
| 20 | 1731381ASM | 1 | SHAFT ASSEMBLY |
| 21 | 1921221SM | 1 | CAPSCREW, Hex Head, 5/16-18 x 1-1/2 |

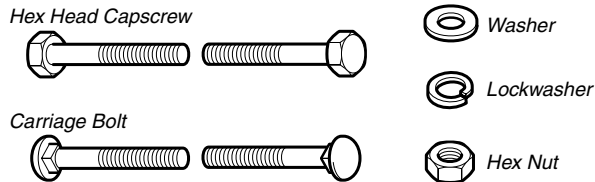
Footnotes

The above parts group applies to the following Mfg. Nos.:

1694947 - Lift Lever Kit

Hardware Identification & Torque Specifications

Common Hardware Types

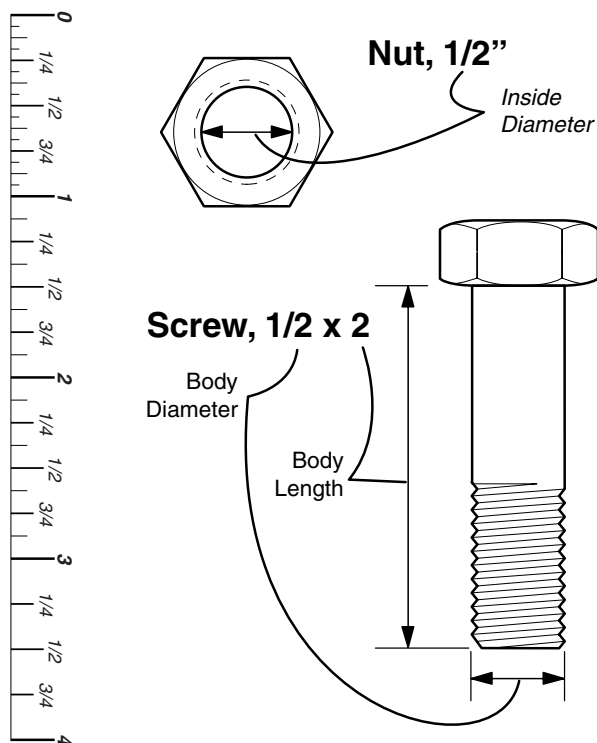


Standard Hardware Sizing

When a washer or nut is identified as **1/2"**, this is the *Nominal size*, meaning the *inside diameter* is 1/2 inch; if a second number is present it represent the *threads per inch*

When bolt or capscrew is identified as **1/2 - 16 x 2"**, this means the *Nominal size*, or *body diameter* is 1/2 inch; the second number represents the *threads per inch* (16 in this example, and the final number is the *body length* of the bolt or screw (in this example 2 inches long).

The guides and ruler furnished below are designed to help you select the appropriate hardware and tools.



| Torque Specification Chart | | | | | | |
|---|-------------------------|-------|------------------|-------|------------------|---------|
| FOR STANDARD MACHINE HARDWARE (Tolerance ± 20%) | | | | | | |
| Hardware Grade | No Marks SAE Grade 2 | | SAE Grade 5 | | SAE Grade 8 | |
| | in/lbs ft/lbs | Nm. | in/lbs ft/lbs | Nm. | in/lbs ft/lbs | Nm. |
| 8-32 | 19 | 2.1 | 30 | 3.4 | 41 | 4.6 |
| 8-36 | 20 | 2.3 | 31 | 3.5 | 43 | 4.9 |
| 10-24 | 27 | 3.1 | 43 | 4.9 | 60 | 6.8 |
| 10-32 | 31 | 3.5 | 49 | 5.5 | 68 | 7.7 |
| 1/4-20 | 66 | 7.6 | 8 | 10.9 | 12 | 16.3 |
| 1/4-28 | 76 | 8.6 | 10 | 13.6 | 14 | 19.0 |
| 5/16-18 | 11 | 15.0 | 17 | 23.1 | 25 | 34.0 |
| 5/16-24 | 12 | 16.3 | 19 | 25.8 | 27 | 34.0 |
| 3/8-16 | 20 | 27.2 | 30 | 40.8 | 45 | 61.2 |
| 3/8-24 | 23 | 31.3 | 35 | 47.6 | 50 | 68.0 |
| 7/16-14 | 30 | 40.8 | 50 | 68.0 | 70 | 95.2 |
| 7/16-20 | 35 | 47.6 | 55 | 74.8 | 80 | 108.8 |
| 1/2-13 | 50 | 68.0 | 75 | 102.0 | 110 | 149.6 |
| 1/2-20 | 55 | 74.8 | 90 | 122.4 | 120 | 163.2 |
| 9/16-12 | 65 | 88.4 | 110 | 149.6 | 150 | 204.0 |
| 9/16-18 | 75 | 102.0 | 120 | 163.2 | 170 | 231.2 |
| 5/8-11 | 90 | 122.4 | 150 | 204.0 | 220 | 299.2 |
| 5/8-18 | 100 | 136 | 180 | 244.8 | 240 | 326.4 |
| 3/4-10 | 160 | 217.6 | 260 | 353.6 | 386 | 525.0 |
| 3/4-16 | 180 | 244.8 | 300 | 408.0 | 420 | 571.2 |
| 7/8-9 | 140 | 190.4 | 400 | 544.0 | 600 | 816.0 |
| 7/8-14 | 155 | 210.8 | 440 | 598.4 | 660 | 897.6 |
| 1-8 | 220 | 299.2 | 580 | 788.8 | 900 | 1,244.0 |
| 1-12 | 240 | 326.4 | 640 | 870.4 | 1,000 | 1,360.0 |

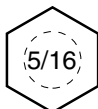
NOTES

- These torque values are to be used for all hardware excluding: locknuts, self-tapping screws, thread forming screws, sheet metal screws and socket head setscrews.
- Recommended seating torque values for locknuts:
 - for prevailing torque locknuts - use 65% of grade 5 torques.
 - for flange whizlock nuts and screws - use 135% of grade 5 torques.
- Unless otherwise noted on assembly drawings, all torque values must meet this specification.

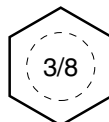
Wrench & Fastener Size Guide



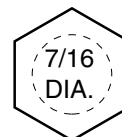
1/4" Bolt or Nut
Wrench—7/16"



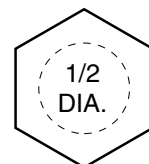
5/16" Bolt or Nut
Wrench—1/2"



3/8" Bolt or Nut
Wrench—9/16"



7/16" Bolt or Nut
Wrench (Bolt)—5/8"
Wrench (Nut)—11/16"



1/2" Bolt or Nut
Wrench—3/4"

Free Manuals Download Website

<http://myh66.com>

<http://usermanuals.us>

<http://www.somanuals.com>

<http://www.4manuals.cc>

<http://www.manual-lib.com>

<http://www.404manual.com>

<http://www.luxmanual.com>

<http://aubethermostatmanual.com>

Golf course search by state

<http://golfingnear.com>

Email search by domain

<http://emailbydomain.com>

Auto manuals search

<http://auto.somanuals.com>

TV manuals search

<http://tv.somanuals.com>