

# Digital Phone Card™ for Data-Capable Mobile Phones

*CompactFlash Card with data cable and PC Card adapter for connecting mobile phones to:*

- *Mobile Computers Based on Windows CE v3.0 (i.e., Pocket PC, Pocket PC 2002 and HPC 2000)*
- *Mobile Computers Based on Windows CE v2.11 (i.e., Palm-size PC, Handheld PC and Handheld PC Pro)*
- *Casio Cassiopeia BE-300 Pocket Manager*
- *Windows 9x/Me/2000/XP notebooks*
- *Apple PowerBooks with MacOS 8.5.1 - 9.2.1*

## User's Guide



**socket**™

## How this Manual is Organized

This manual is designed to help you install and operate the Socket Digital Phone Card.

Chapter 1, **Introduction**, describes key features of the DPC and identifies package contents.

Chapter 2, **Preliminary Setup**, shows Steps 1-4 for setup for all mobile computer categories. You need to begin DPC setup by completing the steps in this chapter first.

Chapter 3, **Windows CE Setup**, shows the latter part of the setup for Pocket PCs, Pocket PC 2002s, HPC 2000s, Palm-size PCs, Handheld PC Pros, and pen tablets.

Chapter 4, **Casio BE-300 Setup**, shows the latter part of the setup for the Casio Cassiopeia BE-300 Pocket Manager.

Chapter 5, **Windows 9x/Me Setup**, shows the latter part of the setup for Windows 95/98/Me notebooks.

Chapter 6, **Windows 2000/XP Setup**, shows the latter part of the setup for Windows 2000/XP notebooks.

Chapter 7, **MacOS Setup**, shows the latter part of the setup for Apple PowerBooks.

Appendix A, **Specifications**, provides technical specifications for the DPC.

Appendix B, **Hints and Tips**, gives tips for using the system efficiently.

Appendix C, **Troubleshooting**, gives advice for fixing the most common problems you may encounter while using the DPC.

Appendix D, **ISP Resources**, lists some Internet Service Providers that you may want to choose from to use with your Digital Phone Card.

Appendix E, **Technical Support**, tells you how to reach Socket's technical support department.

# Table of Contents

<b>CHAPTER 1 INTRODUCTION</b>	<b>3</b>
Overview	3
Working Wirelessly with the DPC	4
Contents of the Connection Kit	5
Installation Steps Summary	6
<b>CHAPTER 2 PRELIMINARY SETUP</b>	<b>8</b>
STEP 1: Register the Card	8
STEP 2: Activate Mobile Phone Data Service	8
STEP 3: Network Information Form	9
STEP 4: Uninstall Old Socket DPC Software	10
<b>CHAPTER 3 WINDOWS CE SETUP</b>	<b>11</b>
STEP 5: Install the Software	12
STEP 6: Insert the Card and Attach the Phone	14
STEP 7: Set up Remote Networking	15
STEP 8: Make a Data Call	20
<b>CHAPTER 4 CASIO BE-300 SETUP</b>	<b>25</b>
STEP 4: Insert the Card and Attach the Phone	25
STEP 5: Set up Remote Networking	26
STEP 6: Make a Data Call	27
<b>CHAPTER 5 WINDOWS 9X/ME SETUP</b>	<b>28</b>
STEP 5: Insert the Installation CD	28
STEP 6: Insert the Card and Attach the Phone	28
STEP 7: Install the Software	29
STEP 8: Set up Windows for New Modem	30
STEP 9: Set up Remote Networking	32
STEP 10: Make a Data Call	34
<b>CHAPTER 6 WINDOWS 2000/XP SETUP</b>	<b>36</b>
STEP 5: Insert the Installation CD	36
STEP 6: Insert the Card and Attach the Phone	36
STEP 7: Install the Software	37
STEP 8: Set up Windows for a New Modem	38
STEP 9: Set up Remote Networking	40
STEP 10: Make a Data Call	43
<b>CHAPTER 7 MAC OS SETUP</b>	<b>45</b>
STEP 4: Insert the Card and Attach the Phone	45
STEP 5: Insert CD and Launch Installer	46
STEP 6: Set up New Modem	46
STEP 7: Set up Remote Networking	47

<b>STEP 8: Make A Data Call</b>	<b>49</b>
<b>APPENDIX A SPECIFICATIONS</b>	<b>51</b>
<b>APPENDIX B HINTS AND TIPS</b>	<b>53</b>
Choosing the Right Applications	53
Using Multiple Modems	53
<b>APPENDIX C TROUBLESHOOTING</b>	<b>54</b>
<b>APPENDIX D ISP RESOURCES</b>	<b>59</b>
<b>APPENDIX E TECHNICAL SUPPORT</b>	<b>61</b>
<b>LIMITED WARRANTY</b>	<b>62</b>
<b>COPYRIGHT NOTICE</b>	<b>64</b>
<b>REGULATORY COMPLIANCE</b>	<b>65</b>

# Chapter 1 Introduction

## Overview

The Socket Digital Phone Card (DPC) allows you to connect your data-capable mobile phone to a Windows-based mobile computer or Apple PowerBook. Now you can check email, browse the web, connect to your office network and synchronize files— **all wirelessly!**



When you use the Digital Phone Card, you don't need a modem, because your data-capable mobile phone simulates one. You can use the Digital Phone Card with any application that you use with a regular modem, such as for email, file transfers or web browsing.

The DPC fits directly into the CompactFlash I/O slot of a Pocket PC, Pocket PC 2002, HPC 2000, Palm-size PC, Handheld PC Pro, pen tablet, or Casio Cassiopeia BE-300 Pocket Manager.



With the included CompactFlash-to-PC Card adapter, you can also use the DPC in the PC Card slot of a Pocket PC, HPC 2000, Handheld PC Pro, Windows 9x/Me/2000/XP notebook or Apple PowerBook.

Your retail box may not completely list all the mobile phones compatible with your version of the DPC. For a complete, up-to-date listing, please visit: [www.socketcom.com/product/dpc.htm](http://www.socketcom.com/product/dpc.htm)

For software updates, visit: [www.socketcom.com/support/support\\_dpc.htm](http://www.socketcom.com/support/support_dpc.htm)

If you have the Windows NT operating system, please call Socket's technical support department at 510-744-2720 for compatibility information and installation instructions.

For more information about mobile phones and wireless data communications, check out Socket's white paper, "Mobile Phone Basics," at: [www.socketcom.com/pdf/wp\\_mobilephone.pdf](http://www.socketcom.com/pdf/wp_mobilephone.pdf)

## Working Wirelessly with the DPC

### *Wireless Web Browsing*



If you have a web browser on your mobile computer (e.g., Pocket Internet Explorer, Netscape, etc.), you can use the DPC to browse the Internet anytime anywhere within your mobile phone's coverage area. Simply use the DPC to wirelessly connect to your office network or Internet Service Provider (ISP), open your web browser, then surf the Internet!

### *Wireless Email*



You can set up your mobile computer's Inbox to directly access your IMAP4-enabled exchange server or ISP's POP3 user accounts. Also, if you have a web browser on your mobile computer, you can also use html-based email services.

### *Wireless ActiveSync*



While running *ActiveSync* wirelessly with the DPC, your mobile computer works as if it were directly connected to a host computer. For information about *ActiveSync*, please refer to your mobile computer's user manual.

## Contents of the Connection Kit

The **Socket Digital Phone Card for Pocket PCs** package includes:

- A Socket Digital Phone Card (CompactFlash card Type I) with permanently attached data cable, customized for specific mobile phones
- The *Socket Digital Phone Card Installation CD*
- The *Quick Start Guide for Digital Phone Card*
- A registration card



The **Socket Upgrade Kit for the Digital Phone Card** includes:

- A CompactFlash-to-PC Card adapter
- The *Socket DPC Upgrade Kit Installation CD*
- A *Quick Start Guide for Digital Phone Card Upgrade*
- A registration card



To register the DPC online, visit: [www.socketcom.com/product/prodreg.htm](http://www.socketcom.com/product/prodreg.htm)

## Installation Steps Summary

Setting up the DPC begins similarly for all mobile computer types, but ends differently for different mobile computer types.

To set up the DPC, first begin in Chapter 2, Preliminary Setup, which includes instructions similar for all mobile computer categories. After completing preliminary setup, finish setup by proceeding to the appropriate chapter for your mobile computer.

### **Setup for Windows CE**

STEP 1: Register your card.

STEP 2: Activate data services for your mobile phone.

STEP 3: Complete the Network Information Form.

STEP 4: Uninstall old Socket DPC software.

STEP 5: Install the software.\*

STEP 6: Insert the card and attach the phone.

STEP 7: Set up remote networking.

STEP 8: Dial and connect!



### **Setup for Casio BE-300**

STEP 1: Register your card.

STEP 2: Activate data services for your mobile phone.

STEP 3: Complete the Network Information Form.

STEP 4: Insert the card and attach the phone.

STEP 5: Set up remote networking.

STEP 6: Dial and connect!



*\*Software installation is not needed on HP Jornada 500 series Pocket PCs.*



### **Setup for Windows 9x/Me/2000/XP**

- STEP 1: Register your card.
- STEP 2: Activate data services for your mobile phone.
- STEP 3: Complete the Network Information Form.
- STEP 4: Uninstall old Socket DPC software.
- STEP 5: Insert the installation CD.
- STEP 6: Insert the card and attach the phone.
- STEP 7: Install the software.
- STEP 8: Set up new modem.
- STEP 9: Set up remote networking.
- STEP 10: Dial and connect!



### **Setup for Mac OS**

- STEP 1: Register your card.
- STEP 2: Activate data services for your mobile phone.
- STEP 3: Complete the Network Information Form.
- STEP 4: Insert the card and attach the phone.
- STEP 5: Insert the installation CD and launch the Installer.
- STEP 6: Set up new modem.
- STEP 7: Set up remote networking.
- STEP 8: Dial and connect!



## Chapter 2 Preliminary Setup

This chapter explains the first four steps of DPC setup, which are done similarly for all mobile computer categories. After completing the steps covered in this chapter, complete DPC setup by going to the chapter designated for your specific mobile computer category.

The four steps covered in this chapter include:

- Registering your card
- Activating data service for your mobile phone
- Network Information Form
- Uninstalling old Socket DPC software

### STEP 1: Register the Card

Register your DPC online at [www.socketcom.com/product/prodreg.htm](http://www.socketcom.com/product/prodreg.htm).

You can also use the product registration form included in your DPC package.

### STEP 2: Activate Mobile Phone Data Service

Some mobile phone carriers activate data service only when requested and may charge small fees. If necessary, ask your phone carrier for this feature.

***Important!***

***If data service is not activated for your mobile phone, then you will not be able to use your phone for any data connections!***



## STEP 3: Network Information Form

Contact your office network administrator or Internet Service Provider (ISP) for the information below. If you plan to use ISP services offered by your mobile phone carrier, contact your carrier.

For a text-only version you can email, go to the *Docs* folder on the installation CD or visit: [www.socketcom.com/pdf/dpcform.txt](http://www.socketcom.com/pdf/dpcform.txt)

1. Please provide the following dial-up information:

Dial-up number: ( \_\_\_\_ ) \_\_\_\_\_

User name: \_\_\_\_\_

Password: \_\_\_\_\_

Domain: \_\_\_\_\_

2. Does the network support DHCP (Dynamic Host Configuration Protocol)?

**YES.** If *Yes*, then STOP. You do NOT need to answer Question 3.

**NO.** If *No*, then continue to Question 3. You may need only some of the IP addresses listed below.

3. Please specify any applicable IP addresses:

(a) Mobile Computer IP address: \_\_\_\_ . \_\_\_\_ . \_\_\_\_ . \_\_\_\_

(b) Subnet Mask: \_\_\_\_ . \_\_\_\_ . \_\_\_\_ . \_\_\_\_

(c) Default Gateway: \_\_\_\_ . \_\_\_\_ . \_\_\_\_ . \_\_\_\_

(d) Primary DNS: \_\_\_\_ . \_\_\_\_ . \_\_\_\_ . \_\_\_\_

(e) Secondary DNS: \_\_\_\_ . \_\_\_\_ . \_\_\_\_ . \_\_\_\_

(f) Primary WINS: \_\_\_\_ . \_\_\_\_ . \_\_\_\_ . \_\_\_\_

(g) Secondary WINS: \_\_\_\_ . \_\_\_\_ . \_\_\_\_ . \_\_\_\_

*For remote ActiveSync only:* If your server does NOT have WINS services enabled, you must use the IP address of your host computer instead of a Primary WINS address.

(h) Host computer IP address: \_\_\_\_ . \_\_\_\_ . \_\_\_\_ . \_\_\_\_

## **STEP 4: Uninstall Old Socket DPC Software**

Windows only! Delete any old Socket DPC software you may have previously installed on your mobile computer. Refer to the README on the installation CD for uninstall procedures.

This step is NOT needed for the Casio BE-300 or Apple PowerBooks.

## Chapter 3 Windows CE Setup

This chapter explains Steps 5-8 for a variety of mobile computers based on Windows CE. Before starting Steps 5-8, be sure to complete Steps 1-4, covered in *Chapter 2, Preliminary Setup*.



Because the interface for different Windows CE-based mobile computers varies, some parts of this chapter will be divided into sections based on Windows CE device type.

The two device types include:

- **Pocket PC Devices**  
(i.e., Pocket PCs and Pocket PC 2002s)
- **Palm-size and Handheld PC Devices**  
(i.e., Palm-size PCs, Handheld PC 2000s, Handheld PC Pros, and pen tablets)

***Warning! Pocket PCs are not the same as Palm-size PCs!***  
*Setup differs for the two mobile computers!*

Pocket PCs and Pocket PC 2002s are based on Windows CE v3.0, while Palm-size PCs are based on Windows CE v2.11. If you are not sure whether you have a Pocket PC or Palm-size PC, you can find out by identifying what Windows CE version your mobile computer has. This is sometimes labeled as the Core System Version.

To determine the Windows CE version, go to either:

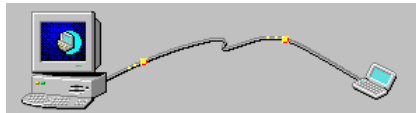
- **Start | Settings | System**. On some mobile computers, you may need to click on the **About** icon.
- **Start | Settings | Control Panel | System**. In the **System Properties** screen, click on the **System** tab.

## STEP 5: Install the Software

*Important! If you have an HP Jornada 500 series Pocket PC, the software drivers are pre-installed! Go ahead and insert the card!*

For any other Windows CE-based mobile computer, follow these steps BEFORE inserting the DPC:

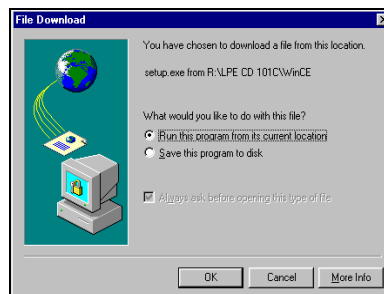
1. Make an active partnership between the mobile computer and a host PC.



An active partnership exists if data can be transferred between the mobile computer and the host PC via a serial/USB/Ethernet connection cable or cradle.

2. Insert the *Socket Digital Phone Card Installation CD* into the host PC.
  3. Run the SETUP.HTM or SETUP.EXE file on the CD-ROM, depending on what web browser your host PC uses by default.
- IF YOUR DEFAULT WEB BROWSER IS INTERNET EXPLORER, run the SETUP.HTM file:
- (a) Click **Start | Run** on the host PC. Type **X : \SETUP . HTM** (Replace X with your CD drive letter.)
  - (b) In the **File Download** screen, select the option that lets you run (or open) the file from its current location.

***IMPORTANT! YOU MUST RUN THE FILE! DO NOT SAVE IT!***



*File Download screen from Internet Explorer 5.5*

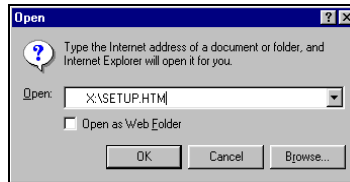
- (c) A **Security Warning** screen will appear. Click **Yes**.

- IF YOUR DEFAULT WEB BROWSER IS NETSCAPE, DO NOT run the SETUP.HTM file on Netscape, because it will not work properly.

Instead, choose either of two options:

OPTION ONE: Use Internet Explorer to run the SETUP.HTM file.

- (a) In the Internet Explorer screen, click **File | Open**.
- (b) In the **Open** screen, type **X:\SETUP.HTM**  
(Replace X with your CD drive letter.)



*Open screen from Internet Explorer 5.5*

- (c) Proceed with the instructions described on the previous page for Internet Explorer.

OPTION TWO: Run the SETUP.EXE file.

Click on **My Computer** or use Windows Explorer to manually browse the CD to the **WinCE** folder and manually launch the **SETUP . EXE** file found there.

***Important! Be sure to choose the SETUP.EXE file, NOT the SETUP.HTM file. The two file types have different icons:***



*EXE icon*



*HTM icon for Netscape*

5. Follow the instructions on the host PC screen until setup is done.

*Note: After completing setup, your host PC may display an **Application Downloading Complete** screen. Click **OK**.*

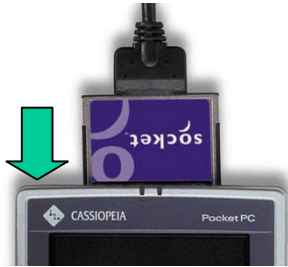
6. Disconnect the mobile computer from the host computer. Soft reset the mobile computer. Push the reset button, often on the back of the mobile computer.

***Important! Be sure to soft reset your mobile computer after software installation! Push the reset button, which may be on the back of your mobile computer!***

## STEP 6: Insert the Card and Attach the Phone

Insert the DPC into the mobile computer, with the card's purple label on top. If using a PC Card slot, use a PC Card adapter. Then attach the free end of the DPC cable to the data port of the phone, typically located on the bottom or side of the phone.

*Insert the card into your mobile computer...*



*... Then attach the cable to the phone.*



*Note: After inserting the card, a message may appear asking if you want to run your computer on battery power. Click **Yes**.*



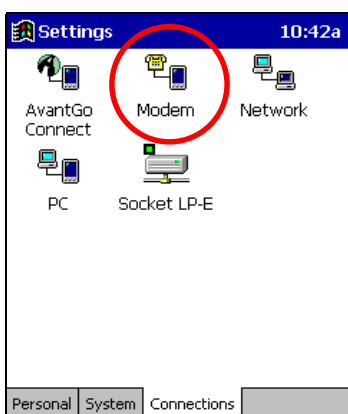
## STEP 7: Set up Remote Networking

You will need your completed Network Information Form for this step.

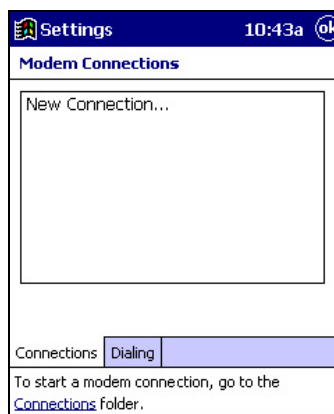
### Remote Networking for Pocket PC Devices

This section primarily shows Pocket PC 2002 screens. Pocket PCs will have functionally equivalent screens except where otherwise noted.

1. Go to **Start | Settings | Connections**.
2. Pocket PC — Tap on **Modem**. In the next screen, tap **New Connection...**

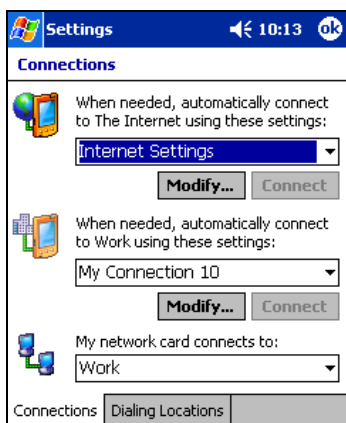


*Connections screen*

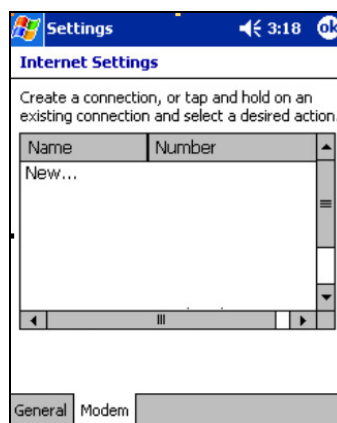


*Modem Connections screen*

Pocket PC 2002 — Tap on **Connections**. In the next screen, in the top field, select **Internet Settings**. Tap **Modify...** In the next screen, tap **New...**

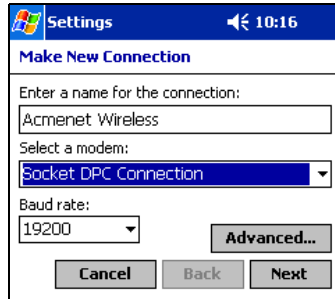


*Connections screen*



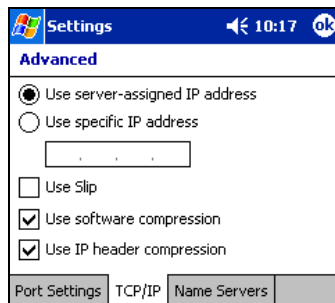
*Internet Settings screen*

- In the **Make New Connection** screen, enter a name for the connection. In the **Select a modem** field, select **Socket DPC Connection**. Make sure the **Baud Rate** is set to **19200** bps.

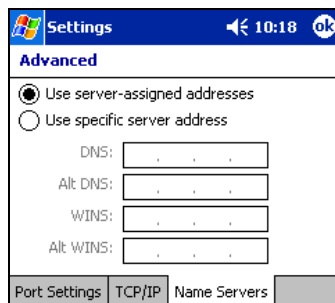


*Make New Connection screen*

- Tap on **Advanced...** Do NOT change the default settings in **Port Settings**.
  - If using DHCP, you can probably keep the default settings in the **TCP/IP** and **Name Servers** screens. Tap **ok**.
  - If NOT using DHCP, click on the **TCP/IP** and/or **Name Servers** tabs and follow your Network Information Form to enter any necessary IP addresses. When done, tap **ok**.



*TCP/IP screen*



*Name Servers screen*

- When you return to the **Make New Connection** screen, tap **Next**.

6. In the next screen, enter the dial-up number and tap **Next**. Spaces or dashes are not required within the phone number.

*Phone number screen*

7. In the next screen, uncheck **Wait for dial tone before dialing**. Tap **Finish**.

*Dialing settings screen*

8. Pocket PC 2002 only: After finishing connection setup, you will return to **Internet Settings**. If multiple connections exist, then you must set up the device to dial the DPC connection. Tap and hold your stylus on the DPC connection. In the menu, select **Always Dial**. The bottom of the screen should now report that when dialing, it will use this connection. Tap **ok**.

*Internet Settings screen*

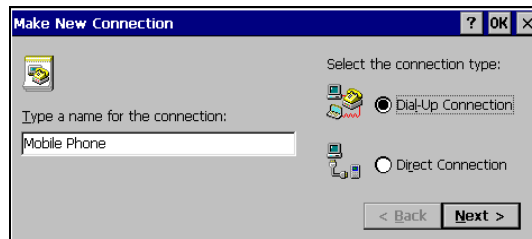
## **Remote Networking for Palm-size and Handheld PC Devices**

This section primarily shows Handheld PC screens. Palm-size PCs, HPC 2000s, and pen tablets will have functionally equivalent screens. Any significant differences will be noted.

1. **Palm-size PC**: Go to **Start | Programs | Communications | Connections | Make New Connection**.

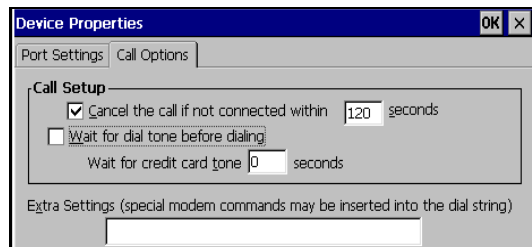
**Handheld PC or pen tablet**: Go to **Start | Programs | Communication | Remote Networking | Make New Connection**.

2. In the **Make New Connection** screen, enter a name for the connection, such as "Mobile Phone." Select **Dial-Up Connection**, then tap **Next>**.



*Make New Connection screen*

3. The **Make New Dial-Up Connection** screen will appear. In the **Select a modem** menu, select **Socket DPC Connection**. Tap on **Configure...**
4. In **Device Properties**, ignore **Port Settings** and tap on the **Call Options** tab.
5. In **Call Options**, uncheck **Wait for dial tone before dialing**. Tap **OK**.

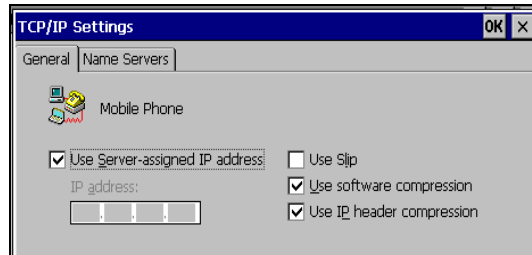


*Call Options screen*

6. In **Make New Dial-Up Connection**, tap on **TCP/IP Settings...**

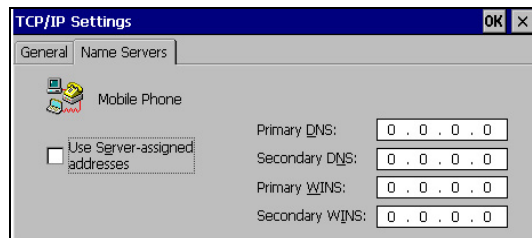
7. In the **TCP/IP Settings** screen, follow your Network Information Form to enter settings appropriate to your office network or ISP.

- If using DHCP, check **Use server-assigned IP address**. Tap **OK**.



*General TCP/IP Settings screen*

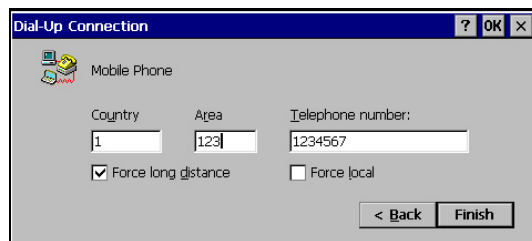
- If NOT using DHCP, uncheck **Use server-assigned IP address**. Enter your mobile computer IP address in the **IP address** field, and tap on the **Name Servers** tab to enter DNS and/or WINS addresses. Tap **OK**.



*Name Servers screen*

8. In the **Make New Dial-Up Connection** screen, tap **Next>**.

9. In the next screen, enter the phone number of your office network or ISP. Check **Force long distance**, then tap on the **Finish** button.



*Phone number screen*

## STEP 8: Make a Data Call

### *Preliminary Checklist*

1. Is the card properly inserted into your mobile computer, and is the cable connected securely to your mobile phone?
2. Is the phone receiving a digital signal? A **D** or equivalent will appear on the display of some phones.
3. Is the mobile phone's signal strength sufficient? A minimum strength of two bars is recommended, but some phones can send data with one. For a better signal, raise the antenna, hold the phone upright, and/or relocate.
4. Does your phone have enough battery power for your data call?

### **Making a Data Call for Pocket PC Devices**

This section primarily shows Pocket PC 2002 screens. Pocket PCs will have functionally equivalent screens except where otherwise noted.

### *Placing a Data Call*

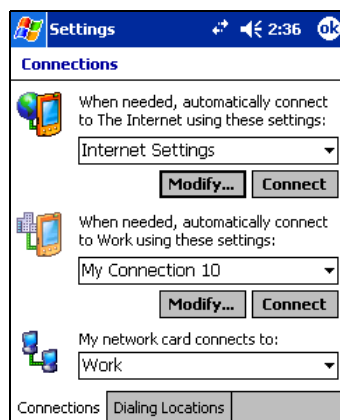
1. If not already open, start the connection you created for the DPC during remote networking setup:

Pocket PC: Go to **Start | Programs | Connections**.

Tap on the connection you created for the DPC.

Pocket PC 2002: Go to **Start | Settings | Connections | Connections**.

In the top field, select **Internet Settings**. Tap **Connect**.

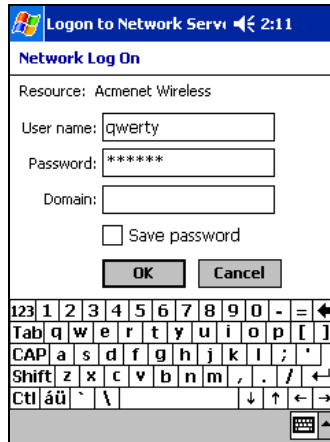


*Connections screen*

*Important! For Internet Settings, the Pocket PC 2002 must be set to use (i.e., always dial) your wireless DPC connection! Tap **Modify** to adjust.*

2. Enter your **User name** and **Password**.

Pocket PC: In the **Dial from** field, select **Home**.




*Network Log On screen*

3. (Optional) For convenience, you can check the **Save password** box, but your password will be saved only after you start the connection.
4. For some mobile computers, you need to modify the dial properties. For instructions, refer to the device's user manual.
5. On a Pocket PC, tap **Connect**, or on a Pocket PC 2002, tap **OK**.
6. When your mobile computer starts calling, you should see the call status on both the mobile computer screen and the phone display.




*Connection status screen*

7. When a screen reports that you have **Connected**, a connection icon  will also appear in your mobile computer's task tray:



*Connection status screen*

#### ***Ending a Data Call***

1. Go to **Start | Today**.
2. Tap on the connection icon  in the task tray.
3. The call status screen will appear (shown above).  
On a Pocket PC, tap **Disconnect**. On a Pocket PC 2002, tap **End**.  
The task tray icon will disappear, and your mobile phone will hang up.

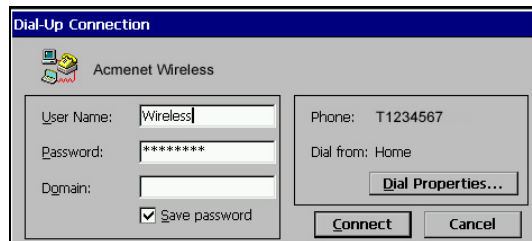


## **Making a Data Call for Palm-size and Handheld PC Devices**

This section primarily shows Handheld PC screens. Palm-size PCs and pen tablets will have functionally equivalent screens. Any significant differences will be noted.

### ***Placing a Data Call***

1. Go to **Start | Programs | Communication**. On some mobile computers, you may also need to click on **Remote Networking**.
2. Tap on the icon for your wireless DPC connection.
3. In the next screen, enter your **User name** and **Password**.




*Connection settings screen*

4. (Optional) For convenience, you can check the **Save password** box, but your password will be saved only after you start the connection.
5. For some mobile computers, you must modify the dial properties so the mobile computer can dial properly. For instructions, refer to the mobile computer's user manual.
6. Tap **Connect**. When your mobile computer starts calling, you should see the call status on both the mobile computer screen and phone display.




*Connection status screen*

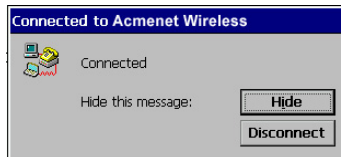
7. When a screen reports that you have **Connected**, a connection icon  will also appear in your mobile computer's task tray.



*Connection status screen*

### *Ending a Data Call*

1. Tap on the connection icon  in the task tray.
2. In the status screen that appears, tap **Disconnect**.  
The task tray icon will disappear, and your mobile phone will hang up.



*Connection status screen*

## Chapter 4 Casio BE-300 Setup

This chapter explains Steps 4-6 for the Casio Cassiopeia BE-300 Pocket Manager. Before starting Steps 4-6, be sure to complete Steps 1-3, covered in *Chapter 2, Preliminary Setup*.



You can also download condensed setup instructions for the Casio BE-300 at: [www.socketcom.com/support/support\\_dpc.htm](http://www.socketcom.com/support/support_dpc.htm)

### STEP 4: Insert the Card and Attach the Phone

Insert the DPC into the BE-300, with the card's purple label on top. Then attach the free end of the DPC cable to the data port of the phone, typically located on the bottom or side of the phone.




## STEP 5: Set up Remote Networking

You will need your completed Network Information Form for this step.

1. Go to **Main | Connections**. Tap on **New Setting**.
2. In the next screen, enter a **Connection name**, such as “Socket DPC.”  
Make sure **Dial-up** is selected, then tap ⇨
3. In the next screen, enter your **Phone number**, **Connection ID** (this is the same as your user name), and **Password**. Tap on **Advanced Settings**.
4. Tap ⇨. In the next screen, follow your Network Information Form to enter the proper settings for your network. When done, tap **OK**.
  - If your network supports DHCP, check **Auto detect**.
  - If your network does NOT support DHCP, uncheck **Auto detect** and enter any necessary IP addresses.
5. When you return to the dial-up information screen, tap ⇨
6. In the next screen, make the following selections:
  - **Modem**: Select the Socket DPC.
  - **Speed**: **19200 bps**
  - **Wait for tone**: unchecked
7. If needed, tap through the subsequent screens to enter any other network settings. When done, tap **Finish**.
8. A message may appear, reporting that the settings will take effect the next time you insert the card. Tap **ok**.

## STEP 6: Make a Data Call


### *Preliminary Checklist*

- Is the card properly inserted into your mobile computer, and is the cable connected securely to your mobile phone?
- Is the phone receiving a digital signal? A  or equivalent will appear on the display of some phones.
- Is the mobile phone's signal strength sufficient? A minimum strength of two bars is recommended, but some phones can send data with one. For a better signal, raise the antenna, hold the phone upright, and/or relocate.
- Does your phone have enough battery power for your data call?

### *Placing a Data Call*

1. After setting up the network connection in Step 5, the DPC connection should be listed in the **Connections** screen. Select your DPC connection, then tap **Connect**.
2. In the **Dial-up Connect** screen, verify the phone number, then tap **Connect**.
3. A series of screens will appear, reporting the status of your call. When your BE-300 has connected, it will report **Connected**.

### *Ending a Data Call*

1. If you hid the connection status screen, tap on the connection icon  in the status bar to make it re-appear.
2. In the connection status screen, tap **Disconnect**. In the next screen, tap **Disconnect Now**.

## Chapter 5 Windows 9x/Me Setup

This chapter explains Steps 5-10 for Windows 9x/Me notebooks. Before starting Steps 5-10, be sure to complete Steps 1-4, covered in *Chapter 2: Preliminary Setup*. This chapter shows Windows 98 screens. Windows 95/Me screens will be formatted differently but functionally equivalent. Any significant differences will be noted.

### STEP 5: Insert the Installation CD

Insert the installation CD into the CD drive of your notebook computer.



### STEP 6: Insert the Card and Attach the Phone

1. Plug the DPC into the PC Card adapter, with the purple label on top. Do NOT insert the DPC upside down, or damage may occur.



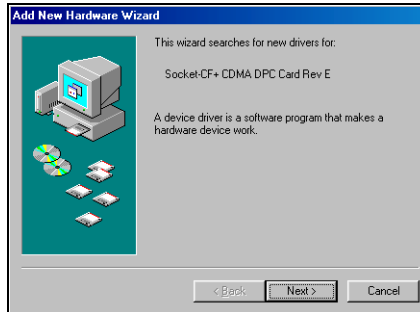
*Insert the DPC into the adapter with the card's colorful label on top.*

2. With the notebook computer turned ON, insert the combined unit into the PC Card slot. Windows notebooks in most cases will signal that the DPC has been properly inserted via a beep, task tray icon and/or message screen.
3. Connect the free end of the data cable to the data part of the mobile phone. The data port is typically on the bottom or side of the mobile phone and usually is the same port used to charge the phone.



## STEP 7: Install the Software

1. After you insert the DPC into your notebook for the first time, a new hardware or device driver wizard will appear.



*Add New Hardware Wizard*

2. Follow the wizard to install the DPC drivers, inserting the installation CD and making the appropriate selection below as prompted:
  - a. Windows 95 — Select **Other locations** and specify your CD drive.
  - b. Windows 98 — Select **Search for the best driver for your device**. In the next screen, select **CD-ROM drive**.



*Add New Hardware Wizard*

- c. Windows Me — Select **Specify the location of the driver**. In the next screen, select **Search for the best driver for your device**, and check **Removable Media**.

**Important! For Windows Me, DO NOT select Automatic search for a new driver!**

3. Follow the remaining instructions until installation is complete.

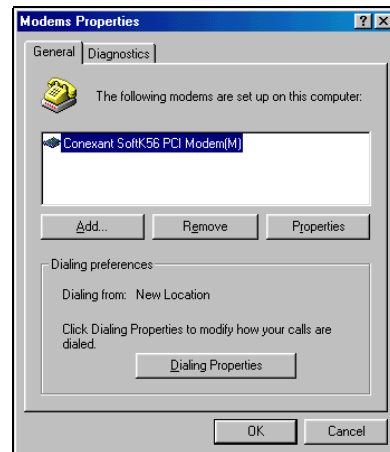
## STEP 8: Set up Windows for New Modem

After installing the hardware and software, follow these steps to set up Windows for a standard 19200 bps modem:

1. Go to **Start | Settings | Control Panel | Modems**.

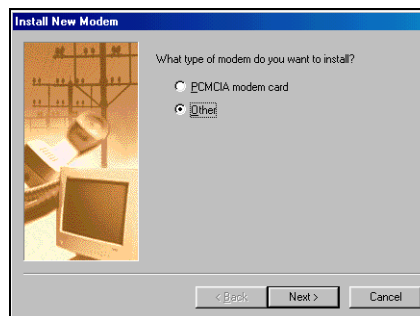


2. In the **Modem Properties** screen, click **Add**.



*Modem Properties screen*

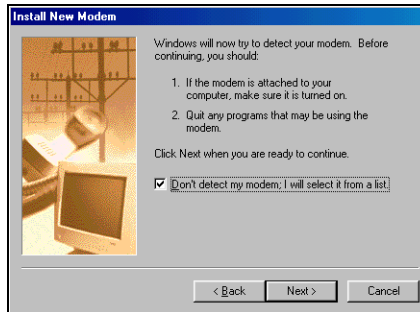
3. The next screen will ask what type of modem you want to install. Select **Other**, then click **Next>**.



*Install New Modem screen*

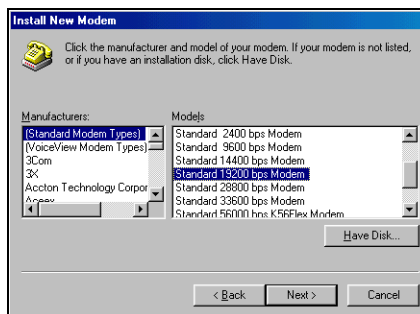


4. In the next screen, check **Don't detect my modem; I will select it from a list**. Click **Next>**.



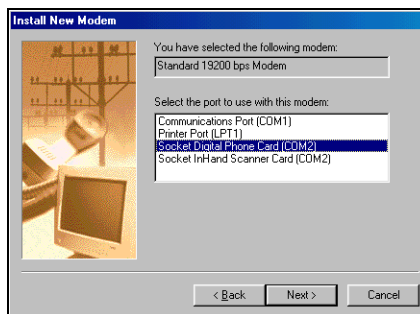
*Modem detection screen*

5. Select **Standard Modem Types** from the **Manufacturers** menu and **Standard 19200 bps Modem** from the **Models** menu. Click **Next>**.



*Modem manufacturer and model screen*

6. In the next screen, select the COM port with the **Socket Digital Phone Card**. Then click **Next>**.



*Modem port screen*

7. When Windows reports that your modem has been successfully set up, click **Finish**.

## STEP 9: Set up Remote Networking

To set up remote networking, you will need your completed Network Information Form.

1. Windows 95/98:

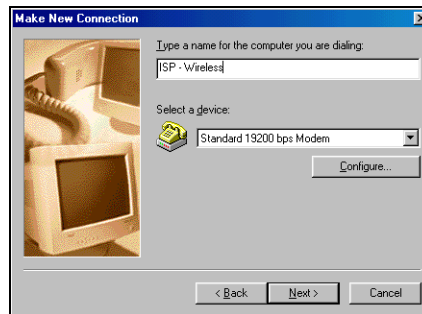
Go to **My Computer | Dial-Up Networking | Make New Connection**.

*Note: For later versions of Windows 98, a **Welcome to Dial-Up Networking** screen will appear, not **Make New Connection**. Click **Next>**.*

Windows Me:

Go to **My Computer | Control Panel | Dial-Up Networking | Make New Connection**.

2. Enter a name for your wireless connection. We recommend using the name “<Your ISP Name> - Wireless.”

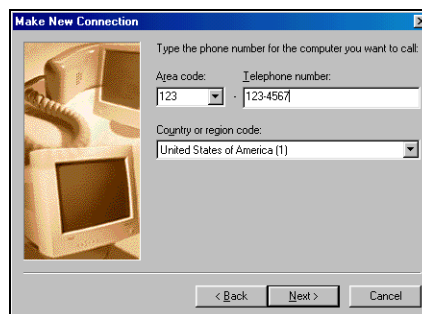


*Make New Connection screen*

Select **Standard 19200 bps Modem** from the modem list. Click **Next>**.

*Note: If **Standard 19200 bps Modem** does not appear in the drop-down menu, you still need to install the modem.*

3. Enter the dial-up number of your office network or ISP. Click **Next>**.



*Phone number screen*

- The next screen will report that you have successfully created the connection. Click **Finish**.

If using DHCP, you are now ready to make a data call. Go to Step 7.

If **NOT** using DHCP, then you must modify your connection's properties to enter any necessary IP addresses.

- To modify the connection's properties, in the **Dial-Up Networking** screen, right-click on the icon with the name of the connection you chose, then select **Properties**.

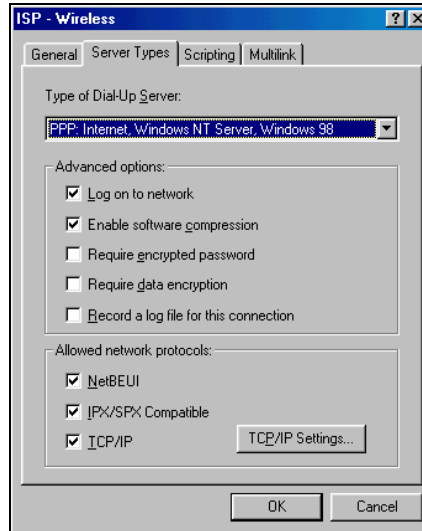


- Windows 95/98:  
Click on **Server Types**, which may appear as either a button or tab.

Windows Me:

Click on the **Networking** tab.

- Using your Network Information Form, enter any necessary settings. To modify IP, DNS, and/or WINS addresses, click on **TCP/IP Settings...**



*Server Types screen*

8. In the **TCP/IP Settings** screen, enter any necessary settings. Click **OK**.

The screenshot shows the 'TCP/IP Settings' dialog box. It has a title bar with a question mark and a close button. The dialog contains two radio button groups. The first group has 'Server assigned IP address' selected, with 'Specify an IP address' below it containing an 'IP address:' label and a text box with '0.0.0.0'. The second group has 'Server assigned name server addresses' selected, with 'Specify name server addresses' below it containing four text boxes: 'Primary DNS: 0.0.0.0', 'Secondary DNS: 0.0.0.0', 'Primary WINS: 0.0.0.0', and 'Secondary WINS: 0.0.0.0'. At the bottom, there are two checked checkboxes: 'Use IP header compression' and 'Use default gateway on remote network'. 'OK' and 'Cancel' buttons are at the very bottom.

*TCP/IP Settings screen*

9. When you return to the main connection properties screen, click **OK**.  
10. Restart your machine to make sure the changes take effect.

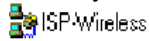
## STEP 10: Make a Data Call

### *Preliminary Checklist*

- Is the card properly inserted into your mobile computer, and is the cable connected securely to your mobile phone?
- Is the phone receiving a digital signal? A **D** or equivalent will appear on the display of some phones.
- Is the mobile phone's signal strength sufficient? A minimum strength of two bars is recommended, but some phones can send data with one. For a better signal, raise the antenna, hold the phone upright, and/or relocate.
- Does your phone have enough battery power for your data call?

### Placing a Data Call

1. In **Dial-Up Networking**, double-click your wireless connection:



2. A **Connect To** screen will appear. Enter your **User Name** and **Password**. Verify the phone number and your location. Click **Connect**.



*Connect To screen*

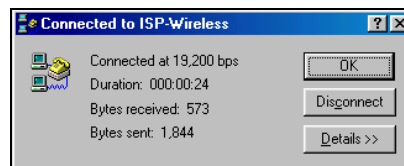
*Note: If you check **Save password**, the information will be saved only after you click **Connect**.*

3. When the computer starts calling, the connection status should appear on both the computer screen and phone display.
4. When the connection status window reports that you have successfully connected, a **Dial-up icon** will appear in the task tray.



### Ending a Data Call

1. Double-click on the **Dial-up icon** in the task tray, shown above.
2. The connection status screen appears. Click **Disconnect**. The **Dial-up icon** will disappear from your taskbar, and your mobile phone will hang up.



*Connection status screen*

## Chapter 6 Windows 2000/XP Setup

This chapter explains Steps 5-10 for Windows 2000/XP notebooks. Before starting Steps 5-10, be sure to complete Steps 1-4, covered in *Chapter 2: Preliminary Setup*. This chapter primarily shows Windows XP screens. Windows 2000 will have functionally equivalent screens. Any significant differences will be noted.

### STEP 5: Insert the Installation CD

Insert the installation CD into the CD drive of your notebook computer.



### STEP 6: Insert the Card and Attach the Phone

1. Plug the DPC into the PC Card adapter, with the purple label on top.  
Do NOT insert the DPC upside down, or damage may occur.



*Insert the DPC into the adapter with the card's colorful label on top.*

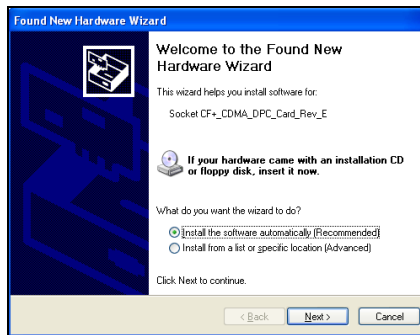
2. With the notebook computer turned ON, insert the combined unit into the PC Card slot. Windows notebooks in most cases will signal that the DPC has been properly inserted via a beep, task tray icon and/or message screen.
3. Connect the free end of the data cable to the data part of the mobile phone. The data port is typically on the bottom or side of the mobile phone and usually is the same port used to charge the phone.



## STEP 7: Install the Software

After inserting the installation CD and the DPC, complete these steps for software installation:

1. The first time you insert the DPC, a device driver or new hardware wizard will appear. Click **Next>**.
2. Follow the wizard to install the DPC drivers, making the appropriate selection below as prompted:
  - a. Windows 2000 — Select **Search for a suitable driver for my device**. In the next screen, select **CD-ROM Drivers**.
  - b. Windows XP — Select **Install the software automatically**. When the **Hardware Installation** warning screen appears, click **Continue Anyway**.



*Found New Hardware Wizard*

3. Follow the remaining instructions until installation is complete.

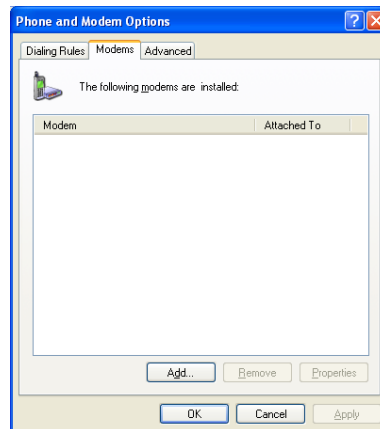
## STEP 8: Set up Windows for a New Modem

1. Windows 2000 — Go to **Start | Settings | Control Panel | Phone and Modem Options**.

Windows XP — Go to **Start | Control Panel | Phone and Modem Options**.

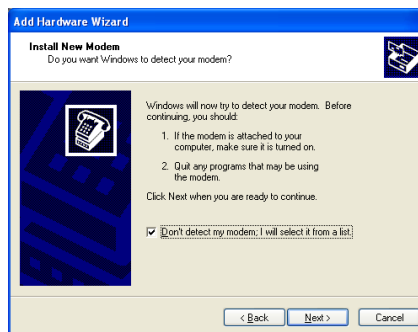


2. Click on the **Modems** tab, then click **Add...**



*Modems screen*

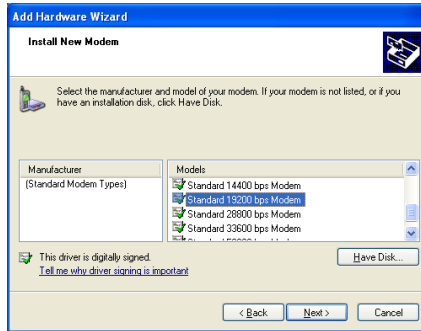
3. A hardware wizard will appear.  
Check **Don't detect my modem; I will select it from a list**. Click **Next>**.



*Modem detection settings screen*

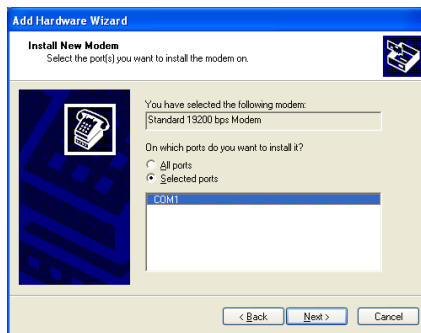


4. Select **Standard Modem Types** from the **Manufacturers** box and **Standard 19200 bps Modem** from the **Models** box. Then click **Next>**.



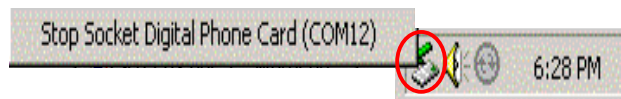
*Modem manufacturer and model screen*

5. In the next screen, select the COM port where you inserted the DPC, then click **Next>**.



*Modem port screen*

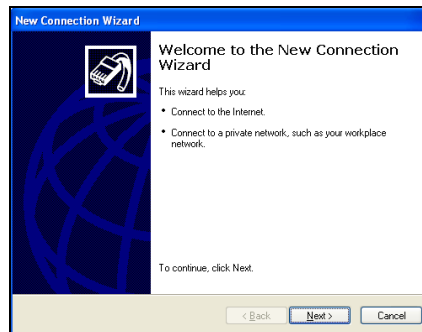
*Note: To determine which COM port is assigned to the Digital Phone Card, click on the **PC Card icon** in the task tray at the bottom of your screen. The DPC should be listed with its COM port.*



6. When Windows reports that modem installation is done, click **Finish**.
7. Your new modem should now be listed in the **Modems** screen inside the **Phone and Modem Options** section of the **Control Panel**.

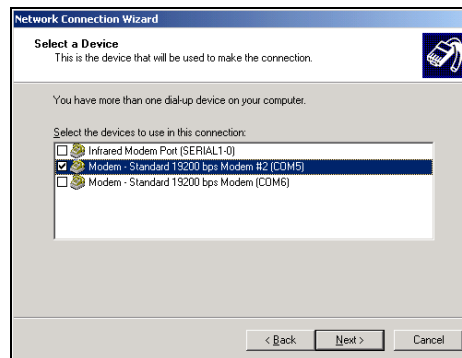
## STEP 9: Set up Remote Networking

1. Windows 2000 — Go to **My Computer | Control Panel | Network and Dial-up Connections | Make New Connection**.  
Windows XP — Go to **Start | Control Panel | Network Connections | Create a new connection**.
2. A connection wizard will appear. Click **Next>**.



*New Connection Wizard*

3. Follow the wizard to set up a new network connection, making the following selections as prompted:
  - a. Windows 2000 —
    - **Network Connection Type:** Select **Dial-up to the Internet**
    - **Select a Device:** Select the 19200 bps modem in the COM port where you inserted the DPC.



*Select a Device screen*

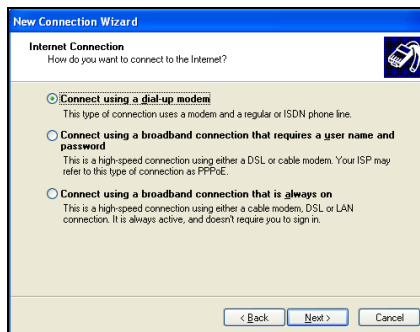
b. Windows XP —

- **Network Connection Type:** Select **Connect to the Internet**
- **Getting Ready:** Select **Set up my connection manually**



*Getting Ready screen*

- **Internet Connection:** Select **Connect using a dial-up modem**



*Internet Connection screen*

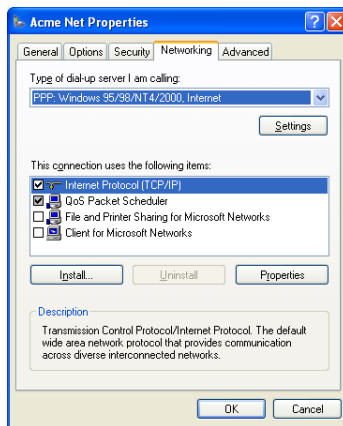
- **Select a Device:** Select the standard 19200 bps modem in the COM port where you inserted the DPC.
4. After completing the wizard, in most cases, your connection is now ready, and you are ready to dial. However, if you have special TCP/IP settings to enter, you still need to configure your connection for these settings.
  5. To configure your connection for TCP/IP settings, follow the directions on the next page.

## Entering TCP/IP Settings

1. Windows 2000 — After completing the wizard, you will return to the **Network and Dial-up Connections** screen. Right-click on the icon for your new connection. In the pop-up menu, select **Properties**.

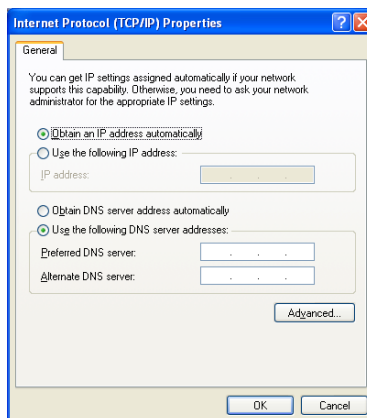
Windows XP — After completing the wizard, the **Connect** screen will appear for your new connection. Click on **Properties**.

2. In the connection properties screen, click on the **Networking** tab.  
To enter TCP/IP settings, check **Internet Protocol** and click on **Properties**.



*Networking screen*

3. In the **Internet Protocol Properties** screen, enter any necessary IP addresses. If needed, click on the **Advanced** button to enter DNS, WINS or other settings.



*Internet Protocol Properties screen*

4. When done entering your settings, click **OK**.  
Restart your computer to make sure the changes take effect.

## STEP 10: Make a Data Call

### *Preliminary Checklist*

- Is the DPC properly inserted into the mobile computer and connected securely to the phone?
- Is the phone receiving a digital signal? A **D** or equivalent will appear on the display of some phones.
- Is the mobile phone's signal strength sufficient? A minimum strength of two bars is recommended, but some phones can send data with one. For a better signal, raise the antenna, hold the phone upright, and/or relocate.
- Does your phone have enough battery power for your data call?

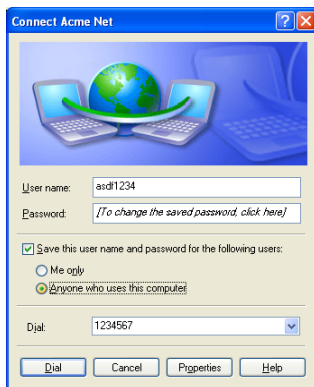
### *Placing a Data Call*

1. **Windows 2000** — Go to **My Computer | Control Panel | Network and Dial-up Connections**. Double-click on the connection you just configured.

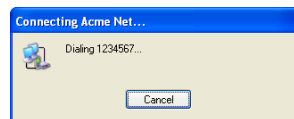
**Windows XP** — Go to **Start | Control Panel | Network Connections**. Double-click on the connection you just configured.

2. Make sure the correct **User Name** and **Password** are entered. Verify the other dialing information, and click **Dial**.

*Note: If you select the **Save password** option, the information will be saved only after you click **Dial**.*



*Connect screen*



*Dialing status screen*

3. When the computer starts calling, you should see the call status on both the computer screen and phone display.
4. When connected, the status screen will report that you are successfully connected, and a connection icon will appear in the task tray.



### *Ending a Data Call*

1. Double-click on the connection icon in the task tray.



2. In the status screen, click **Disconnect**.
3. The task tray icon will disappear, and your phone will hang up.

## Chapter 7 Mac OS Setup



This chapter explains Steps 4-8 for Apple PowerBooks. Before starting Steps 4-8, be sure to complete Steps 1-3, covered in *Chapter 2: Preliminary Setup*.

For more information on configuring your PowerBook, refer to your PowerBook user manual or visit Apple's support website at: [www.apple.com/support/](http://www.apple.com/support/).

### STEP 4: Insert the Card and Attach the Phone

1. Plug the DPC into the PC Card adapter, with the purple label on top. Do NOT insert the DPC upside down, or damage may occur.



*Insert the DPC into the adapter with the card's colorful label on top.*

2. With the notebook computer turned ON, insert the combined unit into the PC Card slot. A card icon will appear on the desktop.
3. After the card icon appears, connect the free end of the data cable to the data part of the mobile phone. The data port is typically on the bottom or side of the mobile phone and usually is the same port used to charge the phone.

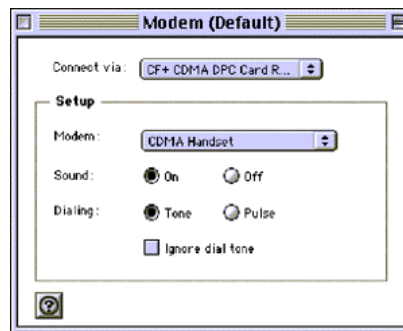
## STEP 5: Insert CD and Launch Installer



1. Insert the installation CD into the CD drive of your notebook computer.
2. Double-click on the **DPC Installer** icon.

## STEP 6: Set up New Modem

1. From the Desktop, go to **Apple Menu | Control Panels | Modem**.
2. From the **Connect via** pull-down menu, select **CF+ CDMA Card Rev x**.  
From the **Modem** pull-down menu, select **CDMA Handset**.



*Modem screen*

3. Close the **Modem Control Panel**. Click **Save** when prompted.



## STEP 7: Set up Remote Networking

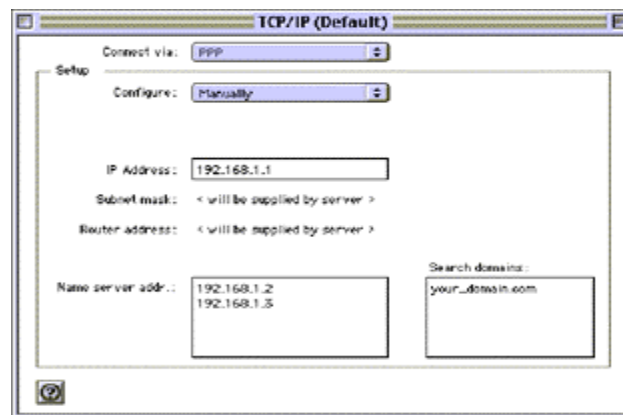
Setting up remote networking for PowerBooks involves both the TCP/IP Control Panel and the Remote Access Control Panel. Before setting up remote networking, you will need your completed Network Information Form.

### TCP/IP Control Panel

1. From the Desktop, go to **Apple Menu | Control Panels | TCP/IP**.
2. Select **PPP** from the **Connect via:** pull-down menu.
3. Choose a configuration method from the **Configure** pull-down menu.

If your network uses DHCP, select **Using PPP Server** from the **Configure** pull-down menu.

Otherwise, if needed, select **Manually** from the **Configure** pull-down menu to enter an address in the **IP Address** field.



*TCP/IP Control Panel*

4. In the **Name server address** field on the bottom left, enter DNS addresses if necessary.
5. In the **Search domains** field on the bottom right, enter the domain name.

*Note: The domain name is the same as the text following “@” of an email address on your network. For example, the domain of [info@socketcom.com](mailto:info@socketcom.com) is “socketcom.com”*

6. Close the **TCP/IP Control Panel** by clicking the **Close Box** in the upper left corner. Choose **Save** when prompted.

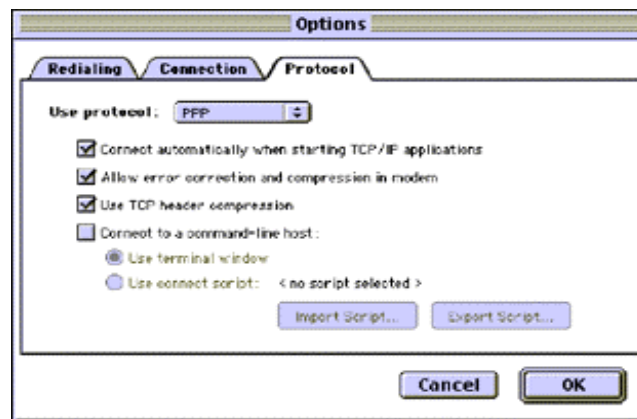
### Remote Access Control Panel

1. From the Desktop, go to **Apple Menu | Control Panels | Remote Access**.
2. Select **Registered User** and enter your user **Name**, **Password** and phone **Number**, following your Network Information Form. Then click on the **Options** button.



*Remote Access Control Panel*

3. In the **Options** dialog box, click on the **Protocol** tab.



*Protocol screen*

4. Check **Connect automatically when starting TCP/IP applications**, then click **OK**.
5. Close the **Remote Access** control panel by clicking on the **Close Box** in the upper left corner. Choose **Save** when prompted.

## STEP 8: Make A Data Call

### *Preliminary Checklist*

- Is the card properly inserted into your mobile computer, and is the cable connected securely to your mobile phone?
- Is the phone receiving a digital signal? A **D** or equivalent will appear on the display of some phones.
- Is the mobile phone's signal strength sufficient? A minimum strength of two bars is recommended, but some phones can send data with one. For a better signal, raise the antenna, hold the phone upright, and/or relocate.
- Does your phone have enough battery power for your data call?

### *Placing a Data Call*

1. From the Desktop, go to **Apple Menu | Control Panels | Remote Access**.

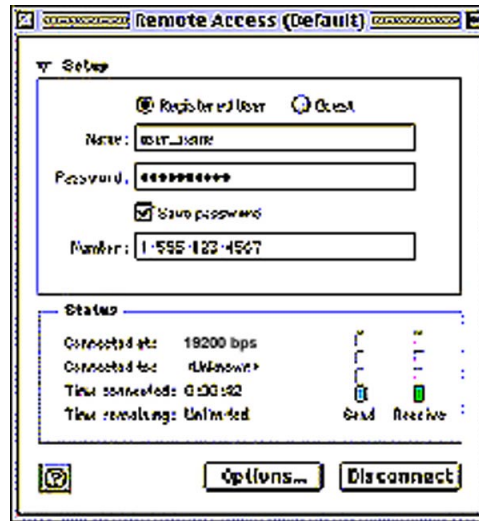


*Remote Access Control Panel*

2. Click **Connect**.
3. When connected, your phone display should show that the call has successfully connected.

### *Ending a Data Call*

1. From the Desktop, go to **Apple Menu | Control Panels | Remote Access**.
2. Click **Disconnect**. Your mobile phone will hang up.



*Remote Access Control Panel*

# Appendix A Specifications

## *Physical Characteristics:*

**CF I/O Card Size:** 1.43 x 1.69 x 0.13 in (36.4 x 42.8 x 3.3 mm)

**Interconnect Cable Length:** 22 in (559 mm)

## *Power Consumption:*

**Inactive:** 0 mA (0 mW)

**Active (typical):** 3 mA (10 mW)

## *Interface Standards:*

**CompactFlash Interface:** CompactFlash I/O, Type I

**With CompactFlash-to-PC Card Adapter:** PCMCIA, Type II

**Serial Communications:** TTL

## *Operating System Support:*

Windows CE v2.11 or greater

Casio BE-300

Windows 95/98/Me/2000/XP

Windows NT 4.0\*

MacOS 8.5.1 – 9.2.1

\*For compatibility information and setup instructions for Windows NT 4.0, please call Socket technical support at 510-744-2720.

## *Mobile Handsets Supported:*

Handset support is determined by the specific cable included in the Digital Phone Card Connection Kit package. Kits are available for various Motorola, Nokia, Qualcomm, Samsung, Siemens, Sprint and Touchpoint digital handsets. Support for other handsets and manufacturers is pending.

For a current compatibility list, visit [www.DigitalPhoneCard.com](http://www.DigitalPhoneCard.com)

## *Software Compatibility:*

Windows COM port

MacOS

## *Hardware Compatibility:*

### *Standard Card (without PC Card adapter):*

All Windows CE-based Pocket PCs, Pocket PC 2002s, and Palm-size PCs including devices from Casio, Compaq, and Hewlett Packard. All Windows CE-based Handheld PC 2000s, Handheld PC Pros, and pen tablets with CompactFlash I/O slot. Casio Cassiopeia BE-300 Pocket Manager.

***With CompactFlash-to-PC Card adapter:***

All Windows CE-based Handheld PCs and pen tablets, Windows 95/98/Me/2000/XP notebooks. All Apple PowerBooks with MacOS 8.5.1 –9.2.1 and Open Transport 2.0.3 or greater.

***Software Included:***

*Socket Digital Phone Card Installation CD*

***Compatible Applications:***

Windows Remote Dial-up, ActiveSync, Pocket Outlook, FTP, Telnet, AvantGO, Citrix, pcANYWHERE, BSquare applications, streaming video, etc.

***Warranty:***

**CompactFlash Card and Non-removable Cable:** Lifetime

**CompactFlash-to-PC Card Adapter:** Three years

***Certification:***

FCC: Part 15, Class B

CE: EN55024:1998

C-TICK s.182

# Appendix B Hints and Tips

## Choosing the Right Applications

Not all applications are ideal for wireless networking. For example, downloading a large file wirelessly takes longer than it does over a landline phone line with a regular modem. Experiment with your applications to determine which ones work best for you wirelessly.

## Using Multiple Modems

Pocket PCs and other Windows CE-based mobile computers can support multiple modems, but you must create a separate dial-up connection for each modem that you use. When making a data call, you must select the dial-up connection for the specific modem in use.

To create multiple dial-up networking connections, follow the steps outlined in the “Set up Remote Networking” section for your mobile computer type, but include the following modifications:

1. In the **Make New Connection** screen, when naming connections, select names that clearly distinguish the modem in use. For example, you might choose "Internet Service Provider-Wireless" and "Internet Service Provider-Landline."
2. In the **Select a modem:** box, choose **Socket DPC Connection** for a wireless connection. Choose your existing modem for a landline connection.

## Appendix C Troubleshooting

### SYMPTOM:

- My computer does not recognize my phone and/or AT commands
- I cannot place a call.

POSSIBLE REASONS	SOLUTION
Your phone is not turned on.	Power ON your phone.
Your phone is not communicating properly with your computer.	Power your phone OFF, then ON again.
The cable between your phone and the DPC is not connected correctly.	Make sure you are using the correct data cable and all connectors are securely fastened.
Other software is using the COM port.	Deactivate the software that is using the COM port. <i>ActiveSync</i> usually uses the COM port.
You have multiple modems set up on your computer, and your software is configured for a modem other than the mobile phone.	Configure your communications software for a DPC connection. Select your mobile phone as the modem.
The COM port is disabled.	Consult your computer's user guide for help managing COM ports.
Your data cable or PC Card adapter are damaged.	Check the pins (metal contacts) on either end of the cable and/or adapter. If any appear bent or unaligned, you may need them replaced.
There is a conflict with COM ports and IRQs.	Consult your computer's user guide for help managing COM ports.
Your computer is waiting for the dial tone.	Make sure that the <b>Wait for dial tone</b> box is unchecked. Refer to the chapter for your computer type to modify your connection's settings.



**SYMPTOM:**

- My call fails immediately
- OR
- I get CALL FAILED on my mobile phone.

POSSIBLE REASONS	SOLUTION
The phone battery has died.	Charge or replace the battery.
Temporary network problems.	Try the call again. CALL FAILED usually disappears after a second try. If you still get CALL FAILED, power your phone OFF, then ON again. If this doesn't resolve the problem, your mobile wireless service may be down.
Your service provider won't accept low bandwidth connections.	Contact your service provider.

**SYMPTOM:**

- I get disconnected in mid-session.

POSSIBLE REASONS	SOLUTION
The mobile signal has faded, or you have traveled outside the mobile coverage area.	Raise the phone antenna. On your phone display, there should be an icon to indicate digital coverage. If you have left the coverage area, return to it and call again.
Your phone battery has run out of power.	Replace or recharge the battery.
The data cable between your mobile phone and your computer is loose or has become disconnected.	Make sure the data cable is securely fastened.
The other modem (your corporate network or Internet Service Provider) has hung up.	Your corporate network or Internet Service Provider may terminate your call for many reasons. Place the call again. If the problem persists, contact your corporate network support or Internet Service Provider.
Your call was dropped.	Try the call again.
You were automatically disconnected due to inactivity.	Some software will terminate a call after a period of inactivity. Check your software for controls on automatic disconnect.

**SYMPTOM:**

- I get a NETWORK NOT RESPONDING message on my mobile phone.

POSSIBLE REASONS	SOLUTION
Your need to update your mobile account.	Call your mobile service provider.

**SYMPTOM:**

- My computer dials but cannot connect.

POSSIBLE REASONS	SOLUTION
You have multiple modems set up on your computer, and the software is configured for a modem other than the mobile phone.	Configure your communications software for a DPC connection. Select your mobile phone as the modem.
You are dialing the wrong number.	Check the number, including the area code. Contact your Internet Service Provider or corporate network support to verify the number.
The number you are dialing is long distance.	Check the area code of the number you are dialing. You may need to add a 1 before the number for long distance calls.
You are using a dialing prefix — such as a 9 — before the phone number.	Remove any dialing prefixes from the phone number.
The modem you are calling is out of service.	Contact your Internet Service Provider or corporate network support to verify the status of their server and modems.
Your phone signal is weak.	Raise the phone antenna. On your phone display, there should be an icon to indicate digital coverage. If you are outside the coverage area, change locations and call again.
Your user name and/or password is incorrect.	Check that you have entered the proper user name and password.
You have entered the wrong domain name.	Check that you have entered the proper domain name.

**SYMPTOM:**

- I get a DISCONNECTED SIGNAL FADED message on my mobile phone.

POSSIBLE REASONS	SOLUTION
You left the mobile coverage area during the call.	Change locations and call again.

**SYMPTOM:**

- My mobile phone shows that the call has connected but my communications software does not.

POSSIBLE REASONS	SOLUTION
The call took so long to establish that the communications software gave up (timed out).	Increase the time-out interval on your communications software and try the call again.

**SYMPTOM:**

- My communications software shows the call has connected, but my mobile phone does not.

POSSIBLE REASONS	SOLUTION
Your call was dropped, but your communications software is still waiting before it gives up on the call.	Cancel the call from your communications software and try again.

**SYMPTOM:**

- I cannot receive voice calls.

POSSIBLE REASONS	SOLUTION
You have set up your mobile phone to receive data or fax calls only.	Follow the instructions that came with your phone to configure for voice calls instead of fax or data calls. You can usually access this feature from the phone's menu.
You are engaged in a data call.	During data calls, you cannot receive voice calls. Hang up and, if necessary, switch your phone back to voice mode.

**SYMPTOM:**

- I cannot receive data calls.

<b>POSSIBLE REASONS</b>	<b>SOLUTION</b>
The phone is not set up to receive data calls.	Follow the instructions that came with your phone to set up the phone to receive data calls. You can usually access this feature from the phone's menu.
Your communications software is not answering in time.	Set your communications software to answer after fewer rings, preferably 0. Consult the software's user manual for instructions.

**SYMPTOM:**

- The data is transmitting slowly.

<b>POSSIBLE REASONS</b>	<b>SOLUTION</b>
CDMA networks have a maximum connection speed of 14,400 bps. GSM networks have a maximum connection speed of 9,600 bps.	Visit Socket's web site at <a href="http://www.DigitalPhoneCard.com">www.DigitalPhoneCard.com</a> for suggestions on how to use your system more efficiently.
Dial-in or web servers have heavy traffic.	Connect at a different time, when your network or ISP is less busy.

**SYMPTOM:**

- I cannot access my email and/or use my web browser.

<b>POSSIBLE REASONS</b>	<b>SOLUTION</b>
You are not connected to your corporate network or Internet Service Provider.	Connect again.
Your dial-up networking settings are incorrect.	Check that your dial-up networking settings match those provided by your office network support or ISP.
Your user name(s) and/or password(s) are incorrect.	Check that you have entered the proper user name and password for your various services, including email accounts and proxy servers.

# Appendix D ISP Resources

Here are a few Internet Service Providers (ISPs) that you may want to choose from to use with the Digital Phone Card. The information in this listing is subject to change without notice.

For the most accurate, latest information on connecting to a specific ISP with a Pocket PC, contact the ISP directly or visit <http://www.pocketpc.com>

<u><i>Name of ISP</i></u>	<u><i>ISP Settings</i></u>
Advanced Systems Network <a href="http://www.as.net/">http://www.as.net/</a>	DNS: 205.167.153.4 Alt DNS: 205.167.153.2 POP3 server: pop3.as.net SMTP mail host: smtp.as.net
AT&T WorldNet Service <a href="http://www.att.com/worldnet/">http://www.att.com/worldnet/</a>	DNS: 204.127.160.2 Alt DNS: 204.127.129.2 POP3 server: postoffice.worldnet.att.net SMTP mail host: mailhost.worldnet.att.net <i>Note: Logon name and password are different from pop3 user name and password.</i>
CompuServe <a href="http://www.compuserve.com/">http://www.compuserve.com/</a>	DNS: 149.174.211.5 Alt DNS: 149.174.213.5 POP3 server: pop.site1.sci.com SMTP mail host: smtp.site1.csi.com <i>Note: See <a href="http://www.craigtech.co.uk/hpc/cservefaq.html">http://www.craigtech.co.uk/hpc/cservefaq.html</a></i>
Drizzle <a href="http://www.drizzle.com">http://www.drizzle.com</a>	DNS: 216.162.192.2 Alt DNS: 216.162.192.3 POP3 server: pop.drizzle.com SMTP mail host: smtp.drizzle.com <i>Note: Logon using &lt;username&gt;-ppp</i>
Earthlink <a href="http://www.earthlink.net">http://www.earthlink.net</a>	DNS: 207.217.126.81 Alt DNS: 207.217.77.82 POP3 server: mail.earthlink.net SMTP mail host: mail.earthlink.net <i>Note: Requires ELN/ before the logon user name. For more help, see: <a href="http://help.earthlink.net/techsupport/other/wince/menu.html">http://help.earthlink.net/techsupport/other/wince/menu.html</a></i>

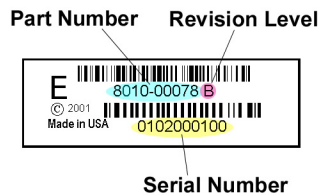
Erols Internet <a href="http://www.erols.com/">http://www.erols.com/</a>	DNS: 205.252.116.10 Alt DNS: 205.252.116.19 POP3 server: pop.erols.com SMTP mail host: smtp.erols.com <i>Note: Add 4-6 commas after dial string if not using K56Flex.</i>
MCI WorldCom Internet <a href="http://www.worldcom.com">http://www.worldcom.com</a>	DNS: 204.70.127.127 Alt DNS: 204.70.127.128 POP3 server: mail.internetmci.com SMTP mail host: mail.internetmci.com
MSN <a href="http://www.msn.com">http://www.msn.com</a>	POP3 server: email not supported (use Hotmail®) SMTP mail host: email not supported (use Hotmail®) <i>Note: Requires MSN/ before user name. Great for browsing the web. Email not supported for Pocket PCs at this time, but Hotmail can be used.</i>
Nocharge.com <a href="http://www.nocharge.com/">http://www.nocharge.com/</a>	DNS: not needed Alt DNS: not needed <i>Note: Username: guest; Password: password; Can use Hotmail or Yahoo Mail for email.</i>
Prodigy Internet <a href="http://www.prodigy.com">http://www.prodigy.com</a>	DNS: 198.83.19.241 Alt DNS: 198.83.19.244 POP3 server: pop.prodigy.net SMTP mail host: smtp.prodigy.net
Southwestern Bell <a href="http://www.swbell.net">http://www.swbell.net</a>	DNS: 151.164.1.8 Alt DNS: 151.164.1.7 POP3 server: postoffice.swbell.net SMTP mail host: mail.swbell.net
Sympatico-British Columbia <a href="http://www.bc.sympatico.ca">http://www.bc.sympatico.ca</a>	DNS: 204.174.64.1 Alt DNS: 205.174.64.2 POP3 server: pop.bc.sympatico.ca SMTP mail host: smtp.bc.sympatico.ca
Verio <a href="http://www.verio.com">http://www.verio.com</a>	DNS: 129.250.35.250 Alt DNS: 129.250.35.251 POP3 server: pop.veriomail.com SMTP mail host: smtp.veriomail.com
Verizon Online <a href="http://www.verizon.net">http://www.verizon.net</a>	DNS: 206.124.64.253 Alt DNS: 206.124.65.253 POP3 server: mail.gte.net SMTP mail host: smtp.gte.net <i>Note: Requires GTE/ before user name.</i>

# Appendix E Technical Support

If you have technical problems with the Digital Phone Card, please refer to Appendix C, “Troubleshooting.” You can also visit Socket’s online forum for users to discuss technical support issues with each other at: [www.socketforum.com](http://www.socketforum.com)

If problems persist, feel free to contact Socket’s technical support department for help, prepared with the following information:

- The part number (including revision level) and serial number of your DPC. See the diagram below.
- The manufacturer, model number, and operating system version of your mobile computer
- The manufacturer, model number and carrier of your mobile phone
- If applicable, the version of Windows on your host PC
- What you did to try to correct the problem



To reach Socket’s technical support department:

- Visit [www.DigitalPhoneCard.com](http://www.DigitalPhoneCard.com)
- Email [techsupport@socketcom.com](mailto:techsupport@socketcom.com)
- Phone 510-744-2720
- Fax 510-744-2727

Please refrain from disassembling the Digital Phone Card. Disassembly will void the product warranty.

## Limited Warranty

Socket Communications Incorporated (Socket) warrants this product against defects in material and workmanship, under normal use and service, for the following periods from the date of purchase:

- Plug-in card: Lifetime (Three years if not registered)
- Non-removable cable: Lifetime (Three years if not registered)
- CompactFlash-to-PC Card adapter: 90 days

Incompatibility is not a defect covered by Socket's warranty. During the warranty period, Socket will, at its option, repair or replace the defective product at no charge when furnished with proof of retail purchase, provided that you deliver the product to Socket or to an authorized Socket Service Center.

The returned product must be accompanied by a return material authorization (RMA) number issued by Socket or by Socket's Authorized Service Center. If you ship the product, you must use the original container or equivalent and you must pay the shipping charges to Socket. Socket will pay shipping charges back to any location in the contiguous United States. This warranty applies only to the original retail purchaser and is not transferable.

Socket may, at its option, replace or repair the product with new or reconditioned parts and the returned product becomes Socket's property. Socket warrants the repaired or replaced products to be free from defects in material or workmanship for ninety (90) days after the return shipping date, or for the duration of the original warranty period, whichever is greater.

This warranty does not cover the replacement of products damaged by abuse, accident, misuse or misapplication, nor as a result of service or modification other than by Socket.

**SOCKET IS NOT RESPONSIBLE FOR INCIDENTAL OR CONSEQUENTIAL DAMAGES RESULTING FROM BREACH OF ANY EXPRESS OR IMPLIED WARRANTY, INCLUDING DAMAGE TO PROPERTY AND, TO THE EXTENT PERMITTED BY LAW, DAMAGES FOR PERSONAL INJURY. THIS WARRANTY IS IN LIEU OF ALL OTHER WARRANTIES INCLUDING IMPLIED WARRANTIES OF MERCHANTABILITY AND FITNESS FOR A PARTICULAR PURPOSE.**

Some states do not allow limitation of implied warranties, or the exclusion or limitation of incidental or consequential damages, so that the above limitations or exclusions may not apply to you. This warranty gives you specific legal rights and you may also have other rights which vary from state to state.

This product may contain fully tested, recycled parts, warranted as if new. For warranty information, phone (510) 744-2700.



## Limited Software Warranty

**LIMITED WARRANTY.** SOCKET warrants that the original disk or CD ROM is free from defects for 90 days from the date of delivery of the SOFTWARE.

**CUSTOMER REMEDIES.** SOCKET'S entire liability and your exclusive remedy shall be, at SOCKET'S option, either (a) return of the price paid or (b) replacement of the SOFTWARE which does not meet SOCKET'S Limited Warranty and which is returned to SOCKET with a copy of your receipt. Any replacement SOFTWARE will be warranted for the remainder of the original warranty period or 30 days, whichever is longer. THESE REMEDIES ARE NOT AVAILABLE OUTSIDE OF THE UNITED STATES OF AMERICA.

**NO OTHER WARRANTIES.** SOCKET disclaims all other warranties, either express or implied, including but not limited to implied warranties of merchantability and fitness for a particular purpose, with respect to the SOFTWARE and the accompanying written materials. This limited warranty gives you specific legal rights. You may have others which vary from state to state.

**NO LIABILITY FOR CONSEQUENTIAL DAMAGES.** In no event shall SOCKET or its suppliers be liable for any damages whatsoever (including, without limitation, damages for loss of business profits, business interruption, loss of business information, or other pecuniary loss) arising out of the use of or inability to use the SOFTWARE, even if SOCKET has been advised of the possibility of such damages. Because some states do not allow the exclusion or limitation of liability for consequential or incidental damages, the above limitation may not apply to you.

**EXPORT LAW ASSURANCES.** You may not use or otherwise export or reexport the SOFTWARE except as authorized by United States law and laws of the jurisdiction in which the SOFTWARE was obtained. In particular, but without limitation, none of the SOFTWARE may be used or otherwise exported or reexported (a) into (or to a national or resident of) a United States embargoed country or (b) to anyone on the U.S. Treasury Department's list of Specially Designated Nationals or the U.S. Department of Commerce's Table of Denial Orders. By using the SOFTWARE, you represent and warrant that you are not located in, under control of, or a national or resident of any such country or on any such list.

**GOVERNMENT END USERS.** If the SOFTWARE is supplied to the U. S. Government, the SOFTWARE is classified as "restricted computer software" as defined in clause 52.227-19 of the FAR. The U. S. Government 's rights to the SOFTWARE are as provided in clause 52.227-19 of the FAR.

**CONTROLLING LAW AND SEVERABILITY.** This License shall be governed by the laws of the United States and the State of California. If for any reason a court of competent jurisdiction finds any provision, or portion thereof, to be unenforceable, the remainder of this License shall continue in full force and effect.

## Copyright Notice

Copyright © 2002 Socket Communications, Inc. All rights reserved.

Socket, the Socket logo and Battery Friendly are registered trademarks of Socket Communications, Inc. Digital Phone Card is a trademark of Socket Communications, Inc. All other brand and product names are trademarks of their respective holders.

The Digital Phone Card includes technology licensed under United States Patent Nos. 4,543,450, 4,603,320, 4,686,506, and 4,972,470.

Reproduction of the contents of this manual without the permission of Socket Communications is expressly prohibited. Please be aware that the products described in this manual may change without notice.

Feel free to contact SOCKET COMMUNICATIONS at:

**Socket Communications, Inc.**  
37400 Central Court  
Newark, CA 94560

Phone: (510) 744-2700  
Fax: (510) 744-2727.  
Technical support: (510) 744-2720.

***Important! Before calling for technical support, please prepare yourself with the information listed in Appendix E, "Technical Support."***

Other than the above, Socket Communications can assume no responsibility for anything resulting from the application of information contained in this manual.

Socket Communications requests that you refrain from any applications of the Socket Digital Phone Card that are not described in this manual. Socket Communications also requests that you refrain from disassembling the Digital Phone Card. Disassembly of this device will void the product warranty.

You can track new product releases, software updates and technical bulletins by visiting Socket's web page at: [www.DigitalPhoneCard.com](http://www.DigitalPhoneCard.com).

## Regulatory Compliance

The Socket Digital Phone Card is designed to be compliant with the rules and regulations in locations where they are sold and will be labeled as required. This product is type approved — users are not required to obtain license or authorization before using.

### Radio Frequency Interference Requirements

This device complies with part 15 of the FCC rules. Operation is subject to the following conditions: (1) This device may not cause harmful interference, and (2) this device must accept any interference received, including interference that may cause undesired operation.

This equipment is also ETS 300 328, ETS 300 826 and C-TICK compliant. These limits are designed to provide reasonable protection against harmful interference when the equipment is operated in a commercial environment.

This equipment generates, uses, and can radiate radio frequency energy and, if not installed and used in accordance with the instruction manual, may cause harmful interference to radio communications. Operation of this equipment in a residential area is likely to cause harmful interference in which case the user will be required to correct the interference at his or her own expense.

If this equipment does cause harmful interference to radio or television reception, which can be determined by turning the equipment off and on, the user may try to correct the interference by one or more of the following measures:

- Reorient or relocate the receiving antenna of the radio or television.
- Increase the distance separating the equipment and the receiver.
- Connect the equipment to an outlet on a different branch circuit than that of the receiver.
- Consult the dealer or an experienced radio/TV technician for help.

The user may find the following booklet helpful:

*How to Identify and Resolve Radio-TV Interference Problems*

This booklet is available from the U.S. Government Printing Office, Washington, D.C. 20402.

## **Radio Frequency Interference Requirements – Canada**

This Class B digital apparatus meets the requirements of the Canadian Interference-Causing Equipment Regulations. Cet appareil numérique de la Classe B respecte toutes les exigences du Règlement sur le Matériel Brouilleur du Canada.

NOTE: To comply with FCC and Industry Canada exposure requirements, this device is approved for operations in a user's hand when there is a distance of 20 cm or more between the device antenna and the user's body.

## **CE Marking & European Union Compliance**

Products intended for sale within the European Union are marked with a CEMark which indicates compliance to applicable Directives and European Normes (EN), as follows. Amendments to these Directives or ENs are included: Normes (EN), as follows:

### **Applicable Directives:**

- Electromagnetic Compatibility Directive 89/336/EEC
- Low Voltage Directive 73/23/EEC

### **Applicable Standards:**

- EN 55 022 – Limits and Methods of Measurement of Radio Interference Characteristics of Information Technology Equipment.
- EN 50 082-1 – Electromagnetic Compatibility – General Immunity Standard, Part 1: Residential, Commercial, Light Industry.
- IEC 801.2 – Electromagnetic Compatibility for Industrial Process Measurement and Control Equipment, Part 2: Electrostatic Discharge Requirements.
- IEC 801.3 – Electromagnetic Compatibility for Industrial Process Measurement and Control Equipment, Part 3: Radiated Electromagnetic Field Requirements.
- IEC 801.4 - Electromagnetic Compatibility for Industrial Process Measurement and Control Equipment, Part 4: Electrical Fast Transients Requirements.
- EN 60 950 + Amd 1 + Amd 2 – Safety of Information Technology Equipment Including Business Equipment.



6410-00145 1

Printed in U.S.A.

## Free Manuals Download Website

<http://myh66.com>

<http://usermanuals.us>

<http://www.somanuals.com>

<http://www.4manuals.cc>

<http://www.manual-lib.com>

<http://www.404manual.com>

<http://www.luxmanual.com>

<http://aubethermostatmanual.com>

Golf course search by state

<http://golfingnear.com>

Email search by domain

<http://emailbydomain.com>

Auto manuals search

<http://auto.somanuals.com>

TV manuals search

<http://tv.somanuals.com>