



Sonic Alert

America's Leader in Visual Alerting Systems.

WIRELESS DOORBELL SIGNALER MODEL DB100

SONIC ALERT'S 5 YEAR LIMITED WARRANTY

The Wireless Doorbell Signaler Model DB100 is warranted against manufacturing defects in materials and workmanship for five (5) years from the date of purchase. Within this period Sonic Alert will replace at our option the DB100 without charge for parts and labor. Simply send the DB100 (postpaid) and a copy of your sales slip as proof of purchase to:

Sonic Alert Inc., 1050 E. Maple Road, Troy MI 48083

Operation

The state-of-the-art Doorbell Signaler will alert you when someone comes to visit. The DB100 is the only doorbell signaler that does not require wires and can be installed in seconds. DB100 signaler will alert you that someone is at your door by flashing a light plugged into it and any other Sonic Alert remote receivers you may have. The DB100 is designed to work in homes with or without an existing doorbell or chime.

Selecting Flash Rate

Other features include a selectable number of flashes (5 or 10), and different flash code for front door, rear door, or intercom. Additional sensors (DB100T - sold separately) can be used for 2nd door. There is also a built-in chime for hearing members of the family. The DB100 receives an RF (radio) signal from the DB sensor, and flashes the light plugged into the built-in outlet of the signaler. Use a 300-watt or less incandescent lamp only. The signaler can send a signal to all Sonic Alert remote receivers. **Note: Must be used only with Sonic Alert receivers for proper operation. Other manufacturers' products are not reliable with our products.**

DB100 Signaler DB Sensor

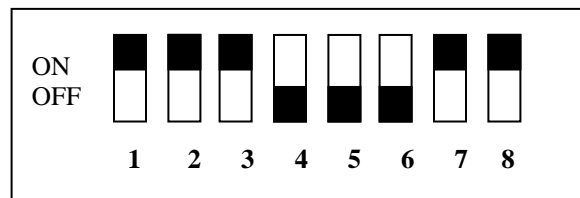


INSTALLATION

To install the DB100, follow the diagrams and instructions on the following page that match the type of installation you need for your home. If the installation follows diagram 1, a 12-volt alkaline battery is required in the DB sensor.

Please check the switches on your DB Sensor before installing. Do not change switches 1-6. These are pre set.

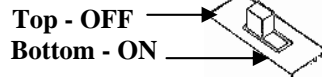
Setting the Dip Switches:



DB Sensor settings (smaller unit) for dip switches 1 thru 6 are set at the factory and only need to be changed if your neighbor has a DB100 or DB200. The 8 dip switches should be set as follows:

- a) 1 thru 3 dip switches are set in the ON position and 4 thru 6 are set in the OFF position. If you need to change the dip switch settings to avoid interference with your neighbors, make sure you change the DB100 Signaler to match the DB Sensor.
- b) The 7th switch is for when you are using 2 sensors; this switch determines the settings for front or back door. If using for one door only set this switch in the ON position. At this setting your unit will flash at a fast rate and will make a ding/dong sound. If using 2 sensors, one for the front door and one for the back door, the setting for the 2nd sensor would be in the OFF position. In this position the front door will flash at a different flash rate than the back door. In the OFF position your back door sensor will flash at a slow rate with a ding/dong sound.
- c) The 8th switch determines the number of flashes when someone is at your door. In the ON position your unit will flash 5 times and in the OFF position your unit will flash 10 times. This feature is wonderful when you have an extra sensor for the back door. One sensor would be set in the ON position and the other would be set in the OFF position.

Setting the Audio Switch:



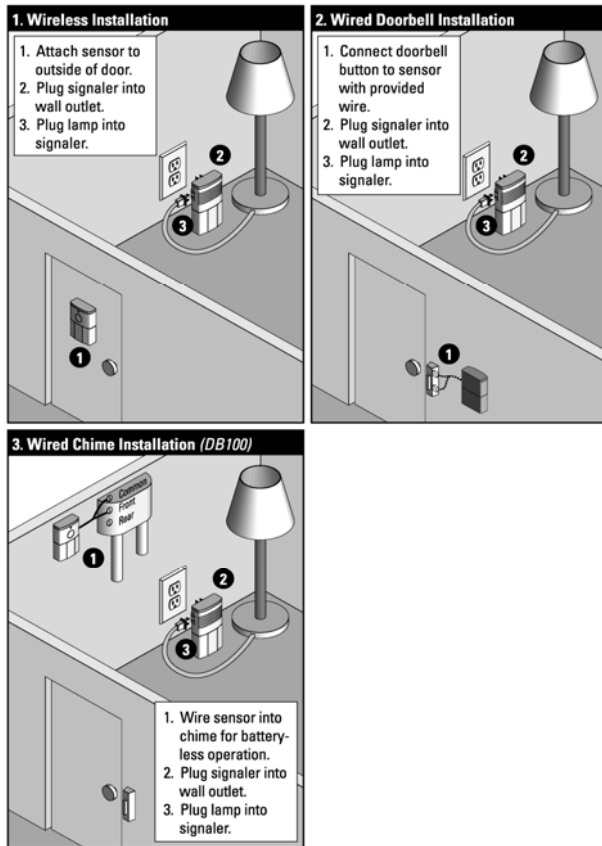
Located on the DB100 Signaler (larger unit):

The speaker switch allows you to turn the Audio Alarm ON or OFF. ON is down and OFF is up.

Multi-Function Input Jack:

Located on the right side of the DB Sensor, this input jack is for installations as shown below in diagram 2 & 3.

DB100 INSTALLATION DIAGRAMS



Battery free installation (diagram 3):

Use wire provided, plug into jack outlet on side of Transmitter. Remove chime cover and connect the red and yellow wires to chime box terminal screws common and front.

Troubleshooting & Help:

If you've followed the directions and are still having problems please try the following suggestions:

- 1) Check battery in the sensor. Must be a 12-volt alkaline type.
- 2) Check dip switch settings. Both the sensor and the signaller must match as shown in figure 1.1 above.
- 3) Check outlet for power.
- 4) Move the Signaler to an outlet closer to the sensor unit.
- 5) If using the Multi-Function input jack make sure that the wires are not touching each other. See diagram number 2 & 3 for proper installation.
- 6) Check that sensor is not further than 50 feet from the receiver.
- 7) Do not place sensor on steel doors or steel door frames.

For Technical help call 1-248-577-5400

M-F 8:00 a.m. – 5:00 p.m. Eastern Time

Or e-mail us with your questions at sonic-info@sonicalert.com

Warranty:

Thank you for purchasing this high quality Sonic Alert product. We hope you will have many years of satisfied use. This Sonic Alert product comes with a limited **5-year warranty** so please retain your receipt in a safe place for possible future reference; you will need in the event of warranty service.

Sonic Alert, Inc.

1050 East Maple Rd.

Troy, MI 48083

V/TTY 1-248-577-5400 fax 248-577-5433

E-mail: sonic-info@sonicalert.com

Web Site: www.SonicAlert.com

REV 1.5 (2008)



This device complies with Part 15 of the FCC Rules and with RSS-210 of Industry Canada. Operation is subject to the following two conditions:

- (1) This device may not cause harmful interference, and
- (2) This device must accept any interference received, including interference that may cause undesired operation.

WARNING: Changes or modifications not expressly approved by the party responsible for compliance could void user's authority to operate the equipment.

Free Manuals Download Website

<http://myh66.com>

<http://usermanuals.us>

<http://www.somanuals.com>

<http://www.4manuals.cc>

<http://www.manual-lib.com>

<http://www.404manual.com>

<http://www.luxmanual.com>

<http://aubethermostatmanual.com>

Golf course search by state

<http://golfingnear.com>

Email search by domain

<http://emailbydomain.com>

Auto manuals search

<http://auto.somanuals.com>

TV manuals search

<http://tv.somanuals.com>