

BatteryShip.com

PL-383450 Sony Clie PEG-TJ25/U Battery Installation Instructions

PLEASE NOTE: Patience and care, along with moderate technical and hand tool ability, are required for the successful replacement of a Clie battery. **Excessive force may result in damage to your PDA.** The instructions below come with no warranty or guarantee. By utilizing these instructions, you agree to hold Batteryship.com blameless and unaccountable for any and all damages, problems, or personal injuries that may or may not arise by your use of these instructions. Replacing your Clie battery may void any warranty you have on your Clie. **Please read all instructions and back up your data BEFORE replacing the battery.**

If your Clie is a different model number, use these instructions as a reference and consult your owner's manual or a technician if necessary.

Included Mini Flathead Screwdriver



Included Plastic Flathead Screwdriver



Step 1.



Remove the two "Y Head" three pointed screws below the label on the back of the device, as shown, using the included mini flathead screwdriver. (Your tools may look different than the picture shown.) You can also use a "Y Head" screwdriver if you have one. Set the screws aside for reassembly.

Step 3.



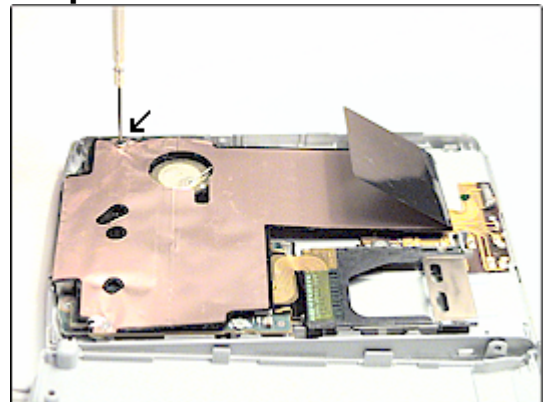
Use the plastic flathead screwdriver or any small flathead screwdriver (plastic recommended - metal may scratch) to separate the back case from the front by CAREFULLY prying around the device. There are clips on all sides of the device holding the front and back together. Be careful not to break them when prying.

Step 2.



Remove the two Phillips screws from the upper sides of the device, as shown, using the same mini flathead screwdriver or a 000 Phillips screwdriver. Set the screws aside for reassembly.

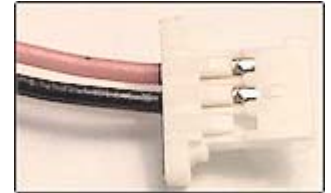
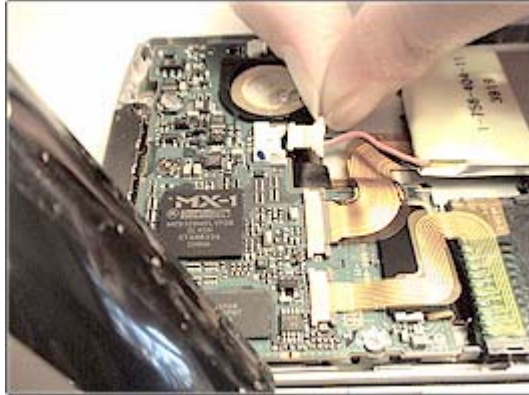
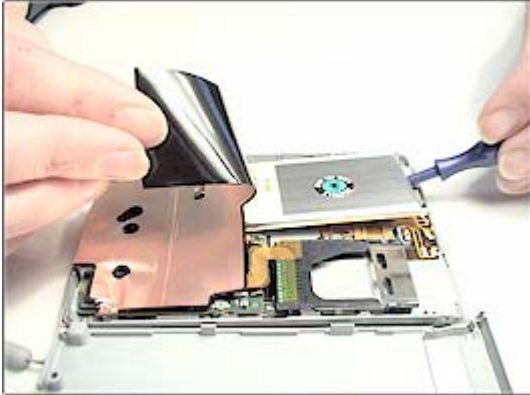
Step 4.



Lift off the back cover. Remove ONLY the Phillips screw shown in the picture above, then fold back the protective copper foil (taking care not to tear or damage it) so that the battery can be reached. Set the screw aside for reassembly.

(Steps 5 and 6 Continued on Back)

Step 5.



Remove your old battery from its seat, using the enclosed plastic flathead screwdriver to assist (as shown) if necessary. Leave the connector plugged in for this process. The battery may be taped or glued in, so pry under it GENTLY until it comes loose. Take care not to break the old battery.

Disconnect the old battery at the connector by CAREFULLY pulling outward on the connector with your thumb and forefinger. Be very sure that you are pulling outward on only the part of the connector that comes out, as shown. Also, note whether the metal connectors shown in the picture above are facing up or down so you can connect your new battery correctly.

Step 6.



Making sure that your battery is facing the right direction (connector towards the bottom of the Clie), and that the metal connectors on the white connector plug (shown in Step 5) are correctly oriented, connect the new battery by pressing the connector at the end of the ribbon cable into the socket as shown. You may need to use the tip of the screwdriver or stylus to press the connector in, but DO NOT press too hard or try to force the pieces together. They will fit easily when correctly aligned. Position the new battery in its seat, placing the protective foil back over the battery and screwing the single internal screw back in to hold it in place (shown in Step 4).

Replace the back cover and screw the four external screws back in. FULLY CHARGE your new battery before use. (Allow at least three hours. For quality control, we pre-charge many of our batteries, so yours may require less time.)

PLEASE NOTE: Our tools fit the majority of Clie's, but some devices may have different screws installed for various reasons. If our tools do not fit your device, you may have the appropriate tool in a tool kit you already own. You can also check your local hardware or electronics store if you do not have the right tool at home.

Free Manuals Download Website

<http://myh66.com>

<http://usermanuals.us>

<http://www.somanuals.com>

<http://www.4manuals.cc>

<http://www.manual-lib.com>

<http://www.404manual.com>

<http://www.luxmanual.com>

<http://aubethermostatmanual.com>

Golf course search by state

<http://golfingnear.com>

Email search by domain

<http://emailbydomain.com>

Auto manuals search

<http://auto.somanuals.com>

TV manuals search

<http://tv.somanuals.com>