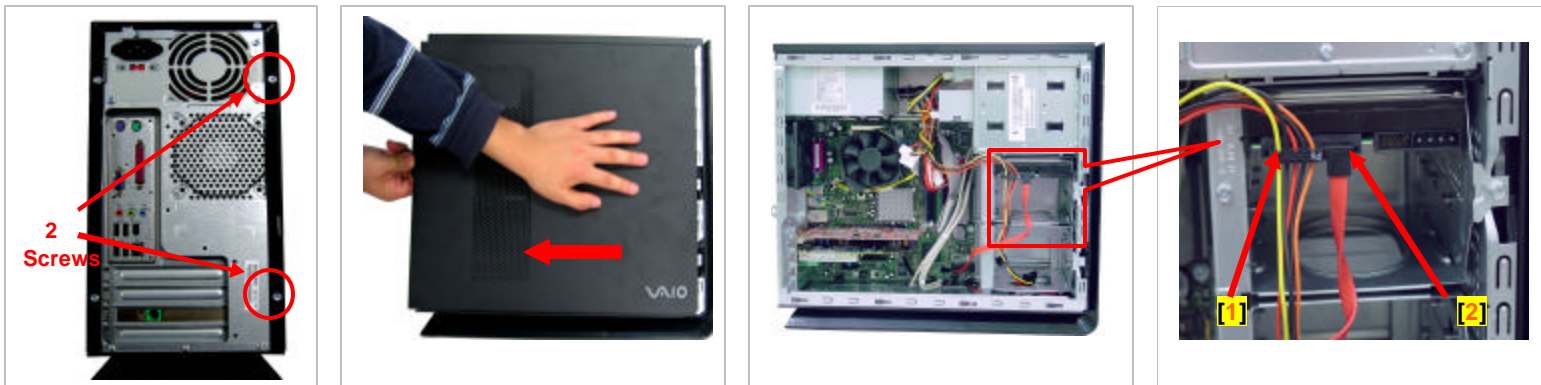


IMPORTANT! PLEASE READ BEFORE YOU START

These easy instructions are intended to guide you through the replacement process.

- ✓ To avoid electric shock please make sure product is turned off and disconnected from the power source. Remove jewelry before you begin work to avoid scratching the surface of your desktop computer.*
- ✓ Place your desktop computer on a clean, stable and covered surface to avoid damage to the computer's case.*
- ✓ Follow the ESD (Electrostatic Discharge) damage prevention instructions:
 - Hold parts by the edges, away from exposed circuitry when possible.
 - Do not walk around excessively as this promotes static build-up.
- ✓ The appearance of the electronic components shown in the illustrations may be different from the components shipped. This slight difference does not affect the accuracy of these instructions.

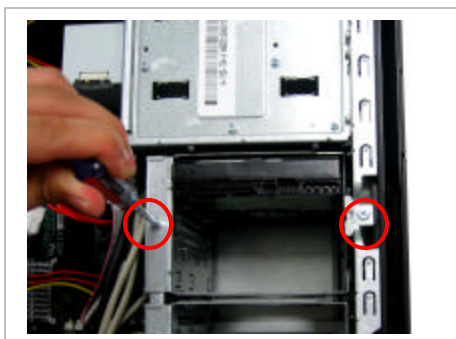
* Sony is not responsible for any loss of data associated with your computer or any damage caused by incorrect handling of the computer under these procedures. The terms of your Sony Limited Warranty continue to apply.



Step 1. CAUTION! ⚠ **Disconnect the power cord. Failure to do so can result in damage to the unit or personal injury.**

Using the enclosed magnetic screwdriver, remove the two (2) indicated screws, loosening the chassis panel cover. Rotate the unit so the panel with the vents is facing you. Remove the panel and set it aside.

Step 2. Locate the power cable [1] and serial ATA cable [2]. Proceed and disconnect these cables from the hard drive. **IMPORTANT! Some force may be required to initiate removal of the cables. Grasp the cable connectors where possible and take caution not to damage the cables.** Pull with equal force on both sides of the cable connectors to remove them.



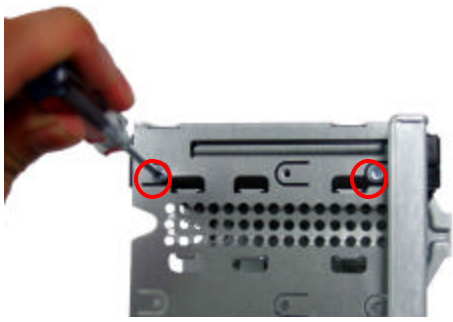
Step 3. Using the enclosed magnetic screwdriver, remove the two (2) indicated screws from the hard drive bracket.



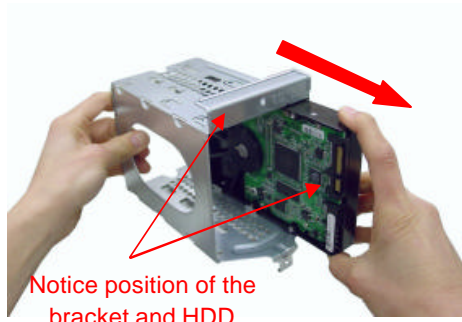
Step 4. Pull the hard drive bracket enclosure from the unit in the direction of the arrow.



Step 5. Using the enclosed magnetic screwdriver, remove the two (2) indicated screws and set aside.

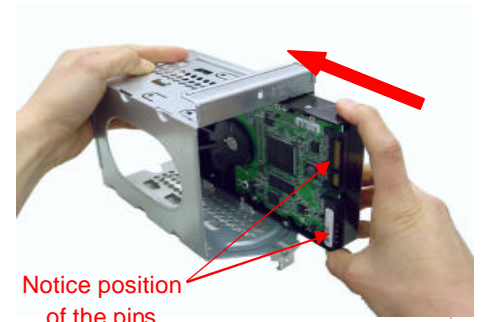


Step 6. Remove the indicated screws from the opposite side of the bracket and set aside.



Notice position of the bracket and HDD

Step 7. Pull out the original hard drive from the bracket in the direction of the arrow. **IMPORTANT!** Take note of the original position of the drive inside the bracket.



Notice position of the pins

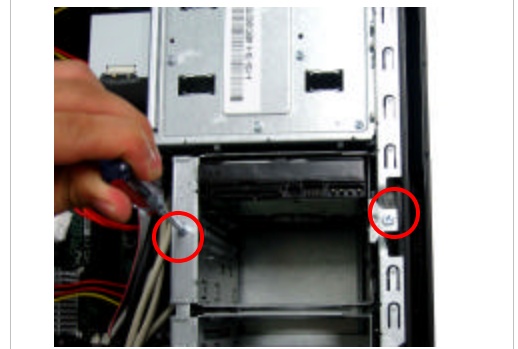
Step 8. Gently insert the new hard drive into the bracket in the direction of the arrow. Align the new drive in the same position as the original hard drive.



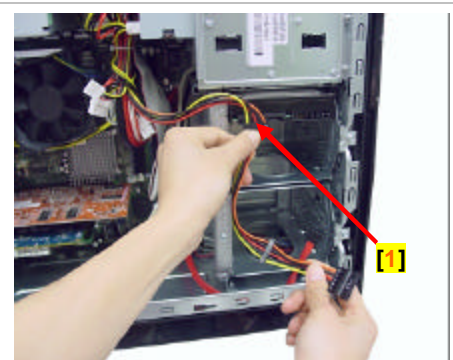
Step 9. Reinstall the four (4) previously removed screws into indicated positions on both sides of the bracket. **IMPORTANT!** Do not over tighten the screws!



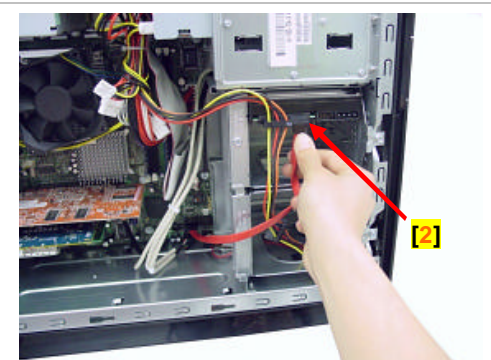
Step 10. Slide the hard drive bracket enclosures back inside the unit, making sure all holes are lined up.



Step 11. Using the enclosed magnetic screwdriver, reinstall the two (2) previously removed screws. **IMPORTANT!** Do not over tighten the screws.



Step 12. Gently reconnect the previously removed power connector marked P8 [1] into the hard drive as indicated above.



Step 13. Gently reconnect the serial ATA cable [2] into the hard drive as indicated above.



Step 14. Re-assemble the chassis panel cover. And reinstall the screws removed in step 1. Connect your PC and continue with the recovery following the instructions on the back of the recovery disk's case. Return the original hard drive to Sony following the included shipping instructions.

Free Manuals Download Website

<http://myh66.com>

<http://usermanuals.us>

<http://www.somanuals.com>

<http://www.4manuals.cc>

<http://www.manual-lib.com>

<http://www.404manual.com>

<http://www.luxmanual.com>

<http://aubethermostatmanual.com>

Golf course search by state

<http://golfingnear.com>

Email search by domain

<http://emailbydomain.com>

Auto manuals search

<http://auto.somanuals.com>

TV manuals search

<http://tv.somanuals.com>