


"WALKMAN" is a registered trademark of Sony Corporation to represent Headphone Stereo products.

 is a trademark of Sony Corporation.

Radio Cassette-Player

Operating instructions



WM-FX197

©2004 Sony Corporation Printed in China

For customers in the USA Product registration

Please register this product on line at www.sony.com/productregistration.
<<http://www.sony.com/productregistration>>

Proper registration will enable us to send you periodic mailings about new products, services, and other important announcements. Registering your product will also allow us to contact you in the unlikely event that the product needs adjustment or modification. Thank you.

Owner's Record

The model number is located at the rear and the serial number is located inside the cassette holder. Record these numbers in the space provided below. Refer to them whenever you call upon your Sony dealer regarding this product.
Model No. WM-FX197
Serial No. _____

INFORMATION

This device complied with Part 15 of the FCC Rules. Operation is subject to the following two conditions: (1) This device may not cause harmful interference, and (2) this device must accept any interference received, including interference that may cause undesired operation.

You are cautioned that any changes or modifications not expressly approved in this manual could void your authority to operate this equipment.

Preparations

To Insert batteries **A**

Note

- The BATT indicator dims when the batteries become weak or exhausted. Replace them with new ones.

Playing a tape

- Set FM/AM/TAPE (RADIO OFF) to TAPE (RADIO OFF).
- Press ◀ PLAY.

To	Press
Stop playback	■ (stop)
Wind rapidly*	▶▶ or ◀◀

* Be sure to press ■ (stop) after the tape has been wound or rewind.

To limit the maximum volume automatically
Set AVLS (Automatic Volume Limiter System) to LIMIT. The maximum volume is kept down to protect your ears, even if you turn the volume up.

To emphasize sound
Set the OFF/MEGA BASS switch to MEGA BASS to produce deep and powerful sound.

Note

- Do not open the cassette holder while the tape is running.

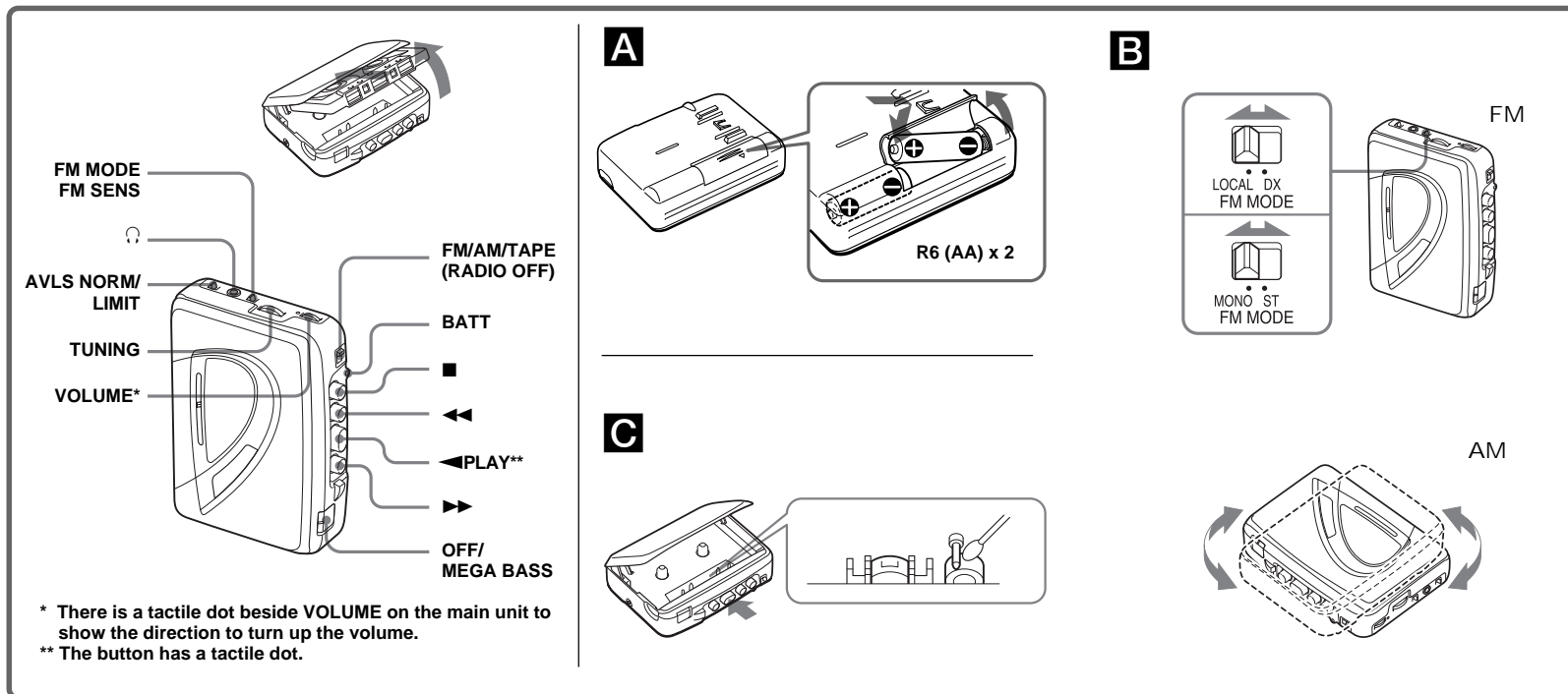
Listening to the radio

- Set FM/AM/TAPE (RADIO OFF) to AM or FM.
- Turn TUNING to tune to the station you want.

To turn off the radio
Set FM/AM/TAPE (RADIO OFF) to TAPE (RADIO OFF).

To improve broadcast reception **B**

For FM, extend the headphones/earphones cord (antenna) or adjust FM MODE.
For AM, reorient the unit itself.




* There is a tactile dot beside VOLUME on the main unit to show the direction to turn up the volume.
** The button has a tactile dot.

Troubleshooting

The volume cannot be turned up.

- AVLS is set to LIMIT.

Poor tape playback quality.

- Clean the headphones/earphones plug.
- Clean the tape head and tape path using a cotton swab and commercially available cleaning solvent after every 10 hours of use. 

Precautions

On batteries

- Do not carry dry batteries with coins or other metallic objects. It can generate heat if the positive and negative terminals of the batteries are accidentally contacted by a metallic object.
- When you are not going to use the Walkman for a long time, remove the battery to avoid any damage caused by battery leakage and subsequent corrosion.

On handling

- Do not leave the unit in a location near heat sources, or in a place subject to direct sunlight, excessive dust or sand, moisture, rain, mechanical shock, or in a car with its windows closed.
- We do not recommend the use of tape longer than 90 minutes. They are very thin and tend to be stretched easily. This may cause malfunction of the unit or sound deterioration.
- If the unit has not been used for a long time, set it in the playback mode to warm it up before inserting a cassette.
- For cleaning the case, use a soft cloth slightly moistened with mild detergent solution. Do not use alcohol, benzine or thinner.

On headphones/earphones

Road safety

Do not use headphones/earphones while driving, cycling, or operating any motorized vehicle. It may create a traffic hazard and is illegal in some areas. It can also be potentially dangerous to play your headphones/earphones at high volume while walking, especially at pedestrian crossings. You should exercise extreme caution or discontinue use in potentially hazardous situations.

Preventing hearing damage

Do not use headphones/earphones at high volume. Hearing experts advise against continuous, loud and extended play. If you experience a ringing in your ears, reduce volume or discontinue use.

Caring for others

Keep the volume at a moderate level. This will allow you to hear outside sounds and to be considerate to the people around you.

Specifications

Frequency range

FM: 87.5 - 108 MHz
AM: 526.5 - 1 606.5 kHz (Italy and Saudi Arabia)
530 - 1 710 kHz (North, Central and South America)
530 - 1 605 kHz (Other countries/regions)

Power requirement

Two R6 (size AA) batteries: 1.5 V DC × 2

Dimensions

86.1 × 117.7 × 32.1 mm (w/h/d) excl. projecting parts and controls

Mass

Approx. 140 g (main unit only)

Supplied accessories

Stereo headphones or Stereo earphones (1)/Belt clip (1)

Design and specifications are subject to change without notice.

Battery life* (approximate hours)

	Sony alkaline LR6 (SG)**	Sony R6P (SR)
playback	25	7.5
radio	55	18

* Measured value by the standard of JEITA (Japan Electronics and Information Technology Industries Association). (Using a Sony HF series cassette tape)

** When using Sony LR6(SG) alkaline dry batteries (produced in Japan)

Note

The battery life may be shorter depending on the operating condition, the surrounding temperature and battery type.

This warranty is valid only in the United States.

SONY®

Tape Cassette Player/Recorder/CD Player/Mini Disc
DAT/Radio/Head Phone/Speaker/MIC/Personals

Portable Audio

LIMITED WARRANTY

Sony Electronics Inc. ("Sony") warrants this Product (including any accessories) against defects in material or workmanship as follows:

1. **LABOR:** For a period of 90 days from the date of purchase, if this Product is determined to be defective, Sony will repair or replace the Product, at its option, at no charge, or pay the labor charges to any Sony authorized service facility. After the Warranty Period, you must pay for all labor charges.

2. **PARTS:** In addition, Sony will supply, at no charge, new or rebuilt replacements in exchange for defective parts for a period of one (1) year. After 90 days from the date of purchase, labor for removal and installation is available from Sony authorized service facilities or a Sony Service Center at your expense.

To obtain warranty service, you must take the Product, or deliver the Product freight prepaid, in either its original packaging or packaging affording an equal degree of protection, to any authorized Sony service facility.

This warranty does not cover customer instruction, installation, set up adjustments or signal reception problems.

This warranty does not cover cosmetic damage or damage due to acts of God, accident, misuse, abuse, negligence, commercial use, or modification of, or to any part of the Product, including the antenna. This warranty does not cover damage due to improper operation or maintenance, connection to improper voltage supply, or attempted repair by anyone other than a facility authorized by Sony to service the Product. This warranty does not cover Products sold AS IS or WITH ALL FAULTS, or consumables (such as fuses or batteries). This warranty is valid only in the United States.

Proof of purchase in the form of a bill of sale or receipted invoice which is evidence that the unit is within the Warranty period must be presented to obtain warranty service.

This warranty is invalid if the factory applied serial number has been altered or removed from the Product.

REPAIR OR REPLACEMENT AS PROVIDED UNDER THIS WARRANTY IS THE EXCLUSIVE REMEDY OF THE CONSUMER. SONY SHALL NOT BE LIABLE FOR ANY INCIDENTAL OR CONSEQUENTIAL DAMAGES FOR BREACH OF ANY EXPRESS OR IMPLIED WARRANTY ON THIS PRODUCT, EXCEPT TO THE EXTENT PROHIBITED BY APPLICABLE LAW. ANY IMPLIED WARRANTY OF MERCHANTABILITY OR FITNESS FOR A PARTICULAR PURPOSE ON THIS PRODUCT IS LIMITED IN DURATION TO THE DURATION OF THIS WARRANTY.

Some states do not allow the exclusion or limitation of incidental or consequential damages, or allow limitations on how long an implied warranty lasts, so the above limitations or exclusions may not apply to you. In addition, if you enter into a service contract with the Sony Partnership within 90 days of the date of sale, the limitation on how long an implied warranty lasts does not apply to you. This warranty gives you specific legal rights, and you may have other rights which vary from state to state.

For your convenience, Sony Electronics Inc. has established telephone numbers for frequently asked questions:

To locate the servicer or dealer nearest you, or for service assistance or resolution of a service problem, or for product information or operation, call:

Sony Customer Information Services Center

1-800-222-7669

or visit the Sony Web Site:

www.sony.com

For an accessory or part not available from your authorized dealer, call:

1-800-488-SONY (7669)

Free Manuals Download Website

<http://myh66.com>

<http://usermanuals.us>

<http://www.somanuals.com>

<http://www.4manuals.cc>

<http://www.manual-lib.com>

<http://www.404manual.com>

<http://www.luxmanual.com>

<http://aubethermostatmanual.com>

Golf course search by state

<http://golfingnear.com>

Email search by domain

<http://emailbydomain.com>

Auto manuals search

<http://auto.somanuals.com>

TV manuals search

<http://tv.somanuals.com>